

# Drinking Water Potential Sources of Contaminants Inventory

## INSTRUCTIONS TO SYSTEM

This template is provided by the NM Environment Department (NMED) Drinking Water Bureau (DWB) as a guide for water systems developing their Potential Sources of Contaminants Inventory. DWB requires that any public water system submit an inventory of existing and planned facilities and land uses that are actual or potential sources of contaminants when undertaking project that: 1) requires an application and 2) involves construction of a new water source or conversion of an existing non-public source to a public water source.

### **Section 1: Determine source type**

The area in which actual and potential sources of contamination are to be inventoried depends on the source type. For projects involving ground water sources that are not under the direct influence of surface water proceed to Section 2.

For projects involving a 40 CFR Part 141 Subpart H source, including an existing non-public surface water source or a non-public ground water under the direct influence of surface water source that is converted to a public 40 CFR Part 141 Subpart H source proceed to Section 3.

### **Section 2: For GROUND WATER SOURCES -**

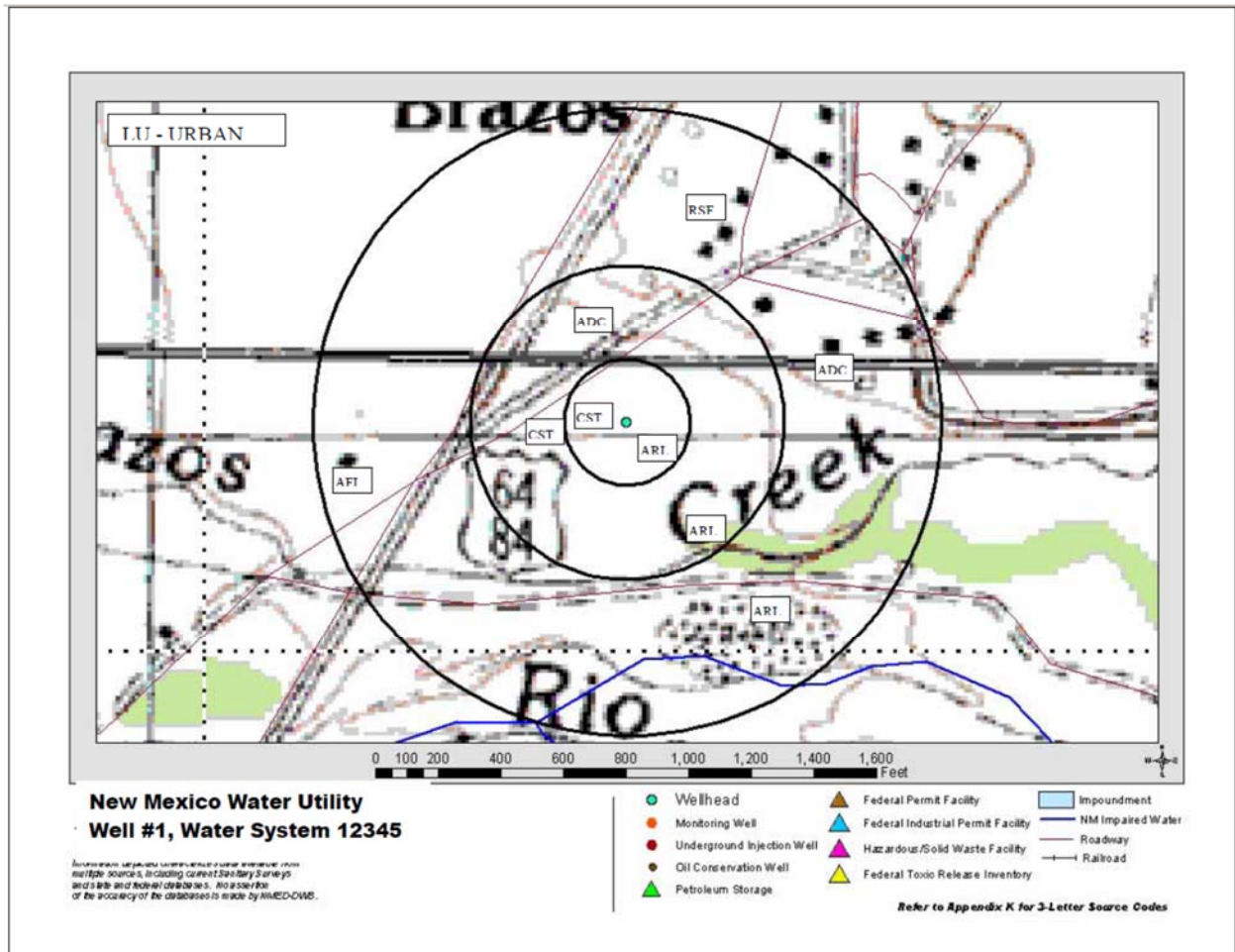
#### **Projects involving a ground water source not under the direct influence of surface water**

For these sources, the potential sources of contaminants inventory is made of existing and planned facilities and land uses that are actual or potential sources of contaminants of concern located within 1,000 feet of the water source.

At a minimum, potential sources of contamination and land uses in Appendix K of the NMED *source water assessment and protection program report of a New Mexico water utility, July 2004 (template for ground water)* (Appendix K) must be considered.



**Example 1: Arbitrary Fixed Radius (1,000-foot) Contaminant Plot for Ground Water.**



### **Section 3: For SURFACE WATER or GROUND WATER UNDER DIRECT INFLUENCE OF SURFACE WATER (GWUDI) SOURCES - Projects involving 40 CFR Part 141 Subpart H**

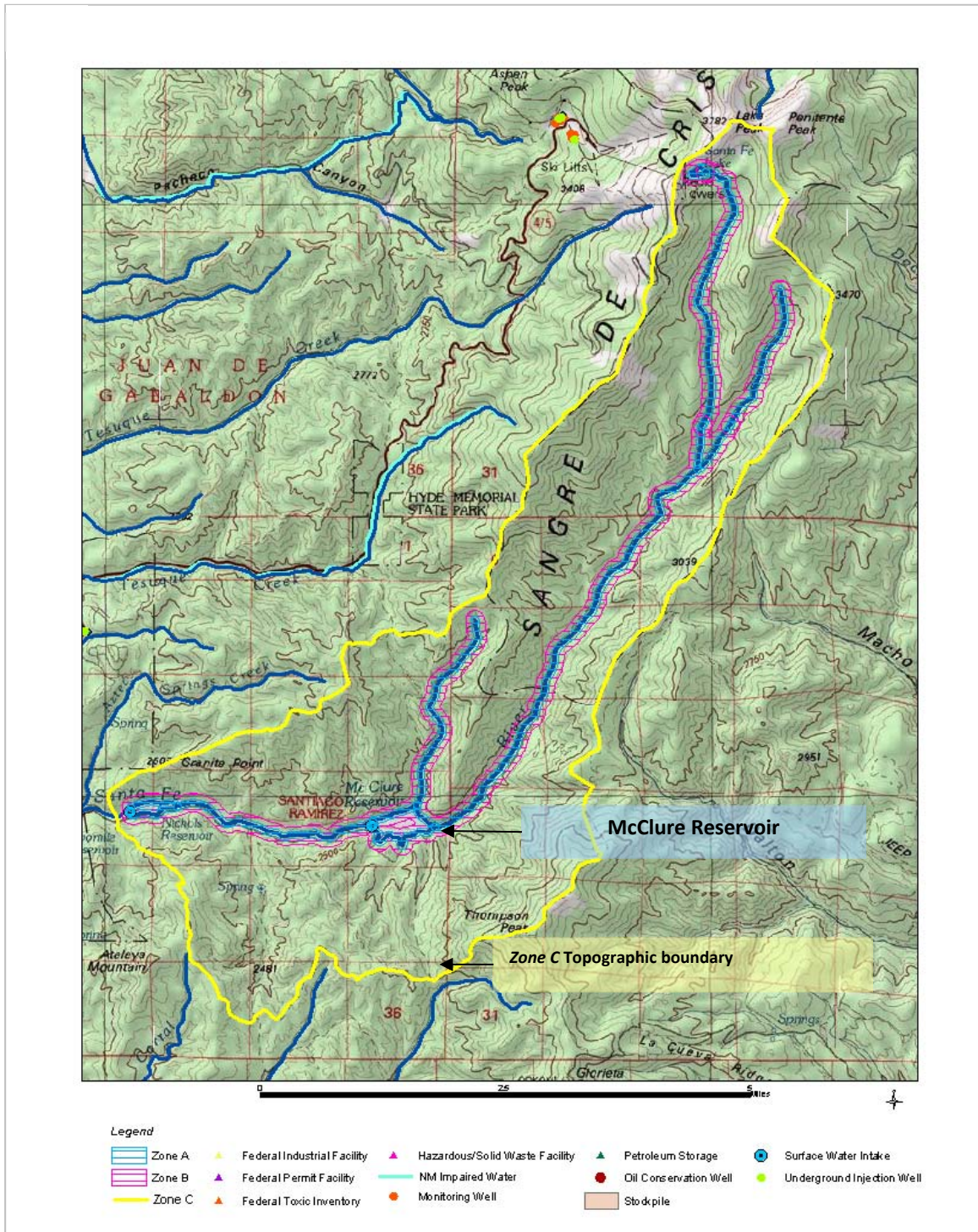
---

For projects involving a 40 CFR Part 141 Subpart H source, including an existing non-public surface water source or a non-public ground water under the direct influence of surface water source that is converted to a public 40 CFR Part 141 Subpart H, sources are delineated according to watershed area, and subdivided into “buffer zones” established at fixed linear distances from the active stream channel. The area of the watershed from which the potential sources of contamination are listed depends on the size of the watershed.

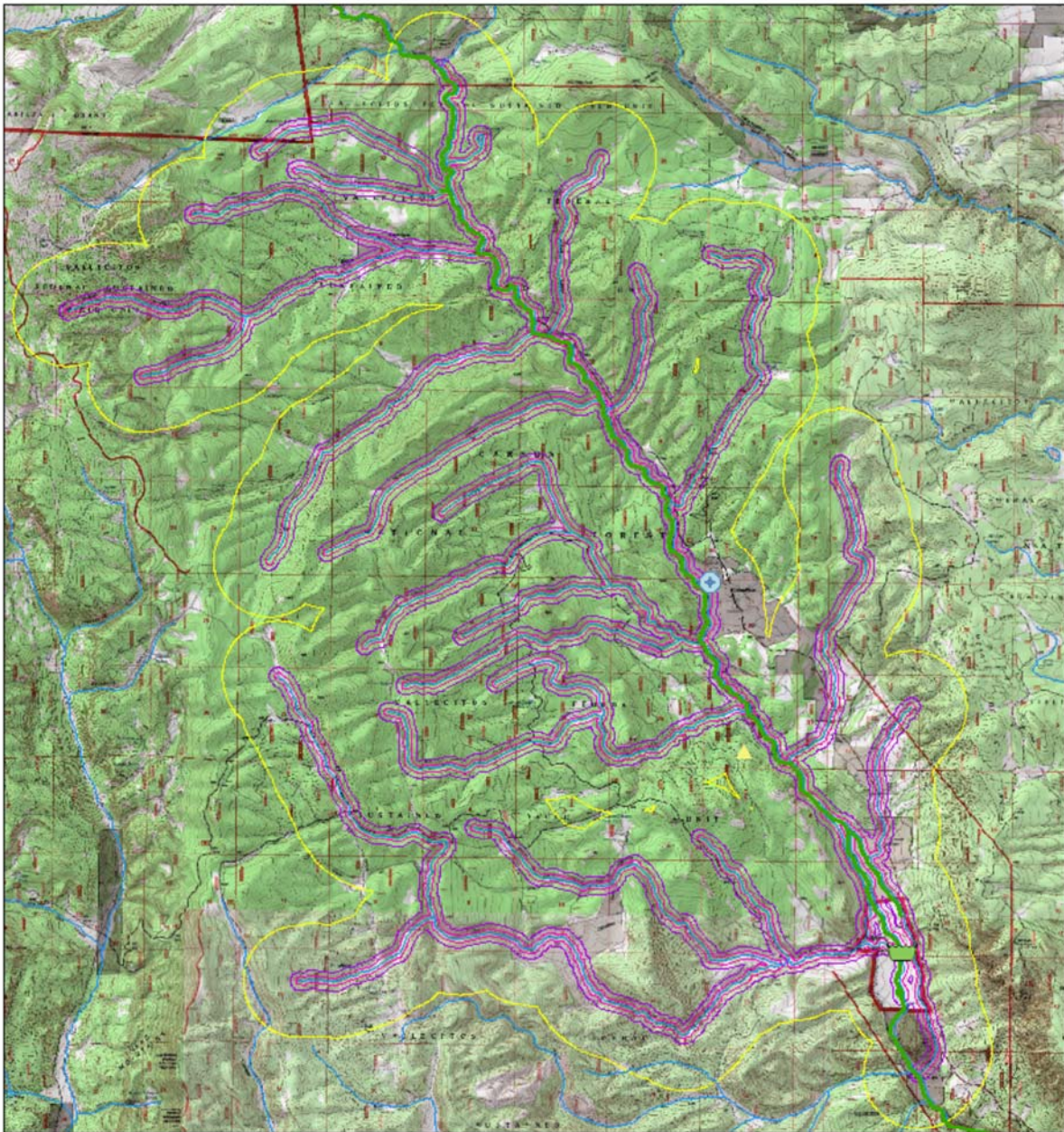
Type A Watersheds are defined as having an area under thirty square miles, and the entire watershed is delineated according to topographic or U.S. Geological Survey 8-Digit Hydrologic Unit Codes called Cataloging Units. Buffer zones within the watershed are defined as follows: Buffer Zone A is a 200 foot-wide strip of land paralleling either bank of an active stream channel and/or extending from the mouth or inlet of an impoundment to the uppermost boundary of the watershed; Buffer Zone B is a 300 foot-wide strip of land beginning at the outside margin of buffer Zone A; and Buffer Zone C is the balance of the land area extending to the topographic boundary of the watershed. (See Example 2)

Type B watersheds are defined as having an area over thirty square miles, and the entire watershed is delineated according to topographic or U.S. Geological Survey 8-Digit Hydrologic Unit Codes called Cataloging Units; however, Potential Sources of Contamination Inventories are applied only to that portion of the watershed defined as a Critical Stream Segment defined as the reach of the watercourse beginning 500 feet below a public water system intake and extending for a distance of ten miles upstream. Zones A, B and C are defined within the Critical Stream Segments as follows: Zone A is a 200 foot-wide strip of land paralleling either bank of an active stream channel; Buffer Zone B is a 300 foot-wide strip of land paralleling an active stream channel and beginning at the outside margin of Buffer Zone A, and Buffer Zone C is a ½ mile-wide corridor of land paralleling either bank of an active stream channel, but excluding buffer zones A and B. (See Example 3)

**Example 2: Type A Watershed delineation.**



**Example 3: Type B Watershed delineation.**



1:89,646

**Vallecitos MDWCA  
Area of Delineation / WSS# 03521**

The information depicted characterizes data available from multiple sources, including current Sanitary Surveys and state and federal databases. No assertion of the accuracy of the databases is made by NMED-DWB.

NMED-Drinking Water Bureau, 2004





## Appendix K

Please note that this is a copy of Appendix K. Always verify that you have the most current version of Appendix K using this link.

<https://www.env.nm.gov/dwb/Documents/AppendixK.pdf>

Map Code	Land Use	Description	Contaminants of Concern*
<i>AGRICULTURAL LAND USE</i>			
AAP	Animal Processing or Rendering Plants	Commercial Operations/Waste Storage/Disposal Facility	Nitrates, Pathogens, Organic/Inorganic Chemicals
ACS	Farm/Ranch Agrochemical Storage Facilities or Sites	Farm/Ranch Storage Site	Pesticides, Herbicides, Fertilizers
ADC	Drainage Canals, Ditches or Acequias-Unlined, Wells (Private, Stock wells, and Irrigation)	Runoff and Infiltration	Pesticides, Herbicides, Fertilizers, Nitrate, Pathogens
ADF	Livestock Production-Dairies	Livestock Wastes, Runoff and Infiltration	Nitrate, Phosphate, Chloride, Pathogens, Pharmaceuticals
AFI	Farming-Irrigated Croplands	Runoff and Infiltration	Nitrate, Ammonia, Chloride, Fertilizers, Pesticides, Herbicides
AFL	Confined Animal Feeding Operations	Runoff and Infiltration of Livestock Wastes	Nitrate, Phosphate, Chloride, Pathogens, Pharmaceuticals
AFM	Farm Machinery Storage or Maintenance Areas	Farm Machinery Maintenance Areas	Automotive Wastes, Welding Wastes, Fuels, Oils, Lubricants
AFN	Farming-Non-irrigated Croplands	Runoff and Infiltration Operations	Nitrate, Ammonia, Chloride, Fertilizers, Pesticides, Herbicides
AHC	Horticultural/Gardens/Nurseries/Greenhouses	Operations/Storage	Pesticides, Herbicides, Fertilizers
AHF	Hay/Feed and Veterinary Product Storage Sites	Farm/Ranch Storage Site	Fungicides, Pesticides, Nitrates, Pharmaceuticals
AMA	Manure or Livestock Waste-Land Application Areas	Land Application of Manure	Nitrate, Ammonia, Phosphate, Chloride, Pathogens, Pharmaceuticals
AMS	Manure or Livestock Waste-Storage Facilities or Sites	Lined and Unlined Manure Storage Facilities	Nitrate, Ammonia, Phosphate, Chloride, Pathogens, Pharmaceuticals
AOA	Livestock Production-Other Animal	Livestock Wastes	Nitrate, Ammonia, Phosphate, Chloride, Pathogens, Pharmaceuticals
APF	Livestock Production -Poultry	Poultry Sewage Wastes	Nitrate, Ammonia, Phosphate, Chloride, Pathogens, Pharmaceuticals
APP	Processing Plants or Mills- Hay, Grain, or Produce	Operations, Waste Storage and Disposal	Organic/Inorganic Chemicals, Lubricants, Machinery Wastes
ARL	Animal Rangeland	Rangeland and Pasturage	Nitrate, Ammonia, Phosphate, Chloride, Pesticides, Pathogens
ASC	Bulk Agrochemical Storage-Petroleum/Chemicals	Storage-500 gallons or more	Petroleum Products, Inorganic/Organic Chemicals



## Name: Potential Sources of Contaminants Inventory Template

Effective Date: 4/28/17

Version: 2

<b>Map Code</b>	<b>Land Use</b>	<b>Description</b>	<b>Contaminants of Concern*</b>
ASF	Bulk Agrochemical Storage-Fertilizers	Feed Mill, Agricultural Co-op	Fertilizers
ASG	Bulk Agricultural Product Storage-Grain or Produce	Grain Elevator, Warehouse or Storage Site	Fungicides, Oils, Lubricants, Machinery Wastes
ASH	Livestock Production -Sheep	Livestock Sewage Wastes	Nitrate, Ammonia, Phosphate, Chloride, Pathogens, Pharmaceuticals
ASP	Bulk Agrochemical Storage-Pesticides	Feed Mill, Agricultural Co-op	Pesticides
ASW	Livestock Production -Swine	Livestock Sewage Wastes	Nitrate, Ammonia, Phosphate, Chloride, Pathogens, Pharmaceuticals
<b>COMMERCIAL LAND USE</b>			
CAI	Airports (Active/Inactive)	Operations/Maintenance/Construction	Aircraft Fuels, Deicers, Batteries, Diesel Fuel, Chlorinated Solvents, Automobile Wastes, Heating Oil, Building Wastes, Sewage, Septage, Pathogens, Pesticides, Fertilizers
CAR	Automotive Repair Shops	Operations/Maintenance/Storage	Solvents, Metals, Automotive Waste, Oils, Gasoline
CAW	Abandoned/Improperly Closed Wells	Storage/Disposal	Organic/Inorganic Chemicals, Brines, Waste Oil, Treated Sewage Effluent, Storm Water Runoff, Process Waste Water, Metals, Pathogens, Nitrate
CBS	Automotive Body Shops	Operations/Maintenance	Paints, Solvents
CBY	Boat Yards/Marinas	Operations/Maintenance	Gasoline, Diesel Fuels, Septage, Wood Treatment Chemicals, Paints, Varnishes, Automotive Wastes, Solvents, Building Wastes
CCG	Camp Grounds - Unsewered	Untreated Domestic Wastewater	Septage, Gasoline, Pesticides, Organic/Inorganic Chemicals
CCE	Cemeteries	Operations/Maintenance	Leachate, Arsenic, Pesticides, Fertilizers
CCW	Car Washes	Unsewered, Without Total Recycling System	Soaps, Detergents, Waxes, Organic/Inorganic Chemicals
CCY	Construction/Demolition Yard/Staging Areas	Storage/Maintenance	Gasoline, Diesel Fuels, Wood Treatment Chemicals, Paints, Varnishes, Automotive Wastes, Solvents, Building Wastes, Explosives, Oil
CDC	Dry Cleaning Shops	Operations/Maintenance	Chlorinated Solvents, Organic/Inorganic Chemicals
CFA	Fuel Storage Tanks-Above Ground	Non-Service Station Tanks	Gasoline, Diesel Fuel, Organic/Inorganic Chemicals
CFB	Fuel Storage Tanks-Below Ground	Non-Service Station Tanks	Gasoline, Diesel Fuel, Organic/Inorganic Chemicals
CFC	Funeral Homes/Crematories	Operations	Biohazard Waste, Organic/Inorganic Chemicals, Septage
CFR	Furniture Repair/Refinishing	Operations	Paints, Solvents, Organic Chemicals

## Name: Potential Sources of Contaminants Inventory Template

Effective Date: 4/28/17

Version: 2

Map Code	Land Use	Description	Contaminants of Concern*
CGC	Golf Courses	Operations/Maintenance	Fertilizers, Pesticides, Gasoline, Automotive Wastes, Batteries, Septage
CHG	Historic Gasoline Service Stations	Above/Below Ground Storage Tanks/Operations	Gasoline, Oils, Solvents, Automotive Wastes, Septage
CHM	Home Manufacturing	Operations/Maintenance/Storage	Paints, Solvents, Organic/Inorganic Chemicals
CHN	Hospitals/Nursing Homes - Unsewered	Wastewater Discharge to Septic Tank/Leach Field	Biohazard Waste, Organic/Inorganic Chemicals, Septage, Radiological Waste
CHW	Hardware/Lumber/Parts Stores	Operations/Storage	Pesticides, Fertilizers, Organic/Inorganic Chemicals
CLD	Laundromats - Unsewered	Wastewater Discharge	Detergents, Soaps, Septage
CPP	Photo Processing Laboratories	Operations/Storage	Organic/Inorganic Chemicals
CPR	Printing Shops	Operations/Storage	Solvents, Inks, Dyes, Organic/Inorganic Chemicals
CPS	Paint Stores	Storage	Paint, Solvents
CRL	Research Laboratories	Operations/Maintenance/Storage	Biohazard Waste, Radiological Materials and Waste, Metals, Organic/Inorganic Chemicals
CRY	Railroad Yards and Tracks	Operations/Maintenance/Storage	Diesel Fuel, Pesticides, Organic/Inorganic Chemicals
CSS	Gasoline Service Stations	Above/Below Ground Storage Tanks/Operations	Gasoline, Oils, Solvents, Automotive Wastes, Septage
CST	Commercial Septic Tanks/Leachfields/Leachpits/Cesspools	Storage/Disposal	Septage, Septic Effluent, Pathogens, Nitrate, Ammonia, Chloride
CVS	Veterinary Facilities	Operations/Maintenance	Biohazard Waste, Organic/Inorganic Chemicals, Septage, Radiological Waste
<b>INDUSTRIAL LAND USE</b>			
IAS	Asphalt Plants	Production/Storage	Petroleum Derivatives
ICC	Cement/Concrete Plants	Operations/Maintenance/Storage	Organic/Inorganic Chemicals, Oils, Natural Gas, Propane,
ICE	Communications Equipment Manufacturers	Production/Maintenance/Storage	Solvents, Organic/Inorganic Chemicals, Oils, Waste Oils, Metals
ICL	Chemical Landfills	Storage/Disposal	Leachate of Organic/Inorganic Chemicals, Acids, Bases, Metals, Solvents, Gasoline, Diesel Fuel, Pesticides, PCB's
ICP	Chemical Production Plants	Production/Maintenance/Storage	Organic/Inorganic Chemicals, Solvents, Oils, Metals
IEE	Electronic/Electrical Equipment Manufacturers	Production/Maintenance/Storage	Solvents, Organic/Inorganic Chemicals, Oils, Waste Oils, Metals, Acids, Bases
IFM	Furniture and Fixture Manufacturers	Production/Maintenance/Storage	Paints, Solvents, Organic/Inorganic Chemicals
IFW	Foundry/Smelting Plants	Production/Maintenance/Storage	Organic/Inorganic Chemicals, Metals, Solvents, Acids, Bases, Oils

## Name: Potential Sources of Contaminants Inventory Template

Effective Date: 4/28/17

Version: 2

<b>Map Code</b>	<b>Land Use</b>	<b>Description</b>	<b>Contaminants of Concern*</b>
IGO	Gas/Oil Wells-Active/Abandoned/Test, Wells Geothermal and Industrial	Production	Oil, Natural Gas, Organic/Inorganic Chemicals, Acids, Bases, Drilling Wastes
IHD	Historic Dumps/Landfills	Storage/Disposal	Leachate of Organic/Inorganic Chemicals, Acids, Bases, Metals, Solvents, Gasoline, Diesel Fuel, Pesticides, PCB's, Automotive Wastes
IHM	Historic Mining Operations	Production Waste/Storage	Metals, Inorganic Chemicals, Acids, Bases, Radiological Materials
IMI	Primary Metal Industries	Steel/Metal Works, Rolling/Wire Mills	Metals, Inorganic Chemicals, Acids, Bases
IMO	Mining Operations (Surface And Subsurface)	Production Waste/Storage	Metals, Inorganic Chemicals, Acids, Bases, Radiological Materials
IMP	Metal Plating/Processing Facilities	Operations/Maintenance/Storage	Organic/Inorganic Chemicals, Acids, Bases, Metals
IMW	Machine/Metal Working Shops	Operations/Maintenance/Storage	Cutting Oils, Metals, Solvents, Organic/Inorganic Chemicals, Detergents
IOG	Oil/Gas Pipelines	Transport	Oils, Gasoline, Volatile Organic Chemicals, Natural Gas, Propane
IPL	Plastics Manufacturing/Molder	Operations/Maintenance/Storage	Solvents, Oils, Organic/Inorganic Chemicals, Acids, Bases
IPM	Paper Mills	Operations/Maintenance/Storage	Acids, Metals, Organic/Inorganic Chemicals
IPP	Petroleum Production/Refining/ Bulk Plants	Operations/Maintenance/Storage	Oils, Gasoline, Diesel Fuels, Organic Chemicals, Oil Drilling/Refining Wastes
IPU	Public Utilities	Power Generating Stations	PCB's, Solvents, Diesel Fuel, Propane, Natural Gas, Oil, Acids, Bases, Organic/Inorganic Chemicals, Metals
IRG	RCRA Waste Generators - Other	Storage/Disposal	Organic/Inorganic Chemicals, Solvents, Metals, PCB's, Acids, Bases, Radiological Materials
IRW	Radioactive Waste Disposal Sites	Storage/Disposal	High and Low Level Radiological Wastes
ISD	Sumps/Dry Wells	Storage/Disposal	Storm Water Runoff, Organic/Inorganic Chemicals, Solvents, Process Wastewater, Pesticides, Oils
ISF	Superfund Sites	Storage/Disposal	Organic/Inorganic Chemicals, Solvents, Metals, PCB's, Acids, Bases, Radiological Materials
ISM	Primary Wood Industries	Saw Mills, Planers, Wood Treatment	Organic/Inorganic Chemicals, Metals, Solvents
IST	Stone, Tile, Glass Manufacturing	Operations/Maintenance/Storage	Solvents, Oils, Metals, Organic/Inorganic Chemicals
ITS	Treatment/Storage/Disposal Ponds/Lagoons	Treatment/Storage	Organic/Inorganic Chemicals, Metals, Acids, Bases, Sewage
ITT	Transport/Distribution, Warehouses, Truck Terminals	Operations/Maintenance/Storage	Gasoline, Diesel Fuels, Automotive Wastes, Metals, Organic/Inorganic Chemicals, Acids, Bases

## Name: Potential Sources of Contaminants Inventory Template

Effective Date: 4/28/17

Version: 2

<b>Map Code</b>	<b>Land Use</b>	<b>Description</b>	<b>Contaminants of Concern*</b>
IUD	Unregulated Dumps/Excavated Sites, Snow Dumps	Storage/Collection/Disposal	Organic/Inorganic Chemicals, Automotive Wastes, Oil, Gasoline, Runoff from Adjacent Sites
IUI	Underground Injection (UIC) Wells	Storage/Disposal	Organic/Inorganic Chemicals, Brines, Waste Oil, Treated Sewage Effluent, Storm Water Runoff, Process Wastewater, Metals, Pathogens, Nitrate
IUR	Utility/Transportation Right of Ways, major transportation corridor	Power Lines, Gas/Oil Pipelines	Pesticides, Gasoline, Diesel Fuels, Automotive Wastes, Organic/Inorganic Chemicals, PCB's, Sewage, Metals, Storm water Runoff, Pathogens
<b>MUNICIPAL/RESIDENTIAL LAND USE</b>			
MHM	Highway/Road Maintenance Yards	Operations/Maintenance/Storage	Gasoline, Diesel Fuels, Solvents, Road Salt, Asphalt, Pesticides, Automotive Wastes,
MHR	Highway Rest Areas	Operations/Maintenance/Storage/Disposal	Automotive Wastes, Septage, Gasoline, Diesel Fuels, Pesticides
MIN	Incinerators - Commercial or Municipal	Operations/Disposal	Metals, Organic/Inorganic Chemicals
MLF	Municipal Waste Landfills	Storage/Disposal	Leachate, Organic/Inorganic Chemicals, Pesticides, Metals, Oils
MMF	Military Facilities	Operations/Maintenance/Storage/Disposal	Gasoline, Aircraft Fuels, Diesel Fuels, Automotive Wastes, Metals, Organic/Inorganic Chemicals, Explosives, Radiological Materials, Pesticides, Sewage/Septage, Oils, Solvents, Fertilizers, Batteries, Deicers
MMP	Motor Pools	Operations/Maintenance/Storage/Disposal	Gasoline, Diesel Fuel, Oils, Waste Oils, Automotive Waste, Batteries, Metals
MPS	Sewage Pump Stations	Operations/Storage	Sewage, Pathogens, Nitrate, Metals, Organic/Inorganic Chemicals
MPW	Polluted Surface Water Sources	Naturally Occurring/Anthropogenic	Sewage, Pathogens, Nitrate, Metals, Acids, Bases, Organic/Inorganic Chemicals
MRF	Recycling Facilities	Operations/Storage/Disposal	Metals, Organic/Inorganic Chemicals, Pesticides, Automotive Wastes, Oils
MSC	Schools – Unsewered	Wastewater Discharge to Septic Tank/Leach Field	Septage, Septic Effluent, Pathogens, Nitrate, Ammonia, Chloride
MSD	Storm Drainage Collection Areas or Outlets-Unlined	Storage/Disposal	Runoff, Pesticides, Fertilizer, Pathogens, Nitrate, Phosphate, Oil
MSL	Sewer Lines	Transport	Sewage, Pathogens, Nitrate, Metals, Organic/Inorganic Chemicals
MSP	Wastewater Seepage/Retention Ponds (Unlined/Lined)	Storage/Disposal	Sewage Effluent, Nitrate, Ammonia, Pathogens, Organic/Inorganic Chemicals, Pesticides
MSS	Sewage Effluent/Sludge Land Application Areas	Storage/Disposal	Sewage/Sewage Sludge, Nitrate, Pathogens, Organic/Inorganic Chemicals, Metals

Name: Potential Sources of Contaminants Inventory Template

Effective Date: 4/28/17

Version: 2

<b>Map Code</b>	<b>Land Use</b>	<b>Description</b>	<b>Contaminants of Concern*</b>
MST	Sewage Treatment Plants	Operations/Maintenance/Storage/Disposal	Sewage, Sewage Sludge, Metals, Pathogens, Organic/Inorganic Chemicals
MSW	Solid Waste Transfer Stations	Storage/Disposal	Metals, Organic/Inorganic Chemicals, Pesticides, Automotive Wastes, Oils
MWP	Water Treatment Plants and Water Supply Wells	Operations/Maintenance/Storage/Disposal	Organic/Inorganic Chemicals, Chlorine
RSF	Single Family Residences - Unsewered	Wastewater Discharge to Septic Tank/Leach Field or Cesspool	Septage, Pathogens, Nitrate, Ammonia, Chloride, Heavy Metals, Household Pesticides, Herbicides, Cleaning Agents and Solvents, Fuels
* Contaminants of Concern include substances that are commonly, but not always, associated with the Contaminant Source listed in column 2			