



# EJScreen Community Report

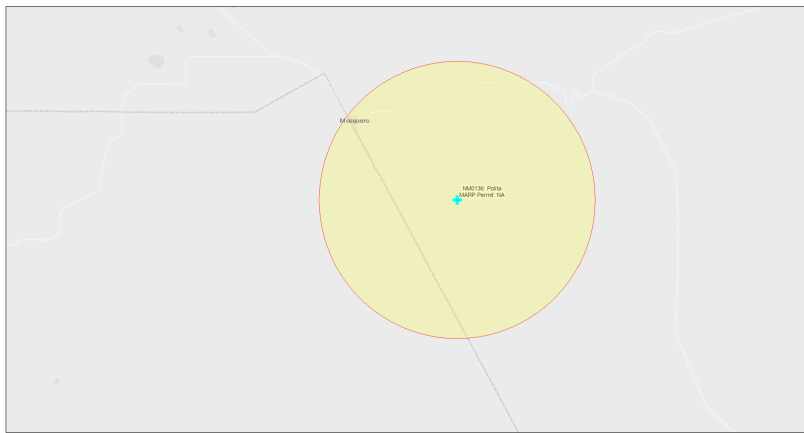
This report provides environmental and socioeconomic information for user-defined areas, and combines that data into environmental justice and supplemental indexes.

## Polita NM0136

5 miles Ring Centered at 35.735196,-103.891148

Population: 106

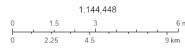
Area in square miles: 78.53



September 23, 2024

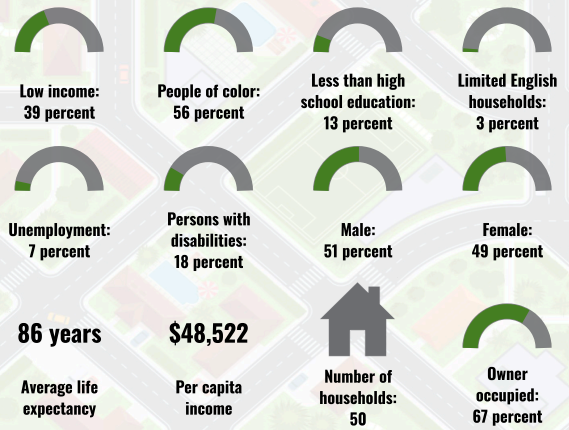
Polita NM0136

\* Abandoned Uranium Mines

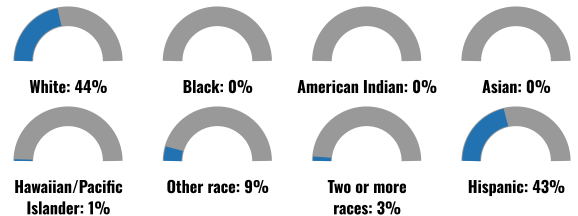


Map, Mexico Energy, Minerals and Natural Resources Department Bureau of Land Management, Texas Parks & Wildlife, Esri, HERE, DeLorme, USGS, EPA, NPS, Esri, HERE, Swisstopo

### COMMUNITY INFORMATION



### BREAKDOWN BY RACE



### BREAKDOWN BY AGE



### LIMITED ENGLISH SPEAKING BREAKDOWN



Notes: Numbers may not sum to totals due to rounding. Hispanic population can be of any race. Source: U.S. Census Bureau, American Community Survey (ACS) 2018-2022. Life expectancy data comes from the Centers for Disease Control.

### LANGUAGES SPOKEN AT HOME

LANGUAGE	PERCENT
No language data available.	

Report for 5 miles Ring Centered at 35.735196,-103.891148

Report produced September 23, 2024 using EJScreen Version 2.3

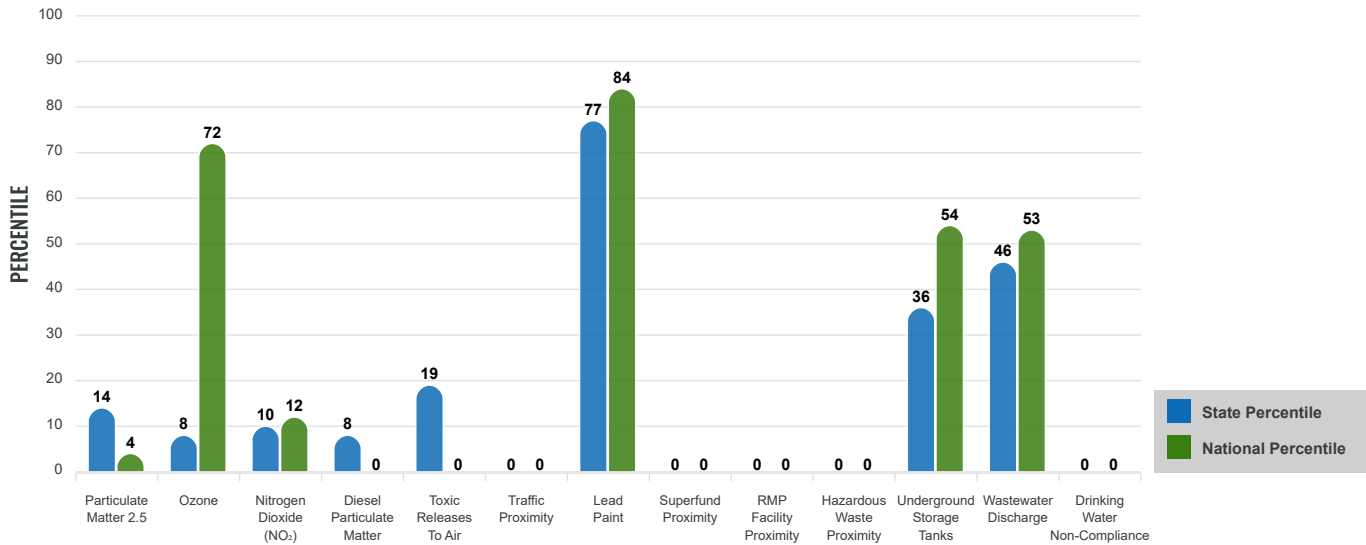
# Environmental Justice & Supplemental Indexes

The environmental justice and supplemental indexes are a combination of environmental and socioeconomic information. There are thirteen EJ indexes and supplemental indexes in EJScreen reflecting the 13 environmental indicators. The indexes for a selected area are compared to those for all other locations in the state or nation. For more information and calculation details on the EJ and supplemental indexes, please visit the [EJScreen website](#).

## EJ INDEXES

The EJ indexes help users screen for potential EJ concerns. To do this, the EJ index combines data on low income and people of color populations with a single environmental indicator.

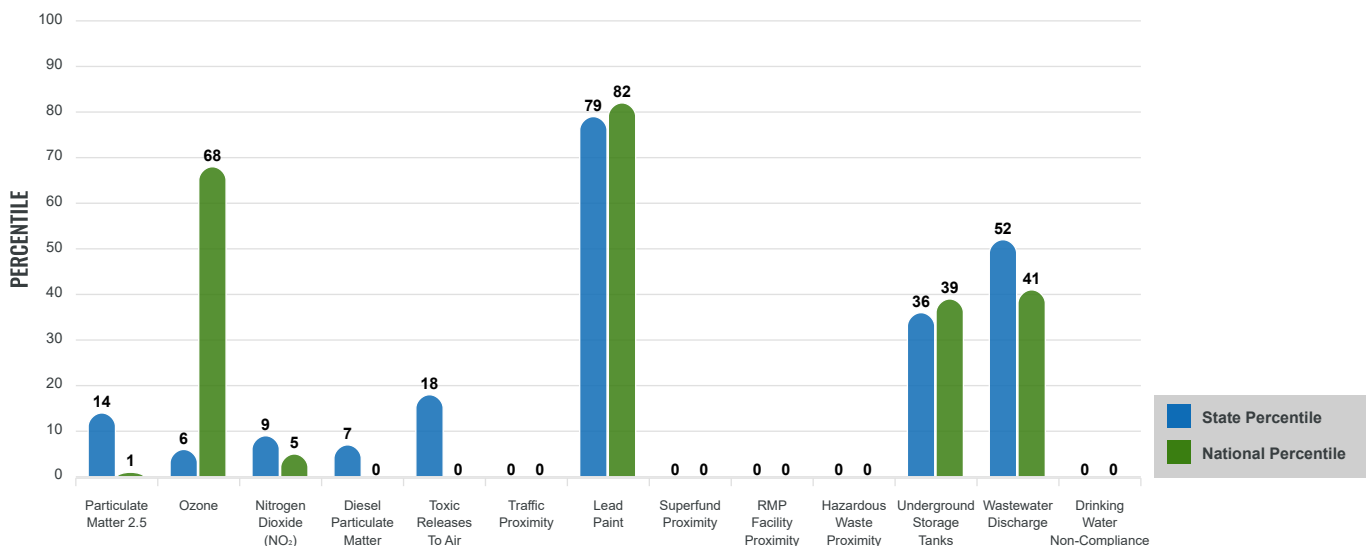
### EJ INDEXES FOR THE SELECTED LOCATION



## SUPPLEMENTAL INDEXES

The supplemental indexes offer a different perspective on community-level vulnerability. They combine data on percent low income, percent persons with disabilities, percent less than high school education, percent limited English speaking, and percent low life expectancy with a single environmental indicator.

### SUPPLEMENTAL INDEXES FOR THE SELECTED LOCATION



Report for 5 miles Ring Centered at 35.735196,-103.891148

Report produced September 23, 2024 using EJScreen Version 2.3

# EJScreen Environmental and Socioeconomic Indicators Data

SELECTED VARIABLES	VALUE	STATE AVERAGE	PERCENTILE IN STATE	USA AVERAGE	PERCENTILE IN USA
<b>ENVIRONMENTAL BURDEN INDICATORS</b>					
Particulate Matter 2.5 (µg/m <sup>3</sup> )	4.88	6.11	12	8.45	1
Ozone (ppb)	60.3	65.3	6	61.8	50
Nitrogen Dioxide (NO <sub>2</sub> ) (ppbv)	2.7	8.1	8	7.8	4
Diesel Particulate Matter (µg/m <sup>3</sup> )	0.0149	0.187	6	0.191	0
Toxic Releases to Air (toxicity-weighted concentration)	0	29	14	4,600	0
Traffic Proximity (daily traffic count/distance to road)	0	730,000	0	1,700,000	0
Lead Paint (% Pre-1960 Housing)	0.52	0.19	89	0.3	75
Superfund Proximity (site count/km distance)	0	0.34	0	0.39	0
RMP Facility Proximity (facility count/km distance)	0	0.2	0	0.57	0
Hazardous Waste Proximity (facility count/km distance)	0	1.2	0	3.5	0
Underground Storage Tanks (count/km <sup>2</sup> )	0.0019	2.8	28	3.6	27
Wastewater Discharge (toxicity-weighted concentration/m distance)	3.7	990000	43	700000	29
Drinking Water Non-Compliance (points)	0	5.6	0	2.2	0
<b>SOCIOECONOMIC INDICATORS</b>					
Demographic Index USA	1.8	N/A	N/A	1.34	72
Supplemental Demographic Index USA	1.92	N/A	N/A	1.64	70
Demographic Index State	2.03	2.16	45	N/A	N/A
Supplemental Demographic Index State	1.58	1.62	51	N/A	N/A
People of Color	56%	62%	39	40%	69
Low Income	39%	39%	50	30%	69
Unemployment Rate	7%	6%	66	6%	72
Limited English Speaking Households	3%	6%	56	5%	68
Less Than High School Education	13%	14%	59	11%	68
Under Age 5	5%	5%	59	5%	54
Over Age 64	24%	20%	71	18%	77

\*Diesel particulate matter index is from the EPA's Air Toxics Data Update, which is the Agency's ongoing, comprehensive evaluation of air toxics in the United States. This effort aims to prioritize air toxics, emission sources, and locations of interest for further study. It is important to remember that the air toxics data presented here provide broad estimates of health risks over geographic areas of the country, not definitive risks to specific individuals or locations. More information on the Air Toxics Data Update can be found at: <https://www.epa.gov/haps/air-toxics-data-update>.

**Sites reporting to EPA within defined area:**

Superfund .....	0
Hazardous Waste, Treatment, Storage, and Disposal Facilities .....	0
Water Dischargers .....	4
Air Pollution .....	1
Brownfields .....	0
Toxic Release Inventory .....	0

**Other community features within defined area:**

Schools .....	2
Hospitals .....	0
Places of Worship .....	1

**Other environmental data:**

Air Non-attainment .....	No
Impaired Waters .....	No

Selected location contains American Indian Reservation Lands* .....	No
Selected location contains a "Justice40 (CEJST)" disadvantaged community .....	Yes
Selected location contains an EPA IRA disadvantaged community .....	Yes

Report for 5 miles Ring Centered at 35.735196,-103.891148  
 Report produced September 23, 2024 using EJScreen Version 2.3

## EJScreen Environmental and Socioeconomic Indicators Data

### HEALTH INDICATORS

INDICATOR	VALUE	STATE AVERAGE	STATE PERCENTILE	US AVERAGE	US PERCENTILE
Low Life Expectancy	0%	19%	0	20%	0
Heart Disease	10	5.9	98	5.8	98
Asthma	10.1	11.2	14	10.3	46
Cancer	9.4	6.1	97	6.4	96
Persons with Disabilities	18.4%	17.1%	63	13.7%	79

### CLIMATE INDICATORS

INDICATOR	VALUE	STATE AVERAGE	STATE PERCENTILE	US AVERAGE	US PERCENTILE
Flood Risk	10%	9%	69	12%	66
Wildfire Risk	98%	58%	71	14%	94

### CRITICAL SERVICE GAPS

INDICATOR	VALUE	STATE AVERAGE	STATE PERCENTILE	US AVERAGE	US PERCENTILE
Broadband Internet	37%	20%	85	13%	95
Lack of Health Insurance	6%	10%	31	9%	42
Housing Burden	No	N/A	N/A	N/A	N/A
Transportation Access Burden	Yes	N/A	N/A	N/A	N/A
Food Desert	Yes	N/A	N/A	N/A	N/A

Report for 5 miles Ring Centered at 35.735196,-103.891148

Report produced September 23, 2024 using EJScreen Version 2.3

Location: User-specified point center at 35.735196, -103.891148  
 Ring (buffer): 5-miles radius  
 Description: Polita NM0136

Summary of ACS Estimates		2018 - 2022
Population		106
Population Density (per sq. mile)		2
People of Color Population		60
% People of Color Population		56%
Households		50
Housing Units		94
Housing Units Built Before 1950		40
Per Capita Income		48,522
Land Area (sq. miles) (Source: SF1)		54.16
% Land Area		100%
Water Area (sq. miles) (Source: SF1)		0.16
% Water Area		0%

	2018 - 2022 ACS Estimates	Percent	MOE (±)
<b>Population by Race</b>			
Total	106	100%	177
Population Reporting One Race	91	86%	344
White	54	51%	119
Black	0	0%	13
American Indian	0	0%	84
Asian	0	0%	13
Pacific Islander	1	1%	14
Some Other Race	36	34%	101
Population Reporting Two or More Races	15	14%	53
Total Hispanic Population	46	43%	128
Total Non-Hispanic Population	61		
White Alone	47	44%	119
Black Alone	0	0%	13
American Indian Alone	0	0%	84
Non-Hispanic Asian Alone	0	0%	13
Pacific Islander Alone	1	1%	14
Other Race Alone	10	9%	58
Two or More Races Alone	3	3%	19
<b>Population by Sex</b>			
Male	54	51%	119
Female	53	49%	103
<b>Population by Age</b>			
Age 0-4	5	5%	34
Age 0-17	22	21%	55
Age 18+	84	79%	167
Age 65+	26	24%	103

**Data Note:** Detail may not sum to totals due to rounding. Hispanic population can be of any race.

N/A means not available. **Source:** U.S. Census Bureau, American Community Survey (ACS) 2018 - 2022

Location: User-specified point center at 35.735196, -103.891148  
 Ring (buffer): 5-miles radius  
 Description: Polita NM0136

	2018 - 2022 ACS Estimates	Percent	MOE (±)
<b>Population 25+ by Educational Attainment</b>			
Total	75	100%	177
Less than 9th Grade	3	4%	37
9th - 12th Grade, No Diploma	7	10%	60
High School Graduate	23	30%	117
Some College, No Degree	11	15%	86
Associate Degree	8	11%	33
Bachelor's Degree or more	23	31%	50
<b>Population Age 5+ Years by Ability to Speak English</b>			
Total	101	100%	177
Speak only English	73	73%	153
Non-English at Home <sup>1+2+3+4</sup>	28	27%	85
<sup>1</sup> Speak English "very well"	23	22%	81
<sup>2</sup> Speak English "well"	3	3%	53
<sup>3</sup> Speak English "not well"	2	2%	45
<sup>4</sup> Speak English "not at all"	0	0%	45
<sup>3+4</sup> Speak English "less than well"	2	2%	64
<sup>2+3+4</sup> Speak English "less than very well"	5	5%	83
<b>Limited English Speaking Households*</b>			
Total	1	100%	28
Speak Spanish	1	100%	16
Speak Other Indo-European Languages	0	0%	13
Speak Asian-Pacific Island Languages	0	0%	13
Speak Other Languages	0	0%	13
<b>Households by Household Income</b>			
Household Income Base	50	100%	95
< \$15,000	2	4%	40
\$15,000 - \$25,000	10	20%	65
\$25,000 - \$50,000	17	34%	32
\$50,000 - \$75,000	5	10%	18
\$75,000 +	16	32%	72
<b>Occupied Housing Units by Tenure</b>			
Total	50	100%	95
Owner Occupied	34	67%	95
Renter Occupied	17	33%	31
<b>Employed Population Age 16+ Years</b>			
Total	87	100%	177
In Labor Force	48	56%	115
Civilian Unemployed in Labor Force	3	7%	23
Not In Labor Force	39	44%	114

**Data Note:** Detail may not sum to totals due to rounding. Hispanic population can be of anyrace.

N/A means not available. **Source:** U.S. Census Bureau, American Community Survey (ACS)

\*Households in which no one 14 and over speaks English "very well" or speaks English only.

Location: User-specified point center at 35.735196, -103.891148

Ring (buffer): 5-miles radius

Description: Polita NM0136

	2018 - 2022 ACS Estimates	Percent	MOE (±)
<b>Population by Language Spoken at Home*</b>			
Total (persons age 5 and above)	N/A	N/A	N/A
English	N/A	N/A	N/A
Spanish	N/A	N/A	N/A
French, Haitian, or Cajun	N/A	N/A	N/A
German or other West Germanic	N/A	N/A	N/A
Russian, Polish, or Other Slavic	N/A	N/A	N/A
Other Indo-European	N/A	N/A	N/A
Korean	N/A	N/A	N/A
Chinese (including Mandarin, Cantonese)	N/A	N/A	N/A
Vietnamese	N/A	N/A	N/A
Tagalog (including Filipino)	N/A	N/A	N/A
Other Asian and Pacific Island	N/A	N/A	N/A
Arabic	N/A	N/A	N/A
Other and Unspecified	N/A	N/A	N/A
Total Non-English	N/A	N/A	N/A

**Data Note:** Detail may not sum to totals due to rounding. Hispanic population can be of any race.  
 N/A means not available. **Source:** U.S. Census Bureau, American Community Survey (ACS) 2018 - 2022.  
 \*Population by Language Spoken at Home is available at the census tract summary level and up.