

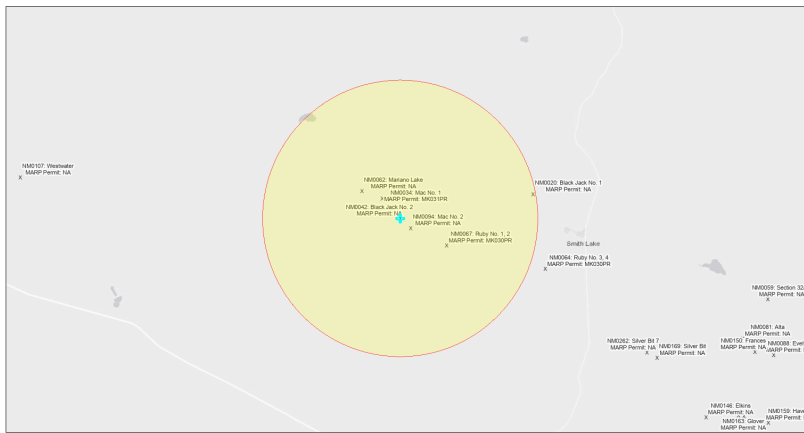


# EJScreen Community Report

This report provides environmental and socioeconomic information for user-defined areas, and combines that data into environmental justice and supplemental indexes.

## Black Jack No. 2 NM0042

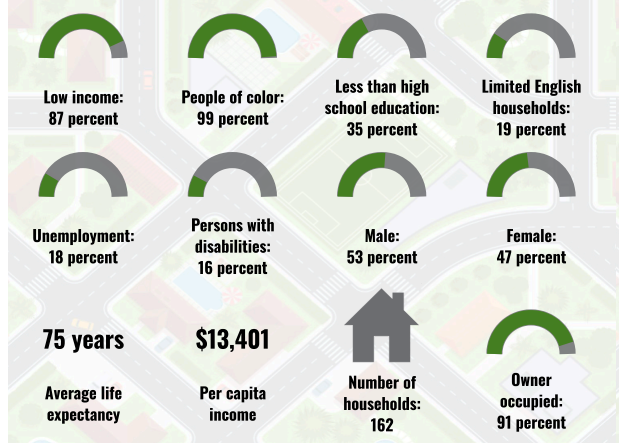
5 miles Ring Centered at 35.532785,-108.253269  
Population: 468  
Area in square miles: 78.53



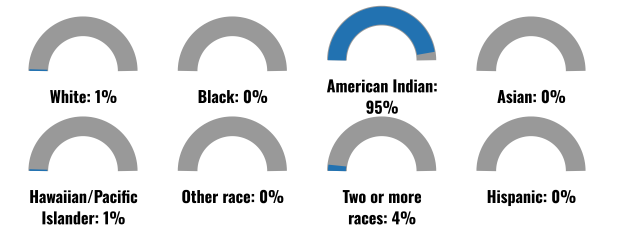
September 17, 2024  
Black Jack No. 2 NM0042  
Abandoned Uranium Mines

1:144,448  
0 1.5 3 4.5 6 mi  
0 2.25 4.5 9 km  
Bureau of Land Management, Esri, HERE, Garmin, IGCN, IGN, IPNS, Mapbox, Microsoft, Swirex, and Natural Resources Department, Esri, HERE, IPNS

### COMMUNITY INFORMATION



### BREAKDOWN BY RACE



### BREAKDOWN BY AGE



### LIMITED ENGLISH SPEAKING BREAKDOWN



Notes: Numbers may not sum to totals due to rounding. Hispanic population can be of any race. Source: U.S. Census Bureau American Community Survey (ACS) 2018-2022. Life expectancy data comes from the Centers for Disease Control.

### LANGUAGES SPOKEN AT HOME

LANGUAGE	PERCENT
English	40%
Other and Unspecified	60%
Total Non-English	60%

Report for 5 miles Ring Centered at 35.532785,-108.253269  
Report produced September 17, 2024 using EJScreen Version 2.3

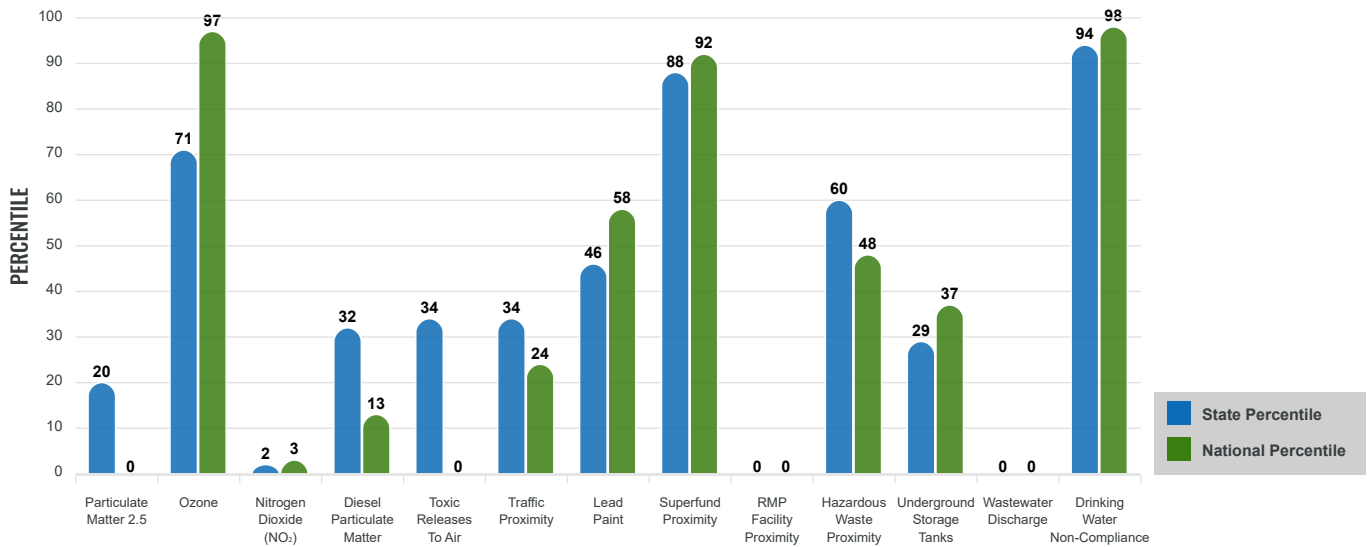
# Environmental Justice & Supplemental Indexes

The environmental justice and supplemental indexes are a combination of environmental and socioeconomic information. There are thirteen EJ indexes and supplemental indexes in EJScreen reflecting the 13 environmental indicators. The indexes for a selected area are compared to those for all other locations in the state or nation. For more information and calculation details on the EJ and supplemental indexes, please visit the [EJScreen website](#).

## EJ INDEXES

The EJ indexes help users screen for potential EJ concerns. To do this, the EJ index combines data on low income and people of color populations with a single environmental indicator.

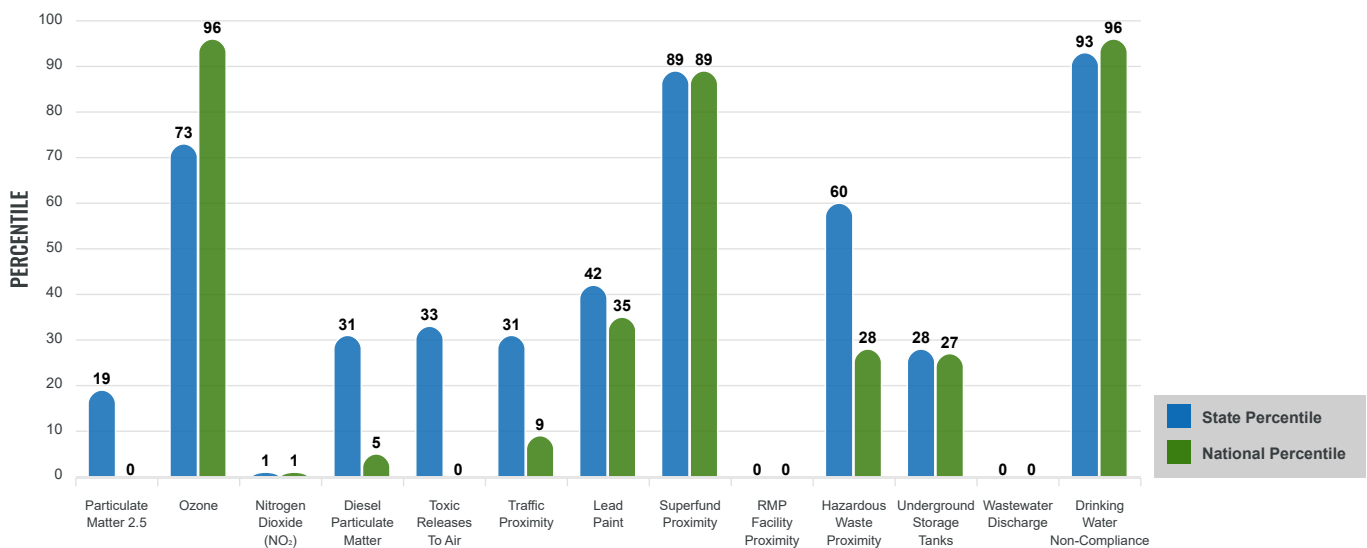
### EJ INDEXES FOR THE SELECTED LOCATION



## SUPPLEMENTAL INDEXES

The supplemental indexes offer a different perspective on community-level vulnerability. They combine data on percent low income, percent persons with disabilities, percent less than high school education, percent limited English speaking, and percent low life expectancy with a single environmental indicator.

### SUPPLEMENTAL INDEXES FOR THE SELECTED LOCATION



Report for 5 miles Ring Centered at 35.532785,-108.253269

Report produced September 17, 2024 using EJScreen Version 2.3

# EJScreen Environmental and Socioeconomic Indicators Data

SELECTED VARIABLES	VALUE	STATE AVERAGE	PERCENTILE IN STATE	USA AVERAGE	PERCENTILE IN USA
<b>ENVIRONMENTAL BURDEN INDICATORS</b>					
Particulate Matter 2.5 (µg/m <sup>3</sup> )	4.74	6.11	8	8.45	0
Ozone (ppb)	64.1	65.3	35	61.8	67
Nitrogen Dioxide (NO <sub>2</sub> ) (ppbv)	1.1	8.1	0	7.8	0
Diesel Particulate Matter (µg/m <sup>3</sup> )	0.0307	0.187	14	0.191	2
Toxic Releases to Air (toxicity-weighted concentration)	0	29	15	4,600	0
Traffic Proximity (daily traffic count/distance to road)	15,000	730,000	17	1,700,000	5
Lead Paint (% Pre-1960 Housing)	0.024	0.19	29	0.3	20
Superfund Proximity (site count/km distance)	0.054	0.34	61	0.39	56
RMP Facility Proximity (facility count/km distance)	0	0.2	0	0.57	0
Hazardous Waste Proximity (facility count/km distance)	0.06	1.2	36	3.5	15
Underground Storage Tanks (count/km <sup>2</sup> )	0.0035	2.8	29	3.6	27
Wastewater Discharge (toxicity-weighted concentration/m distance)	0	990000	0	700000	0
Drinking Water Non-Compliance (points)	1.6	5.6	81	2.2	84
<b>SOCIOECONOMIC INDICATORS</b>					
Demographic Index USA	3.62	N/A	N/A	1.34	99
Supplemental Demographic Index USA	3.09	N/A	N/A	1.64	96
Demographic Index State	3.99	2.16	99	N/A	N/A
Supplemental Demographic Index State	2.84	1.62	95	N/A	N/A
People of Color	99%	62%	96	40%	96
Low Income	87%	39%	98	30%	98
Unemployment Rate	18%	6%	91	6%	94
Limited English Speaking Households	19%	6%	91	5%	92
Less Than High School Education	35%	14%	92	11%	94
Under Age 5	3%	5%	39	5%	32
Over Age 64	17%	20%	50	18%	55

\*Diesel particulate matter index is from the EPA's Air Toxics Data Update, which is the Agency's ongoing, comprehensive evaluation of air toxics in the United States. This effort aims to prioritize air toxics, emission sources, and locations of interest for further study. It is important to remember that the air toxics data presented here provide broad estimates of health risks over geographic areas of the country, not definitive risks to specific individuals or locations. More information on the Air Toxics Data Update can be found at: <https://www.epa.gov/haps/air-toxics-data-update>.

**Sites reporting to EPA within defined area:**

Superfund .....	0
Hazardous Waste, Treatment, Storage, and Disposal Facilities .....	0
Water Dischargers .....	1
Air Pollution .....	0
Brownfields .....	0
Toxic Release Inventory .....	0

**Other community features within defined area:**

Schools .....	1
Hospitals .....	0
Places of Worship .....	1

**Other environmental data:**

Air Non-attainment .....	No
Impaired Waters .....	Yes

Selected location contains American Indian Reservation Lands* .....	Yes
Selected location contains a "Justice40 (CEJST)" disadvantaged community .....	Yes
Selected location contains an EPA IRA disadvantaged community .....	Yes

Report for 5 miles Ring Centered at 35.532785,-108.253269  
 Report produced September 17, 2024 using EJScreen Version 2.3

## EJScreen Environmental and Socioeconomic Indicators Data

### HEALTH INDICATORS

INDICATOR	VALUE	STATE AVERAGE	STATE PERCENTILE	US AVERAGE	US PERCENTILE
Low Life Expectancy	23%	19%	82	20%	80
Heart Disease	9.4	5.9	97	5.8	96
Asthma	16.3	11.2	99	10.3	99
Cancer	5.2	6.1	27	6.4	25
Persons with Disabilities	16.5%	17.1%	51	13.7%	72

### CLIMATE INDICATORS

INDICATOR	VALUE	STATE AVERAGE	STATE PERCENTILE	US AVERAGE	US PERCENTILE
Flood Risk	0%	9%	21	12%	13
Wildfire Risk	0%	58%	0	14%	0

### CRITICAL SERVICE GAPS

INDICATOR	VALUE	STATE AVERAGE	STATE PERCENTILE	US AVERAGE	US PERCENTILE
Broadband Internet	70%	20%	98	13%	99
Lack of Health Insurance	19%	10%	91	9%	91
Housing Burden	No	N/A	N/A	N/A	N/A
Transportation Access Burden	Yes	N/A	N/A	N/A	N/A
Food Desert	Yes	N/A	N/A	N/A	N/A

Report for 5 miles Ring Centered at 35.532785,-108.253269

Report produced September 17, 2024 using EJScreen Version 2.3

Location: User-specified point center at 35.532785, -108.253269  
 Ring (buffer): 5-miles radius  
 Description: Black Jack No. 2 NM0042

Summary of ACS Estimates		2018 - 2022
Population		468
Population Density (per sq. mile)		6
People of Color Population		465
% People of Color Population		99%
Households		162
Housing Units		222
Housing Units Built Before 1950		3
Per Capita Income		13,401
Land Area (sq. miles) (Source: SF1)		78.89
% Land Area		100%
Water Area (sq. miles) (Source: SF1)		0.08
% Water Area		0%

	2018 - 2022 ACS Estimates	Percent	MOE (±)
<b>Population by Race</b>			
Total	468	100%	605
Population Reporting One Race	449	96%	692
White	4	1%	13
Black	0	0%	17
American Indian	442	95%	603
Asian	0	0%	33
Pacific Islander	3	1%	13
Some Other Race	0	0%	13
Population Reporting Two or More Races	19	4%	49
Total Hispanic Population	1	0%	534
Total Non-Hispanic Population	467		
White Alone	3	1%	13
Black Alone	0	0%	17
American Indian Alone	442	95%	339
Non-Hispanic Asian Alone	0	0%	33
Pacific Islander Alone	3	1%	13
Other Race Alone	0	0%	13
Two or More Races Alone	19	4%	49
<b>Population by Sex</b>			
Male	246	53%	380
Female	222	47%	263
<b>Population by Age</b>			
Age 0-4	14	3%	26
Age 0-17	97	21%	239
Age 18+	371	79%	206
Age 65+	81	17%	58

**Data Note:** Detail may not sum to totals due to rounding. Hispanic population can be of any race.

N/A means not available. **Source:** U.S. Census Bureau, American Community Survey (ACS) 2018 - 2022

Location: User-specified point center at 35.532785, -108.253269

Ring (buffer): 5-miles radius

Description: Black Jack No. 2 NM0042

	2018 - 2022 ACS Estimates	Percent	MOE (±)
<b>Population 25+ by Educational Attainment</b>			
Total	320	100%	235
Less than 9th Grade	40	12%	52
9th - 12th Grade, No Diploma	73	23%	62
High School Graduate	135	42%	120
Some College, No Degree	46	14%	50
Associate Degree	11	3%	32
Bachelor's Degree or more	15	5%	41
<b>Population Age 5+ Years by Ability to Speak English</b>			
Total	454	100%	605
Speak only English	145	32%	450
Non-English at Home <sup>1+2+3+4</sup>	310	68%	198
<sup>1</sup> Speak English "very well"	248	55%	162
<sup>2</sup> Speak English "well"	44	10%	108
<sup>3</sup> Speak English "not well"	14	3%	73
<sup>4</sup> Speak English "not at all"	3	1%	45
<sup>3+4</sup> Speak English "less than well"	17	4%	85
<sup>2+3+4</sup> Speak English "less than very well"	61	14%	137
<b>Limited English Speaking Households*</b>			
Total	31	100%	44
Speak Spanish	0	0%	13
Speak Other Indo-European Languages	0	0%	13
Speak Asian-Pacific Island Languages	0	0%	13
Speak Other Languages	31	100%	38
<b>Households by Household Income</b>			
Household Income Base	162	100%	116
< \$15,000	59	36%	47
\$15,000 - \$25,000	35	22%	76
\$25,000 - \$50,000	41	25%	38
\$50,000 - \$75,000	9	6%	52
\$75,000 +	18	11%	40
<b>Occupied Housing Units by Tenure</b>			
Total	162	100%	116
Owner Occupied	147	91%	107
Renter Occupied	15	9%	20
<b>Employed Population Age 16+ Years</b>			
Total	384	100%	375
In Labor Force	137	36%	192
Civilian Unemployed in Labor Force	24	18%	81
Not In Labor Force	247	64%	210

**Data Note:** Detail may not sum to totals due to rounding. Hispanic population can be of anyrace.

N/A means not available. **Source:** U.S. Census Bureau, American Community Survey (ACS)

\*Households in which no one 14 and over speaks English "very well" or speaks English only.

Location: User-specified point center at 35.532785, -108.253269

Ring (buffer): 5-miles radius

Description: Black Jack No. 2 NM0042

	2018 - 2022 ACS Estimates	Percent	MOE (±)
<b>Population by Language Spoken at Home*</b>			
Total (persons age 5 and above)	1,097	100%	267
English	443	40%	189
Spanish	0	0%	13
French, Haitian, or Cajun	0	0%	13
German or other West Germanic	0	0%	13
Russian, Polish, or Other Slavic	0	0%	13
Other Indo-European	0	0%	13
Korean	0	0%	13
Chinese (including Mandarin, Cantonese)	0	0%	13
Vietnamese	0	0%	13
Tagalog (including Filipino)	0	0%	13
Other Asian and Pacific Island	0	0%	13
Arabic	0	0%	13
Other and Unspecified	654	60%	253
Total Non-English	654	60%	327

**Data Note:** Detail may not sum to totals due to rounding. Hispanic population can be of any race.  
N/A means not available. **Source:** U.S. Census Bureau, American Community Survey (ACS) 2018 - 2022.  
\*Population by Language Spoken at Home is available at the census tract summary level and up.