

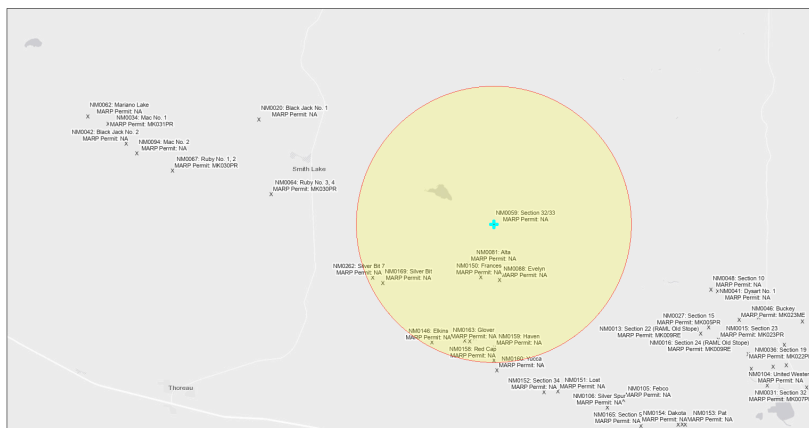


EJScreen Community Report

This report provides environmental and socioeconomic information for user-defined areas, and combines that data into environmental justice and supplemental indexes.

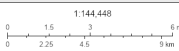
Section 32/33 NM0059

5 miles Ring Centered at 35.490395,-108.016232
Population: 520
Area in square miles: 78.53



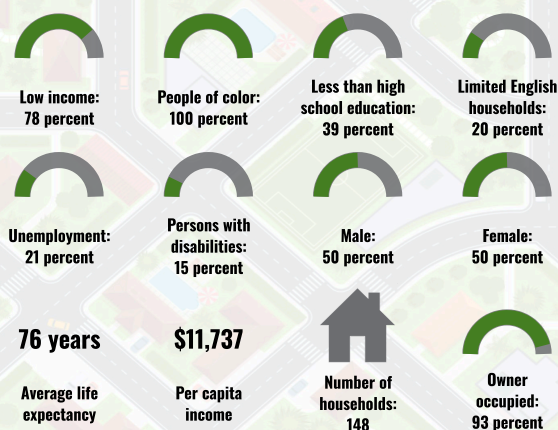
September 18, 2024

Section 32/33 NM0059
* Abandoned Uranium Mines

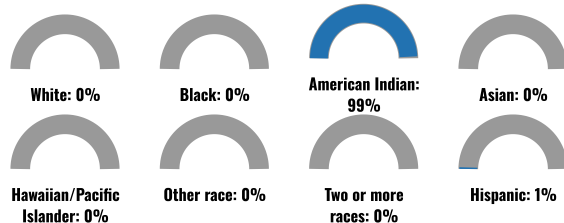


Bureau of Land Management, EPA, HERS, Geomix, USGS, BPA, IHS, New Mexico Energy, Minerals and Natural Resources Department, Eri, HERS, IHS

COMMUNITY INFORMATION



BREAKDOWN BY RACE



BREAKDOWN BY AGE



LIMITED ENGLISH SPEAKING BREAKDOWN



Notes: Numbers may not sum to totals due to rounding. Hispanic population can be of any race. Source: U.S. Census Bureau American Community Survey (ACS) 2018-2022. Life expectancy data comes from the Centers for Disease Control.

LANGUAGES SPOKEN AT HOME

LANGUAGE	PERCENT
No language data available.	

Report for 5 miles Ring Centered at 35.490395,-108.016232
Report produced September 18, 2024 using EJScreen Version 2.3

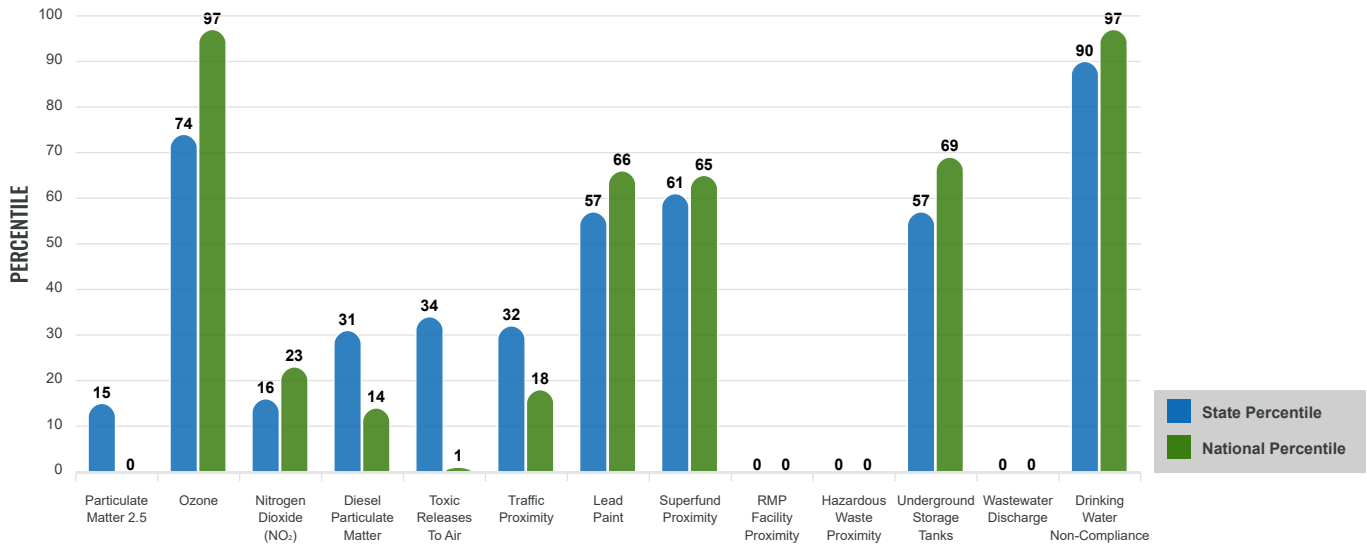
Environmental Justice & Supplemental Indexes

The environmental justice and supplemental indexes are a combination of environmental and socioeconomic information. There are thirteen EJ indexes and supplemental indexes in EJScreen reflecting the 13 environmental indicators. The indexes for a selected area are compared to those for all other locations in the state or nation. For more information and calculation details on the EJ and supplemental indexes, please visit the [EJScreen website](#).

EJ INDEXES

The EJ indexes help users screen for potential EJ concerns. To do this, the EJ index combines data on low income and people of color populations with a single environmental indicator.

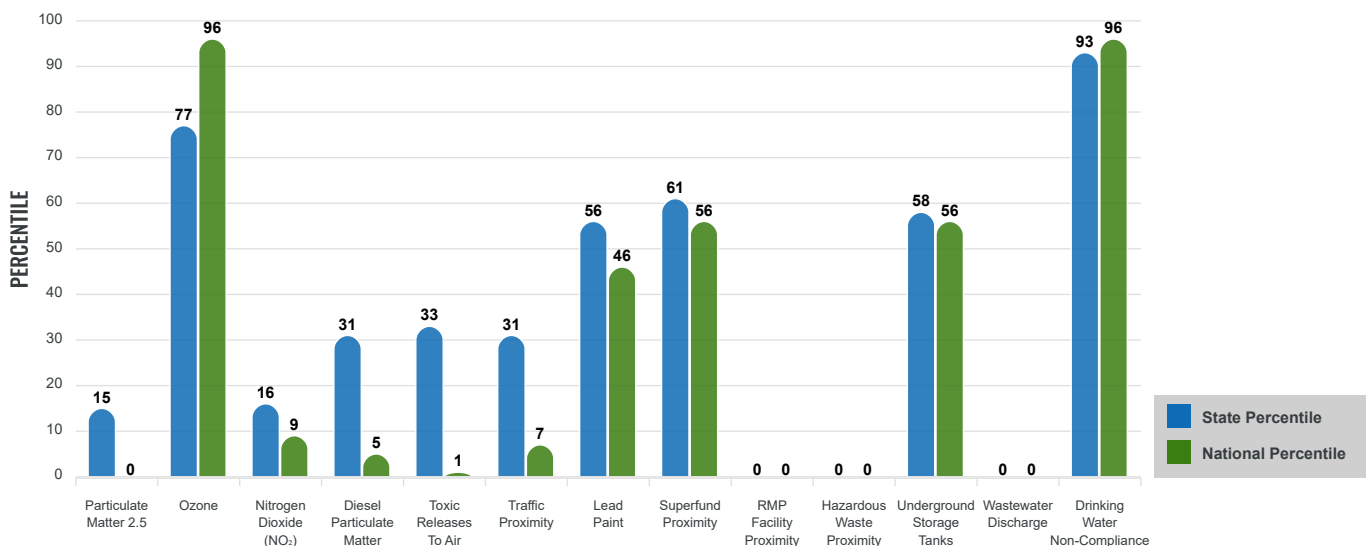
EJ INDEXES FOR THE SELECTED LOCATION



SUPPLEMENTAL INDEXES

The supplemental indexes offer a different perspective on community-level vulnerability. They combine data on percent low income, percent persons with disabilities, percent less than high school education, percent limited English speaking, and percent low life expectancy with a single environmental indicator.

SUPPLEMENTAL INDEXES FOR THE SELECTED LOCATION



Report for 5 miles Ring Centered at 35.490395,-108.016232

Report produced September 18, 2024 using EJScreen Version 2.3

EJScreen Environmental and Socioeconomic Indicators Data

SELECTED VARIABLES	VALUE	STATE AVERAGE	PERCENTILE IN STATE	USA AVERAGE	PERCENTILE IN USA
ENVIRONMENTAL BURDEN INDICATORS					
Particulate Matter 2.5 (µg/m ³)	4.69	6.11	7	8.45	0
Ozone (ppb)	64.7	65.3	37	61.8	69
Nitrogen Dioxide (NO ₂) (ppbv)	2.7	8.1	8	7.8	4
Diesel Particulate Matter (µg/m ³)	0.0314	0.187	15	0.191	2
Toxic Releases to Air (toxicity-weighted concentration)	0	29	16	4,600	1
Traffic Proximity (daily traffic count/distance to road)	9,900	730,000	15	1,700,000	4
Lead Paint (% Pre-1960 Housing)	0.034	0.19	32	0.3	23
Superfund Proximity (site count/km distance)	0.1	0.34	65	0.39	60
RMP Facility Proximity (facility count/km distance)	0	0.2	0	0.57	0
Hazardous Waste Proximity (facility count/km distance)	0	1.2	0	3.5	0
Underground Storage Tanks (count/km ²)	0.034	2.8	34	3.6	30
Wastewater Discharge (toxicity-weighted concentration/m distance)	0	990000	0	700000	0
Drinking Water Non-Compliance (points)	0.83	5.6	74	2.2	76
SOCIOECONOMIC INDICATORS					
Demographic Index USA	3.42	N/A	N/A	1.34	98
Supplemental Demographic Index USA	3.05	N/A	N/A	1.64	96
Demographic Index State	3.81	2.16	98	N/A	N/A
Supplemental Demographic Index State	2.82	1.62	95	N/A	N/A
People of Color	100%	62%	97	40%	97
Low Income	78%	39%	94	30%	97
Unemployment Rate	22%	6%	95	6%	96
Limited English Speaking Households	21%	6%	92	5%	93
Less Than High School Education	39%	14%	95	11%	96
Under Age 5	4%	5%	53	5%	46
Over Age 64	11%	20%	24	18%	29

*Diesel particulate matter index is from the EPA's Air Toxics Data Update, which is the Agency's ongoing, comprehensive evaluation of air toxics in the United States. This effort aims to prioritize air toxics, emission sources, and locations of interest for further study. It is important to remember that the air toxics data presented here provide broad estimates of health risks over geographic areas of the country, not definitive risks to specific individuals or locations. More information on the Air Toxics Data Update can be found at: <https://www.epa.gov/haps/air-toxics-data-update>.

Sites reporting to EPA within defined area:

Superfund	0
Hazardous Waste, Treatment, Storage, and Disposal Facilities	0
Water Dischargers	0
Air Pollution	2
Brownfields	0
Toxic Release Inventory	0

Other community features within defined area:

Schools	0
Hospitals	0
Places of Worship	0

Other environmental data:

Air Non-attainment	No
Impaired Waters	No

Selected location contains American Indian Reservation Lands*	Yes
Selected location contains a "Justice40 (CEJST)" disadvantaged community	Yes
Selected location contains an EPA IRA disadvantaged community	Yes

Report for 5 miles Ring Centered at 35.490395,-108.016232
 Report produced September 18, 2024 using EJScreen Version 2.3

EJScreen Environmental and Socioeconomic Indicators Data

HEALTH INDICATORS

INDICATOR	VALUE	STATE AVERAGE	STATE PERCENTILE	US AVERAGE	US PERCENTILE
Low Life Expectancy	23%	19%	79	20%	78
Heart Disease	9.2	5.9	96	5.8	95
Asthma	15.8	11.2	99	10.3	99
Cancer	5.2	6.1	30	6.4	25
Persons with Disabilities	14.9%	17.1%	42	13.7%	63

CLIMATE INDICATORS

INDICATOR	VALUE	STATE AVERAGE	STATE PERCENTILE	US AVERAGE	US PERCENTILE
Flood Risk	12%	9%	75	12%	73
Wildfire Risk	0%	58%	28	14%	78

CRITICAL SERVICE GAPS

INDICATOR	VALUE	STATE AVERAGE	STATE PERCENTILE	US AVERAGE	US PERCENTILE
Broadband Internet	80%	20%	99	13%	99
Lack of Health Insurance	20%	10%	92	9%	92
Housing Burden	No	N/A	N/A	N/A	N/A
Transportation Access Burden	Yes	N/A	N/A	N/A	N/A
Food Desert	Yes	N/A	N/A	N/A	N/A

Report for 5 miles Ring Centered at 35.490395,-108.016232

Report produced September 18, 2024 using EJScreen Version 2.3

Location: User-specified point center at 35.490395, -108.016232
 Ring (buffer): 5-miles radius
 Description: Section 32/33 NM0059

Summary of ACS Estimates		2018 - 2022
Population		520
Population Density (per sq. mile)		6
People of Color Population		520
% People of Color Population		100%
Households		148
Housing Units		182
Housing Units Built Before 1950		4
Per Capita Income		11,737
Land Area (sq. miles) (Source: SF1)		80.53
% Land Area		100%
Water Area (sq. miles) (Source: SF1)		0.17
% Water Area		0%

	2018 - 2022 ACS Estimates	Percent	MOE (±)
Population by Race			
Total	520	100%	313
Population Reporting One Race	515	99%	378
White	0	0%	13
Black	0	0%	13
American Indian	515	99%	313
Asian	0	0%	13
Pacific Islander	0	0%	13
Some Other Race	0	0%	13
Population Reporting Two or More Races	6	1%	49
Total Hispanic Population	6	1%	49
Total Non-Hispanic Population	515		
White Alone	0	0%	13
Black Alone	0	0%	13
American Indian Alone	515	99%	313
Non-Hispanic Asian Alone	0	0%	13
Pacific Islander Alone	0	0%	13
Other Race Alone	0	0%	13
Two or More Races Alone	0	0%	13
Population by Sex			
Male	259	50%	175
Female	262	50%	149
Population by Age			
Age 0-4	22	4%	39
Age 0-17	143	27%	69
Age 18+	378	73%	116
Age 65+	57	11%	44

Data Note: Detail may not sum to totals due to rounding. Hispanic population can be of any race.

N/A means not available. **Source:** U.S. Census Bureau, American Community Survey (ACS) 2018 - 2022

Location: User-specified point center at 35.490395, -108.016232

Ring (buffer): 5-miles radius

Description: Section 32/33 NM0059

	2018 - 2022 ACS Estimates	Percent	MOE (±)
Population 25+ by Educational Attainment			
Total	322	100%	190
Less than 9th Grade	49	15%	48
9th - 12th Grade, No Diploma	76	24%	57
High School Graduate	106	33%	64
Some College, No Degree	58	18%	50
Associate Degree	15	5%	16
Bachelor's Degree or more	19	6%	35
Population Age 5+ Years by Ability to Speak English			
Total	498	100%	298
Speak only English	127	25%	97
Non-English at Home ¹⁺²⁺³⁺⁴	371	75%	198
¹ Speak English "very well"	244	49%	140
² Speak English "well"	81	16%	108
³ Speak English "not well"	45	9%	73
⁴ Speak English "not at all"	1	0%	44
³⁺⁴ Speak English "less than well"	46	9%	85
²⁺³⁺⁴ Speak English "less than very well"	128	26%	137
Limited English Speaking Households*			
Total	30	100%	44
Speak Spanish	0	0%	13
Speak Other Indo-European Languages	0	0%	13
Speak Asian-Pacific Island Languages	0	0%	13
Speak Other Languages	30	100%	38
Households by Household Income			
Household Income Base	148	100%	67
< \$15,000	56	38%	42
\$15,000 - \$25,000	22	15%	20
\$25,000 - \$50,000	29	20%	39
\$50,000 - \$75,000	23	16%	36
\$75,000 +	18	12%	24
Occupied Housing Units by Tenure			
Total	148	100%	67
Owner Occupied	138	93%	64
Renter Occupied	10	7%	12
Employed Population Age 16+ Years			
Total	401	100%	219
In Labor Force	147	37%	80
Civilian Unemployed in Labor Force	31	21%	43
Not In Labor Force	254	63%	158

Data Note: Detail may not sum to totals due to rounding. Hispanic population can be of anyrace.

N/A means not available. **Source:** U.S. Census Bureau, American Community Survey (ACS)

*Households in which no one 14 and over speaks English "very well" or speaks English only.

Location: User-specified point center at 35.490395, -108.016232

Ring (buffer): 5-miles radius

Description: Section 32/33 NM0059

	2018 - 2022 ACS Estimates	Percent	MOE (±)
Population by Language Spoken at Home*			
Total (persons age 5 and above)	N/A	N/A	N/A
English	N/A	N/A	N/A
Spanish	N/A	N/A	N/A
French, Haitian, or Cajun	N/A	N/A	N/A
German or other West Germanic	N/A	N/A	N/A
Russian, Polish, or Other Slavic	N/A	N/A	N/A
Other Indo-European	N/A	N/A	N/A
Korean	N/A	N/A	N/A
Chinese (including Mandarin, Cantonese)	N/A	N/A	N/A
Vietnamese	N/A	N/A	N/A
Tagalog (including Filipino)	N/A	N/A	N/A
Other Asian and Pacific Island	N/A	N/A	N/A
Arabic	N/A	N/A	N/A
Other and Unspecified	N/A	N/A	N/A
Total Non-English	N/A	N/A	N/A

Data Note: Detail may not sum to totals due to rounding. Hispanic population can be of any race.
 N/A means not available. **Source:** U.S. Census Bureau, American Community Survey (ACS) 2018 - 2022.
 *Population by Language Spoken at Home is available at the census tract summary level and up.