

2016	SDDS	SDDS	SDDS	SDDS	SDDS	SDDS	SDDS	SDDS	SDDS	SDDS	SDDS	SDDS	SDDS	SDDS	SDDS	SDDS	SDDS	SDDS
DATE	CELL 1	CELL 2	CELL 3	CELL 4	CELL 5	CELL 6	CELL 7	CELL 8	CELL 9	CELL 10	CELL 11	CELL 12	CELL 13					
16-Jan	3250	6000	2000	2250	2000	3000	1000	2000	1000	1000	2000	2000	2000	2000	2000	2000	2000	2500
16-Feb	1000	1000	1000	1000	1000	1000	3000	2000	2000	2000	2000	4000	2000	3000				
16-Mar	2000	2000	2000	2000	4250	2000	2250	4000	2000	2000	1000	1000	1000	1000				
16-Apr	3000	3000	6000	7000	3000	3000	1000	1000	2000	1000	1000	2000	2000	2000				
16-May	3000	2000	3000	3000	3000	2000	3000	4000	5000	2000	2000	2000	2000	1000				
16-Jun	2500	2000	2000	2000	2000	2000	1000	3000	1000	2000	4000	2000	2000					
16-Jul	2000	2000	3000	2000	1000	2000	3300	2000	2000	2000	6000	2000	2000					
16-Aug	2000	3000	4000	1000	2000	3200	3000	3000	2000	2000	2000	6000	4000					
16-Sep	5000	4000	2000	4750	4000	2000	2000	3000	2000	6500	2000	2000	3000					
16-Oct	2000	4000	3000	3500	5000	2000	2000	2000	3000	3000	5000	1000	1000					
16-Nov	2000	4000	2000	3650	2000	2000	1000	1000	1000	1000	1000	2000	2000					
16-Dec	2000	2000	1000	1000	1000	1000	2000	2000	2000	2000	2000	2000	2000					

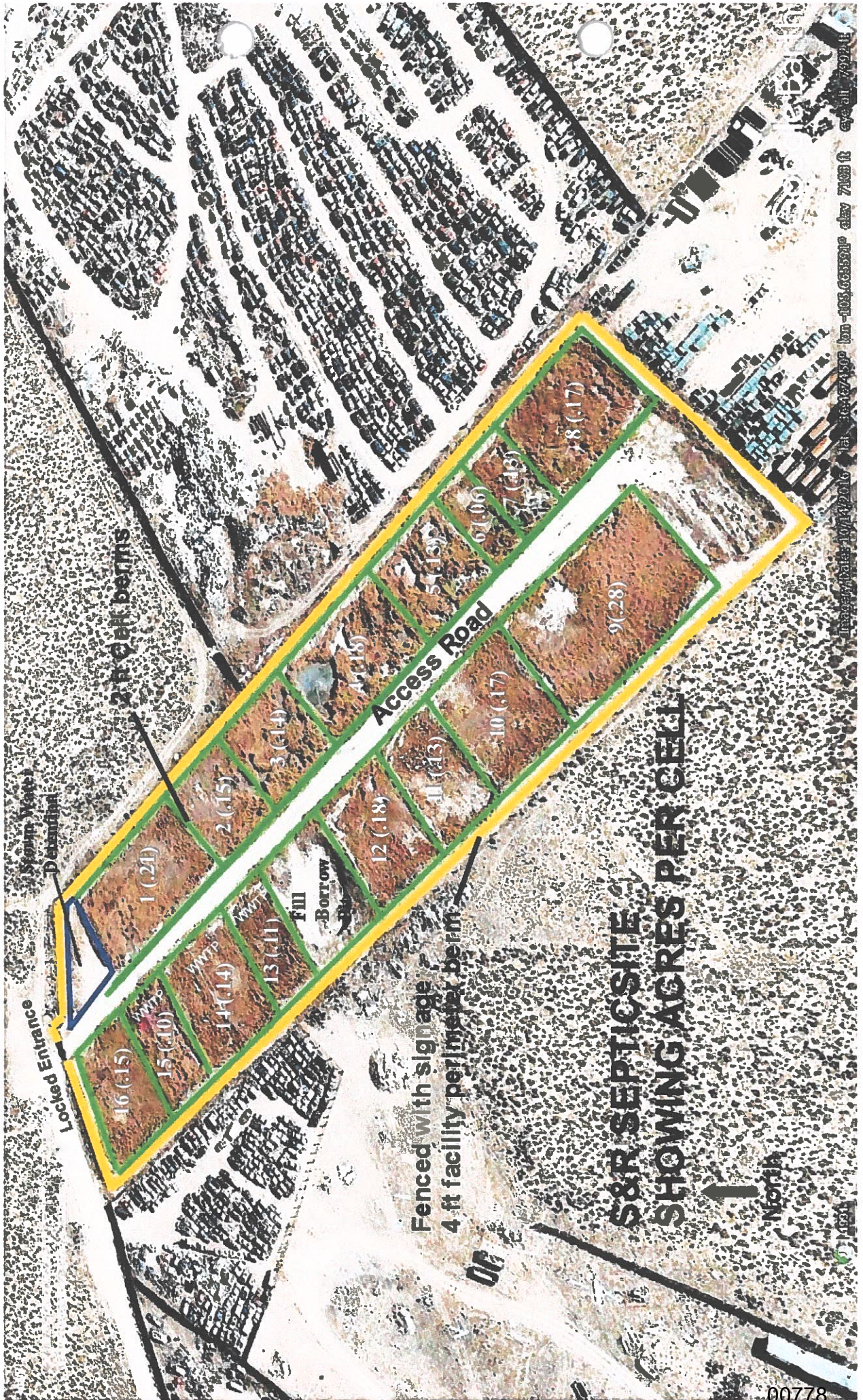


GROUND WATER

OCT 24 2018

BUREAU

DATE	CELL 1	CELL 2	CELL 3	CELL 4	CELL 5	CELL 6	CELL 7	CELL 8	CELL 9	CELL 10	CELL 11	CELL 12	CELL 13
16-Jan	3250	6000	2000	2250	2000	3000	1000	2000	1000	1000	2000	2000	2500
16-Feb	1000	1000	1000	1000	1000	1000	3000	2000	2000	2000	4000	2000	3000
16-Mar	2000	2000	2000	2000	4250	2000	2250	4000	2000	2000	1000	1000	1000
16-Apr	3000	3000	6000	7000	3000	3000	1000	1000	2000	1000	1000	2000	2000
16-May	3000	2000	3000	3000	3000	2000	3000	4000	5000	2000	2000	2000	1000
16-Jun	2500	2000	2000	2000	2000	2000	1000	3000	1000	2000	4000	2000	2000
16-Jul	2000	2000	3000	2000	1000	2000	3300	2000	2000	6000	2000	2000	2000
16-Aug	2000	3000	4000	1000	2000	3200	3000	3000	2000	2000	6000	4000	3250
16-Sep	5000	4000	2000	4750	4000	2000	2000	3000	2000	6500	2000	2000	3000
16-Oct	2000	4000	3000	3500	5000	2000	2000	3000	3000	3000	5000	1000	1000
16-Nov	2000	4000	2000	3650	2000	2000	1000	1000	1000	1000	1000	2000	2000
16-Dec	2000	2000	1000	1000	1000	1000	2000	2000	2000	2000	2000	2000	2250



00778
 10/14/2016
 10-105.000000
 7103 ft
 eye alt 7994 ft

Surface Disposal DS&R Septic

Cell # 1 Acres 0.21 SDDS Calculations DP-465

Reporting Period: Jan-Jun 2016 and Jul - Dec 2016 Assumes 600 mg/L Nitrogen Concentration

Month	Year	Discharge		N-loading (lbs) Total N/Ac
		Volume gallons	V/million Total N V/1000000 600xCx8.34	
Jan	2016	3,250	0.0033	77.44
Feb	2016	1,000	0.0010	23.83
Mar	2016	2,000	0.0020	47.66
Apr	2016	3,000	0.0030	71.49
May	2016	3,000	0.0030	71.49
Jun	2016	2,500	0.0025	59.57
Jan-Jun	Total	14,750		351.47
Jul	2016	2,000	0.0020	47.66
Aug	2016	2,000	0.0020	47.66
Sep	2016	5,000	0.0050	119.14
Oct	2016	2,000	0.0020	47.66
Nov	2016	2,000	0.0020	47.66
Dec	2016	2,000	0.0020	47.66
Jul-Dec	Total	15,000		357.43

Surface Disposal DS&R Septic

Cell # 2 Acres 0.15 SDDS Calculations DP-465

Reporting Period: Jan-Jun 2016 and Jul - Dec 2016 Assumes 600 mg/L Nitrogen Concentration

Month	Year	Discharge		Total N	N-loading (lbs) Total N/Ac
		Volume gallons	V/million V/1000000		
Jan	2016	6,000	0.0060	30.02	142.97
Feb	2016	1,000	0.0010	5.00	23.83
Mar	2016	2,000	0.0020	10.01	47.66
Apr	2016	3,000	0.0030	15.01	71.49
May	2016	2,000	0.0020	10.01	47.66
Jun	2016	2,000	0.0020	10.01	47.66
Jan-Jun	Total	16,000			381.26
Jul	2016	2,000	0.0020	10.01	47.66
Aug	2016	3,000	0.0030	15.01	71.49
Sep	2016	4,000	0.0040	20.02	95.31
Oct	2016	4,000	0.0040	20.02	95.31
Nov	2016	4,000	0.0040	20.02	95.31
Dec	2016	2,000	0.0020	10.01	47.66
Jul-Dec	Total	19,000			452.74

Surface Disposal DS&R Septic

Cell # 3 Acres 0.14 SDDS Calculations DP-465

Reporting Period: Jan-Jun 2016 and Jul - Dec 2016 Assumes 600 mg/L Nitrogen Concentration

Discharge
 Month Year Volume V/million Total N
 gallons V/1000000 600xCx8.34
 N-loading (lbs)
 Total N/Ac

Jan	2016	6,000	0.0060	30.02	214.46
Feb	2016	1,000	0.0010	5.00	35.74
Mar	2016	2,000	0.0020	10.01	71.49
Apr	2016	3,000	0.0030	15.01	107.23
May	2016	2,000	0.0020	10.01	71.49
Jun	2016	2,000	0.0020	10.01	71.49
Jan-Jun	Total	16,000			571.89

Jul	2016	2,000	0.0020	10.01	71.49
Aug	2016	3,000	0.0030	15.01	107.23
Sep	2016	4,000	0.0040	20.02	142.97
Oct	2016	4,000	0.0040	20.02	142.97
Nov	2016	4,000	0.0040	20.02	142.97
Dec	2016	2,000	0.0020	10.01	71.49
Jul-Dec	Total	19,000			679.11

Surface Disposal D S&R Septic

Cell # 4 Acres 0.18 SDDS Calculations DP-465

Reporting Period: Jan-Jun 2016 and Jul - Dec 2016 Assumes 600 mg/L Nitrogen Concentration

Discharge
 Month Year Volume V/million Total N
 gallons V/1000000 600xCx8.34
 N-loading (lbs)
 Total N/Ac

Jan	2016	2,250	0.0023	11.26	62.55
Feb	2016	1,000	0.0010	5.00	27.80
Mar	2016	2,000	0.0020	10.01	55.60
Apr	2016	7,000	0.0070	35.03	194.60
May	2016	3,000	0.0030	15.01	83.40
Jun	2016	2,000	0.0020	10.01	55.60
Jan-Jun	Total	17,250			479.55

Jul	2016	2,000	0.0020	10.01	55.60
Aug	2016	1,000	0.0010	5.00	27.80
Sep	2016	4,750	0.0048	23.77	132.05
Oct	2016	3,500	0.0035	17.51	97.30
Nov	2016	3,650	0.0037	18.26	101.47
Dec	2016	1,000	0.0010	5.00	27.80
Jul-Dec	Total	15,900			442.02

Surface Disposal DS&R Septic

Cell # 5 Acres 0.13 SDDS Calculations DP-465

Reporting Period: Jan-Jun 2016 and Jul - Dec 2016 Assumes 600 mg/L Nitrogen Concentration

Discharge
 Month Year Volume V/million Total N
 gallons V/1000000 600xCx8.34
 N-loading (lbs)
 Total N/Ac

Jan	2016	2,000	0.0020	10.01	76.98
Feb	2016	1,000	0.0010	5.00	38.49
Mar	2016	4,750	0.0048	23.77	182.84
Apr	2016	3,000	0.0030	15.01	115.48
May	2016	3,000	0.0030	15.01	115.48
Jun	2016	2,000	0.0020	10.01	76.98
Jan-Jun	Total	15,750			606.25

Jul	2016	1,000	0.0010	5.00	38.49
Aug	2016	2,000	0.0020	10.01	76.98
Sep	2016	4,000	0.0040	20.02	153.97
Oct	2016	5,000	0.0050	25.02	192.46
Nov	2016	2,000	0.0020	10.01	76.98
Dec	2016	1,000	0.0010	5.00	38.49
Jul-Dec	Total	15,000			577.38

Surface Disposal DS&R Septic

Cell # 6 Acres 0.06 SDDS Calculations DP-465

Reporting Period: Jan-Jun 2016 and Jul - Dec 2016 Assumes 600 mg/L Nitrogen Concentration

Discharge
 Month Year Volume V/million Total N
 gallons V/1000000 600xCx8.34
 N-loading (lbs)
 Total N/Ac

Jan	2016	3,000	0.0030	15.01	250.20
Feb	2016	1,000	0.0010	5.00	83.40
Mar	2016	2,000	0.0020	10.01	166.80
Apr	2016	3,000	0.0030	15.01	250.20
May	2016	2,000	0.0020	10.01	166.80
Jun	2016	2,000	0.0020	10.01	166.80
Jan-Jun	Total	13,000			1,084.20

Jul	2016	2,000	0.0020	10.01	166.80
Aug	2016	3,200	0.0032	16.01	266.88
Sep	2016	2,000	0.0020	10.01	166.80
Oct	2016	2,000	0.0020	10.01	166.80
Nov	2016	2,000	0.0020	10.01	166.80
Dec	2016	1,000	0.0010	5.00	83.40
Jul-Dec	Total	12,200			1,017.48

Surface Disposal DS&R Septic

Cell # 7 Acres 0.13 SDDS Calculations DP-465

Reporting Period: Jan-Jun 2016 and Jul - Dec 2016 Assumes 600 mg/L Nitrogen Concentration

Month	Year	Discharge		N-loading (lbs) Total N/Ac
		Volume gallons	V/million Total N V/1000000 600xCx8.34	
Jan	2016	1,000	0.0010	38.49
Feb	2016	3,000	0.0030	115.48
Mar	2016	2,250	0.0023	86.61
Apr	2016	3,000	0.0030	115.48
May	2016	3,000	0.0030	115.48
Jun	2016	3,000	0.0030	115.48
Jan-Jun	Total	15,250		587.01
Jul	2016	3,300	0.0033	127.02
Aug	2016	3,000	0.0030	115.48
Sep	2016	2,000	0.0020	76.98
Oct	2016	2,000	0.0020	76.98
Nov	2016	1,000	0.0010	38.49
Dec	2016	2,000	0.0020	76.98
Jul-Dec	Total	13,300		511.95

Surface Disposal DS&R Septic

Cell # 8 Acres 0.17 SDDS Calculations DP-465

Reporting Period: Jan-Jun 2016 and Jul - Dec 2016 Assumes 600 mg/L Nitrogen Concentration

Month	Year	Discharge		N-loading (lbs) Total N/Ac
		Volume gallons	V/million Total N V/1000000 600xCx8.34	
Jan	2016	2,000	0.0020	58.87
Feb	2016	2,000	0.0020	58.87
Mar	2016	4,000	0.0040	117.74
Apr	2016	1,000	0.0010	29.44
May	2016	4,000	0.0040	117.74
Jun	2016	3,000	0.0030	88.31
Jan-Jun	Total	16,000		470.96
Jul	2016	2,000	0.0020	58.87
Aug	2016	3,000	0.0030	88.31
Sep	2016	3,000	0.0030	88.31
Oct	2016	2,000	0.0020	58.87
Nov	2016	1,000	0.0010	29.44
Dec	2016	2,000	0.0020	58.87
Jul-Dec	Total	13,000		382.66

Surface Disposal DS&R Septic

Cell # 9 Acres 0.28 SDDS Calculations DP-465

Reporting Period: Jan-Jun 2016 and Jul - Dec 2016 Assumes 600 mg/L Nitrogen Concentration

Discharge
 Month Year Volume V/million Total N
 gallons V/1000000 600xCx8.34
 N-loading (lbs)
 Total N/Ac

Jan	2016	1,000	0.0010	5.00	17.87
Feb	2016	2,000	0.0020	10.01	35.74
Mar	2016	2,000	0.0020	10.01	35.74
Apr	2016	2,000	0.0020	10.01	35.74
May	2016	5,000	0.0050	25.02	89.36
Jun	2016	1,000	0.0010	5.00	17.87
Jan-Jun	Total	13,000			232.33

Jul	2016	2,000	0.0020	10.01	35.74
Aug	2016	2,000	0.0020	10.01	35.74
Sep	2016	2,000	0.0020	10.01	35.74
Oct	2016	3,000	0.0030	15.01	53.61
Nov	2016	1,000	0.0010	5.00	17.87
Dec	2016	2,000	0.0020	10.01	35.74
Jul-Dec	Total	12,000			214.46

Surface Disposal D;S&R Septic

Cell # 10 Acres 0.17 SDDS Calculations DP-465

Reporting Period: Jan-Jun 2016 and Jul - Dec 2016 Assumes 600 mg/L Nitrogen Concentration

Month	Year	Discharge		Total N	N-loading (lbs) Total N/Ac
		Volume gallons	V/million V/1000000		
Jan	2016	1,000	0.0010	5.00	29.44
Feb	2016	2,000	0.0020	10.01	58.87
Mar	2016	2,000	0.0020	10.01	58.87
Apr	2016	1,000	0.0010	5.00	29.44
May	2016	2,000	0.0020	10.01	58.87
Jun	2016	2,000	0.0020	10.01	58.87
Jan-Jun	Total	10,000			294.35

Jul	2016	6,000	0.0060	30.02	176.61
Aug	2016	2,000	0.0020	10.01	58.87
Sep	2016	6,500	0.0065	32.53	191.33
Oct	2016	1,000	0.0010	5.00	29.44
Nov	2016	1,000	0.0010	5.00	29.44
Dec	2016	2,000	0.0020	10.01	58.87
Jul-Dec	Total	18,500			544.55

Surface Disposal D: S&R Septic

Cell # 11 Acres 0.13 SDDS Calculations DP-465

Reporting Period: Jan-Jun 2016 and Jul - Dec 2016 Assumes 600 mg/L Nitrogen Concentration

Discharge
 Month Year Volume gallons V/million Total N V/1000000 600xCx8.34 N-loading (lbs) Total N/Ac

Jan	2016	2,000	0.0020	10.01	76.98
Feb	2016	4,000	0.0040	20.02	153.97
Mar	2016	1,000	0.0010	5.00	38.49
Apr	2016	1,000	0.0010	5.00	38.49
May	2016	2,000	0.0020	10.01	76.98
Jun	2016	4,000	0.0040	20.02	153.97
Jan-Jun	Total	14,000			538.89

Jul	2016	2,000	0.0020	10.01	76.98
Aug	2016	6,000	0.0060	30.02	230.95
Sep	2016	2,000	0.0020	10.01	76.98
Oct	2016	5,000	0.0050	25.02	192.46
Nov	2016	1,000	0.0010	5.00	38.49
Dec	2016	2,000	0.0020	10.01	76.98
Jul-Dec	Total	18,000			692.86

Surface Disposal D: S&R Septic

Cell # 12 Acres 0.18 SDDS Calculations DP-465

Reporting Period: Jan-Jun 2016 and Jul - Dec 2016 Assumes 600 mg/L Nitrogen Concentration

Discharge
 Month Year Volume gallons V/million Total N V/1000000 600xCx8.34 N-loading (lbs) Total N/Ac

Jan	2016	2,000	0.0020	10.01	55.60
Feb	2016	2,000	0.0020	10.01	55.60
Mar	2016	1,000	0.0010	5.00	27.80
Apr	2016	2,000	0.0020	10.01	55.60
May	2016	2,000	0.0020	10.01	55.60
Jun	2016	2,000	0.0020	10.01	55.60
Jan-Jun	Total	11,000			305.80

Jul	2016	2,000	0.0020	10.01	55.60
Aug	2016	4,000	0.0040	20.02	111.20
Sep	2016	2,000	0.0020	10.01	55.60
Oct	2016	1,000	0.0010	5.00	27.80
Nov	2016	2,000	0.0020	10.01	55.60
Dec	2016	2,000	0.0020	10.01	55.60
Jul-Dec	Total	13,000			361.40

Surface Disposal D S&R Septic

Cell # 13 Acres 0.11 SDDS Calculations DP-465

Reporting Period: Jan-Jun 2016 and Jul - Dec 2016 Assumes 600 mg/L Nitrogen Concentration

Month	Year	Discharge		N-loading (lbs) Total N/Ac
		Volume gallons	V/million Total N V/1000000x600xCx8.34	
Jan	2016	2,500	0.0025	113.73
Feb	2016	3,000	0.0030	136.47
Mar	2016	1,000	0.0010	45.49
Apr	2016	2,000	0.0020	90.98
May	2016	1,000	0.0010	45.49
Jun	2016	2,000	0.0020	90.98
Jan-Jun	Total	11,500		523.15
Jul	2016	2,000	0.0020	90.98
Aug	2016	3,250	0.0033	147.85
Sep	2016	3,000	0.0030	136.47
Oct	2016	1,000	0.0010	45.49
Nov	2016	2,000	0.0020	90.98
Dec	2016	2,250	0.0023	102.35
Jul-Dec	Total	13,500		614.13

20.7.3.306 STANDARDS; SEPTAGE: Disposal of septage shall occur only at a permitted facility with the knowledge and consent of the facility owner, and shall not cause a hazard to public health nor degrade a body of water. Transport and disposal of septage shall be in conformance with applicable federal, state and local regulations. Septage pumpers shall keep customer invoices and disposal records for three years and shall, upon written request by the department, make such records available to the department for inspection.