



# EJScreen Community Report

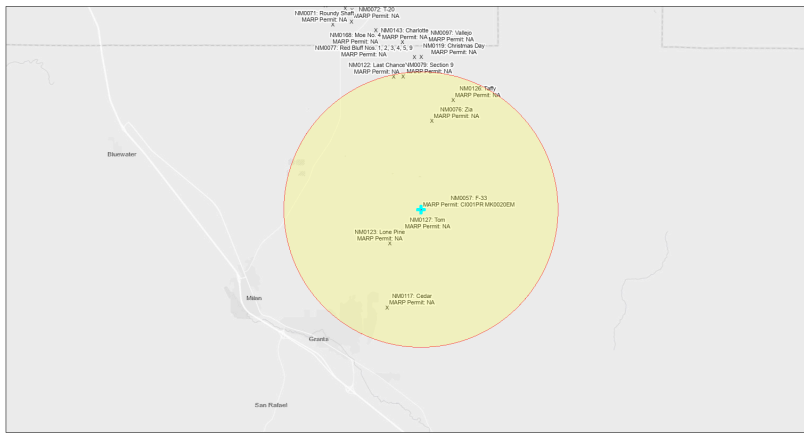
This report provides environmental and socioeconomic information for user-defined areas, and combines that data into environmental justice and supplemental indexes.

## F-33 NM0057

5 miles Ring Centered at 35.218536,-107.783936

Population: 4,601

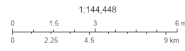
Area in square miles: 78.53



September 18, 2024

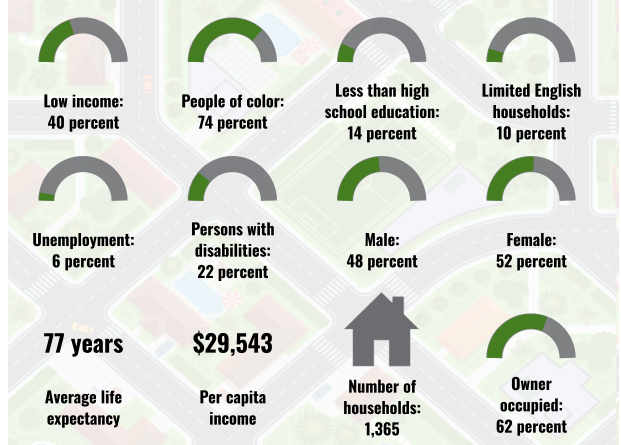
F-33 NM0057

\* Abandoned Uranium Mines

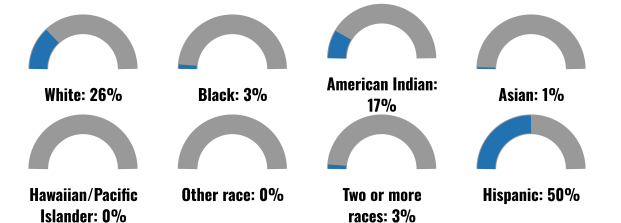


Bureau of Land Management, EPA, HERR, Geotitles, USGS, BIA, IHS, New Mexico Energy, Storage and Natural Resources Department, EIS, HERR, IHS

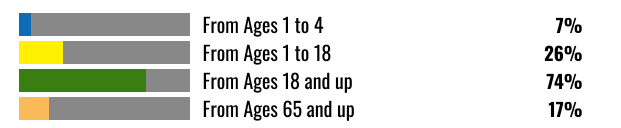
### COMMUNITY INFORMATION



### BREAKDOWN BY RACE



### BREAKDOWN BY AGE



### LIMITED ENGLISH SPEAKING BREAKDOWN



### LANGUAGES SPOKEN AT HOME

LANGUAGE	PERCENT
English	52%
Spanish	40%
Other and Unspecified	8%
Total Non-English	48%

Notes: Numbers may not sum to totals due to rounding. Hispanic population can be of any race. Source: U.S. Census Bureau American Community Survey (ACS) 2018-2022. Life expectancy data comes from the Centers for Disease Control.

Report for 5 miles Ring Centered at 35.218536,-107.783936

Report produced September 18, 2024 using EJScreen Version 2.3

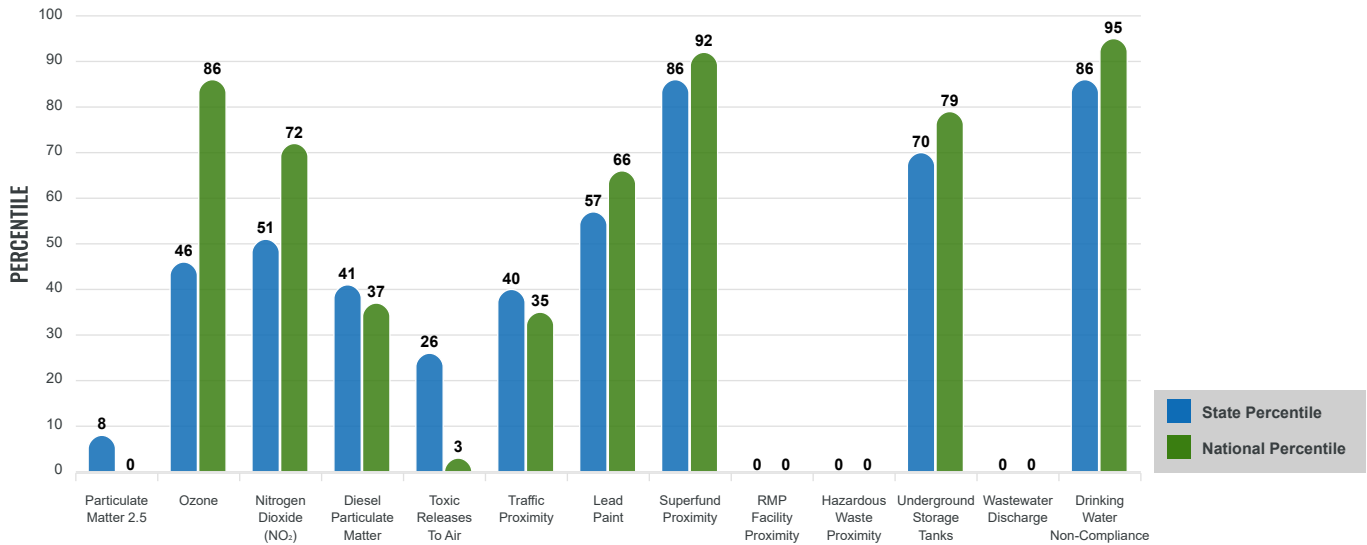
# Environmental Justice & Supplemental Indexes

The environmental justice and supplemental indexes are a combination of environmental and socioeconomic information. There are thirteen EJ indexes and supplemental indexes in EJScreen reflecting the 13 environmental indicators. The indexes for a selected area are compared to those for all other locations in the state or nation. For more information and calculation details on the EJ and supplemental indexes, please visit the [EJScreen website](#).

## EJ INDEXES

The EJ indexes help users screen for potential EJ concerns. To do this, the EJ index combines data on low income and people of color populations with a single environmental indicator.

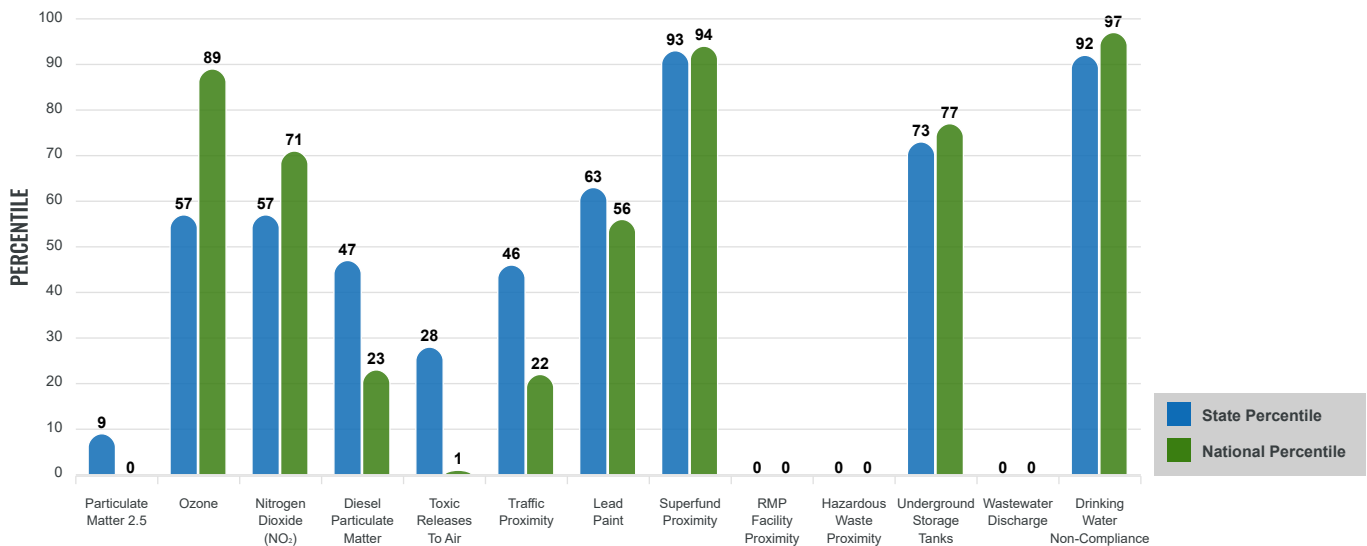
### EJ INDEXES FOR THE SELECTED LOCATION



## SUPPLEMENTAL INDEXES

The supplemental indexes offer a different perspective on community-level vulnerability. They combine data on percent low income, percent persons with disabilities, percent less than high school education, percent limited English speaking, and percent low life expectancy with a single environmental indicator.

### SUPPLEMENTAL INDEXES FOR THE SELECTED LOCATION



Report for 5 miles Ring Centered at 35.218536,-107.783936

Report produced September 18, 2024 using EJScreen Version 2.3

# EJScreen Environmental and Socioeconomic Indicators Data

SELECTED VARIABLES	VALUE	STATE AVERAGE	PERCENTILE IN STATE	USA AVERAGE	PERCENTILE IN USA
<b>ENVIRONMENTAL BURDEN INDICATORS</b>					
Particulate Matter 2.5 (µg/m <sup>3</sup> )	4.63	6.11	6	8.45	0
Ozone (ppb)	64.5	65.3	36	61.8	69
Nitrogen Dioxide (NO <sub>2</sub> ) (ppbv)	7.2	8.1	35	7.8	45
Diesel Particulate Matter (µg/m <sup>3</sup> )	0.0647	0.187	32	0.191	14
Toxic Releases to Air (toxicity-weighted concentration)	0.23	29	38	4,600	3
Traffic Proximity (daily traffic count/distance to road)	60,000	730,000	30	1,700,000	13
Lead Paint (% Pre-1960 Housing)	0.11	0.19	53	0.3	37
Superfund Proximity (site count/km distance)	1.4	0.34	95	0.39	93
RMP Facility Proximity (facility count/km distance)	0	0.2	0	0.57	0
Hazardous Waste Proximity (facility count/km distance)	0	1.2	0	3.5	0
Underground Storage Tanks (count/km <sup>2</sup> )	2.6	2.8	71	3.6	67
Wastewater Discharge (toxicity-weighted concentration/m distance)	0	990000	0	700000	0
Drinking Water Non-Compliance (points)	17	5.6	88	2.2	97
<b>SOCIOECONOMIC INDICATORS</b>					
Demographic Index USA	2.1	N/A	N/A	1.34	80
Supplemental Demographic Index USA	2.29	N/A	N/A	1.64	84
Demographic Index State	2.41	2.16	59	N/A	N/A
Supplemental Demographic Index State	2.04	1.62	74	N/A	N/A
People of Color	74%	62%	64	40%	80
Low Income	40%	39%	51	30%	70
Unemployment Rate	7%	6%	65	6%	71
Limited English Speaking Households	9%	6%	77	5%	84
Less Than High School Education	14%	14%	61	11%	70
Under Age 5	7%	5%	75	5%	73
Over Age 64	17%	20%	49	18%	54

\*Diesel particulate matter index is from the EPA's Air Toxics Data Update, which is the Agency's ongoing, comprehensive evaluation of air toxics in the United States. This effort aims to prioritize air toxics, emission sources, and locations of interest for further study. It is important to remember that the air toxics data presented here provide broad estimates of health risks over geographic areas of the country, not definitive risks to specific individuals or locations. More information on the Air Toxics Data Update can be found at: <https://www.epa.gov/haps/air-toxics-data-update>.

**Sites reporting to EPA within defined area:**

Superfund .....	2
Hazardous Waste, Treatment, Storage, and Disposal Facilities .....	0
Water Dischargers .....	6
Air Pollution .....	5
Brownfields .....	0
Toxic Release Inventory .....	0

**Other community features within defined area:**

Schools .....	4
Hospitals .....	1
Places of Worship .....	0

**Other environmental data:**

Air Non-attainment .....	No
Impaired Waters .....	No

Selected location contains American Indian Reservation Lands* .....	Yes
Selected location contains a "Justice40 (CEJST)" disadvantaged community .....	Yes
Selected location contains an EPA IRA disadvantaged community .....	Yes

Report for 5 miles Ring Centered at 35.218536,-107.783936  
 Report produced September 18, 2024 using EJScreen Version 2.3

## EJScreen Environmental and Socioeconomic Indicators Data

### HEALTH INDICATORS

INDICATOR	VALUE	STATE AVERAGE	STATE PERCENTILE	US AVERAGE	US PERCENTILE
Low Life Expectancy	23%	19%	85	20%	81
Heart Disease	6.5	5.9	65	5.8	66
Asthma	11.8	11.2	79	10.3	86
Cancer	5.5	6.1	38	6.4	31
Persons with Disabilities	22%	17.1%	79	13.7%	90

### CLIMATE INDICATORS

INDICATOR	VALUE	STATE AVERAGE	STATE PERCENTILE	US AVERAGE	US PERCENTILE
Flood Risk	7%	9%	56	12%	52
Wildfire Risk	12%	58%	32	14%	82

### CRITICAL SERVICE GAPS

INDICATOR	VALUE	STATE AVERAGE	STATE PERCENTILE	US AVERAGE	US PERCENTILE
Broadband Internet	26%	20%	70	13%	87
Lack of Health Insurance	6%	10%	35	9%	44
Housing Burden	No	N/A	N/A	N/A	N/A
Transportation Access Burden	Yes	N/A	N/A	N/A	N/A
Food Desert	Yes	N/A	N/A	N/A	N/A

Report for 5 miles Ring Centered at 35.218536,-107.783936

Report produced September 18, 2024 using EJScreen Version 2.3

Location: User-specified point center at 35.218536, -107.783936  
 Ring (buffer): 5-miles radius  
 Description: F-33 NM0057

Summary of ACS Estimates		2018 - 2022
Population		4,601
Population Density (per sq. mile)		64
People of Color Population		3,422
% People of Color Population		74%
Households		1,365
Housing Units		1,691
Housing Units Built Before 1950		57
Per Capita Income		29,543
Land Area (sq. miles) (Source: SF1)		71.90
% Land Area		100%
Water Area (sq. miles) (Source: SF1)		0.05
% Water Area		0%

	2018 - 2022 ACS Estimates	Percent	MOE (±)
<b>Population by Race</b>			
Total	4,601	100%	666
Population Reporting One Race	3,944	86%	1,331
White	2,561	56%	555
Black	142	3%	196
American Indian	949	21%	312
Asian	32	1%	62
Pacific Islander	0	0%	13
Some Other Race	260	6%	193
Population Reporting Two or More Races	657	14%	267
Total Hispanic Population	2,323	50%	631
Total Non-Hispanic Population	2,278		
White Alone	1,179	26%	256
Black Alone	141	3%	196
American Indian Alone	777	17%	271
Non-Hispanic Asian Alone	32	1%	62
Pacific Islander Alone	0	0%	13
Other Race Alone	17	0%	29
Two or More Races Alone	132	3%	105
<b>Population by Sex</b>			
Male	2,190	48%	415
Female	2,411	52%	377
<b>Population by Age</b>			
Age 0-4	340	7%	109
Age 0-17	1,188	26%	291
Age 18+	3,413	74%	419
Age 65+	790	17%	203

**Data Note:** Detail may not sum to totals due to rounding. Hispanic population can be of any race.

N/A means not available. **Source:** U.S. Census Bureau, American Community Survey (ACS) 2018 - 2022

Location: User-specified point center at 35.218536, -107.783936

Ring (buffer): 5-miles radius

Description: F-33 NM0057

	2018 - 2022 ACS Estimates	Percent	MOE (±)
<b>Population 25+ by Educational Attainment</b>			
Total	3,052	100%	388
Less than 9th Grade	89	3%	83
9th - 12th Grade, No Diploma	336	11%	117
High School Graduate	924	30%	270
Some College, No Degree	728	24%	192
Associate Degree	302	10%	199
Bachelor's Degree or more	673	22%	257
<b>Population Age 5+ Years by Ability to Speak English</b>			
Total	4,262	100%	636
Speak only English	2,693	63%	401
Non-English at Home <sup>1+2+3+4</sup>	1,569	37%	364
<sup>1</sup> Speak English "very well"	1,234	29%	307
<sup>2</sup> Speak English "well"	178	4%	83
<sup>3</sup> Speak English "not well"	108	3%	108
<sup>4</sup> Speak English "not at all"	49	1%	145
<sup>3+4</sup> Speak English "less than well"	157	4%	180
<sup>2+3+4</sup> Speak English "less than very well"	335	8%	196
<b>Limited English Speaking Households*</b>			
Total	130	100%	74
Speak Spanish	115	88%	71
Speak Other Indo-European Languages	8	6%	13
Speak Asian-Pacific Island Languages	0	0%	13
Speak Other Languages	7	6%	60
<b>Households by Household Income</b>			
Household Income Base	1,365	100%	250
< \$15,000	259	19%	98
\$15,000 - \$25,000	120	9%	78
\$25,000 - \$50,000	271	20%	140
\$50,000 - \$75,000	145	11%	213
\$75,000 +	570	42%	248
<b>Occupied Housing Units by Tenure</b>			
Total	1,365	100%	250
Owner Occupied	840	62%	256
Renter Occupied	525	38%	204
<b>Employed Population Age 16+ Years</b>			
Total	3,499	100%	473
In Labor Force	1,787	51%	398
Civilian Unemployed in Labor Force	115	6%	104
Not In Labor Force	1,712	49%	356

**Data Note:** Detail may not sum to totals due to rounding. Hispanic population can be of anyrace.

N/A means not available. **Source:** U.S. Census Bureau, American Community Survey (ACS)

\*Households in which no one 14 and over speaks English "very well" or speaks English only.

Location: User-specified point center at 35.218536, -107.783936

Ring (buffer): 5-miles radius

Description: F-33 NM0057

	2018 - 2022 ACS Estimates	Percent	MOE (±)
<b>Population by Language Spoken at Home*</b>			
Total (persons age 5 and above)	1,848	100%	450
English	954	52%	558
Spanish	730	40%	582
French, Haitian, or Cajun	3	0%	13
German or other West Germanic	0	0%	19
Russian, Polish, or Other Slavic	0	0%	19
Other Indo-European	7	0%	21
Korean	0	0%	19
Chinese (including Mandarin, Cantonese)	0	0%	19
Vietnamese	0	0%	19
Tagalog (including Filipino)	0	0%	19
Other Asian and Pacific Island	0	0%	19
Arabic	0	0%	19
Other and Unspecified	154	8%	212
Total Non-English	894	48%	717

**Data Note:** Detail may not sum to totals due to rounding. Hispanic population can be of any race.  
N/A means not available. **Source:** U.S. Census Bureau, American Community Survey (ACS) 2018 - 2022.  
\*Population by Language Spoken at Home is available at the census tract summary level and up.