

# West Microgrid: EJSscreen MAP 4-miles - Long/Lat: 31.8233, -106.7131

**EJSscreen** Environmental Justice Screening and Mapping Tool (Version 2.3) [Share data feedback](#) | [Mobile](#) | [Glossary](#) | [Help](#)

This is an unofficial copy of EJSscreen hosted by the Public Environmental Data Partners. Some links and text may incorrectly suggest that this site is affiliated with the US Government.

**Add Maps & Data**

**Additional Demographics**

**Boundaries**

**Measure**

**Print**

**Save Session**

**Side by Side Map Comparisons**

**Threshold Map**

**Multisite Tool**

31.8233, -106.7131

**Map Contents**

- Tribal Lands
  - Alaska Native Allotments
  - Alaska Native Villages
  - American Indian Reservations
  - Off-reservation Trust Lands
  - Oklahoma Tribal Statistical Areas
- Tribal Cession Boundaries
- Other Indigenous Areas
  - Alaska Native Regional Corporations
  - State-recognized Reservations
  - Hawaiian Native Home Lands
  - State-designated Tribal Statistical Areas
- NM State Colonias

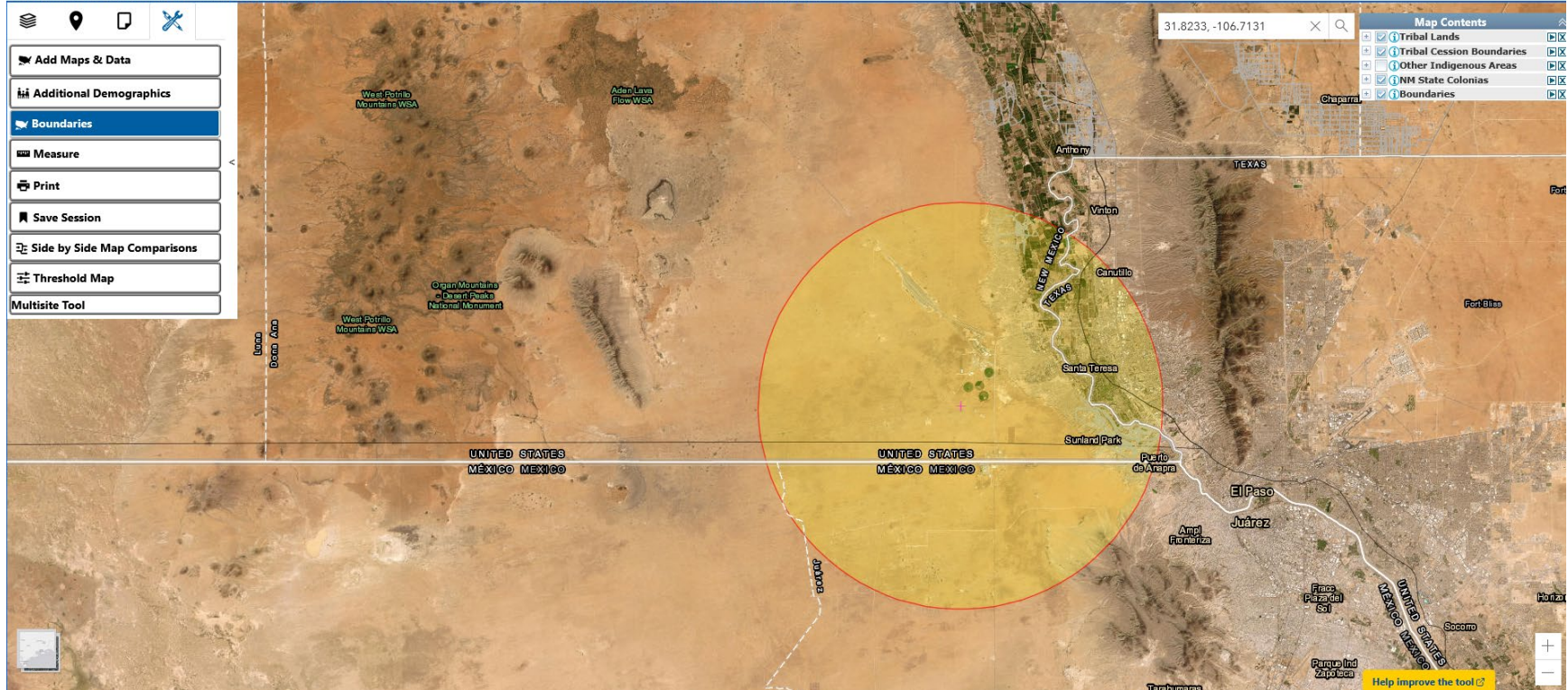
[Help improve the tool](#)

# West Microgrid: EJSscreen MAP 10 miles - Long/Lat: 31.8233, -106.7131

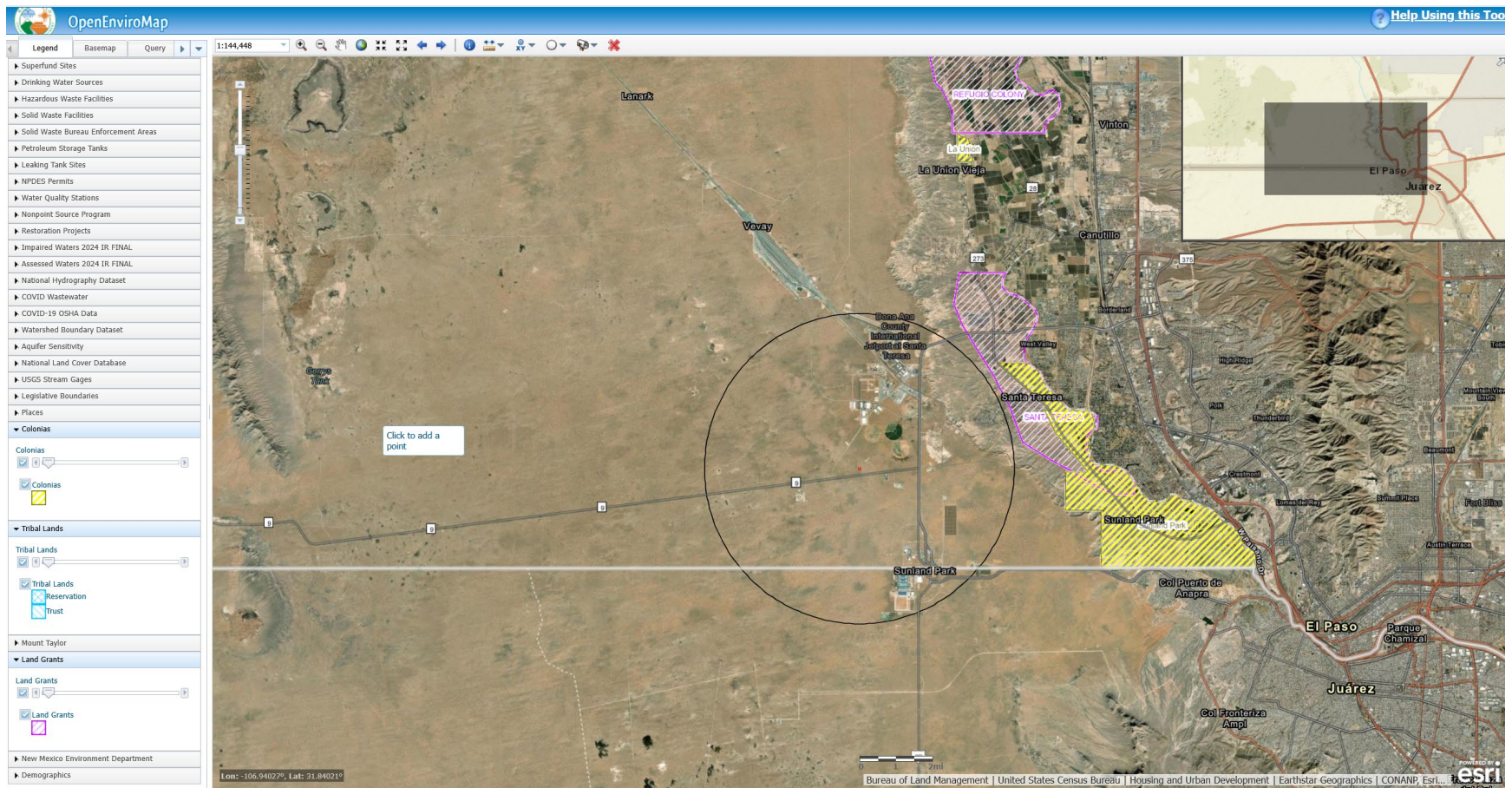
**EJSscreen** Environmental Justice Screening and Mapping Tool (Version 2.3)

[Share data feedback](#) | [Mobile](#) | [Glossary](#) | [Help](#)

This is an unofficial copy of EJSscreen hosted by the [Public Environmental Data Partners](#). Some links and text may incorrectly suggest that this site is affiliated with the US Government.



# West Microgrid: New Mexico OpenEnviroMap 4-miles Long/Lat: 31.8233, -106.7131



West Microgrid: New Mexico OpenEnviroMap 10-miles Long/Lat: 31.8233, -106.7131

