



EJScreen Community Report

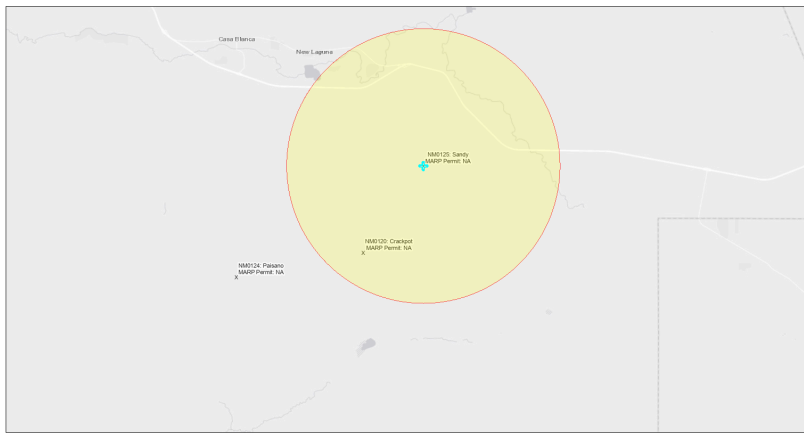
This report provides environmental and socioeconomic information for user-defined areas, and combines that data into environmental justice and supplemental indexes.

Sandy NM0125

5 miles Ring Centered at 34.984978,-107.354343

Population: 2,072

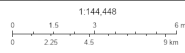
Area in square miles: 78.53



September 23, 2024

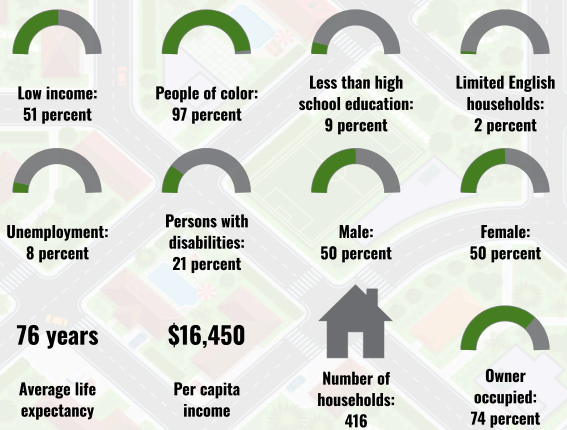
Sandy NM0125

* Abandoned Uranium Mines

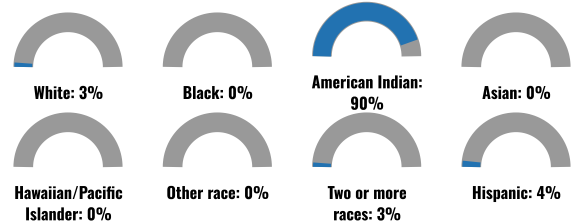


Bureau of Land Management, EPA, HERE, Garmin, IGO, IGN, NPS, New Mexico Energy Storage and Natural Resources Department, Esri, HERE, UPS

COMMUNITY INFORMATION



BREAKDOWN BY RACE



BREAKDOWN BY AGE



LIMITED ENGLISH SPEAKING BREAKDOWN



LANGUAGES SPOKEN AT HOME

LANGUAGE	PERCENT
English	49%
French, Haitian, or Cajun	1%
Other and Unspecified	49%
Total Non-English	51%

Notes: Numbers may not sum to totals due to rounding. Hispanic population can be of any race. Source: U.S. Census Bureau, American Community Survey (ACS) 2018-2022. Life expectancy data comes from the Centers for Disease Control.

Report for 5 miles Ring Centered at 34.984978,-107.354343

Report produced September 23, 2024 using EJScreen Version 2.3

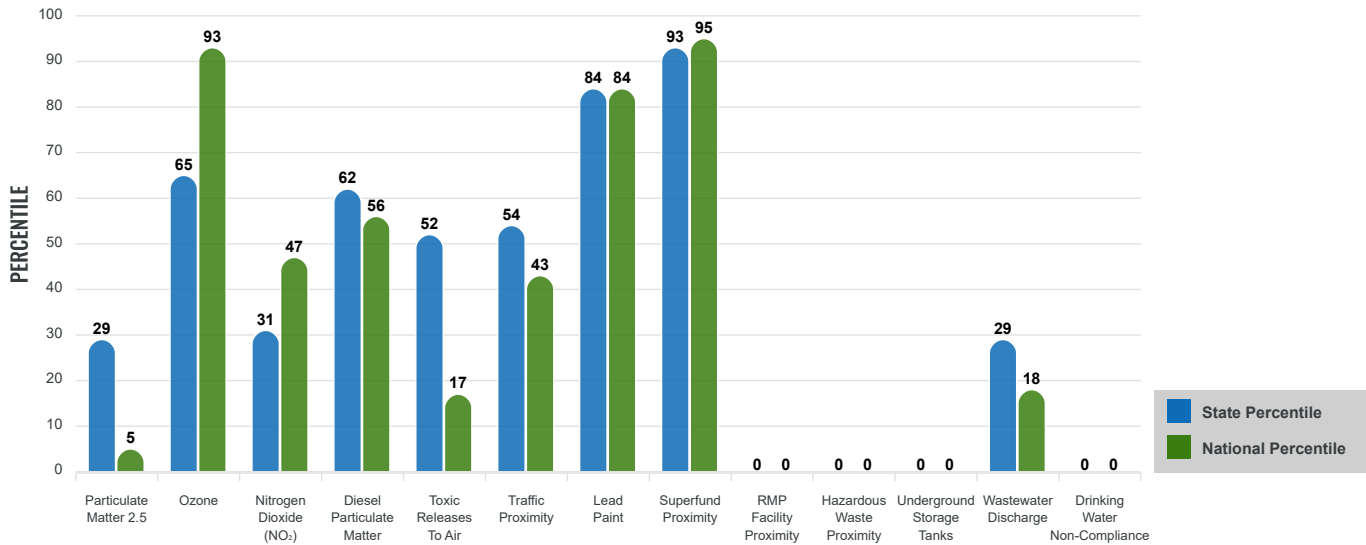
Environmental Justice & Supplemental Indexes

The environmental justice and supplemental indexes are a combination of environmental and socioeconomic information. There are thirteen EJ indexes and supplemental indexes in EJScreen reflecting the 13 environmental indicators. The indexes for a selected area are compared to those for all other locations in the state or nation. For more information and calculation details on the EJ and supplemental indexes, please visit the [EJScreen website](#).

EJ INDEXES

The EJ indexes help users screen for potential EJ concerns. To do this, the EJ index combines data on low income and people of color populations with a single environmental indicator.

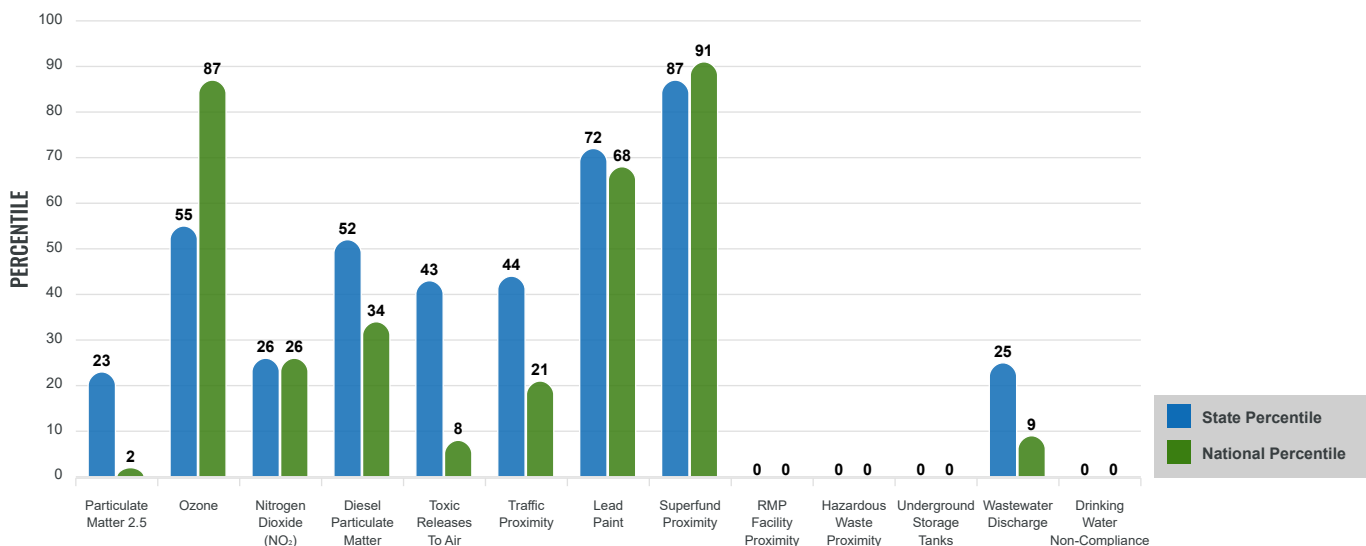
EJ INDEXES FOR THE SELECTED LOCATION



SUPPLEMENTAL INDEXES

The supplemental indexes offer a different perspective on community-level vulnerability. They combine data on percent low income, percent persons with disabilities, percent less than high school education, percent limited English speaking, and percent low life expectancy with a single environmental indicator.

SUPPLEMENTAL INDEXES FOR THE SELECTED LOCATION



Report for 5 miles Ring Centered at 34.984978,-107.354343

Report produced September 23, 2024 using EJScreen Version 2.3

EJScreen Environmental and Socioeconomic Indicators Data

SELECTED VARIABLES	VALUE	STATE AVERAGE	PERCENTILE IN STATE	USA AVERAGE	PERCENTILE IN USA
ENVIRONMENTAL BURDEN INDICATORS					
Particulate Matter 2.5 (µg/m ³)	5.01	6.11	16	8.45	1
Ozone (ppb)	65	65.3	39	61.8	70
Nitrogen Dioxide (NO ₂) (ppbv)	4.1	8.1	18	7.8	15
Diesel Particulate Matter (µg/m ³)	0.0816	0.187	39	0.191	21
Toxic Releases to Air (toxicity-weighted concentration)	5.3	29	47	4,600	7
Traffic Proximity (daily traffic count/distance to road)	71,000	730,000	32	1,700,000	14
Lead Paint (% Pre-1960 Housing)	0.23	0.19	68	0.3	52
Superfund Proximity (site count/km distance)	1.6	0.34	95	0.39	94
RMP Facility Proximity (facility count/km distance)	0	0.2	0	0.57	0
Hazardous Waste Proximity (facility count/km distance)	0	1.2	0	3.5	0
Underground Storage Tanks (count/km ²)	0	2.8	0	3.6	0
Wastewater Discharge (toxicity-weighted concentration/m distance)	0.00018	990000	24	700000	8
Drinking Water Non-Compliance (points)	0	5.6	0	2.2	0
SOCIOECONOMIC INDICATORS					
Demographic Index USA	2.75	N/A	N/A	1.34	92
Supplemental Demographic Index USA	2.14	N/A	N/A	1.64	79
Demographic Index State	3.15	2.16	85	N/A	N/A
Supplemental Demographic Index State	1.86	1.62	66	N/A	N/A
People of Color	97%	62%	93	40%	94
Low Income	51%	39%	69	30%	82
Unemployment Rate	8%	6%	68	6%	74
Limited English Speaking Households	2%	6%	49	5%	63
Less Than High School Education	9%	14%	46	11%	55
Under Age 5	4%	5%	46	5%	40
Over Age 64	14%	20%	37	18%	41

*Diesel particulate matter index is from the EPA's Air Toxics Data Update, which is the Agency's ongoing, comprehensive evaluation of air toxics in the United States. This effort aims to prioritize air toxics, emission sources, and locations of interest for further study. It is important to remember that the air toxics data presented here provide broad estimates of health risks over geographic areas of the country, not definitive risks to specific individuals or locations. More information on the Air Toxics Data Update can be found at: <https://www.epa.gov/haps/air-toxics-data-update>.

Sites reporting to EPA within defined area:

Superfund	0
Hazardous Waste, Treatment, Storage, and Disposal Facilities	0
Water Dischargers	18
Air Pollution	2
Brownfields	1
Toxic Release Inventory	0

Other community features within defined area:

Schools	2
Hospitals	0
Places of Worship	3

Other environmental data:

Air Non-attainment	No
Impaired Waters	No

Selected location contains American Indian Reservation Lands*	Yes
Selected location contains a "Justice40 (CEJST)" disadvantaged community	Yes
Selected location contains an EPA IRA disadvantaged community	Yes

Report for 5 miles Ring Centered at 34.984978,-107.354343
 Report produced September 23, 2024 using EJScreen Version 2.3

EJScreen Environmental and Socioeconomic Indicators Data

HEALTH INDICATORS

INDICATOR	VALUE	STATE AVERAGE	STATE PERCENTILE	US AVERAGE	US PERCENTILE
Low Life Expectancy	23%	19%	79	20%	78
Heart Disease	8.5	5.9	93	5.8	92
Asthma	14.1	11.2	94	10.3	98
Cancer	6.5	6.1	63	6.4	50
Persons with Disabilities	21.4%	17.1%	77	13.7%	89

CLIMATE INDICATORS

INDICATOR	VALUE	STATE AVERAGE	STATE PERCENTILE	US AVERAGE	US PERCENTILE
Flood Risk	13%	9%	78	12%	75
Wildfire Risk	36%	58%	35	14%	84

CRITICAL SERVICE GAPS

INDICATOR	VALUE	STATE AVERAGE	STATE PERCENTILE	US AVERAGE	US PERCENTILE
Broadband Internet	55%	20%	94	13%	99
Lack of Health Insurance	17%	10%	86	9%	88
Housing Burden	No	N/A	N/A	N/A	N/A
Transportation Access Burden	Yes	N/A	N/A	N/A	N/A
Food Desert	No	N/A	N/A	N/A	N/A

Report for 5 miles Ring Centered at 34.984978,-107.354343

Report produced September 23, 2024 using EJScreen Version 2.3

Location: User-specified point center at 34.984978, -107.354343
 Ring (buffer): 5-miles radius
 Description: Sandy NM0125

Summary of ACS Estimates		2018 - 2022
Population		2,072
Population Density (per sq. mile)		24
People of Color Population		2,012
% People of Color Population		97%
Households		416
Housing Units		545
Housing Units Built Before 1950		110
Per Capita Income		16,450
Land Area (sq. miles) (Source: SF1)		85.02
% Land Area		100%
Water Area (sq. miles) (Source: SF1)		0.03
% Water Area		0%

	2018 - 2022 ACS Estimates	Percent	MOE (±)
Population by Race			
Total	2,072	100%	639
Population Reporting One Race	2,015	97%	755
White	63	3%	67
Black	1	0%	13
American Indian	1,950	94%	636
Asian	0	0%	13
Pacific Islander	0	0%	13
Some Other Race	0	0%	13
Population Reporting Two or More Races	58	3%	137
Total Hispanic Population	89	4%	175
Total Non-Hispanic Population	1,983		
White Alone	60	3%	67
Black Alone	1	0%	13
American Indian Alone	1,868	90%	627
Non-Hispanic Asian Alone	0	0%	13
Pacific Islander Alone	0	0%	13
Other Race Alone	0	0%	13
Two or More Races Alone	54	3%	134
Population by Sex			
Male	1,032	50%	346
Female	1,041	50%	342
Population by Age			
Age 0-4	77	4%	72
Age 0-17	543	26%	186
Age 18+	1,529	74%	321
Age 65+	290	14%	119

Data Note: Detail may not sum to totals due to rounding. Hispanic population can be of any race.

N/A means not available. **Source:** U.S. Census Bureau, American Community Survey (ACS) 2018 - 2022

Location: User-specified point center at 34.984978, -107.354343
 Ring (buffer): 5-miles radius
 Description: Sandy NM0125

	2018 - 2022 ACS Estimates	Percent	MOE (±)
Population 25+ by Educational Attainment			
Total	1,298	100%	401
Less than 9th Grade	40	3%	63
9th - 12th Grade, No Diploma	77	6%	107
High School Graduate	518	40%	212
Some College, No Degree	410	32%	186
Associate Degree	185	14%	105
Bachelor's Degree or more	67	5%	92
Population Age 5+ Years by Ability to Speak English			
Total	1,996	100%	627
Speak only English	938	47%	409
Non-English at Home ¹⁺²⁺³⁺⁴	1,057	53%	392
¹ Speak English "very well"	960	48%	381
² Speak English "well"	87	4%	97
³ Speak English "not well"	11	1%	51
⁴ Speak English "not at all"	0	0%	45
³⁺⁴ Speak English "less than well"	11	1%	68
²⁺³⁺⁴ Speak English "less than very well"	98	5%	115
Limited English Speaking Households*			
Total	8	100%	40
Speak Spanish	0	0%	13
Speak Other Indo-European Languages	0	0%	13
Speak Asian-Pacific Island Languages	0	0%	13
Speak Other Languages	8	100%	33
Households by Household Income			
Household Income Base	416	100%	123
< \$15,000	80	19%	80
\$15,000 - \$25,000	32	8%	70
\$25,000 - \$50,000	147	35%	84
\$50,000 - \$75,000	58	14%	66
\$75,000 +	98	24%	78
Occupied Housing Units by Tenure			
Total	416	100%	123
Owner Occupied	309	74%	105
Renter Occupied	107	26%	99
Employed Population Age 16+ Years			
Total	1,576	100%	488
In Labor Force	746	47%	307
Civilian Unemployed in Labor Force	58	8%	62
Not In Labor Force	830	53%	295

Data Note: Detail may not sum to totals due to rounding. Hispanic population can be of anyrace.

N/A means not available. **Source:** U.S. Census Bureau, American Community Survey (ACS)

*Households in which no one 14 and over speaks English "very well" or speaks English only.

Location: User-specified point center at 34.984978, -107.354343

Ring (buffer): 5-miles radius

Description: Sandy NM0125

	2018 - 2022 ACS Estimates	Percent	MOE (±)
Population by Language Spoken at Home*			
Total (persons age 5 and above)	1,269	100%	678
English	628	49%	639
Spanish	5	0%	31
French, Haitian, or Cajun	12	1%	65
German or other West Germanic	0	0%	13
Russian, Polish, or Other Slavic	0	0%	13
Other Indo-European	0	0%	13
Korean	0	0%	13
Chinese (including Mandarin, Cantonese)	0	0%	13
Vietnamese	0	0%	13
Tagalog (including Filipino)	0	0%	13
Other Asian and Pacific Island	0	0%	13
Arabic	0	0%	13
Other and Unspecified	624	49%	662
Total Non-English	641	51%	932

Data Note: Detail may not sum to totals due to rounding. Hispanic population can be of any race.
N/A means not available. **Source:** U.S. Census Bureau, American Community Survey (ACS) 2018 - 2022.
*Population by Language Spoken at Home is available at the census tract summary level and up.