

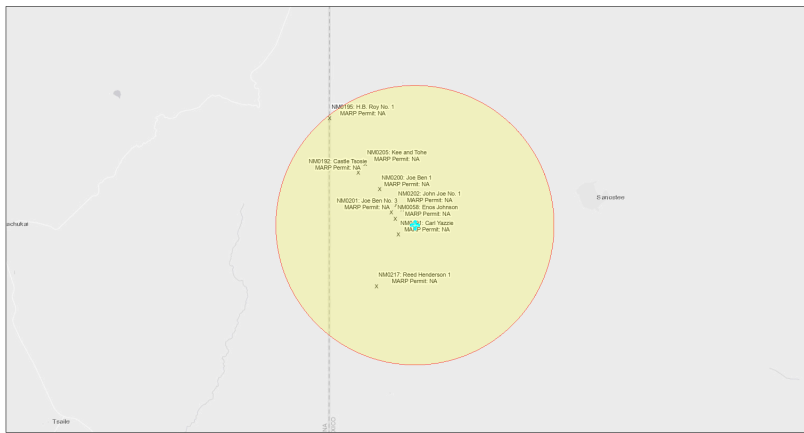


EJScreen Community Report

This report provides environmental and socioeconomic information for user-defined areas, and combines that data into environmental justice and supplemental indexes.

Horace Ben 1 NM0197

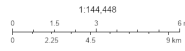
5 miles Ring Centered at 36.410716,-108.990331
Population: 228
Area in square miles: 78.53



September 25, 2024

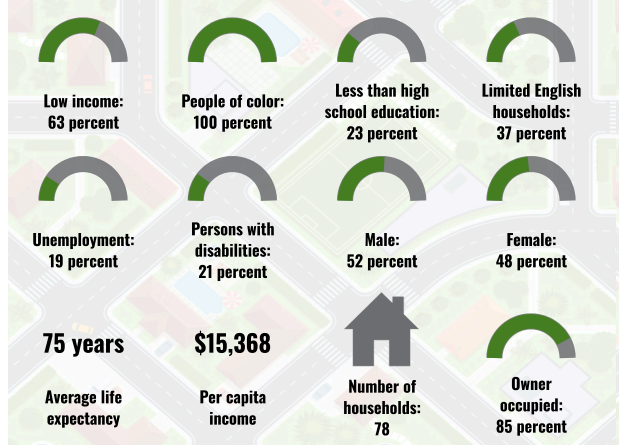
Horace Ben 1 NM0197

* Abandoned Uranium Mines

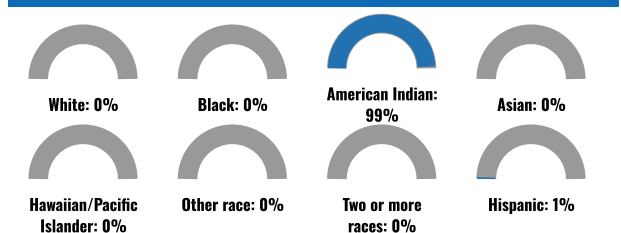


San Juan County, NM, Bureau of Land Management, Rio, HEM, Grants, HECO, EPA, IFC, New Mexico Energy Minerals and Natural Resources Department, Rio, HEM, IFC

COMMUNITY INFORMATION



BREAKDOWN BY RACE



BREAKDOWN BY AGE



LIMITED ENGLISH SPEAKING BREAKDOWN



Notes: Numbers may not sum to totals due to rounding. Hispanic population can be of any race. Source: U.S. Census Bureau, American Community Survey (ACS) 2018-2022. Life expectancy data comes from the Centers for Disease Control.

LANGUAGES SPOKEN AT HOME

LANGUAGE	PERCENT
No language data available.	

Report for 5 miles Ring Centered at 36.410716,-108.990331
Report produced September 25, 2024 using EJScreen Version 2.3

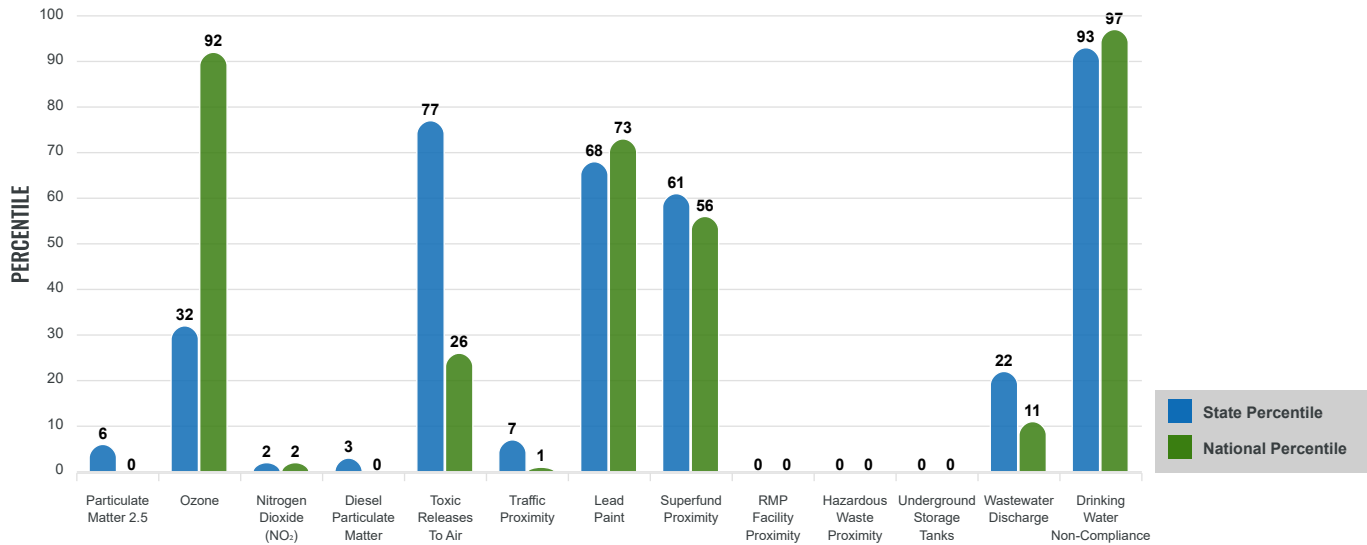
Environmental Justice & Supplemental Indexes

The environmental justice and supplemental indexes are a combination of environmental and socioeconomic information. There are thirteen EJ indexes and supplemental indexes in EJScreen reflecting the 13 environmental indicators. The indexes for a selected area are compared to those for all other locations in the state or nation. For more information and calculation details on the EJ and supplemental indexes, please visit the [EJScreen website](#).

EJ INDEXES

The EJ indexes help users screen for potential EJ concerns. To do this, the EJ index combines data on low income and people of color populations with a single environmental indicator.

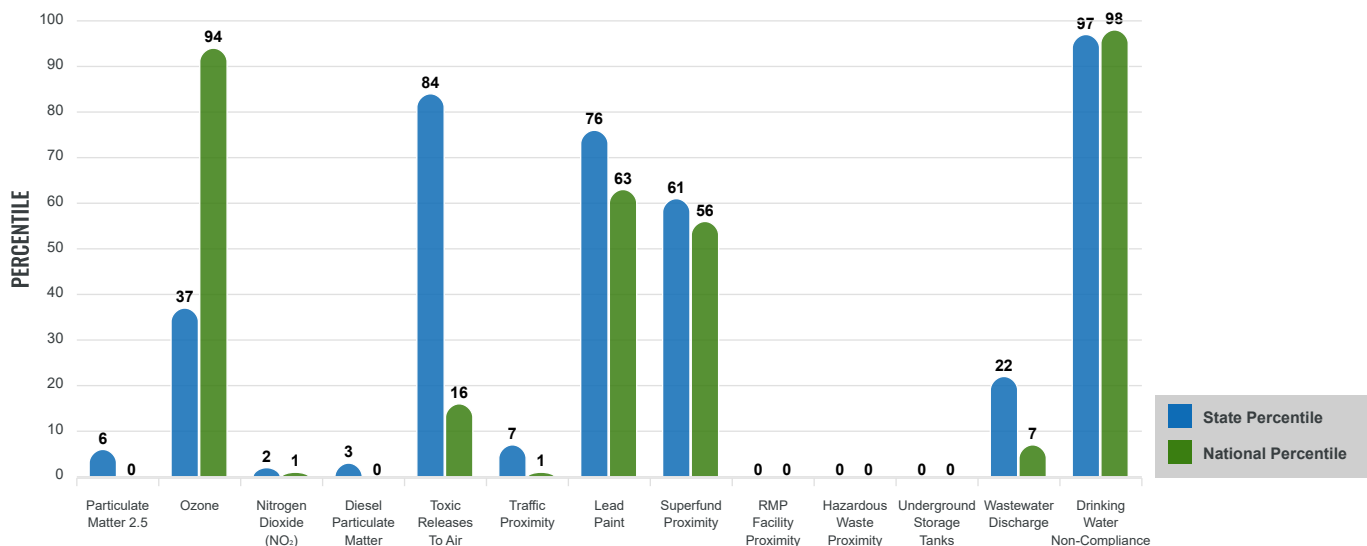
EJ INDEXES FOR THE SELECTED LOCATION



SUPPLEMENTAL INDEXES

The supplemental indexes offer a different perspective on community-level vulnerability. They combine data on percent low income, percent persons with disabilities, percent less than high school education, percent limited English speaking, and percent low life expectancy with a single environmental indicator.

SUPPLEMENTAL INDEXES FOR THE SELECTED LOCATION



Report for 5 miles Ring Centered at 36.410716,-108.990331

Report produced September 25, 2024 using EJScreen Version 2.3

EJScreen Environmental and Socioeconomic Indicators Data

SELECTED VARIABLES	VALUE	STATE AVERAGE	PERCENTILE IN STATE	USA AVERAGE	PERCENTILE IN USA
ENVIRONMENTAL BURDEN INDICATORS					
Particulate Matter 2.5 (µg/m ³)	4.55	6.11	4	8.45	0
Ozone (ppb)	62.8	65.3	16	61.8	61
Nitrogen Dioxide (NO ₂) (ppbv)	1.6	8.1	1	7.8	0
Diesel Particulate Matter (µg/m ³)	0.00926	0.187	1	0.191	0
Toxic Releases to Air (toxicity-weighted concentration)	7.3	29	49	4,600	8
Traffic Proximity (daily traffic count/distance to road)	7.8	730,000	7	1,700,000	1
Lead Paint (% Pre-1960 Housing)	0.072	0.19	42	0.3	31
Superfund Proximity (site count/km distance)	0.0085	0.34	61	0.39	56
RMP Facility Proximity (facility count/km distance)	0	0.2	0	0.57	0
Hazardous Waste Proximity (facility count/km distance)	0	1.2	0	3.5	0
Underground Storage Tanks (count/km ²)	0	2.8	0	3.6	0
Wastewater Discharge (toxicity-weighted concentration/m distance)	3.2	990000	42	700000	28
Drinking Water Non-Compliance (points)	1	5.6	76	2.2	78
SOCIOECONOMIC INDICATORS					
Demographic Index USA	3.05	N/A	N/A	1.34	95
Supplemental Demographic Index USA	3.14	N/A	N/A	1.64	97
Demographic Index State	3.45	2.16	92	N/A	N/A
Supplemental Demographic Index State	2.98	1.62	97	N/A	N/A
People of Color	100%	62%	97	40%	97
Low Income	63%	39%	82	30%	90
Unemployment Rate	19%	6%	93	6%	95
Limited English Speaking Households	37%	6%	98	5%	97
Less Than High School Education	23%	14%	79	11%	86
Under Age 5	2%	5%	32	5%	26
Over Age 64	18%	20%	53	18%	59

*Diesel particulate matter index is from the EPA's Air Toxics Data Update, which is the Agency's ongoing, comprehensive evaluation of air toxics in the United States. This effort aims to prioritize air toxics, emission sources, and locations of interest for further study. It is important to remember that the air toxics data presented here provide broad estimates of health risks over geographic areas of the country, not definitive risks to specific individuals or locations. More information on the Air Toxics Data Update can be found at: <https://www.epa.gov/haps/air-toxics-data-update>.

Sites reporting to EPA within defined area:

Superfund	0
Hazardous Waste, Treatment, Storage, and Disposal Facilities	0
Water Dischargers	0
Air Pollution	0
Brownfields	0
Toxic Release Inventory	0

Other community features within defined area:

Schools	0
Hospitals	0
Places of Worship	0

Other environmental data:

Air Non-attainment	No
Impaired Waters	No

Selected location contains American Indian Reservation Lands*	Yes
Selected location contains a "Justice40 (CEJST)" disadvantaged community	Yes
Selected location contains an EPA IRA disadvantaged community	Yes

Report for 5 miles Ring Centered at 36.410716,-108.990331
 Report produced September 25, 2024 using EJScreen Version 2.3

EJScreen Environmental and Socioeconomic Indicators Data

HEALTH INDICATORS

INDICATOR	VALUE	STATE AVERAGE	STATE PERCENTILE	US AVERAGE	US PERCENTILE
Low Life Expectancy	23%	19%	83	20%	81
Heart Disease	10.3	5.9	98	5.8	98
Asthma	15.6	11.2	98	10.3	99
Cancer	6.3	6.1	55	6.4	44
Persons with Disabilities	20.9%	17.1%	74	13.7%	87

CLIMATE INDICATORS

INDICATOR	VALUE	STATE AVERAGE	STATE PERCENTILE	US AVERAGE	US PERCENTILE
Flood Risk	N/A	9%	N/A	12%	N/A
Wildfire Risk	N/A	58%	N/A	14%	N/A

CRITICAL SERVICE GAPS

INDICATOR	VALUE	STATE AVERAGE	STATE PERCENTILE	US AVERAGE	US PERCENTILE
Broadband Internet	75%	20%	99	13%	99
Lack of Health Insurance	20%	10%	92	9%	92
Housing Burden	No	N/A	N/A	N/A	N/A
Transportation Access Burden	Yes	N/A	N/A	N/A	N/A
Food Desert	Yes	N/A	N/A	N/A	N/A

Report for 5 miles Ring Centered at 36.410716,-108.990331

Report produced September 25, 2024 using EJScreen Version 2.3

Location: User-specified point center at 36.410716, -108.990331
 Ring (buffer): 5-miles radius
 Description: Horace Ben 1 NM0197

Summary of ACS Estimates		2018 - 2022
Population		228
Population Density (per sq. mile)		3
People of Color Population		228
% People of Color Population		100%
Households		78
Housing Units		135
Housing Units Built Before 1950		5
Per Capita Income		15,368
Land Area (sq. miles) (Source: SF1)		83.73
% Land Area		100%
Water Area (sq. miles) (Source: SF1)		0.02
% Water Area		0%

	2018 - 2022 ACS Estimates	Percent	MOE (±)
Population by Race			
Total	228	100%	269
Population Reporting One Race	227	99%	339
White	0	0%	13
Black	0	0%	14
American Indian	227	99%	268
Asian	0	0%	13
Pacific Islander	0	0%	17
Some Other Race	0	0%	14
Population Reporting Two or More Races	1	1%	16
Total Hispanic Population	2	1%	14
Total Non-Hispanic Population	226		
White Alone	0	0%	13
Black Alone	0	0%	14
American Indian Alone	226	99%	268
Non-Hispanic Asian Alone	0	0%	13
Pacific Islander Alone	0	0%	17
Other Race Alone	0	0%	14
Two or More Races Alone	0	0%	16
Population by Sex			
Male	120	52%	171
Female	109	48%	122
Population by Age			
Age 0-4	5	2%	42
Age 0-17	52	23%	68
Age 18+	177	77%	142
Age 65+	42	18%	69

Data Note: Detail may not sum to totals due to rounding. Hispanic population can be of any race.

N/A means not available. **Source:** U.S. Census Bureau, American Community Survey (ACS) 2018 - 2022

Location: User-specified point center at 36.410716, -108.990331
 Ring (buffer): 5-miles radius
 Description: Horace Ben 1 NM0197

	2018 - 2022 ACS Estimates	Percent	MOE (±)
Population 25+ by Educational Attainment			
Total	164	100%	165
Less than 9th Grade	17	10%	43
9th - 12th Grade, No Diploma	21	13%	39
High School Graduate	77	47%	76
Some College, No Degree	32	19%	77
Associate Degree	12	7%	65
Bachelor's Degree or more	5	3%	36
Population Age 5+ Years by Ability to Speak English			
Total	223	100%	249
Speak only English	68	30%	109
Non-English at Home ¹⁺²⁺³⁺⁴	155	70%	173
¹ Speak English "very well"	79	36%	160
² Speak English "well"	58	26%	79
³ Speak English "not well"	17	8%	78
⁴ Speak English "not at all"	1	1%	47
³⁺⁴ Speak English "less than well"	18	8%	88
²⁺³⁺⁴ Speak English "less than very well"	76	34%	107
Limited English Speaking Households*			
Total	29	100%	70
Speak Spanish	0	0%	14
Speak Other Indo-European Languages	0	0%	14
Speak Asian-Pacific Island Languages	0	0%	14
Speak Other Languages	29	100%	66
Households by Household Income			
Household Income Base	78	100%	66
< \$15,000	14	18%	42
\$15,000 - \$25,000	18	23%	63
\$25,000 - \$50,000	25	32%	46
\$50,000 - \$75,000	11	14%	17
\$75,000 +	10	13%	30
Occupied Housing Units by Tenure			
Total	78	100%	66
Owner Occupied	66	85%	57
Renter Occupied	12	15%	63
Employed Population Age 16+ Years			
Total	187	100%	224
In Labor Force	65	35%	109
Civilian Unemployed in Labor Force	13	19%	29
Not In Labor Force	122	65%	165

Data Note: Detail may not sum to totals due to rounding. Hispanic population can be of anyrace.

N/A means not available. **Source:** U.S. Census Bureau, American Community Survey (ACS)

*Households in which no one 14 and over speaks English "very well" or speaks English only.

Location: User-specified point center at 36.410716, -108.990331

Ring (buffer): 5-miles radius

Description: Horace Ben 1 NM0197

	2018 - 2022 ACS Estimates	Percent	MOE (±)
Population by Language Spoken at Home*			
Total (persons age 5 and above)	N/A	N/A	N/A
English	N/A	N/A	N/A
Spanish	N/A	N/A	N/A
French, Haitian, or Cajun	N/A	N/A	N/A
German or other West Germanic	N/A	N/A	N/A
Russian, Polish, or Other Slavic	N/A	N/A	N/A
Other Indo-European	N/A	N/A	N/A
Korean	N/A	N/A	N/A
Chinese (including Mandarin, Cantonese)	N/A	N/A	N/A
Vietnamese	N/A	N/A	N/A
Tagalog (including Filipino)	N/A	N/A	N/A
Other Asian and Pacific Island	N/A	N/A	N/A
Arabic	N/A	N/A	N/A
Other and Unspecified	N/A	N/A	N/A
Total Non-English	N/A	N/A	N/A

Data Note: Detail may not sum to totals due to rounding. Hispanic population can be of any race.
 N/A means not available. **Source:** U.S. Census Bureau, American Community Survey (ACS) 2018 - 2022.
 *Population by Language Spoken at Home is available at the census tract summary level and up.