

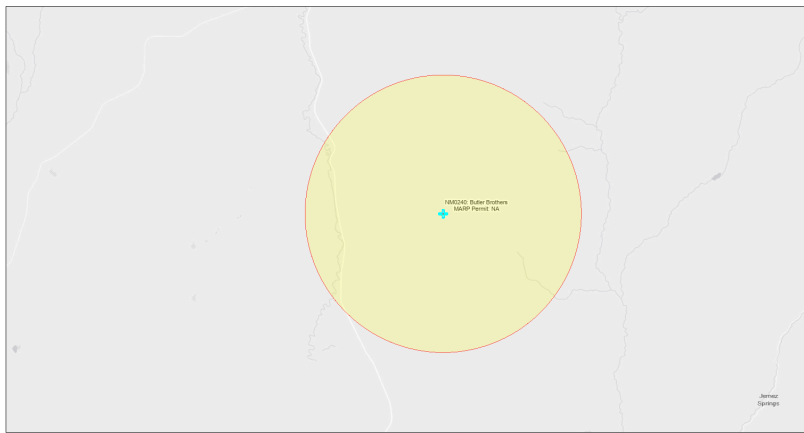


# EJScreen Community Report

This report provides environmental and socioeconomic information for user-defined areas, and combines that data into environmental justice and supplemental indexes.

## Butler Brothers NM0240

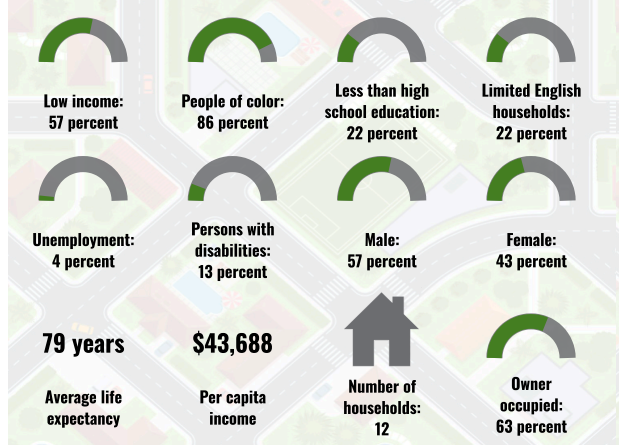
5 miles Ring Centered at 35.863839,-106.902816  
Population: 34  
Area in square miles: 78.53



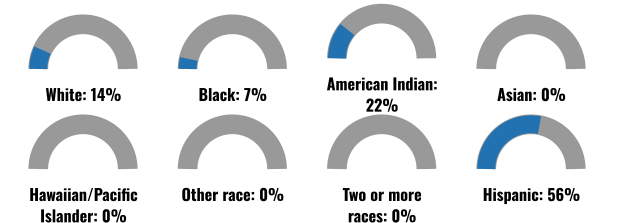
September 25, 2024  
Butler Brothers NM0240  
\* Abandoned Uranium Mines

1:144,448  
0 1.5 3 4.5 6 mi  
0 2.25 4.5 9 km  
Bureau of Land Management, EPA, HHS, Census, USGS, BIA, IHS, New Mexico Energy, Storage and Natural Resources Department, EPA, HHS, IHS

### COMMUNITY INFORMATION



### BREAKDOWN BY RACE



### BREAKDOWN BY AGE



### LIMITED ENGLISH SPEAKING BREAKDOWN



Notes: Numbers may not sum to totals due to rounding. Hispanic population can be of any race. Source: U.S. Census Bureau, American Community Survey (ACS) 2018-2022. Life expectancy data comes from the Centers for Disease Control.

### LANGUAGES SPOKEN AT HOME

LANGUAGE	PERCENT
No language data available.	

Report for 5 miles Ring Centered at 35.863839,-106.902816  
Report produced September 25, 2024 using EJScreen Version 2.3

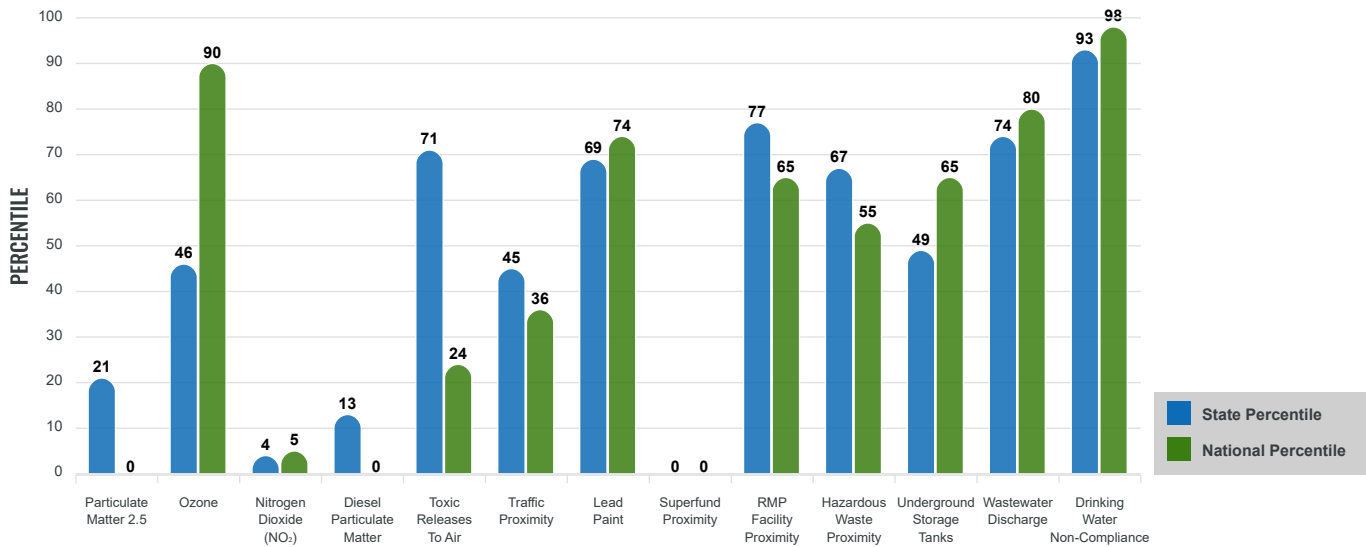
# Environmental Justice & Supplemental Indexes

The environmental justice and supplemental indexes are a combination of environmental and socioeconomic information. There are thirteen EJ indexes and supplemental indexes in EJScreen reflecting the 13 environmental indicators. The indexes for a selected area are compared to those for all other locations in the state or nation. For more information and calculation details on the EJ and supplemental indexes, please visit the [EJScreen website](#).

## EJ INDEXES

The EJ indexes help users screen for potential EJ concerns. To do this, the EJ index combines data on low income and people of color populations with a single environmental indicator.

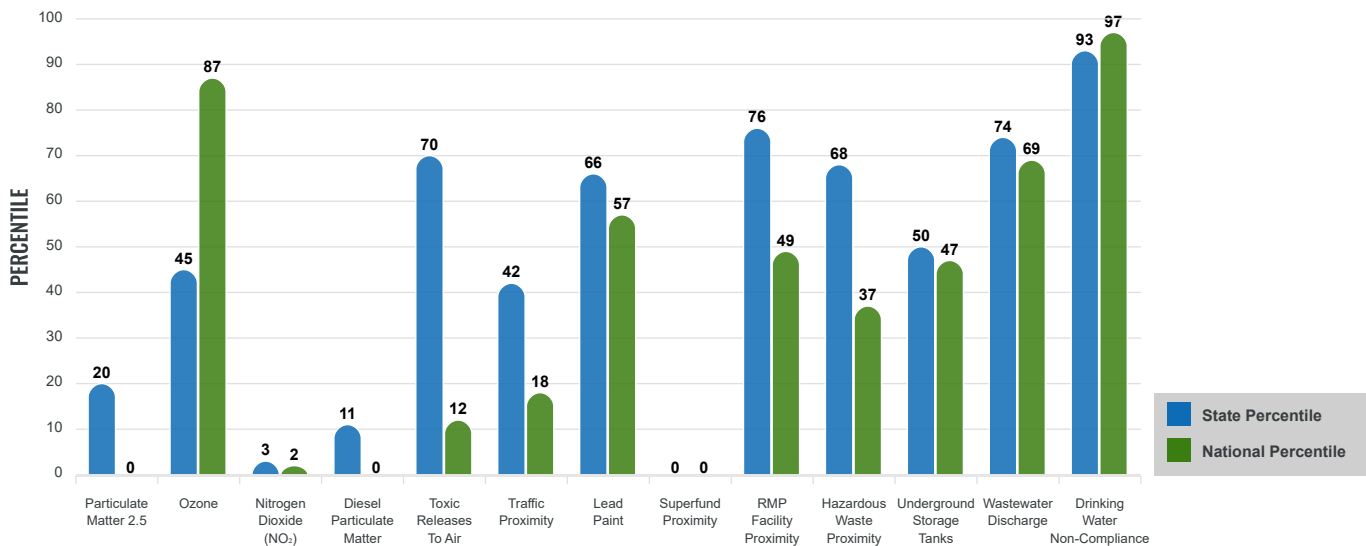
### EJ INDEXES FOR THE SELECTED LOCATION



## SUPPLEMENTAL INDEXES

The supplemental indexes offer a different perspective on community-level vulnerability. They combine data on percent low income, percent persons with disabilities, percent less than high school education, percent limited English speaking, and percent low life expectancy with a single environmental indicator.

### SUPPLEMENTAL INDEXES FOR THE SELECTED LOCATION



Report for 5 miles Ring Centered at 35.863839,-106.902816

Report produced September 25, 2024 using EJScreen Version 2.3

# EJScreen Environmental and Socioeconomic Indicators Data

SELECTED VARIABLES	VALUE	STATE AVERAGE	PERCENTILE IN STATE	USA AVERAGE	PERCENTILE IN USA
<b>ENVIRONMENTAL BURDEN INDICATORS</b>					
Particulate Matter 2.5 (µg/m <sup>3</sup> )	4.83	6.11	12	8.45	0
Ozone (ppb)	63.5	65.3	29	61.8	64
Nitrogen Dioxide (NO <sub>2</sub> ) (ppbv)	1.9	8.1	2	7.8	1
Diesel Particulate Matter (µg/m <sup>3</sup> )	0.0168	0.187	7	0.191	0
Toxic Releases to Air (toxicity-weighted concentration)	4.9	29	47	4,600	7
Traffic Proximity (daily traffic count/distance to road)	47,000	730,000	27	1,700,000	11
Lead Paint (% Pre-1960 Housing)	0.1	0.19	51	0.3	36
Superfund Proximity (site count/km distance)	0	0.34	0	0.39	0
RMP Facility Proximity (facility count/km distance)	0.039	0.2	53	0.57	28
Hazardous Waste Proximity (facility count/km distance)	0.17	1.2	43	3.5	21
Underground Storage Tanks (count/km <sup>2</sup> )	0.0086	2.8	31	3.6	27
Wastewater Discharge (toxicity-weighted concentration/m distance)	27	990000	49	700000	44
Drinking Water Non-Compliance (points)	13	5.6	87	2.2	97
<b>SOCIOECONOMIC INDICATORS</b>					
Demographic Index USA	2.69	N/A	N/A	1.34	91
Supplemental Demographic Index USA	2.35	N/A	N/A	1.64	85
Demographic Index State	3.03	2.16	81	N/A	N/A
Supplemental Demographic Index State	2.14	1.62	78	N/A	N/A
People of Color	86%	62%	79	40%	86
Low Income	57%	39%	76	30%	86
Unemployment Rate	4%	6%	50	6%	55
Limited English Speaking Households	22%	6%	92	5%	94
Less Than High School Education	22%	14%	77	11%	84
Under Age 5	6%	5%	63	5%	58
Over Age 64	13%	20%	34	18%	39

\*Diesel particulate matter index is from the EPA's Air Toxics Data Update, which is the Agency's ongoing, comprehensive evaluation of air toxics in the United States. This effort aims to prioritize air toxics, emission sources, and locations of interest for further study. It is important to remember that the air toxics data presented here provide broad estimates of health risks over geographic areas of the country, not definitive risks to specific individuals or locations. More information on the Air Toxics Data Update can be found at: <https://www.epa.gov/haps/air-toxics-data-update>.

**Sites reporting to EPA within defined area:**

Superfund .....	0
Hazardous Waste, Treatment, Storage, and Disposal Facilities .....	0
Water Dischargers .....	1
Air Pollution .....	1
Brownfields .....	0
Toxic Release Inventory .....	0

**Other community features within defined area:**

Schools .....	0
Hospitals .....	0
Places of Worship .....	0

**Other environmental data:**

Air Non-attainment .....	No
Impaired Waters .....	Yes

Selected location contains American Indian Reservation Lands* .....	Yes
Selected location contains a "Justice40 (CEJST)" disadvantaged community .....	Yes
Selected location contains an EPA IRA disadvantaged community .....	Yes

Report for 5 miles Ring Centered at 35.863839,-106.902816  
 Report produced September 25, 2024 using EJScreen Version 2.3

## EJScreen Environmental and Socioeconomic Indicators Data

### HEALTH INDICATORS

INDICATOR	VALUE	STATE AVERAGE	STATE PERCENTILE	US AVERAGE	US PERCENTILE
Low Life Expectancy	19%	19%	46	20%	47
Heart Disease	9.3	5.9	97	5.8	96
Asthma	12	11.2	82	10.3	89
Cancer	6.8	6.1	72	6.4	56
Persons with Disabilities	13.2%	17.1%	31	13.7%	53

### CLIMATE INDICATORS

INDICATOR	VALUE	STATE AVERAGE	STATE PERCENTILE	US AVERAGE	US PERCENTILE
Flood Risk	7%	9%	56	12%	51
Wildfire Risk	81%	58%	48	14%	89

### CRITICAL SERVICE GAPS

INDICATOR	VALUE	STATE AVERAGE	STATE PERCENTILE	US AVERAGE	US PERCENTILE
Broadband Internet	40%	20%	88	13%	96
Lack of Health Insurance	12%	10%	68	9%	74
Housing Burden	No	N/A	N/A	N/A	N/A
Transportation Access Burden	Yes	N/A	N/A	N/A	N/A
Food Desert	No	N/A	N/A	N/A	N/A

Report for 5 miles Ring Centered at 35.863839,-106.902816

Report produced September 25, 2024 using EJScreen Version 2.3

Location: User-specified point center at 35.863839, -106.902816  
 Ring (buffer): 5-miles radius  
 Description: Butler Brothers NM0240

Summary of ACS Estimates		2018 - 2022
Population		34
Population Density (per sq. mile)		0
People of Color Population		29
% People of Color Population		86%
Households		12
Housing Units		20
Housing Units Built Before 1950		2
Per Capita Income		43,688
Land Area (sq. miles) (Source: SF1)		67.27
% Land Area		100%
Water Area (sq. miles) (Source: SF1)		0.01
% Water Area		0%

	2018 - 2022 ACS Estimates	Percent	MOE (±)
<b>Population by Race</b>			
Total	34	100%	485
Population Reporting One Race	29	87%	831
White	12	35%	233
Black	2	7%	61
American Indian	9	27%	327
Asian	0	0%	97
Pacific Islander	0	0%	13
Some Other Race	6	18%	100
Population Reporting Two or More Races	4	13%	337
Total Hispanic Population	19	56%	254
Total Non-Hispanic Population	15		
White Alone	5	14%	224
Black Alone	2	7%	61
American Indian Alone	8	22%	327
Non-Hispanic Asian Alone	0	0%	97
Pacific Islander Alone	0	0%	13
Other Race Alone	0	0%	13
Two or More Races Alone	0	0%	245
<b>Population by Sex</b>			
Male	19	57%	312
Female	14	43%	299
<b>Population by Age</b>			
Age 0-4	2	6%	84
Age 0-17	7	22%	198
Age 18+	26	78%	282
Age 65+	4	13%	110

**Data Note:** Detail may not sum to totals due to rounding. Hispanic population can be of any race.

N/A means not available. **Source:** U.S. Census Bureau, American Community Survey (ACS) 2018 - 2022

Location: User-specified point center at 35.863839, -106.902816  
 Ring (buffer): 5-miles radius  
 Description: Butler Brothers NM0240

	2018 - 2022 ACS Estimates	Percent	MOE (±)
<b>Population 25+ by Educational Attainment</b>			
Total	23	100%	283
Less than 9th Grade	1	4%	44
9th - 12th Grade, No Diploma	4	18%	86
High School Graduate	9	40%	103
Some College, No Degree	3	15%	113
Associate Degree	2	9%	81
Bachelor's Degree or more	3	14%	229
<b>Population Age 5+ Years by Ability to Speak English</b>			
Total	32	100%	447
Speak only English	19	60%	265
Non-English at Home <sup>1+2+3+4</sup>	13	40%	291
<sup>1</sup> Speak English "very well"	5	16%	115
<sup>2</sup> Speak English "well"	6	19%	270
<sup>3</sup> Speak English "not well"	2	5%	65
<sup>4</sup> Speak English "not at all"	0	0%	45
<sup>3+4</sup> Speak English "less than well"	2	5%	79
<sup>2+3+4</sup> Speak English "less than very well"	8	24%	277
<b>Limited English Speaking Households*</b>			
Total	3	100%	74
Speak Spanish	3	100%	71
Speak Other Indo-European Languages	0	0%	13
Speak Asian-Pacific Island Languages	0	0%	13
Speak Other Languages	0	0%	59
<b>Households by Household Income</b>			
Household Income Base	12	100%	176
< \$15,000	4	34%	83
\$15,000 - \$25,000	1	10%	36
\$25,000 - \$50,000	1	11%	78
\$50,000 - \$75,000	0	3%	29
\$75,000 +	5	42%	190
<b>Occupied Housing Units by Tenure</b>			
Total	12	100%	176
Owner Occupied	7	63%	169
Renter Occupied	4	37%	84
<b>Employed Population Age 16+ Years</b>			
Total	26	100%	345
In Labor Force	12	47%	232
Civilian Unemployed in Labor Force	1	4%	34
Not In Labor Force	14	53%	201

**Data Note:** Detail may not sum to totals due to rounding. Hispanic population can be of anyrace.

N/A means not available. **Source:** U.S. Census Bureau, American Community Survey (ACS)

\*Households in which no one 14 and over speaks English "very well" or speaks English only.

Location: User-specified point center at 35.863839, -106.902816

Ring (buffer): 5-miles radius

Description: Butler Brothers NM0240

	2018 - 2022 ACS Estimates	Percent	MOE (±)
<b>Population by Language Spoken at Home*</b>			
Total (persons age 5 and above)	N/A	N/A	N/A
English	N/A	N/A	N/A
Spanish	N/A	N/A	N/A
French, Haitian, or Cajun	N/A	N/A	N/A
German or other West Germanic	N/A	N/A	N/A
Russian, Polish, or Other Slavic	N/A	N/A	N/A
Other Indo-European	N/A	N/A	N/A
Korean	N/A	N/A	N/A
Chinese (including Mandarin, Cantonese)	N/A	N/A	N/A
Vietnamese	N/A	N/A	N/A
Tagalog (including Filipino)	N/A	N/A	N/A
Other Asian and Pacific Island	N/A	N/A	N/A
Arabic	N/A	N/A	N/A
Other and Unspecified	N/A	N/A	N/A
Total Non-English	N/A	N/A	N/A

**Data Note:** Detail may not sum to totals due to rounding. Hispanic population can be of any race.  
 N/A means not available. **Source:** U.S. Census Bureau, American Community Survey (ACS) 2018 - 2022.  
 \*Population by Language Spoken at Home is available at the census tract summary level and up.