



# EJScreen Community Report

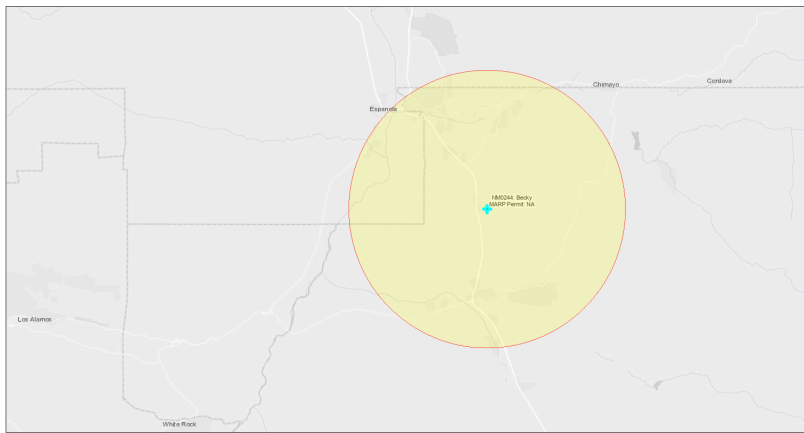
This report provides environmental and socioeconomic information for user-defined areas, and combines that data into environmental justice and supplemental indexes.

## Becky NM0244

5 miles Ring Centered at 35.938426,-106.013506

Population: 18,620

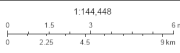
Area in square miles: 78.53



September 25, 2024

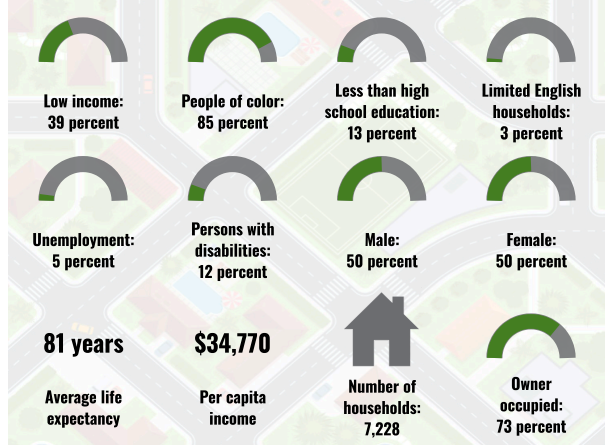
Becky NM0244

\* Abandoned Uranium Mines

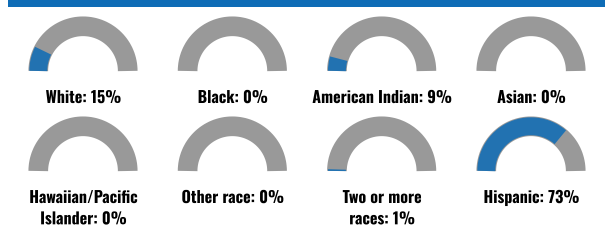


Map: Mexico Energy, Minerals and Natural Resources Department Bureau of Land Management, Texas Parks & Wildlife, Esri, HERE, DeLorme, USGS, EPA, SwRI, Esri, HERE, SwRI

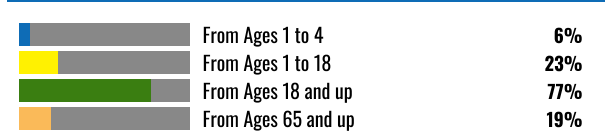
### COMMUNITY INFORMATION



### BREAKDOWN BY RACE



### BREAKDOWN BY AGE



### LIMITED ENGLISH SPEAKING BREAKDOWN



### LANGUAGES SPOKEN AT HOME

LANGUAGE	PERCENT
English	47%
Spanish	47%
Other and Unspecified	6%
Total Non-English	53%

Notes: Numbers may not sum to totals due to rounding. Hispanic population can be of any race. Source: U.S. Census Bureau, American Community Survey (ACS) 2018-2022. Life expectancy data comes from the Centers for Disease Control.

Report for 5 miles Ring Centered at 35.938426,-106.013506

Report produced September 25, 2024 using EJScreen Version 2.3

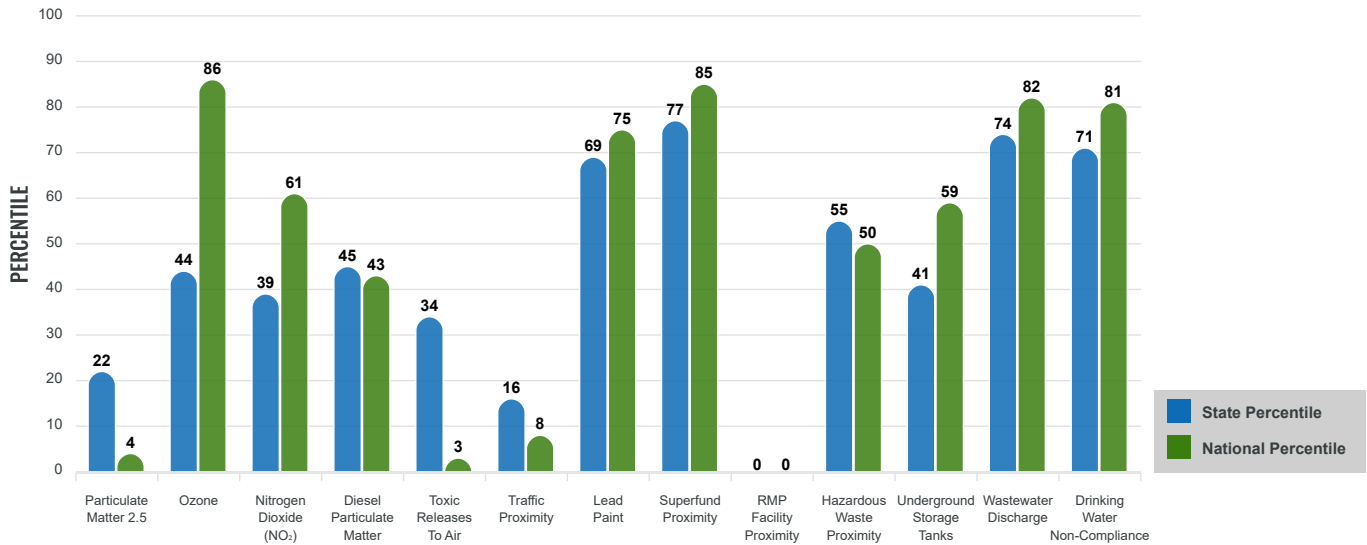
# Environmental Justice & Supplemental Indexes

The environmental justice and supplemental indexes are a combination of environmental and socioeconomic information. There are thirteen EJ indexes and supplemental indexes in EJScreen reflecting the 13 environmental indicators. The indexes for a selected area are compared to those for all other locations in the state or nation. For more information and calculation details on the EJ and supplemental indexes, please visit the [EJScreen website](#).

## EJ INDEXES

The EJ indexes help users screen for potential EJ concerns. To do this, the EJ index combines data on low income and people of color populations with a single environmental indicator.

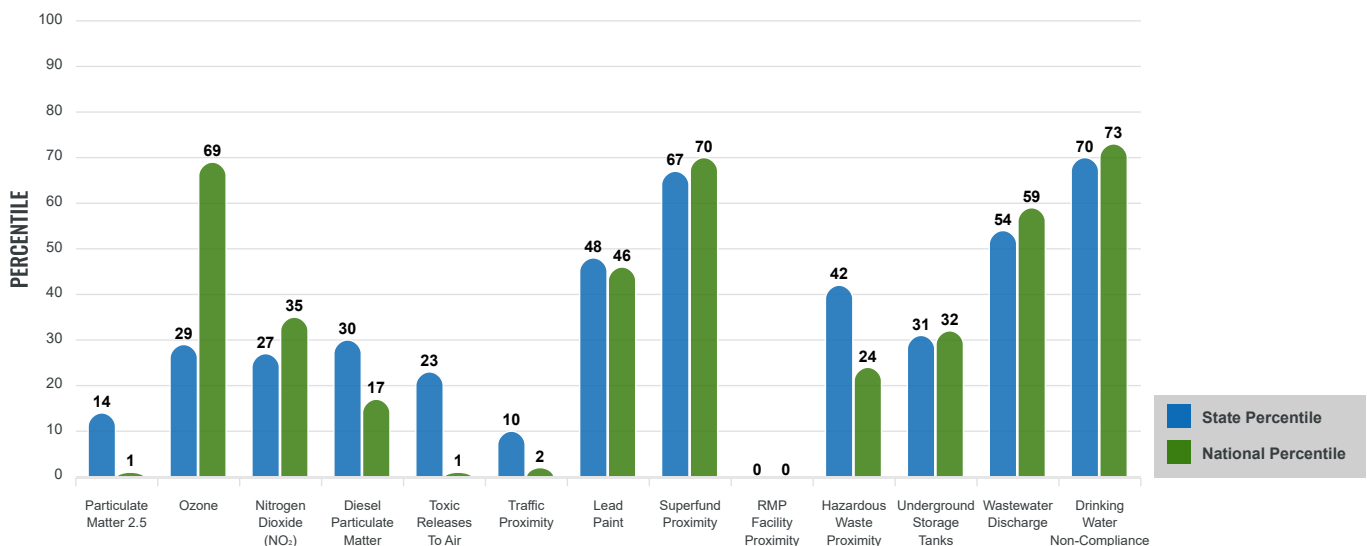
### EJ INDEXES FOR THE SELECTED LOCATION



## SUPPLEMENTAL INDEXES

The supplemental indexes offer a different perspective on community-level vulnerability. They combine data on percent low income, percent persons with disabilities, percent less than high school education, percent limited English speaking, and percent low life expectancy with a single environmental indicator.

### SUPPLEMENTAL INDEXES FOR THE SELECTED LOCATION



Report for 5 miles Ring Centered at 35.938426,-106.013506

Report produced September 25, 2024 using EJScreen Version 2.3

# EJScreen Environmental and Socioeconomic Indicators Data

SELECTED VARIABLES	VALUE	STATE AVERAGE	PERCENTILE IN STATE	USA AVERAGE	PERCENTILE IN USA
<b>ENVIRONMENTAL BURDEN INDICATORS</b>					
Particulate Matter 2.5 (µg/m <sup>3</sup> )	4.94	6.11	14	8.45	1
Ozone (ppb)	63.9	65.3	32	61.8	66
Nitrogen Dioxide (NO <sub>2</sub> ) (ppbv)	5.6	8.1	27	7.8	29
Diesel Particulate Matter (µg/m <sup>3</sup> )	0.0675	0.187	34	0.191	15
Toxic Releases to Air (toxicity-weighted concentration)	0.007	29	23	4,600	1
Traffic Proximity (daily traffic count/distance to road)	5,800	730,000	13	1,700,000	3
Lead Paint (% Pre-1960 Housing)	0.18	0.19	62	0.3	46
Superfund Proximity (site count/km distance)	0.3	0.34	77	0.39	76
RMP Facility Proximity (facility count/km distance)	0	0.2	0	0.57	0
Hazardous Waste Proximity (facility count/km distance)	0.24	1.2	45	3.5	25
Underground Storage Tanks (count/km <sup>2</sup> )	1.7	2.8	63	3.6	60
Wastewater Discharge (toxicity-weighted concentration/m distance)	260	990000	63	700000	63
Drinking Water Non-Compliance (points)	3.5	5.6	84	2.2	89
<b>SOCIOECONOMIC INDICATORS</b>					
Demographic Index USA	2.26	N/A	N/A	1.34	83
Supplemental Demographic Index USA	1.5	N/A	N/A	1.64	47
Demographic Index State	2.62	2.16	66	N/A	N/A
Supplemental Demographic Index State	1.24	1.62	30	N/A	N/A
People of Color	85%	62%	77	40%	85
Low Income	39%	39%	51	30%	69
Unemployment Rate	5%	6%	56	6%	62
Limited English Speaking Households	3%	6%	56	5%	68
Less Than High School Education	13%	14%	58	11%	66
Under Age 5	6%	5%	64	5%	59
Over Age 64	19%	20%	57	18%	63

\*Diesel particulate matter index is from the EPA's Air Toxics Data Update, which is the Agency's ongoing, comprehensive evaluation of air toxics in the United States. This effort aims to prioritize air toxics, emission sources, and locations of interest for further study. It is important to remember that the air toxics data presented here provide broad estimates of health risks over geographic areas of the country, not definitive risks to specific individuals or locations. More information on the Air Toxics Data Update can be found at: <https://www.epa.gov/haps/air-toxics-data-update>.

**Sites reporting to EPA within defined area:**

Superfund .....	0
Hazardous Waste, Treatment, Storage, and Disposal Facilities .....	0
Water Dischargers .....	33
Air Pollution .....	12
Brownfields .....	4
Toxic Release Inventory .....	0

**Other community features within defined area:**

Schools .....	5
Hospitals .....	0
Places of Worship .....	11

**Other environmental data:**

Air Non-attainment .....	No
Impaired Waters .....	Yes

Selected location contains American Indian Reservation Lands* .....	Yes
Selected location contains a "Justice40 (CEJST)" disadvantaged community .....	Yes
Selected location contains an EPA IRA disadvantaged community .....	Yes

Report for 5 miles Ring Centered at 35.938426,-106.013506  
 Report produced September 25, 2024 using EJScreen Version 2.3

## EJScreen Environmental and Socioeconomic Indicators Data

### HEALTH INDICATORS

INDICATOR	VALUE	STATE AVERAGE	STATE PERCENTILE	US AVERAGE	US PERCENTILE
Low Life Expectancy	16%	19%	20	20%	20
Heart Disease	6	5.9	53	5.8	58
Asthma	10.6	11.2	35	10.3	61
Cancer	5.6	6.1	41	6.4	33
Persons with Disabilities	12.2%	17.1%	24	13.7%	46

### CLIMATE INDICATORS

INDICATOR	VALUE	STATE AVERAGE	STATE PERCENTILE	US AVERAGE	US PERCENTILE
Flood Risk	10%	9%	67	12%	64
Wildfire Risk	92%	58%	57	14%	91

### CRITICAL SERVICE GAPS

INDICATOR	VALUE	STATE AVERAGE	STATE PERCENTILE	US AVERAGE	US PERCENTILE
Broadband Internet	29%	20%	74	13%	89
Lack of Health Insurance	11%	10%	66	9%	73
Housing Burden	No	N/A	N/A	N/A	N/A
Transportation Access Burden	Yes	N/A	N/A	N/A	N/A
Food Desert	Yes	N/A	N/A	N/A	N/A

Report for 5 miles Ring Centered at 35.938426,-106.013506

Report produced September 25, 2024 using EJScreen Version 2.3

Location: User-specified point center at 35.938426, -106.013506  
 Ring (buffer): 5-miles radius  
 Description: Becky NM0244

Summary of ACS Estimates		2018 - 2022
Population		18,620
Population Density (per sq. mile)		237
People of Color Population		15,737
% People of Color Population		85%
Households		7,228
Housing Units		8,707
Housing Units Built Before 1950		892
Per Capita Income		34,770
Land Area (sq. miles) (Source: SF1)		78.52
% Land Area		100%
Water Area (sq. miles) (Source: SF1)		0.16
% Water Area		0%

	2018 - 2022 ACS Estimates	Percent	MOE (±)
<b>Population by Race</b>			
Total	18,620	100%	695
Population Reporting One Race	15,767	85%	1,605
White	7,358	40%	484
Black	129	1%	106
American Indian	2,017	11%	310
Asian	64	0%	24
Pacific Islander	1	0%	15
Some Other Race	6,197	33%	666
Population Reporting Two or More Races	2,853	15%	307
Total Hispanic Population	13,633	73%	708
Total Non-Hispanic Population	4,988		
White Alone	2,884	15%	306
Black Alone	40	0%	89
American Indian Alone	1,695	9%	305
Non-Hispanic Asian Alone	58	0%	23
Pacific Islander Alone	1	0%	15
Other Race Alone	91	0%	146
Two or More Races Alone	218	1%	83
<b>Population by Sex</b>			
Male	9,244	50%	415
Female	9,376	50%	435
<b>Population by Age</b>			
Age 0-4	1,061	6%	238
Age 0-17	4,352	23%	274
Age 18+	14,269	77%	443
Age 65+	3,606	19%	245

**Data Note:** Detail may not sum to totals due to rounding. Hispanic population can be of any race.

N/A means not available. **Source:** U.S. Census Bureau, American Community Survey (ACS) 2018 - 2022

Location: User-specified point center at 35.938426, -106.013506  
 Ring (buffer): 5-miles radius  
 Description: Becky NM0244

	2018 - 2022 ACS Estimates	Percent	MOE (±)
<b>Population 25+ by Educational Attainment</b>			
Total	12,608	100%	497
Less than 9th Grade	780	6%	236
9th - 12th Grade, No Diploma	800	6%	121
High School Graduate	3,974	32%	245
Some College, No Degree	3,143	25%	289
Associate Degree	869	7%	202
Bachelor's Degree or more	3,041	24%	185
<b>Population Age 5+ Years by Ability to Speak English</b>			
Total	17,560	100%	695
Speak only English	8,394	48%	296
Non-English at Home <sup>1+2+3+4</sup>	9,166	52%	553
<sup>1</sup> Speak English "very well"	8,064	46%	501
<sup>2</sup> Speak English "well"	653	4%	102
<sup>3</sup> Speak English "not well"	330	2%	167
<sup>4</sup> Speak English "not at all"	118	1%	54
<sup>3+4</sup> Speak English "less than well"	448	3%	173
<sup>2+3+4</sup> Speak English "less than very well"	1,101	6%	201
<b>Limited English Speaking Households*</b>			
Total	210	100%	66
Speak Spanish	199	95%	63
Speak Other Indo-European Languages	3	2%	13
Speak Asian-Pacific Island Languages	0	0%	13
Speak Other Languages	8	4%	13
<b>Households by Household Income</b>			
Household Income Base	7,228	100%	314
< \$15,000	1,065	15%	153
\$15,000 - \$25,000	656	9%	205
\$25,000 - \$50,000	1,555	22%	144
\$50,000 - \$75,000	1,347	19%	188
\$75,000 +	2,606	36%	190
<b>Occupied Housing Units by Tenure</b>			
Total	7,228	100%	314
Owner Occupied	5,305	73%	289
Renter Occupied	1,923	27%	147
<b>Employed Population Age 16+ Years</b>			
Total	14,784	100%	648
In Labor Force	8,088	55%	414
Civilian Unemployed in Labor Force	434	5%	116
Not In Labor Force	6,696	45%	491

**Data Note:** Detail may not sum to totals due to rounding. Hispanic population can be of anyrace.

N/A means not available. **Source:** U.S. Census Bureau, American Community Survey (ACS)

\*Households in which no one 14 and over speaks English "very well" or speaks English only.

Location: User-specified point center at 35.938426, -106.013506

Ring (buffer): 5-miles radius

Description: Becky NM0244

	2018 - 2022 ACS Estimates	Percent	MOE (±)
<b>Population by Language Spoken at Home*</b>			
Total (persons age 5 and above)	13,096	100%	798
English	6,103	47%	515
Spanish	6,172	47%	749
French, Haitian, or Cajun	5	0%	19
German or other West Germanic	28	0%	22
Russian, Polish, or Other Slavic	5	0%	19
Other Indo-European	10	0%	19
Korean	0	0%	19
Chinese (including Mandarin, Cantonese)	10	0%	19
Vietnamese	0	0%	19
Tagalog (including Filipino)	24	0%	25
Other Asian and Pacific Island	0	0%	19
Arabic	0	0%	19
Other and Unspecified	739	6%	191
Total Non-English	6,993	53%	950

**Data Note:** Detail may not sum to totals due to rounding. Hispanic population can be of any race.  
N/A means not available. **Source:** U.S. Census Bureau, American Community Survey (ACS) 2018 - 2022.  
\*Population by Language Spoken at Home is available at the census tract summary level and up.