



EJScreen Community Report

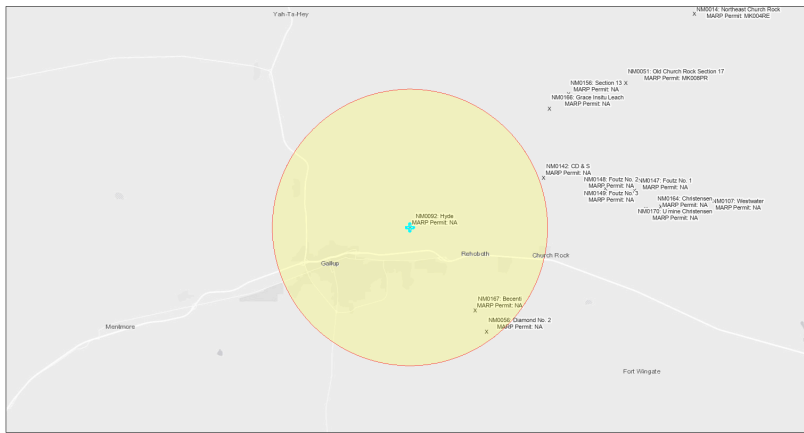
This report provides environmental and socioeconomic information for user-defined areas, and combines that data into environmental justice and supplemental indexes.

Hyde NM0092

5 miles Ring Centered at 35.546424,-108.691985

Population: 23,157

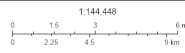
Area in square miles: 78.53



September 20, 2024

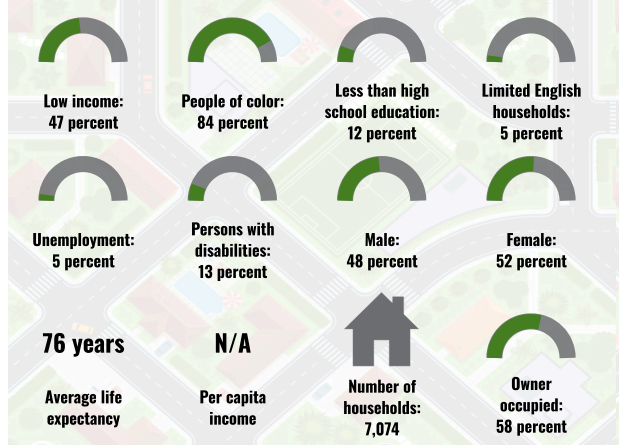
Hyde NM0092

* Abandoned Uranium Mines

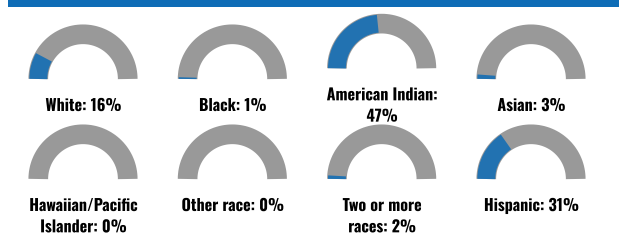


Bureau of Land Management, EPA, HHS, Census, USGS, EPA, USF, New Mexico Energy, Storage and Natural Resources Department, EIS, HHS, USF

COMMUNITY INFORMATION



BREAKDOWN BY RACE



BREAKDOWN BY AGE



LIMITED ENGLISH SPEAKING BREAKDOWN



LANGUAGES SPOKEN AT HOME

| LANGUAGE | PERCENT |
|------------------------------|---------|
| English | 64% |
| Spanish | 11% |
| Other Indo-European | 1% |
| Tagalog (including Filipino) | 2% |
| Other and Unspecified | 21% |
| Total Non-English | 36% |

Notes: Numbers may not sum to totals due to rounding. Hispanic population can be of any race. Source: U.S. Census Bureau, American Community Survey (ACS) 2018-2022. Life expectancy data comes from the Centers for Disease Control.

Report for 5 miles Ring Centered at 35.546424,-108.691985

Report produced September 20, 2024 using EJScreen Version 2.3

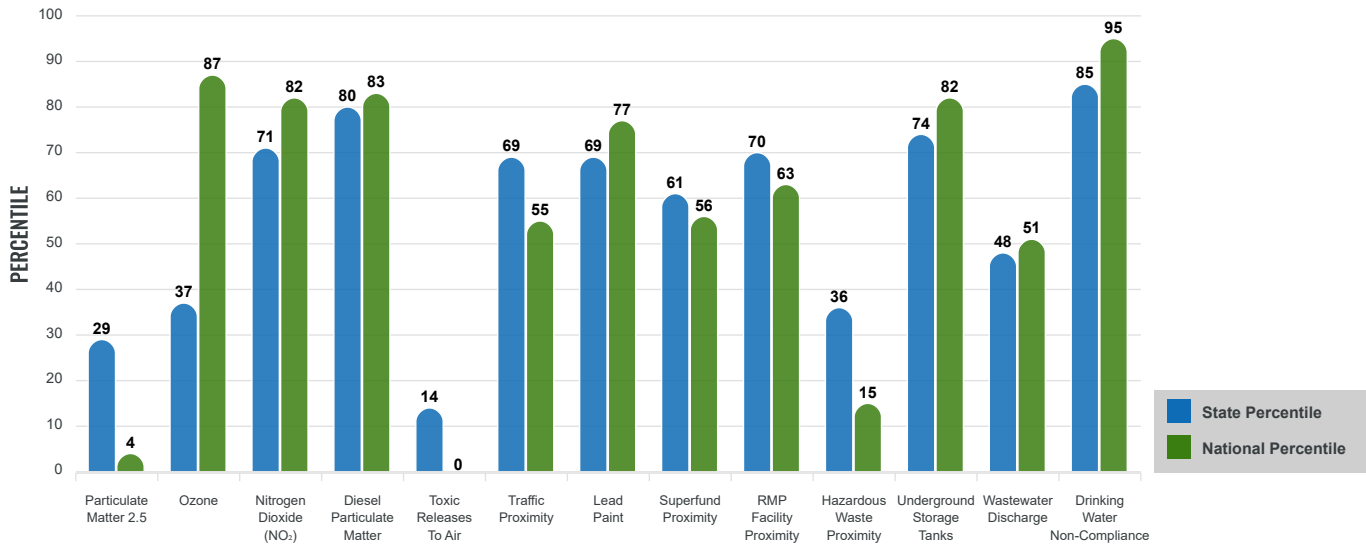
Environmental Justice & Supplemental Indexes

The environmental justice and supplemental indexes are a combination of environmental and socioeconomic information. There are thirteen EJ indexes and supplemental indexes in EJScreen reflecting the 13 environmental indicators. The indexes for a selected area are compared to those for all other locations in the state or nation. For more information and calculation details on the EJ and supplemental indexes, please visit the [EJScreen website](#).

EJ INDEXES

The EJ indexes help users screen for potential EJ concerns. To do this, the EJ index combines data on low income and people of color populations with a single environmental indicator.

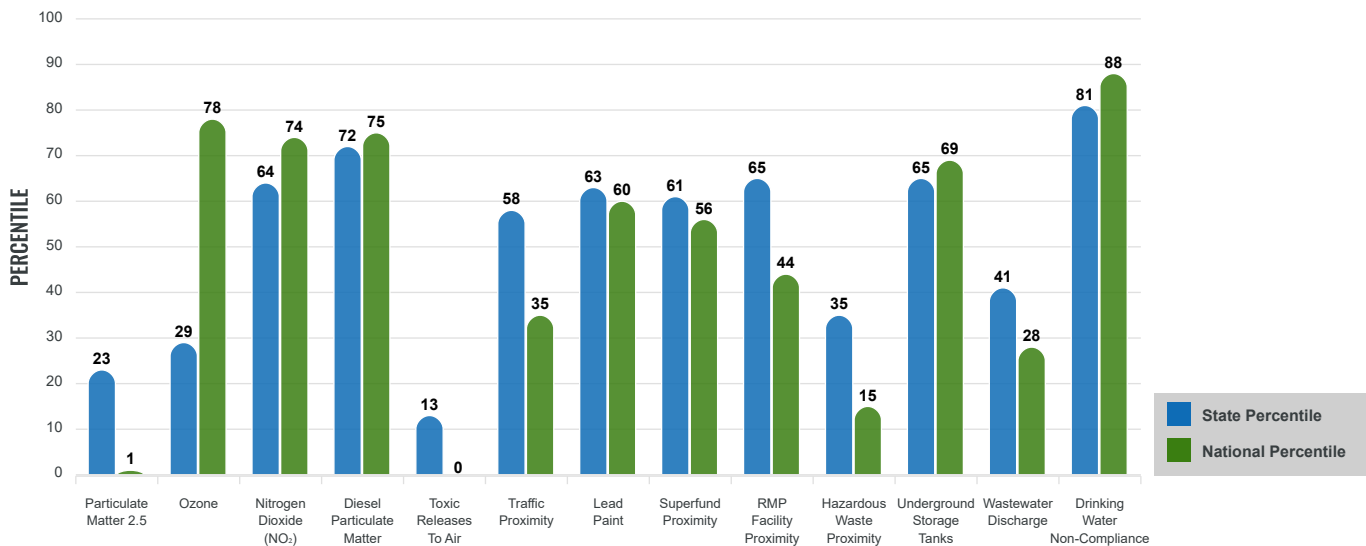
EJ INDEXES FOR THE SELECTED LOCATION



SUPPLEMENTAL INDEXES

The supplemental indexes offer a different perspective on community-level vulnerability. They combine data on percent low income, percent persons with disabilities, percent less than high school education, percent limited English speaking, and percent low life expectancy with a single environmental indicator.

SUPPLEMENTAL INDEXES FOR THE SELECTED LOCATION



Report for 5 miles Ring Centered at 35.546424,-108.691985

Report produced September 20, 2024 using EJScreen Version 2.3

EJScreen Environmental and Socioeconomic Indicators Data

| SELECTED VARIABLES | VALUE | STATE AVERAGE | PERCENTILE IN STATE | USA AVERAGE | PERCENTILE IN USA |
|---|---------|---------------|---------------------|-------------|-------------------|
| ENVIRONMENTAL BURDEN INDICATORS | | | | | |
| Particulate Matter 2.5 (µg/m ³) | 5.04 | 6.11 | 17 | 8.45 | 1 |
| Ozone (ppb) | 63.3 | 65.3 | 24 | 61.8 | 64 |
| Nitrogen Dioxide (NO ₂) (ppbv) | 8.7 | 8.1 | 50 | 7.8 | 62 |
| Diesel Particulate Matter (µg/m ³) | 0.196 | 0.187 | 65 | 0.191 | 63 |
| Toxic Releases to Air (toxicity-weighted concentration) | 0 | 29 | 13 | 4,600 | 0 |
| Traffic Proximity (daily traffic count/distance to road) | 200,000 | 730,000 | 49 | 1,700,000 | 25 |
| Lead Paint (% Pre-1960 Housing) | 0.23 | 0.19 | 68 | 0.3 | 52 |
| Superfund Proximity (site count/km distance) | 0.0041 | 0.34 | 61 | 0.39 | 56 |
| RMP Facility Proximity (facility count/km distance) | 0.11 | 0.2 | 60 | 0.57 | 34 |
| Hazardous Waste Proximity (facility count/km distance) | 0.00029 | 1.2 | 35 | 3.5 | 15 |
| Underground Storage Tanks (count/km ²) | 3.9 | 2.8 | 78 | 3.6 | 74 |
| Wastewater Discharge (toxicity-weighted concentration/m distance) | 2.4 | 990000 | 42 | 700000 | 26 |
| Drinking Water Non-Compliance (points) | 0.99 | 5.6 | 75 | 2.2 | 77 |
| SOCIOECONOMIC INDICATORS | | | | | |
| Demographic Index USA | 2.42 | N/A | N/A | 1.34 | 86 |
| Supplemental Demographic Index USA | 1.87 | N/A | N/A | 1.64 | 68 |
| Demographic Index State | 2.76 | 2.16 | 72 | N/A | N/A |
| Supplemental Demographic Index State | 1.64 | 1.62 | 54 | N/A | N/A |
| People of Color | 84% | 62% | 77 | 40% | 85 |
| Low Income | 47% | 39% | 63 | 30% | 78 |
| Unemployment Rate | 5% | 6% | 55 | 6% | 60 |
| Limited English Speaking Households | 5% | 6% | 65 | 5% | 75 |
| Less Than High School Education | 12% | 14% | 54 | 11% | 63 |
| Under Age 5 | 6% | 5% | 69 | 5% | 66 |
| Over Age 64 | 13% | 20% | 34 | 18% | 39 |

*Diesel particulate matter index is from the EPA's Air Toxics Data Update, which is the Agency's ongoing, comprehensive evaluation of air toxics in the United States. This effort aims to prioritize air toxics, emission sources, and locations of interest for further study. It is important to remember that the air toxics data presented here provide broad estimates of health risks over geographic areas of the country, not definitive risks to specific individuals or locations. More information on the Air Toxics Data Update can be found at: <https://www.epa.gov/haps/air-toxics-data-update>.

Sites reporting to EPA within defined area:

| | |
|--|----|
| Superfund | 0 |
| Hazardous Waste, Treatment, Storage, and Disposal Facilities | 0 |
| Water Dischargers | 81 |
| Air Pollution | 30 |
| Brownfields | 10 |
| Toxic Release Inventory | 0 |

Other community features within defined area:

| | |
|-------------------------|----|
| Schools | 14 |
| Hospitals | 2 |
| Places of Worship | 37 |

Other environmental data:

| | |
|--------------------------|-----|
| Air Non-attainment | No |
| Impaired Waters | Yes |

- Selected location contains American Indian Reservation Lands* Yes
- Selected location contains a "Justice40 (CEJST)" disadvantaged community Yes
- Selected location contains an EPA IRA disadvantaged community Yes

Report for 5 miles Ring Centered at 35.546424,-108.691985
 Report produced September 20, 2024 using EJScreen Version 2.3

EJScreen Environmental and Socioeconomic Indicators Data

HEALTH INDICATORS

| INDICATOR | VALUE | STATE AVERAGE | STATE PERCENTILE | US AVERAGE | US PERCENTILE |
|---------------------------|-------|---------------|------------------|------------|---------------|
| Low Life Expectancy | 21% | 19% | 70 | 20% | 69 |
| Heart Disease | 6.4 | 5.9 | 65 | 5.8 | 66 |
| Asthma | 12.6 | 11.2 | 88 | 10.3 | 92 |
| Cancer | 5.4 | 6.1 | 32 | 6.4 | 27 |
| Persons with Disabilities | 13.1% | 17.1% | 30 | 13.7% | 52 |

CLIMATE INDICATORS

| INDICATOR | VALUE | STATE AVERAGE | STATE PERCENTILE | US AVERAGE | US PERCENTILE |
|---------------|-------|---------------|------------------|------------|---------------|
| Flood Risk | 9% | 9% | 66 | 12% | 63 |
| Wildfire Risk | 0% | 58% | 28 | 14% | 77 |

CRITICAL SERVICE GAPS

| INDICATOR | VALUE | STATE AVERAGE | STATE PERCENTILE | US AVERAGE | US PERCENTILE |
|------------------------------|-------|---------------|------------------|------------|---------------|
| Broadband Internet | 26% | 20% | 69 | 13% | 86 |
| Lack of Health Insurance | 15% | 10% | 83 | 9% | 85 |
| Housing Burden | No | N/A | N/A | N/A | N/A |
| Transportation Access Burden | Yes | N/A | N/A | N/A | N/A |
| Food Desert | Yes | N/A | N/A | N/A | N/A |

Report for 5 miles Ring Centered at 35.546424,-108.691985

Report produced September 20, 2024 using EJScreen Version 2.3

Location: User-specified point center at 35.546424, -108.691985
 Ring (buffer): 5-miles radius
 Description: Hyde NM0092

| Summary of ACS Estimates | | 2018 - 2022 |
|--------------------------------------|--|-------------|
| Population | | 23,157 |
| Population Density (per sq. mile) | | 295 |
| People of Color Population | | 19,380 |
| % People of Color Population | | 84% |
| Households | | 7,074 |
| Housing Units | | 7,750 |
| Housing Units Built Before 1950 | | 960 |
| Per Capita Income | | N/A |
| Land Area (sq. miles) (Source: SF1) | | 78.42 |
| % Land Area | | 100% |
| Water Area (sq. miles) (Source: SF1) | | 0.02 |
| % Water Area | | 0% |

| | 2018 - 2022 ACS Estimates | Percent | MOE (±) |
|--|------------------------------|---------|---------|
| Population by Race | | | |
| Total | 23,157 | 100% | 1,083 |
| Population Reporting One Race | 20,965 | 91% | 2,006 |
| White | 5,055 | 22% | 301 |
| Black | 313 | 1% | 98 |
| American Indian | 11,878 | 51% | 929 |
| Asian | 707 | 3% | 188 |
| Pacific Islander | 41 | 0% | 30 |
| Some Other Race | 2,972 | 13% | 460 |
| Population Reporting Two or More Races | 2,192 | 9% | 601 |
| Total Hispanic Population | 7,080 | 31% | 719 |
| Total Non-Hispanic Population | 16,078 | | |
| White Alone | 3,778 | 16% | 270 |
| Black Alone | 313 | 1% | 98 |
| American Indian Alone | 10,792 | 47% | 774 |
| Non-Hispanic Asian Alone | 704 | 3% | 188 |
| Pacific Islander Alone | 41 | 0% | 30 |
| Other Race Alone | 17 | 0% | 28 |
| Two or More Races Alone | 434 | 2% | 601 |
| Population by Sex | | | |
| Male | 11,207 | 48% | 550 |
| Female | 11,951 | 52% | 685 |
| Population by Age | | | |
| Age 0-4 | 1,489 | 6% | 235 |
| Age 0-17 | 7,227 | 31% | 448 |
| Age 18+ | 15,930 | 69% | 382 |
| Age 65+ | 3,119 | 13% | 155 |

Data Note: Detail may not sum to totals due to rounding. Hispanic population can be of any race.

N/A means not available. **Source:** U.S. Census Bureau, American Community Survey (ACS) 2018 - 2022

Location: User-specified point center at 35.546424, -108.691985
 Ring (buffer): 5-miles radius
 Description: Hyde NM0092

| | 2018 - 2022 ACS Estimates | Percent | MOE (±) |
|--|------------------------------|---------|---------|
| Population 25+ by Educational Attainment | | | |
| Total | 14,153 | 100% | 492 |
| Less than 9th Grade | 614 | 4% | 123 |
| 9th - 12th Grade, No Diploma | 1,015 | 7% | 147 |
| High School Graduate | 4,848 | 34% | 297 |
| Some College, No Degree | 3,673 | 26% | 242 |
| Associate Degree | 1,135 | 8% | 121 |
| Bachelor's Degree or more | 2,869 | 20% | 217 |
| Population Age 5+ Years by Ability to Speak English | | | |
| Total | 21,669 | 100% | 990 |
| Speak only English | 13,223 | 61% | 527 |
| Non-English at Home ¹⁺²⁺³⁺⁴ | 8,445 | 39% | 673 |
| ¹ Speak English "very well" | 6,898 | 32% | 686 |
| ² Speak English "well" | 1,014 | 5% | 155 |
| ³ Speak English "not well" | 450 | 2% | 152 |
| ⁴ Speak English "not at all" | 83 | 0% | 65 |
| ³⁺⁴ Speak English "less than well" | 533 | 2% | 159 |
| ²⁺³⁺⁴ Speak English "less than very well" | 1,547 | 7% | 177 |
| Limited English Speaking Households* | | | |
| Total | 354 | 100% | 88 |
| Speak Spanish | 201 | 57% | 83 |
| Speak Other Indo-European Languages | 10 | 3% | 18 |
| Speak Asian-Pacific Island Languages | 31 | 9% | 24 |
| Speak Other Languages | 113 | 32% | 58 |
| Households by Household Income | | | |
| Household Income Base | 7,074 | 100% | 242 |
| < \$15,000 | 1,262 | 18% | 189 |
| \$15,000 - \$25,000 | 484 | 7% | 95 |
| \$25,000 - \$50,000 | 1,211 | 17% | 101 |
| \$50,000 - \$75,000 | 1,478 | 21% | 211 |
| \$75,000 + | 2,639 | 37% | 139 |
| Occupied Housing Units by Tenure | | | |
| Total | 7,074 | 100% | 242 |
| Owner Occupied | 4,137 | 58% | 146 |
| Renter Occupied | 2,937 | 42% | 217 |
| Employed Population Age 16+ Years | | | |
| Total | 16,841 | 100% | 543 |
| In Labor Force | 9,172 | 54% | 339 |
| Civilian Unemployed in Labor Force | 435 | 5% | 125 |
| Not In Labor Force | 7,669 | 46% | 397 |

Data Note: Detail may not sum to totals due to rounding. Hispanic population can be of anyrace.

N/A means not available. **Source:** U.S. Census Bureau, American Community Survey (ACS)

*Households in which no one 14 and over speaks English "very well" or speaks English only.

Location: User-specified point center at 35.546424, -108.691985

Ring (buffer): 5-miles radius

Description: Hyde NM0092

| | 2018 - 2022 ACS Estimates | Percent | MOE (±) |
|---|------------------------------|---------|---------|
| Population by Language Spoken at Home* | | | |
| Total (persons age 5 and above) | 20,202 | 100% | 1,123 |
| English | 12,966 | 64% | 718 |
| Spanish | 2,290 | 11% | 483 |
| French, Haitian, or Cajun | 3 | 0% | 13 |
| German or other West Germanic | 33 | 0% | 40 |
| Russian, Polish, or Other Slavic | 14 | 0% | 18 |
| Other Indo-European | 209 | 1% | 191 |
| Korean | 0 | 0% | 13 |
| Chinese (including Mandarin, Cantonese) | 0 | 0% | 13 |
| Vietnamese | 13 | 0% | 23 |
| Tagalog (including Filipino) | 399 | 2% | 150 |
| Other Asian and Pacific Island | 5 | 0% | 17 |
| Arabic | 62 | 0% | 112 |
| Other and Unspecified | 4,208 | 21% | 716 |
| Total Non-English | 7,237 | 36% | 1,333 |

Data Note: Detail may not sum to totals due to rounding. Hispanic population can be of any race.
N/A means not available. **Source:** U.S. Census Bureau, American Community Survey (ACS) 2018 - 2022.
*Population by Language Spoken at Home is available at the census tract summary level and up.