

ABANDONED OR INACTIVE URANIUM
MINES IN NEW MEXICO

A report of investigation carried out
between August 1979 and May 1980 under
contract with the New Mexico Energy and
Minerals Department.

by

Orin J. Anderson

New Mexico Bureau of Mines and
Mineral Resources
Open-File Report 148

INTRODUCTION

During the course of this investigation approximately 200 uranium mine sites were visited. Although these sites are distributed throughout 20 counties the majority are in McKinley, San Juan, and Valencia Counties, along the western and southern margin of the San Juan Basin. Other counties with an appreciable number of sites are Grant, Rio Arriba, Sandoval, Sierra, and Socorro.

Field work commenced in August, 1979 and extended although not continuously, into May, 1980. Information obtained during the on-site visits included location, type and size of mine, condition of mine, host formation, dimensions of remaining structures, proximity to residences or villages, water quality data, and radiation levels, although a gamma ray scintillometer was not obtained for the project until October 20, 1979. An effort was made to contact landowners whenever and wherever possible, however, no systematic attempt was made to determine land and mineral ownership during this phase of the investigation.

Mine operation data has been included where available. This consists of information on ore grades, production history mineralogy, and mine operator. Old publications of the U.S. AEC and the State Mine Inspectors office were helpful in this area.

The mine reports are arranged alphabetically by county with each county having its own index. A NM- or AZ-mine identification number is given with each mine name in the index. It is an AML numbering system devised by Don Baker, Jr. The first part of this

identification number is based on a U.S. Soil Conservation Service numbering system of 15' quadrangles beginning with 1 in the northwest corner of the state to 24 in the northeast corner, then returning to the western border to start a new tier. The second part refers to a 7½' quad within the 15' quad; these are numbered counterclockwise from 1 in the NE quadrant to 4 in the SE. The last part of the number refers to a particular mine within the 7½' quad. An AZ- prefix indicates the 15' quadrangle is an Arizona quad that overlaps the New Mexico state boundary.

Acknowledgments - The writer wishes to thank the following people for their valuable assistance in the field: Lars (Skip) Skotte, Richard Chamberlin, JoAnne Osburn, Mary Ann Anderson, and Cheryl Kyllonen.

A special thanks is extended to Mr. William Chenoweth of the U.S. Department of Energy, both for his time in the field as well as the claim maps and A.E.C. mine production records he provided. Mr. John Blagbrough provided helpful information about the Chuska district. The editorial assistance of Wyatt Brewster and Lars (Skip) Skotte is gratefully acknowledged.

The help and cooperation of the Navajo Tribe Office in Window Rock, Arizona permitted a statewide investigation to be completed; a note of thanks goes to Mr. R. Zaman and Mr. William Armstrong of that office.

Quad: Bread Springs 7½'

1. NM-146-2-1 Page 33
Diamond 2 (Largo)

Quad: Church Rock 7½'

1. NM-122-4-1 Page 39
CD & S (Sec. 35)
2. NM-122-4-2 Page 41
Foutz #3 (Yellow Jacket)
3. NM-122-4-3 Page 45.
Foutz 1 and 2
4. NM-122-4-4 Page 48
William and Reynolds
5. NM-122-4-5 Page 50
Christenson (Rimrock #2)
6. NM-122-4-6 Page 58
Santa Fe Christensen (Rimrock #1)

Quad: Dos Lomas 7½'

1. NM-149-4-1 Page 62
Isabella
2. NM-149-4-2 Page 67
Spencer Shaft (Centennial)
3. NM-149-4-3 Page 69
Hogan
4. NM-149-4-4 Page 74
Gossett Incline (Beacon Hill #23)

Date Visited 12/4/79

Mine name(s) Foutz #3 (Yellow Jacket) County McKinley

Section SE $\frac{1}{4}$, SE $\frac{1}{4}$ 31 Twنش. 16 N R. 16 W

Quadrangle Sheet Church Rock 7 $\frac{1}{2}$ '

Mining district Church Rock

Elevation 7,200'

Nearest City and/or dwelling Springstead Trading Post, 1 $\frac{1}{4}$ mi. NW. Numerous single family dwellings within 2 mi. radius of mine.

The Foutz #3 is located approximately 2 $\frac{1}{4}$ air miles NE of Church Rock (Red Rock State Park area). Mine is accessible by dirt road leaving the Church Rock highway about 3 mi. north of Church Rock and traveling east for 1 mi. Take turn off on another dirt road to right (south) for 1 mi. to mine site.

The mine consists of 4 interconnected adits driven into a 25' sandstone of the Brushy Basin member of the Morrison fm.; 3 are driven southwestward and 1 eastward. The easternmost adit, photo (a), has an 8' x 8' portal that leads southward into fairly extensive workings. An open stope area lies off to the left about 15' into the mine. The area is up to 50' across with a raise and 2 drifts begun at the southern end. Several places along the face just inside the adit produce maximum deflection on the scintillometer (10,000 cps).

The middle two adits, driven southward side by side, are shown in photo (b). These lead to another open stope working which is about 120' west of the first described adit. A view inside this stope is afforded by photo (c). The photo shows several drifts leading off southward and eastward, one of which connects with the eastern workings. The fourth adit, photo (d), also leads into the workings shown in photo (c), but from the west side of the sandstone nose; this adit is driven eastward. Scintillometer readings in this stope were in the 4000-6000 cps range.

The mine dump extends downslope northward from the eastern and middle two adits (see photo e). While the dump is not large, extending downslope for several hundred feet, slopes are very steep and tailings are being eroded away.

A view westward from the western workings of the mine is shown in photo (f). The numerous dwellings shown in the valley below are about $\frac{1}{2}$ mile away.

- References:
- (1) Hilpert, L., 1969, Uranium Resources of NW New Mexico, U.S.G.S. Prof. Paper 603.
 - (2) Hilpert, L., 1965, Uranium section, in Mineral and Water Resources of New Mexico: New Mexico Bureau of Mines and Mineral Resources Bull. 87.
 - (3) Field notes, 12/4/79.

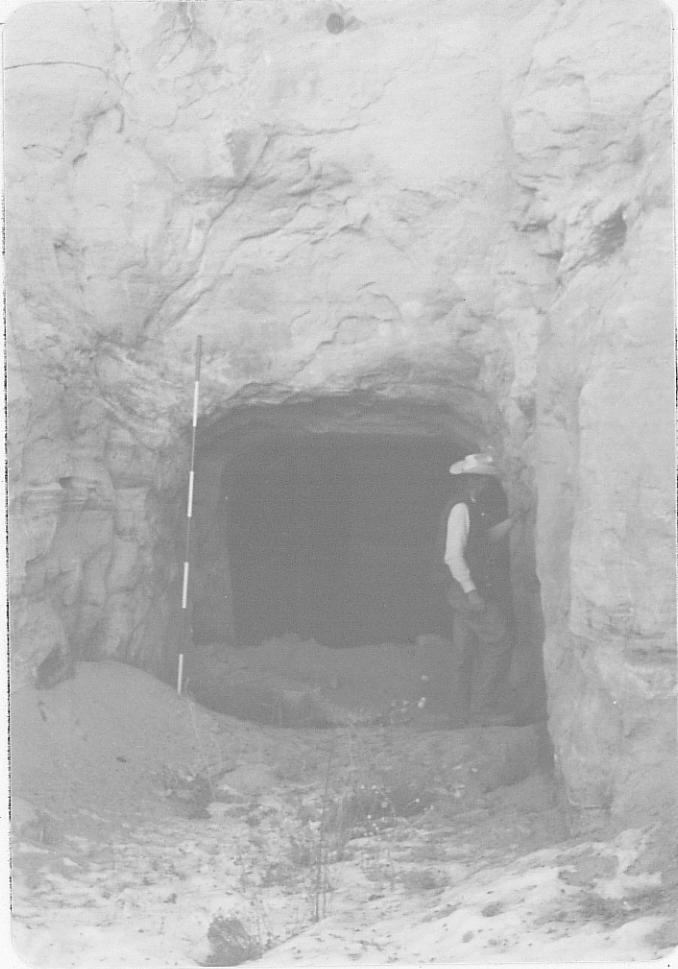


Photo (a) Foutz 3, looking southwest into eastern adit; a jog to left just inside leads to open stope. To right a drift leads to western workings.



Photo (b) Foutz 3, looking southwest into middle two adits each about 8' high, 10' wide; note range pole for scale. Adits lead to western workings which are open stope and drifts.

4 114 Mc-42



Photo (c) View southeastward inside western workings; note drifts at rear, and range pole left of center for scale.

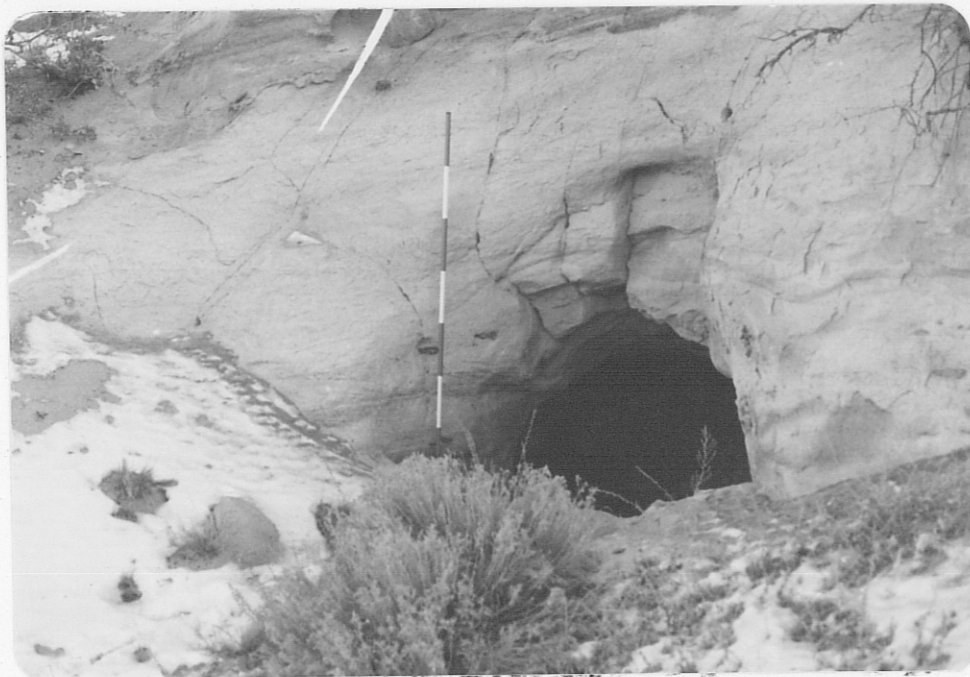


Photo (d) View eastward showing western entrance to open stope area shown in photo (c). Photo (c) was taken from a point just inside this entrance.



Photo (e) Mine dump just below eastern workings; note remains of sign warning of radioactivity at the site.



Photo (f) View westward from mine showing local topography and proximity of dwellings just visible at left center in middle distance.

#116 Mc. 44