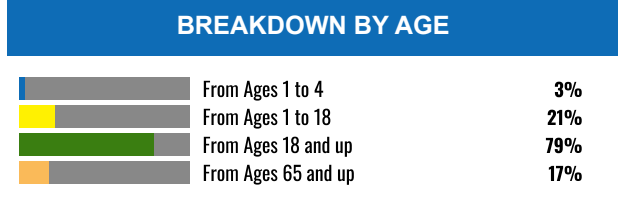
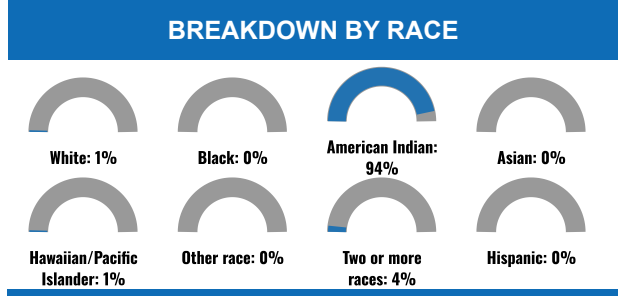
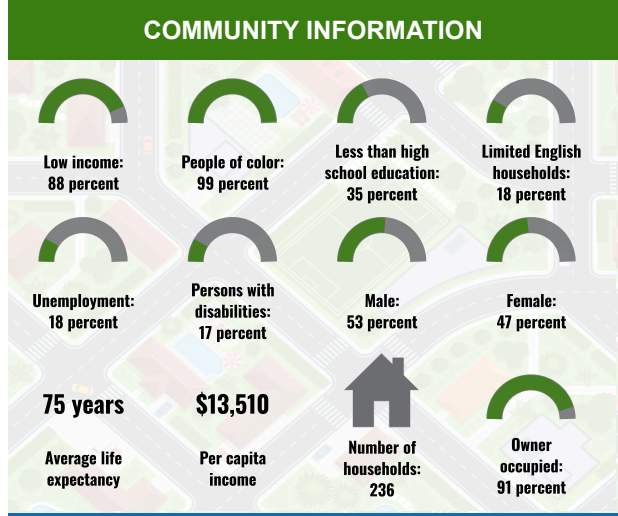
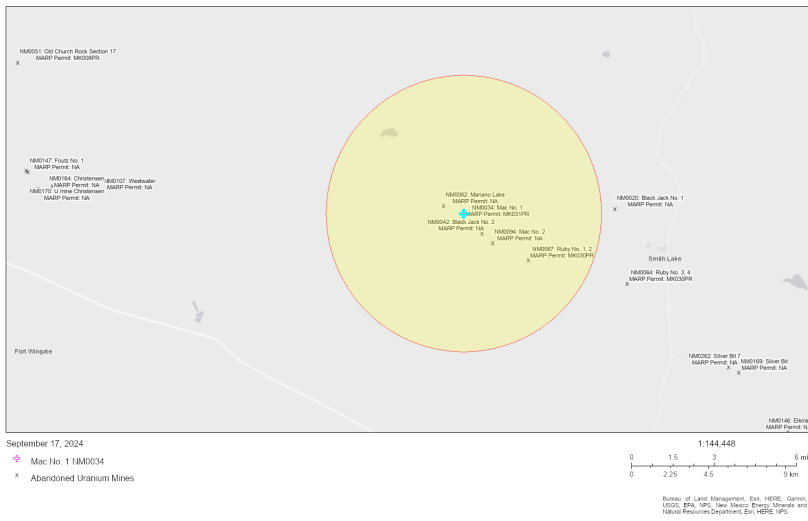




EJScreen Community Report

This report provides environmental and socioeconomic information for user-defined areas, and combines that data into environmental justice and supplemental indexes.

Mac No. 1 NM0034 5 miles Ring Centered at 35.543189,-108.265035
 Population: 720
 Area in square miles: 78.53



LANGUAGES SPOKEN AT HOME

LANGUAGE	PERCENT
English	40%
Other and Unspecified	60%
Total Non-English	60%

Notes: Numbers may not sum to totals due to rounding. Hispanic population can be of any race. Source: U.S. Census Bureau American Community Survey (ACS) 2018-2022. Life expectancy data comes from the Centers for Disease Control.

Report for 5 miles Ring Centered at 35.543189,-108.265035
 Report produced September 17, 2024 using EJScreen Version 2.3

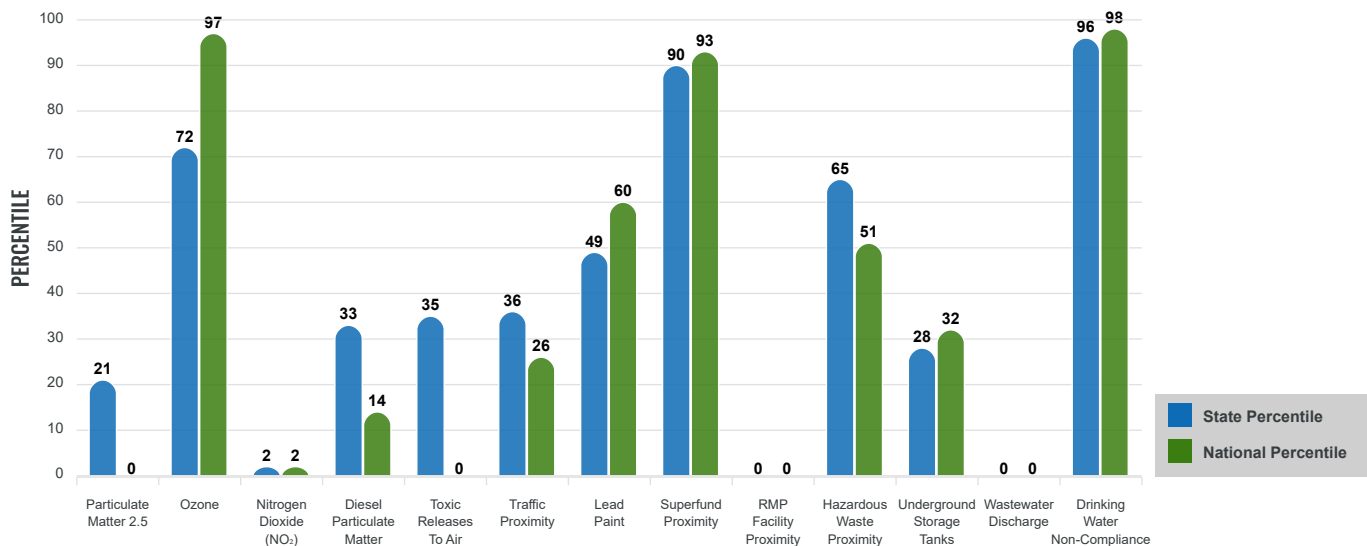
Environmental Justice & Supplemental Indexes

The environmental justice and supplemental indexes are a combination of environmental and socioeconomic information. There are thirteen EJ indexes and supplemental indexes in EJScreen reflecting the 13 environmental indicators. The indexes for a selected area are compared to those for all other locations in the state or nation. For more information and calculation details on the EJ and supplemental indexes, please visit the [EJScreen website](#).

EJ INDEXES

The EJ indexes help users screen for potential EJ concerns. To do this, the EJ index combines data on low income and people of color populations with a single environmental indicator.

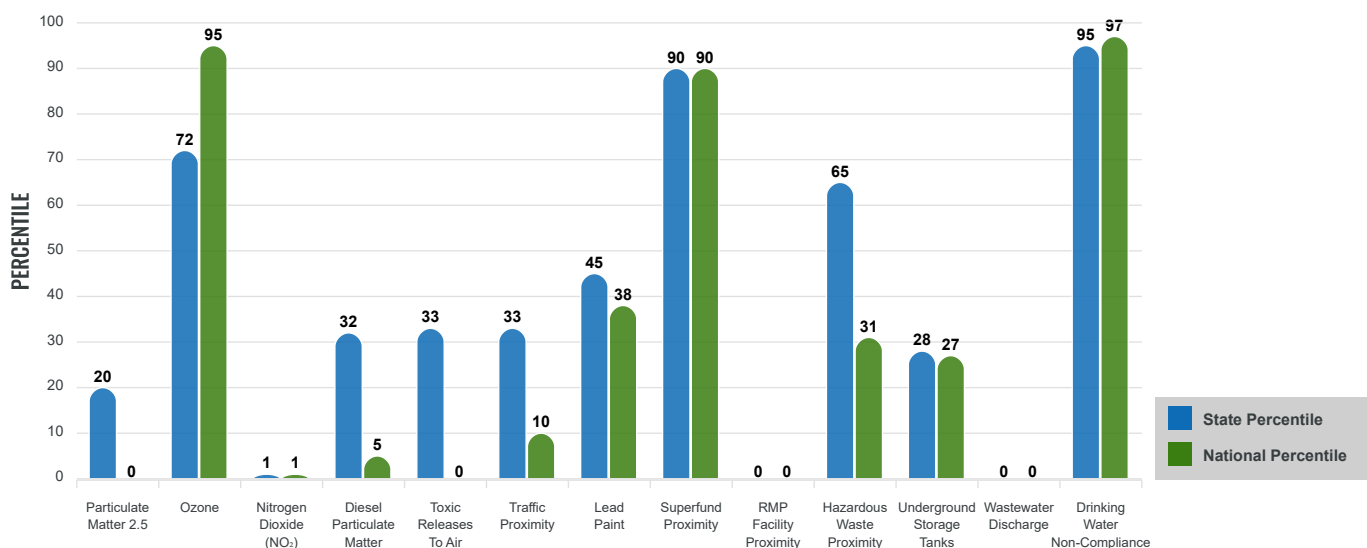
EJ INDEXES FOR THE SELECTED LOCATION



SUPPLEMENTAL INDEXES

The supplemental indexes offer a different perspective on community-level vulnerability. They combine data on percent low income, percent persons with disabilities, percent less than high school education, percent limited English speaking, and percent low life expectancy with a single environmental indicator.

SUPPLEMENTAL INDEXES FOR THE SELECTED LOCATION



Report for 5 miles Ring Centered at 35.543189,-108.265035

Report produced September 17, 2024 using EJScreen Version 2.3

EJScreen Environmental and Socioeconomic Indicators Data

SELECTED VARIABLES	VALUE	STATE AVERAGE	PERCENTILE IN STATE	USA AVERAGE	PERCENTILE IN USA
ENVIRONMENTAL BURDEN INDICATORS					
Particulate Matter 2.5 (µg/m ³)	4.74	6.11	8	8.45	0
Ozone (ppb)	64.1	65.3	35	61.8	67
Nitrogen Dioxide (NO ₂) (ppbv)	0.98	8.1	0	7.8	0
Diesel Particulate Matter (µg/m ³)	0.0313	0.187	15	0.191	2
Toxic Releases to Air (toxicity-weighted concentration)	0	29	15	4,600	0
Traffic Proximity (daily traffic count/distance to road)	16,000	730,000	18	1,700,000	6
Lead Paint (% Pre-1960 Housing)	0.026	0.19	30	0.3	20
Superfund Proximity (site count/km distance)	0.057	0.34	61	0.39	56
RMP Facility Proximity (facility count/km distance)	0	0.2	0	0.57	0
Hazardous Waste Proximity (facility count/km distance)	0.065	1.2	36	3.5	15
Underground Storage Tanks (count/km ²)	0.0017	2.8	28	3.6	27
Wastewater Discharge (toxicity-weighted concentration/m distance)	0	990000	0	700000	0
Drinking Water Non-Compliance (points)	1.7	5.6	81	2.2	84
SOCIOECONOMIC INDICATORS					
Demographic Index USA	3.64	N/A	N/A	1.34	99
Supplemental Demographic Index USA	3.08	N/A	N/A	1.64	96
Demographic Index State	4.01	2.16	99	N/A	N/A
Supplemental Demographic Index State	2.83	1.62	95	N/A	N/A
People of Color	99%	62%	96	40%	96
Low Income	88%	39%	98	30%	98
Unemployment Rate	18%	6%	92	6%	94
Limited English Speaking Households	18%	6%	90	5%	92
Less Than High School Education	35%	14%	92	11%	94
Under Age 5	3%	5%	39	5%	33
Over Age 64	17%	20%	48	18%	53

*Diesel particulate matter index is from the EPA's Air Toxics Data Update, which is the Agency's ongoing, comprehensive evaluation of air toxics in the United States. This effort aims to prioritize air toxics, emission sources, and locations of interest for further study. It is important to remember that the air toxics data presented here provide broad estimates of health risks over geographic areas of the country, not definitive risks to specific individuals or locations. More information on the Air Toxics Data Update can be found at: <https://www.epa.gov/haps/air-toxics-data-update>.

Sites reporting to EPA within defined area:

Superfund	0
Hazardous Waste, Treatment, Storage, and Disposal Facilities	0
Water Dischargers	5
Air Pollution	0
Brownfields	0
Toxic Release Inventory	0

Other community features within defined area:

Schools	1
Hospitals	0
Places of Worship	1

Other environmental data:

Air Non-attainment	No
Impaired Waters	Yes

Selected location contains American Indian Reservation Lands*	Yes
Selected location contains a "Justice40 (CEJST)" disadvantaged community	Yes
Selected location contains an EPA IRA disadvantaged community	Yes

Report for 5 miles Ring Centered at 35.543189,-108.265035
 Report produced September 17, 2024 using EJScreen Version 2.3

EJScreen Environmental and Socioeconomic Indicators Data

HEALTH INDICATORS

INDICATOR	VALUE	STATE AVERAGE	STATE PERCENTILE	US AVERAGE	US PERCENTILE
Low Life Expectancy	23%	19%	82	20%	80
Heart Disease	9.4	5.9	97	5.8	96
Asthma	16.3	11.2	99	10.3	99
Cancer	5.2	6.1	27	6.4	25
Persons with Disabilities	16.5%	17.1%	52	13.7%	72

CLIMATE INDICATORS

INDICATOR	VALUE	STATE AVERAGE	STATE PERCENTILE	US AVERAGE	US PERCENTILE
Flood Risk	0%	9%	18	12%	11
Wildfire Risk	0%	58%	0	14%	0

CRITICAL SERVICE GAPS

INDICATOR	VALUE	STATE AVERAGE	STATE PERCENTILE	US AVERAGE	US PERCENTILE
Broadband Internet	69%	20%	97	13%	99
Lack of Health Insurance	19%	10%	91	9%	91
Housing Burden	No	N/A	N/A	N/A	N/A
Transportation Access Burden	Yes	N/A	N/A	N/A	N/A
Food Desert	Yes	N/A	N/A	N/A	N/A

Report for 5 miles Ring Centered at 35.543189,-108.265035

Report produced September 17, 2024 using EJScreen Version 2.3

Location: User-specified point center at 35.543189, -108.265035
 Ring (buffer): 5-miles radius
 Description: Mac No. 1 NM0034

Summary of ACS Estimates		2018 - 2022
Population		720
Population Density (per sq. mile)		9
People of Color Population		715
% People of Color Population		99%
Households		236
Housing Units		323
Housing Units Built Before 1950		5
Per Capita Income		13,510
Land Area (sq. miles) (Source: SF1)		84.35
% Land Area		100%
Water Area (sq. miles) (Source: SF1)		0.07
% Water Area		0%

	2018 - 2022 ACS Estimates	Percent	MOE (±)
Population by Race			
Total	720	100%	313
Population Reporting One Race	688	96%	378
White	6	1%	13
Black	0	0%	13
American Indian	677	94%	313
Asian	0	0%	13
Pacific Islander	4	1%	13
Some Other Race	0	0%	13
Population Reporting Two or More Races	32	4%	49
Total Hispanic Population	2	0%	13
Total Non-Hispanic Population	718		
White Alone	4	1%	13
Black Alone	0	0%	13
American Indian Alone	677	94%	313
Non-Hispanic Asian Alone	0	0%	13
Pacific Islander Alone	4	1%	13
Other Race Alone	0	0%	13
Two or More Races Alone	32	4%	49
Population by Sex			
Male	383	53%	175
Female	337	47%	149
Population by Age			
Age 0-4	21	3%	19
Age 0-17	151	21%	64
Age 18+	568	79%	116
Age 65+	121	17%	55

Data Note: Detail may not sum to totals due to rounding. Hispanic population can be of any race.

N/A means not available. **Source:** U.S. Census Bureau, American Community Survey (ACS) 2018 - 2022

Location: User-specified point center at 35.543189, -108.265035
 Ring (buffer): 5-miles radius
 Description: Mac No. 1 NM0034

	2018 - 2022 ACS Estimates	Percent	MOE (±)
Population 25+ by Educational Attainment			
Total	488	100%	190
Less than 9th Grade	59	12%	48
9th - 12th Grade, No Diploma	114	23%	57
High School Graduate	208	43%	64
Some College, No Degree	66	13%	50
Associate Degree	17	3%	19
Bachelor's Degree or more	24	5%	41
Population Age 5+ Years by Ability to Speak English			
Total	698	100%	298
Speak only English	232	33%	85
Non-English at Home ¹⁺²⁺³⁺⁴	466	67%	198
¹ Speak English "very well"	380	54%	140
² Speak English "well"	64	9%	108
³ Speak English "not well"	17	2%	73
⁴ Speak English "not at all"	4	1%	44
³⁺⁴ Speak English "less than well"	21	3%	85
²⁺³⁺⁴ Speak English "less than very well"	86	12%	137
Limited English Speaking Households*			
Total	43	100%	44
Speak Spanish	0	0%	13
Speak Other Indo-European Languages	0	0%	13
Speak Asian-Pacific Island Languages	0	0%	13
Speak Other Languages	43	100%	38
Households by Household Income			
Household Income Base	236	100%	67
< \$15,000	88	37%	41
\$15,000 - \$25,000	50	21%	21
\$25,000 - \$50,000	60	25%	25
\$50,000 - \$75,000	11	5%	36
\$75,000 +	27	12%	34
Occupied Housing Units by Tenure			
Total	236	100%	67
Owner Occupied	214	91%	64
Renter Occupied	22	9%	14
Employed Population Age 16+ Years			
Total	588	100%	219
In Labor Force	209	36%	75
Civilian Unemployed in Labor Force	38	18%	27
Not In Labor Force	379	64%	158

Data Note: Detail may not sum to totals due to rounding. Hispanic population can be of anyrace.

N/A means not available. **Source:** U.S. Census Bureau, American Community Survey (ACS)

*Households in which no one 14 and over speaks English "very well" or speaks English only.

Location: User-specified point center at 35.543189, -108.265035

Ring (buffer): 5-miles radius

Description: Mac No. 1 NM0034

	2018 - 2022 ACS Estimates	Percent	MOE (±)
Population by Language Spoken at Home*			
Total (persons age 5 and above)	1,097	100%	267
English	443	40%	189
Spanish	0	0%	13
French, Haitian, or Cajun	0	0%	13
German or other West Germanic	0	0%	13
Russian, Polish, or Other Slavic	0	0%	13
Other Indo-European	0	0%	13
Korean	0	0%	13
Chinese (including Mandarin, Cantonese)	0	0%	13
Vietnamese	0	0%	13
Tagalog (including Filipino)	0	0%	13
Other Asian and Pacific Island	0	0%	13
Arabic	0	0%	13
Other and Unspecified	654	60%	253
Total Non-English	654	60%	327

Data Note: Detail may not sum to totals due to rounding. Hispanic population can be of any race.
N/A means not available. **Source:** U.S. Census Bureau, American Community Survey (ACS) 2018 - 2022.
*Population by Language Spoken at Home is available at the census tract summary level and up.