



EJScreen Community Report

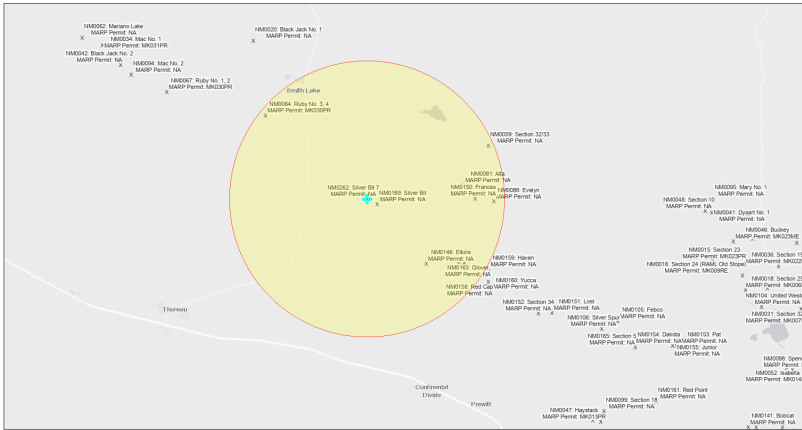
This report provides environmental and socioeconomic information for user-defined areas, and combines that data into environmental justice and supplemental indexes.

Silver Bit 7 NM0262

5 miles Ring Centered at 35.462434,-108.094319

Population: 818

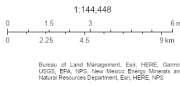
Area in square miles: 78.53



September 25, 2024

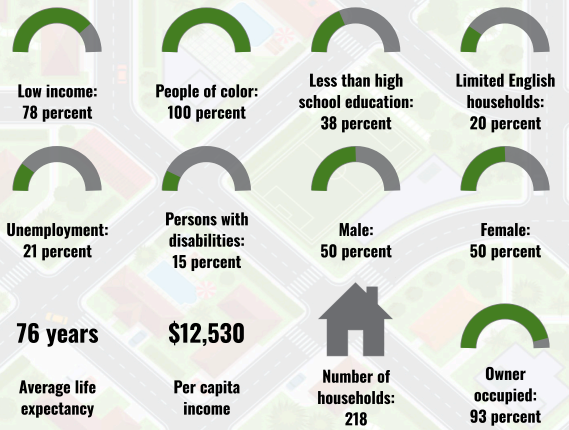
✦ Silver Bit 7 NM0262

✧ Abandoned Uranium Mines

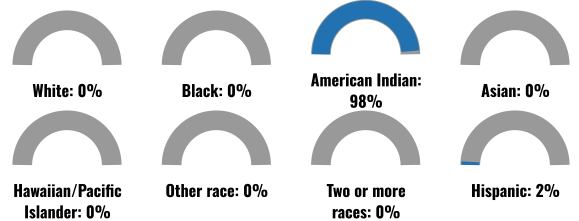


Bureau of Land Management, EPA, HERS, GeInfo, USGS, BIA, IHS, New Mexico Energy, Storage and Natural Resources Department, EPA, HERS, IHS

COMMUNITY INFORMATION



BREAKDOWN BY RACE



BREAKDOWN BY AGE



LIMITED ENGLISH SPEAKING BREAKDOWN



Notes: Numbers may not sum to totals due to rounding. Hispanic population can be of any race. Source: U.S. Census Bureau American Community Survey (ACS) 2018-2022. Life expectancy data comes from the Centers for Disease Control.

LANGUAGES SPOKEN AT HOME

LANGUAGE	PERCENT
English	31%
Other and Unspecified	69%
Total Non-English	69%

Report for 5 miles Ring Centered at 35.462434,-108.094319

Report produced September 25, 2024 using EJScreen Version 2.3

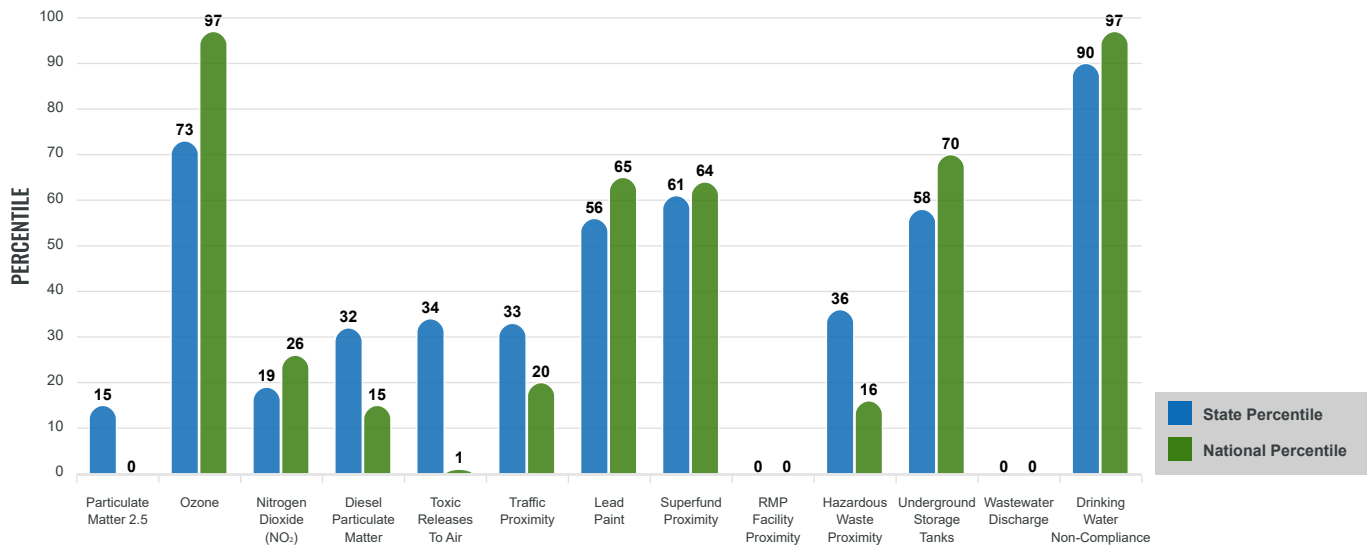
Environmental Justice & Supplemental Indexes

The environmental justice and supplemental indexes are a combination of environmental and socioeconomic information. There are thirteen EJ indexes and supplemental indexes in EJScreen reflecting the 13 environmental indicators. The indexes for a selected area are compared to those for all other locations in the state or nation. For more information and calculation details on the EJ and supplemental indexes, please visit the [EJScreen website](#).

EJ INDEXES

The EJ indexes help users screen for potential EJ concerns. To do this, the EJ index combines data on low income and people of color populations with a single environmental indicator.

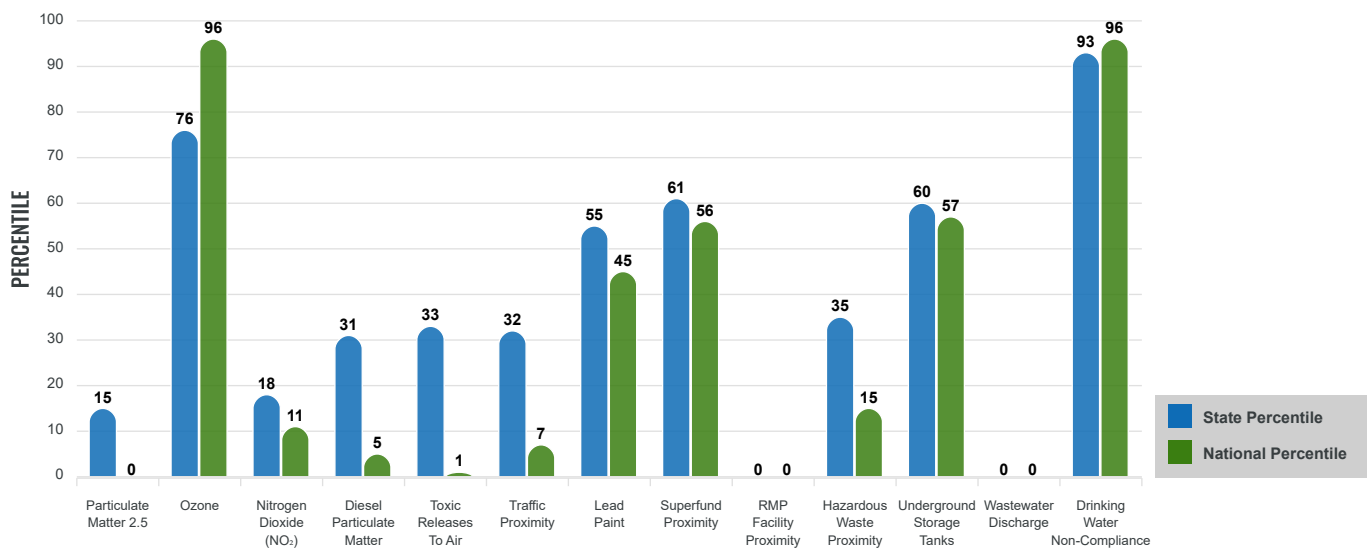
EJ INDEXES FOR THE SELECTED LOCATION



SUPPLEMENTAL INDEXES

The supplemental indexes offer a different perspective on community-level vulnerability. They combine data on percent low income, percent persons with disabilities, percent less than high school education, percent limited English speaking, and percent low life expectancy with a single environmental indicator.

SUPPLEMENTAL INDEXES FOR THE SELECTED LOCATION



Report for 5 miles Ring Centered at 35.462434,-108.094319

Report produced September 25, 2024 using EJScreen Version 2.3

EJScreen Environmental and Socioeconomic Indicators Data

SELECTED VARIABLES	VALUE	STATE AVERAGE	PERCENTILE IN STATE	USA AVERAGE	PERCENTILE IN USA
ENVIRONMENTAL BURDEN INDICATORS					
Particulate Matter 2.5 (µg/m ³)	4.69	6.11	7	8.45	0
Ozone (ppb)	64.7	65.3	37	61.8	69
Nitrogen Dioxide (NO ₂) (ppbv)	2.8	8.1	8	7.8	5
Diesel Particulate Matter (µg/m ³)	0.0319	0.187	15	0.191	2
Toxic Releases to Air (toxicity-weighted concentration)	0	29	16	4,600	1
Traffic Proximity (daily traffic count/distance to road)	12,000	730,000	16	1,700,000	5
Lead Paint (% Pre-1960 Housing)	0.031	0.19	31	0.3	22
Superfund Proximity (site count/km distance)	0.097	0.34	64	0.39	58
RMP Facility Proximity (facility count/km distance)	0	0.2	0	0.57	0
Hazardous Waste Proximity (facility count/km distance)	0.003	1.2	35	3.5	15
Underground Storage Tanks (count/km ²)	0.043	2.8	35	3.6	30
Wastewater Discharge (toxicity-weighted concentration/m distance)	0	990000	0	700000	0
Drinking Water Non-Compliance (points)	0.85	5.6	74	2.2	76
SOCIOECONOMIC INDICATORS					
Demographic Index USA	3.41	N/A	N/A	1.34	98
Supplemental Demographic Index USA	3.02	N/A	N/A	1.64	96
Demographic Index State	3.8	2.16	98	N/A	N/A
Supplemental Demographic Index State	2.79	1.62	94	N/A	N/A
People of Color	100%	62%	98	40%	98
Low Income	78%	39%	94	30%	96
Unemployment Rate	22%	6%	95	6%	96
Limited English Speaking Households	20%	6%	91	5%	93
Less Than High School Education	38%	14%	94	11%	96
Under Age 5	4%	5%	51	5%	45
Over Age 64	11%	20%	24	18%	28

*Diesel particulate matter index is from the EPA's Air Toxics Data Update, which is the Agency's ongoing, comprehensive evaluation of air toxics in the United States. This effort aims to prioritize air toxics, emission sources, and locations of interest for further study. It is important to remember that the air toxics data presented here provide broad estimates of health risks over geographic areas of the country, not definitive risks to specific individuals or locations. More information on the Air Toxics Data Update can be found at: <https://www.epa.gov/haps/air-toxics-data-update>.

Sites reporting to EPA within defined area:

Superfund	0
Hazardous Waste, Treatment, Storage, and Disposal Facilities	0
Water Dischargers	6
Air Pollution	6
Brownfields	1
Toxic Release Inventory	1

Other community features within defined area:

Schools	0
Hospitals	0
Places of Worship	3

Other environmental data:

Air Non-attainment	No
Impaired Waters	No

Selected location contains American Indian Reservation Lands*	Yes
Selected location contains a "Justice40 (CEJST)" disadvantaged community	Yes
Selected location contains an EPA IRA disadvantaged community	Yes

*Report for 5 miles Ring Centered at 35.462434,-108.094319
Report produced September 25, 2024 using EJScreen Version 2.3*

EJScreen Environmental and Socioeconomic Indicators Data

HEALTH INDICATORS

INDICATOR	VALUE	STATE AVERAGE	STATE PERCENTILE	US AVERAGE	US PERCENTILE
Low Life Expectancy	23%	19%	79	20%	78
Heart Disease	9.2	5.9	96	5.8	96
Asthma	15.8	11.2	99	10.3	99
Cancer	5.2	6.1	27	6.4	25
Persons with Disabilities	14.7%	17.1%	41	13.7%	62

CLIMATE INDICATORS

INDICATOR	VALUE	STATE AVERAGE	STATE PERCENTILE	US AVERAGE	US PERCENTILE
Flood Risk	12%	9%	75	12%	73
Wildfire Risk	0%	58%	0	14%	0

CRITICAL SERVICE GAPS

INDICATOR	VALUE	STATE AVERAGE	STATE PERCENTILE	US AVERAGE	US PERCENTILE
Broadband Internet	79%	20%	99	13%	99
Lack of Health Insurance	20%	10%	92	9%	92
Housing Burden	No	N/A	N/A	N/A	N/A
Transportation Access Burden	Yes	N/A	N/A	N/A	N/A
Food Desert	Yes	N/A	N/A	N/A	N/A

Report for 5 miles Ring Centered at 35.462434,-108.094319

Report produced September 25, 2024 using EJScreen Version 2.3

Location: User-specified point center at 35.462434, -108.094319
 Ring (buffer): 5-miles radius
 Description: Silver Bit 7 NM0262

Summary of ACS Estimates		2018 - 2022
Population		818
Population Density (per sq. mile)		10
People of Color Population		818
% People of Color Population		100%
Households		218
Housing Units		265
Housing Units Built Before 1950		5
Per Capita Income		12,530
Land Area (sq. miles) (Source: SF1)		78.46
% Land Area		100%
Water Area (sq. miles) (Source: SF1)		0.16
% Water Area		0%

	2018 - 2022 ACS Estimates	Percent	MOE (±)
Population by Race			
Total	818	100%	605
Population Reporting One Race	810	99%	692
White	0	0%	13
Black	0	0%	17
American Indian	809	99%	603
Asian	1	0%	33
Pacific Islander	0	0%	13
Some Other Race	0	0%	13
Population Reporting Two or More Races	8	1%	49
Total Hispanic Population	19	2%	534
Total Non-Hispanic Population	800		
White Alone	0	0%	13
Black Alone	0	0%	17
American Indian Alone	799	98%	339
Non-Hispanic Asian Alone	1	0%	33
Pacific Islander Alone	0	0%	13
Other Race Alone	0	0%	13
Two or More Races Alone	0	0%	13
Population by Sex			
Male	409	50%	380
Female	409	50%	263
Population by Age			
Age 0-4	34	4%	39
Age 0-17	228	28%	239
Age 18+	591	72%	206
Age 65+	89	11%	58

Data Note: Detail may not sum to totals due to rounding. Hispanic population can be of any race.

N/A means not available. **Source:** U.S. Census Bureau, American Community Survey (ACS) 2018 - 2022

Location: User-specified point center at 35.462434, -108.094319
 Ring (buffer): 5-miles radius
 Description: Silver Bit 7 NM0262

	2018 - 2022 ACS Estimates	Percent	MOE (±)
Population 25+ by Educational Attainment			
Total	501	100%	235
Less than 9th Grade	76	15%	52
9th - 12th Grade, No Diploma	116	23%	62
High School Graduate	167	33%	120
Some College, No Degree	89	18%	50
Associate Degree	24	5%	32
Bachelor's Degree or more	29	6%	40
Population Age 5+ Years by Ability to Speak English			
Total	784	100%	605
Speak only English	210	27%	450
Non-English at Home ¹⁺²⁺³⁺⁴	574	73%	198
¹ Speak English "very well"	379	48%	162
² Speak English "well"	125	16%	108
³ Speak English "not well"	69	9%	73
⁴ Speak English "not at all"	2	0%	45
³⁺⁴ Speak English "less than well"	71	9%	85
²⁺³⁺⁴ Speak English "less than very well"	195	25%	137
Limited English Speaking Households*			
Total	43	100%	44
Speak Spanish	0	0%	13
Speak Other Indo-European Languages	0	0%	13
Speak Asian-Pacific Island Languages	0	0%	13
Speak Other Languages	43	100%	38
Households by Household Income			
Household Income Base	218	100%	116
< \$15,000	80	37%	47
\$15,000 - \$25,000	34	16%	76
\$25,000 - \$50,000	41	19%	39
\$50,000 - \$75,000	35	16%	52
\$75,000 +	27	13%	40
Occupied Housing Units by Tenure			
Total	218	100%	116
Owner Occupied	202	93%	107
Renter Occupied	16	7%	20
Employed Population Age 16+ Years			
Total	629	100%	375
In Labor Force	234	37%	192
Civilian Unemployed in Labor Force	49	21%	81
Not In Labor Force	395	63%	210

Data Note: Detail may not sum to totals due to rounding. Hispanic population can be of anyrace.

N/A means not available. **Source:** U.S. Census Bureau, American Community Survey (ACS)

*Households in which no one 14 and over speaks English "very well" or speaks English only.

Location: User-specified point center at 35.462434, -108.094319

Ring (buffer): 5-miles radius

Description: Silver Bit 7 NM0262

	2018 - 2022 ACS Estimates	Percent	MOE (±)
Population by Language Spoken at Home*			
Total (persons age 5 and above)	908	100%	328
English	277	31%	133
Spanish	0	0%	13
French, Haitian, or Cajun	0	0%	13
German or other West Germanic	0	0%	13
Russian, Polish, or Other Slavic	0	0%	13
Other Indo-European	0	0%	13
Korean	0	0%	13
Chinese (including Mandarin, Cantonese)	0	0%	13
Vietnamese	0	0%	13
Tagalog (including Filipino)	0	0%	13
Other Asian and Pacific Island	0	0%	13
Arabic	0	0%	13
Other and Unspecified	631	69%	266
Total Non-English	631	69%	354

Data Note: Detail may not sum to totals due to rounding. Hispanic population can be of any race.
N/A means not available. **Source:** U.S. Census Bureau, American Community Survey (ACS) 2018 - 2022.
*Population by Language Spoken at Home is available at the census tract summary level and up.