

September 12, 2025

Ms. Miori Harms
Uranium Mine Reclamation Coordinator
New Mexico Environment Department - Office of the Secretary
Office of Strategic Initiatives
121 Tijeras Ave NE, Suite 1000
Albuquerque, New Mexico 87102

**RE: STAGE I URANIUM MINE SITE ASSESSMENT LETTER REPORT
SCHMITT DECLINE MINE (NM0261)**

Dear Ms. Harms:

EA Engineering, Science, and Technology, Inc., PBC (EA) is pleased to submit this letter report to New Mexico Environmental Department (NMED) describing the activities and plans completed as part of the Stage 1 Uranium Mine Site Assessment (UMSA) for the Schmitt Decline Mine in the Grants Mining District. The activities and plans completed were in general accordance with the project schedule provided in the Notice to Proceed dated July 1, 2025. Stage 1 UMSA activities were completed prior to mobilization for Stage 2 UMSA field activities for the purpose of providing preliminary site-specific information.

Schmitt Decline Mine Background

The Schmitt Decline Mine (NM0261; NMED, 2025) is located in McKinley County, approximately 13 miles northeast of Milan, New Mexico, and approximately 1.32 miles northwest of the intersection between New Mexico State Highways 509 and 605 within New Mexico Land Office managed land (Figure 1).

NMED conducted a site assessment on June 2, 2009 (NMED, 2009) and noted that the Schmitt Decline Mine was operated as a dry mine. The surface conditions consist of multiple mine waste rock piles, open unfenced decline entrance, remnant mining equipment, miscellaneous debris, and an access road. NMED reported that one pile of sandstone material (northeast pile) had the highest gamma radiation reading of 2,687 counts per second (Figure 2).

In October 2011, U.S. Environmental Protection Agency (EPA, 2012) conducted an aerial radiological survey in the Poison Canyon area of the Ambrosia Lake sub-district by using the Airborne Spectral Photometric Environmental Collection Technology (ASPECT) and Schmitt Decline Mine was included. The gamma radiation readings at the Schmitt Decline Mine collected by ASPECT were not statistically greater than background readings in the area.

Stage 1 UMSA – Schmitt Decline Mine

The Stage 1 UMSA provided the project execution documents for NMED's review along with a work plan to implement the Stage 2 UMSA. This Stage 1 UMSA Report includes the following elements:

- **Section 1.1** – Site Background and Records Search Results

- **Section 1.2** – Public Involvement Plan and Community Relations Plan
- **Section 1.3** – Site-Specific Health and Safety Plan, Job Hazard Analysis, and Radiation Protection Plan
- **Section 1.4** – Sampling and Analysis Plan, Field Sampling Plan, and Quality Assurance Project Plan
- **Section 1.5** – Stage 2 UMSA Work Plan

1.1 Site Background and Records Search Results

EA researched and reviewed existing and readily available documentation available for Schmitt Decline Mine and used this information to inform the proposed project approach. Findings were summarized and presented in the technical letter, “*Re: Proposed Project Approach for Schmitt Decline Uranium Mine Site Assessment, Milan, New Mexico*”, dated August 12, 2025 (EA, 2025a).

1.2 Public Involvement Plan and Community Relations Plan

A Public Involvement Plan (PIP) (EA, 2025b) and a Community Relations Plan (CRP) (EA, 2025c) were prepared with input from and reviewed by Mr. Jorge A. Munoz-Negron, NMED Uranium Project Lead, and Ms. Kate Cardenas, NMED Community Engagement Coordinator. The PIP and CRP were approved by NMED on August 13, 2025.

The PIP was prepared in accordance with the NMED Office of the Secretary Public Participation Policy 07-13 (NMED, 2018), which incorporates the requirements of the Policy 07-13 and applicable regulatory and statutory public participation requirements. The CRP provided additional site background information, an overview of the community relations plan, points of contact, and community background.

1.3 Site-Specific Health and Safety Plan, Job Hazard Analysis, and Radiation Protection Plan

A Site-Specific Health and Safety Plan (SSHSP) with Job Hazard Analyses (JHA) (EA, 2025d) was created for the scope of work planned at Schmitt Decline Mine. The SSHSP included the health and safety requirements for field personnel and the JHAs provided descriptions of the procedures that were performed along with the potential risks and mitigations.

In addition, a Radiation Protection Plan (RPP) (ESFS, 2025a) was prepared describing the radiation protection activities required to conduct Stage 2 UMSA field activities. The RPP was prepared to ensure the health and safety of the general public and to protect the field personnel and environment during site activities by anticipating, identifying, evaluating, and controlling radiological hazards.

The SSHP with JHA and RPP were provided to NMED on August 28, 2025.

1.4 Sampling and Analysis Plan - Field Sampling Plan - Quality Assurance Project Plan

A Sampling and Analysis Plan (SAP) (ESFS, 2025b), including a Field Sampling Plan and Quality Assurance Project Plan, was prepared to define project objectives and ensure data quality to support the characterization and future remediation. The SAP provided sampling and analysis

procedures, quality control and assurance procedures, and rationale for the radiological investigation activities. The SAP was provided to NMED on August 28, 2025.

1.5 Stage 2 UMSA Work Plan

A Stage 2 UMSA Work Plan (EA, 2025e) was prepared to describe the field activities required to conduct the Stage 2 UMSA in accordance with the PIP and CRP (Section 1.2), SSHSP and RPP (Section 1.3), and SAP (Section 1.4) described above. Work was performed in accordance with the *Joint Guidance for the Cleanup and Reclamation of Existing Uranium Mining Operations in New Mexico* (NMENMRD/NMED, 2016). The Stage 2 UMSA Work Plan included the final Title Search findings for Schmitt Decline Mine (INTERA, 2025). NMED approved the final Stage 2 UMSA Work Plan on September 10, 2025.

If you have any questions, please do not hesitate to contact me at rust@eaest.com on my cell phone at 505-321-4515.

Sincerely,



Colleen Rust, PMP, PG, CPG
Contract Manager

FIGURES

Figure 1 – Site Map

Figure 2 – Site Feature Map

REFERENCES

EA Engineering, Science, and Technology, Inc., PBC (EA), 2025a. *Re: Proposed Project Approach for Schmitt Decline Uranium Mine Site Assessment, Milan, New Mexico*. August 2025.

EA, 2025b. *Public Involvement Plan, New Mexico Environment Department Uranium Mine Reclamation Program, Schmitt Decline Mine, Grants Mining District, New Mexico*. August 2025.

EA, 2025c. *Community Relations Plan, NMED Uranium Mine Reclamation Program, Schmitt Decline Mine, Grants Mining District, New Mexico*. August 2025.

EA, 2025d. *Site-Specific Health and Safety Plan, Schmitt Decline Mine, Grants Mining District, New Mexico*. August 2025.

EA, 2025e. *Work Plan for the Schmitt Decline Mine Site Assessment McKinley County, New Mexico*. September 2025.

Energy, Minerals, & Natural Resources Department (EMNRD) and New Mexico Environment Department (NMED), 2016. *Joint Guidance for the Cleanup and Reclamation of Existing Uranium Mining Operations in New Mexico*. March 2016.

EnergySolutions Federal Services (ESFS), 2025a. *Radiation Protection Plan, Schmitt Decline Uranium Mine (NM0261)*. (2025)

ESFS, 2025b. *Sampling and Analysis Plan (SAP), Soils Remediation of the Schmitt Decline Uranium Mine (NM0261)*. August 2025.

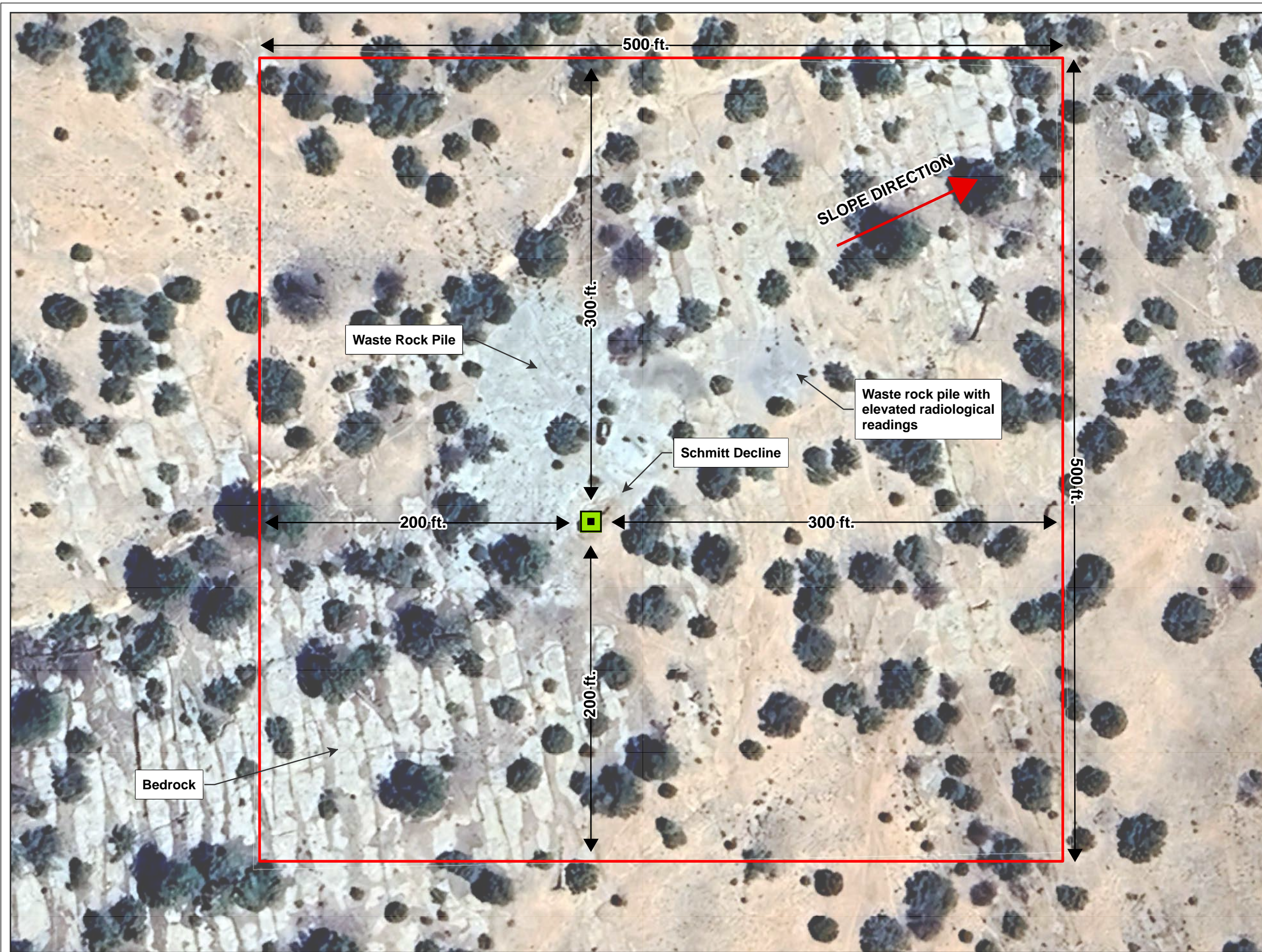
INTERA, 2025. *Title Search Findings: Schmitt Decline*. September 2025.

New Mexico Environment Department (NMED), 2009. *Subject: Pre-CERCLIS Screening Assessment of Schmitt Decline Mine, McKinley County, New Mexico: Further action under CERCLA recommended*. September 10, 2009.

NMED, 2018. Office of the Secretary, *Policy 07-13, Public Participation*. February 6, 2018.

NMED, 2025. Formerly Operating Uranium Mine and Mill Sites Dashboard, Schmitt Decline Mine. <https://nmenv.maps.arcgis.com/apps/dashboards/690621694d4e4906b2ae2886f528eec1>

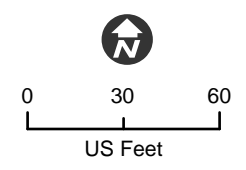
United State Environmental Protection Agency (EPA), 2012. *EPA Region 6 Superfund Site Strategy Recommendation, Schmitt Decline Mine*. January 25, 2012.



- Legend**
- Schmitt Decline Mine
 - Area of Concern

Note:
ft. = feet

Date Saved: 8/15/2025
 Projection: NAD 1983 StatePlane New Mexico West
 FIPS 3003 Feet
 Scale: 1:720



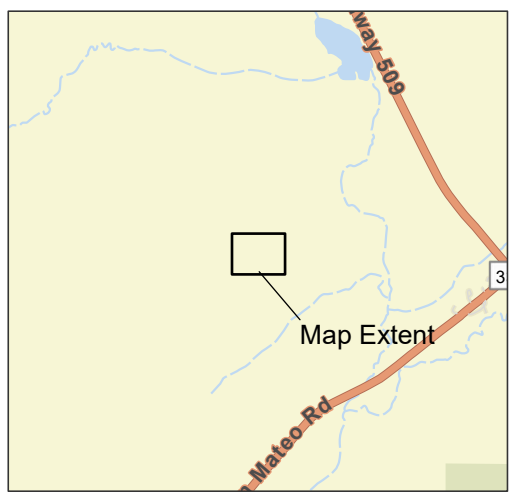
Data Sources: ESRI

Schmitt Decline Mine
 McKinley County, New Mexico

Site Map

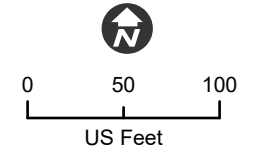
Figure 1





- Legend**
- ★ Parking Spot
 - Debris
 - Remnant Mining Equipment
 - High Reading Pile
 - Overburden
 - Dry Wash
 - Settling Cells
 - Schmitt Decline Tunnel
 - Outside Boundary of Impacted Area (Includes Piles, Surface Cover, and Overburden)
 - Fence Line
 - Access to Site (needs to be cleared by Archaeologist and flagged)
 - Existing Road to Site (assume no Archaeological Survey required)

Date Saved: 7/25/2025
 Projection: NAD 1983 StatePlane New Mexico West
 FIPS 3003 Feet
 Scale: 1:1,200



Data Sources: ESRI

NMED Abandoned Uranium Mine Land Program

Figure 2 - Site Features Map

Schmitt Decline
 SW1/4 SW1/4 Section 16,
 Township 13N, Range 9W
 Milan, New Mexico
 Cibola County, New Mexico

