



EJScreen Community Report

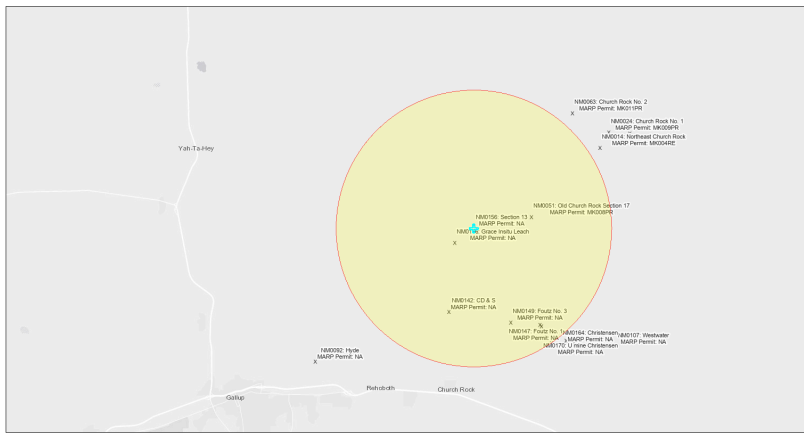
This report provides environmental and socioeconomic information for user-defined areas, and combines that data into environmental justice and supplemental indexes.

Section 13 NM0156

5 miles Ring Centered at 35.616266,-108.589769

Population: 940

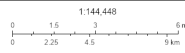
Area in square miles: 78.53



September 24, 2024

Section 13 NM0156

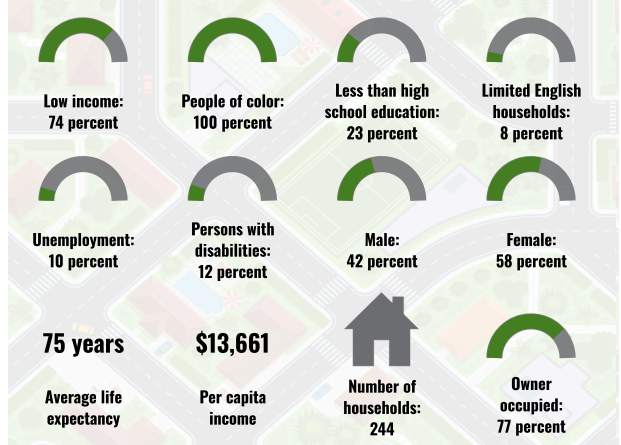
* Abandoned Uranium Mines



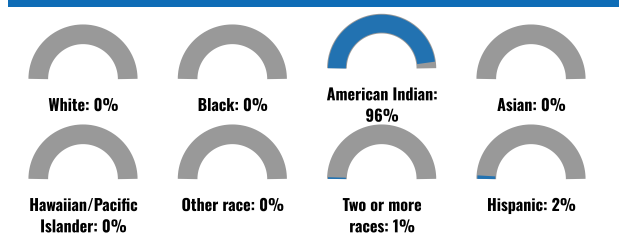
1:144,448

Bureau of Land Management, EPA, HHS, Census, USGS, BIA, IHS, New Mexico Energy, Storage and Natural Resources Department, EIS, HHS, IHS

COMMUNITY INFORMATION



BREAKDOWN BY RACE



BREAKDOWN BY AGE



LIMITED ENGLISH SPEAKING BREAKDOWN



LANGUAGES SPOKEN AT HOME

LANGUAGE	PERCENT
English	45%
Other and Unspecified	55%
Total Non-English	55%

Notes: Numbers may not sum to totals due to rounding. Hispanic population can be of any race. Source: U.S. Census Bureau American Community Survey (ACS) 2018-2022. Life expectancy data comes from the Centers for Disease Control.

Report for 5 miles Ring Centered at 35.616266,-108.589769

Report produced September 24, 2024 using EJScreen Version 2.3

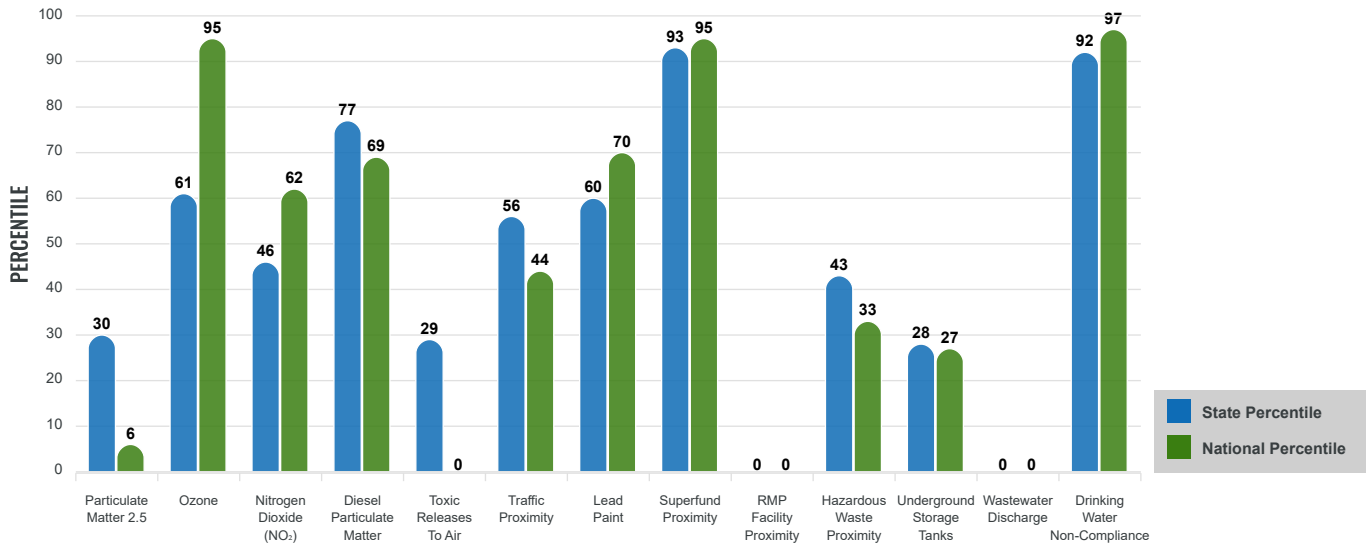
Environmental Justice & Supplemental Indexes

The environmental justice and supplemental indexes are a combination of environmental and socioeconomic information. There are thirteen EJ indexes and supplemental indexes in EJScreen reflecting the 13 environmental indicators. The indexes for a selected area are compared to those for all other locations in the state or nation. For more information and calculation details on the EJ and supplemental indexes, please visit the [EJScreen website](#).

EJ INDEXES

The EJ indexes help users screen for potential EJ concerns. To do this, the EJ index combines data on low income and people of color populations with a single environmental indicator.

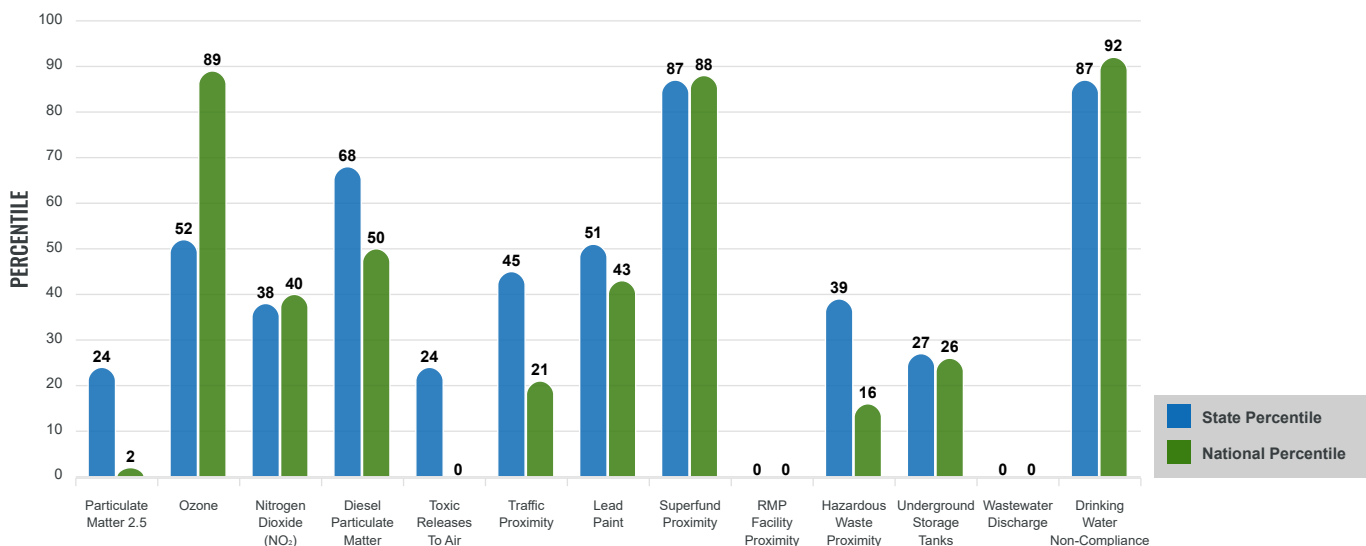
EJ INDEXES FOR THE SELECTED LOCATION



SUPPLEMENTAL INDEXES

The supplemental indexes offer a different perspective on community-level vulnerability. They combine data on percent low income, percent persons with disabilities, percent less than high school education, percent limited English speaking, and percent low life expectancy with a single environmental indicator.

SUPPLEMENTAL INDEXES FOR THE SELECTED LOCATION



Report for 5 miles Ring Centered at 35.616266,-108.589769

Report produced September 24, 2024 using EJScreen Version 2.3

EJScreen Environmental and Socioeconomic Indicators Data

SELECTED VARIABLES	VALUE	STATE AVERAGE	PERCENTILE IN STATE	USA AVERAGE	PERCENTILE IN USA
ENVIRONMENTAL BURDEN INDICATORS					
Particulate Matter 2.5 (µg/m ³)	4.93	6.11	14	8.45	1
Ozone (ppb)	63.7	65.3	31	61.8	65
Nitrogen Dioxide (NO ₂) (ppbv)	4.8	8.1	23	7.8	21
Diesel Particulate Matter (µg/m ³)	0.0963	0.187	44	0.191	27
Toxic Releases to Air (toxicity-weighted concentration)	0	29	13	4,600	0
Traffic Proximity (daily traffic count/distance to road)	52,000	730,000	29	1,700,000	12
Lead Paint (% Pre-1960 Housing)	0.048	0.19	36	0.3	26
Superfund Proximity (site count/km distance)	0.14	0.34	71	0.39	66
RMP Facility Proximity (facility count/km distance)	0	0.2	0	0.57	0
Hazardous Waste Proximity (facility count/km distance)	0.031	1.2	36	3.5	15
Underground Storage Tanks (count/km ²)	3.6E-05	2.8	27	3.6	26
Wastewater Discharge (toxicity-weighted concentration/m distance)	0	990000	0	700000	0
Drinking Water Non-Compliance (points)	0.47	5.6	73	2.2	75
SOCIOECONOMIC INDICATORS					
Demographic Index USA	3.33	N/A	N/A	1.34	98
Supplemental Demographic Index USA	2.44	N/A	N/A	1.64	88
Demographic Index State	3.72	2.16	97	N/A	N/A
Supplemental Demographic Index State	2.2	1.62	81	N/A	N/A
People of Color	100%	62%	97	40%	97
Low Income	74%	39%	92	30%	95
Unemployment Rate	10%	6%	76	6%	81
Limited English Speaking Households	8%	6%	75	5%	82
Less Than High School Education	23%	14%	79	11%	85
Under Age 5	7%	5%	72	5%	69
Over Age 64	8%	20%	16	18%	19

*Diesel particulate matter index is from the EPA's Air Toxics Data Update, which is the Agency's ongoing, comprehensive evaluation of air toxics in the United States. This effort aims to prioritize air toxics, emission sources, and locations of interest for further study. It is important to remember that the air toxics data presented here provide broad estimates of health risks over geographic areas of the country, not definitive risks to specific individuals or locations. More information on the Air Toxics Data Update can be found at: <https://www.epa.gov/haps/air-toxics-data-update>.

Sites reporting to EPA within defined area:

Superfund	1
Hazardous Waste, Treatment, Storage, and Disposal Facilities	0
Water Dischargers	5
Air Pollution	0
Brownfields	0
Toxic Release Inventory	0

Other community features within defined area:

Schools	0
Hospitals	0
Places of Worship	0

Other environmental data:

Air Non-attainment	No
Impaired Waters	Yes

Selected location contains American Indian Reservation Lands*	Yes
Selected location contains a "Justice40 (CEJST)" disadvantaged community	Yes
Selected location contains an EPA IRA disadvantaged community	Yes

*Report for 5 miles Ring Centered at 35.616266,-108.589769
Report produced September 24, 2024 using EJScreen Version 2.3*

EJScreen Environmental and Socioeconomic Indicators Data

HEALTH INDICATORS

INDICATOR	VALUE	STATE AVERAGE	STATE PERCENTILE	US AVERAGE	US PERCENTILE
Low Life Expectancy	23%	19%	83	20%	81
Heart Disease	9.4	5.9	97	5.8	96
Asthma	16.3	11.2	99	10.3	99
Cancer	5.2	6.1	30	6.4	25
Persons with Disabilities	12.4%	17.1%	25	13.7%	47

CLIMATE INDICATORS

INDICATOR	VALUE	STATE AVERAGE	STATE PERCENTILE	US AVERAGE	US PERCENTILE
Flood Risk	2%	9%	31	12%	22
Wildfire Risk	0%	58%	0	14%	0

CRITICAL SERVICE GAPS

INDICATOR	VALUE	STATE AVERAGE	STATE PERCENTILE	US AVERAGE	US PERCENTILE
Broadband Internet	63%	20%	96	13%	99
Lack of Health Insurance	18%	10%	88	9%	90
Housing Burden	No	N/A	N/A	N/A	N/A
Transportation Access Burden	Yes	N/A	N/A	N/A	N/A
Food Desert	Yes	N/A	N/A	N/A	N/A

Report for 5 miles Ring Centered at 35.616266,-108.589769

Report produced September 24, 2024 using EJScreen Version 2.3

Location: User-specified point center at 35.616266, -108.589769
 Ring (buffer): 5-miles radius
 Description: Section 13 NM0156

Summary of ACS Estimates		2018 - 2022
Population		940
Population Density (per sq. mile)		12
People of Color Population		939
% People of Color Population		100%
Households		244
Housing Units		300
Housing Units Built Before 1950		8
Per Capita Income		13,661
Land Area (sq. miles) (Source: SF1)		76.50
% Land Area		100%
Water Area (sq. miles) (Source: SF1)		0.02
% Water Area		0%

	2018 - 2022 ACS Estimates	Percent	MOE (±)
Population by Race			
Total	940	100%	573
Population Reporting One Race	931	99%	909
White	1	0%	47
Black	4	0%	43
American Indian	926	99%	588
Asian	0	0%	13
Pacific Islander	0	0%	13
Some Other Race	0	0%	205
Population Reporting Two or More Races	9	1%	204
Total Hispanic Population	23	2%	369
Total Non-Hispanic Population	917		
White Alone	1	0%	44
Black Alone	3	0%	38
American Indian Alone	905	96%	588
Non-Hispanic Asian Alone	0	0%	13
Pacific Islander Alone	0	0%	13
Other Race Alone	0	0%	13
Two or More Races Alone	9	1%	27
Population by Sex			
Male	396	42%	272
Female	544	58%	380
Population by Age			
Age 0-4	65	7%	211
Age 0-17	268	28%	257
Age 18+	672	72%	370
Age 65+	78	8%	142

Data Note: Detail may not sum to totals due to rounding. Hispanic population can be of any race.

N/A means not available. **Source:** U.S. Census Bureau, American Community Survey (ACS) 2018 - 2022

Location: User-specified point center at 35.616266, -108.589769
 Ring (buffer): 5-miles radius
 Description: Section 13 NM0156

	2018 - 2022 ACS Estimates	Percent	MOE (±)
Population 25+ by Educational Attainment			
Total	574	100%	452
Less than 9th Grade	34	6%	104
9th - 12th Grade, No Diploma	98	17%	93
High School Graduate	220	38%	255
Some College, No Degree	130	23%	215
Associate Degree	63	11%	45
Bachelor's Degree or more	29	5%	52
Population Age 5+ Years by Ability to Speak English			
Total	875	100%	522
Speak only English	394	45%	293
Non-English at Home ¹⁺²⁺³⁺⁴	481	55%	352
¹ Speak English "very well"	391	45%	284
² Speak English "well"	70	8%	76
³ Speak English "not well"	15	2%	109
⁴ Speak English "not at all"	6	1%	45
³⁺⁴ Speak English "less than well"	21	2%	118
²⁺³⁺⁴ Speak English "less than very well"	91	10%	140
Limited English Speaking Households*			
Total	20	100%	28
Speak Spanish	0	0%	13
Speak Other Indo-European Languages	0	0%	13
Speak Asian-Pacific Island Languages	0	0%	13
Speak Other Languages	20	100%	17
Households by Household Income			
Household Income Base	244	100%	98
< \$15,000	75	31%	76
\$15,000 - \$25,000	40	17%	23
\$25,000 - \$50,000	40	17%	76
\$50,000 - \$75,000	32	13%	79
\$75,000 +	57	23%	93
Occupied Housing Units by Tenure			
Total	244	100%	98
Owner Occupied	188	77%	108
Renter Occupied	56	23%	84
Employed Population Age 16+ Years			
Total	698	100%	510
In Labor Force	332	48%	339
Civilian Unemployed in Labor Force	33	10%	45
Not In Labor Force	366	52%	259

Data Note: Detail may not sum to totals due to rounding. Hispanic population can be of anyrace.

N/A means not available. **Source:** U.S. Census Bureau, American Community Survey (ACS)

*Households in which no one 14 and over speaks English "very well" or speaks English only.

Location: User-specified point center at 35.616266, -108.589769

Ring (buffer): 5-miles radius

Description: Section 13 NM0156

	2018 - 2022 ACS Estimates	Percent	MOE (±)
Population by Language Spoken at Home*			
Total (persons age 5 and above)	2,052	100%	300
English	929	45%	257
Spanish	0	0%	13
French, Haitian, or Cajun	0	0%	13
German or other West Germanic	0	0%	13
Russian, Polish, or Other Slavic	0	0%	13
Other Indo-European	0	0%	13
Korean	0	0%	13
Chinese (including Mandarin, Cantonese)	0	0%	13
Vietnamese	0	0%	13
Tagalog (including Filipino)	0	0%	13
Other Asian and Pacific Island	0	0%	13
Arabic	0	0%	13
Other and Unspecified	1,123	55%	195
Total Non-English	1,123	55%	395

Data Note: Detail may not sum to totals due to rounding. Hispanic population can be of any race.
N/A means not available. **Source:** U.S. Census Bureau, American Community Survey (ACS) 2018 - 2022.
*Population by Language Spoken at Home is available at the census tract summary level and up.