

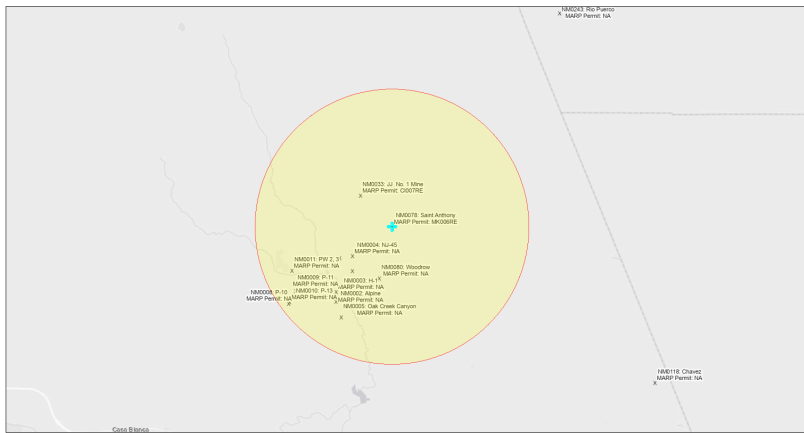


EJScreen Community Report

This report provides environmental and socioeconomic information for user-defined areas, and combines that data into environmental justice and supplemental indexes.

Saint Anthony NM0078

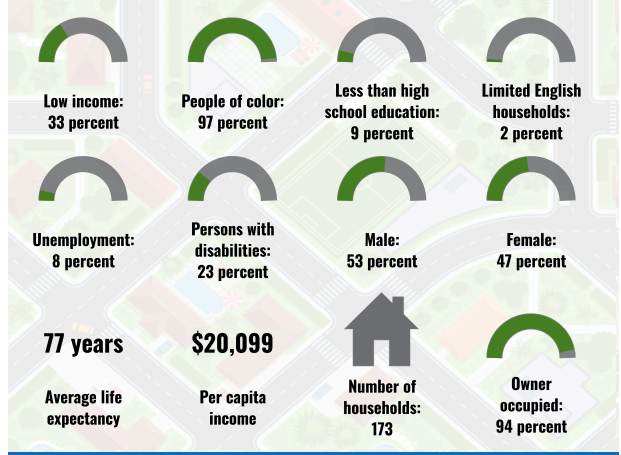
5 miles Ring Centered at 35.159094,-107.306149
 Population: 652
 Area in square miles: 78.53



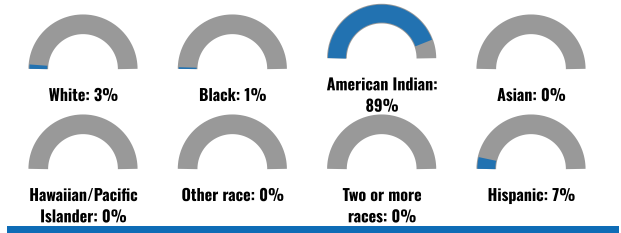
September 19, 2024
 Saint Anthony NM0078
 Abandoned Uranium Mines

1:144,448
 Bureau of Land Management, Esri, HERE, Garmin, IGN, NAVI, NPS, TomTom, Swire, and National Resources Department, Esri, HERE, IHS, NPS

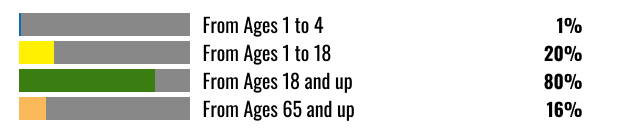
COMMUNITY INFORMATION



BREAKDOWN BY RACE



BREAKDOWN BY AGE



LIMITED ENGLISH SPEAKING BREAKDOWN



LANGUAGES SPOKEN AT HOME

LANGUAGE	PERCENT
No language data available.	

Notes: Numbers may not sum to totals due to rounding. Hispanic population can be of any race. Source: U.S. Census Bureau American Community Survey (ACS) 2018-2022. Life expectancy data comes from the Centers for Disease Control.

Report for 5 miles Ring Centered at 35.159094,-107.306149
 Report produced September 19, 2024 using EJScreen Version 2.3

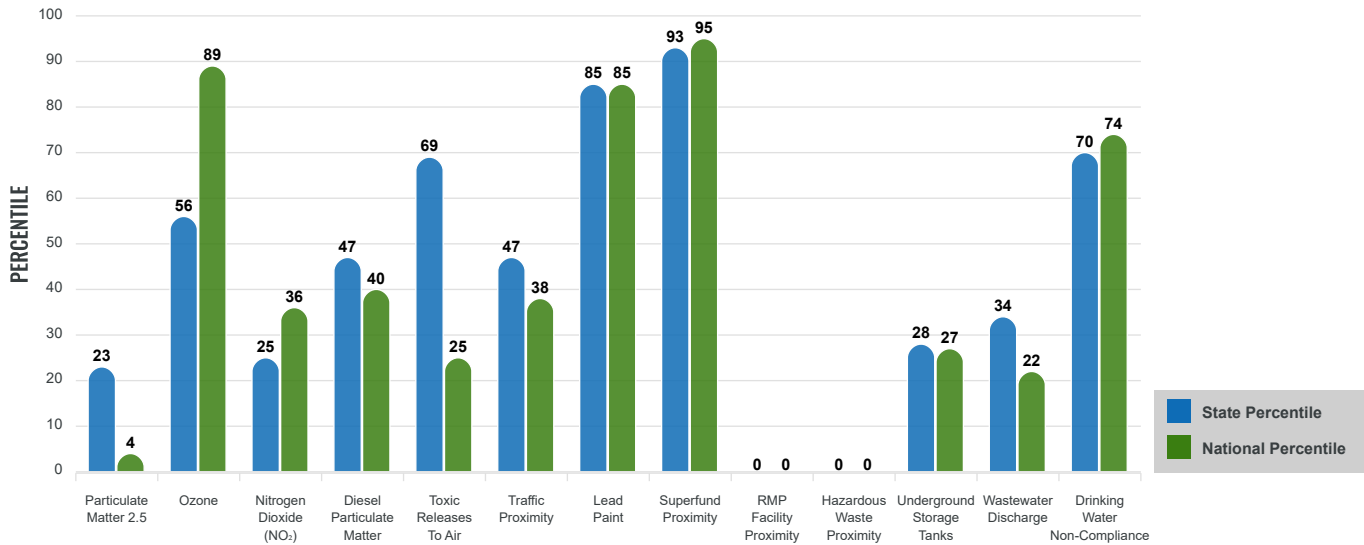
Environmental Justice & Supplemental Indexes

The environmental justice and supplemental indexes are a combination of environmental and socioeconomic information. There are thirteen EJ indexes and supplemental indexes in EJScreen reflecting the 13 environmental indicators. The indexes for a selected area are compared to those for all other locations in the state or nation. For more information and calculation details on the EJ and supplemental indexes, please visit the [EJScreen website](#).

EJ INDEXES

The EJ indexes help users screen for potential EJ concerns. To do this, the EJ index combines data on low income and people of color populations with a single environmental indicator.

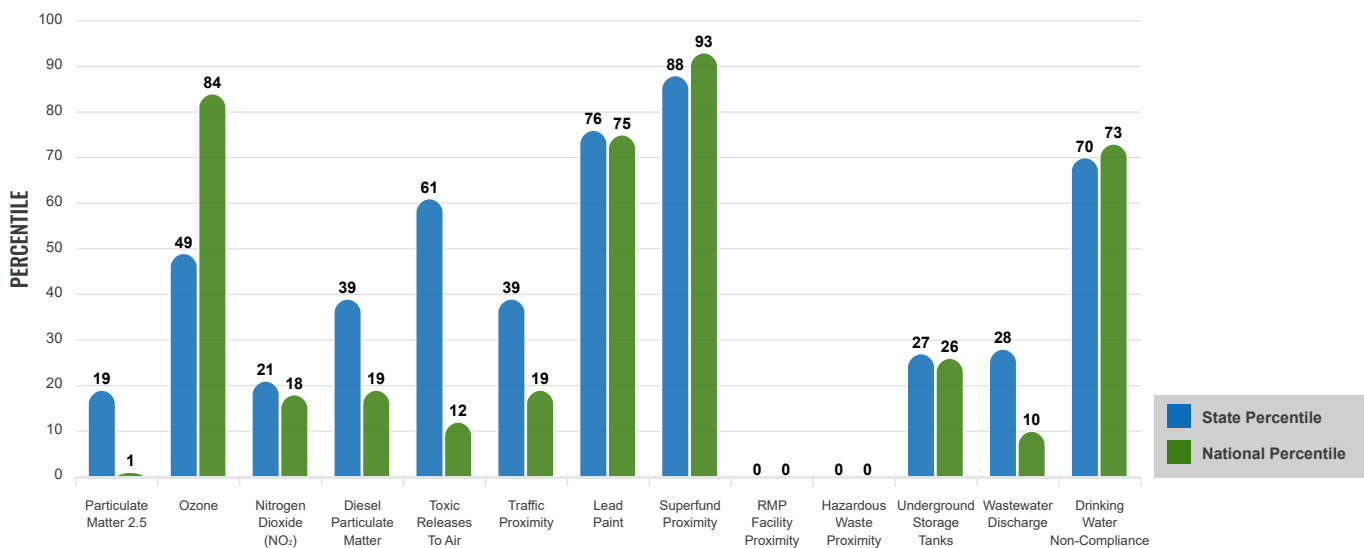
EJ INDEXES FOR THE SELECTED LOCATION



SUPPLEMENTAL INDEXES

The supplemental indexes offer a different perspective on community-level vulnerability. They combine data on percent low income, percent persons with disabilities, percent less than high school education, percent limited English speaking, and percent low life expectancy with a single environmental indicator.

SUPPLEMENTAL INDEXES FOR THE SELECTED LOCATION



Report for 5 miles Ring Centered at 35.159094,-107.306149

Report produced September 19, 2024 using EJScreen Version 2.3

EJScreen Environmental and Socioeconomic Indicators Data

SELECTED VARIABLES	VALUE	STATE AVERAGE	PERCENTILE IN STATE	USA AVERAGE	PERCENTILE IN USA
ENVIRONMENTAL BURDEN INDICATORS					
Particulate Matter 2.5 (µg/m ³)	4.96	6.11	15	8.45	1
Ozone (ppb)	64.9	65.3	38	61.8	70
Nitrogen Dioxide (NO ₂) (ppbv)	3.7	8.1	15	7.8	11
Diesel Particulate Matter (µg/m ³)	0.064	0.187	31	0.191	13
Toxic Releases to Air (toxicity-weighted concentration)	9.6	29	51	4,600	8
Traffic Proximity (daily traffic count/distance to road)	67,000	730,000	32	1,700,000	14
Lead Paint (% Pre-1960 Housing)	0.34	0.19	76	0.3	61
Superfund Proximity (site count/km distance)	3	0.34	97	0.39	97
RMP Facility Proximity (facility count/km distance)	0	0.2	0	0.57	0
Hazardous Waste Proximity (facility count/km distance)	0	1.2	0	3.5	0
Underground Storage Tanks (count/km ²)	7.7E-05	2.8	27	3.6	26
Wastewater Discharge (toxicity-weighted concentration/m distance)	0.00017	990000	24	700000	8
Drinking Water Non-Compliance (points)	3.5	5.6	84	2.2	89
SOCIOECONOMIC INDICATORS					
Demographic Index USA	2.32	N/A	N/A	1.34	84
Supplemental Demographic Index USA	1.98	N/A	N/A	1.64	73
Demographic Index State	2.74	2.16	71	N/A	N/A
Supplemental Demographic Index State	1.7	1.62	58	N/A	N/A
People of Color	97%	62%	93	40%	94
Low Income	33%	39%	41	30%	60
Unemployment Rate	8%	6%	70	6%	76
Limited English Speaking Households	1%	6%	46	5%	60
Less Than High School Education	9%	14%	46	11%	56
Under Age 5	1%	5%	25	5%	19
Over Age 64	16%	20%	43	18%	48

*Diesel particulate matter index is from the EPA's Air Toxics Data Update, which is the Agency's ongoing, comprehensive evaluation of air toxics in the United States. This effort aims to prioritize air toxics, emission sources, and locations of interest for further study. It is important to remember that the air toxics data presented here provide broad estimates of health risks over geographic areas of the country, not definitive risks to specific individuals or locations. More information on the Air Toxics Data Update can be found at: <https://www.epa.gov/haps/air-toxics-data-update>.

Sites reporting to EPA within defined area:

Superfund	1
Hazardous Waste, Treatment, Storage, and Disposal Facilities	0
Water Dischargers	8
Air Pollution	0
Brownfields	0
Toxic Release Inventory	0

Other community features within defined area:

Schools	0
Hospitals	0
Places of Worship	0

Other environmental data:

Air Non-attainment	No
Impaired Waters	Yes

Selected location contains American Indian Reservation Lands*	Yes
Selected location contains a "Justice40 (CEJST)" disadvantaged community	Yes
Selected location contains an EPA IRA disadvantaged community	Yes

Report for 5 miles Ring Centered at 35.159094,-107.306149
 Report produced September 19, 2024 using EJScreen Version 2.3

EJScreen Environmental and Socioeconomic Indicators Data

HEALTH INDICATORS

INDICATOR	VALUE	STATE AVERAGE	STATE PERCENTILE	US AVERAGE	US PERCENTILE
Low Life Expectancy	22%	19%	76	20%	75
Heart Disease	8.3	5.9	93	5.8	91
Asthma	13.7	11.2	93	10.3	97
Cancer	6.4	6.1	62	6.4	49
Persons with Disabilities	22.8%	17.1%	82	13.7%	91

CLIMATE INDICATORS

INDICATOR	VALUE	STATE AVERAGE	STATE PERCENTILE	US AVERAGE	US PERCENTILE
Flood Risk	10%	9%	67	12%	65
Wildfire Risk	57%	58%	40	14%	86

CRITICAL SERVICE GAPS

INDICATOR	VALUE	STATE AVERAGE	STATE PERCENTILE	US AVERAGE	US PERCENTILE
Broadband Internet	65%	20%	97	13%	99
Lack of Health Insurance	16%	10%	83	9%	86
Housing Burden	No	N/A	N/A	N/A	N/A
Transportation Access Burden	Yes	N/A	N/A	N/A	N/A
Food Desert	No	N/A	N/A	N/A	N/A

Report for 5 miles Ring Centered at 35.159094,-107.306149

Report produced September 19, 2024 using EJScreen Version 2.3

Location: User-specified point center at 35.159094, -107.306149
 Ring (buffer): 5-miles radius
 Description: Saint Anthony NM0078

Summary of ACS Estimates		2018 - 2022
Population		652
Population Density (per sq. mile)		7
People of Color Population		635
% People of Color Population		97%
Households		173
Housing Units		213
Housing Units Built Before 1950		66
Per Capita Income		20,099
Land Area (sq. miles) (Source: SF1)		95.43
% Land Area		100%
Water Area (sq. miles) (Source: SF1)		0.09
% Water Area		0%

	2018 - 2022 ACS Estimates	Percent	MOE (±)
Population by Race			
Total	652	100%	639
Population Reporting One Race	644	99%	1,284
White	35	5%	377
Black	9	1%	196
American Indian	597	92%	636
Asian	0	0%	13
Pacific Islander	0	0%	13
Some Other Race	3	0%	49
Population Reporting Two or More Races	8	1%	162
Total Hispanic Population	44	7%	449
Total Non-Hispanic Population	607		
White Alone	17	3%	141
Black Alone	9	1%	196
American Indian Alone	580	89%	627
Non-Hispanic Asian Alone	0	0%	13
Pacific Islander Alone	0	0%	13
Other Race Alone	0	0%	13
Two or More Races Alone	0	0%	77
Population by Sex			
Male	343	53%	410
Female	309	47%	342
Population by Age			
Age 0-4	9	1%	72
Age 0-17	132	20%	186
Age 18+	519	80%	419
Age 65+	102	16%	203

Data Note: Detail may not sum to totals due to rounding. Hispanic population can be of any race.

N/A means not available. **Source:** U.S. Census Bureau, American Community Survey (ACS) 2018 - 2022

Location: User-specified point center at 35.159094, -107.306149
 Ring (buffer): 5-miles radius
 Description: Saint Anthony NM0078

	2018 - 2022 ACS Estimates	Percent	MOE (±)
Population 25+ by Educational Attainment			
Total	453	100%	401
Less than 9th Grade	21	5%	63
9th - 12th Grade, No Diploma	21	5%	107
High School Graduate	227	50%	270
Some College, No Degree	111	25%	186
Associate Degree	68	15%	105
Bachelor's Degree or more	5	1%	89
Population Age 5+ Years by Ability to Speak English			
Total	642	100%	627
Speak only English	237	37%	409
Non-English at Home ¹⁺²⁺³⁺⁴	406	63%	392
¹ Speak English "very well"	380	59%	381
² Speak English "well"	18	3%	81
³ Speak English "not well"	7	1%	51
⁴ Speak English "not at all"	0	0%	45
³⁺⁴ Speak English "less than well"	7	1%	68
²⁺³⁺⁴ Speak English "less than very well"	26	4%	106
Limited English Speaking Households*			
Total	3	100%	64
Speak Spanish	0	0%	13
Speak Other Indo-European Languages	0	0%	13
Speak Asian-Pacific Island Languages	0	0%	13
Speak Other Languages	3	100%	60
Households by Household Income			
Household Income Base	173	100%	240
< \$15,000	41	24%	98
\$15,000 - \$25,000	3	2%	70
\$25,000 - \$50,000	52	30%	140
\$50,000 - \$75,000	20	11%	213
\$75,000 +	57	33%	124
Occupied Housing Units by Tenure			
Total	173	100%	240
Owner Occupied	163	94%	163
Renter Occupied	10	6%	204
Employed Population Age 16+ Years			
Total	529	100%	488
In Labor Force	256	48%	398
Civilian Unemployed in Labor Force	21	8%	104
Not In Labor Force	273	52%	295

Data Note: Detail may not sum to totals due to rounding. Hispanic population can be of anyrace.

N/A means not available. **Source:** U.S. Census Bureau, American Community Survey (ACS)

*Households in which no one 14 and over speaks English "very well" or speaks English only.

Location: User-specified point center at 35.159094, -107.306149

Ring (buffer): 5-miles radius

Description: Saint Anthony NM0078

	2018 - 2022 ACS Estimates	Percent	MOE (±)
Population by Language Spoken at Home*			
Total (persons age 5 and above)	N/A	N/A	N/A
English	N/A	N/A	N/A
Spanish	N/A	N/A	N/A
French, Haitian, or Cajun	N/A	N/A	N/A
German or other West Germanic	N/A	N/A	N/A
Russian, Polish, or Other Slavic	N/A	N/A	N/A
Other Indo-European	N/A	N/A	N/A
Korean	N/A	N/A	N/A
Chinese (including Mandarin, Cantonese)	N/A	N/A	N/A
Vietnamese	N/A	N/A	N/A
Tagalog (including Filipino)	N/A	N/A	N/A
Other Asian and Pacific Island	N/A	N/A	N/A
Arabic	N/A	N/A	N/A
Other and Unspecified	N/A	N/A	N/A
Total Non-English	N/A	N/A	N/A

Data Note: Detail may not sum to totals due to rounding. Hispanic population can be of any race.
 N/A means not available. **Source:** U.S. Census Bureau, American Community Survey (ACS) 2018 - 2022.
 *Population by Language Spoken at Home is available at the census tract summary level and up.