

**NEW MEXICO ENVIRONMENT DEPARTMENT
GROUND WATER QUALITY BUREAU**



**PUBLIC INVOLVEMENT PLAN
(PIP)**

Facility Name: S & R Septic

Facility Location: Tune Drive, Taos NM
Section 26, Township 26N, Range 12E

County: Taos County

Responsible Party: Steve/Loretta Rael
PO Box 3155
Rancho de Taos NM 87577

Agency: Ground Water Quality Bureau
Pollution Prevention Section

GWQB Action: Permitting - Renewal
DP-465

Bureau Contact: Jason Herman, Environmental Scientist
(505) 827-2713
Jason.herman@state.nm.us

EFFECTIVE DATE: September 26, 2018

REVISION DATE: N/A

/s/ Michelle Hunter

Michelle Hunter
Chief, Ground Water Quality Bureau

Element 1 – Public Involvement Plan (PIP) Overview

The New Mexico Environment Department (NMED or Department), Ground Water Quality Bureau (Bureau) has developed this PIP for the application for discharge permit renewal for the disposal facility. The groundwater discharge permit for this facility is referred to as DP-465.

The purpose of this PIP is to plan for providing public participation opportunities and information that may be needed for the community to participate in the permitting process for this facility. This PIP identifies information about the community and resources needed by the Bureau to incorporate community participation activities into the decision-making process. This PIP is developed in accordance with the Department's *Public Participation Policy* (Policy 07-13 or Policy), and incorporates the requirements of the Policy, as well as applicable regulatory and statutory public participation requirements.

This PIP implements the “elements” set forth in the Policy. Those elements include:

1. An overview of the Public Involvement Plan for the community affected by the activity
2. Bureau contact names and contact information, specifically for Limited English Proficiency (LEP) language assistance services (e.g., translation, interpreters) or for disability accommodations
3. A summary of the regulatory public participation framework associated with discharge permits
4. A description of community/stakeholder groups based on results of a preliminary environmental justice (EJ) screening
5. Details about planned public outreach activities

In developing this PIP, community participation needs were assessed to ensure appropriate public outreach. This was accomplished by identifying whether there is a combination of environmental and demographic factors that may impact public participation (e.g., low income community, minority community, LEP individuals, linguistically isolated households). Because the community located near S & R Septic includes a significant percentage of Spanish speakers, the Bureau will provide appropriate information in both English and Spanish.

Public involvement associated with discharge permits occurs at different stages and in different forms. Public involvement activities required by statute or regulation are mandatory and subject to statutory or regulatory deadlines. Mandatory public involvement activities and associated time requirements relevant to this PIP are noted in the *Table of Mandated Public Involvement Activities* at the back of this PIP.

The Bureau plans to conduct the public involvement activities related to the permitting process outlined in the *Table of Public Involvement Activities* below. The activity timeline and dates are tentative and subject to change.

Table of Public Involvement Activities

Activity	Date
<p>Public Notice One (PN-1) See <i>Table of Mandated Public Involvement Activities</i> at the end of this PIP for details. All materials are being provided in English and Spanish, beyond regulatory requirement.</p>	<p>June 2018</p>
<p>Placement of a hardcopy of the PIP in the local field office: Taos Field Office 145 Roy Rd. Suite B Taos, NM 87571 (575) 758-8808</p>	<p>September 2018 (anticipated)</p>
<p>Notice of availability of draft permit (PN-2) See <i>Table of Mandated Public Involvement Activities</i>. Being provided in English and Spanish, beyond regulatory requirement.</p>	<p>October 2018 (anticipated)</p>

All notices for upcoming meetings or hearings will include a statement that any person who requires assistance, an interpreter, or an auxiliary aid to participate in the process may contact a specifically identified Department person to request those services. Requested interpretation services during the meeting and accommodations or services for persons with disabilities will be arranged to the extent possible.

This PIP is a “living” document that may be amended for numerous reasons, including the consideration of public comments and feedback.

Element 2 – Bureau Contact Information

PIP Specific Contacts

The Bureau contact for this discharge permit is:

Jason Herman, Environmental Scientist
 NMED Ground Water Quality Bureau
 P.O. Box 5469
 Santa Fe, New Mexico 87502-5469
 505-827-2713
 Jason.herman@state.nm.us

Non-English Language Speaker Assistance

All public notices will contain a statement that non-English speakers may call the Bureau contact listed above and request language assistance in order to learn more about this permit or the permitting process. Arrangements may be made for document translation or interpretation related to the permitting process as necessary and as resources allow.

Individuals with Disabilities Assistance

All public notices will contain a statement that disabled individuals may call the Bureau contact listed above and request assistance needed to participate in activities associated with the permitting process.

The following numbers will be provided in public notices so that hearing-impaired callers can contact the Bureau and ask questions about the activity or proceeding: Toll-free numbers are available for TDD or TTY users to access the New Mexico Relay network (for deaf or hearing-impaired callers), 1-800-659-1779; TTY users: 1-800-659-8331.

Websites

Outreach materials and notices will include links to the following websites:

Ground Water Quality Bureau – <https://www.env.nm.gov/gwqb/>
New Mexico Environment Department - <https://www.env.nm.gov/>

Element 3 – Regulatory Framework for Public Participation Related to the Permitting Process

The public participation regulatory framework associated with the permitting process is identified in the *Table of Mandated Public Involvement Activities* at the end of this PIP. The Table identifies activities subject to statutory or regulatory deadlines, the associated regulatory requirements, and the associated dates or time periods.

Element 4 – Description of Community/Stakeholder Groups Based on the EJSCREEN

EJSCREEN Summary

To provide for adequate public participation opportunities and meaningful involvement of persons in the permitting process, the affected communities must first be identified, informed about proposed environmental actions affecting the community, and invited to share their comments and concerns. The EJSCREEN tool developed by the U.S. Environmental Protection Agency (EPA) helps identify communities that are low income, have minority populations, and have limited English proficiency that may benefit from a variety of approaches for notification and outreach communication. This information is used to help plan for the community's involvement in the public process for environmental activities or actions. In addition to the EJSCREEN results, the

Bureau may consider additional information such as the U.S. Census Bureau website or NMED’s EJ Mapping Tool.

The Bureau considers the affected community to be those persons living within the geographic area depicted on the attached EJSCREEN document that includes the discharge site. The results of the EJSCREEN American Community Survey (ACS) Summary Report (attached to this PIP) are summarized in the table below.

EJSCREEN Results for the Affected Community

Total population	3,583
Total number of households	1,414
Percentage minority population	53%
Percentage Hispanic Population	52%
Percentage of the population by race	Population reporting one race: White: 74% American Indian: 1% Other Race: 24%
Total number of persons over the age of five who speak English “less than very well”	165
Percentage of persons over the age of five who speak English “less than very well”	5%
Total number of linguistically isolated households	66
Percentage of linguistically isolated households (Total number of linguistically isolated households ÷ total number of households X 100)	4.6%
Languages by percentage in linguistically isolated households	Spanish: 98% Other Indo-European languages: 2%
Percent linguistically isolated population, New Mexico*:	5.4%
Per capita income	\$23,571
Per capita income, USA**	\$29,979

* U.S. Census Bureau. 2011-2015 American Community Survey 5-Year Estimates, Table S1602. Limited English Speaking Households. https://factfinder.census.gov/bkmk/table/1.0/en/ACS/15_5YR/S1602/0400000US35 (date of access: 7/26/2018).

** U.S. Census Bureau. 2015 American Community Survey 1-Year Estimates, Table S0201. Selected Population Profile in the United States. https://factfinder.census.gov/bkmk/table/1.0/en/ACS/15_1YR/S0201/0100000US (date of access: 7/26/2018).

The EJSCREEN results indicate that for the affected community the proportion of the population with limited English proficiency (LEP) is significant. The Bureau has therefore performed a LEP assessment for the community and attaches that assessment to this PIP.

The history of public participation for this discharge permit indicates there is **considerable** public interest in the permitting process. The Bureau maintains a facility-specific mailing list. The current list includes 20 persons or entities, including the Stagecoach Neighborhood Association.

Because the affected community has a significant percentage of persons with difficulties communicating in English, the Bureau will consider the language and communication needs of this community when conducting public outreach and participation activities. To accomplish this the Bureau will provide the same information in Spanish as in English in public comment notices, public meeting notices, and other announcements (e.g., radio broadcasts, brochures, signs, postcards) and will strive to make public participation efforts as inclusive as possible within the Bureau's budget and time limitations. See Element 5 for more specifics on the public outreach and participation activities.

Element 5 – Detailed Actions and Outreach Activities with the Affected Public

Public involvement activities required by statute or regulation for this permitting action are listed in the *Table of Mandated Public Involvement Activities* at the end of this document.

Public Participation – Outreach Activities

The Bureau will conduct the following outreach activities during this permitting process:

- Placement of this PIP on the Bureau website and in nearby NMED field office
- Postal mailing and email notices
- Newspaper notices
- Notice posted on NMED website
- Public meetings

Newspapers utilized in the notification process include:

- Statewide circulation (English): Albuquerque Journal
- Local circulation (English and Spanish): The Taos News - Taos County

Local, state, and federal government agencies, tribal entities, and land grant officials will be notified about the permitting process. A list of the agencies and officials notified can be provided upon request.

Indian tribes, pueblos and nations will be notified about the permitting action through the contacts maintained by the Indian Affairs Department at the following URLs:

<http://www.iad.state.nm.us/apaches.html>

<http://www.iad.state.nm.us/navajo.html>

<http://www.iad.state.nm.us/pueblos.html>

Staff have requested that the Department's Tribal Liaison send a courtesy email to the environmental director or manager for the affected Tribes, Pueblos and Nations, particularly the Taos Pueblo, which has land near the discharge site.

Timelines and methods for submitting public comments are specified in the *Table of Mandated Public Involvement Activities*. Final discharge permit documents will be available from the Bureau's contact identified in Element 2 of this PIP.

Postal Mailing or E-Mailing of Notices to Persons on the Facility-Specific Mailing List

The Bureau solicits the names and contact information of interested parties with all public notices. The Bureau maintains those names on a Facility-Specific Mailing List and provides the individuals with information about regulatory activities for the facility. Individuals, organizations, and other interested parties are added to the mailing list as requested. All public notices will contain a statement directing interested individuals to contact the Bureau contact for this permit if they want to be added to the facility specific mailing list. The Department also maintains a more comprehensive list of persons requesting copies of all notices issued by the agency. Public notices will also contain a statement informing interested individuals that they can subscribe to this list by visiting <https://www.env.nm.gov/email-update-bulletins/>.

Other means of outreach such as fliers announcing public comment periods and/or public meetings or hearings may be posted in locations throughout the community (e.g., local businesses, schools, libraries) and on the Department's website, at the Bureau's discretion after consideration of public interest and input.

Attachments

The following documents are attached to this PIP:

- A copy of the EJSCREEN ACS Summary Report, and a map showing the area evaluated
- A copy of the public notice with facility and permit specific information in all published languages
- LEP Assessment

Table of Mandated Public Involvement Activities

Activity	Dates
<p>Application Notice (PN-1): The first notice of the Bureaus receipt of the permit application – applicant’s obligations at 20.6.2.3108.B – Bureau’s obligations at 20.6.2.3108.E NMAC</p> <ul style="list-style-type: none"> • Newspaper ads (English and Spanish)- Applicant obligation • NMED website https://www.env.nm.gov/gwqb/public-notice/ • Notice to government agencies • Notice to interested parties 	<p>Within 30 days of the department deeming the application administratively complete</p>
<p>Permit Notice (PN-2): Notice to the public of the availability of a draft permit for a 30-day review and comment period – the notice will outline the process for requesting a public hearing – obligation at 20.6.2.3108.H NMAC</p> <ul style="list-style-type: none"> • NMED website https://www.env.nm.gov/gwqb/public-notice/ • Newspaper ads • Notification of interested parties • Notice to government agencies • Notice to Indian Tribes, Pueblos and Nations 	<p>Within 60 days of the department determining the application is technically complete and drafting a permit.</p>
<p>Public Hearing Notice (if required): Upon the Department’s determination that there is substantial public interest in the permit – obligation at 20.6.2.3108.L NMAC. Notice includes information on how to participate in the hearing, and how to request an interpreter or auxiliary aid if needed.</p> <ul style="list-style-type: none"> • NMED website https://www.env.nm.gov/gwqb/public-notice/ • Newspapers • Notice to interested parties • Notice to government agencies • Notice to Indian Tribes, Pueblos and Nations 	<p>Notice of the hearing shall occur at least 30 days prior to the hearing.</p>

Limited English Proficiency (LEP) Assessment

Facility: S & R Septic
Location: Tune Drive, Taos
Regulatory Action: Renewal
Buffer Distance: 4-mile radius (i.e., area evaluated or Community of Concern)
Date: July 24, 2018

Factor 1: The Number and Proportion of LEP Individuals Eligible to be Served or Likely to be Encountered in Community of Concern

See Public Involvement Plan (PIP), Table of EJSCREEN Results for the Affected Community.

Conclusions:

1. The number of LEP individuals (persons over the age of 5 who speak English “less than very well” in the affected community) is 165.
2. The percentage of LEP individuals in the affected community is 5%.
3. The percentage of linguistically isolated households is 4.6%, which is less than the statewide average.
4. Spanish is the predominant non-English language spoken by LEP persons.
5. Historical participation: The Bureau maintains a facility-specific mailing list. The current mailing list for the facility includes 20 persons. A review of the administrative record for this facility indicates considerable public interest/participation overall during the past 10 years. The review found a limited record of participation by the LEP community.

Factor 2: Frequency with which LEP Individuals Might Come in Contact with the Program

Contact with the discharge permitting process primarily occurs when a permit application is under review. The GWQB provides notice to the public and encourages participation. Individuals may participate by requesting information, submitting comments on draft permits, requesting hearings, and taking part in hearings. Some permits generate considerable public interest, but participation is low for most permits. Historical participation in permitting activities for this facility is summarized under Factor 1.

Conclusion:

Although LEP participation has been limited, given the demographics of the area and the considerable overall public interest in this facility, the Bureau considers the potential for LEP contact with the permitting process to be “occasional”.

Factor 3: Nature and Importance of the Activity or Service Provided by the Program

The permitting activity is deemed by the GWQB to be "important" to NMED, the impacted community, and the State of New Mexico. The permitting activity is important to NMED because the permit establishes site-specific requirements that must be met to ensure protection of public health and groundwater quality and provides a means to enforce those requirements. The permitting activity is important to the impacted community because poorly-operated waste treatment facilities have the potential to pose a public nuisance and adversely affect the quality of life of people living in the vicinity of the facility. The permitting activity is important to the State of New Mexico because establishment of effective permits ensures that discharges will not impact the State's limited groundwater resources and that waste disposal is conducted in a consistent manner throughout the State.

Conclusion:

The GWQB considers the permitting activity "important" to NMED, to the state as a whole, and to the impacted community.

Factor 4: Resources Available to NMED for LEP Services and Associated Costs

For outreach to LEP communities associated with this permit action, NMED employs an in-house Spanish translator/interpreter and utilizes a phone interpretation service to assist during direct communication between LEP individuals and NMED staff. The costs of newspaper publication of public notice in Spanish and of interpretive services for a public meeting or hearing are being incorporated into the Bureau's budget, to the extent possible. Fees collected from the permittee in accordance with the schedule at 20.6.2.3114 NMAC are not sufficient to cover these costs.

Conclusion:

The Bureau can accommodate the costs of the LEP services identified in this plan. If additional services are requested, the budgetary implications will be reviewed.

LEP Services Plan:

The Bureau plans to:

1. Translate the Public Notice Two and any subsequent public notices into Spanish and publish in a paper serving the local community.
2. Provide interpretive services at any public meeting or public hearing, if requested.
3. Interact with members of the LEP community using certified interpreters, when needed.

The Bureau will consider requests from members of the affected community for additional LEP services.



Permiso de Descarga # 465	Instalaciones S&R Septic		Solicitante Steve Rael S&R Septic PO Box 4890 Rancho de Taos, NM 87557	Contacto para el permiso del NMED Jason Herman Jason.Herman@state.nm.us 505-827-2713
	Ciudad más cercana Taos	Condado Taos		

Aviso: DP-465: S & R Septic propone renovar el Permiso de Descarga para la descarga de hasta 10.000 galones por día de lodo de residuos sépticos domésticos y planta paquete de tratamiento a 13 celdas de eliminación de superficies poco profundas sin revestir con un total de 2.31 acres en una base rotacional y tres celdas de eliminación totalizando 0.46 acres en una base rotacional. Los contaminantes potenciales de este tipo de descarga incluyen compuestos de nitrógeno. La instalación está ubicada en Tune Drive, Taos, en el Antoine Leroux/Antonio Martinez Grant, proyectada en la Sección 26, T26N, R12E, condado de Taos. El agua subterránea que tiene más probabilidad de verse afectada se encuentra a una profundidad de más de 560 pies y tiene una concentración total de sólidos disueltos de aproximadamente 400 miligramos por litro.

Para ver en línea este y otros avisos públicos emitidos por la Oficina de Calidad de las Aguas Subterráneas, visite:
<https://www.env.nm.gov/qwb/NMED-GWQB-PublicNotice.htm>



SUSANA MARTINEZ
Governor

JOHN A. SANCHEZ
Lieutenant Governor

**NEW MEXICO
ENVIRONMENT DEPARTMENT**

Ground Water Quality Bureau

1190 South St. Francis Drive (87505)
P.O. Box 5469, Santa Fe, New Mexico 87502-5469

Phone (505) 827-2900 Fax (505) 827-2965

www.env.nm.gov



BUTCH TONGATE
Cabinet Secretary

J.C. BORREGO
Deputy Secretary

22 de junio de 2018

Solicitudes de Permiso de Descarga Enviadas para Revisión

Por la presente se da aviso de conformidad con 20.6.2.3108 NMAC, las siguientes solicitudes de Permiso de Descarga de Aguas Subterráneas han sido enviadas al Departamento de Medio Ambiente de Nuevo México (NMED, por su sigla en inglés) para su revisión.

Siempre que el solicitante cumpla con los requisitos aplicables, el Departamento de Medio Ambiente de Nuevo México (NMED) propondrá para su aprobación un Permiso de Descarga que contiene limitaciones, requisitos de monitoreo, y otras condiciones destinadas a proteger la calidad del agua subterránea para su uso actual y potencial uso en el futuro. La información en esta notificación pública fue provista por los solicitantes y será verificada por NMED durante el proceso de revisión de solicitudes de permiso. El NMED aceptará comentarios y declaraciones de interés con respecto a las solicitudes y creará listas de correo específicas de las instalaciones para las personas que deseen recibir avisos en el futuro. Las preguntas, comentarios o declaraciones de interés deben dirigirse a la persona de contacto para permisos de NMED, llamando al (505) 827-2900 o a la siguiente dirección: Ground Water Quality Bureau, PO Box 5469, Santa Fe, NM 87502-5469.

El Departamento del Medio Ambiente de Nuevo México (NMED, por su sigla en inglés) no discrimina por motivos de raza, color, origen nacional, discapacidad, edad o sexo en la administración de sus programas o actividades, según lo exigido por las leyes y los reglamentos correspondientes. El NMED es responsable de la coordinación de esfuerzos para el cumplimiento de las reglas y la recepción de indagaciones relativas a los requisitos de no discriminación implementados por 40 C.F.R. Parte 7, que incluye el Título VI de la Ley de Derechos Civiles de 1964, como fuera enmendado; la Sección 504 de la Ley de Rehabilitación de 1973; la Ley de Discriminación por Edad de 1975; el Título IX de las Enmiendas de Educación de 1972; y la Sección 13 de las Enmiendas a la Ley Federal de Control de la Contaminación del Agua de 1972. Si tiene preguntas sobre este aviso o sobre cualquier programa de no discriminación, norma o procedimiento de NMED, puede comunicarse con la Coordinadora de No Discriminación: Kristine Pintado, Non-Discrimination Coordinator, New Mexico Environment Department, 1190 St. Francis Dr., Suite N4050, P.O. Box 5469, Santa Fe, NM 87502, (505) 827-2855, nd.coordinator@state.nm.us. Si piensa que ha sido discriminado con respecto a un programa o actividad de NMED, puede comunicarse con la Coordinadora de No Discriminación antes indicada o visitar nuestro sitio web en <https://www.env.nm.gov/non-employee-discrimination-complaint-page/> para saber cómo y dónde presentar una queja por discriminación.

Sinceramente,

Lochlin Farrell
Oficina para el Control de la Calidad de las Aguas Subterráneas



<u>Discharge Permit #</u> 465	<u>Facility</u> S&R Septic		<u>Applicant</u> Steve Rael S&R Septic PO Box 4890 Rancho de Taos, NM 87557	<u>NMED Permit Contact</u> Jason Herman Jason.Herman@state.nm.us 505-827-2713
	<u>Closest City</u> Taos	<u>County</u> Taos		

Notice: DP-465: S&R Septic proposes to renew the Discharge Permit for the discharge of up to 10,000 gallons per day of domestic septage and package treatment plant sludge to 13 unlined shallow surface disposal cells totaling 2.31 acres on a rotational basis and three disposal cells totaling 0.46 acres on a rotational basis. Potential contaminants from this type of discharge include nitrogen compounds. The facility is located at Tune Drive, Taos, in the Antoine Leroux/Antonio Martinez Grant, projected in Section 26, T26N, R12E, Taos County. Groundwater most likely to be affected is at a depth of more than 560 feet and has a total dissolved solids concentration of 400 milligrams per liter.

To view this and other public notices issued by the Ground Water Quality Bureau on-line, go to:
<https://www.env.nm.gov/qwb/NMED-GWQB-PublicNotice.htm>



**NEW MEXICO
ENVIRONMENT DEPARTMENT**



SUSANA MARTINEZ
Governor

JOHN A. SANCHEZ
Lieutenant Governor

Ground Water Quality Bureau
1190 South St. Francis Drive (87505)
P.O. Box 5469, Santa Fe, New Mexico 87502-5469
Phone (505) 827-2900 Fax (505) 827-2965
www.env.nm.gov

BUTCH TONGATE
Cabinet Secretary

J.C. BORREGO
Deputy Secretary

June 22, 2018

Re: Discharge Permit Applications Submitted for Review

Notice is hereby given pursuant to 20.6.2.3108 NMAC, the following Groundwater Discharge Permit applications have been submitted to the New Mexico Environment Department (NMED) for review.

Provided the applicant has met applicable requirements, the New Mexico Environment Department (NMED) will propose for approval a Discharge Permit containing limitations, monitoring requirements, and other conditions intended to protect groundwater quality for present and potential future use. Information in this public notice was provided by the applicants and will be verified by NMED during the permit application review process. NMED will accept comments and statements of interest regarding applications and will create facility-specific mailing lists for persons who wish to receive future notices. Questions, comments or statements of interest should be directed to the NMED permit contact at (505) 827-2900 or at the following address: Ground Water Quality Bureau, PO Box 5469, Santa Fe, NM 87502-5469.

NMED does not discriminate on the basis of race, color, national origin, disability, age or sex in the administration of its programs or activities, as required by applicable laws and regulations. NMED is responsible for coordination of compliance efforts and receipt of inquiries concerning non-discrimination requirements implemented by 40 C.F.R. Part 7, including Title VI of the Civil Rights Act of 1964, as amended; Section 504 of the Rehabilitation Act of 1973; the Age Discrimination Act of 1975, Title IX of the Education Amendments of 1972, and Section 13 of the Federal Water Pollution Control Act Amendments of 1972. If you have any questions about this notice or any of NMED's non-discrimination programs, policies or procedures, you may contact: Kristine Pintado, Non-Discrimination Coordinator, New Mexico Environment Department, 1190 St. Francis Dr., Suite N4050, P.O. Box 5469, Santa Fe, NM 87502, (505) 827-2855, nd.coordinator@state.nm.us. If you believe that you have been discriminated against with respect to a NMED program or activity, you may contact the Non-Discrimination Coordinator identified above or visit our website at <https://www.env.nm.gov/non-employee-discrimination-complaint-page/> to learn how and where to file a complaint of discrimination.

Sincerely,

Lochlin Farrell
Ground Water Quality Bureau



EJSCREEN ACS Summary Report



Location: User-specified polygonal location
 Ring (buffer): 4-mile radius
 Description: S & R Septic (DP-465)

	2011 - 2015 ACS Estimates	Percent	MOE (±)
Population by Language Spoken at Home*			
Total (persons age 5 and above)	3,372	100%	645
English	N/A	N/A	N/A
Spanish	N/A	N/A	N/A
French	N/A	N/A	N/A
French Creole	N/A	N/A	N/A
Italian	N/A	N/A	N/A
Portuguese	N/A	N/A	N/A
German	N/A	N/A	N/A
Yiddish	N/A	N/A	N/A
Other West Germanic	N/A	N/A	N/A
Scandinavian	N/A	N/A	N/A
Greek	N/A	N/A	N/A
Russian	N/A	N/A	N/A
Polish	N/A	N/A	N/A
Serbo-Croatian	N/A	N/A	N/A
Other Slavic	N/A	N/A	N/A
Armenian	N/A	N/A	N/A
Persian	N/A	N/A	N/A
Gujarathi	N/A	N/A	N/A
Hindi	N/A	N/A	N/A
Urdu	N/A	N/A	N/A
Other Indic	N/A	N/A	N/A
Other Indo-European	N/A	N/A	N/A
Chinese	N/A	N/A	N/A
Japanese	N/A	N/A	N/A
Korean	N/A	N/A	N/A
Mon-Khmer, Cambodian	N/A	N/A	N/A
Hmong	N/A	N/A	N/A
Thai	N/A	N/A	N/A
Laotian	N/A	N/A	N/A
Vietnamese	N/A	N/A	N/A
Other Asian	N/A	N/A	N/A
Tagalog	N/A	N/A	N/A
Other Pacific Island	N/A	N/A	N/A
Navajo	N/A	N/A	N/A
Other Native American	N/A	N/A	N/A
Hungarian	N/A	N/A	N/A
Arabic	N/A	N/A	N/A
Hebrew	N/A	N/A	N/A
African	N/A	N/A	N/A
Other and non-specified	N/A	N/A	N/A
Total Non-English	N/A	N/A	N/A

Data Note: Detail may not sum to totals due to rounding. Hispanic population can be of any race. N/A means not available. **Source:** U.S. Census Bureau, American Community Survey (ACS) 2011 - 2015.

*Population by Language Spoken at Home is available at the census tract summary level and up.



Location: User-specified polygonal location

Ring (buffer): 4-mile radius

Description: S & R Septic (DP-465)

	2011 - 2015 ACS Estimates	Percent	MOE (±)
Population 25+ by Educational Attainment			
Total	2,564	100%	453
Less than 9th Grade	117	5%	115
9th - 12th Grade, No Diploma	82	3%	94
High School Graduate	450	18%	192
Some College, No Degree	873	34%	243
Associate Degree	202	8%	123
Bachelor's Degree or more	1,041	41%	319
Population Age 5+ Years by Ability to Speak English			
Total	3,372	100%	645
Speak only English	2,133	63%	482
Non-English at Home ¹⁺²⁺³⁺⁴	1,239	37%	375
¹ Speak English "very well"	1,075	32%	352
² Speak English "well"	48	1%	118
³ Speak English "not well"	76	2%	133
⁴ Speak English "not at all"	41	1%	63
³⁺⁴ Speak English "less than well"	117	3%	147
²⁺³⁺⁴ Speak English "less than very well"	165	5%	150
Linguistically Isolated Households*			
Total	66	100%	88
Speak Spanish	65	98%	87
Speak Other Indo-European Languages	1	2%	11
Speak Asian-Pacific Island Languages	0	0%	11
Speak Other Languages	0	0%	11
Households by Household Income			
Household Income Base	1,414	100%	227
< \$15,000	232	16%	153
\$15,000 - \$25,000	118	8%	129
\$25,000 - \$50,000	436	31%	191
\$50,000 - \$75,000	229	16%	134
\$75,000 +	399	28%	182
Occupied Housing Units by Tenure			
Total	1,414	100%	227
Owner Occupied	1,040	74%	228
Renter Occupied	375	26%	145
Employed Population Age 16+ Years			
Total	2,930	100%	513
In Labor Force	1,991	68%	441
Civilian Unemployed in Labor Force	325	11%	243
Not In Labor Force	939	32%	264

Data Note: Detail may not sum to totals due to rounding. Hispanic population can be of any race. N/A means not available. **Source:** U.S. Census Bureau, American Community Survey (ACS) 2011 - 2015.

*Households in which no one 14 and over speaks English "very well" or speaks English only.



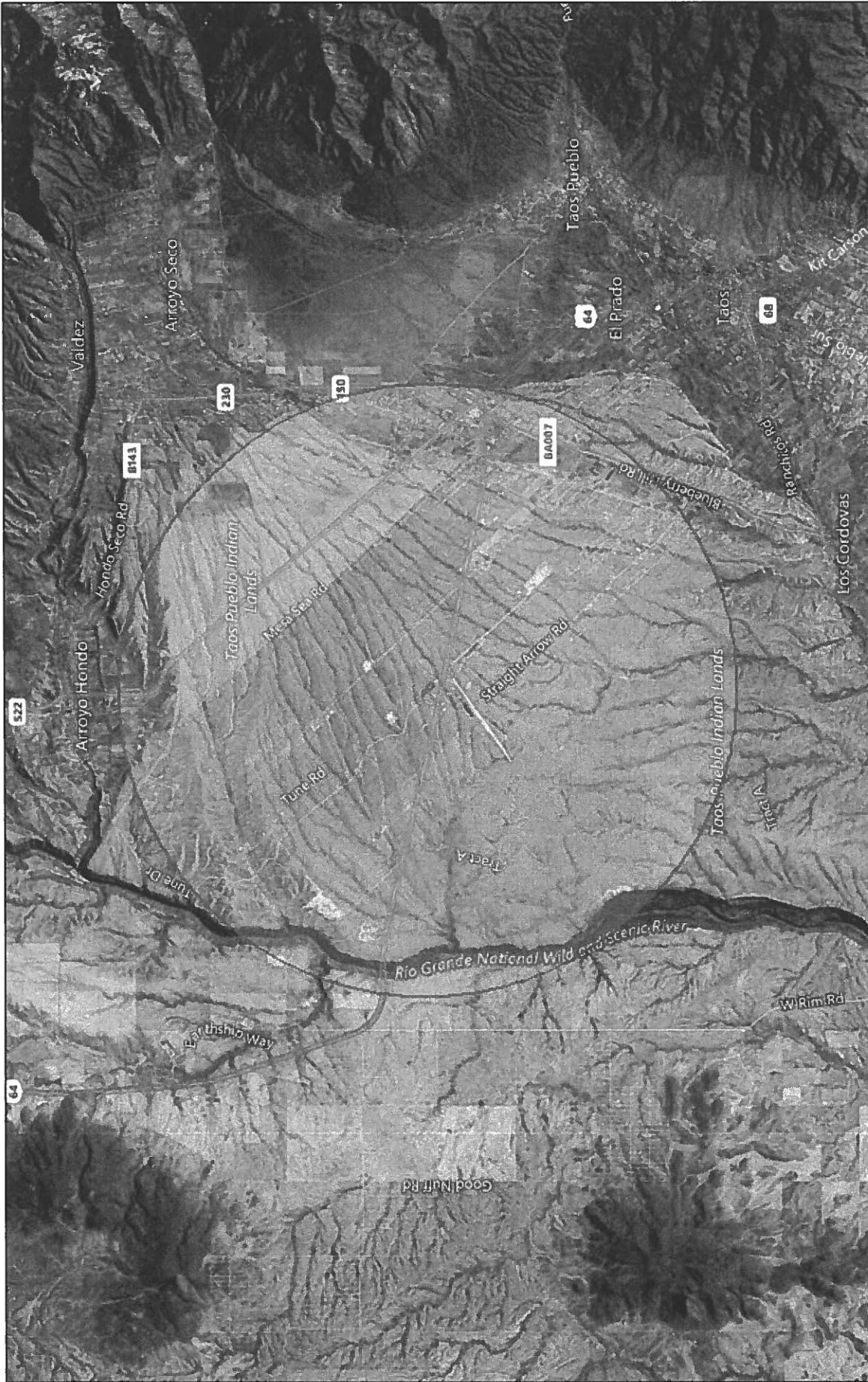
Location: User-specified polygonal location
 Ring (buffer): 4-mile radius
 Description: S & R Septic (DP-465)

Summary of ACS Estimates		2011 - 2015
Population		3,583
Population Density (per sq. mile)		70
Minority Population		1,894
% Minority		53%
Households		1,414
Housing Units		1,888
Housing Units Built Before 1950		190
Per Capita Income		23,571
Land Area (sq. miles) (Source: SF1)		51.51
% Land Area		100%
Water Area (sq. miles) (Source: SF1)		0.05
% Water Area		0%

	2011 - 2015 ACS Estimates	Percent	MOE (±)
Population by Race			
Total	3,583	100%	676
Population Reporting One Race	3,539	99%	1,277
White	2,639	74%	635
Black	2	0%	26
American Indian	34	1%	85
Asian	2	0%	14
Pacific Islander	0	0%	11
Some Other Race	862	24%	506
Population Reporting Two or More Races	44	1%	146
Total Hispanic Population	1,851	52%	520
Total Non-Hispanic Population	1,732		
White Alone	1,689	47%	460
Black Alone	2	0%	26
American Indian Alone	8	0%	42
Non-Hispanic Asian Alone	2	0%	14
Pacific Islander Alone	0	0%	11
Other Race Alone	0	0%	11
Two or More Races Alone	31	1%	72
Population by Sex			
Male	1,645	46%	369
Female	1,938	54%	445
Population by Age			
Age 0-4	210	6%	146
Age 0-17	747	21%	263
Age 18+	2,836	79%	484
Age 65+	761	21%	267

Data Note: Detail may not sum to totals due to rounding. Hispanic population can be of any race. N/A means not available.
Source: U.S. Census Bureau, American Community Survey (ACS) 2011 - 2015.

S&R Septic (DP-465)

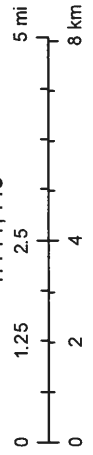


July 2, 2018

Buffer Area

Digitized Polygon

1:144,448



© 2018 Microsoft Corporation Earthstar Geographics SIO © 2018 HERE