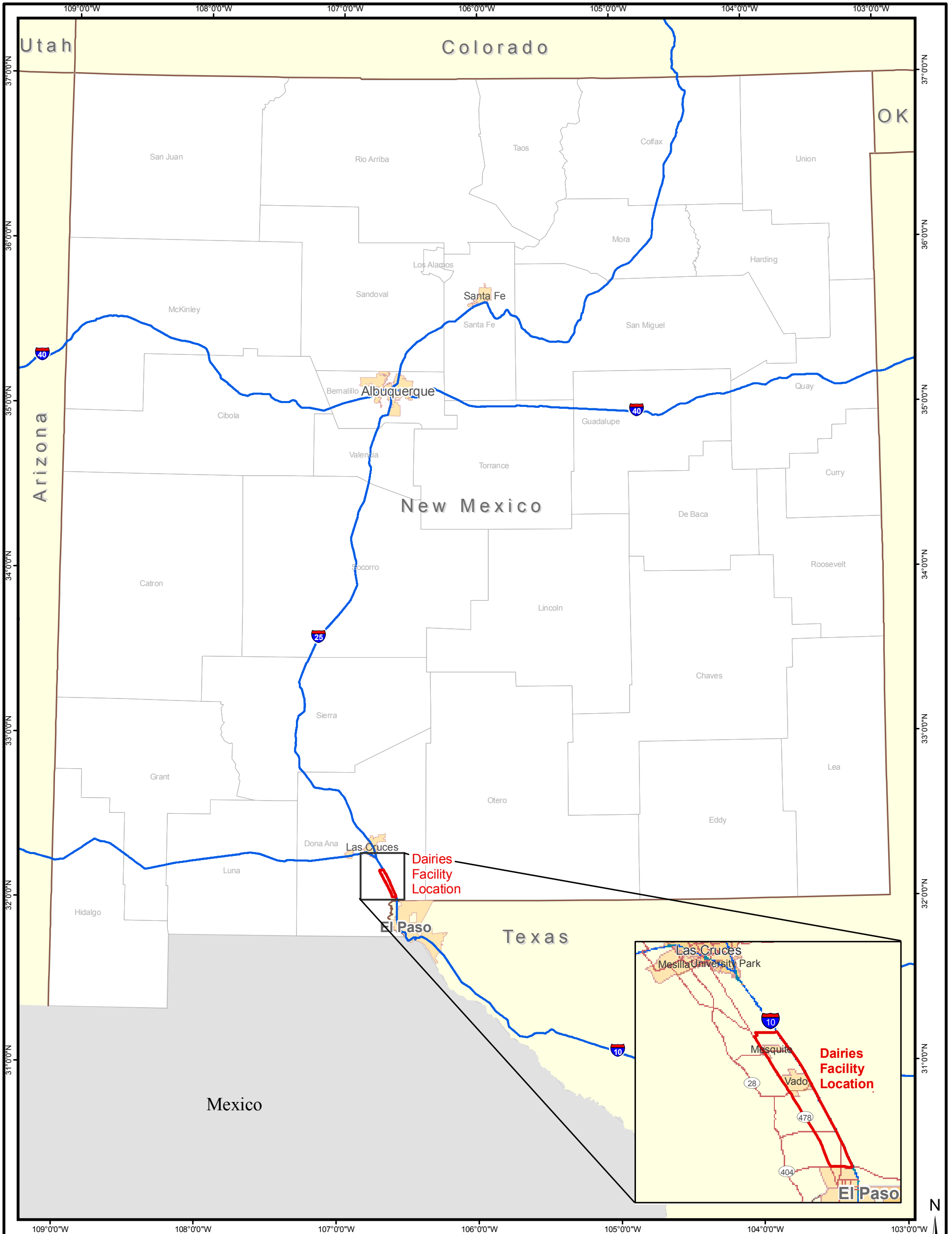


FIGURES

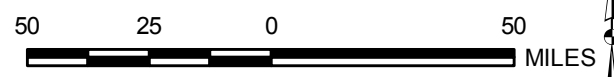


LEGEND:


 Facility Boundary

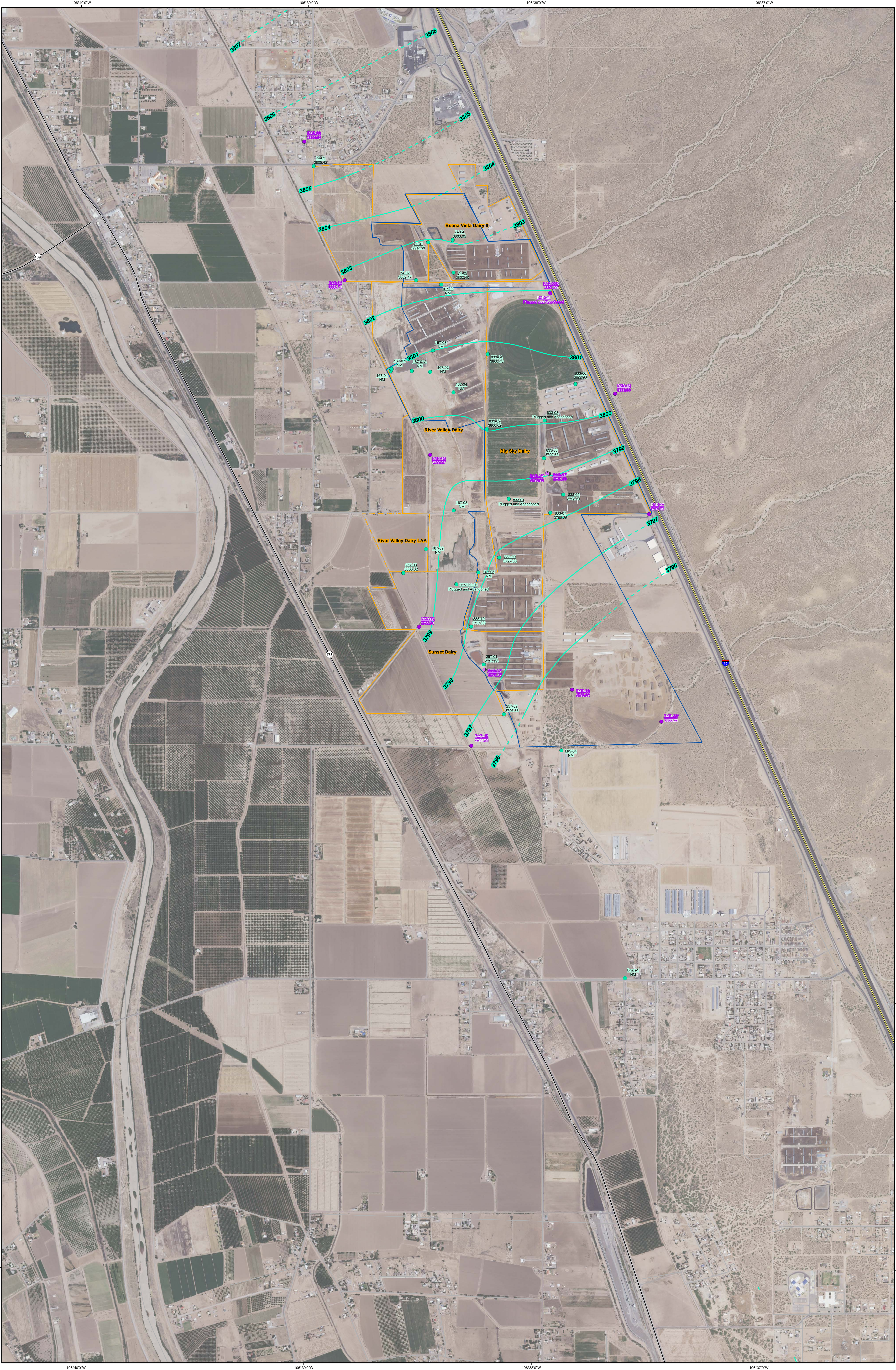
REFERENCES

Base Data: ESRI, 2008.



SCALE 1:2,500,000
WHEN PRODUCED AT 11X17IN

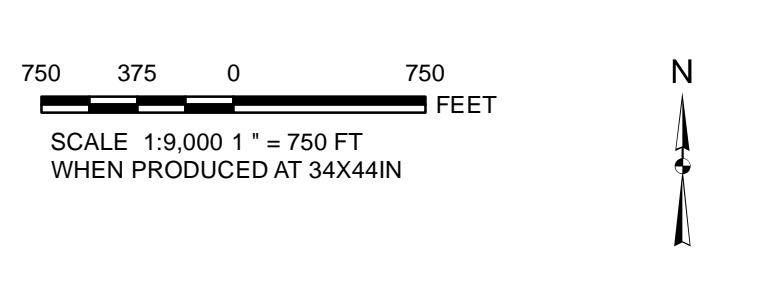
PROJECT		DOÑA ANA DAIRIES MESQUITE, NEW MEXICO	
TITLE		SITE LOCATION MAP	
	PROJECT No.	11x17_siteloc.mxd	
	DESIGN		SCALE AS SHOWN
	GIS		REV 0
	CHECK		
REVIEW			
			FIGURE 1



- LEGEND**
- Discharge Plan Well with Water Elevation (Feet MSL)
 - Abatement Plan Well With Water Elevations (Feet MSL)
 - Abatement Plan Vertical Delineation Well
 - Abatement Plan Well - Plugged and Abandoned
 - Discharge Plan Well - Plugged and Abandoned
 - Drain Crossing Location
 - - - Potentiometric Contour
 - Potentiometric Contour - Inferred
 - ▭ Land Owned by Dairies
 - ▭ Land Application by Non-Dairy
 - ▭ Stage 2 Abatement Plan

Note:
 Well not used in contouring
 Feet MSL = Feet above mean sea level
 NM = Not measured

REFERENCES
 Rosati, Dona Ana County, 2001
 Aerial Photography: NAIP, 2022
 Projection: State Plane NAD 83 New Mexico Central (feet)

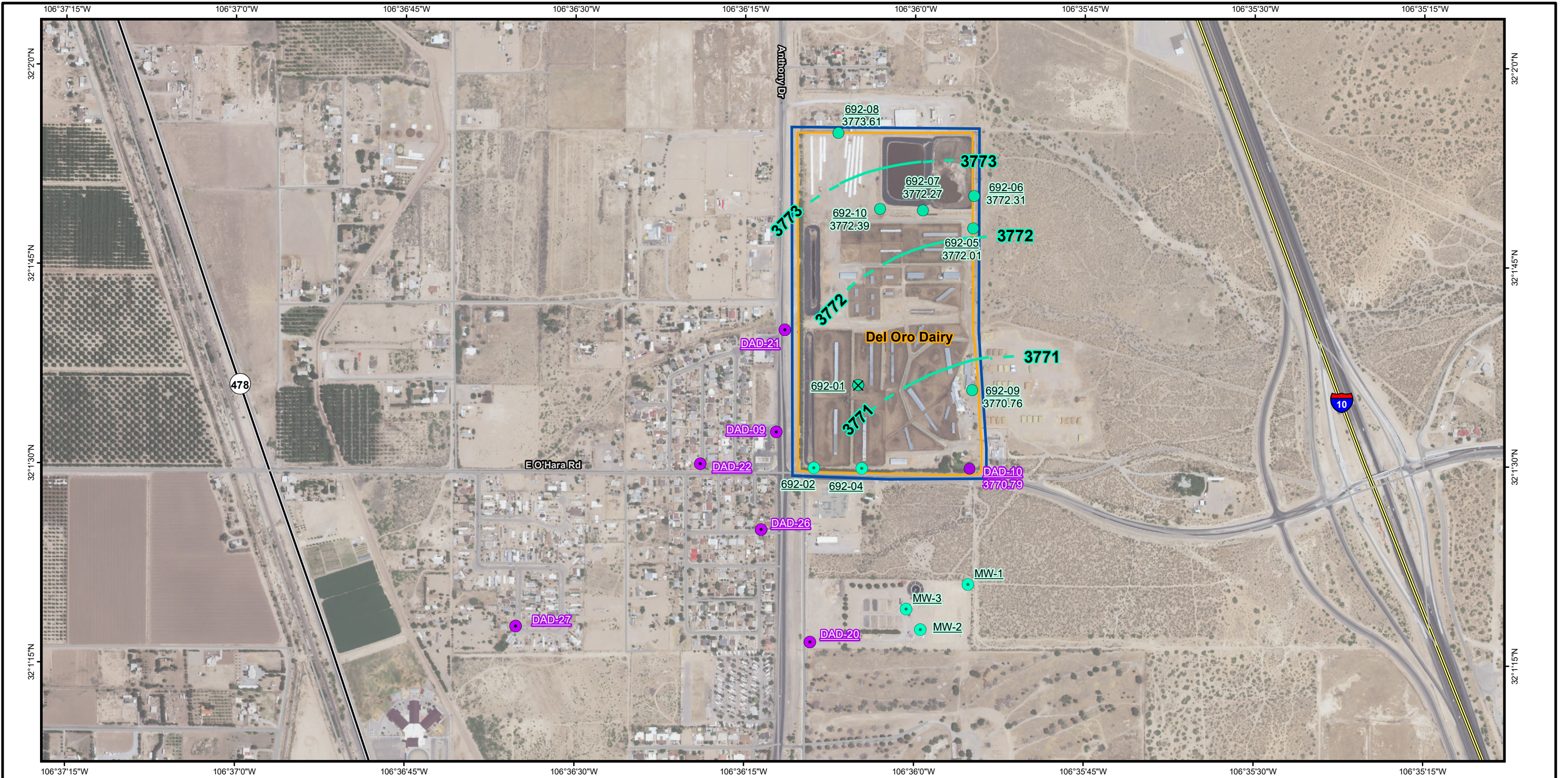


PROJECT		DOÑA ANA DAIRIES MESQUITE, NEW MEXICO	
DATE		POTENTIOMETRIC SURFACE MAP MAY 2024, CENTRAL PORTION	
PROJECT No.	DATE	SCALE	FIGURE

EA FIGURE 3

2024 05/23 10:00 AM C:\Users\jdoyle\OneDrive\Documents\2024\05\23\10:00 AM\DOA\DOA_POTENTIOMETRIC_SURFACE_MAP_MAY_2024_CENTRAL_PORTION.dwg

2024-08-12 P:\gis2\Commercial\Dona Ana Dairies - 2146411401 May 2024\Projects\Fig 4 SouthRegionAq_Pot_2024_05.mxd EA-Albuquerque rmullen



LEGEND:

Perched Aquifer Monitoring Well

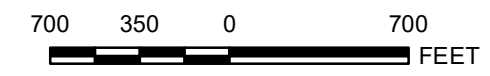
- Abatement Plan Well
- Discharge Plan Well
- ⊗ Discharge Plan Well - Plugged and Abandoned

Regional Aquifer Monitoring Well

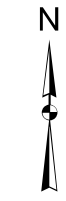
- Abatement Plan Well With Water Elevations (Feet Above Mean Sea Level)
- Discharge Plan Well with Water Elevation (Feet Above Mean Sea Level)

- Potentiometric Contour
- - - Potentiometric Contour - Inferred
- Land Owned by Dairies
- Stage 2 Abatement Plan Area

REFERENCES
 Aerial Photography: NAIP 2022
 Projection: State Plane NAD 83 New Mexico Central (feet)

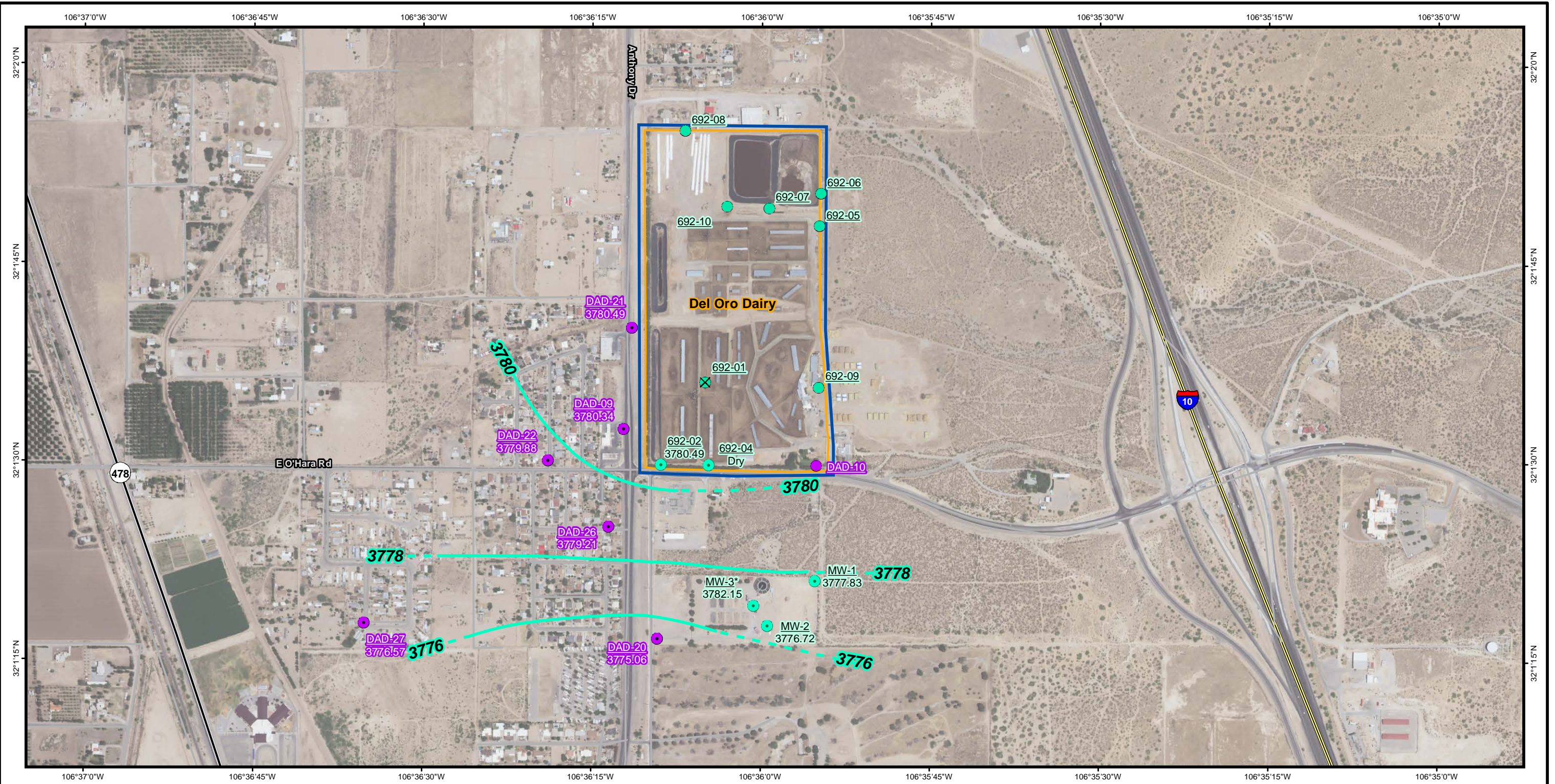


SCALE 1:9,000 1" = 750 FT
 WHEN PRODUCED AT 11X17IN



PROJECT		DOÑA ANA DAIRIES MESQUITE, NEW MEXICO	
TITLE		POTENTIOMETRIC SURFACE MAP MAY 2024, SOUTHERN PORTION REGIONAL AQUIFER	
	PROJECT No.	21464114.02	Fig 4 SouthRegionAq_Pot.mxd
	DESIGN	NA	SCALE AS SHOWN
	GIS	RMM	REV 0
	CHECK	TM	FIGURE 4
	REVIEW	TM	

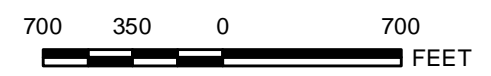
2024-08-22 P:\gis2\Commercial\Dona Ana Dairies - 2146411401 May 2024\Projects\Fig 5 SouthPerchAq_Pot_2024_05.mxd EA-Albuquerque rullen



LEGEND:

- Drain Crossing Location
- Perched Aquifer Monitoring Well**
 - Abatement Plan Well With Water Elevations (Feet Above Mean Sea Level)
 - Discharge Plan Well with Water Elevation (Feet Above Mean Sea Level)
 - ✕ Discharge Plan Well - Plugged and Abandoned
- Regional Aquifer Monitoring Well**
 - Abatement Plan Well
 - Discharge Plan Well
- Potentiometric Contour
- - - Potentiometric Contour - Inferred
- Land Owned by Dairies
- Stage 2 Abatement Plan Area

Note:
* = Not used in contouring.



SCALE 1:9,000 1" = 750 FT
WHEN PRODUCED AT 11X17IN



REFERENCES

Aerial Photography: NAIP 2022
Projection: State Plane NAD 83 New Mexico Central (feet)

DOÑA ANA DAIRIES MESQUITE, NEW MEXICO			
POTENTIOMETRIC SURFACE MAP MAY 2024, SOUTHERN PORTION PERCHED AQUIFER			
	PROJECT No. 21464114.02		SCALE AS SHOWN
	DESIGN	NA	REV 0
	GIS	RMM	
	CHECK	TM	
	REVIEW	TM	
FIGURE 5			

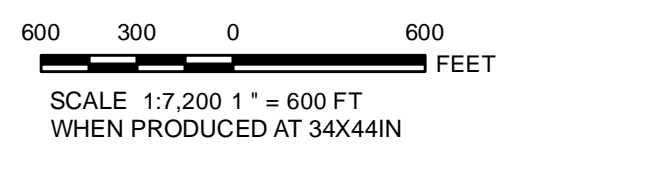


- LEGEND:**
- Abatement Plan Monitoring Well
 - Discharge Plan Monitoring Well
 - Discharge Plan Monitoring Well, Plugged and Abandoned or Destroyed
 - Dairy Irrigation/Supply Well
 - Abatement Plan Vertical Delineation Monitoring Well
 - Interstate Highway
 - State Highway
 - Other Road
 - Land Owned by Dairies
 - Land Application on Non-Dairy Property
 - Stage 2 Abatement Plan Area

Notes:
Units are in milligrams per liter.

Cl = Chloride
LRG = Irrigation well
NO₃ = Nitrate as N
NS = Not Sampled
TDS = Total Dissolved Solids

REFERENCES
Roads: Doña Ana County, 2001
Aerial Photography: NAIP, 2022
Projection: State Plane NAD 83 New Mexico Central (feet)



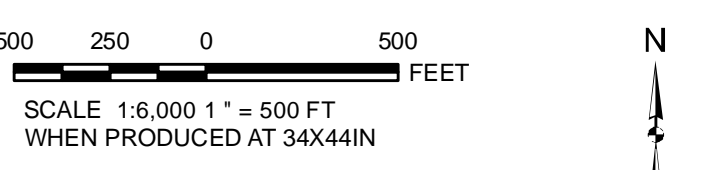
PROJECT	
DOÑA ANA DAIRIES MESQUITE, NEW MEXICO	
FILE	
GROUNDWATER ANALYTICAL RESULTS NORTHERN PORTION	
DATE	MAY/JUNE 2024
SCALE	1:7,200
FIGURE	FIGURE 6



- LEGEND:**
- Abatement Plan Monitoring Well
 - Abatement Plan Monitoring Well, Plugged and Abandoned
 - Discharge Plan Monitoring Well
 - Discharge Plan Monitoring Well, Plugged and Abandoned
 - Dairy Irrigation/Supply Well
 - Abatement Plan Vertical Delineation Monitoring Well
 - Interstate Highway
 - State Highway
 - Other Road
 - Land Owned by Dairies
 - Land Application on Non-Dairy Property
 - Stage 2 Abatement Plan Area

Notes:
 Units are in milligrams per liter.
 Cl = Chloride
 LRG = Irrigation well
 NO₃-N = Nitrate as N
 NS = Not Sampled
 TDS = Total Dissolved Solids

REFERENCES
 Roads: Dona Ana County, 2001
 Aerial Photography: NARS, 2022
 Projection: State Plane NAD 83 New Mexico Central (feet)

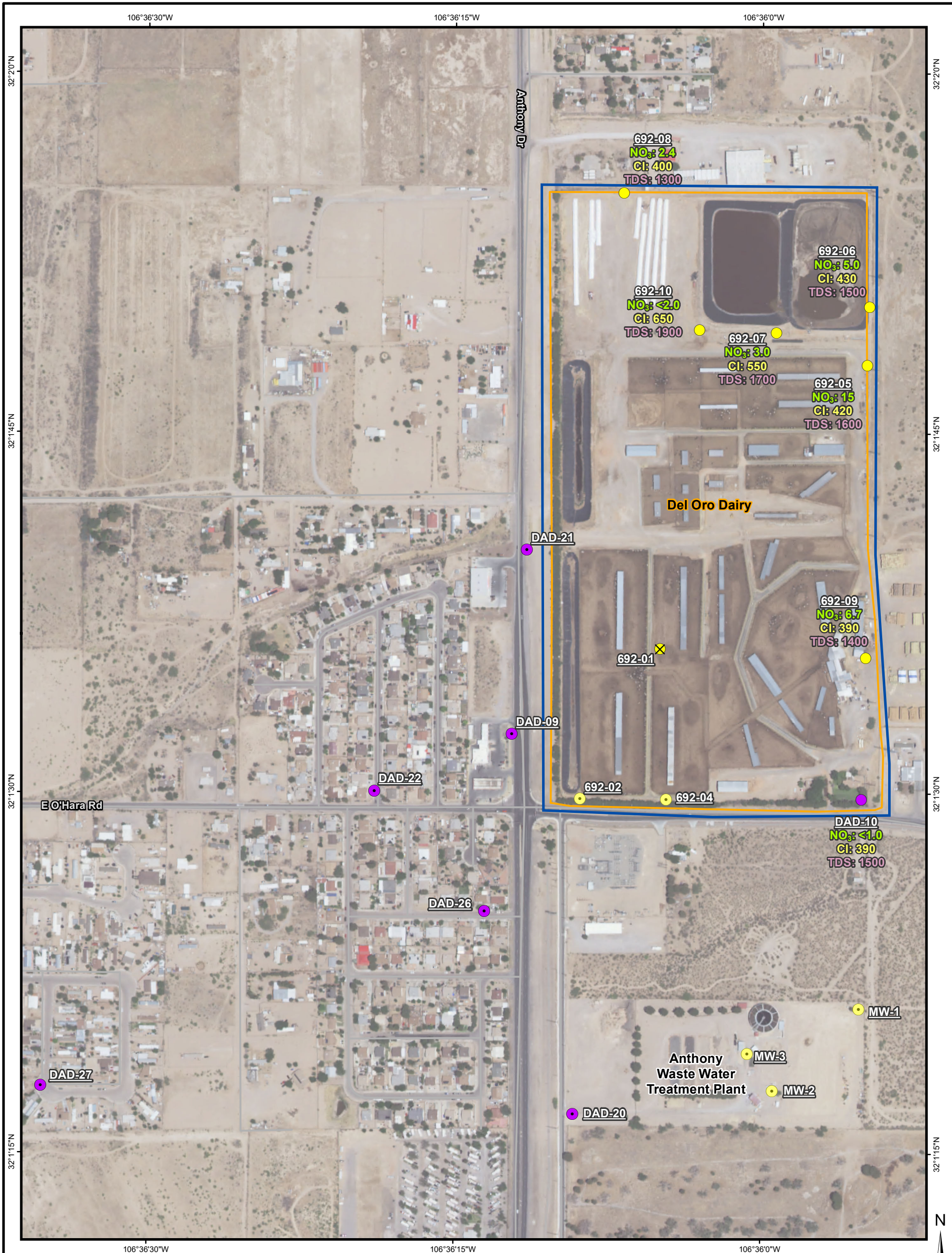


PROJECT: DOÑA ANA DAIRIES
 MESQUITE, NEW MEXICO

THE GROUNDWATER ANALYTICAL RESULTS
 MAY/JUNE 2024
 CENTRAL PORTION

PROJECT NO.	18-0001
DATE	05/2024
DRAWN BY	JD
CHECKED BY	JD
DATE	05/2024

FIGURE 7

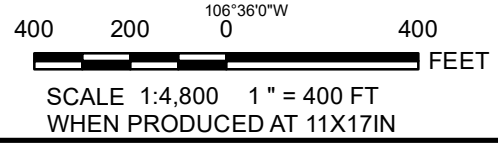


LEGEND :

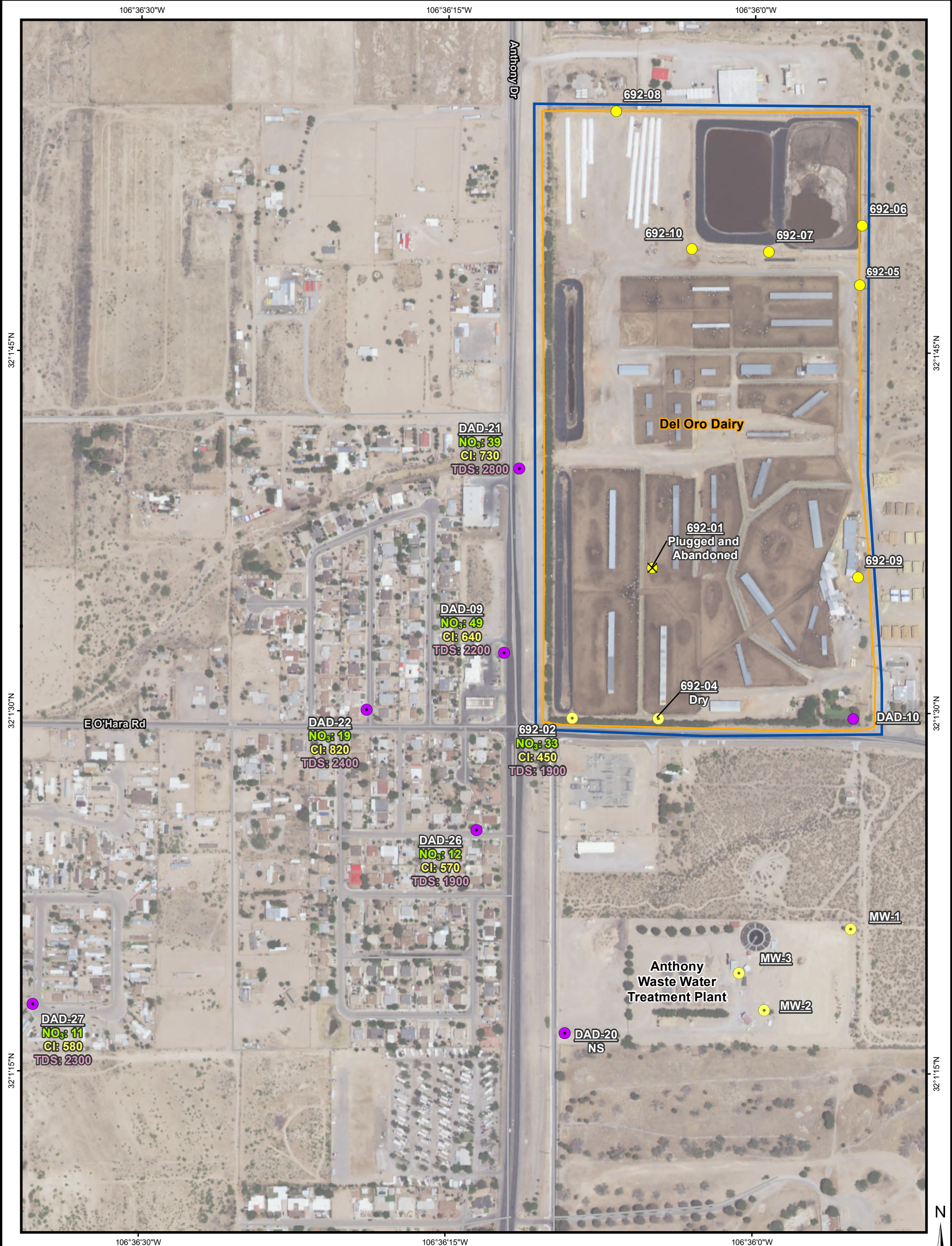
- Perched Aquifer Monitoring Well**
- Abatement Plan Monitoring Well
 - Discharge Plan Monitoring Well
 - ✕ Discharge Plan Monitoring Well - Plugged and Abandoned
- Regional Aquifer Monitoring Well**
- Abatement Plan Monitoring Well
 - Discharge Plan Monitoring Well
- Land Owned by Dairies
 - Stage 2 Abatement Plan Area

Notes:
 Units are in milligrams per liter.
 Cl = Chloride
 NO₃ = Nitrate as N
 TDS = Total Dissolved Solids

REFERENCES
 Aerial Photography: NAIP, 2022
 Projection: State Plane NAD 83 New Mexico Central (feet)



PROJECT					
DOÑA ANA DAIRIES MESQUITE, NEW MEXICO					
TITLE					
GROUNDWATER ANALYTICAL RESULTS MAY/JUNE 2024 SOUTHERN PORTION, REGIONAL AQUIFER					
	PROJECT No. 21464114.02	FIGURE 8			
	DESIGN NA			SCALE AS SHOWN	REV 0
	GIS RM				
	CHECK				
REVIEW					

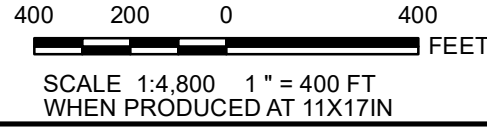


LEGEND:

- Perched Aquifer Monitoring Well**
 - Abatement Plan Monitoring Well
 - Discharge Plan Monitoring Well
 - ⊗ Discharge Plan Monitoring Well - Plugged and Abandoned
- Regional Aquifer Monitoring Well**
 - Abatement Plan Monitoring Well
 - Discharge Plan Monitoring Well
- ▭ Land Owned by Dairies
- ▭ Stage 2 Abatement Plan Area

Notes:
 Units are in milligrams per liter.
 Cl = Chloride
 mg/L = Milligram(s) per liter
 NO₃ = Nitrate as N
 NS = Not sampled
 TDS = Total Dissolved Solids

REFERENCES
 Aerial Photography: NAIP, 2022
 Projection: State Plane NAD 83 New Mexico Central (feet)



PROJECT				
DOÑA ANA DAIRIES MESQUITE, NEW MEXICO				
TITLE				
GROUNDWATER ANALYTICAL RESULTS MAY/JUNE 2024 SOUTHERN PORTION, PERCHED AQUIFER				
	PROJECT No. 21464114.02		FIGURE 9	
	DESIGN	NA		SCALE AS SHOWN
	GIS	RM		REV 0
	CHECK			
REVIEW				

2024-08-12 P:\gis2\Commercial\Doña Ana Dairies - 21464114\01 May 2024\Projects\Fig 9 SouthPerchAq_Analytical.mxd EA-Albuquerque rmlullen