

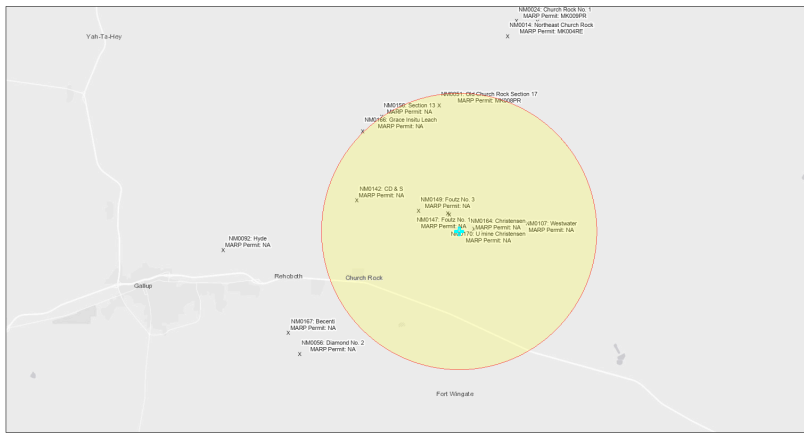


EJScreen Community Report

This report provides environmental and socioeconomic information for user-defined areas, and combines that data into environmental justice and supplemental indexes.

Williams and Reynolds NM0171

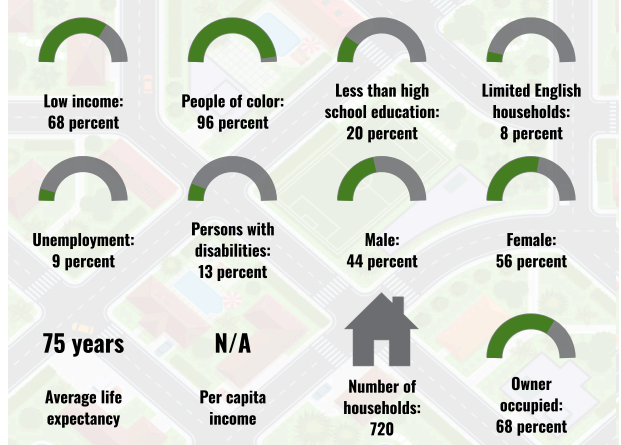
5 miles Ring Centered at 35.556145,-108.539788
 Population: 2,747
 Area in square miles: 78.53



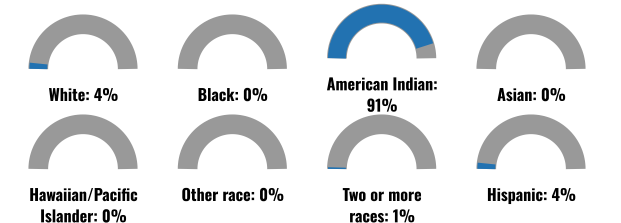
September 24, 2024
 Williams and Reynolds NM0171
 Abandoned Uranium Mines

1:144,448
 Bureau of Land Management, EPA, HERS, Geoinfo, USGS, BIA, IHS, New Mexico Energy, Storage and Natural Resources Department, EIS, HERS, IHS

COMMUNITY INFORMATION



BREAKDOWN BY RACE



BREAKDOWN BY AGE



LIMITED ENGLISH SPEAKING BREAKDOWN



Notes: Numbers may not sum to totals due to rounding. Hispanic population can be of any race. Source: U.S. Census Bureau American Community Survey (ACS) 2018-2022. Life expectancy data comes from the Centers for Disease Control.

LANGUAGES SPOKEN AT HOME

LANGUAGE	PERCENT
English	45%
Other and Unspecified	55%
Total Non-English	55%

Report for 5 miles Ring Centered at 35.556145,-108.539788
 Report produced September 24, 2024 using EJScreen Version 2.3

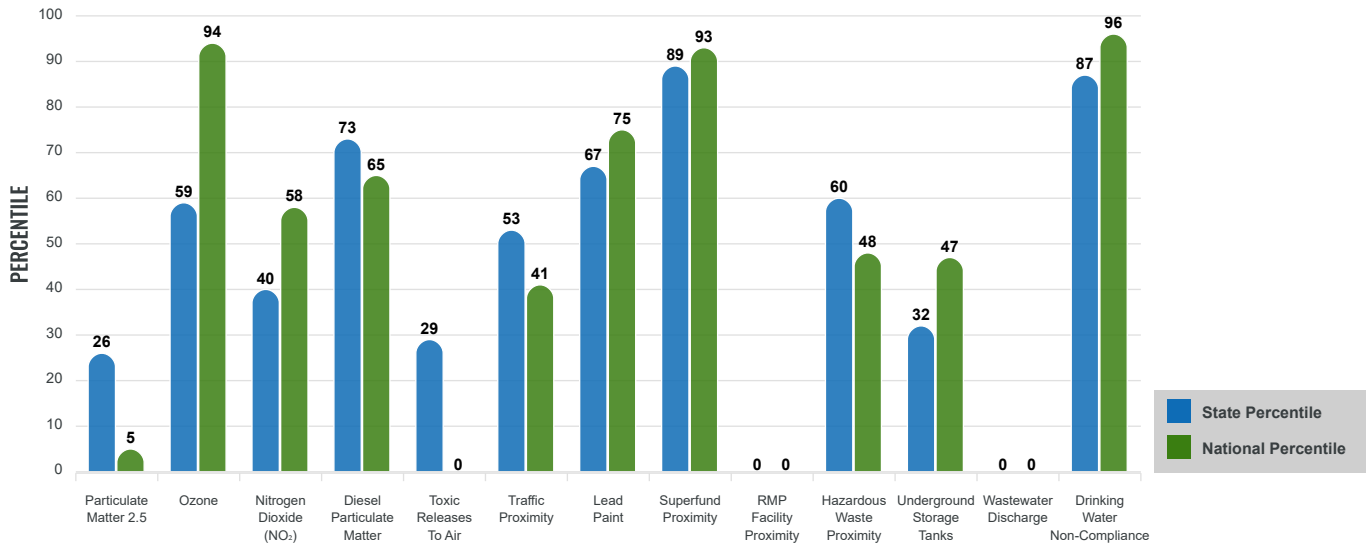
Environmental Justice & Supplemental Indexes

The environmental justice and supplemental indexes are a combination of environmental and socioeconomic information. There are thirteen EJ indexes and supplemental indexes in EJScreen reflecting the 13 environmental indicators. The indexes for a selected area are compared to those for all other locations in the state or nation. For more information and calculation details on the EJ and supplemental indexes, please visit the [EJScreen website](#).

EJ INDEXES

The EJ indexes help users screen for potential EJ concerns. To do this, the EJ index combines data on low income and people of color populations with a single environmental indicator.

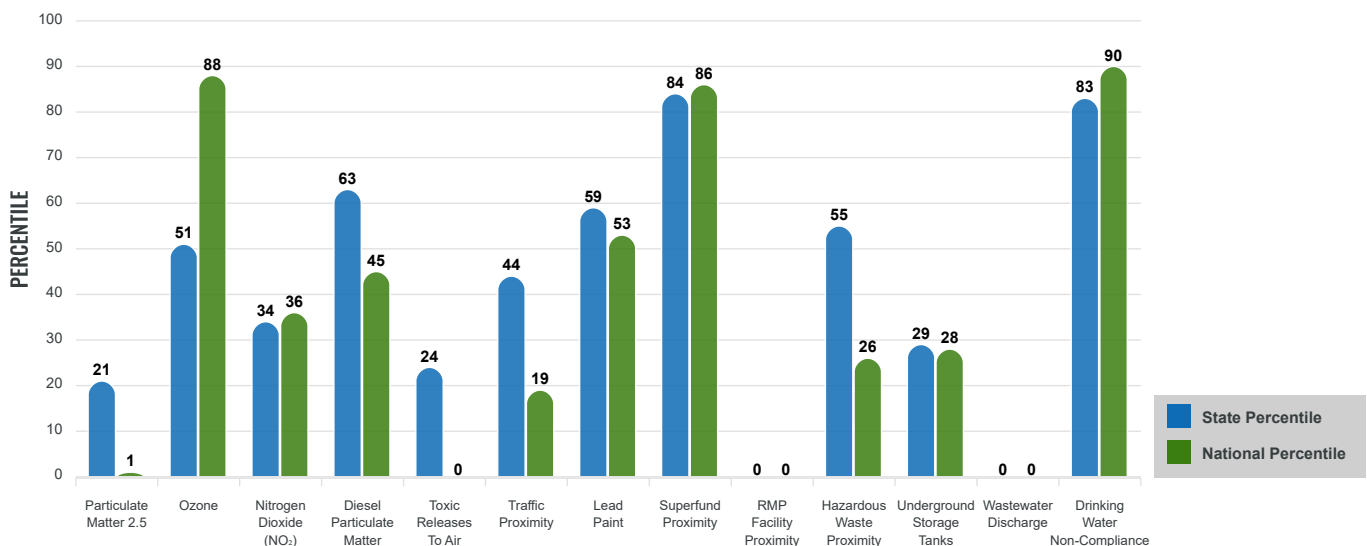
EJ INDEXES FOR THE SELECTED LOCATION



SUPPLEMENTAL INDEXES

The supplemental indexes offer a different perspective on community-level vulnerability. They combine data on percent low income, percent persons with disabilities, percent less than high school education, percent limited English speaking, and percent low life expectancy with a single environmental indicator.

SUPPLEMENTAL INDEXES FOR THE SELECTED LOCATION



Report for 5 miles Ring Centered at 35.556145,-108.539788

Report produced September 24, 2024 using EJScreen Version 2.3

EJScreen Environmental and Socioeconomic Indicators Data

SELECTED VARIABLES	VALUE	STATE AVERAGE	PERCENTILE IN STATE	USA AVERAGE	PERCENTILE IN USA
ENVIRONMENTAL BURDEN INDICATORS					
Particulate Matter 2.5 (µg/m ³)	4.89	6.11	13	8.45	1
Ozone (ppb)	63.8	65.3	31	61.8	66
Nitrogen Dioxide (NO ₂) (ppbv)	4.6	8.1	22	7.8	19
Diesel Particulate Matter (µg/m ³)	0.0909	0.187	42	0.191	24
Toxic Releases to Air (toxicity-weighted concentration)	0	29	14	4,600	0
Traffic Proximity (daily traffic count/distance to road)	51,000	730,000	29	1,700,000	12
Lead Paint (% Pre-1960 Housing)	0.11	0.19	54	0.3	37
Superfund Proximity (site count/km distance)	0.12	0.34	69	0.39	63
RMP Facility Proximity (facility count/km distance)	0	0.2	0	0.57	0
Hazardous Waste Proximity (facility count/km distance)	0.085	1.2	38	3.5	17
Underground Storage Tanks (count/km ²)	0.097	2.8	37	3.6	33
Wastewater Discharge (toxicity-weighted concentration/m distance)	0	990000	0	700000	0
Drinking Water Non-Compliance (points)	0.4	5.6	72	2.2	75
SOCIOECONOMIC INDICATORS					
Demographic Index USA	3.13	N/A	N/A	1.34	96
Supplemental Demographic Index USA	2.37	N/A	N/A	1.64	86
Demographic Index State	3.51	2.16	93	N/A	N/A
Supplemental Demographic Index State	2.13	1.62	78	N/A	N/A
People of Color	96%	62%	91	40%	93
Low Income	68%	39%	88	30%	93
Unemployment Rate	9%	6%	73	6%	79
Limited English Speaking Households	8%	6%	74	5%	81
Less Than High School Education	20%	14%	74	11%	82
Under Age 5	6%	5%	69	5%	66
Over Age 64	9%	20%	20	18%	22

*Diesel particulate matter index is from the EPA's Air Toxics Data Update, which is the Agency's ongoing, comprehensive evaluation of air toxics in the United States. This effort aims to prioritize air toxics, emission sources, and locations of interest for further study. It is important to remember that the air toxics data presented here provide broad estimates of health risks over geographic areas of the country, not definitive risks to specific individuals or locations. More information on the Air Toxics Data Update can be found at: <https://www.epa.gov/haps/air-toxics-data-update>.

Sites reporting to EPA within defined area:

Superfund	0
Hazardous Waste, Treatment, Storage, and Disposal Facilities	0
Water Dischargers	45
Air Pollution	2
Brownfields	0
Toxic Release Inventory	0

Other community features within defined area:

Schools	1
Hospitals	0
Places of Worship	1

Other environmental data:

Air Non-attainment	No
Impaired Waters	Yes

Selected location contains American Indian Reservation Lands*	Yes
Selected location contains a "Justice40 (CEJST)" disadvantaged community	Yes
Selected location contains an EPA IRA disadvantaged community	Yes

Report for 5 miles Ring Centered at 35.556145,-108.539788
 Report produced September 24, 2024 using EJScreen Version 2.3

EJScreen Environmental and Socioeconomic Indicators Data

HEALTH INDICATORS

INDICATOR	VALUE	STATE AVERAGE	STATE PERCENTILE	US AVERAGE	US PERCENTILE
Low Life Expectancy	23%	19%	83	20%	81
Heart Disease	9.4	5.9	97	5.8	96
Asthma	16.3	11.2	99	10.3	99
Cancer	5.2	6.1	27	6.4	25
Persons with Disabilities	13.2%	17.1%	30	13.7%	52

CLIMATE INDICATORS

INDICATOR	VALUE	STATE AVERAGE	STATE PERCENTILE	US AVERAGE	US PERCENTILE
Flood Risk	8%	9%	59	12%	56
Wildfire Risk	2%	58%	30	14%	79

CRITICAL SERVICE GAPS

INDICATOR	VALUE	STATE AVERAGE	STATE PERCENTILE	US AVERAGE	US PERCENTILE
Broadband Internet	54%	20%	93	13%	99
Lack of Health Insurance	18%	10%	88	9%	90
Housing Burden	No	N/A	N/A	N/A	N/A
Transportation Access Burden	Yes	N/A	N/A	N/A	N/A
Food Desert	Yes	N/A	N/A	N/A	N/A

Report for 5 miles Ring Centered at 35.556145,-108.539788

Report produced September 24, 2024 using EJScreen Version 2.3

Location: User-specified point center at 35.556145, -108.539788
 Ring (buffer): 5-miles radius
 Description: Williams and Reynolds NM0171

Summary of ACS Estimates		2018 - 2022
Population		2,747
Population Density (per sq. mile)		36
People of Color Population		2,647
% People of Color Population		96%
Households		720
Housing Units		890
Housing Units Built Before 1950		15
Per Capita Income		N/A
Land Area (sq. miles) (Source: SF1)		75.69
% Land Area		100%
Water Area (sq. miles) (Source: SF1)		0.02
% Water Area		0%

	2018 - 2022 ACS Estimates	Percent	MOE (±)
Population by Race			
Total	2,747	100%	284
Population Reporting One Race	2,712	99%	559
White	101	4%	123
Black	6	0%	13
American Indian	2,605	95%	277
Asian	0	0%	13
Pacific Islander	0	0%	13
Some Other Race	0	0%	120
Population Reporting Two or More Races	36	1%	27
Total Hispanic Population	104	4%	163
Total Non-Hispanic Population	2,643		
White Alone	101	4%	123
Black Alone	6	0%	13
American Indian Alone	2,502	91%	261
Non-Hispanic Asian Alone	0	0%	13
Pacific Islander Alone	0	0%	13
Other Race Alone	0	0%	28
Two or More Races Alone	35	1%	27
Population by Sex			
Male	1,202	44%	162
Female	1,545	56%	201
Population by Age			
Age 0-4	178	6%	52
Age 0-17	750	27%	110
Age 18+	1,997	73%	181
Age 65+	258	9%	60

Data Note: Detail may not sum to totals due to rounding. Hispanic population can be of any race.

N/A means not available. **Source:** U.S. Census Bureau, American Community Survey (ACS) 2018 - 2022

Location: User-specified point center at 35.556145, -108.539788
 Ring (buffer): 5-miles radius
 Description: Williams and Reynolds NM0171

	2018 - 2022 ACS Estimates	Percent	MOE (±)
Population 25+ by Educational Attainment			
Total	1,683	100%	186
Less than 9th Grade	121	7%	40
9th - 12th Grade, No Diploma	218	13%	41
High School Graduate	598	36%	102
Some College, No Degree	397	24%	74
Associate Degree	147	9%	45
Bachelor's Degree or more	201	12%	109
Population Age 5+ Years by Ability to Speak English			
Total	2,570	100%	268
Speak only English	1,208	47%	172
Non-English at Home ¹⁺²⁺³⁺⁴	1,361	53%	215
¹ Speak English "very well"	1,132	44%	215
² Speak English "well"	157	6%	72
³ Speak English "not well"	51	2%	46
⁴ Speak English "not at all"	21	1%	45
³⁺⁴ Speak English "less than well"	72	3%	64
²⁺³⁺⁴ Speak English "less than very well"	229	9%	96
Limited English Speaking Households*			
Total	56	100%	29
Speak Spanish	0	0%	13
Speak Other Indo-European Languages	0	0%	13
Speak Asian-Pacific Island Languages	0	0%	13
Speak Other Languages	56	100%	19
Households by Household Income			
Household Income Base	720	100%	92
< \$15,000	202	28%	70
\$15,000 - \$25,000	74	10%	23
\$25,000 - \$50,000	126	18%	35
\$50,000 - \$75,000	84	12%	38
\$75,000 +	234	33%	106
Occupied Housing Units by Tenure			
Total	720	100%	92
Owner Occupied	492	68%	70
Renter Occupied	228	32%	94
Employed Population Age 16+ Years			
Total	2,071	100%	229
In Labor Force	1,009	49%	171
Civilian Unemployed in Labor Force	86	9%	44
Not In Labor Force	1,062	51%	133

Data Note: Detail may not sum to totals due to rounding. Hispanic population can be of anyrace.

N/A means not available. **Source:** U.S. Census Bureau, American Community Survey (ACS)

*Households in which no one 14 and over speaks English "very well" or speaks English only.

Location: User-specified point center at 35.556145, -108.539788

Ring (buffer): 5-miles radius

Description: Williams and Reynolds NM0171

	2018 - 2022 ACS Estimates	Percent	MOE (±)
Population by Language Spoken at Home*			
Total (persons age 5 and above)	1,246	100%	300
English	564	45%	257
Spanish	0	0%	13
French, Haitian, or Cajun	0	0%	13
German or other West Germanic	0	0%	13
Russian, Polish, or Other Slavic	0	0%	13
Other Indo-European	0	0%	13
Korean	0	0%	13
Chinese (including Mandarin, Cantonese)	0	0%	13
Vietnamese	0	0%	13
Tagalog (including Filipino)	0	0%	13
Other Asian and Pacific Island	0	0%	13
Arabic	0	0%	13
Other and Unspecified	682	55%	195
Total Non-English	682	55%	395

Data Note: Detail may not sum to totals due to rounding. Hispanic population can be of any race.
N/A means not available. **Source:** U.S. Census Bureau, American Community Survey (ACS) 2018 - 2022.
*Population by Language Spoken at Home is available at the census tract summary level and up.