

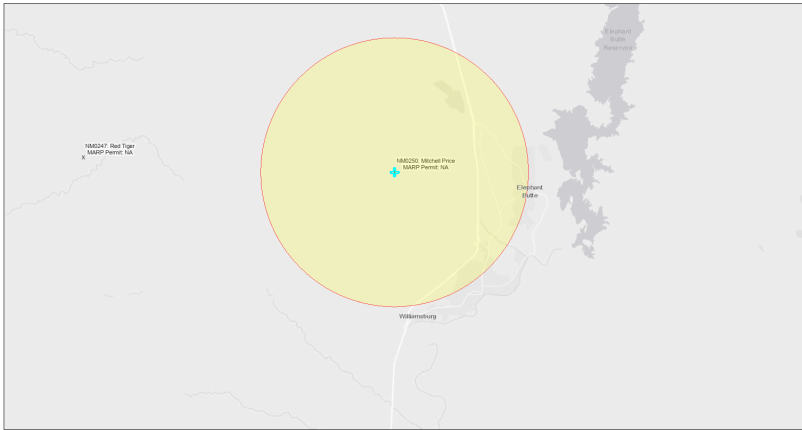


# EJScreen Community Report

This report provides environmental and socioeconomic information for user-defined areas, and combines that data into environmental justice and supplemental indexes.

## Mitchell Price NM0250

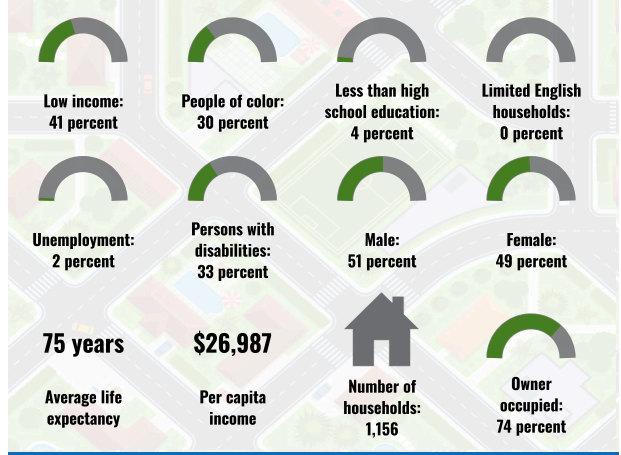
5 miles Ring Centered at 33.194335,-107.306871  
 Population: 2,519  
 Area in square miles: 78.53



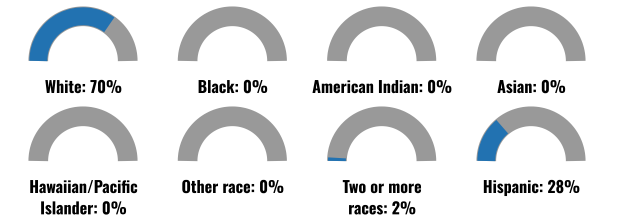
September 25, 2024  
 Mitchell Price NM0250  
 \* Abandoned Uranium Mines

1:144,448  
 Bureau of Land Management, Esri, HERE, Garmin, IGN, IGC, NOAA, NPS, USGS, USFWS, and the U.S. Department of the Interior, U.S. Department of Justice, and the U.S. Environmental Protection Agency

### COMMUNITY INFORMATION



### BREAKDOWN BY RACE



### BREAKDOWN BY AGE



### LIMITED ENGLISH SPEAKING BREAKDOWN



Notes: Numbers may not sum to totals due to rounding. Hispanic population can be of any race. Source: U.S. Census Bureau, American Community Survey (ACS) 2018-2022. Life expectancy data comes from the Centers for Disease Control.

### LANGUAGES SPOKEN AT HOME

LANGUAGE	PERCENT
English	82%
Spanish	17%
French, Haitian, or Cajun	1%
Total Non-English	18%

Report for 5 miles Ring Centered at 33.194335,-107.306871  
 Report produced September 25, 2024 using EJScreen Version 2.3

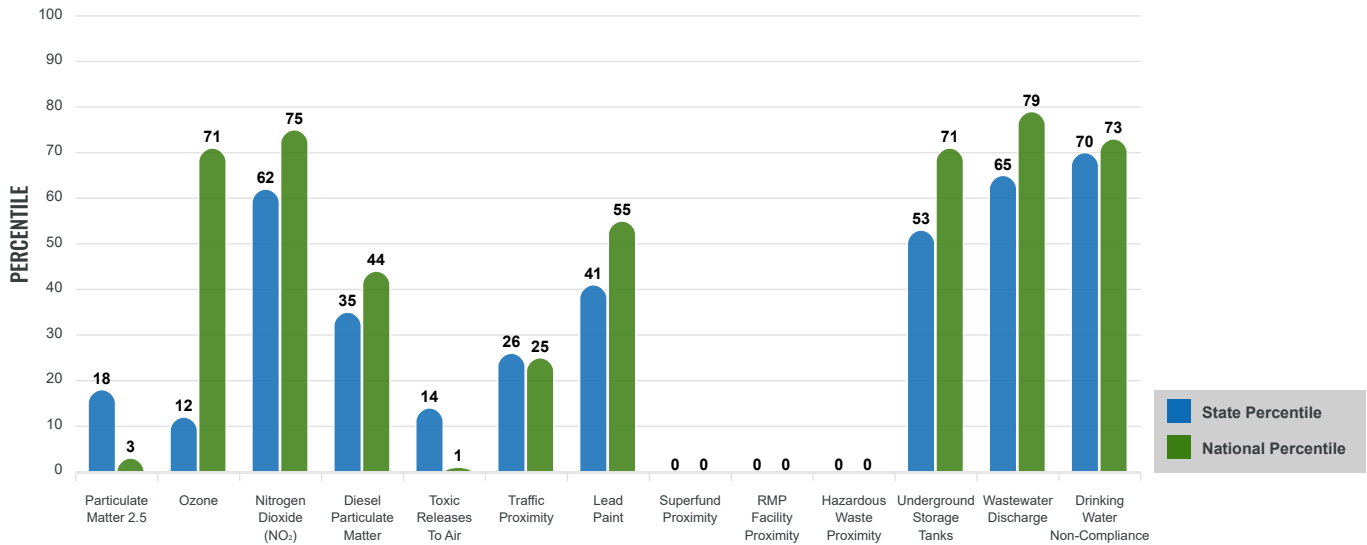
# Environmental Justice & Supplemental Indexes

The environmental justice and supplemental indexes are a combination of environmental and socioeconomic information. There are thirteen EJ indexes and supplemental indexes in EJScreen reflecting the 13 environmental indicators. The indexes for a selected area are compared to those for all other locations in the state or nation. For more information and calculation details on the EJ and supplemental indexes, please visit the [EJScreen website](#).

## EJ INDEXES

The EJ indexes help users screen for potential EJ concerns. To do this, the EJ index combines data on low income and people of color populations with a single environmental indicator.

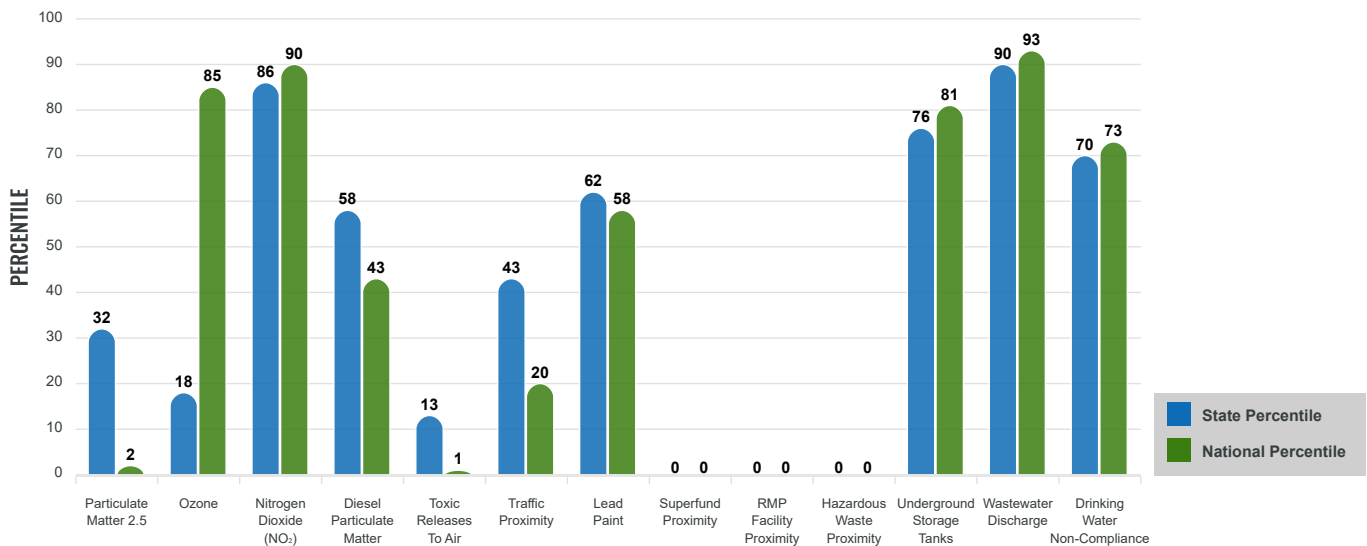
### EJ INDEXES FOR THE SELECTED LOCATION



## SUPPLEMENTAL INDEXES

The supplemental indexes offer a different perspective on community-level vulnerability. They combine data on percent low income, percent persons with disabilities, percent less than high school education, percent limited English speaking, and percent low life expectancy with a single environmental indicator.

### SUPPLEMENTAL INDEXES FOR THE SELECTED LOCATION



Report for 5 miles Ring Centered at 33.194335,-107.306871

Report produced September 25, 2024 using EJScreen Version 2.3

# EJScreen Environmental and Socioeconomic Indicators Data

SELECTED VARIABLES	VALUE	STATE AVERAGE	PERCENTILE IN STATE	USA AVERAGE	PERCENTILE IN USA
<b>ENVIRONMENTAL BURDEN INDICATORS</b>					
Particulate Matter 2.5 (µg/m <sup>3</sup> )	5.11	6.11	22	8.45	1
Ozone (ppb)	62.4	65.3	13	61.8	59
Nitrogen Dioxide (NO <sub>2</sub> ) (ppbv)	11	8.1	76	7.8	79
Diesel Particulate Matter (µg/m <sup>3</sup> )	0.0908	0.187	42	0.191	24
Toxic Releases to Air (toxicity-weighted concentration)	0	29	16	4,600	1
Traffic Proximity (daily traffic count/distance to road)	59,000	730,000	30	1,700,000	13
Lead Paint (% Pre-1960 Housing)	0.16	0.19	60	0.3	43
Superfund Proximity (site count/km distance)	0	0.34	0	0.39	0
RMP Facility Proximity (facility count/km distance)	0	0.2	0	0.57	0
Hazardous Waste Proximity (facility count/km distance)	0	1.2	0	3.5	0
Underground Storage Tanks (count/km <sup>2</sup> )	2.2	2.8	67	3.6	64
Wastewater Discharge (toxicity-weighted concentration/m distance)	2800	990000	81	700000	81
Drinking Water Non-Compliance (points)	0.14	5.6	71	2.2	74
<b>SOCIOECONOMIC INDICATORS</b>					
Demographic Index USA	1.45	N/A	N/A	1.34	62
Supplemental Demographic Index USA	2.35	N/A	N/A	1.64	85
Demographic Index State	1.55	2.16	25	N/A	N/A
Supplemental Demographic Index State	2.04	1.62	74	N/A	N/A
People of Color	30%	62%	10	40%	49
Low Income	41%	39%	54	30%	72
Unemployment Rate	2%	6%	31	6%	30
Limited English Speaking Households	0%	6%	42	5%	56
Less Than High School Education	4%	14%	26	11%	30
Under Age 5	2%	5%	33	5%	27
Over Age 64	38%	20%	91	18%	94

\*Diesel particulate matter index is from the EPA's Air Toxics Data Update, which is the Agency's ongoing, comprehensive evaluation of air toxics in the United States. This effort aims to prioritize air toxics, emission sources, and locations of interest for further study. It is important to remember that the air toxics data presented here provide broad estimates of health risks over geographic areas of the country, not definitive risks to specific individuals or locations. More information on the Air Toxics Data Update can be found at: <https://www.epa.gov/haps/air-toxics-data-update>.

**Sites reporting to EPA within defined area:**

Superfund .....	0
Hazardous Waste, Treatment, Storage, and Disposal Facilities .....	0
Water Dischargers .....	24
Air Pollution .....	7
Brownfields .....	0
Toxic Release Inventory .....	0

**Other community features within defined area:**

Schools .....	2
Hospitals .....	0
Places of Worship .....	2

**Other environmental data:**

Air Non-attainment .....	No
Impaired Waters .....	Yes

Selected location contains American Indian Reservation Lands* .....	No
Selected location contains a "Justice40 (CEJST)" disadvantaged community .....	Yes
Selected location contains an EPA IRA disadvantaged community .....	Yes

*Report for 5 miles Ring Centered at 33.194335,-107.306871  
Report produced September 25, 2024 using EJScreen Version 2.3*

## EJScreen Environmental and Socioeconomic Indicators Data

### HEALTH INDICATORS

INDICATOR	VALUE	STATE AVERAGE	STATE PERCENTILE	US AVERAGE	US PERCENTILE
Low Life Expectancy	24%	19%	88	20%	85
Heart Disease	10.8	5.9	99	5.8	98
Asthma	10.8	11.2	45	10.3	66
Cancer	10.3	6.1	99	6.4	98
Persons with Disabilities	32.8%	17.1%	96	13.7%	99

### CLIMATE INDICATORS

INDICATOR	VALUE	STATE AVERAGE	STATE PERCENTILE	US AVERAGE	US PERCENTILE
Flood Risk	9%	9%	64	12%	61
Wildfire Risk	4%	58%	30	14%	80

### CRITICAL SERVICE GAPS

INDICATOR	VALUE	STATE AVERAGE	STATE PERCENTILE	US AVERAGE	US PERCENTILE
Broadband Internet	23%	20%	65	13%	83
Lack of Health Insurance	5%	10%	24	9%	34
Housing Burden	No	N/A	N/A	N/A	N/A
Transportation Access Burden	Yes	N/A	N/A	N/A	N/A
Food Desert	Yes	N/A	N/A	N/A	N/A

Report for 5 miles Ring Centered at 33.194335,-107.306871

Report produced September 25, 2024 using EJScreen Version 2.3

Location: User-specified point center at 33.194335, -107.306871  
 Ring (buffer): 5-miles radius  
 Description: Mitchell Price NM0250

Summary of ACS Estimates		2018 - 2022
Population		2,519
Population Density (per sq. mile)		35
People of Color Population		765
% People of Color Population		30%
Households		1,156
Housing Units		1,967
Housing Units Built Before 1950		152
Per Capita Income		26,987
Land Area (sq. miles) (Source: SF1)		72.88
% Land Area		98%
Water Area (sq. miles) (Source: SF1)		1.46
% Water Area		2%

	2018 - 2022 ACS Estimates	Percent	MOE (±)
<b>Population by Race</b>			
Total	2,519	100%	456
Population Reporting One Race	2,129	85%	898
White	2,043	81%	420
Black	0	0%	21
American Indian	3	0%	229
Asian	7	0%	38
Pacific Islander	0	0%	13
Some Other Race	75	3%	177
Population Reporting Two or More Races	390	15%	303
Total Hispanic Population	701	28%	404
Total Non-Hispanic Population	1,819		
White Alone	1,754	70%	318
Black Alone	0	0%	24
American Indian Alone	2	0%	229
Non-Hispanic Asian Alone	7	0%	38
Pacific Islander Alone	0	0%	13
Other Race Alone	0	0%	13
Two or More Races Alone	55	2%	93
<b>Population by Sex</b>			
Male	1,284	51%	284
Female	1,235	49%	296
<b>Population by Age</b>			
Age 0-4	60	2%	94
Age 0-17	370	15%	179
Age 18+	2,149	85%	352
Age 65+	949	38%	229

**Data Note:** Detail may not sum to totals due to rounding. Hispanic population can be of any race.

N/A means not available. **Source:** U.S. Census Bureau, American Community Survey (ACS) 2018 - 2022

Location: User-specified point center at 33.194335, -107.306871  
 Ring (buffer): 5-miles radius  
 Description: Mitchell Price NM0250

	2018 - 2022 ACS Estimates	Percent	MOE (±)
<b>Population 25+ by Educational Attainment</b>			
Total	2,011	100%	367
Less than 9th Grade	13	1%	61
9th - 12th Grade, No Diploma	63	3%	125
High School Graduate	700	35%	252
Some College, No Degree	515	26%	188
Associate Degree	260	13%	107
Bachelor's Degree or more	460	23%	222
<b>Population Age 5+ Years by Ability to Speak English</b>			
Total	2,459	100%	442
Speak only English	2,059	84%	397
Non-English at Home <sup>1+2+3+4</sup>	400	16%	292
<sup>1</sup> Speak English "very well"	363	15%	292
<sup>2</sup> Speak English "well"	22	1%	70
<sup>3</sup> Speak English "not well"	8	0%	48
<sup>4</sup> Speak English "not at all"	7	0%	59
<sup>3+4</sup> Speak English "less than well"	15	1%	76
<sup>2+3+4</sup> Speak English "less than very well"	37	1%	95
<b>Limited English Speaking Households*</b>			
Total	2	100%	46
Speak Spanish	1	44%	38
Speak Other Indo-European Languages	1	53%	13
Speak Asian-Pacific Island Languages	0	3%	38
Speak Other Languages	0	0%	13
<b>Households by Household Income</b>			
Household Income Base	1,156	100%	192
< \$15,000	143	12%	116
\$15,000 - \$25,000	147	13%	128
\$25,000 - \$50,000	304	26%	124
\$50,000 - \$75,000	224	19%	109
\$75,000 +	338	29%	194
<b>Occupied Housing Units by Tenure</b>			
Total	1,156	100%	192
Owner Occupied	852	74%	176
Renter Occupied	304	26%	175
<b>Employed Population Age 16+ Years</b>			
Total	2,169	100%	379
In Labor Force	879	41%	347
Civilian Unemployed in Labor Force	14	2%	118
Not In Labor Force	1,291	59%	284

**Data Note:** Detail may not sum to totals due to rounding. Hispanic population can be of anyrace.

N/A means not available. **Source:** U.S. Census Bureau, American Community Survey (ACS)

\*Households in which no one 14 and over speaks English "very well" or speaks English only.

Location: User-specified point center at 33.194335, -107.306871

Ring (buffer): 5-miles radius

Description: Mitchell Price NM0250

	2018 - 2022 ACS Estimates	Percent	MOE (±)
<b>Population by Language Spoken at Home*</b>			
Total (persons age 5 and above)	2,588	100%	520
English	2,115	82%	456
Spanish	430	17%	321
French, Haitian, or Cajun	20	1%	36
German or other West Germanic	10	0%	24
Russian, Polish, or Other Slavic	0	0%	13
Other Indo-European	0	0%	13
Korean	0	0%	13
Chinese (including Mandarin, Cantonese)	0	0%	13
Vietnamese	0	0%	13
Tagalog (including Filipino)	8	0%	38
Other Asian and Pacific Island	0	0%	13
Arabic	0	0%	13
Other and Unspecified	4	0%	36
Total Non-English	474	18%	692

**Data Note:** Detail may not sum to totals due to rounding. Hispanic population can be of any race.  
N/A means not available. **Source:** U.S. Census Bureau, American Community Survey (ACS) 2018 - 2022.  
\*Population by Language Spoken at Home is available at the census tract summary level and up.