



**RECEIVED**

**By PSTB at 8:14 am, May 21, 2020**

May 20, 2020

Ms. Susan von Gonten, Project Manager  
New Mexico Environment Department  
Petroleum Storage Tank Bureau  
2905 Rodeo Park Drive  
Santa Fe, New Mexico 87505

**RE: Sixth Monthly NAPL Recovery Report,  
Fairview Station Site, Española, New Mexico  
Facility #28779                      RID #4657                      WPID #4096-7**

Dear Ms. von Gonten:

Souder, Miller & Associates (SMA) is pleased to submit the sixth monthly NAPL recovery report. This report is submitted in accordance with the workplan dated August 16, 2019 and approved by NMED PSTB on September 30, 2019.

On April 10, 2020, SMA performed the sixth monthly NAPL recovery. Seventeen monitoring wells were gauged for depth to NAPL and depth to water. Of these seventeen wells, eight monitoring wells contained NAPL with apparent thicknesses ranging from 0.20 to 3.95 feet.

After depth to NAPL/water measurements were recorded, NAPL was removed from the wells using an electric NAPL recovery pump and/or hand bailing. The depths to NAPL/water were measured after NAPL was recovered to an approximate minimum thickness. The amounts of NAPL recovered from the monitoring wells ranged from 0 to 3.5 gallons per well. The total amount of NAPL recovered from the eight monitoring wells was 12.5 gallons. To date, approximately 366 gallons of NAPL have been removed from the site.

Overall, apparent NAPL thicknesses had variable trends compared to the previous NAPL recovery event. Five monitoring wells (MW-3, MW-8, MW-14, MW-18, and MW-28) exhibited increases in initial NAPL thickness. Three monitoring wells containing NAPL (MW-2, MW-15, and MW-30) contained less NAPL compared to the previous month. Three wells (MW-11, MW-29, and MW-31) that contained NAPL in March did not contain NAPL in April. Drastic fluctuations in NAPL thicknesses has occurred in multiple wells on several occasions at the site. These fluctuations do not appear to be solely related to groundwater elevation changes as they occur both during periods of rising and falling groundwater elevation.

Figure 1 depicts the apparent NAPL thicknesses and NAPL contours during the April 2020 event. Table 1 presents the initial depth to NAPL and water measurements. Table 2 depicts the NAPL thicknesses before and after recovery with the NAPL amounts recovered.

Ms. Susan von Gonten  
May 20, 2020

If you have any questions, please do not hesitate to call me at 505-473-9211 or e-mail me at [alan.eschenbacher@soudermiller.com](mailto:alan.eschenbacher@soudermiller.com).

Sincerely,  
SOUDER, MILLER & ASSOCIATES



Alan Eschenbacher, P.G.  
Senior Geoscientist

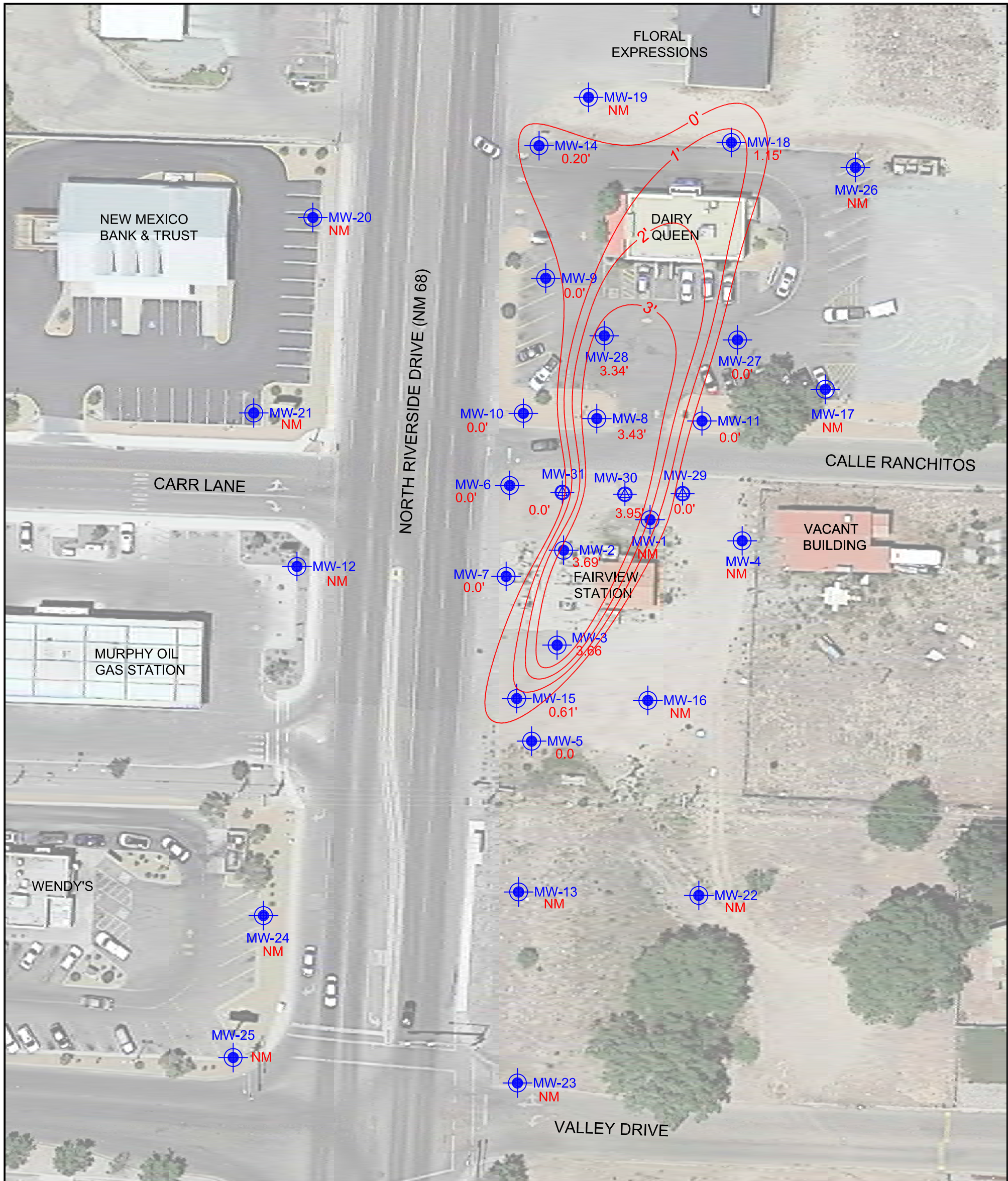
enclosures

Figure 1 – Non-Aqueous Phase Liquid Map – February 13, 2020



Table 1 – Summary of Fluid Gauging Data

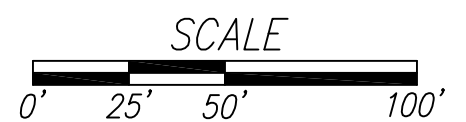
Table 2 – Summary of NAPL Recovery

Field Notes



**LEGEND**

- MW-7  2" MONITORING WELL
- MW-30  4" MONITORING WELL
- 2.89' NAPL THICKNESS IN FEET
- 3' NAPL THICKNESS CONTOUR IN FEET
- NM NOT MEASURED



**SOUDER, MILLER & ASSOCIATES**  
 2904 Rodeo Park Drive East, Bldg 100  
 Santa Fe, NM 87505  
 Phone (505) 473-9211 Toll-Free (800) 460-5366 Fax (505) 471-6675  
 www.soudermiller.com  
 Serving the Southwest & Rocky Mountains  
 Albuquerque, Carlsbad, Farmington, Hobbs, Las Cruces, Roswell, Santa Fe, NM  
 Cortez, Grand Junction, CO - Safford, AZ - Moab, UT - El Paso, TX

**NON-AQUEOUS PHASE LIQUID MAP - APRIL 10, 2020**  
**FAIRVIEW STATION**  
**ESPAÑOLA, NEW MEXICO**

Designed AJE	Drawn AJE	Checked SAM
Date: MAY 2020		
Scale: Horiz: 1" = 50'		
Vert: N/A		
Project No:		
Sheet: <b>Figure 1</b>		

**TABLE 1. SUMMARY OF FLUID GAUGING DATA  
FAIRVIEW STATION, ESPANOLA, NEW MEXICO**

Monitoring Well	Date	Casing Elevation	Depth to NAPL (feet)	NAPL Thickness (feet)	Depth to Water (feet)	Groundwater Elevation (feet)
MW-1	02/27/13	5621.88	14.06	0.34	14.40	5607.74
	06/03/13		13.92	0.28	14.20	5607.89
	06/27/13		14.43	0.37	14.80	5607.36
	07/10/13		14.21	0.24	14.45	5607.61
	10/29/13		13.36	1.89	15.25	5608.05
	11/12/13		15.37	0.46	15.83	5606.40
	11/26/13		13.82	1.08	14.90	5607.79
	10/03/14		14.81	0.04	14.85	5607.06
	12/10/14		15.51	3.20	18.71	5605.57
	01/09/15		14.20	3.49	17.69	5606.81
	01/19/16		13.84	3.93	17.77	5607.06
	07/14/16		14.45	4.70	19.15	5606.26
	07/22/16		15.61	2.45	18.06	5605.66
	11/03/16		14.83	2.40	17.23	5606.45
	07/06/17		15.22	4.07	19.29	5605.64
	03/15/19		Well not found - possibly destroyed			
MW-2	02/27/13	5622.248	13.11	5.45	18.56	5607.78
	06/03/13		13.42	3.97	17.39	5607.84
	06/27/13		13.98	4.22	18.20	5607.21
	07/10/13		13.67	3.83	17.50	5607.62
	10/29/13		12.66	6.02	18.68	5608.08
	11/12/13		14.34	5.06	19.40	5606.64
	11/26/13		12.95	5.61	18.56	5607.90
	10/03/14		14.97	0.08	15.05	5607.26
	12/10/14		15.77	2.87	18.64	5605.76
	01/09/15		14.99	3.74	18.73	5606.32
	01/19/16		14.45	3.60	18.05	5606.90
	07/14/16		15.23	3.88	19.11	5606.05
	07/22/16		14.91	3.57	18.48	5606.45
	11/03/16		15.23	2.52	17.75	5606.39
	07/06/17		16.21	2.85	19.06	5605.33
	03/15/19		15.83	3.46	19.29	5605.55
	03/19/19		14.55	4.60	19.15	5606.55
	11/11/19		13.61	5.22	18.83	5607.33
	12/16/19		14.60	4.14	18.74	5606.61
	01/22/20		13.44	5.10	18.54	5607.53
02/13/20	13.43	5.17	18.60	5607.53		
03/25/20	14.24	4.16	18.40	5606.97		
04/10/20	14.99	3.69	18.68	5606.34		

**TABLE 1. SUMMARY OF FLUID GAUGING DATA  
FAIRVIEW STATION, ESPANOLA, NEW MEXICO**

Monitoring Well	Date	Casing Elevation	Depth to NAPL (feet)	NAPL Thickness (feet)	Depth to Water (feet)	Groundwater Elevation (feet)		
MW-3	02/27/13	5622.241	18.60	-1.91	16.69	5604.12		
	06/03/13		13.46	4.11	17.57	5607.75		
	06/27/13		13.88	4.45	18.33	5607.25		
	07/10/13		13.70	3.98	17.68	5607.55		
	10/29/13		12.50	6.96	19.46	5608.00		
	11/12/13		13.19	7.43	20.62	5607.19		
	11/26/13		13.02	6.00	19.02	5607.72		
	10/03/14		13.96	2.95	16.91	5607.54		
	12/10/14		14.75	7.51	22.26	5605.61		
	01/09/15		13.72	6.90	20.62	5606.80		
	01/19/16		12.69	5.91	18.60	5608.07		
	07/14/16		14.23	7.95	22.18	5606.02		
	07/22/16		14.60	6.48	21.08	5606.02		
	11/03/16		16.29	0.49	16.78	5605.83		
	07/06/17		15.70	3.23	18.93	5605.73		
	03/15/19		15.70	5.03	20.73	5605.28		
	03/19/19		15.55	5.18	20.73	5605.40		
	11/11/19		13.54	5.11	18.65	5607.42		
	12/16/19		Well inaccessible					
	01/22/20		Well inaccessible					
	02/13/20		14.18	3.93	18.11	5607.08		
	03/25/20		14.78	3.62	18.40	5606.56		
04/10/20	15.29	3.66	18.95	5606.04				
MW-4	10/29/13	5622.812	-	-	14.13	5608.68		
	11/12/13		-	-	15.12	5607.69		
	11/26/13		-	-	15.20	5607.61		
	10/03/14		-	-	16.21	5606.60		
	01/09/15		-	-	15.88	5606.93		
	01/19/16		-	-	14.33	5608.48		
	07/14/16		-	-	14.89	5607.92		
	07/22/16		-	-	15.10	5607.71		
	11/03/16		-	-	16.25	5606.56		
	12/21/16		-	-	15.50	5607.31		
	07/06/17		-	-	17.34	5605.47		
	03/15/19		-	-	15.75	5607.06		

**TABLE 1. SUMMARY OF FLUID GAUGING DATA  
FAIRVIEW STATION, ESPANOLA, NEW MEXICO**

Monitoring Well	Date	Casing Elevation	Depth to NAPL (feet)	NAPL Thickness (feet)	Depth to Water (feet)	Groundwater Elevation (feet)
MW-5	10/29/13	5621.609	-	-	13.77	5607.84
	11/12/13		-	-	13.93	5607.68
	11/26/13		-	-	14.07	5607.54
	10/03/14		-	-	14.48	5607.13
	01/09/15		-	-	14.40	5607.21
	01/19/16		-	-	13.62	5607.99
	07/14/16		-	-	14.17	5607.44
	07/22/16		-	-	14.87	5606.74
	11/03/16		-	-	14.86	5606.75
	12/21/16		-	-	14.93	5606.68
	07/06/17		-	-	16.38	5605.23
	03/15/19		-	-	15.12	5606.49
	11/11/19		-	-	14.10	5607.51
	12/16/19		-	-	14.58	5607.03
	01/22/20		-	-	14.29	5607.32
	02/13/20		-	-	14.21	5607.40
	03/25/20		-	-	15.02	5606.59
04/10/20	-	-	15.03	5606.58		
MW-6	10/29/13	5622.01	-	-	13.97	5608.04
	11/12/13		14.39	0.01	14.40	5607.61
	11/26/13		14.31	0.02	14.33	5607.68
	10/03/14		15.60	0.05	15.65	5606.36
	12/10/14		16.20	0.34	16.54	5605.47
	01/09/15		15.58	0.04	15.62	5606.39
	01/19/16		14.99	0.04	15.03	5606.98
	07/14/16		14.34	0.03	14.37	5607.64
	07/22/16		-	-	16.33	5605.68
	11/03/16		15.67	0.01	15.68	5606.34
	07/06/17		-	-	16.59	5605.42
	03/15/19		-	-	15.53	5606.48
	11/11/19		-	-	14.49	5607.52
	12/16/19		-	-	15.29	5606.72
	01/22/20		-	-	14.53	5607.48
	02/13/20		-	-	14.52	5607.49
	03/25/20		-	-	15.09	5606.92
04/10/20	-	-	15.49	5606.52		

**TABLE 1. SUMMARY OF FLUID GAUGING DATA  
FAIRVIEW STATION, ESPANOLA, NEW MEXICO**

Monitoring Well	Date	Casing Elevation	Depth to NAPL (feet)	NAPL Thickness (feet)	Depth to Water (feet)	Groundwater Elevation (feet)
MW-7	10/29/13	5622.09	-	-	14.17	5607.92
	11/12/13		-	-	14.62	5607.47
	11/26/13		-	-	14.50	5607.59
	10/03/14		-	-	15.84	5606.25
	01/09/15		-	-	15.25	5606.84
	01/19/16		-	-	14.00	5608.09
	07/14/16		-	-	14.52	5607.57
	07/22/16		-	-	16.09	5606.00
	11/03/16		-	-	15.77	5606.32
	12/21/16		-	-	15.13	5606.96
	07/06/17		-	-	17.03	5605.06
	03/15/19		-	-	15.78	5606.31
	11/11/19		-	-	14.81	5607.28
	12/16/19		-	-	15.75	5606.34
	01/22/20		-	-	14.65	5607.44
	02/13/20		-	-	14.68	5607.41
	03/25/20		-	-	15.21	5606.88
04/10/20	-	-	15.85	5606.24		
MW-8	10/29/13	5623.10	13.80	3.55	17.35	5608.42
	11/12/13		14.49	6.54	21.03	5606.98
	11/26/13		14.05	4.25	18.30	5607.99
	10/03/14		14.95	2.57	17.52	5607.51
	12/10/14		15.27	6.51	21.78	5606.21
	01/09/15		15.00	6.45	21.45	5606.49
	01/19/16		14.34	4.44	18.78	5607.65
	07/14/16		15.15	6.31	21.46	5606.38
	07/22/16		15.98	6.72	22.70	5605.44
	11/03/16		15.33	5.21	20.54	5606.47
	07/06/17		16.79	4.52	21.31	5605.18
	03/15/19		16.29	3.98	20.27	5605.82
	03/19/19		16.30	4.45	20.75	5605.69
	11/11/19		14.95	3.10	18.05	5607.38
	12/16/19		15.26	4.74	20.00	5606.66
	01/22/20		-	-	14.88	5608.22
	02/13/20		14.95	2.51	17.46	5607.53
03/25/20	15.35	3.20	18.55	5606.95		
04/10/20	15.48	3.43	18.91	5606.77		

**TABLE 1. SUMMARY OF FLUID GAUGING DATA  
FAIRVIEW STATION, ESPANOLA, NEW MEXICO**

Monitoring Well	Date	Casing Elevation	Depth to NAPL (feet)	NAPL Thickness (feet)	Depth to Water (feet)	Groundwater Elevation (feet)
MW-9	10/03/14	5623.105	-	-	16.69	5606.42
	12/10/14		-	-	17.15	5605.96
	01/09/15		-	-	16.46	5606.65
	01/19/16		14.65	0.63	15.28	5608.30
	07/14/16		15.13	0.63	15.76	5607.82
	07/22/16		16.92	0.52	17.44	5606.06
	11/03/16		16.09	0.01	16.10	5607.01
	07/06/17		17.78	0.33	18.11	5605.24
	03/15/19		17.23	0.13	17.36	5605.84
	11/11/19		-	-	15.65	5607.46
	12/16/19		-	-	15.96	5607.15
	01/22/20		-	-	15.39	5607.72
	02/13/20		-	-	14.48	5608.63
	03/25/20		-	-	16.08	5607.03
	04/10/20		-	-	16.28	5606.83
MW-10	10/03/14	5623.073	-	-	16.78	5606.29
	01/09/15		-	-	16.28	5606.79
	01/19/16		Sheen	-	14.89	5608.18
	07/14/16		15.37	0.01	15.38	5607.69
	07/22/16		-	-	17.22	5605.85
	11/03/16		16.23	0.01	16.24	5606.84
	07/06/17		17.93	0.01	17.94	5605.14
	03/15/19		-	-	17.34	5605.73
	05/09/19		-	-	16.73	5606.34
	11/11/19		-	-	15.72	5607.35
	12/16/19		-	-	16.11	5606.96
	01/22/20		-	-	15.47	5607.60
	02/13/20		-	-	15.58	5607.49
	03/25/20		-	-	16.14	5606.93
	04/10/20		-	-	16.57	5606.50



**TABLE 1. SUMMARY OF FLUID GAUGING DATA  
FAIRVIEW STATION, ESPANOLA, NEW MEXICO**

Monitoring Well	Date	Casing Elevation	Depth to NAPL (feet)	NAPL Thickness (feet)	Depth to Water (feet)	Groundwater Elevation (feet)
MW-11	10/03/14	5623.36	15.55	0.16	15.71	5607.77
	12/10/14		16.52	3.63	20.15	5605.94
	01/09/15		15.89	3.36	19.25	5606.63
	01/19/16		15.47	3.66	19.13	5606.98
	07/14/16		16.01	3.09	19.10	5606.58
	07/22/16		17.20	1.50	18.70	5605.79
	11/03/16		16.85	1.21	18.06	5606.21
	07/06/17		17.47	2.35	19.82	5605.31
	03/15/19		17.15	1.93	19.08	5605.73
	03/19/19		17.11	1.77	18.88	5605.81
	11/11/19		15.35	1.74	17.09	5607.58
	12/16/19		16.50	0.91	17.41	5606.64
	01/22/20		15.49	0.33	15.82	5607.79
	02/13/20		-	-	15.51	5607.85
	03/25/20		15.80	1.65	17.45	5607.15
04/10/20	-	-	16.28	5607.08		
MW-12	10/03/14	5622.05	-	-	15.52	5606.53
	12/09/14		-	-	15.94	5606.11
	01/09/15		-	-	15.21	5606.84
	01/19/16		-	-	NM	NM
	07/14/16		-	-	NM	NM
	07/22/16		-	-	NM	NM
	11/03/16		-	-	NM	NM
	12/21/16		-	-	NM	NM
	07/06/17		-	-	NM	NM
	03/15/19		-	-	NM	NM
MW-13	10/03/14	5621.52	-	-	14.81	5606.71
	01/09/15		-	-	14.76	5606.76
	01/19/16		-	-	NM	NM
	07/14/16		-	-	14.24	5607.28
	07/22/16		-	-	14.46	5607.06
	11/03/16		-	-	14.57	5606.95
	12/21/16		-	-	14.87	5606.65
	07/06/17		-	-	16.61	5604.91
03/15/19	-	-	15.13	5606.39		

**TABLE 1. SUMMARY OF FLUID GAUGING DATA  
FAIRVIEW STATION, ESPANOLA, NEW MEXICO**

Monitoring Well	Date	Casing Elevation	Depth to NAPL (feet)	NAPL Thickness (feet)	Depth to Water (feet)	Groundwater Elevation (feet)
MW-14	10/03/14	5622.97	15.76	0.29	16.05	5607.13
	12/10/14		16.38	2.19	18.57	5606.04
	01/09/15		15.96	0.49	16.45	5606.88
	01/19/16		14.40	0.79	15.19	5608.37
	07/14/16		15.23	0.47	15.70	5607.62
	07/22/16		16.68	0.38	17.06	5606.19
	11/03/16		15.90	0.10	16.00	5607.04
	07/06/17		17.46	0.67	18.13	5605.34
	03/15/19		16.68	0.96	17.64	5606.05
	11/11/19		-	-	15.45	5607.52
	12/16/19		-	-	15.95	5607.02
	01/22/20		-	-	15.38	5607.59
	02/13/20		-	-	15.45	5607.52
	03/25/20		16.04	0.02	16.06	5606.91
	04/10/20		16.02	0.20	16.22	5606.75
MW-15	07/14/16	5622.104	14.35	1.59	15.94	5607.36
	07/22/16		15.11	3.44	18.55	5606.13
	11/03/16		15.64	0.01	15.65	5606.46
	07/06/17		16.10	1.21	17.31	5605.70
	03/15/19		15.49	5.14	20.63	5605.33
	03/19/19		15.88	1.61	17.49	5605.82
	11/11/19		13.50	2.94	16.44	5607.87
	12/16/19		15.09	0.65	15.74	5606.85
	01/22/20		14.69	0.43	15.12	5607.31
	02/13/20		14.75	0.01	14.76	5607.35
	03/25/20		15.40	1.02	16.42	5606.45
	04/10/20		15.89	0.61	16.50	5606.06
MW-16	07/14/16	5622.15	-	-	14.54	5607.61
	07/22/16		-	-	15.36	5606.79
	11/03/16		-	-	15.35	5606.80
	12/21/16		-	-	15.17	5606.98
	07/06/17		-	-	16.98	5605.17
	03/15/19		-	-	15.40	5606.75

**TABLE 1. SUMMARY OF FLUID GAUGING DATA  
FAIRVIEW STATION, ESPANOLA, NEW MEXICO**

Monitoring Well	Date	Casing Elevation	Depth to NAPL (feet)	NAPL Thickness (feet)	Depth to Water (feet)	Groundwater Elevation (feet)	
MW-17	07/14/16	5623.46	-	-	15.20	5608.26	
	07/22/16		-	-	16.58	5606.88	
	11/03/16		-	-	16.37	5607.09	
	12/21/16		-	-	15.84	5607.62	
	07/06/17		-	-	17.69	5605.77	
	03/15/19		-	-	16.04	5607.42	
	05/09/19		-	-	16.38	5607.08	
MW-18	07/14/16	5623.49	-	-	15.36	5608.13	
	07/22/16		16.58	0.01	16.59	5606.90	
	11/03/16		16.10	0.01	16.11	5607.38	
	07/06/17		18.05	0.19	18.24	5605.39	
	03/15/19		16.50	2.70	19.20	5606.31	
	11/11/19		15.46	1.06	16.52	5607.76	
	12/16/19		Well inaccessible				
	01/22/20		-	-	15.28	5608.21	
	02/13/20		15.36	0.93	16.29	5607.89	
	03/25/20		-	-	15.99	5607.50	
	04/10/20		15.80	1.15	16.95	5607.40	
	MW-19		07/14/16	5623.58	-	-	15.80
07/22/16		-	-		16.84	5606.74	
11/03/16		-	-		15.94	5607.64	
12/21/16		-	-		16.17	5607.41	
07/06/17		-	-		17.92	5605.66	
03/15/19		-	-		16.34	5607.24	
05/09/19		-	-		15.07	5608.51	
MW-20	07/14/16	5623.18	-	-	15.29	5607.89	
	07/22/16		-	-	15.31	5607.87	
	11/03/16		-	-	15.00	5608.18	
	12/21/16		-	-	15.56	5607.62	
	07/06/17		-	-	16.38	5606.80	
	03/15/19		-	-	16.67	5606.51	

**TABLE 1. SUMMARY OF FLUID GAUGING DATA  
FAIRVIEW STATION, ESPANOLA, NEW MEXICO**

Monitoring Well	Date	Casing Elevation	Depth to NAPL (feet)	NAPL Thickness (feet)	Depth to Water (feet)	Groundwater Elevation (feet)
MW-21	07/14/16	5622.16	-	-	15.47	5606.69
	07/22/16		-	-	15.36	5606.80
	11/03/16		-	-	15.59	5606.57
	12/21/16		-	-	15.68	5606.48
	07/06/17		-	-	16.88	5605.28
	03/15/19		-	-	15.66	5606.50
MW-22	03/15/19	5622.00	-	-	15.46	5606.54
MW-23	03/15/19	5622.19	-	-	15.93	5606.26
MW-24	01/10/20		-	-	14.98	
MW-25	03/15/19		-	-	14.95	
MW-26	03/15/19	5623.98	-	-	16.42	5607.56
MW-27	03/15/19	5622.82	-	-	16.39	5606.43
	05/09/19		-	-	15.07	5607.75
	11/11/19		-	-	15.12	5607.70
	12/16/19		-	-	15.39	5607.43
	01/22/20		-	-	14.89	5607.93
	02/13/20		-	-	15.01	5607.81
	03/25/20		-	-	15.67	5607.15
	04/10/20		-	-	14.43	5608.39
MW-28	03/15/19	5622.75	15.43	3.91	19.34	5606.34
	11/11/19		14.62	2.34	16.96	5607.55
	12/16/19		14.82	3.06	17.88	5607.17
	01/22/20		14.53	0.02	14.55	5608.22
	02/13/20		14.60	1.88	16.48	5607.68
	03/25/20		14.98	3.02	18.00	5607.02
	04/10/20		14.96	3.34	18.30	5606.96

**TABLE 1. SUMMARY OF FLUID GAUGING DATA  
FAIRVIEW STATION, ESPANOLA, NEW MEXICO**

Monitoring Well	Date	Casing Elevation	Depth to NAPL (feet)	NAPL Thickness (feet)	Depth to Water (feet)	Groundwater Elevation (feet)
MW-29	03/22/19	5622.37	15.15	0.09	15.24	5607.20
	05/09/19		15.30	1.71	17.01	5606.64
	11/11/19		14.40	1.95	16.35	5607.48
	12/16/19		15.56	0.73	16.29	5606.63
	01/22/20		14.56	0.39	14.95	5607.71
	02/13/20		-	-	14.69	5607.68
	03/20/20		15.18	0.06	15.24	5607.18
	04/10/20		-	-	15.61	5606.76
MW-30	03/22/19	5621.87	13.73	4.88	18.61	5606.92
	11/11/19		13.26	2.74	16.00	5607.93
	12/16/19		Well inaccessible			
	01/22/20		Well inaccessible			
	02/13/20		Well inaccessible			
	03/20/20		13.75	4.06	17.81	5607.11
	04/10/20		14.46	3.95	18.41	5606.42
MW-31	03/22/19	5621.95	-	-	15.27	5606.68
	05/09/19		15.53	3.24	18.77	5605.61
	11/11/19		13.63	3.17	16.80	5607.53
	12/16/19		14.94	2.28	17.22	5606.44
	01/22/20		14.02	1.63	15.65	5607.52
	02/13/20		-	-	14.23	5607.72
	03/20/20		14.67	1.41	16.08	5606.93
	04/10/20		-	-	15.27	5606.68

NOTES:

Data collected before 2018 (in italics) collected by previous consultants.

**RED** = Indicates measurement taken after skimmer or sock removed; measurement not representative

NAPL = Nonaquious phase liquid

NA = Not applicable

NM = Not measured

**TABLE 2. SUMMARY OF NAPL RECOVERY  
FAIRVIEW STATION, ESPANOLA, NEW MEXICO**

Monitor Well	Date Recovered	NAPL Thickness Prior to Bailing <sup>1</sup>	NAPL Thickness After Bailing <sup>1</sup>	Total NAPL Recovered <sup>2</sup>	Comments
MW-1	02/01/13	NM	NM	0.00	
	02/04/13	NM	NM	0.00	
	02/27/13	0.34	NM	0.00	
	06/03/13	0.28	NM	0.50	
	06/27/13	0.37	NM	0.10	
	07/10/13	0.24	NM	0.00	
	10/29/13	1.89	NM	1.50	
	11/12/13	0.46	NM	0.30	
	11/26/13	1.08	NM	0.30	
	10/03/14	0.04	NM	0.00	
	12/10/14	3.20	NM	NM	
	01/09/15	3.49	NM	NM	
	01/19/16	3.93	1.21	4.50	
	07/14/16	4.70	0.01	3.25	set skimmer
	07/22/16	2.45	1.55	3.25	skimmer 1/2 full
	07/28/16	4.55	0.16	3.00	skimmer 1/2 full
	08/04/16	4.87	0.94	5.00	skimmer 1/2 full
	08/11/16	4.75	0.80	4.00	skimmer 1/2 full
	08/18/16	4.80	0.75	3.50	skimmer 1/2 full
	08/31/16	4.48	0.05	3.00	skimmer 1/2 full
	09/15/16	3.68	0.01	1.50	skimmer 1/2 full
	09/22/16	0.83	0.11	0.75	skimmer 1/2 full
	10/06/16	2.34	0.01	1.25	skimmer 1/2 full
10/21/16	1.12	0.27	0.75	skimmer 1/2 full	
11/03/16	2.40	0.10	1.50	skimmer 1/2 full	
07/06/17	4.07	2.31	7.50	skimmer 3/4 full; ~3 inches water	
03/15/19				Well not found - presumed destroyed	

**TABLE 2. SUMMARY OF NAPL RECOVERY  
FAIRVIEW STATION, ESPANOLA, NEW MEXICO**

Monitor Well	Date Recovered	NAPL Thickness Prior to Bailing <sup>1</sup>	NAPL Thickness After Bailing <sup>1</sup>	Total NAPL Recovered <sup>2</sup>	Comments
MW-2	02/01/13	NM	NM	4.50	
	02/04/13	NM	NM	5.00	
	02/27/13	5.45	NM	0.00	
	06/03/13	3.97	NM	4.50	
	06/27/13	4.22	NM	3.00	
	07/10/13	3.83	NM	2.50	
	10/29/13	6.02	NM	3.50	
	11/12/13	5.06	NM	2.80	
	11/26/13	5.61	NM	3.00	
	10/03/14	0.08	NM	0.00	
	12/10/14	2.87	NM	NM	
	01/09/15	3.74	NM	NM	
	01/19/16	3.60	0.85	3.75	
	07/14/16	3.88	0.01	2.75	set skimmer
	07/22/16	3.57	0.06	2.50	skimmer full
	07/28/16	3.59	0.18	2.25	skimmer full
	08/04/16	3.00	0.36	3.00	skimmer full
	08/11/16	3.41	0.27	3.00	skimmer full
	08/18/16	3.07	0.38	3.00	skimmer full
	08/31/16	5.36	0.26	2.50	skimmer full
	09/15/16	5.30	0.24	3.00	skimmer full
	09/22/16	3.88	0.26	2.25	skimmer full
	10/06/16	4.30	0.20	2.50	skimmer full
	10/21/16	2.94	0.01	2.25	skimmer 1/2 full
	11/03/16	2.52	0.15	2.00	skimmer full
	07/06/17	2.85	0.35	2.00	skimmer full; 1/4 NAPL, 3/4 water, soaked filter in NAPL
	03/15/19	3.46	0.88	5.25	skimmer full; 1/5 NAPL, 4/5 water
	03/19/19	4.60	0.70	5.5	skimmer full
	11/11/19	5.22	0.77	3.1	skimmer nearly full, poor interface
	12/16/19	4.19	0.97	3.75	skimmer full
01/22/20	5.10	2.29	3.33	skimmer full	
02/13/20	5.17	1.00	5.25	skimmer full	
03/25/20	4.16	0.00	4.75	skimmer full	
04/10/20	3.69	0.66	2.75	skimmer full	

**TABLE 2. SUMMARY OF NAPL RECOVERY  
FAIRVIEW STATION, ESPANOLA, NEW MEXICO**

Monitor Well	Date Recovered	NAPL Thickness Prior to Bailing <sup>1</sup>	NAPL Thickness After Bailing <sup>1</sup>	Total NAPL Recovered <sup>2</sup>	Comments	
MW-3	02/01/13	NM	NM	0.50		
	02/04/13	NM	NM	2.00		
	02/27/13	2.89	NM	0.00		
	06/03/13	4.11	NM	4.50		
	06/27/13	4.45	NM	3.50		
	07/10/13	3.98	NM	3.00		
	10/29/13	6.96	NM	7.00		
	11/12/13	7.43	NM	5.00		
	11/26/13	6.00	NM	4.30		
	10/03/14	2.95	NM	0.00		
	12/10/14	7.51	NM	NM		
	01/09/15	6.90	NM	NM		
	01/19/16	5.91	1.10	5.00		
	07/14/16	7.95	0.01	5.50	set skimmer	
	07/22/16	6.48	0.15	5.50	skimmer full of water only	
	07/28/16	6.41	0.17	3.00	skimmer full of water only; soaked filter in NAPL	
	08/04/16	3.57	0.47	3.00	skimmer full of water only; replaced skimmer with skimmer from MW-11	
	08/11/16	3.10	0.28	3.00	skimmer full	
	08/18/16	2.78	0.20	2.50	skimmer full	
	08/31/16	3.12	0.13	2.25	skimmer full	
	09/15/16	3.82	0.24	2.50	skimmer full	
	09/22/16	1.81	0.07	1.25	skimmer full	
	10/06/16	1.49	0.11	1.00	skimmer full	
	10/21/16	0.70	0.01	0.50	skimmer 1/3 full	
	11/03/16	0.49	0.10	0.25	skimmer 1/2 full	
	07/06/17	3.23	0.01	1.50	skimmer full	
	03/15/19	5.03	0.08	2.75	skimmer full	
	03/19/19	5.18	0.17	2.0	skimmer full	
	11/11/19	5.11	0.34	2.15	skimmer full, bailed	
	12/16/19	Well inaccesssible - NAPL not recovered				
	01/22/20	Well inaccesssible - NAPL not recovered				
	02/13/20	3.93	0.04	4.25	skimmer full	
03/25/20	3.62	0.00	2.75	skimmer full		
04/10/20	3.66	0.00	2.25	skimmer full		



**TABLE 2. SUMMARY OF NAPL RECOVERY  
FAIRVIEW STATION, ESPANOLA, NEW MEXICO**

Monitor Well	Date Recovered	NAPL Thickness Prior to Bailing <sup>1</sup>	NAPL Thickness After Bailing <sup>1</sup>	Total NAPL Recovered <sup>2</sup>	Comments
MW-6	10/29/13	-	-	0.00	
	11/12/13	0.01	NM	0.00	
	11/26/13	0.02	NM	0.00	
	10/03/14	0.05	NM	0.00	
	12/10/14	0.34	NM	0.00	
	01/09/15	0.04	NM	0.00	
	01/19/16	0.04	0.00	negligible	
	07/14/16	0.03	0.00	negligible	set new sock
	07/22/16	0.00	-	0.01	2 inches of staining; set new sock
	07/28/16	0.00	-	0.00	no staining; reset same sock
	08/04/16	0.00	-	0.08	16 inches of staining; set new sock
	08/11/16	0.00	-	0.08	16 inches of staining; set new sock
	08/18/16	0.01	-	0.08	16 inches of staining; set new sock
	08/31/16	0.01	-	0.07	14 inches of staining; set new sock
	09/15/16	0.00	-	0.06	11 inches of staining; set new sock
	09/22/16	0.01	-	0.00	no staining; reset same sock
	10/06/16	0.01	-	0.04	8 inches of staining; set new sock
	10/21/16	0.00	-	0.01	1 inch of staining; set new sock
	11/03/16	0.01	-	0.06	12 inchs of staining; set new sock
	07/06/17	-	-	0.1	20 inchs of staining; set new sock
	03/15/19	0.00	-	0.0	removed sock
	12/16/19	0.00	-	0.0	
	01/22/20	0.00	-	0.0	
	02/13/20	0.00	-	0.0	
03/25/20	0.00	-	0.0		
04/10/20	0.00	-	0.0		

**TABLE 2. SUMMARY OF NAPL RECOVERY  
FAIRVIEW STATION, ESPANOLA, NEW MEXICO**

Monitor Well	Date Recovered	NAPL Thickness Prior to Bailing <sup>1</sup>	NAPL Thickness After Bailing <sup>1</sup>	Total NAPL Recovered <sup>2</sup>	Comments
MW-8	10/29/13	3.55	NM	2.50	
	11/12/13	6.54	NM	3.00	
	11/26/13	4.25	NM	3.50	
	10/03/14	2.57	NM	0.00	
	12/10/14	6.51	NM	NM	
	01/09/15	6.45	NM	NM	
	01/19/16	4.44	0.55	3.25	
	07/14/16	6.31	0.01	3.00	set skimmer
	07/22/16	6.72	0.10	3.00	skimmer 3/4 full
	07/28/16	6.88	0.13	1.75	skimmer full
	08/04/16	3.72	0.17	3.00	skimmer full
	08/11/16	6.05	0.06	3.00	skimmer full
	08/18/16	6.41	0.04	3.00	skimmer full
	08/31/16	3.86	0.30	2.50	skimmer 1/3 full of NAPL, 2/3 full water; soaked filter in NAPL
	09/15/16	4.36	0.15	2.50	skimmer 1/2 full of NAPL, 1/2 full water; removed skimmer
	09/22/16	5.91	0.05	2.25	
	10/06/16	6.57	0.20	2.25	
	10/21/16	6.09	0.05	2.00	
	11/03/16	5.21	0.07	2.00	
	07/06/17	4.52	0.24	1.00	
	03/15/19	3.98	0.08	1.75	
	03/19/19	4.45	0.35	1.5	
	11/11/19	3.10	0.01	2.0	
12/16/19	4.74	0.01	2.0		
01/22/20	0.00	-	0.0		
02/13/20	2.51	0.33	1.5		
03/25/20	3.20	0.00	1.5		
04/10/20	3.43	0.00	2.0		
MW-9	10/03/14	-	-	0.00	
	12/10/14	-	-	0.00	
	01/09/15	-	-	0.00	
	01/19/16	0.63	0.01	negligible	
	07/14/16	0.63	0.01	0.25	set new sock
	07/22/16	0.52	0.11	0.31	1 foot of staining; set new sock
	07/28/16	0.01	-	0.12	2 feet of staining; set new sock
	08/04/16	0.01	-	0.08	16 inches of staining; set new sock
	08/11/16	0.00	-	0.00	no staining; reset same sock
	08/18/16	0.00	-	0.07	13 inches of staining; set new sock
	08/31/16	0.01	-	0.06	11 inches of staining; set new sock
	09/15/16	0.00	-	0.00	no staining; reset same sock
	09/22/16	0.00	-	0.00	no staining; reset same sock
	10/06/16	0.00	-	0.03	6 inches of staining; set new sock
	10/21/16	0.01	-	0.01	2 inches of staining; set new sock
	11/03/16	0.01	-	0.05	9 inches of staining; set new sock
	07/06/17	0.33	0.01	0.09	17 inches of staining; set new sock
	03/15/19	0.13	0.01	negligible	removed sock
	11/11/19	0.00	-	0.0	
	12/16/19	0.00	-	0.0	
01/22/20	0.00	-	0.0		
02/13/20	0.00	-	0.0		
03/25/20	0.00	-	0.0		
04/10/20	0.00	-	0.0		

**TABLE 2. SUMMARY OF NAPL RECOVERY  
FAIRVIEW STATION, ESPANOLA, NEW MEXICO**

Monitor Well	Date Recovered	NAPL Thickness Prior to Bailing <sup>1</sup>	NAPL Thickness After Bailing <sup>1</sup>	Total NAPL Recovered <sup>2</sup>	Comments
MW-10	10/03/14	-	-	0.00	
	12/09/14	Lost Data		0.00	
	01/09/15	-	-	0.00	
	01/19/16	Sheen		0.00	
	07/14/16	0.01	-	0.00	set new sock
	07/22/16	0.00	-	0.07	14 inches of staining; set new sock
	07/28/16	0.00	-	0.06	1 foot of staining; set new sock
	08/04/16	0.00	-	0.00	no staining; reset same sock
	08/11/16	0.00	-	0.06	1 foot of staining; set new sock
	08/18/16	0.00	-	0.06	11 inches of staining; set new sock
	08/31/16	0.00	-	0.06	11 inches of staining; set new sock
	09/15/16	0.00	-	0.02	4.5 inches of staining; set new sock
	09/22/16	0.00	-	0.00	no staining; reset same sock
	10/06/16	0.00	-	0.03	5 inches of staining; set new sock
	10/21/16	0.00	-	0.00	no staining; reset same sock
	11/03/16	0.01	-	0.03	6 inches of staining; set new sock
	07/06/17	0.01	-	0.07	13 inches of staining; set new sock
	03/15/19	0.00	-	0.0	removed sock
	11/11/19	0.00	-	0.0	
	12/16/19	0.00	-	0.0	
01/22/20	0.00	-	0.0		
02/13/20	0.00	-	0.0		
03/25/20	0.00	-	0.0		
04/10/20	0.00	-	0.0		
MW-11	10/03/14	0.16	NM	0.00	
	12/10/14	3.63	NM	NM	
	01/09/15	3.36	NM	NM	
	01/19/16	3.66	0.62	2.75	
	07/14/16	3.09	0.01	2.00	set skimmer
	07/22/16	1.50	0.16	1.25	skimmer full
	07/28/16	0.25	0.01	0.10	skimmer 1/2 full
	08/04/16	0.18	0.01	0.25	skimmer 1/2 full; removed skimmer; installed sock
	08/11/16	0.26	0.01	0.06	1 foot of staining; set new sock
	08/18/16	0.36	0.01	0.08	15 inches of staining; set new sock
	08/31/16	0.20	0.01	0.09	18 inches of staining; set new sock
	09/15/16	0.52	0.01	0.06	11 inches of staining; set new sock
	09/22/16	0.85	0.05	0.29	7 inches of staining; set new sock
	10/06/16	1.88	0.09	0.79	8 inches of staining; set new sock
	10/21/16	1.74	0.05	0.77	3 inches of staining; set new sock
	11/03/16	1.21	0.01	0.29	7 inches of staining; set new sock
	07/06/17	2.35	1.43	5.02	3.5 inches of staining; set new sock
	03/15/19	1.93	0.50	2.0	sock removed
	03/19/19	1.77	0.40	1.5	
	11/11/19	1.74	0.27	1.2	
12/16/19	0.91	0.20	0.5		
01/22/20	0.33	0.00	0.05		
02/13/20	0.00	-	0.00		
03/25/20	1.65	0.10	1.50		
04/10/20	0.00	-	0.00		

**TABLE 2. SUMMARY OF NAPL RECOVERY  
FAIRVIEW STATION, ESPANOLA, NEW MEXICO**

Monitor Well	Date Recovered	NAPL Thickness Prior to Bailing <sup>1</sup>	NAPL Thickness After Bailing <sup>1</sup>	Total NAPL Recovered <sup>2</sup>	Comments
MW-14	10/03/14	0.29	NM	0.00	
	12/10/14	2.19	NM	NM	
	01/09/15	0.49	NM	NM	
	01/19/16	0.79	0.01	0.25	
	07/14/16	0.47	0.01	0.10	set new sock
	07/22/16	0.38	0.19	0.33	16 inches of staining; set new sock
	07/28/16	0.12	0.01	0.10	19 inches of staining; set new sock
	08/04/16	0.01	-	0.01	2 inches of staining; set new sock
	08/11/16	0.00	-	0.02	3 inches of staining; set new sock
	08/18/16	0.01	-	0.07	14 inches of staining; set new sock
	08/31/16	0.00	-	0.06	11 inches of staining; set new sock
	09/15/16	0.01	-	0.02	4 inches of staining; set new sock
	09/22/16	0.01	-	0.02	4 inches of staining; set new sock
	10/06/16	0.05	0.00	0.03	6 inches of staining; set new sock
	10/21/16	0.12	0.01	0.01	2 inches of staining; set new sock
	11/03/16	0.10	0.01	0.07	13 inches of staining; set new sock
	07/06/17	0.67	0.01	0.05	10 inches of staining; set new sock
	03/15/19	0.96	0.1	0.5	sock removed
	11/11/19	0.00	-	0.0	
	12/16/19	0.00	-	0.0	
01/22/20	0.00	-	0.0		
02/13/20	0.00	-	0.0		
03/25/20	0.00	-	0.0		
04/10/20	0.20	-	0.0		
MW-15	07/14/16	1.59	0.01	1.50	
	07/22/16	3.44	0.87	2.50	
	07/28/16	0.73	0.01	0.25	set new sock
	08/04/16	0.60	0.03	0.93	3 feet of staining; set new sock
	08/11/16	0.32	0.04	0.00	no staining; reset same sock
	08/18/16	1.05	0.01	0.15	30 inches of staining; set new sock
	08/31/16	0.06	0.00	0.15	29 inches of staining; set new sock
	09/15/16	0.13	0.01	0.10	19 inches of staining; set new sock
	09/22/16	0.08	0.01	0.08	16 inches of staining; set new sock
	10/06/16	0.20	0.01	0.08	16 inches of staining; set new sock
	10/21/16	0.27	0.01	0.04	8.5 inches of staining; set new sock
	11/03/16	0.01	-	0.03	5 inches of staining; set new sock
	07/06/17	1.21	-	0.54	7 inches of staining; set new sock
	03/15/19	5.14	0.21	4.25	removed sock
	03/19/19	1.61	0.24	0.75	
	11/11/19	2.94	0.03	1.0	Bailed
	12/16/19	0.65	0.31	0.5	
	01/22/20	0.43	0.28	0.2	Bailed
02/13/20	0.01	0.00	0.0		
03/25/20	1.02	0.00	0.5	Bailed	
04/10/20	0.61	0.00	0.25	Bailed	

**TABLE 2. SUMMARY OF NAPL RECOVERY  
FAIRVIEW STATION, ESPANOLA, NEW MEXICO**

Monitor Well	Date Recovered	NAPL Thickness Prior to Bailing <sup>1</sup>	NAPL Thickness After Bailing <sup>1</sup>	Total NAPL Recovered <sup>2</sup>	Comments	
MW-18	07/22/16	0.01	-	0.00	set new sock	
	07/28/16	0.00	-	0.08	15 inches of staining; set new sock	
	08/04/16	0.00	-	0.00	no staining; reset same sock	
	08/11/16	0.00	-	0.09	18 inches of staining; set new sock	
	08/18/16	0.00	-	0.11	21 inches of staining; set new sock	
	08/31/16	0.00	-	0.09	18 inches of staining; set new sock	
	09/15/16	0.00	-	0.09	17 inches of staining; set new sock	
	09/22/16	0.00	-	0.00	no staining; reset same sock	
	10/06/16	0.01	-	0.03	6 inches of staining; set new sock	
	10/21/16	0.00	-	0.02	3 inches of staining; set new sock	
	11/03/16	0.01	-	0.09	18 inches of staining; set new sock	
	07/06/17	0.19	0.01	0.04	8 inches of staining; set new sock	
	03/15/19	2.70	0.02	0.75	removed sock	
	11/11/19	1.06	0.11	1.3		
	12/16/19	Well inaccessible - NAPL not recovered				
	01/22/20	0.00	-	0.0		
	02/13/20	0.93	0.0	0.5		
03/25/20	0.00	-	0.0			
04/10/20	1.15	0.15	0.5			
MW-28	03/15/19	3.91	0.5	2.5		
	11/11/19	2.34	0.0	2.0		
	12/16/19	3.06	0.0	1.5		
	01/22/20	0.02	0.0	0.0		
	02/13/20	1.88	0.0	2.0		
	03/25/20	3.02	0.26	2.5		
04/10/20	3.34	0.0	1.25			
MW-29	03/22/19	0.09	-	0.0		
	11/11/19	1.95	0.42	2.9		
	12/16/19	0.73	0.30	0.75		
	01/22/20	0.39	0.04	0.66		
	02/13/20	0.00	-	0.00		
	03/20/20	0.06	-	0.00		
04/10/20	0.00	-	0.00			
MW-30	03/22/19	4.88	-	0.00		
	11/11/19	2.74	2.04	3.75	Poor interface signal	
	12/16/19	Well inaccessible - NAPL not recovered				
	01/22/20	Well inaccessible - NAPL not recovered				
	02/13/20	Well inaccessible - NAPL not recovered				
	03/20/20	4.06	0.64	6.0		
04/10/20	3.95	0.00	3.5			
MW-31	11/11/19	3.17	1.61	4.7	Poor interface signal	
	12/16/19	2.28	0.67	2.5		
	01/22/20	1.63	0.00	2.33		
	02/13/20	0.00	-	0.00		
	03/20/20	1.41	0.46	3.00		
	04/10/20	0.00	-	0.00		
<b>Total NAPL Recovered April 2020</b>				<b>12.50</b>		
<b>Cumulative Total NAPL Recovered</b>				<b>366.64</b>		

NOTES:

NAPL - Non Aqueous Phase Liquid

<sup>1</sup> Measured in feet.

<sup>2</sup> Measured in gallons.

Absorbent sock capacity = 0.005 gallons per inch

All NAPL recovered is placed in a drum located at the Fairview Station Site in Espanola, NM.

Fairview Station State Lead

Job # 3426622

Date: 4/10/20 Time On-site: 0940

Weather conditions: Clear, ~65°F Staff: C. Parker + E. Mayle

Equipment Used: Tornado, Napl Sander, Bucket

NAPL Measurement and Recovery Data							
MW ID	Initial Measurements		Gallons Recovered		Final Measurements		Remarks
	DTP	DTW	Skimmer	Bail/Pump	DTP	DTW	
MW-2	14.99	18.68	1/3	2 1/2	15.89	16.55	
MW-3	15.29	18.95	1/3	2	-	16.75	
MW-5	-	15.05	<hr/>				
MW-6	-	15.49	<hr/>				
MW-7	-	15.85	<hr/>				
MW-8	15.48	18.91		2g	-	17.00	
MW-9	-	16.28	<hr/>				
MW-10	-	16.57	<hr/>				
MW-11	-	16.28	<hr/>				checked w/ sander multiple times
MW-14	16.02	16.22	<hr/>				< 3"
MW-15	15.89	16.50	-	0.25	-	15.99	
MW-18	15.80	16.95	-	1/2	16.35	16.50	
MW-27	-	14.43	<hr/>				
MW-28	14.96	18.30	-	1 1/4		15.50	
MW-29	<del>15.29</del>	15.61	<hr/>				checked / cleaned sander
MW-30	14.46	18.41	-	3 1/2	-	15.41	
MW-31	-	15.27	<hr/>				checked w/ sander again ef

Notes:

82006,  
504.1