

East Microgrid: EJSscreen MAP 4-miles– Long/Lat: 31.8183, -106.6792

EJSscreen Environmental Justice Screening and Mapping Tool (Version 2.3) [Share data feedback](#) | [Mobile](#) | [Glossary](#) | [Help](#)

This is an unofficial copy of EJSscreen hosted by the Public Environmental Data Partners. Some links and text may incorrectly suggest that this site is affiliated with the US Government.

Add Maps & Data

Additional Demographics

Boundaries

Measure

Print

Save Session

Side by Side Map Comparisons

Threshold Map

Multisite Tool

31.8183, -106.6792

Map Contents

- NM State Colonias
- Tribal Cession Boundaries
- Other Indigenous Areas
 - Alaska Native Regional Corporations
 - State-recognized Reservations
 - Hawaiian Native Home Lands
 - State-designated Tribal Statistical Areas

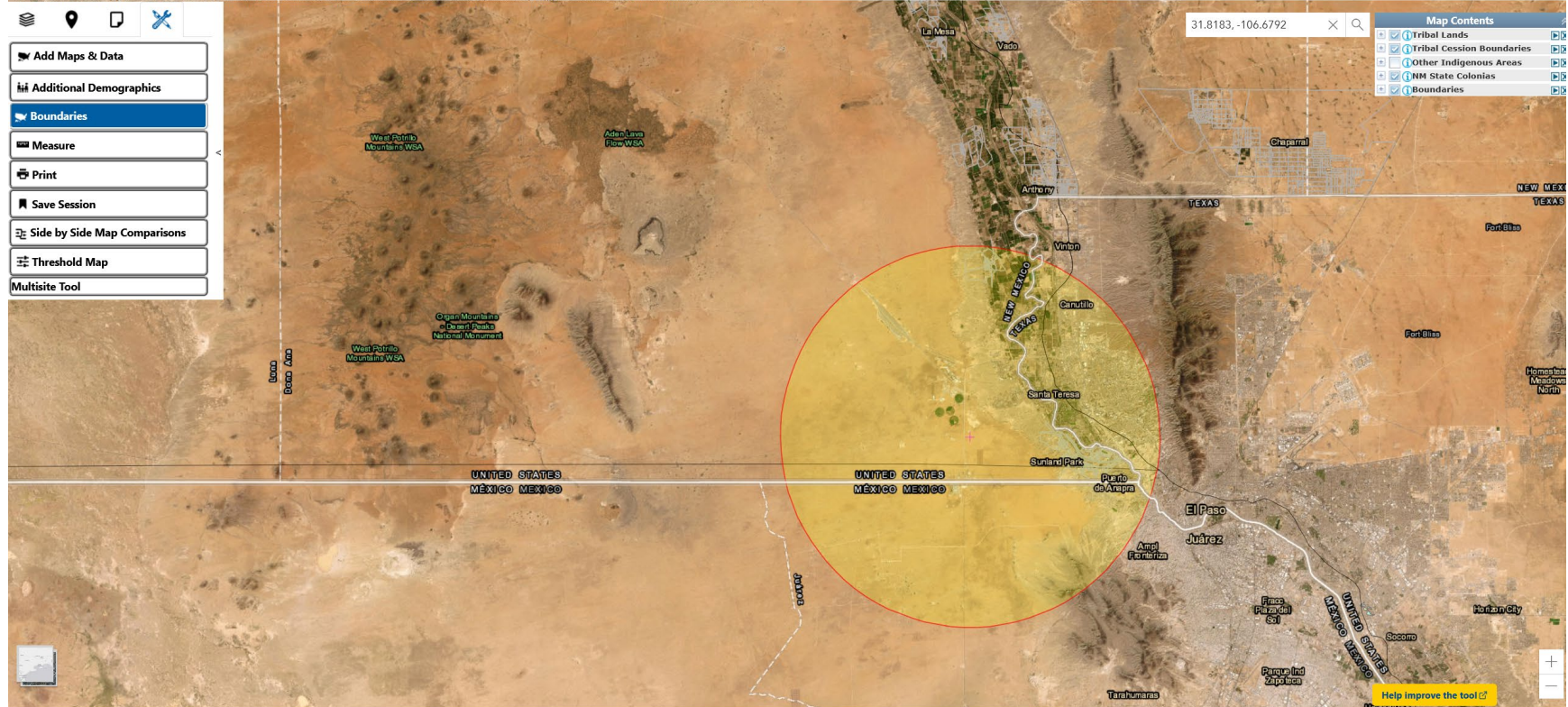
[Help improve the tool](#)

East Microgrid: EJSscreen MAP 10-miles– Long/Lat: 31.8183, -106.6792

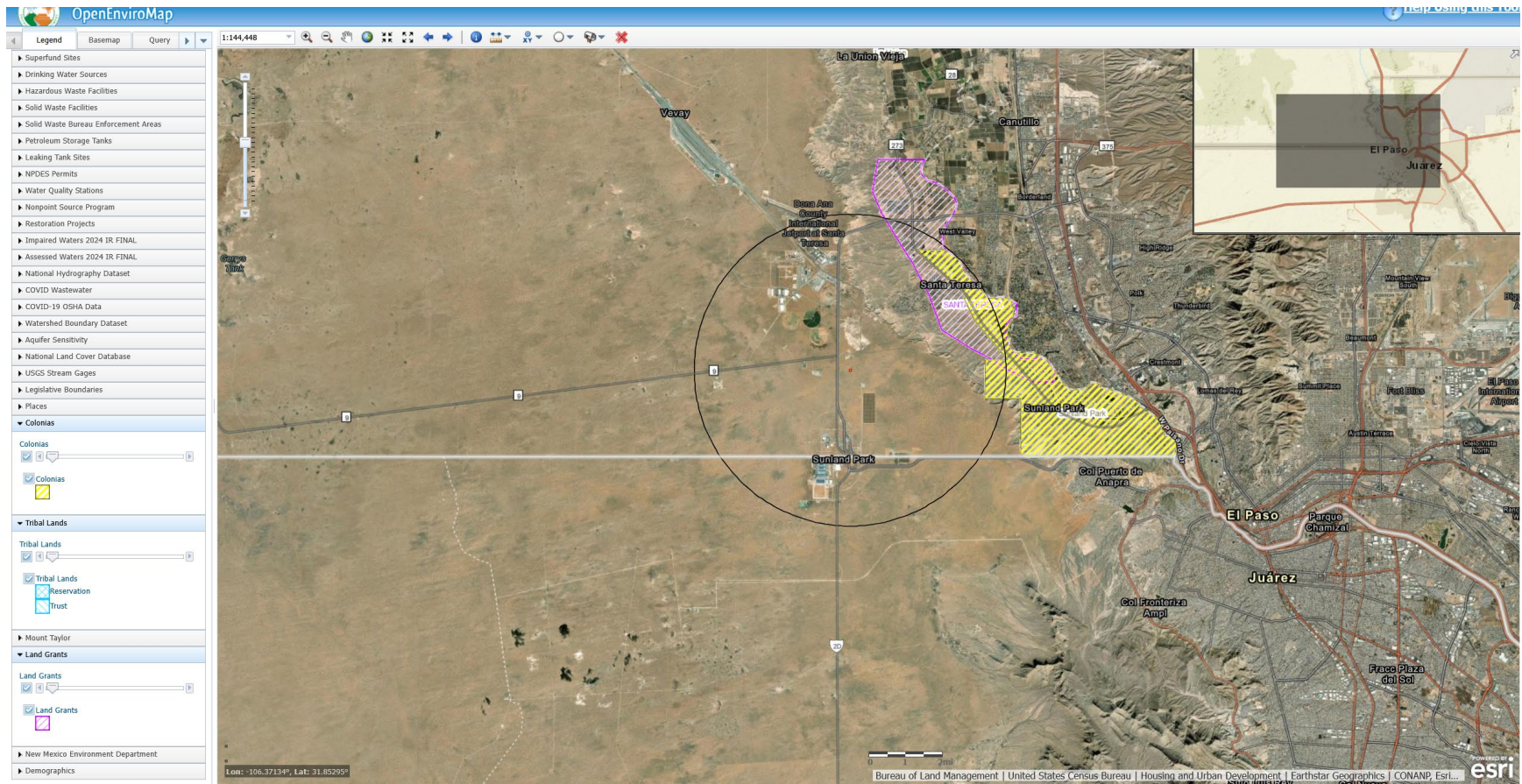
EJSscreen Environmental Justice Screening and Mapping Tool (Version 2.3)

[Share data feedback](#) | [Mobile](#) | [Glossary](#) | [Help](#)

This is an unofficial copy of EJSscreen hosted by the [Public Environmental Data Partners](#). Some links and text may incorrectly suggest that this site is affiliated with the US Government.



East Microgrid: New Mexico OpenEnviroMap 4-miles- Long/Lat: 31.8183, -106.6792



East Microgrid: New Mexico OpenEnviroMap 10-miles- Long/Lat: 31.8183, -106.6792

