

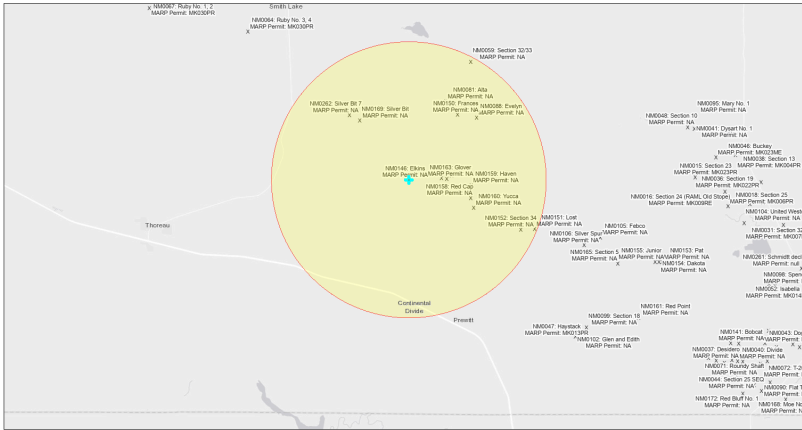


EJScreen Community Report

This report provides environmental and socioeconomic information for user-defined areas, and combines that data into environmental justice and supplemental indexes.

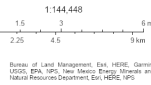
Elkins NM0146

5 miles Ring Centered at 35.428429,-108.056116
 Population: 929
 Area in square miles: 78.53

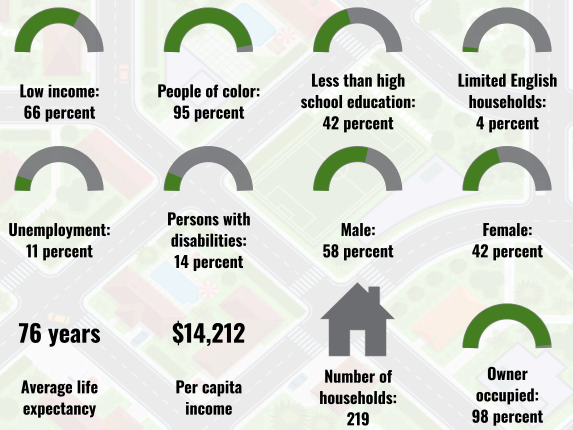


September 24, 2024

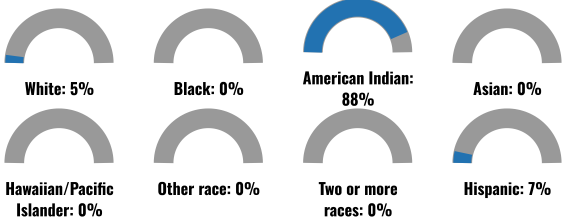
* Elkins NM0146
 * Abandoned Uranium Mines



COMMUNITY INFORMATION



BREAKDOWN BY RACE



BREAKDOWN BY AGE



LIMITED ENGLISH SPEAKING BREAKDOWN



LANGUAGES SPOKEN AT HOME

LANGUAGE	PERCENT
No language data available.	

Notes: Numbers may not sum to totals due to rounding. Hispanic population can be of any race. Source: U.S. Census Bureau American Community Survey (ACS) 2018-2022. Life expectancy data comes from the Centers for Disease Control.

Report for 5 miles Ring Centered at 35.428429,-108.056116
 Report produced September 24, 2024 using EJScreen Version 2.3

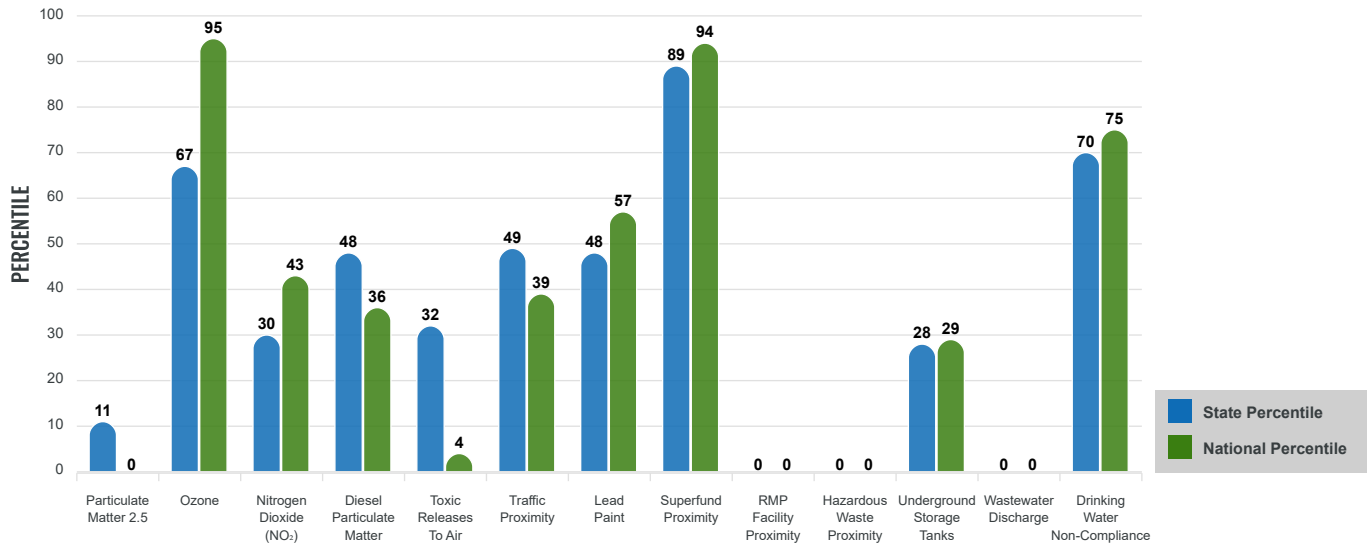
Environmental Justice & Supplemental Indexes

The environmental justice and supplemental indexes are a combination of environmental and socioeconomic information. There are thirteen EJ indexes and supplemental indexes in EJScreen reflecting the 13 environmental indicators. The indexes for a selected area are compared to those for all other locations in the state or nation. For more information and calculation details on the EJ and supplemental indexes, please visit the [EJScreen website](#).

EJ INDEXES

The EJ indexes help users screen for potential EJ concerns. To do this, the EJ index combines data on low income and people of color populations with a single environmental indicator.

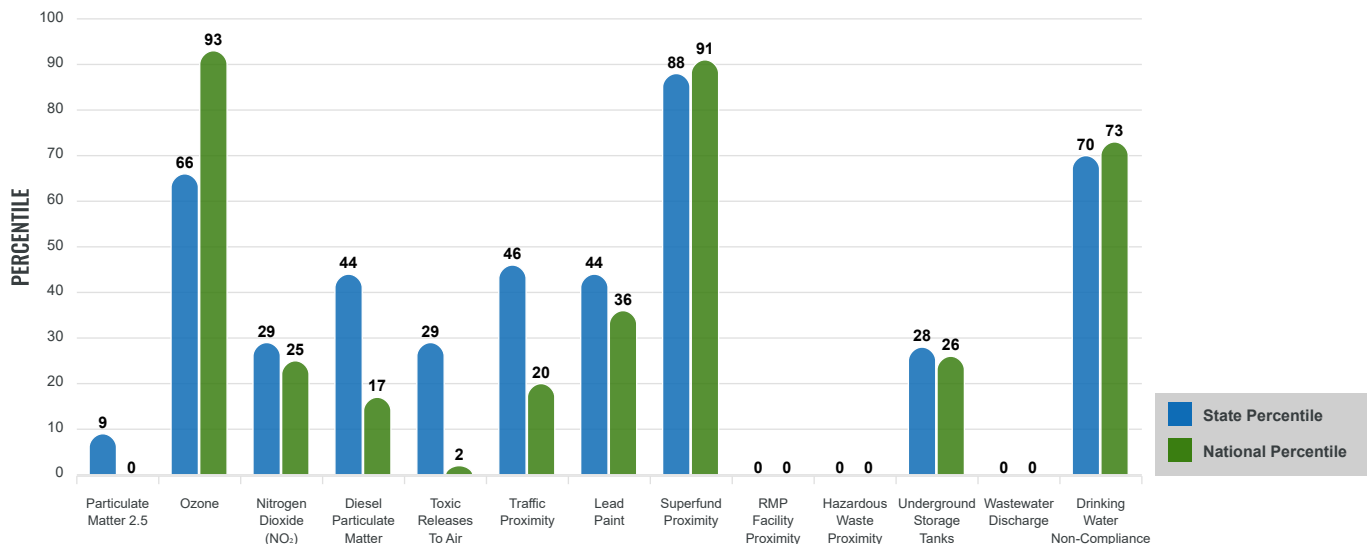
EJ INDEXES FOR THE SELECTED LOCATION



SUPPLEMENTAL INDEXES

The supplemental indexes offer a different perspective on community-level vulnerability. They combine data on percent low income, percent persons with disabilities, percent less than high school education, percent limited English speaking, and percent low life expectancy with a single environmental indicator.

SUPPLEMENTAL INDEXES FOR THE SELECTED LOCATION



Report for 5 miles Ring Centered at 35.428429,-108.056116
 Report produced September 24, 2024 using EJScreen Version 2.3

EJScreen Environmental and Socioeconomic Indicators Data

SELECTED VARIABLES	VALUE	STATE AVERAGE	PERCENTILE IN STATE	USA AVERAGE	PERCENTILE IN USA
ENVIRONMENTAL BURDEN INDICATORS					
Particulate Matter 2.5 (µg/m ³)	4.6	6.11	4	8.45	0
Ozone (ppb)	64.6	65.3	37	61.8	69
Nitrogen Dioxide (NO ₂) (ppbv)	3.8	8.1	15	7.8	12
Diesel Particulate Matter (µg/m ³)	0.054	0.187	27	0.191	9
Toxic Releases to Air (toxicity-weighted concentration)	0	29	16	4,600	1
Traffic Proximity (daily traffic count/distance to road)	48,000	730,000	28	1,700,000	12
Lead Paint (% Pre-1960 Housing)	0.022	0.19	28	0.3	19
Superfund Proximity (site count/km distance)	0.31	0.34	77	0.39	76
RMP Facility Proximity (facility count/km distance)	0	0.2	0	0.57	0
Hazardous Waste Proximity (facility count/km distance)	0	1.2	0	3.5	0
Underground Storage Tanks (count/km ²)	0.0047	2.8	29	3.6	27
Wastewater Discharge (toxicity-weighted concentration/m distance)	0	990000	0	700000	0
Drinking Water Non-Compliance (points)	0.11	5.6	71	2.2	74
SOCIOECONOMIC INDICATORS					
Demographic Index USA	3.06	N/A	N/A	1.34	95
Supplemental Demographic Index USA	2.66	N/A	N/A	1.64	92
Demographic Index State	3.43	2.16	92	N/A	N/A
Supplemental Demographic Index State	2.37	1.62	85	N/A	N/A
People of Color	95%	62%	90	40%	92
Low Income	66%	39%	86	30%	92
Unemployment Rate	12%	6%	81	6%	86
Limited English Speaking Households	4%	6%	62	5%	73
Less Than High School Education	42%	14%	96	11%	97
Under Age 5	4%	5%	49	5%	42
Over Age 64	12%	20%	30	18%	35

*Diesel particulate matter index is from the EPA's Air Toxics Data Update, which is the Agency's ongoing, comprehensive evaluation of air toxics in the United States. This effort aims to prioritize air toxics, emission sources, and locations of interest for further study. It is important to remember that the air toxics data presented here provide broad estimates of health risks over geographic areas of the country, not definitive risks to specific individuals or locations. More information on the Air Toxics Data Update can be found at: <https://www.epa.gov/haps/air-toxics-data-update>.

Sites reporting to EPA within defined area:

Superfund	1
Hazardous Waste, Treatment, Storage, and Disposal Facilities	0
Water Dischargers	13
Air Pollution	6
Brownfields	2
Toxic Release Inventory	2

Other community features within defined area:

Schools	1
Hospitals	0
Places of Worship	2

Other environmental data:

Air Non-attainment	No
Impaired Waters	No

Selected location contains American Indian Reservation Lands*	Yes
Selected location contains a "Justice40 (CEJST)" disadvantaged community	Yes
Selected location contains an EPA IRA disadvantaged community	Yes

Report for 5 miles Ring Centered at 35.428429,-108.056116
 Report produced September 24, 2024 using EJScreen Version 2.3

EJScreen Environmental and Socioeconomic Indicators Data

HEALTH INDICATORS

INDICATOR	VALUE	STATE AVERAGE	STATE PERCENTILE	US AVERAGE	US PERCENTILE
Low Life Expectancy	23%	19%	79	20%	78
Heart Disease	9.2	5.9	96	5.8	96
Asthma	15.8	11.2	99	10.3	99
Cancer	5.2	6.1	27	6.4	25
Persons with Disabilities	14.3%	17.1%	39	13.7%	59

CLIMATE INDICATORS

INDICATOR	VALUE	STATE AVERAGE	STATE PERCENTILE	US AVERAGE	US PERCENTILE
Flood Risk	8%	9%	60	12%	57
Wildfire Risk	70%	58%	44	14%	87

CRITICAL SERVICE GAPS

INDICATOR	VALUE	STATE AVERAGE	STATE PERCENTILE	US AVERAGE	US PERCENTILE
Broadband Internet	68%	20%	97	13%	99
Lack of Health Insurance	15%	10%	83	9%	85
Housing Burden	No	N/A	N/A	N/A	N/A
Transportation Access Burden	Yes	N/A	N/A	N/A	N/A
Food Desert	Yes	N/A	N/A	N/A	N/A

Report for 5 miles Ring Centered at 35.428429,-108.056116

Report produced September 24, 2024 using EJScreen Version 2.3

Location: User-specified point center at 35.428429, -108.056116
 Ring (buffer): 5-miles radius
 Description: Elkins NM0146

Summary of ACS Estimates		2018 - 2022
Population		929
Population Density (per sq. mile)		12
People of Color Population		881
% People of Color Population		95%
Households		219
Housing Units		268
Housing Units Built Before 1950		2
Per Capita Income		14,212
Land Area (sq. miles) (Source: SF1)		74.97
% Land Area		100%
Water Area (sq. miles) (Source: SF1)		0.17
% Water Area		0%

	2018 - 2022 ACS Estimates	Percent	MOE (±)
Population by Race			
Total	929	100%	605
Population Reporting One Race	920	99%	832
White	98	11%	153
Black	0	0%	17
American Indian	822	88%	603
Asian	0	0%	33
Pacific Islander	0	0%	13
Some Other Race	0	0%	13
Population Reporting Two or More Races	10	1%	49
Total Hispanic Population	62	7%	534
Total Non-Hispanic Population	868		
White Alone	48	5%	90
Black Alone	0	0%	17
American Indian Alone	820	88%	428
Non-Hispanic Asian Alone	0	0%	33
Pacific Islander Alone	0	0%	13
Other Race Alone	0	0%	13
Two or More Races Alone	0	0%	13
Population by Sex			
Male	535	58%	380
Female	394	42%	263
Population by Age			
Age 0-4	37	4%	69
Age 0-17	308	33%	239
Age 18+	621	67%	249
Age 65+	116	12%	93

Data Note: Detail may not sum to totals due to rounding. Hispanic population can be of any race.

N/A means not available. **Source:** U.S. Census Bureau, American Community Survey (ACS) 2018 - 2022

Location: User-specified point center at 35.428429, -108.056116
 Ring (buffer): 5-miles radius
 Description: Elkins NM0146

	2018 - 2022 ACS Estimates	Percent	MOE (±)
Population 25+ by Educational Attainment			
Total	564	100%	235
Less than 9th Grade	82	15%	111
9th - 12th Grade, No Diploma	155	27%	148
High School Graduate	165	29%	132
Some College, No Degree	108	19%	123
Associate Degree	9	2%	32
Bachelor's Degree or more	45	8%	68
Population Age 5+ Years by Ability to Speak English			
Total	893	100%	605
Speak only English	440	49%	450
Non-English at Home ¹⁺²⁺³⁺⁴	453	51%	236
¹ Speak English "very well"	401	45%	237
² Speak English "well"	32	4%	108
³ Speak English "not well"	19	2%	73
⁴ Speak English "not at all"	1	0%	45
³⁺⁴ Speak English "less than well"	20	2%	85
²⁺³⁺⁴ Speak English "less than very well"	52	6%	137
Limited English Speaking Households*			
Total	9	100%	44
Speak Spanish	0	0%	13
Speak Other Indo-European Languages	0	0%	13
Speak Asian-Pacific Island Languages	0	0%	13
Speak Other Languages	9	100%	38
Households by Household Income			
Household Income Base	219	100%	116
< \$15,000	64	29%	88
\$15,000 - \$25,000	29	13%	76
\$25,000 - \$50,000	40	18%	63
\$50,000 - \$75,000	23	10%	52
\$75,000 +	63	29%	108
Occupied Housing Units by Tenure			
Total	219	100%	116
Owner Occupied	215	98%	107
Renter Occupied	4	2%	20
Employed Population Age 16+ Years			
Total	661	100%	375
In Labor Force	314	48%	212
Civilian Unemployed in Labor Force	35	11%	81
Not In Labor Force	347	52%	210

Data Note: Detail may not sum to totals due to rounding. Hispanic population can be of anyrace.

N/A means not available. **Source:** U.S. Census Bureau, American Community Survey (ACS)

*Households in which no one 14 and over speaks English "very well" or speaks English only.

Location: User-specified point center at 35.428429, -108.056116

Ring (buffer): 5-miles radius

Description: Elkins NM0146

	2018 - 2022 ACS Estimates	Percent	MOE (±)
Population by Language Spoken at Home*			
Total (persons age 5 and above)	N/A	N/A	N/A
English	N/A	N/A	N/A
Spanish	N/A	N/A	N/A
French, Haitian, or Cajun	N/A	N/A	N/A
German or other West Germanic	N/A	N/A	N/A
Russian, Polish, or Other Slavic	N/A	N/A	N/A
Other Indo-European	N/A	N/A	N/A
Korean	N/A	N/A	N/A
Chinese (including Mandarin, Cantonese)	N/A	N/A	N/A
Vietnamese	N/A	N/A	N/A
Tagalog (including Filipino)	N/A	N/A	N/A
Other Asian and Pacific Island	N/A	N/A	N/A
Arabic	N/A	N/A	N/A
Other and Unspecified	N/A	N/A	N/A
Total Non-English	N/A	N/A	N/A

Data Note: Detail may not sum to totals due to rounding. Hispanic population can be of any race.
 N/A means not available. **Source:** U.S. Census Bureau, American Community Survey (ACS) 2018 - 2022.
 *Population by Language Spoken at Home is available at the census tract summary level and up.