



# EJScreen Community Report

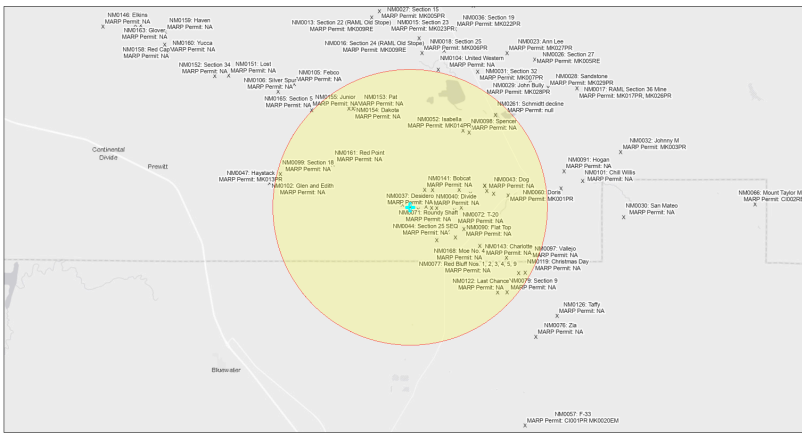
This report provides environmental and socioeconomic information for user-defined areas, and combines that data into environmental justice and supplemental indexes.

## Desidero NM0037

5 miles Ring Centered at 35.333357,-107.857971

Population: 208

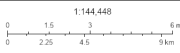
Area in square miles: 78.53



September 17, 2024

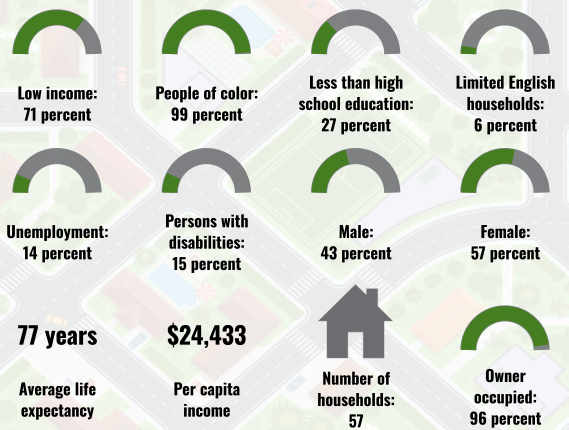
Desidero NM0037

\* Abandoned Uranium Mines

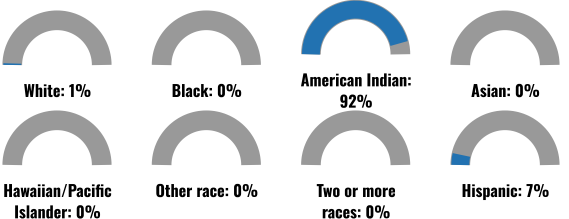


Bureau of Land Management, Esri, HERE, Garmin, IGCN, IGN, IPFS, Mapbox, Microsoft, Swirex, and Natural Resources Department, Esri, HERE, IPFS

### COMMUNITY INFORMATION



### BREAKDOWN BY RACE



### BREAKDOWN BY AGE



### LIMITED ENGLISH SPEAKING BREAKDOWN



### LANGUAGES SPOKEN AT HOME

LANGUAGE	PERCENT
English	71%
Spanish	27%
Vietnamese	1%
Other and Unspecified	1%
Total Non-English	29%

Notes: Numbers may not sum to totals due to rounding. Hispanic population can be of any race. Source: U.S. Census Bureau American Community Survey (ACS) 2018-2022. Life expectancy data comes from the Centers for Disease Control.

Report for 5 miles Ring Centered at 35.333357,-107.857971

Report produced September 17, 2024 using EJScreen Version 2.3

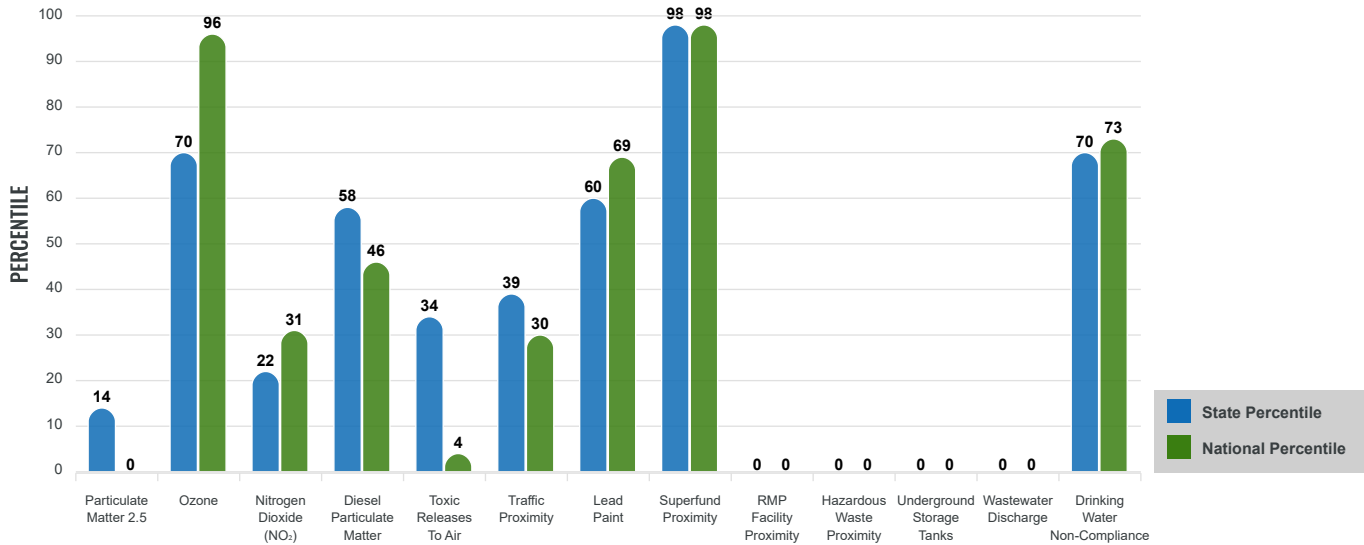
# Environmental Justice & Supplemental Indexes

The environmental justice and supplemental indexes are a combination of environmental and socioeconomic information. There are thirteen EJ indexes and supplemental indexes in EJScreen reflecting the 13 environmental indicators. The indexes for a selected area are compared to those for all other locations in the state or nation. For more information and calculation details on the EJ and supplemental indexes, please visit the [EJScreen website](#).

## EJ INDEXES

The EJ indexes help users screen for potential EJ concerns. To do this, the EJ index combines data on low income and people of color populations with a single environmental indicator.

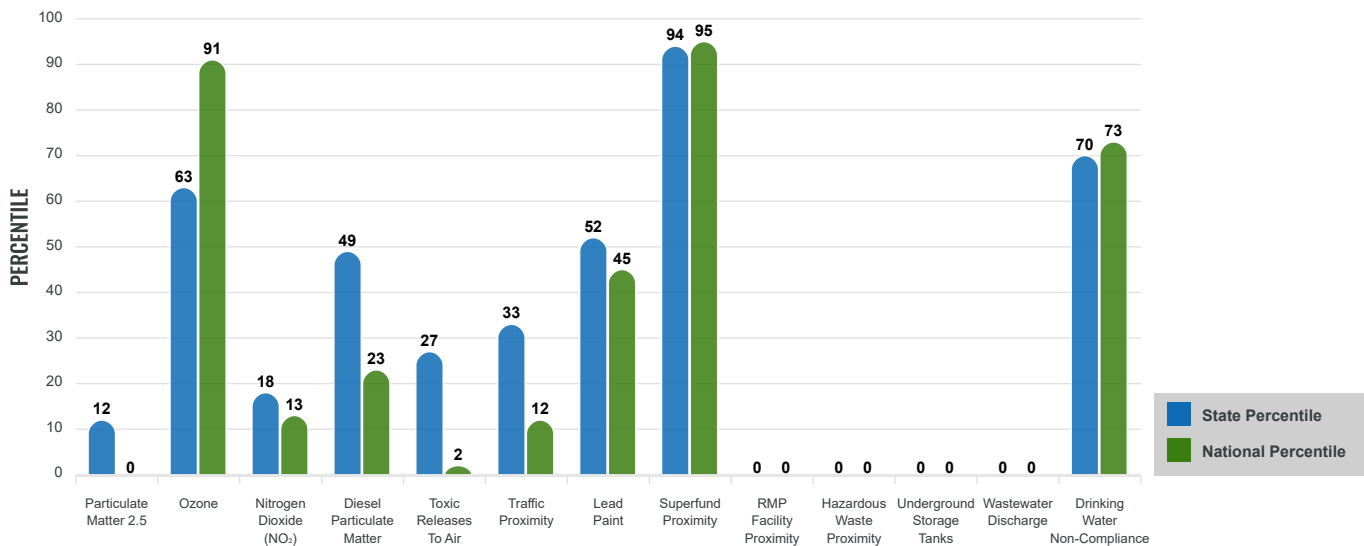
### EJ INDEXES FOR THE SELECTED LOCATION



## SUPPLEMENTAL INDEXES

The supplemental indexes offer a different perspective on community-level vulnerability. They combine data on percent low income, percent persons with disabilities, percent less than high school education, percent limited English speaking, and percent low life expectancy with a single environmental indicator.

### SUPPLEMENTAL INDEXES FOR THE SELECTED LOCATION



Report for 5 miles Ring Centered at 35.333357,-107.857971  
 Report produced September 17, 2024 using EJScreen Version 2.3

# EJScreen Environmental and Socioeconomic Indicators Data

SELECTED VARIABLES	VALUE	STATE AVERAGE	PERCENTILE IN STATE	USA AVERAGE	PERCENTILE IN USA
<b>ENVIRONMENTAL BURDEN INDICATORS</b>					
Particulate Matter 2.5 (µg/m <sup>3</sup> )	4.69	6.11	7	8.45	0
Ozone (ppb)	64.7	65.3	37	61.8	69
Nitrogen Dioxide (NO <sub>2</sub> ) (ppbv)	3.1	8.1	11	7.8	7
Diesel Particulate Matter (µg/m <sup>3</sup> )	0.0633	0.187	31	0.191	13
Toxic Releases to Air (toxicity-weighted concentration)	0.002	29	16	4,600	1
Traffic Proximity (daily traffic count/distance to road)	23,000	730,000	21	1,700,000	7
Lead Paint (% Pre-1960 Housing)	0.048	0.19	36	0.3	26
Superfund Proximity (site count/km distance)	0.7	0.34	90	0.39	88
RMP Facility Proximity (facility count/km distance)	0	0.2	0	0.57	0
Hazardous Waste Proximity (facility count/km distance)	0	1.2	0	3.5	0
Underground Storage Tanks (count/km <sup>2</sup> )	0	2.8	0	3.6	0
Wastewater Discharge (toxicity-weighted concentration/m distance)	0	990000	0	700000	0
Drinking Water Non-Compliance (points)	0.15	5.6	71	2.2	74
<b>SOCIOECONOMIC INDICATORS</b>					
Demographic Index USA	3.22	N/A	N/A	1.34	97
Supplemental Demographic Index USA	2.5	N/A	N/A	1.64	89
Demographic Index State	3.61	2.16	96	N/A	N/A
Supplemental Demographic Index State	2.23	1.62	81	N/A	N/A
People of Color	99%	62%	95	40%	96
Low Income	71%	39%	89	30%	94
Unemployment Rate	14%	6%	87	6%	91
Limited English Speaking Households	6%	6%	68	5%	78
Less Than High School Education	27%	14%	84	11%	89
Under Age 5	6%	5%	69	5%	66
Over Age 64	11%	20%	25	18%	29

\*Diesel particulate matter index is from the EPA's Air Toxics Data Update, which is the Agency's ongoing, comprehensive evaluation of air toxics in the United States. This effort aims to prioritize air toxics, emission sources, and locations of interest for further study. It is important to remember that the air toxics data presented here provide broad estimates of health risks over geographic areas of the country, not definitive risks to specific individuals or locations. More information on the Air Toxics Data Update can be found at: <https://www.epa.gov/haps/air-toxics-data-update>.

**Sites reporting to EPA within defined area:**

Superfund .....	1
Hazardous Waste, Treatment, Storage, and Disposal Facilities .....	0
Water Dischargers .....	3
Air Pollution .....	0
Brownfields .....	0
Toxic Release Inventory .....	0

**Other community features within defined area:**

Schools .....	0
Hospitals .....	0
Places of Worship .....	0

**Other environmental data:**

Air Non-attainment .....	No
Impaired Waters .....	Yes

Selected location contains American Indian Reservation Lands* .....	Yes
Selected location contains a "Justice40 (CEJST)" disadvantaged community .....	Yes
Selected location contains an EPA IRA disadvantaged community .....	Yes

Report for 5 miles Ring Centered at 35.333357,-107.857971  
 Report produced September 17, 2024 using EJScreen Version 2.3

## EJScreen Environmental and Socioeconomic Indicators Data

### HEALTH INDICATORS

INDICATOR	VALUE	STATE AVERAGE	STATE PERCENTILE	US AVERAGE	US PERCENTILE
Low Life Expectancy	22%	19%	78	20%	78
Heart Disease	9.2	5.9	96	5.8	95
Asthma	15.7	11.2	98	10.3	99
Cancer	5.2	6.1	30	6.4	25
Persons with Disabilities	15%	17.1%	43	13.7%	64

### CLIMATE INDICATORS

INDICATOR	VALUE	STATE AVERAGE	STATE PERCENTILE	US AVERAGE	US PERCENTILE
Flood Risk	19%	9%	88	12%	85
Wildfire Risk	0%	58%	28	14%	78

### CRITICAL SERVICE GAPS

INDICATOR	VALUE	STATE AVERAGE	STATE PERCENTILE	US AVERAGE	US PERCENTILE
Broadband Internet	62%	20%	96	13%	99
Lack of Health Insurance	20%	10%	92	9%	92
Housing Burden	No	N/A	N/A	N/A	N/A
Transportation Access Burden	Yes	N/A	N/A	N/A	N/A
Food Desert	Yes	N/A	N/A	N/A	N/A

Report for 5 miles Ring Centered at 35.333357,-107.857971

Report produced September 17, 2024 using EJScreen Version 2.3

Location: User-specified point center at 35.333357, -107.857971  
 Ring (buffer): 5-miles radius  
 Description: Desidero NM0037

Summary of ACS Estimates		2018 - 2022
Population		208
Population Density (per sq. mile)		2
People of Color Population		205
% People of Color Population		99%
Households		57
Housing Units		75
Housing Units Built Before 1950		2
Per Capita Income		24,433
Land Area (sq. miles) (Source: SF1)		85.04
% Land Area		100%
Water Area (sq. miles) (Source: SF1)		0.14
% Water Area		0%

	2018 - 2022 ACS Estimates	Percent	MOE (±)
<b>Population by Race</b>			
Total	208	100%	375
Population Reporting One Race	194	94%	612
White	4	2%	332
Black	0	0%	29
American Indian	191	92%	163
Asian	0	0%	62
Pacific Islander	0	0%	13
Some Other Race	0	0%	13
Population Reporting Two or More Races	13	6%	49
Total Hispanic Population	15	7%	250
Total Non-Hispanic Population	193		
White Alone	2	1%	256
Black Alone	0	0%	29
American Indian Alone	191	92%	163
Non-Hispanic Asian Alone	0	0%	62
Pacific Islander Alone	0	0%	13
Other Race Alone	0	0%	13
Two or More Races Alone	0	0%	13
<b>Population by Sex</b>			
Male	90	43%	288
Female	118	57%	160
<b>Population by Age</b>			
Age 0-4	13	6%	39
Age 0-17	65	31%	69
Age 18+	143	69%	351
Age 65+	23	11%	100

**Data Note:** Detail may not sum to totals due to rounding. Hispanic population can be of any race.

N/A means not available. **Source:** U.S. Census Bureau, American Community Survey (ACS) 2018 - 2022

Location: User-specified point center at 35.333357, -107.857971  
 Ring (buffer): 5-miles radius  
 Description: Desidero NM0037

	2018 - 2022 ACS Estimates	Percent	MOE (±)
<b>Population 25+ by Educational Attainment</b>			
Total	125	100%	371
Less than 9th Grade	14	11%	83
9th - 12th Grade, No Diploma	19	15%	45
High School Graduate	57	46%	143
Some College, No Degree	24	19%	80
Associate Degree	2	2%	88
Bachelor's Degree or more	8	7%	257
<b>Population Age 5+ Years by Ability to Speak English</b>			
Total	194	100%	375
Speak only English	84	43%	272
Non-English at Home <sup>1+2+3+4</sup>	111	57%	266
<sup>1</sup> Speak English "very well"	103	53%	257
<sup>2</sup> Speak English "well"	4	2%	83
<sup>3</sup> Speak English "not well"	3	1%	45
<sup>4</sup> Speak English "not at all"	1	0%	45
<sup>3+4</sup> Speak English "less than well"	4	2%	64
<sup>2+3+4</sup> Speak English "less than very well"	8	4%	105
<b>Limited English Speaking Households*</b>			
Total	3	100%	74
Speak Spanish	0	5%	71
Speak Other Indo-European Languages	0	0%	13
Speak Asian-Pacific Island Languages	0	0%	13
Speak Other Languages	3	95%	18
<b>Households by Household Income</b>			
Household Income Base	57	100%	250
< \$15,000	20	35%	62
\$15,000 - \$25,000	4	7%	18
\$25,000 - \$50,000	18	31%	99
\$50,000 - \$75,000	6	11%	38
\$75,000 +	9	15%	248
<b>Occupied Housing Units by Tenure</b>			
Total	57	100%	250
Owner Occupied	55	96%	256
Renter Occupied	2	4%	63
<b>Employed Population Age 16+ Years</b>			
Total	157	100%	375
In Labor Force	82	52%	373
Civilian Unemployed in Labor Force	12	14%	43
Not In Labor Force	75	48%	96

**Data Note:** Detail may not sum to totals due to rounding. Hispanic population can be of anyrace.

N/A means not available. **Source:** U.S. Census Bureau, American Community Survey (ACS)

\*Households in which no one 14 and over speaks English "very well" or speaks English only.



Location: User-specified point center at 35.333357, -107.857971

Ring (buffer): 5-miles radius

Description: Desidero NM0037

	2018 - 2022 ACS Estimates	Percent	MOE (±)
<b>Population by Language Spoken at Home*</b>			
Total (persons age 5 and above)	755	100%	1,163
English	539	71%	819
Spanish	201	27%	527
French, Haitian, or Cajun	0	0%	13
German or other West Germanic	0	0%	13
Russian, Polish, or Other Slavic	0	0%	13
Other Indo-European	0	0%	13
Korean	0	0%	13
Chinese (including Mandarin, Cantonese)	0	0%	13
Vietnamese	8	1%	62
Tagalog (including Filipino)	0	0%	3
Other Asian and Pacific Island	0	0%	13
Arabic	0	0%	5
Other and Unspecified	6	1%	40
Total Non-English	215	29%	1,422

**Data Note:** Detail may not sum to totals due to rounding. Hispanic population can be of any race.  
 N/A means not available. **Source:** U.S. Census Bureau, American Community Survey (ACS) 2018 - 2022.  
 \*Population by Language Spoken at Home is available at the census tract summary level and up.