

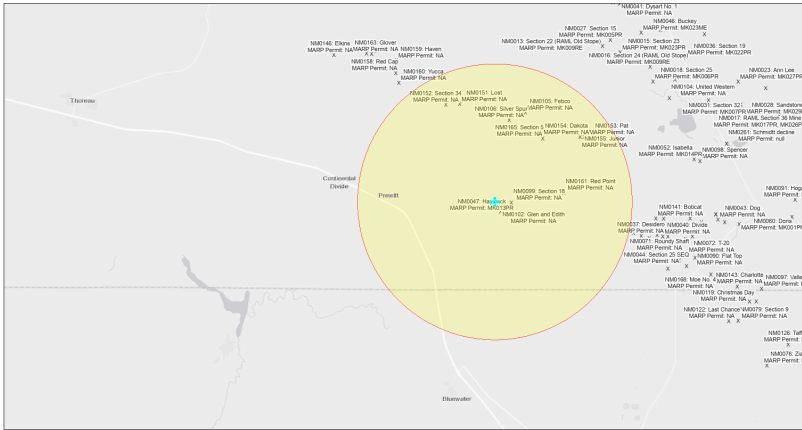


EJScreen Community Report

This report provides environmental and socioeconomic information for user-defined areas, and combines that data into environmental justice and supplemental indexes.

Haystack No. 2 NM0061

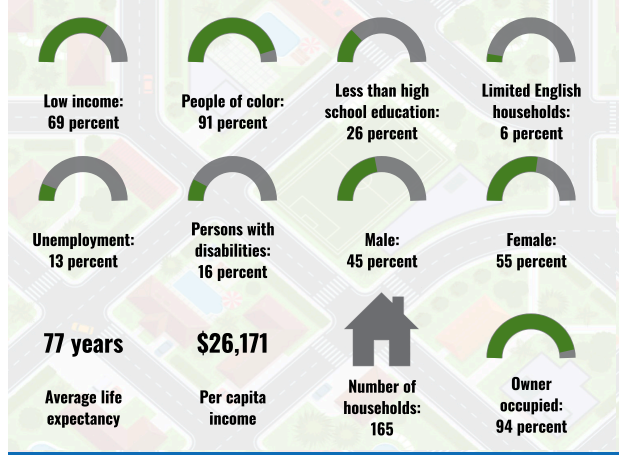
5 miles Ring Centered at 35.351208,-107.952313
Population: 531
Area in square miles: 78.53



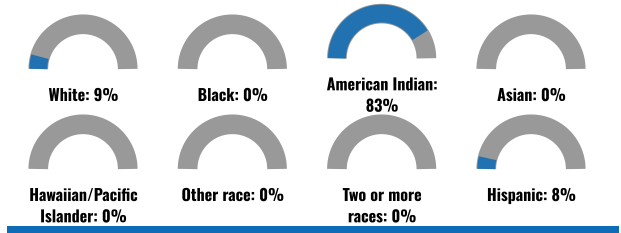
September 18, 2024
Haystack No. 2 NM0061
Abandoned Uranium Mines

Bureau of Land Management, EPA, HERE, Garmin, IGSW, EPA, USF, New Mexico Energy, Minerals and Natural Resources Department, Esri, HERE, UPS

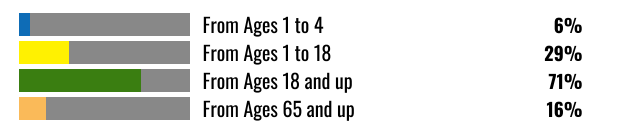
COMMUNITY INFORMATION



BREAKDOWN BY RACE



BREAKDOWN BY AGE



LIMITED ENGLISH SPEAKING BREAKDOWN



Notes: Numbers may not sum to totals due to rounding. Hispanic population can be of any race. Source: U.S. Census Bureau American Community Survey (ACS) 2018-2022. Life expectancy data comes from the Centers for Disease Control.

LANGUAGES SPOKEN AT HOME

LANGUAGE	PERCENT
English	31%
Other and Unspecified	69%
Total Non-English	69%

Report for 5 miles Ring Centered at 35.351208,-107.952313
Report produced September 18, 2024 using EJScreen Version 2.3

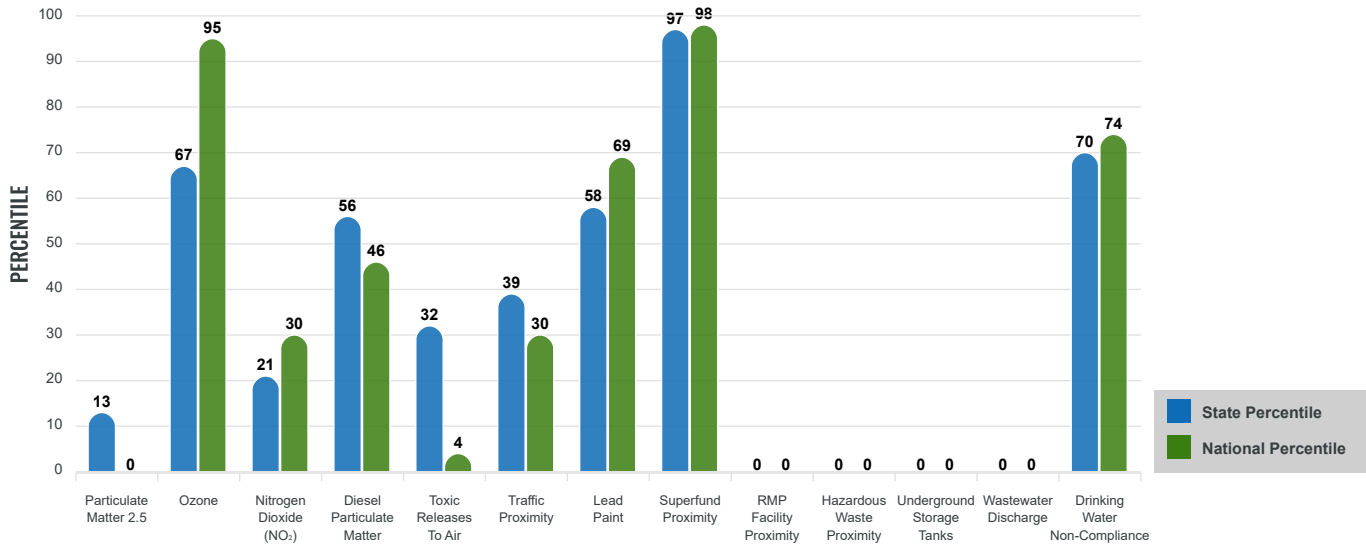
Environmental Justice & Supplemental Indexes

The environmental justice and supplemental indexes are a combination of environmental and socioeconomic information. There are thirteen EJ indexes and supplemental indexes in EJScreen reflecting the 13 environmental indicators. The indexes for a selected area are compared to those for all other locations in the state or nation. For more information and calculation details on the EJ and supplemental indexes, please visit the [EJScreen website](#).

EJ INDEXES

The EJ indexes help users screen for potential EJ concerns. To do this, the EJ index combines data on low income and people of color populations with a single environmental indicator.

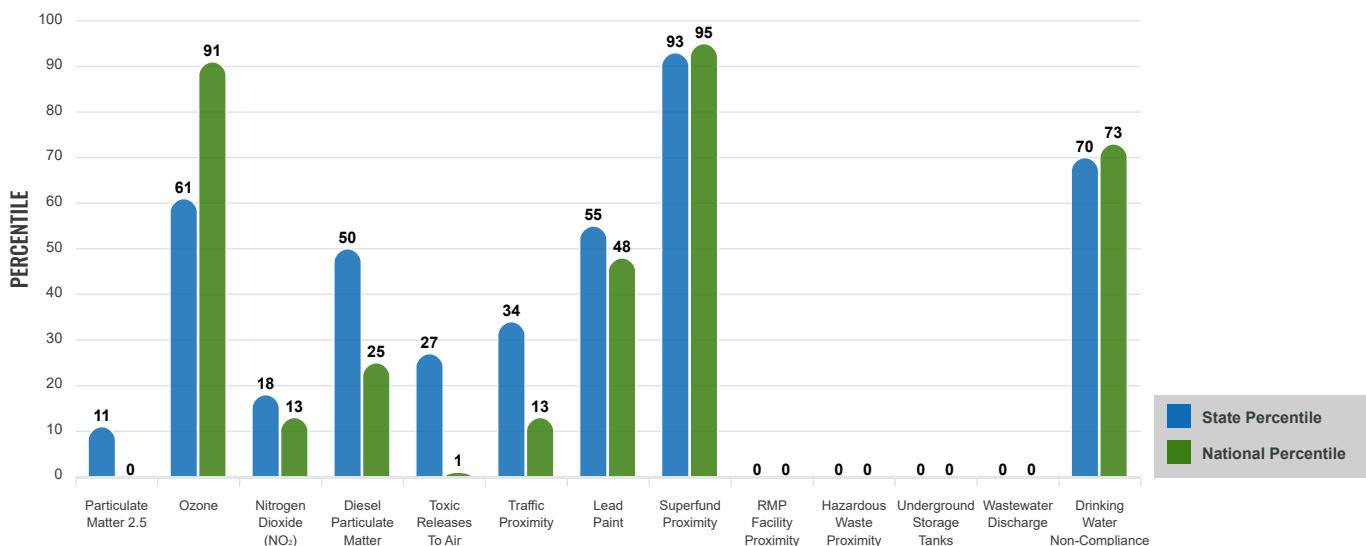
EJ INDEXES FOR THE SELECTED LOCATION



SUPPLEMENTAL INDEXES

The supplemental indexes offer a different perspective on community-level vulnerability. They combine data on percent low income, percent persons with disabilities, percent less than high school education, percent limited English speaking, and percent low life expectancy with a single environmental indicator.

SUPPLEMENTAL INDEXES FOR THE SELECTED LOCATION



Report for 5 miles Ring Centered at 35.351208,-107.952313
 Report produced September 18, 2024 using EJScreen Version 2.3

EJScreen Environmental and Socioeconomic Indicators Data

SELECTED VARIABLES	VALUE	STATE AVERAGE	PERCENTILE IN STATE	USA AVERAGE	PERCENTILE IN USA
ENVIRONMENTAL BURDEN INDICATORS					
Particulate Matter 2.5 (µg/m ³)	4.66	6.11	6	8.45	0
Ozone (ppb)	64.6	65.3	37	61.8	69
Nitrogen Dioxide (NO ₂) (ppbv)	3.1	8.1	11	7.8	7
Diesel Particulate Matter (µg/m ³)	0.0659	0.187	33	0.191	14
Toxic Releases to Air (toxicity-weighted concentration)	0.002	29	16	4,600	1
Traffic Proximity (daily traffic count/distance to road)	27,000	730,000	22	1,700,000	8
Lead Paint (% Pre-1960 Housing)	0.067	0.19	41	0.3	30
Superfund Proximity (site count/km distance)	0.8	0.34	91	0.39	89
RMP Facility Proximity (facility count/km distance)	0	0.2	0	0.57	0
Hazardous Waste Proximity (facility count/km distance)	0	1.2	0	3.5	0
Underground Storage Tanks (count/km ²)	0	2.8	0	3.6	0
Wastewater Discharge (toxicity-weighted concentration/m distance)	0	990000	0	700000	0
Drinking Water Non-Compliance (points)	0.44	5.6	73	2.2	75
SOCIOECONOMIC INDICATORS					
Demographic Index USA	3.06	N/A	N/A	1.34	95
Supplemental Demographic Index USA	2.46	N/A	N/A	1.64	88
Demographic Index State	3.42	2.16	92	N/A	N/A
Supplemental Demographic Index State	2.19	1.62	80	N/A	N/A
People of Color	91%	62%	86	40%	89
Low Income	69%	39%	88	30%	93
Unemployment Rate	12%	6%	82	6%	87
Limited English Speaking Households	5%	6%	66	5%	76
Less Than High School Education	26%	14%	82	11%	88
Under Age 5	6%	5%	64	5%	59
Over Age 64	16%	20%	46	18%	52

*Diesel particulate matter index is from the EPA's Air Toxics Data Update, which is the Agency's ongoing, comprehensive evaluation of air toxics in the United States. This effort aims to prioritize air toxics, emission sources, and locations of interest for further study. It is important to remember that the air toxics data presented here provide broad estimates of health risks over geographic areas of the country, not definitive risks to specific individuals or locations. More information on the Air Toxics Data Update can be found at: <https://www.epa.gov/haps/air-toxics-data-update>.

Sites reporting to EPA within defined area:

Superfund	1
Hazardous Waste, Treatment, Storage, and Disposal Facilities	0
Water Dischargers	7
Air Pollution	1
Brownfields	0
Toxic Release Inventory	1

Other community features within defined area:

Schools	0
Hospitals	0
Places of Worship	0

Other environmental data:

Air Non-attainment	No
Impaired Waters	No

Selected location contains American Indian Reservation Lands*	Yes
Selected location contains a "Justice40 (CEJST)" disadvantaged community	Yes
Selected location contains an EPA IRA disadvantaged community	Yes

Report for 5 miles Ring Centered at 35.351208,-107.952313
 Report produced September 18, 2024 using EJScreen Version 2.3

EJScreen Environmental and Socioeconomic Indicators Data

HEALTH INDICATORS

INDICATOR	VALUE	STATE AVERAGE	STATE PERCENTILE	US AVERAGE	US PERCENTILE
Low Life Expectancy	22%	19%	75	20%	74
Heart Disease	8.8	5.9	95	5.8	94
Asthma	15	11.2	95	10.3	99
Cancer	5.3	6.1	30	6.4	25
Persons with Disabilities	16%	17.1%	49	13.7%	69

CLIMATE INDICATORS

INDICATOR	VALUE	STATE AVERAGE	STATE PERCENTILE	US AVERAGE	US PERCENTILE
Flood Risk	17%	9%	85	12%	82
Wildfire Risk	24%	58%	34	14%	83

CRITICAL SERVICE GAPS

INDICATOR	VALUE	STATE AVERAGE	STATE PERCENTILE	US AVERAGE	US PERCENTILE
Broadband Internet	50%	20%	92	13%	98
Lack of Health Insurance	19%	10%	91	9%	91
Housing Burden	No	N/A	N/A	N/A	N/A
Transportation Access Burden	Yes	N/A	N/A	N/A	N/A
Food Desert	Yes	N/A	N/A	N/A	N/A

Report for 5 miles Ring Centered at 35.351208,-107.952313

Report produced September 18, 2024 using EJScreen Version 2.3

Location: User-specified point center at 35.351208, -107.952313
 Ring (buffer): 5-miles radius
 Description: Haystack No. 2 NM0061

Summary of ACS Estimates		2018 - 2022
Population		531
Population Density (per sq. mile)		8
People of Color Population		486
% People of Color Population		91%
Households		165
Housing Units		235
Housing Units Built Before 1950		8
Per Capita Income		26,171
Land Area (sq. miles) (Source: SF1)		70.60
% Land Area		100%
Water Area (sq. miles) (Source: SF1)		0.19
% Water Area		0%

	2018 - 2022 ACS Estimates	Percent	MOE (±)
Population by Race			
Total	531	100%	427
Population Reporting One Race	501	94%	876
White	60	11%	332
Black	0	0%	29
American Indian	439	83%	427
Asian	2	0%	62
Pacific Islander	0	0%	13
Some Other Race	0	0%	13
Population Reporting Two or More Races	30	6%	49
Total Hispanic Population	44	8%	250
Total Non-Hispanic Population	487		
White Alone	46	9%	256
Black Alone	0	0%	29
American Indian Alone	439	83%	428
Non-Hispanic Asian Alone	2	0%	62
Pacific Islander Alone	0	0%	13
Other Race Alone	0	0%	13
Two or More Races Alone	0	0%	13
Population by Sex			
Male	242	45%	368
Female	290	55%	160
Population by Age			
Age 0-4	30	6%	69
Age 0-17	154	29%	232
Age 18+	377	71%	351
Age 65+	87	16%	211

Data Note: Detail may not sum to totals due to rounding. Hispanic population can be of any race.

N/A means not available. **Source:** U.S. Census Bureau, American Community Survey (ACS) 2018 - 2022

Location: User-specified point center at 35.351208, -107.952313
 Ring (buffer): 5-miles radius
 Description: Haystack No. 2 NM0061

	2018 - 2022 ACS Estimates	Percent	MOE (±)
Population 25+ by Educational Attainment			
Total	331	100%	371
Less than 9th Grade	37	11%	111
9th - 12th Grade, No Diploma	47	14%	148
High School Graduate	138	42%	143
Some College, No Degree	63	19%	123
Associate Degree	6	2%	88
Bachelor's Degree or more	39	12%	257
Population Age 5+ Years by Ability to Speak English			
Total	502	100%	388
Speak only English	242	48%	374
Non-English at Home ¹⁺²⁺³⁺⁴	260	52%	266
¹ Speak English "very well"	241	48%	257
² Speak English "well"	10	2%	83
³ Speak English "not well"	6	1%	45
⁴ Speak English "not at all"	2	0%	45
³⁺⁴ Speak English "less than well"	8	2%	64
²⁺³⁺⁴ Speak English "less than very well"	18	4%	105
Limited English Speaking Households*			
Total	10	100%	74
Speak Spanish	3	27%	71
Speak Other Indo-European Languages	0	0%	13
Speak Asian-Pacific Island Languages	0	0%	13
Speak Other Languages	7	73%	13
Households by Household Income			
Household Income Base	165	100%	250
< \$15,000	48	29%	88
\$15,000 - \$25,000	13	8%	82
\$25,000 - \$50,000	50	31%	99
\$50,000 - \$75,000	24	14%	153
\$75,000 +	30	18%	248
Occupied Housing Units by Tenure			
Total	165	100%	250
Owner Occupied	155	94%	256
Renter Occupied	10	6%	70
Employed Population Age 16+ Years			
Total	414	100%	375
In Labor Force	203	49%	373
Civilian Unemployed in Labor Force	26	13%	55
Not In Labor Force	211	51%	240

Data Note: Detail may not sum to totals due to rounding. Hispanic population can be of anyrace.

N/A means not available. **Source:** U.S. Census Bureau, American Community Survey (ACS)

*Households in which no one 14 and over speaks English "very well" or speaks English only.

Location: User-specified point center at 35.351208, -107.952313

Ring (buffer): 5-miles radius

Description: Haystack No. 2 NM0061

	2018 - 2022 ACS Estimates	Percent	MOE (±)
Population by Language Spoken at Home*			
Total (persons age 5 and above)	669	100%	328
English	204	31%	133
Spanish	0	0%	13
French, Haitian, or Cajun	0	0%	13
German or other West Germanic	0	0%	13
Russian, Polish, or Other Slavic	0	0%	13
Other Indo-European	0	0%	13
Korean	0	0%	13
Chinese (including Mandarin, Cantonese)	0	0%	13
Vietnamese	0	0%	13
Tagalog (including Filipino)	0	0%	13
Other Asian and Pacific Island	0	0%	13
Arabic	0	0%	13
Other and Unspecified	465	69%	266
Total Non-English	465	69%	354

Data Note: Detail may not sum to totals due to rounding. Hispanic population can be of any race.
N/A means not available. **Source:** U.S. Census Bureau, American Community Survey (ACS) 2018 - 2022.
*Population by Language Spoken at Home is available at the census tract summary level and up.