

ABANDONED OR INACTIVE URANIUM
MINES IN NEW MEXICO

A report of investigation carried out
between August 1979 and May 1980 under
contract with the New Mexico Energy and
Minerals Department.

by

Orin J. Anderson

New Mexico Bureau of Mines and
Mineral Resources
Open-File Report 148

INTRODUCTION

During the course of this investigation approximately 200 uranium mine sites were visited. Although these sites are distributed throughout 20 counties the majority are in McKinley, San Juan, and Valencia Counties, along the western and southern margin of the San Juan Basin. Other counties with an appreciable number of sites are Grant, Rio Arriba, Sandoval, Sierra, and Socorro.

Field work commenced in August, 1979 and extended although not continuously, into May, 1980. Information obtained during the on-site visits included location, type and size of mine, condition of mine, host formation, dimensions of remaining structures, proximity to residences or villages, water quality data, and radiation levels, although a gamma ray scintillometer was not obtained for the project until October 20, 1979. An effort was made to contact landowners whenever and wherever possible, however, no systematic attempt was made to determine land and mineral ownership during this phase of the investigation.

Mine operation data has been included where available. This consists of information on ore grades, production history mineralogy, and mine operator. Old publications of the U.S. AEC and the State Mine Inspectors office were helpful in this area.

The mine reports are arranged alphabetically by county with each county having its own index. A NM- or AZ-mine identification number is given with each mine name in the index. It is an AML numbering system devised by Don Baker, Jr. The first part of this

identification number is based on a U.S. Soil Conservation Service numbering system of 15' quadrangles beginning with 1 in the northwest corner of the state to 24 in the northeast corner, then returning to the western border to start a new tier. The second part refers to a 7½' quad within the 15' quad; these are numbered counterclockwise from 1 in the NE quadrant to 4 in the SE. The last part of the number refers to a particular mine within the 7½' quad. An AZ- prefix indicates the 15' quadrangle is an Arizona quad that overlaps the New Mexico state boundary.

Acknowledgments - The writer wishes to thank the following people for their valuable assistance in the field: Lars (Skip) Skotte, Richard Chamberlin, JoAnne Osburn, Mary Ann Anderson, and Cheryl Kyllonen.

A special thanks is extended to Mr. William Chenoweth of the U.S. Department of Energy, both for his time in the field as well as the claim maps and A.E.C. mine production records he provided. Mr. John Blagbrough provided helpful information about the Chuska district. The editorial assistance of Wyatt Brewster and Lars (Skip) Skotte is gratefully acknowledged.

The help and cooperation of the Navajo Tribe Office in Window Rock, Arizona permitted a statewide investigation to be completed; a note of thanks goes to Mr. R. Zaman and Mr. William Armstrong of that office.

SAN JUAN COUNTY

*Preface to East Carrizo District Reports	Page 1
*Preface to Chuska District Reports	Page 138
*Other San Juan Co. Mine Reports	Page 178

Quad: Pastora Peak 15'

1. AZ-20-0-1	Page 2
King #6 (Jimmy King #6)	
2. AZ-20-0-2	Page 7
Barton & Begay (Beclabito lease)	
3. AZ-20-03	Page 12
Rocky Flats #1	
4. AZ-20-0-4	Page 15
Canyon #1	
5. AZ-20-0-5	Page 20 21
John John #1	
6. AZ-20-0-6	Page 23 24
Jimmy King #2	
7. AZ-20-0-7	Page 27 28
Rocky Flats #2	
8. AZ-20-0-8	Page 31 32
Cottonwood Butte Mine (VCA Plot 8)	
9. AZ-20-0-9	Page 37 38
Lone Star (on VCA Plot #9)	

PREFACE TO EAST CARRIZO DISTRICT REPORTS

The East Carrizo District lies along or within several miles of the Arizona border in townships 29 and 30 N., and ranges 20 and 21 west.

The area is covered on the Pastora Peak and Redrock Valley 15' topographic quadrangles, but is largely unsurveyed. A land net was projected in solely to determine if our locations agreed with those given in other publications such as Hilpert, L., (1969), and does not appear on the East Carrizo District claim maps (after AEC, 1953, Claim Maps, East Carrizo District) that accompany each report.

These claim maps were provided for our use on this project by Mr. William Chenoweth of the U.S. Department of Energy, Grand Junction Office, Grand Junction, Colorado. They show access roads, drainage lines, and the claims in the area as of 1953. The only scale they carry is the mile post markers along the New Mexico/Arizona state line.

Orin J. Anderson

*New Mexico Bureau of Mines and Mineral Resources
Socorro, New Mexico
June, 1980*

Date Visited 10/31/79

Mine name(s) Rocky Flats #2 County Sân Juan
Section (Unsurveyed) Probably 26 Twنش. 30 N R. 21 W
Quadrangle sheet Pastora Peak 15'
Mining district East Carrizo
Elevation 5800'
Nearest city and/or dwelling Oak Springs; 3 mi. S

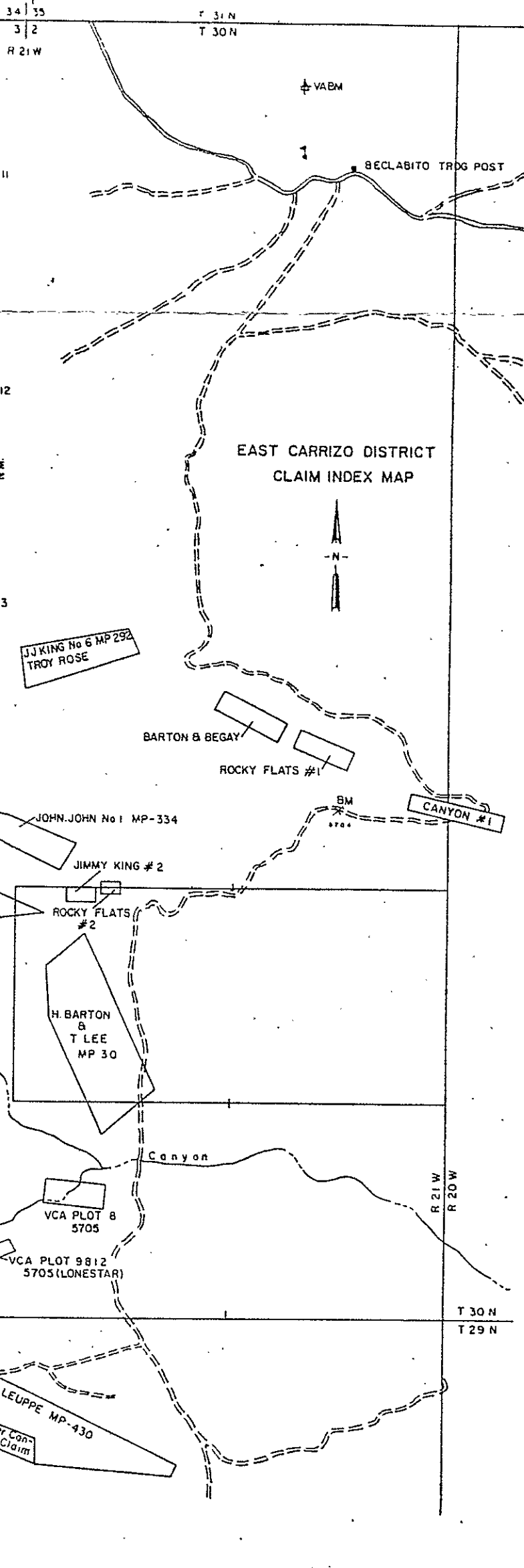
This very small working is on the east edge of the Jimmy King #2 mine-dump. The 12' long stub adit with a 5' x 5' opening shown in photos a & b is untimbered and was not entered during the visit. Mineralization at the portal was scant. Some carnotite/tyuamunite was coloration noted on dump rocks above, but it is believed this dump material is largely from the Jimmy King #2 cut; see photo c with arrow pointing to Ricky Flats adit with dump beyond. Adit heading is nearly due south.

Access is essentially by the same road (now impassable) that leads to the Jimmy King #2 off the Oak Springs road. The mine "produced" from the Salt Wash member of the Morrison formation and was operated only during 1955. Production records were included with those of the Rocky Flats #1.

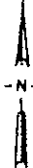
See attached claim index map.

- References: (1) Chenoweth, W.L., 1980, Historical Review of Uranium-Vanadium in The Eastern Carrizo Mountains, San Juan County, New Mexico, U.S. DOE, TM-210.
- (2) Hilpert, L., 1969, Uranium Resources of Northwest New Mexico; USGS pp. 603, p. 52
- (3) East Carrizo District Claim Index Map, 1953.

68 55



EAST CARRIZO DISTRICT
CLAIM INDEX MAP



ARIZ.
N.M.

JJ KING No 6 MP 292
TROY ROSE

BARTON & BEGAY

ROCKY FLATS #1

JOHN JOHN No 1 MP-334

JIMMY KING # 2

ROCKY FLATS #2

H. BARTON
&
T LEE
MP 30

CANYON #1

C BEKIS No 1 MP-41
TROY ROSE

Canyon

VCA PLOT 8
5705

VCA PLOT 9812
5705 (LONESTAR)

R 21 W
R 20 W

T 30 N
T 29 N

W SELLS
MP-431

E LEUPPE MP-430

Upper & Lower Canyon Claims
CATO SELLS MP-56

Upper Can-
yon Claims
PETTIGREW
MP-337
(Leroy
MP-552)

Lower Can-
yon Claim



Photo (a) Rocky Flats #2; looking SW toward small adit with Jimmy King #2 dump in background.

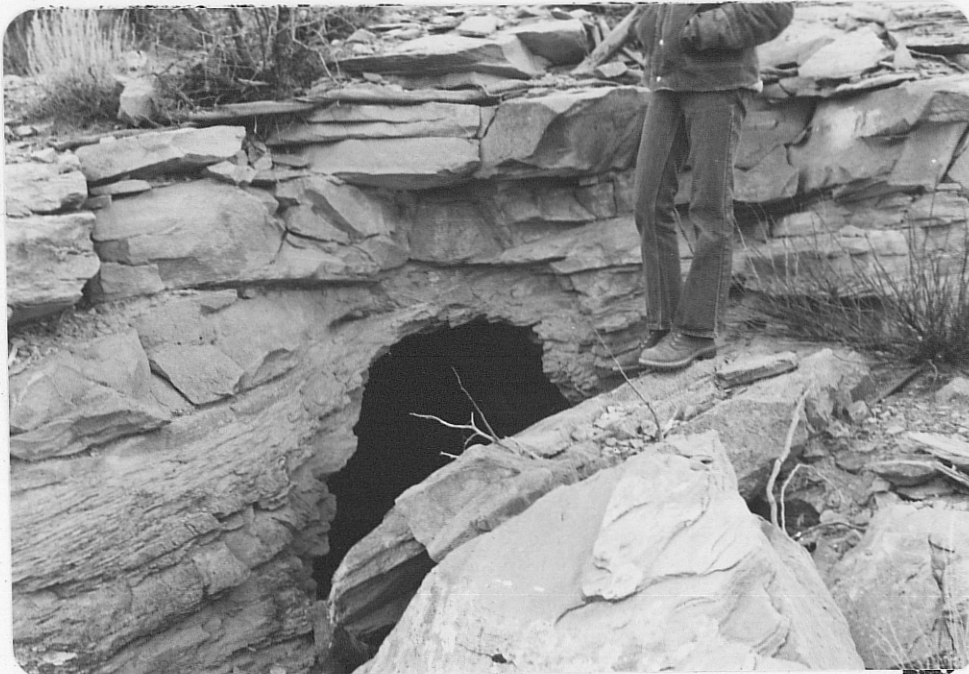


Photo (b) Rocky Flats #2; close-up of adit; looking south.



Photo (c) Looking west from lower level toward Rock Flats adit (arrow) showing relationship to Jimmy King #2 dump (center background).