



EJScreen Community Report

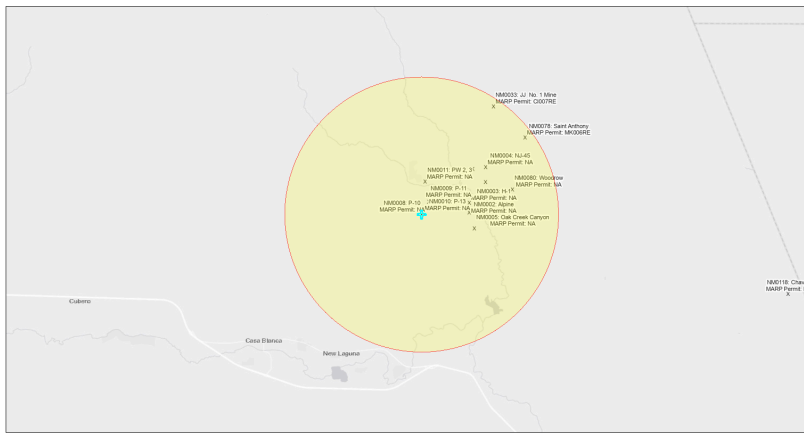
This report provides environmental and socioeconomic information for user-defined areas, and combines that data into environmental justice and supplemental indexes.

P-10 NM0008

5 miles Ring Centered at 35.118474,-107.372855

Population: 834

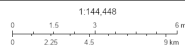
Area in square miles: 78.53



September 12, 2024

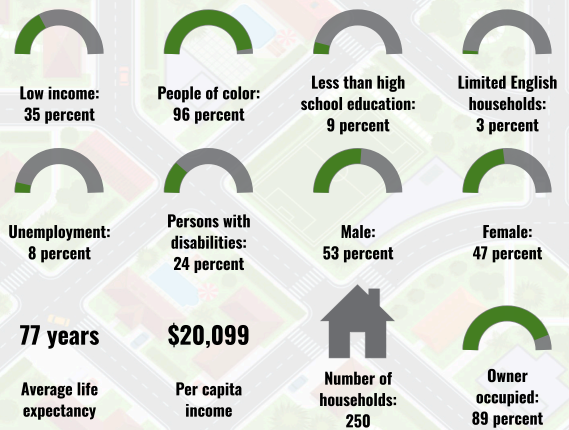
P-10 NM0008

* Abandoned Uranium Mines

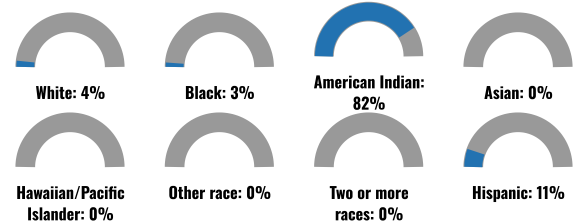


Bureau of Land Management, Esri, HERE, Garmin, IGCN, IGN, IPS, New Mexico Energy, Minerals and Natural Resources Department, Esri, HERE, UPS

COMMUNITY INFORMATION



BREAKDOWN BY RACE



BREAKDOWN BY AGE



LIMITED ENGLISH SPEAKING BREAKDOWN



LANGUAGES SPOKEN AT HOME

LANGUAGE	PERCENT
English	49%
French, Haitian, or Cajun	1%
Other and Unspecified	49%
Total Non-English	51%

Notes: Numbers may not sum to totals due to rounding. Hispanic population can be of any race. Source: U.S. Census Bureau, American Community Survey (ACS) 2018-2022. Life expectancy data comes from the Centers for Disease Control.

Report for 5 miles Ring Centered at 35.118474,-107.372855

Report produced September 12, 2024 using EJScreen Version 2.3

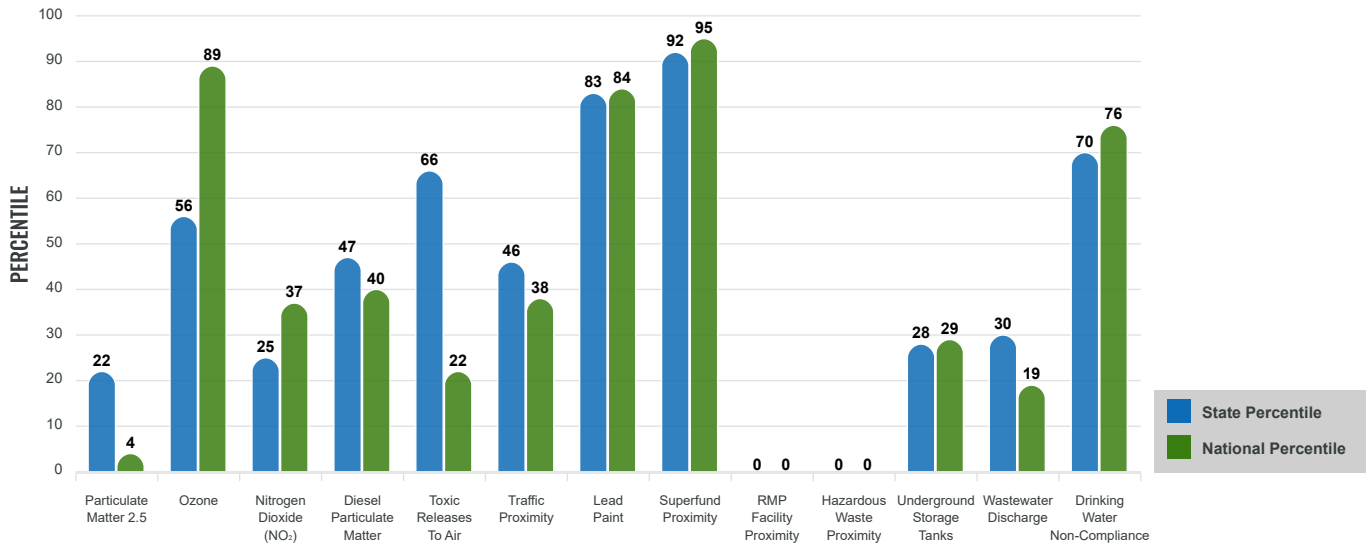
Environmental Justice & Supplemental Indexes

The environmental justice and supplemental indexes are a combination of environmental and socioeconomic information. There are thirteen EJ indexes and supplemental indexes in EJScreen reflecting the 13 environmental indicators. The indexes for a selected area are compared to those for all other locations in the state or nation. For more information and calculation details on the EJ and supplemental indexes, please visit the [EJScreen website](#).

EJ INDEXES

The EJ indexes help users screen for potential EJ concerns. To do this, the EJ index combines data on low income and people of color populations with a single environmental indicator.

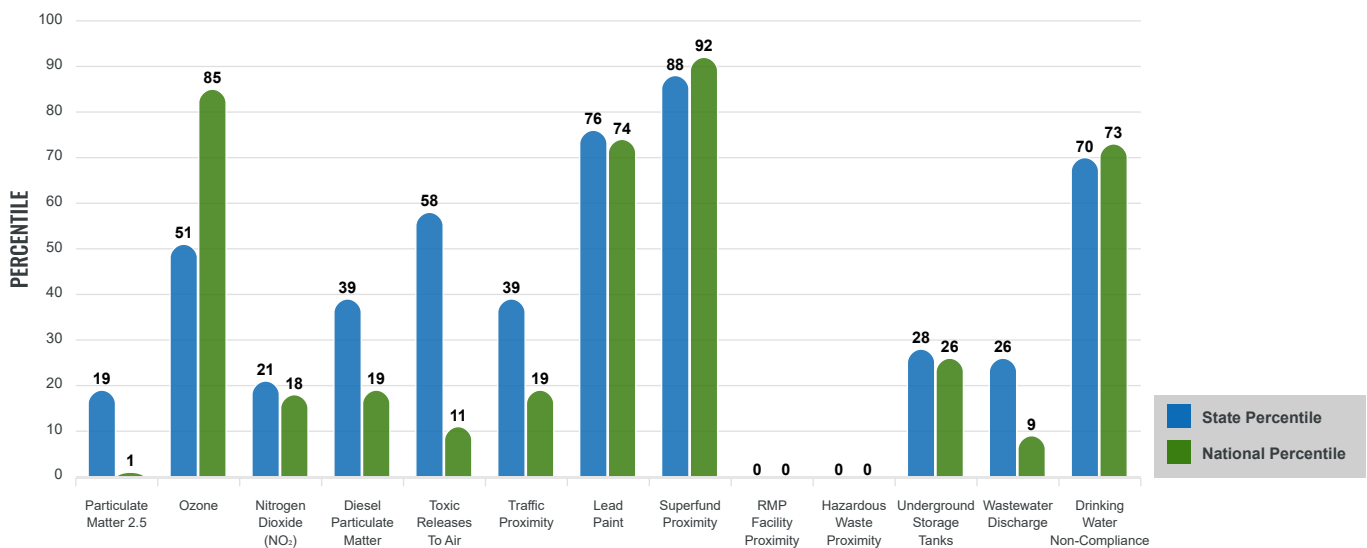
EJ INDEXES FOR THE SELECTED LOCATION



SUPPLEMENTAL INDEXES

The supplemental indexes offer a different perspective on community-level vulnerability. They combine data on percent low income, percent persons with disabilities, percent less than high school education, percent limited English speaking, and percent low life expectancy with a single environmental indicator.

SUPPLEMENTAL INDEXES FOR THE SELECTED LOCATION



Report for 5 miles Ring Centered at 35.118474,-107.372855

Report produced September 12, 2024 using EJScreen Version 2.3

EJScreen Environmental and Socioeconomic Indicators Data

SELECTED VARIABLES	VALUE	STATE AVERAGE	PERCENTILE IN STATE	USA AVERAGE	PERCENTILE IN USA
ENVIRONMENTAL BURDEN INDICATORS					
Particulate Matter 2.5 (µg/m ³)	4.93	6.11	14	8.45	1
Ozone (ppb)	64.9	65.3	38	61.8	70
Nitrogen Dioxide (NO ₂) (ppbv)	3.7	8.1	15	7.8	11
Diesel Particulate Matter (µg/m ³)	0.0627	0.187	31	0.191	13
Toxic Releases to Air (toxicity-weighted concentration)	8.1	29	50	4,600	8
Traffic Proximity (daily traffic count/distance to road)	64,000	730,000	31	1,700,000	14
Lead Paint (% Pre-1960 Housing)	0.31	0.19	74	0.3	59
Superfund Proximity (site count/km distance)	2.6	0.34	97	0.39	97
RMP Facility Proximity (facility count/km distance)	0	0.2	0	0.57	0
Hazardous Waste Proximity (facility count/km distance)	0	1.2	0	3.5	0
Underground Storage Tanks (count/km ²)	0.00014	2.8	27	3.6	26
Wastewater Discharge (toxicity-weighted concentration/m distance)	0.00015	990000	24	700000	8
Drinking Water Non-Compliance (points)	6.5	5.6	86	2.2	91
SOCIOECONOMIC INDICATORS					
Demographic Index USA	2.35	N/A	N/A	1.34	85
Supplemental Demographic Index USA	2.03	N/A	N/A	1.64	75
Demographic Index State	2.76	2.16	72	N/A	N/A
Supplemental Demographic Index State	1.75	1.62	61	N/A	N/A
People of Color	96%	62%	91	40%	93
Low Income	35%	39%	44	30%	64
Unemployment Rate	8%	6%	69	6%	76
Limited English Speaking Households	2%	6%	51	5%	65
Less Than High School Education	9%	14%	46	11%	55
Under Age 5	2%	5%	29	5%	23
Over Age 64	17%	20%	48	18%	54

*Diesel particulate matter index is from the EPA's Air Toxics Data Update, which is the Agency's ongoing, comprehensive evaluation of air toxics in the United States. This effort aims to prioritize air toxics, emission sources, and locations of interest for further study. It is important to remember that the air toxics data presented here provide broad estimates of health risks over geographic areas of the country, not definitive risks to specific individuals or locations. More information on the Air Toxics Data Update can be found at: <https://www.epa.gov/haps/air-toxics-data-update>.

Sites reporting to EPA within defined area:

Superfund	1
Hazardous Waste, Treatment, Storage, and Disposal Facilities	0
Water Dischargers	5
Air Pollution	0
Brownfields	0
Toxic Release Inventory	0

Other community features within defined area:

Schools	2
Hospitals	0
Places of Worship	0

Other environmental data:

Air Non-attainment	No
Impaired Waters	Yes

Selected location contains American Indian Reservation Lands*	Yes
Selected location contains a "Justice40 (CEJST)" disadvantaged community	Yes
Selected location contains an EPA IRA disadvantaged community	Yes

Report for 5 miles Ring Centered at 35.118474,-107.372855
 Report produced September 12, 2024 using EJScreen Version 2.3

EJScreen Environmental and Socioeconomic Indicators Data

HEALTH INDICATORS

INDICATOR	VALUE	STATE AVERAGE	STATE PERCENTILE	US AVERAGE	US PERCENTILE
Low Life Expectancy	22%	19%	74	20%	73
Heart Disease	8.1	5.9	92	5.8	89
Asthma	13.3	11.2	92	10.3	96
Cancer	6.4	6.1	59	6.4	47
Persons with Disabilities	23.9%	17.1%	86	13.7%	93

CLIMATE INDICATORS

INDICATOR	VALUE	STATE AVERAGE	STATE PERCENTILE	US AVERAGE	US PERCENTILE
Flood Risk	11%	9%	71	12%	68
Wildfire Risk	58%	58%	40	14%	86

CRITICAL SERVICE GAPS

INDICATOR	VALUE	STATE AVERAGE	STATE PERCENTILE	US AVERAGE	US PERCENTILE
Broadband Internet	64%	20%	96	13%	99
Lack of Health Insurance	15%	10%	81	9%	83
Housing Burden	No	N/A	N/A	N/A	N/A
Transportation Access Burden	Yes	N/A	N/A	N/A	N/A
Food Desert	No	N/A	N/A	N/A	N/A

Report for 5 miles Ring Centered at 35.118474,-107.372855

Report produced September 12, 2024 using EJScreen Version 2.3

Location: User-specified point center at 35.118474, -107.372855
 Ring (buffer): 5-miles radius
 Description: P-10 NM0008

Summary of ACS Estimates		2018 - 2022
Population		834
Population Density (per sq. mile)		10
People of Color Population		800
% People of Color Population		96%
Households		250
Housing Units		308
Housing Units Built Before 1950		85
Per Capita Income		20,099
Land Area (sq. miles) (Source: SF1)		81.88
% Land Area		100%
Water Area (sq. miles) (Source: SF1)		0.18
% Water Area		0%

	2018 - 2022 ACS Estimates	Percent	MOE (±)
Population by Race			
Total	834	100%	639
Population Reporting One Race	814	98%	1,284
White	75	9%	377
Black	23	3%	196
American Indian	709	85%	636
Asian	0	0%	13
Pacific Islander	0	0%	13
Some Other Race	7	1%	49
Population Reporting Two or More Races	20	2%	162
Total Hispanic Population	93	11%	449
Total Non-Hispanic Population	741		
White Alone	34	4%	141
Black Alone	23	3%	196
American Indian Alone	682	82%	627
Non-Hispanic Asian Alone	0	0%	13
Pacific Islander Alone	0	0%	13
Other Race Alone	0	0%	13
Two or More Races Alone	2	0%	77
Population by Sex			
Male	439	53%	410
Female	395	47%	342
Population by Age			
Age 0-4	16	2%	72
Age 0-17	166	20%	186
Age 18+	668	80%	419
Age 65+	141	17%	203

Data Note: Detail may not sum to totals due to rounding. Hispanic population can be of any race.

N/A means not available. **Source:** U.S. Census Bureau, American Community Survey (ACS) 2018 - 2022

Location: User-specified point center at 35.118474, -107.372855
 Ring (buffer): 5-miles radius
 Description: P-10 NM0008

	2018 - 2022 ACS Estimates	Percent	MOE (±)
Population 25+ by Educational Attainment			
Total	579	100%	401
Less than 9th Grade	22	4%	63
9th - 12th Grade, No Diploma	31	5%	107
High School Graduate	288	50%	270
Some College, No Degree	150	26%	186
Associate Degree	77	13%	105
Bachelor's Degree or more	12	2%	89
Population Age 5+ Years by Ability to Speak English			
Total	818	100%	627
Speak only English	344	42%	409
Non-English at Home ¹⁺²⁺³⁺⁴	474	58%	392
¹ Speak English "very well"	442	54%	381
² Speak English "well"	24	3%	81
³ Speak English "not well"	8	1%	51
⁴ Speak English "not at all"	0	0%	45
³⁺⁴ Speak English "less than well"	8	1%	68
²⁺³⁺⁴ Speak English "less than very well"	32	4%	106
Limited English Speaking Households*			
Total	7	100%	64
Speak Spanish	0	0%	13
Speak Other Indo-European Languages	0	0%	13
Speak Asian-Pacific Island Languages	0	0%	13
Speak Other Languages	7	100%	60
Households by Household Income			
Household Income Base	250	100%	240
< \$15,000	55	22%	98
\$15,000 - \$25,000	6	3%	70
\$25,000 - \$50,000	73	29%	140
\$50,000 - \$75,000	37	15%	213
\$75,000 +	78	31%	124
Occupied Housing Units by Tenure			
Total	250	100%	240
Owner Occupied	222	89%	163
Renter Occupied	28	11%	204
Employed Population Age 16+ Years			
Total	680	100%	488
In Labor Force	318	47%	398
Civilian Unemployed in Labor Force	25	8%	104
Not In Labor Force	362	53%	295

Data Note: Detail may not sum to totals due to rounding. Hispanic population can be of anyrace.

N/A means not available. **Source:** U.S. Census Bureau, American Community Survey (ACS)

*Households in which no one 14 and over speaks English "very well" or speaks English only.

Location: User-specified point center at 35.118474, -107.372855

Ring (buffer): 5-miles radius

Description: P-10 NM0008

	2018 - 2022 ACS Estimates	Percent	MOE (±)
Population by Language Spoken at Home*			
Total (persons age 5 and above)	1,945	100%	678
English	962	49%	639
Spanish	8	0%	31
French, Haitian, or Cajun	18	1%	65
German or other West Germanic	0	0%	13
Russian, Polish, or Other Slavic	0	0%	13
Other Indo-European	0	0%	13
Korean	0	0%	13
Chinese (including Mandarin, Cantonese)	0	0%	13
Vietnamese	0	0%	13
Tagalog (including Filipino)	0	0%	13
Other Asian and Pacific Island	0	0%	13
Arabic	0	0%	13
Other and Unspecified	957	49%	662
Total Non-English	983	51%	932

Data Note: Detail may not sum to totals due to rounding. Hispanic population can be of any race.
N/A means not available. **Source:** U.S. Census Bureau, American Community Survey (ACS) 2018 - 2022.
*Population by Language Spoken at Home is available at the census tract summary level and up.