



SUSANA MARTINEZ  
Governor  
JOHN A. SANCHEZ  
Lieutenant Governor

NEW MEXICO  
ENVIRONMENT DEPARTMENT

*Ground Water Quality Bureau*

Harold Runnels Building  
1190 St. Francis Drive,  
P. O. Box 5469 Santa Fe, NM 87502-5469  
Phone (505) 827-2918 Fax (505) 827-2965  
www.nmenv.state.nm.us



DAVE MARTIN  
Cabinet Secretary  
Butch Tongate  
Acting Deputy Secretary

**Memorandum**

**To:** LaDonna Turner, Site Assessment Manager  
Response and Prevention Branch  
U.S. Environmental Protection Agency, Region 6

**From:** Dana Bahar, Manager, Superfund Oversight Section, Ground Water Quality  
Bureau, New Mexico Environment Department

**Date:** October 31, 2011

**Subject:** Pre-CERCLIS Screening Assessment of the Section 30 Mine, New Mexico: No  
Further Action Under CERLCA Recommended

<b>Site name</b>	Section 30	<b>Alias</b>	NA	<b>Street Address</b>	NA
<b>City</b>	NA	<b>State</b>	New Mexico	<b>Zip code</b>	NA
<b>County</b>	McKinley County				
<b>Latitude</b>	35° 25' 53.82" N	<b>Longitude</b>	107° 49' 28.26" W		

**Site physical description:**

The Section 30 mine is located in Section 30, T14N, R9W, approximately 5.2 miles on State highway 509 north of the junction of State highways 509 and 605 in the Ambrosia Lake area. The Section 30 mine was an underground uranium mine in the Ambrosia Lake Mining Sub-District. The surface facilities and main shaft are located in Section 30 and the underground workings underlie parts of Sections 30, 29 and 28. The Section 30 mine had approximately 44 acres of disturbed surface. The Quivira Mining Company (QMC) started reclamation of the disturbed surface at the Section 30 mine site in 1994 under the Prior Reclamation Criteria of the New Mexico Mining Act Rules [19.10.5.511 NMAC] (Ref. 1). Additional surface reclamation work occurred at the Section 30 mine from 2003 through 2005 under an Existing Mine Permit through the New Mexico Mining Act Rules [19.10.5.500 NMAC] (Ref. 2).

**Site identification:**

The Section 30 mine is one of 97 legacy uranium sites identified within the Ambrosia Mining Sub-District of the Grants Mining District. It is one of 11 mines that are being addressed by Rio Algom Mining, LLC (RAML) under a discharge permit (DP-362) in accordance with the New Mexico Water Quality Control Commission (NMWQCC) Regulations [20.6.2.3000 NMAC].

**Site summary:**

The Section 30 mine commenced in 1957 with mine development. With subsequent completion of the mine shaft, the first ore production from the mine occurred in 1958. To date, the Section 30 mine has produced approximately 3.6 million tons of uranium ore. In 1984 the Section 30 mine shut down conventional mining activities due to the depressed condition of the uranium market. However, beginning in 1984, areas of the mine were available for old stope leaching methods (Ref. 1). Old stope leaching was discontinued in January 2000 and the Section 30 mine permanently suspended operations in December, 2002 (Ref. 2).

QMC began reclamation of the disturbed surface areas at the Section 30 mine site in 1994 under the Prior Reclamation Criteria of the New Mexico Mining Act Rules [19.10.5.511 NMAC]. From 1995 through 1998 several inspections by the New Mexico Energy Minerals and Natural Resources Department (NMEMNRD) found the reclamation measures did not satisfy the requirements of the New Mexico Mining Act (NMMA). Currently the Section 30 mine maintains an Existing Mine Permit (MK009RE) under the New Mexico Mining Act Rules [19.10.5 NMAC], with the NMEMNRD. MK009RE required QMC to develop an approved Closeout Plan (Ref. 3). In 2003 through 2005 RAML performed additional reclamation work under the Closeout Plan which included further demolition and disposal of surface facilities, contour work and revegetation of the surface along with the plugging of the main shaft, ventilation holes and injection holes (Ref. 2). To date the NMEMNRD has not released the Section 30 mine from its closure requirements under the Existing Mine Permit.

In 1983 the New Mexico Environment Department (NMED) determined that the old stope leaching process would require a discharge permit (DP) under the NMWQCC Regulations [20.6.2.3000 NMAC]. In 1985, DP-362 authorized QMC to conduct old stope leaching by recirculating mine water with some mine water fortified with sodium bicarbonate or sulfuric acid to be injected into 8 underground uranium mines in the Ambrosia Lake Mining Sub-District for the secondary recovery of uranium. These 8 mines included the Section 17, 19, 22, 24, 30, 30W, 33 and 35 mines. In 1999 a modification to DP-362 included four additional underground uranium mines; the Section 13, 15, 23 and 25 mines. NMED records are not conclusive that all mines listed in DP-362 were actually used for old stope leaching. QMC ceased all underground injections by 2000. To ensure an adequate Closure Plan is implemented in accordance with NMWQCC Regulations [20.6.2.3107 NMAC], and pursuant to Condition 6 of DP-362, RAML submitted a ground water flow and geochemical model to NMED for approval. NMED approved the ground water flow model but not the geochemical model. In 2008, NMED required RAML to submit an Abatement Plan to assess regional ground water conditions related to the RAML mines addressed in DP-362 with the exception of the Section 13 and 15 mines which RAML never owned or operated. In 2009, NMED allowed RAML to conduct abatement under NMWQCC Abatement Regulations [20.6.2.4000] rather than as a condition of DP-362 (Ref. 2).

**Targets:**

Wells that are registered with the New Mexico Office of the State Engineer (OSE) and located within a 4-mile radius are shown in Table 1. There is a ranch with several residences approximately 1.8 miles to the northeast of the Section 30 mine. During NMEDs ground water investigation of San Mateo Creek a domestic well was sampled at this residence. This well does not appear on the OSE database (Ref. 4). The analytical results from the sampled well show ground water concentrations below the Environmental Protection Agency (EPA) Maximum Contaminant Levels (MCL) and the NMWQCC ground water standards (Ref 5).

Airborne Spectral Photometric Environmental Collection Technology (ASPECT) operated by EPA has developed exposure rate contour map of the Ambrosia Lake Mining Sub-District that includes the Section 30 (NM0012) mine (Figure 2). The EPA ASPECT exposure rate measurements were performed in part to evaluate if surface reclamation has been effective in the long-term elimination of such threats to human health and the environment. The map estimates radiation exposure rates on the ground and can be used to identify hazardous levels of radiation. Typical exposure rates in New Mexico range from 5 – 20 micro Roentgens per hour ( $\mu\text{R/hr.}$ ). The ground surface exposure rates in and around the Section 30 mine are over one thousand times higher than the typical range, that is, ground surface radiological hazards were identified at most Ambrosia Lake uranium mine sites including the Section 30 mine (Ref. 6).

**Site ownership and Potential Responsible Parties:**

Kerr McGee Corporation owned and operated the Section 30 mine from 1959 until 1984. QMC, a subsidiary of Kerr McGee Corporation, took over mining operations in 1984. Rio Algom Mining Company (RAMC) acquired QMC in 1989 (Ref. 7). Billiton plc purchased RAMC in 2000. Broken Hill Proprietary Company Limited (BHP) merged with Billiton plc to form BHP Billiton Limited, which changed RAMC to RAML a wholly-owned subsidiary (Ref. 8).

**File review:**

Files that were reviewed for this assessment are listed below.

**Site reconnaissance:**

The last documented site reconnaissance occurred in 2004 by NMEMNRD personnel (Ref. 9). NMED has not conducted a site reconnaissance for this Pre-CERCLIS Screen.

**Recommendation:**

Data collected from the Ambrosia Lake Mining Sub-District has shown a release of CERCLA hazardous substances to both the ground surface, and ground water. In addition, an Aerial Radiological Survey conducted by EPA of the Ambrosia Lake Mining Sub-District measured radiological exposure rates above background in and around the eleven RAML mine sites.

On-going remedial activities at the Section 30 mine are being conducted by RAML under state oversight in accordance with NMWQCC regulations under DP-362 and a separate Abatement Plan. RAML is required to investigate and abate radiological and metal contamination for the regional impacts to the ground water system from legacy RAML uranium sites in the Ambrosia Lake area. In order to ensure that all reclamation work completed by RAML will meet applicable environmental standards which includes surface water, ground water and soils, NMED is also requiring RAML to submit all documentation and data related to completed surface reclamation for review for possible inclusion under NMWQCC abatement regulations because although RAML completed surface reclamation under a NMEMNRD Closeout Plan it did so without concurrence from NMED.

NMED recommends that no further action is required at the Section 30 mine at this time. SOS may revisit this recommendation should additional information become available that indicates that an imminent threat to human health or the environment exists such that further action under CERCLA is warranted. NMED SOS also proposes to periodically review new data as it becomes available and incorporate it into the ground water conceptual model for the Grants Mining

District. A generalized investigation of potential ground water impacts from former uranium mines within the Grants Mineral District is recommended as part of regional ground water quality characterization.

**References:**

1. New Mexico Energy, Minerals and Natural Resources Department, 2007, Abandoned and inactive uranium mines in New Mexico database, Mining and Minerals Division.
2. New Mexico Environment Department, DP-362 files.
3. Rio Algom Mining, LLC, 1999, Application for Existing Mine Permit to Mining and Minerals Division
4. New Mexico Office of the State Engineer, 2011, New Mexico water rights reporting system database, point of diversion by location, four mile radius of Section 19 Mine.
5. New Mexico Environment Department, 2010, Phase 1 Site Investigation Report San Mateo Creek Legacy Uranium Sites, CERCLIS ID# NMN00060684, McKinley and Cibola Counties, New Mexico.
6. EPA, 2011, Airborne Spectral Photometric Environmental Collection Technology Exposure Rate Contour Map of Ambrosia Lake Mining District.
7. Quivira Mining Company, 1994, Letter to the Mining and Minerals Division.
8. Rio Algom Mining, LLC, 2001, Letter to the Mining and Minerals Division.
9. Mining and Minerals Division, 2004, Annual Inspection Report of Rio Algom Mining, LLC in the Ambrosia Lake Mining District.

Table 1. Wells within a Four Mile Radius for Section 30 Mine, Office of the State Engineer <sup>2</sup> .								
OSE File Number	Well Use	Well Owner	Section	Township	Range	Depth of Well (ft)	Depth of Water (ft)	Water Column (ft)
Wells (>1 and <2 miles)								
B 00366	Mining <sup>1</sup>	RIO ALGOM MINING LLC	24	14N	10W	760	*	*
B 00994	Mining <sup>1</sup>	RIO ALGOM MINING LLC	19	14N	09W	779	*	*
B 00372	Mining <sup>1</sup>	SABRE-PINON CORPORATION	23	14N	10W	796	*	*
B 00994	Mining <sup>1</sup>	RIO ALGOM MINING LLC	17	14N	09W	1094	*	*
B 00371	Mining <sup>1</sup>	SABRE-PINON CORPORATION	25	14N	10W	752	*	*
B 00364	Mining <sup>1</sup>	ANDERSON DEVELOPMENT CORP.	30	14N	09W	735	*	*
B 00994	Mining <sup>1</sup>	RIO ALGOM MINING LLC	30	14N	09W	810	*	*
B 00539	Highway <sup>1</sup>	NM State Highway Dept	31	14N	09W	*	*	*
B 00680	Construction	Star Lake Railroad	31	14N	09W	*	*	*
B 01145	Highway <sup>1</sup>	NM State Highway Dept	31	14N	09W	*	*	*
B 00363	Mining <sup>1</sup>	RIO ALGOM MINING LLC	22	14N	10W	745	*	*
Wells (>2 and <3 miles)								
B 00373	Mining <sup>1</sup>	RIO ALGOM MINING LLC	22	14N	10W	1003	*	*
B 00994	Mining <sup>1</sup>	RIO ALGOM MINING LLC	22	14N	10W	827	*	*
B 00365	Mining <sup>1</sup>	ANDERSON DEVELOPMENT CORP.	20	14N	09W	793	*	*
B 00994	Mining <sup>1</sup>	RIO ALGOM MINING LLC	30	14N	09W	750	*	*
B 00362	Mining <sup>1</sup>	RIO ALGOM MINING LLC	22	14N	10W	3093	*	*
B 00375	Industrial <sup>1</sup>	PHILLIPS PETROLEUM CO	28	14N	09W	*	*	*
B 00376	Industrial <sup>1</sup>	UNITED NUCLEAR CORP	28	14N	09W	*	*	*
B 01788	Monitoring <sup>1</sup>	US DOE	29	14N	09W	*	*	*
<p>* = Value Unknown  <sup>1</sup> = Well may be used as a domestic well  <sup>2</sup> = Taken from Section 19 Well Data</p>								

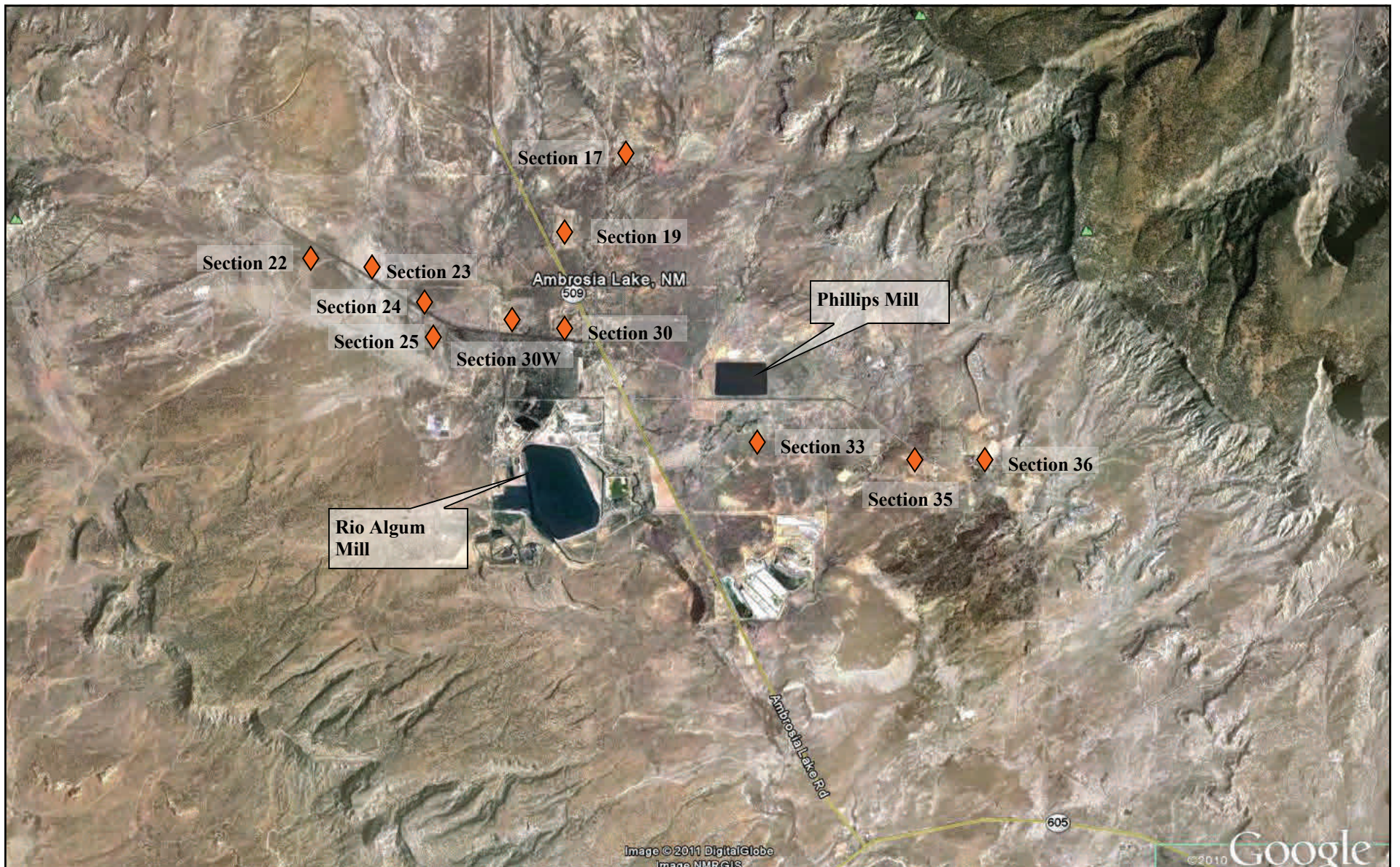


Figure 1. Ambrosia Lake Mining District, Rio Algom Mine Sites

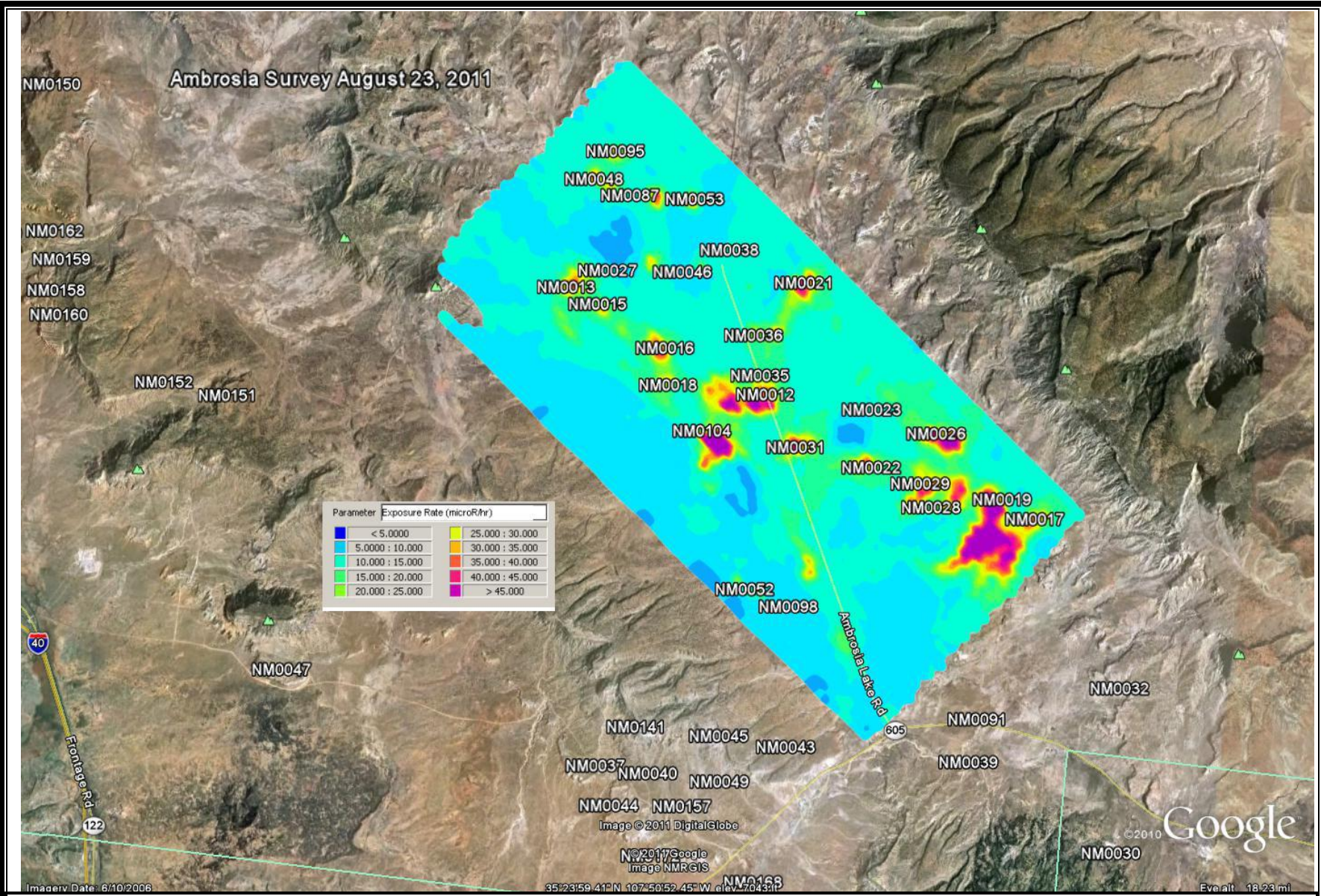


Figure 2. U.S. EPA ASPECT Exposure Rate Contour Map of Ambrosia Lake Mining District.