



**NEW MEXICO ENVIRONMENT DEPARTMENT**  
Uranium Mine Reclamation Program  
PUBLIC INVOLVEMENT PLAN  
(PIP)



**Site Name:** Schmitt Decline Mine (NM0261)

**Site Location:** 1.22 air-miles west-northwest of the intersection of State Highway 509 and State Highway 605  
35°20'58.9"N 107°48'13.0"W  
SW¼ of the SW¼ of Section 16, Township 13 North, Range 9 West

**County:** McKinley County

**Responsible Party:** Uranium Mine Reclamation Program  
Harold Runnels Building  
1190 South Saint Francis Drive  
Santa Fe, NM 87505

**Agency:** New Mexico Environment Department  
Office of the Secretary  
Office of Strategic Initiatives

**Action:** Uranium Mine Reclamation

**Contact:** Jorge A. Munoz-Negron  
Uranium Project Lead  
(505) 690-5897  
[jorge.munoz-negron@env.nm.gov](mailto:jorge.munoz-negron@env.nm.gov)

**EFFECTIVE DATE:** August 15, 2025

**REVISION DATE:** N/A

---

**Jorge Munoz-Negron, NMED Uranium Project Lead**

## Element 1 – Public Involvement Plan (PIP) Overview

The New Mexico Environment Department (NMED), Uranium Mine Reclamation Program has developed this PIP for the for the reclamation of abandoned uranium mine Schmitt Decline Mine (NM0261; Site).

The purpose of this PIP is to plan for providing public participation opportunities and information that may be needed for the community to participate in the uranium mine reclamation process for this Site. This PIP identifies information about the community and resources needed by the NMED to incorporate community participation activities into the decision-making process. This PIP is developed in accordance with the Department’s *Public Participation Policy* (Policy 07-13), and incorporates the requirements of the Policy, as well as applicable regulatory and statutory public participation requirements.

This PIP implements the “elements” set forth in the Policy. Those elements include:

1. An overview of the Public Involvement Plan for the community affected by the activity.
2. NMED contact names and contact information, specifically for Limited English Proficiency (LEP) language assistance services (e.g., translation, interpreters) or for disability accommodations.
3. A summary of the regulatory public participation framework associated with uranium mine reclamation.
4. A description of community/stakeholder groups based on results of a preliminary environmental justice (EJ) screening.
5. Details about planned public outreach activities.

In developing this PIP, community participation needs were assessed to ensure appropriate public outreach. This was accomplished by identifying whether there is a combination of environmental and demographic factors that may impact public participation (e.g., low-income community, minority community, LEP individuals, linguistically isolated households). Because the community located near the Site does not include a significant percentage of Spanish speakers, however, the NMED will provide appropriate information in both English and Spanish. In addition, the NMED will work to determine what Native languages are spoken in the community located near the Site and modify this PIP as needed.

Public involvement associated with uranium mine reclamation occurs at different stages and in different forms. Public involvement activities required by statute or regulation are mandatory and subject to statutory or regulatory deadlines. Mandatory public involvement activities and associated time requirements relevant to this PIP are noted in the *Table of Mandated Public Involvement Activities* at the end of this PIP.

The NMED plans to conduct the public involvement activities related to uranium mine reclamation outlined in the *Table of Public Involvement Activities* below. The activity timeline and dates are tentative and subject to change.

### Table of Public Involvement Activities

Activity	Date
<p style="text-align: center;"><b>Public Notice (PN-1)</b></p> <p style="text-align: center;">See <i>Table of Mandated Public Involvement Activities</i> at the end of this PIP for details.</p>	August 29, 2025
<p style="text-align: center;"><b>Placement of a hardcopy of the PIP:</b></p> <p style="text-align: center;">New Mexico State University Grants Library 1500 North Third Street Grants, New Mexico 87020 505.287.6638</p> <p style="text-align: center;">Grants Public Library 1101 1st Street Grants, New Mexico 87020 505.287.4793</p>	August 29, 2025
<p style="text-align: center;"><b>Notice of availability of Project Documents (PN-2)</b></p> <p style="text-align: center;">See <i>Table of Mandated Public Involvement Activities</i>.</p>	As Required

All notices for upcoming meetings or hearings will include a statement that any person who requires assistance, an interpreter, or auxiliary aid to participate in the process may contact an NMED person identified below to request those services. Requested interpretation services during the meeting and accommodations or services for persons with disabilities will be arranged to the extent possible.

This PIP is a “living” document that may be amended for numerous reasons, including the consideration of public comments and feedback.

## Element 2 – NMED Contact Information

### PIP Specific Contacts

The NMED contact for this Site is:

Jorge A. Munoz-Negron  
 Uranium Project Lead  
 Harold Runnels Building  
 1190 South Saint Francis Drive  
 Santa Fe, NM 87505  
 (505) 690-5897  
[jorge.munoz-negron@env.nm.gov](mailto:jorge.munoz-negron@env.nm.gov)

## **Non-English Language Speaker Assistance**

All public notices will contain a statement that non-English speakers may call the NMED contact listed above and request language assistance in order to learn more about this uranium mine reclamation or the uranium mine reclamation process. Arrangements may be made for document translation or interpretation related to the uranium mine reclamation process as necessary and as resources allow.

## **Individuals with Disabilities Assistance**

All public notices will contain a statement that individuals with disabilities may call the NMED contact listed above, and request assistance needed to participate in activities associated with the uranium mine reclamation process.

The following information will be provided in public notices so that individuals who are deaf, hard of hearing, or have difficulty speaking on the phone can contact the NMED and ask questions about the activity or proceeding: Telephone conversation assistance is available through Relay New Mexico at no charge for people who are deaf, hard of hearing, or have difficulty speaking on the phone, by calling 1-800-659-1779 (English); 1-800-327-1857 (Spanish); TTY users: 1-800-659-8331.

## **Websites**

Outreach materials and notices will include links to the following website, where the NMED's public notices and PIP information are posted:

NMED – <https://www.env.nm.gov/public-notices/>

## **Element 3 – Regulatory Framework for Public Participation Related to the Uranium Mine Reclamation Process**

The public participation regulatory framework associated with the uranium mine reclamation process is identified in the *Table of Mandated Public Involvement Activities* at the end of this PIP. The table identifies activities subject to statutory or regulatory deadlines, the associated regulatory requirements, and the associated dates or time periods.

## **Element 4 – Description of Community/Stakeholder Groups Based on the EJSCREEN**

### **EJScreen Summary**

To provide for adequate public participation opportunities and meaningful involvement of persons in the uranium mine reclamation process, the affected communities must first be identified, informed about proposed environmental actions affecting the community, and

invited to share their comments and concerns. The EJScreen tool developed by the U.S. Environmental Protection Agency (EPA) helps identify communities that are low income, have minority populations, and have limited English proficiency that may benefit from a variety of approaches for notification and outreach communication. This information is used to help plan for the community’s involvement in the public process for environmental activities or actions. In addition to the EJScreen results, the NMED may consider additional information such as the U.S. Census Bureau website or NMED’s EJ Mapping Tool.

The NMED considers the affected community to be those persons living within a 5-mile radius of the Site. The results of the EJScreen Community Report (attached to this PIP) are summarized in the table below.

**EJScreen Results for the Affected Community**

<b>Total population</b>	50
<b>Total number of households (under Community Information)</b>	20
<b>Percentage People of Color population (under Community Information)</b>	100%
<b>Percentage Hispanic population (under Breakdown by Race)</b>	6%
<b>Percentage of the population by race (under Breakdown by Race) Do not include percentage reporting two or more races.</b>	Population reporting one race: White:..... 0% Black: ..... 0% American Indian: ..... 94% Asian ..... 0% Pacific Islander..... 0% Some Other Race..... 0%
<b>Percentage of Total Non-English Languages Spoken at Home</b>	58%
<b>Percentage of Limited English households (under Community Information)</b>	6%
<b>Languages by percentage in Limited English-Speaking Breakdown</b>	Spanish: .....0% Other Indo-European languages: .....0% Asian-Pacific Island languages ..... 0% Other languages: .....100%
<b>Percent linguistically isolated population, New Mexico*</b>	5.1%
<b>Per capita income (under Community Information)</b>	\$12,310
<b>Per capita income, USA**</b>	\$35,384

**Notes:**

\* U.S. Census Bureau. 2020 American Community Survey 5-Year Estimates, Table S1602. Limited English-Speaking Households.

<https://data.census.gov/cedsci/table?q=S1602%3A%20LIMITED%20ENGLISH%20SPEAKING%20HOUSEHOLDS&g=0400000US35&tid=ACSS5Y2020.S1602> (date of access: 7/28/2025).

\*\* U.S. Census Bureau. 2020 American Community Survey 5-Year Estimates, Table B19301. Per Capita Income in the Past 12 Months (In 2020 Inflation-Adjusted Dollars).

<https://data.census.gov/cedsci/table?q=per%20capita%20income&tid=ACSDT5Y2020.B19301>. (Date of access: 7/28/2025).

The EJScreen results indicate that for the affected community that 42% speak only English at home while 58% speak non-English (other languages) at home, however 53% of the 58% speak English “very well”. Therefore, the EJScreen results determine the proportion of the population with limited English proficiency (LEP) is not significant. Additionally, NMED has performed a LEP Assessment for the community and attached it to this PIP.

NMED will consider the language and communication needs of this community when conducting public outreach and participation activities. To accomplish this the NMED, to the extent its budget and time limitations allow, will provide the same information in Spanish as in English in public comment notices, public meeting notices, and other announcements (e.g., radio broadcasts, brochures, signs, postcards) and will strive to make public participation efforts as inclusive as possible. See Element 5 for more specifics on the public outreach and participation activities.

## **Element 5 – Detailed Actions and Outreach Activities with the Affected Public**

Public involvement activities required by statute or regulation for this uranium mine reclamation action are listed in the *Table of Mandated Public Involvement Activities* at the end of this document.

### **Public Participation – Outreach Activities**

The NMED will conduct the following outreach activities during this uranium mine reclamation process:

- Placement of this PIP in the New Mexico State University Grants Library and Grants Public Library
- Postal mailing notices to local residents
- Email notices to New Mexico Land Grants and Tribal Leadership
- Newspaper notices
- Notices posted on NMED website

Newspapers to be utilized in the notification process include:

- Statewide circulation (English): Albuquerque Journal
- Local circulation (English): Cibola Citizen

New Mexico Land Grants and Tribal Leadership within 35-miles of the site will be notified and include:

<b>Point of Contact(s)</b>	<b>Email / Phone Number</b>	<b>Address</b>
Cebolleta Land Grant Kilino Marquez, President	Kilino.Marquez@yahoo.com 505-639-3081	HC 77 PO Box 6 Seboyeta, NM 87014
Cubero Land Grant James Chávez, President	jamesdeanchavez@gmail.com (505) 379-8426	PO Box 216 Cubero, NM 87014
Pueblo of Acoma	Governor Charles Riley governor@poamail.org 505-552-6604  Franklin Martinez, DNR Director fmartinez@poamail.org 505-552-5161x5562  Donna Martinez, Environment Coordinator dmartinez@poamail.org 505-552-5161	PO Box 309 Acoma, NM 87034
Pueblo of Laguna	Governor Harry Antonio, Jr. manalla@lagunapueblo-nsn.gov - assistant 505-552-6654  Gregory Jojola, Environmental Manager gjojola@pol-nsn.gov 505-552-5041	PO Box 194 Laguna Pueblo, NM 87026
Navajo Nation	President Buu Nygren President.buunygren@navajo-nsn.gov alray.nelson@navajo-nsn.gov - assistant 928-871-6000  Stephen Etsitty, EPA Executive Director s.etsitty@navajo-nsn.gov 928-871-7735 – O 928-551-2189 - C	PO Box 7440 Window Rock, AZ 86515  PO Box 339 Window Rock, AZ 86515
Navajo Nation Council	Crystalyne Curley, Office of the Speaker crystalyne.curley@navajo-nsn.gov 928-871-7160  Stephen Etsitty, EPA Executive Director s.etsitty@navajo-nsn.gov 928-871-7735 – O 928-551-2189 - C	PO Box 3390 Window Rock, AZ 86515

Local, state, and federal government agencies and tribal entities will be notified about the uranium mine reclamation process. A list of the agencies and officials notified can be provided upon request.

Indian Tribes, Pueblos and Nations will be notified about the uranium mine reclamation

action through the contacts maintained by the Indian Affairs Department at the following URLs:

<https://www.iad.state.nm.us/pueblo-tribes-and-nations/pueblos/>  
<https://www.iad.state.nm.us/pueblo-tribes-and-nations/navajo/>  
<https://www.iad.state.nm.us/pueblo-tribes-and-nations/apaches/>

Timelines and methods for submitting public comments are specified in the *Table of Mandated Public Involvement Activities*. Final uranium mine reclamation documents will be available from the NMED's contact identified in Element 2 of this PIP and provided in hard copy at the New Mexico State University Grants Library and Grants Public Library.

### **Postal Mailing or E-Mailing of Notices to Persons on the Site-Specific Mailing List**

The NMED solicits the names and contact information of interested parties with all public notices. The NMED maintains those names on a Site-Specific Mailing List and provides the individuals with information about regulatory activities for the Site. Individuals, organizations, and other interested parties are added to the mailing list as requested. All public notices will contain a statement directing interested individuals to contact the NMED contact for this uranium mine reclamation if they want to be added to the Site-specific mailing list.

Other means of outreach such as fliers announcing public comment periods and/or public meetings or hearings may be posted in locations throughout the community (e.g., local businesses, schools, libraries) and on the NMED's website, at the NMED's discretion after consideration of public interest and input.

### **PIP Contingency Plan**

During a public health emergency or other unforeseen event outside the control of NMED, the NMED will make every effort to ensure the public remains involved in and informed of the decision making and uranium mine reclamation processes. The purpose of this PIP Contingency Plan is in part to address circumstances when public spaces are closed because of potential human exposure risks. The NMED will attempt to identify and utilize alternate methods of document delivery to the public and public viewing when conventional methods and locations are unavailable. When it is unsafe to utilize the physical PIP and document repositories, the NMED will consider utilizing electronic delivery methods deemed appropriate for the uranium mine reclamation activities. While operating under the PIP Contingency Plan, the PN-2 will include a statement specifying that the PIP Contingency Plan is in effect and that, "instead of placing a copy of the PIP for this uranium mine reclamation action in a public location, NMED will make the PIP available to the community by sending the PIP by email or United States mail to any community member requesting a copy. An individual may request a copy of the PIP utilizing the NMED contact information in this public notice. When making such a request, please specify how you would like the document to be delivered. If you request a copy of a PIP, you will receive a revised PIP should the PIP be updated in the future." During the times of potential human exposure risks and the resultant implementation of this PIP Contingency Plan, public meetings and hearings will only be held when or through means by which NMED can ensure the public's health and safety, and this PIP can be fully adhered to.

**Attachments**

- LEP Assessment
- A copy of the EJScreen Community Report.

**Table of Mandated Public Involvement Activities**

Activity	Dates
<p><b>Public Notice (PN-1):</b> NMED’s notice of the uranium mine reclamation activities – NMED’s obligations at 20.6.2.3108.E NMAC</p> <ul style="list-style-type: none"> <li>• Placement of this PIP in the New Mexico State University Grants Library and Grants Public Library</li> <li>• Postal mailing notices to local residents</li> <li>• Newspaper ads (PN-1 synopsis<sup>2</sup> in English and Spanish)</li> <li>• Email notices to New Mexico Land Grants and Tribal Leadership</li> <li>• NMED website <a href="https://www.env.nm.gov/public-notices/">https://www.env.nm.gov/public-notices/</a></li> </ul>	August 29, 2025
<p><b>Public Notice (PN-2) (as required):</b> Notice to the public of the project documentation review and comment period – the notice will outline the process for requesting a public hearing – NMED’s obligation at 20.6.2.3108.H through J NMAC</p> <ul style="list-style-type: none"> <li>• Placement of this PIP in the New Mexico State University Grants Library and Grants Public Library</li> <li>• Postal mailing notices to local residents</li> <li>• Newspaper ads (PN-2 synopsis<sup>2</sup> in English and Spanish)</li> <li>• Email notices to New Mexico Land Grants and Tribal Leadership</li> <li>• NMED website <a href="https://www.env.nm.gov/public-notices/">https://www.env.nm.gov/public-notices/</a></li> </ul>	As Required
<p><b>Fact Sheet (if required):</b> To include general information regarding the Site, uranium mine reclamation processes and procedures, the comment period, procedures for a person to request a hearing, contact information to obtain a copy of project documentation and fact sheet – NMED’s obligation at 20.6.2.3108.I NMAC<sup>3</sup></p>	With the PN-2
<p><b>Public Hearing Notice (if required):</b> Upon the NMED’s determination that there is substantial public interest – NMED’s obligation at 20.6.2.3108.M NMAC. Information on how to participate in the hearing, and how to request an interpreter or auxiliary aid if needed.</p> <ul style="list-style-type: none"> <li>• Placement of this PIP in the New Mexico State University Grants Library and Grants Public Library</li> <li>• Postal mailing notices to local residents</li> <li>• Newspaper ads (PN-2 synopsis<sup>2</sup> in English and Spanish)</li> <li>• Email notices to New Mexico Land Grants and Tribal Leadership</li> <li>• NMED website <a href="https://www.env.nm.gov/public-notices/">https://www.env.nm.gov/public-notices/</a></li> </ul>	Notice of the hearing shall occur at least 30 days prior to the hearing.

<p><b>Response to Comments (if comments received):</b> Upon the Secretary’s decision regarding issuance of uranium mine reclamation processes and procedures. The Response to Comments shall specify which provisions, if any, were changed and the reasons for the change and shall briefly describe and respond to all significant comments on the uranium mine reclamation processes and procedures during the public comment period or at any hearing. The Secretary shall notify persons who participated in the uranium mine reclamation action by mail or email of the action taken and the reasons for such action and shall include a copy of the Response to Comments.</p>	<p>Response is issued 30 days after the administrative record is complete and all required information is available.</p>
--	--

---

<sup>1</sup> Suitable for display, the abbreviated format of the PN-1 synopsis does not contain all the information provided by full public notice, e.g., language assistance or non-discrimination information.

<sup>2</sup> Suitable for display, the abbreviated format of the PN-1 synopsis does not contain all the information provided by full public notice, e.g., language assistance or non-discrimination information.

<sup>3</sup> NMED considers the cited regulation to more appropriately reference the information in 20.6.2.3108.K instead distribution methods of 20.6.2.3108.J NMAC.

**ATTACHMENT**  
**Limited English Proficiency (LEP) Assessment**  
**Site: Schmitt Decline Mine (NM0261)**

**Factor 1: The Number and Proportion of LEP Individuals Eligible to be Served or Likely to be Encountered in Community of Concern**

See Public Involvement Plan (PIP), Table of EJScreen Results for the Affected Community.

Conclusions:

1. The percentage of total non-English languages (other languages) spoken at home is 58%, however, 53% of the 58% speak English “very well”.
2. The percentage of limited English households is 5%, which is somewhat greater than the statewide average.
3. Historical Participation: A review of the administrative record for this Site indicates it has proximity to the Environmental Protection Agency San Mateo Creek Basin Site that had high public interest/participation overall during the past 10 years. However, the public interest specific to this Site cannot be determined from the administrative record.

**Factor 2: Frequency with which LEP Individuals Might Come in Contact with the Program**

Contact with the uranium mine reclamation process primarily occurs when project activities and documentation is provided to the public. NMED provides notice to the public and encourages participation. Individuals may participate by requesting information, submitting comments, requesting hearings, and taking part in hearings. Historical participation in uranium mine reclamation activities for this Site and the San Mateo Creek Basin is summarized under Factor 1.

Conclusions:

1. LEP participation and overall public interest in this specific-Site are limited.
2. LEP participation and overall public interest in Environmental Protection Agency San Mateo Creek Basin Site was historically high.
3. Based on these conclusions, the NMED considers the potential for LEP contact with the uranium mine reclamation process at this specific-Site to be “moderate”.

**Factor 3: Nature and Importance of the Activity or Service Provided by the Program**

This mine reclamation of abandoned uranium mines is deemed by the NMED to be "important", the impacted community, and the State of New Mexico. Uranium mine reclamation is important to NMED because this action is protective of public health from legacy uranium mining activities. Legacy abandoned uranium mines have the potential

to pose a public nuisance and adversely affect the quality of life of people living in the vicinity of the Site.

Conclusion:

The NMED considers mine reclamation of the Site “important”, to the State of New Mexico as a whole, and to the impacted community.

**Factor 4: Resources Available to NMED for LEP Services and Associated Costs**

For outreach to LEP communities for Spanish, NMED employs an in-house Spanish translator/interpreter, utilizes a phone interpretation service to assist during direct communication between LEP individuals and NMED staff, and employs interpretive services for a public meetings or hearings. For other languages, NMED will to the best extent possible incorporate into the NMED’s budget to aid in outreach to the LEP communities.

Conclusion:

NMED can accommodate the costs of the LEP services for English and Spanish identified in this PIP. If additional services are requested for other languages, NMED budgetary implications will be reviewed and accessed.

**LEP Services Plan:**

To accommodate the needs of the LEP individuals who may be interested in this uranium mine reclamation process, NMED plans to:

1. Translate Public Notices (PN-1 and PN-2) and any subsequent public notices into Spanish and publish in a (if available Spanish-language) paper serving the local community.
2. Provide Spanish interpretive services at any public meeting or public hearing, if requested.
3. Interact with members of the LEP community using certified Spanish interpreters, when needed and feasible.

NMED will consider requests from members of the affected community for additional LEP services.

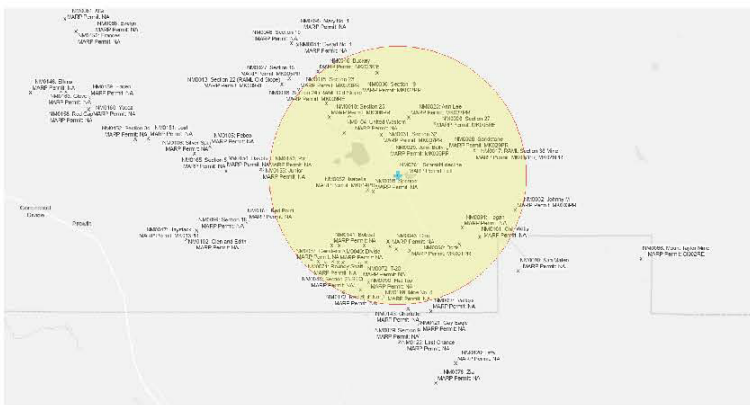


# EJScreen Community Report

This report provides environmental and socioeconomic information for user-defined areas, and combines that data into environmental justice and supplemental indexes.

## Schmidt decline NM0261

5 miles Ring Centered at 35.381825,-107.803060  
Population: 50  
Area in square miles: 78.53



September 25, 2024

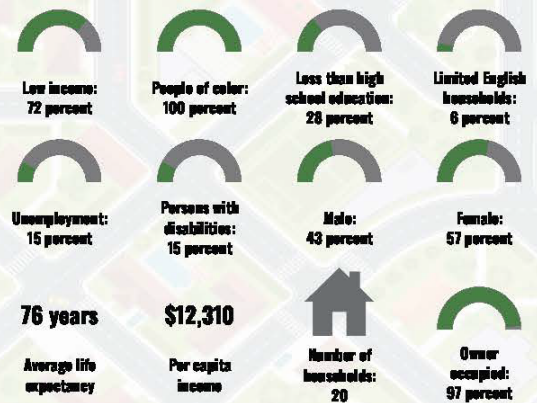
Schmidt decline NM0261  
Abandoned Uranium Mines

1:119,415

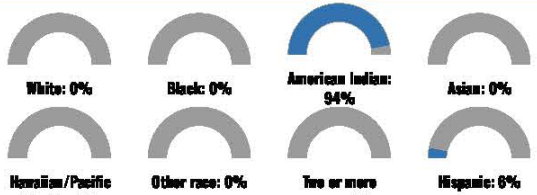
0 16 32 48 64 Miles

Source: U.S. Census Bureau, 2018-2022. Life expectancy data comes from the Centers for Disease Control.

### COMMUNITY INFORMATION



### BREAKDOWN BY RACE



### BREAKDOWN BY AGE



### LIMITED ENGLISH SPEAKING BREAKDOWN



Notes: Numbers may not sum to totals due to rounding. Hispanic population can be of any race. Source: U.S. Census Bureau, American Community Survey (ACS) 2018-2022. Life expectancy data comes from the Centers for Disease Control.

### LANGUAGES SPOKEN AT HOME

LANGUAGE	PERCENT
No language data available.	

Report for 5 miles Ring Centered at 35.381825,-107.803060  
Report produced September 25, 2024 using EJScreen Version 2.3

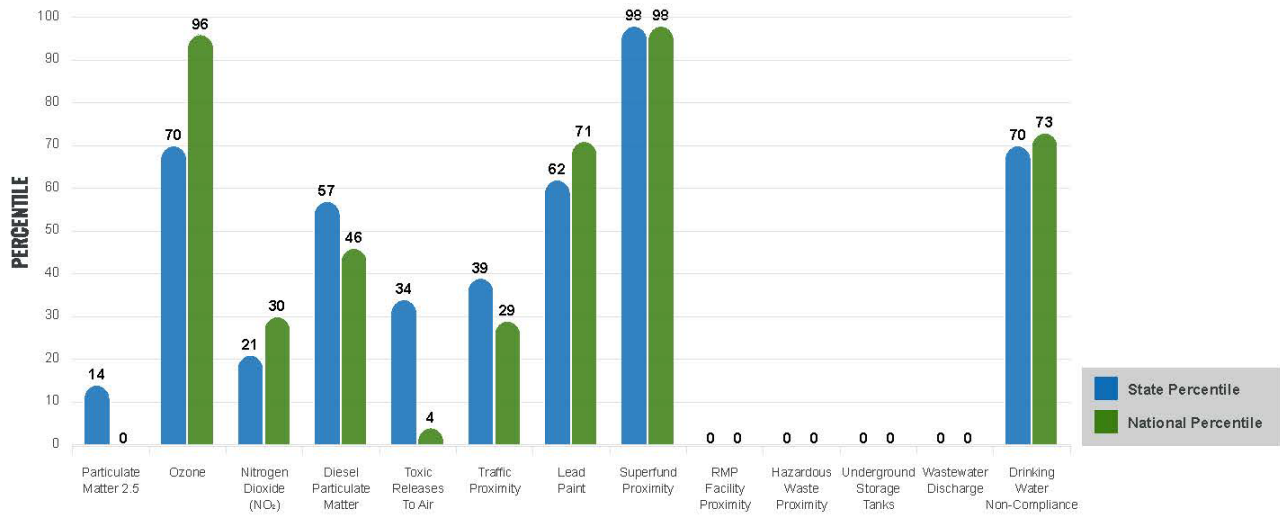
## Environmental Justice & Supplemental Indexes

The environmental justice and supplemental indexes are a combination of environmental and socioeconomic information. There are thirteen EJ indexes and supplemental indexes in EJScreen reflecting the 13 environmental indicators. The indexes for a selected area are compared to those for all other locations in the state or nation. For more information and calculation details on the EJ and supplemental indexes, please visit the [EJScreen website](#).

### EJ INDEXES

The EJ indexes help users screen for potential EJ concerns. To do this, the EJ index combines data on low income and people of color populations with a single environmental indicator.

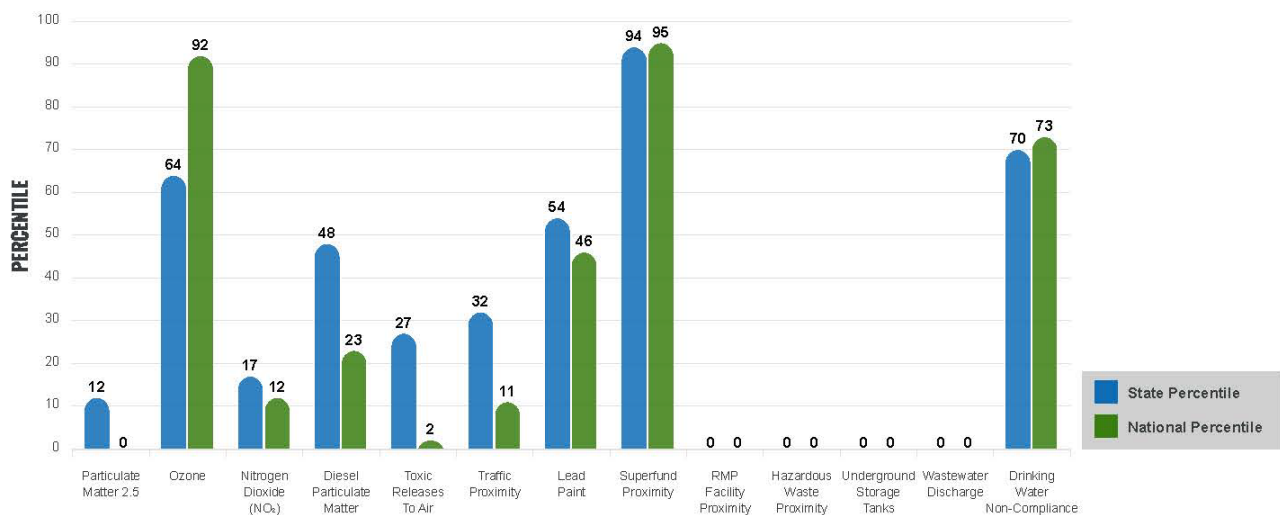
#### EJ INDEXES FOR THE SELECTED LOCATION



### SUPPLEMENTAL INDEXES

The supplemental indexes offer a different perspective on community-level vulnerability. They combine data on percent low income, percent persons with disabilities, percent less than high school education, percent limited English speaking, and percent low life expectancy with a single environmental indicator.

#### SUPPLEMENTAL INDEXES FOR THE SELECTED LOCATION



Report for 5 miles Ring Centered at 35.381825,-107.803060

Report produced September 25, 2024 using EJScreen Version 2.3

# EJScreen Environmental and Socioeconomic Indicators Data

SELECTED VARIABLES	VALUE	STATE AVERAGE	PERCENTILE IN STATE	USA AVERAGE	PERCENTILE IN USA
<b>ENVIRONMENTAL BURDEN INDICATORS</b>					
Particulate Matter 2.5 (µg/m <sup>3</sup> )	4.69	6.11	7	8.45	0
Ozone (ppb)	64.7	65.3	37	61.8	69
Nitrogen Dioxide (NO <sub>2</sub> ) (ppbv)	3	8.1	10	7.8	6
Diesel Particulate Matter (µg/m <sup>3</sup> )	0.0618	0.187	30	0.191	12
Toxic Releases to Air (toxicity-weighted concentration)	0.002	29	16	4,600	1
Traffic Proximity (daily traffic count/distance to road)	21,000	730,000	20	1,700,000	7
Lead Paint (% Pre-1960 Housing)	0.051	0.19	37	0.3	27
Superfund Proximity (site count/km distance)	0.61	0.34	89	0.39	86
RMP Facility Proximity (facility count/km distance)	0	0.2	0	0.57	0
Hazardous Waste Proximity (facility count/km distance)	0	1.2	0	3.5	0
Underground Storage Tanks (count/km <sup>2</sup> )	0	2.8	0	3.6	0
Wastewater Discharge (toxicity-weighted concentration/m distance)	0	990000	0	700000	0
Drinking Water Non-Compliance (points)	0.037	5.6	70	2.2	73
<b>SOCIOECONOMIC INDICATORS</b>					
Demographic Index USA	3.26	N/A	N/A	1.34	97
Supplemental Demographic Index USA	2.53	N/A	N/A	1.64	89
Demographic Index State	3.66	2.16	96	N/A	N/A
Supplemental Demographic Index State	2.26	1.62	83	N/A	N/A
People of Color	100%	62%	97	40%	97
Low Income	72%	39%	90	30%	94
Unemployment Rate	16%	6%	89	6%	92
Limited English Speaking Households	6%	6%	69	5%	78
Less Than High School Education	28%	14%	85	11%	90
Under Age 5	7%	5%	70	5%	67
Over Age 64	11%	20%	25	18%	29

\*Diesel particulate matter Index is from the EPA's Air Toxics Data Update, which is the Agency's ongoing, comprehensive evaluation of air toxics in the United States. This effort aims to prioritize air toxics, emission sources, and locations of interest for further study. It is important to remember that the air toxics data presented here provide broad estimates of health risks over geographic areas of the country, not definitive risks to specific individuals or locations. More information on the Air Toxics Data Update can be found at: <https://www.epa.gov/raa/air-toxics-data-update>.

**Sites reporting to EPA within defined area:**

Superfund .....	1
Hazardous Waste, Treatment, Storage, and Disposal Facilities .....	0
Water Dischargers .....	28
Air Pollution .....	0
Brownfields .....	0
Toxic Release Inventory .....	0

**Other community features within defined area:**

Schools .....	0
Hospitals .....	0
Places of Worship .....	0

**Other environmental data:**

Air Non-attainment .....	No
Impaired Waters .....	Yes

Selected location contains American Indian Reservation Lands* .....	Yes
Selected location contains a "Justice40 (CEJST)" disadvantaged community .....	Yes
Selected location contains an EPA IRA disadvantaged community .....	Yes

Report for 5 miles Ring Centered at 35.381825,-107.803060  
 Report produced September 25, 2024 using EJScreen Version 2.3

## EJScreen Environmental and Socioeconomic Indicators Data

HEALTH INDICATORS					
INDICATOR	VALUE	STATE AVERAGE	STATE PERCENTILE	US AVERAGE	US PERCENTILE
Low Life Expectancy	23%	19%	79	20%	78
Heart Disease	9.2	5.9	96	5.8	95
Asthma	15.8	11.2	99	10.3	99
Cancer	5.2	6.1	30	6.4	25
Persons with Disabilities	15%	17.1%	42	13.7%	64

CLIMATE INDICATORS					
INDICATOR	VALUE	STATE AVERAGE	STATE PERCENTILE	US AVERAGE	US PERCENTILE
Flood Risk	19%	9%	88	12%	84
Wildfire Risk	1%	58%	28	14%	78

CRITICAL SERVICE GAPS					
INDICATOR	VALUE	STATE AVERAGE	STATE PERCENTILE	US AVERAGE	US PERCENTILE
Broadband Internet	65%	20%	97	13%	99
Lack of Health Insurance	20%	10%	92	9%	92
Housing Burden	No	N/A	N/A	N/A	N/A
Transportation Access Burden	Yes	N/A	N/A	N/A	N/A
Food Desert	Yes	N/A	N/A	N/A	N/A

*Report for 5 miles Ring Centered at 35.381825,-107.803060  
 Report produced September 25, 2024 using EJScreen Version 2.3*