

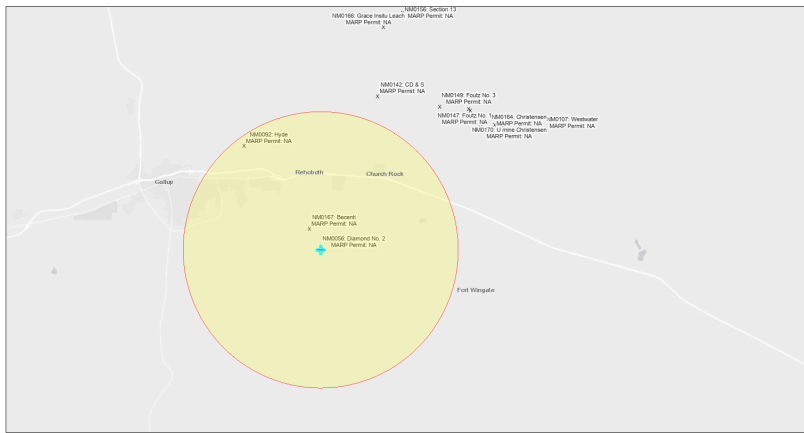


EJScreen Community Report

This report provides environmental and socioeconomic information for user-defined areas, and combines that data into environmental justice and supplemental indexes.

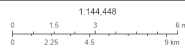
Diamond No. 2 NM0056

5 miles Ring Centered at 35.491844,-108.642597
Population: 10,586
Area in square miles: 78.53



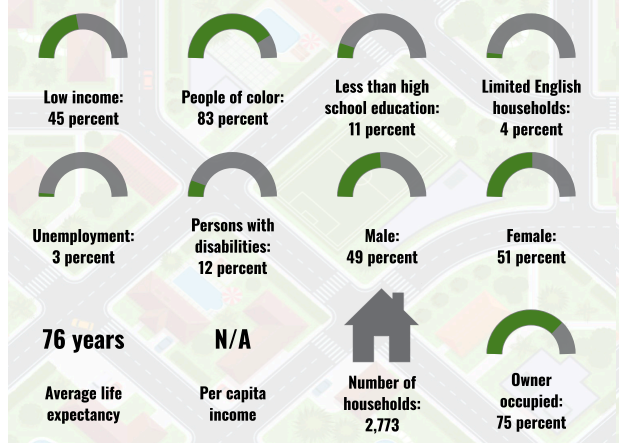
September 18, 2024

Diamond No. 2 NM0056
* Abandoned Uranium Mines

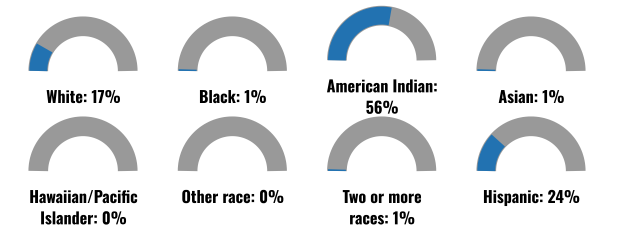


Bureau of Land Management, EPA, HERR, Geronimo, ISGEO, BIA, IHS, New Mexico Energy, Storage and Natural Resources Department, EIA, HERR, IHS

COMMUNITY INFORMATION



BREAKDOWN BY RACE



BREAKDOWN BY AGE



LIMITED ENGLISH SPEAKING BREAKDOWN



Notes: Numbers may not sum to totals due to rounding. Hispanic population can be of any race. Source: U.S. Census Bureau American Community Survey (ACS) 2018-2022. Life expectancy data comes from the Centers for Disease Control.

LANGUAGES SPOKEN AT HOME

LANGUAGE	PERCENT
English	64%
Spanish	8%
Tagalog (including Filipino)	1%
Arabic	1%
Other and Unspecified	25%
Total Non-English	36%

Report for 5 miles Ring Centered at 35.491844,-108.642597
Report produced September 18, 2024 using EJScreen Version 2.3

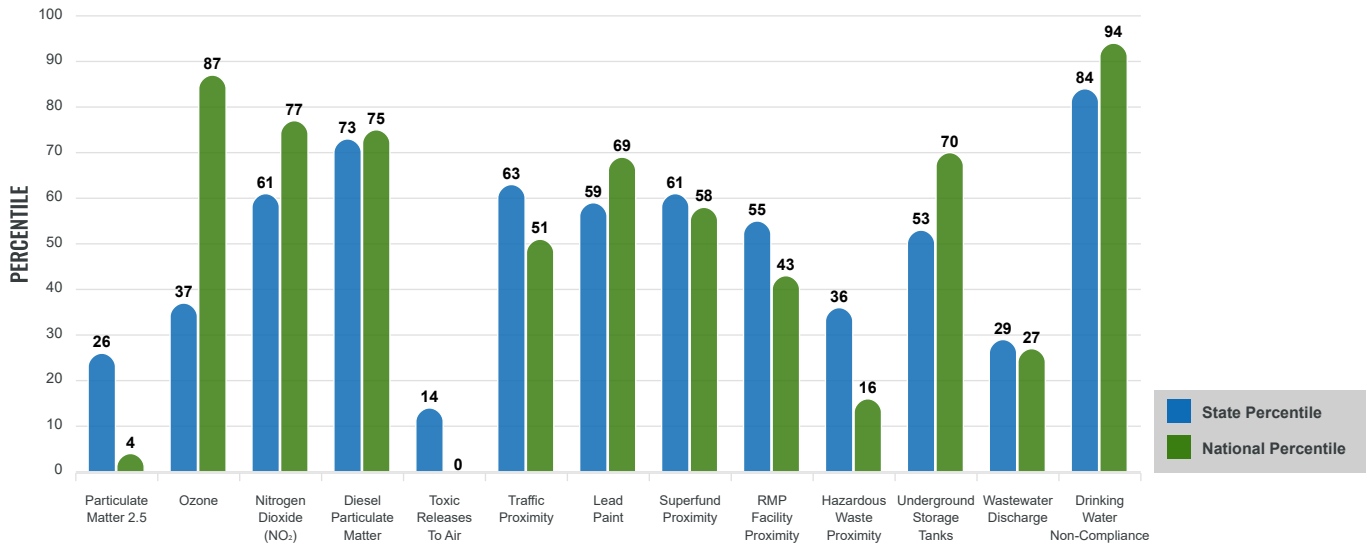
Environmental Justice & Supplemental Indexes

The environmental justice and supplemental indexes are a combination of environmental and socioeconomic information. There are thirteen EJ indexes and supplemental indexes in EJScreen reflecting the 13 environmental indicators. The indexes for a selected area are compared to those for all other locations in the state or nation. For more information and calculation details on the EJ and supplemental indexes, please visit the [EJScreen website](#).

EJ INDEXES

The EJ indexes help users screen for potential EJ concerns. To do this, the EJ index combines data on low income and people of color populations with a single environmental indicator.

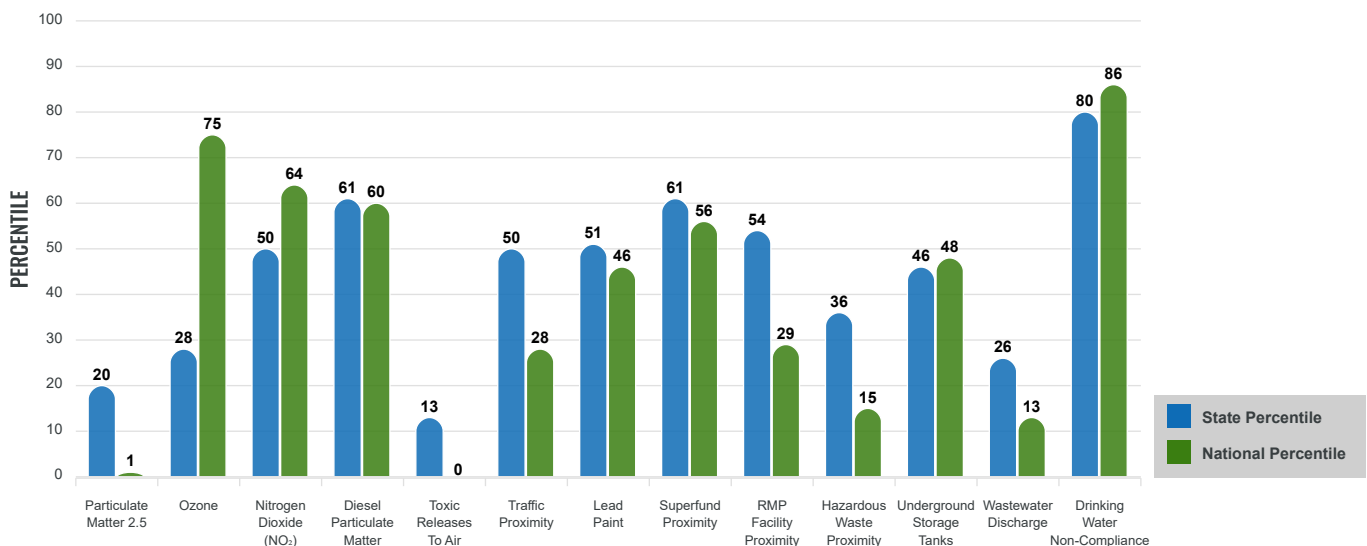
EJ INDEXES FOR THE SELECTED LOCATION



SUPPLEMENTAL INDEXES

The supplemental indexes offer a different perspective on community-level vulnerability. They combine data on percent low income, percent persons with disabilities, percent less than high school education, percent limited English speaking, and percent low life expectancy with a single environmental indicator.

SUPPLEMENTAL INDEXES FOR THE SELECTED LOCATION



Report for 5 miles Ring Centered at 35.491844,-108.642597

Report produced September 18, 2024 using EJScreen Version 2.3

EJScreen Environmental and Socioeconomic Indicators Data

SELECTED VARIABLES	VALUE	STATE AVERAGE	PERCENTILE IN STATE	USA AVERAGE	PERCENTILE IN USA
ENVIRONMENTAL BURDEN INDICATORS					
Particulate Matter 2.5 (µg/m ³)	5.02	6.11	17	8.45	1
Ozone (ppb)	63.3	65.3	26	61.8	64
Nitrogen Dioxide (NO ₂) (ppbv)	7.9	8.1	42	7.8	53
Diesel Particulate Matter (µg/m ³)	0.151	0.187	60	0.191	48
Toxic Releases to Air (toxicity-weighted concentration)	0	29	13	4,600	0
Traffic Proximity (daily traffic count/distance to road)	160,000	730,000	45	1,700,000	22
Lead Paint (% Pre-1960 Housing)	0.15	0.19	58	0.3	42
Superfund Proximity (site count/km distance)	0.015	0.34	61	0.39	56
RMP Facility Proximity (facility count/km distance)	0.044	0.2	53	0.57	28
Hazardous Waste Proximity (facility count/km distance)	0.005	1.2	35	3.5	15
Underground Storage Tanks (count/km ²)	1.1	2.8	55	3.6	53
Wastewater Discharge (toxicity-weighted concentration/m distance)	0.4	990000	40	700000	18
Drinking Water Non-Compliance (points)	0.89	5.6	74	2.2	77
SOCIOECONOMIC INDICATORS					
Demographic Index USA	2.37	N/A	N/A	1.34	85
Supplemental Demographic Index USA	1.76	N/A	N/A	1.64	62
Demographic Index State	2.71	2.16	70	N/A	N/A
Supplemental Demographic Index State	1.52	1.62	47	N/A	N/A
People of Color	83%	62%	76	40%	84
Low Income	45%	39%	60	30%	76
Unemployment Rate	3%	6%	42	6%	44
Limited English Speaking Households	4%	6%	61	5%	72
Less Than High School Education	11%	14%	51	11%	61
Under Age 5	6%	5%	69	5%	66
Over Age 64	12%	20%	28	18%	33

*Diesel particulate matter index is from the EPA's Air Toxics Data Update, which is the Agency's ongoing, comprehensive evaluation of air toxics in the United States. This effort aims to prioritize air toxics, emission sources, and locations of interest for further study. It is important to remember that the air toxics data presented here provide broad estimates of health risks over geographic areas of the country, not definitive risks to specific individuals or locations. More information on the Air Toxics Data Update can be found at: <https://www.epa.gov/haps/air-toxics-data-update>.

Sites reporting to EPA within defined area:

Superfund	0
Hazardous Waste, Treatment, Storage, and Disposal Facilities	0
Water Dischargers	75
Air Pollution	9
Brownfields	3
Toxic Release Inventory	0

Other community features within defined area:

Schools	6
Hospitals	1
Places of Worship	2

Other environmental data:

Air Non-attainment	No
Impaired Waters	Yes

Selected location contains American Indian Reservation Lands*	Yes
Selected location contains a "Justice40 (CEJST)" disadvantaged community	Yes
Selected location contains an EPA IRA disadvantaged community	Yes

Report for 5 miles Ring Centered at 35.491844,-108.642597

Report produced September 18, 2024 using EJScreen Version 2.3

EJScreen Environmental and Socioeconomic Indicators Data

HEALTH INDICATORS

INDICATOR	VALUE	STATE AVERAGE	STATE PERCENTILE	US AVERAGE	US PERCENTILE
Low Life Expectancy	21%	19%	64	20%	62
Heart Disease	6.6	5.9	69	5.8	68
Asthma	13	11.2	92	10.3	95
Cancer	5.5	6.1	35	6.4	29
Persons with Disabilities	11.6%	17.1%	21	13.7%	42

CLIMATE INDICATORS

INDICATOR	VALUE	STATE AVERAGE	STATE PERCENTILE	US AVERAGE	US PERCENTILE
Flood Risk	12%	9%	74	12%	72
Wildfire Risk	0%	58%	28	14%	78

CRITICAL SERVICE GAPS

INDICATOR	VALUE	STATE AVERAGE	STATE PERCENTILE	US AVERAGE	US PERCENTILE
Broadband Internet	32%	20%	79	13%	92
Lack of Health Insurance	19%	10%	89	9%	90
Housing Burden	No	N/A	N/A	N/A	N/A
Transportation Access Burden	Yes	N/A	N/A	N/A	N/A
Food Desert	Yes	N/A	N/A	N/A	N/A

Report for 5 miles Ring Centered at 35.491844,-108.642597

Report produced September 18, 2024 using EJScreen Version 2.3

Location: User-specified point center at 35.491844, -108.642597
 Ring (buffer): 5-miles radius
 Description: Diamond No. 2 NM0056

Summary of ACS Estimates		2018 - 2022
Population		10,586
Population Density (per sq. mile)		128
People of Color Population		8,767
% People of Color Population		83%
Households		2,773
Housing Units		3,102
Housing Units Built Before 1950		168
Per Capita Income		N/A
Land Area (sq. miles) (Source: SF1)		82.63
% Land Area		100%
Water Area (sq. miles) (Source: SF1)		0.04
% Water Area		0%

	2018 - 2022 ACS Estimates	Percent	MOE (±)
Population by Race			
Total	10,586	100%	557
Population Reporting One Race	9,957	94%	1,407
White	2,328	22%	264
Black	56	1%	42
American Indian	6,586	62%	603
Asian	118	1%	151
Pacific Islander	13	0%	26
Some Other Race	855	8%	321
Population Reporting Two or More Races	629	6%	276
Total Hispanic Population	2,532	24%	475
Total Non-Hispanic Population	8,054		
White Alone	1,819	17%	270
Black Alone	56	1%	42
American Indian Alone	5,903	56%	524
Non-Hispanic Asian Alone	117	1%	154
Pacific Islander Alone	13	0%	26
Other Race Alone	20	0%	28
Two or More Races Alone	126	1%	200
Population by Sex			
Male	5,212	49%	389
Female	5,375	51%	344
Population by Age			
Age 0-4	679	6%	105
Age 0-17	3,189	30%	366
Age 18+	7,398	70%	283
Age 65+	1,274	12%	155

Data Note: Detail may not sum to totals due to rounding. Hispanic population can be of any race.

N/A means not available. **Source:** U.S. Census Bureau, American Community Survey (ACS) 2018 - 2022

Location: User-specified point center at 35.491844, -108.642597

Ring (buffer): 5-miles radius

Description: Diamond No. 2 NM0056

	2018 - 2022 ACS Estimates	Percent	MOE (±)
Population 25+ by Educational Attainment			
Total	6,414	100%	334
Less than 9th Grade	155	2%	79
9th - 12th Grade, No Diploma	537	8%	147
High School Graduate	2,031	32%	203
Some College, No Degree	1,853	29%	226
Associate Degree	612	10%	116
Bachelor's Degree or more	1,227	19%	157
Population Age 5+ Years by Ability to Speak English			
Total	9,907	100%	540
Speak only English	6,067	61%	436
Non-English at Home ¹⁺²⁺³⁺⁴	3,840	39%	307
¹ Speak English "very well"	2,994	30%	247
² Speak English "well"	551	6%	155
³ Speak English "not well"	264	3%	152
⁴ Speak English "not at all"	32	0%	52
³⁺⁴ Speak English "less than well"	296	3%	159
²⁺³⁺⁴ Speak English "less than very well"	847	9%	177
Limited English Speaking Households*			
Total	112	100%	75
Speak Spanish	27	24%	43
Speak Other Indo-European Languages	0	0%	13
Speak Asian-Pacific Island Languages	0	0%	13
Speak Other Languages	85	76%	58
Households by Household Income			
Household Income Base	2,773	100%	136
< \$15,000	464	17%	136
\$15,000 - \$25,000	226	8%	95
\$25,000 - \$50,000	526	19%	81
\$50,000 - \$75,000	341	12%	75
\$75,000 +	1,216	44%	139
Occupied Housing Units by Tenure			
Total	2,773	100%	136
Owner Occupied	2,092	75%	140
Renter Occupied	681	25%	124
Employed Population Age 16+ Years			
Total	7,690	100%	439
In Labor Force	4,127	54%	285
Civilian Unemployed in Labor Force	129	3%	85
Not In Labor Force	3,563	46%	334

Data Note: Detail may not sum to totals due to rounding. Hispanic population can be of anyrace.

N/A means not available. **Source:** U.S. Census Bureau, American Community Survey (ACS)

*Households in which no one 14 and over speaks English "very well" or speaks English only.

Location: User-specified point center at 35.491844, -108.642597

Ring (buffer): 5-miles radius

Description: Diamond No. 2 NM0056

	2018 - 2022 ACS Estimates	Percent	MOE (±)
Population by Language Spoken at Home*			
Total (persons age 5 and above)	9,214	100%	604
English	5,874	64%	657
Spanish	765	8%	403
French, Haitian, or Cajun	3	0%	13
German or other West Germanic	24	0%	31
Russian, Polish, or Other Slavic	11	0%	18
Other Indo-European	4	0%	13
Korean	0	0%	13
Chinese (including Mandarin, Cantonese)	0	0%	13
Vietnamese	13	0%	23
Tagalog (including Filipino)	110	1%	86
Other Asian and Pacific Island	5	0%	17
Arabic	62	1%	112
Other and Unspecified	2,343	25%	335
Total Non-English	3,340	36%	892

Data Note: Detail may not sum to totals due to rounding. Hispanic population can be of any race.
 N/A means not available. **Source:** U.S. Census Bureau, American Community Survey (ACS) 2018 - 2022.
 *Population by Language Spoken at Home is available at the census tract summary level and up.