

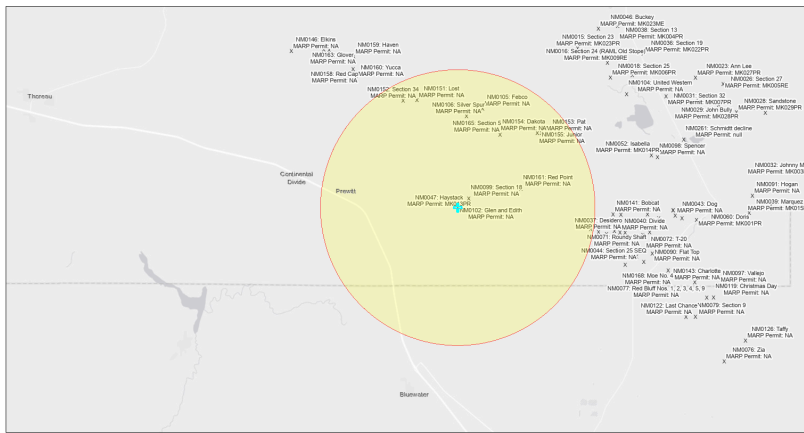


EJScreen Community Report

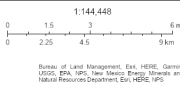
This report provides environmental and socioeconomic information for user-defined areas, and combines that data into environmental justice and supplemental indexes.

Glen and Edith NM0102

5 miles Ring Centered at 35.346089,-107.948704
 Population: 546
 Area in square miles: 78.53

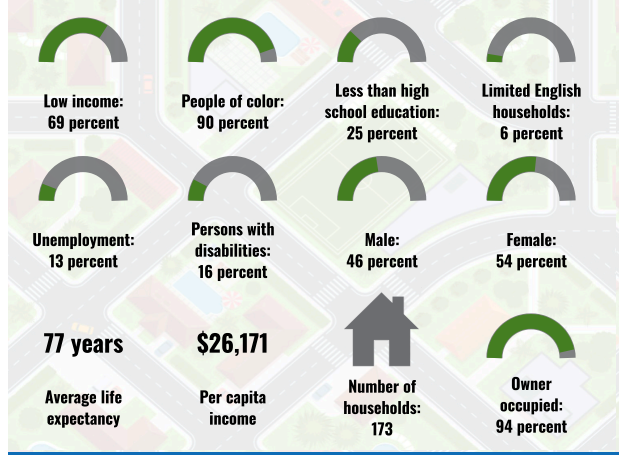


September 20, 2024
 * Glen and Edith NM0102
 * Abandoned Uranium Mines

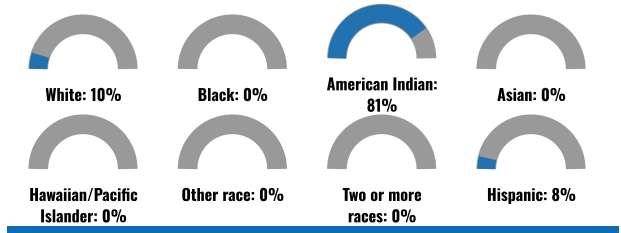


Bureau of Land Management, EPA, HERS, GeInfo, USGS, EPA, USFWS, New Mexico Energy, Minerals and Natural Resources Department, EPA, HERS, USFS

COMMUNITY INFORMATION



BREAKDOWN BY RACE



BREAKDOWN BY AGE



LIMITED ENGLISH SPEAKING BREAKDOWN



LANGUAGES SPOKEN AT HOME

LANGUAGE	PERCENT
English	31%
Other and Unspecified	69%
Total Non-English	69%

Notes: Numbers may not sum to totals due to rounding. Hispanic population can be of any race. Source: U.S. Census Bureau American Community Survey (ACS) 2018-2022. Life expectancy data comes from the Centers for Disease Control.

Report for 5 miles Ring Centered at 35.346089,-107.948704
 Report produced September 20, 2024 using EJScreen Version 2.3

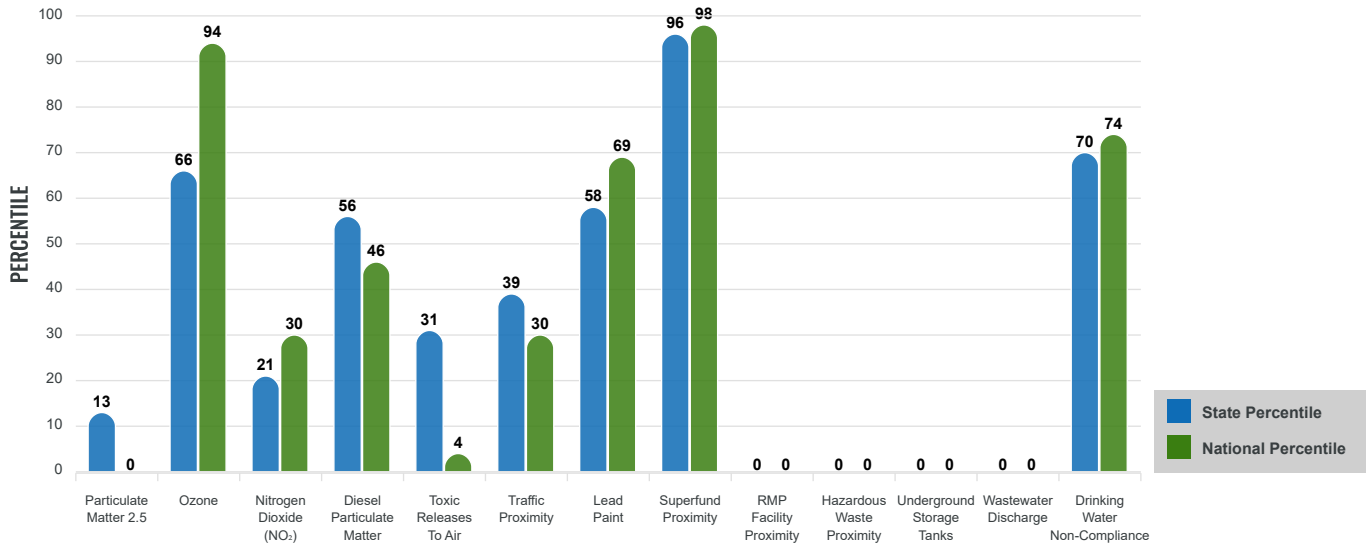
Environmental Justice & Supplemental Indexes

The environmental justice and supplemental indexes are a combination of environmental and socioeconomic information. There are thirteen EJ indexes and supplemental indexes in EJScreen reflecting the 13 environmental indicators. The indexes for a selected area are compared to those for all other locations in the state or nation. For more information and calculation details on the EJ and supplemental indexes, please visit the [EJScreen website](#).

EJ INDEXES

The EJ indexes help users screen for potential EJ concerns. To do this, the EJ index combines data on low income and people of color populations with a single environmental indicator.

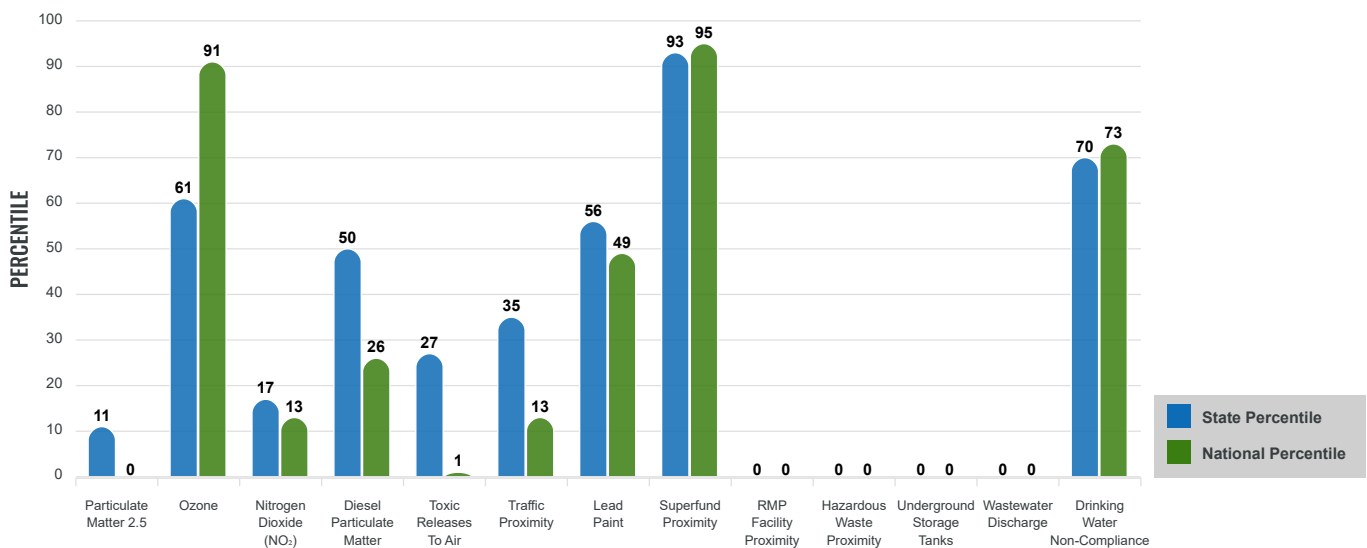
EJ INDEXES FOR THE SELECTED LOCATION



SUPPLEMENTAL INDEXES

The supplemental indexes offer a different perspective on community-level vulnerability. They combine data on percent low income, percent persons with disabilities, percent less than high school education, percent limited English speaking, and percent low life expectancy with a single environmental indicator.

SUPPLEMENTAL INDEXES FOR THE SELECTED LOCATION



Report for 5 miles Ring Centered at 35.346089,-107.948704

Report produced September 20, 2024 using EJScreen Version 2.3

EJScreen Environmental and Socioeconomic Indicators Data

SELECTED VARIABLES	VALUE	STATE AVERAGE	PERCENTILE IN STATE	USA AVERAGE	PERCENTILE IN USA
ENVIRONMENTAL BURDEN INDICATORS					
Particulate Matter 2.5 (µg/m ³)	4.66	6.11	6	8.45	0
Ozone (ppb)	64.6	65.3	37	61.8	69
Nitrogen Dioxide (NO ₂) (ppbv)	3.1	8.1	10	7.8	7
Diesel Particulate Matter (µg/m ³)	0.0665	0.187	33	0.191	14
Toxic Releases to Air (toxicity-weighted concentration)	0.001	29	16	4,600	1
Traffic Proximity (daily traffic count/distance to road)	28,000	730,000	22	1,700,000	8
Lead Paint (% Pre-1960 Housing)	0.072	0.19	42	0.3	31
Superfund Proximity (site count/km distance)	0.79	0.34	91	0.39	89
RMP Facility Proximity (facility count/km distance)	0	0.2	0	0.57	0
Hazardous Waste Proximity (facility count/km distance)	0	1.2	0	3.5	0
Underground Storage Tanks (count/km ²)	0	2.8	0	3.6	0
Wastewater Discharge (toxicity-weighted concentration/m distance)	0	990000	0	700000	0
Drinking Water Non-Compliance (points)	0.44	5.6	73	2.2	75
SOCIOECONOMIC INDICATORS					
Demographic Index USA	3.03	N/A	N/A	1.34	95
Supplemental Demographic Index USA	2.46	N/A	N/A	1.64	88
Demographic Index State	3.38	2.16	91	N/A	N/A
Supplemental Demographic Index State	2.18	1.62	80	N/A	N/A
People of Color	90%	62%	83	40%	88
Low Income	69%	39%	88	30%	93
Unemployment Rate	12%	6%	81	6%	86
Limited English Speaking Households	5%	6%	65	5%	76
Less Than High School Education	25%	14%	82	11%	88
Under Age 5	5%	5%	62	5%	57
Over Age 64	18%	20%	52	18%	58

*Diesel particulate matter index is from the EPA's Air Toxics Data Update, which is the Agency's ongoing, comprehensive evaluation of air toxics in the United States. This effort aims to prioritize air toxics, emission sources, and locations of interest for further study. It is important to remember that the air toxics data presented here provide broad estimates of health risks over geographic areas of the country, not definitive risks to specific individuals or locations. More information on the Air Toxics Data Update can be found at: <https://www.epa.gov/haps/air-toxics-data-update>.

Sites reporting to EPA within defined area:

Superfund	1
Hazardous Waste, Treatment, Storage, and Disposal Facilities	0
Water Dischargers	4
Air Pollution	0
Brownfields	0
Toxic Release Inventory	0

Other community features within defined area:

Schools	0
Hospitals	0
Places of Worship	0

Other environmental data:

Air Non-attainment	No
Impaired Waters	Yes

Selected location contains American Indian Reservation Lands*	Yes
Selected location contains a "Justice40 (CEJST)" disadvantaged community	Yes
Selected location contains an EPA IRA disadvantaged community	Yes

Report for 5 miles Ring Centered at 35.346089,-107.948704
 Report produced September 20, 2024 using EJScreen Version 2.3

EJScreen Environmental and Socioeconomic Indicators Data

HEALTH INDICATORS

INDICATOR	VALUE	STATE AVERAGE	STATE PERCENTILE	US AVERAGE	US PERCENTILE
Low Life Expectancy	22%	19%	75	20%	74
Heart Disease	8.8	5.9	94	5.8	93
Asthma	14.8	11.2	95	10.3	99
Cancer	5.3	6.1	32	6.4	27
Persons with Disabilities	16.2%	17.1%	50	13.7%	70

CLIMATE INDICATORS

INDICATOR	VALUE	STATE AVERAGE	STATE PERCENTILE	US AVERAGE	US PERCENTILE
Flood Risk	16%	9%	85	12%	81
Wildfire Risk	29%	58%	35	14%	84

CRITICAL SERVICE GAPS

INDICATOR	VALUE	STATE AVERAGE	STATE PERCENTILE	US AVERAGE	US PERCENTILE
Broadband Internet	48%	20%	92	13%	98
Lack of Health Insurance	19%	10%	90	9%	91
Housing Burden	No	N/A	N/A	N/A	N/A
Transportation Access Burden	Yes	N/A	N/A	N/A	N/A
Food Desert	Yes	N/A	N/A	N/A	N/A

Report for 5 miles Ring Centered at 35.346089,-107.948704

Report produced September 20, 2024 using EJScreen Version 2.3

Location: User-specified point center at 35.346089, -107.948704
 Ring (buffer): 5-miles radius
 Description: Glen and Edith NM0102

Summary of ACS Estimates		2018 - 2022
Population		546
Population Density (per sq. mile)		8
People of Color Population		490
% People of Color Population		90%
Households		173
Housing Units		255
Housing Units Built Before 1950		10
Per Capita Income		26,171
Land Area (sq. miles) (Source: SF1)		70.66
% Land Area		100%
Water Area (sq. miles) (Source: SF1)		0.19
% Water Area		0%

	2018 - 2022 ACS Estimates	Percent	MOE (±)
Population by Race			
Total	546	100%	427
Population Reporting One Race	516	95%	876
White	72	13%	332
Black	0	0%	29
American Indian	442	81%	427
Asian	2	0%	62
Pacific Islander	0	0%	13
Some Other Race	0	0%	13
Population Reporting Two or More Races	30	5%	49
Total Hispanic Population	46	8%	250
Total Non-Hispanic Population	500		
White Alone	56	10%	256
Black Alone	0	0%	29
American Indian Alone	442	81%	428
Non-Hispanic Asian Alone	2	0%	62
Pacific Islander Alone	0	0%	13
Other Race Alone	0	0%	13
Two or More Races Alone	0	0%	13
Population by Sex			
Male	251	46%	368
Female	295	54%	160
Population by Age			
Age 0-4	30	5%	69
Age 0-17	156	29%	232
Age 18+	390	71%	351
Age 65+	99	18%	211

Data Note: Detail may not sum to totals due to rounding. Hispanic population can be of any race.

N/A means not available. **Source:** U.S. Census Bureau, American Community Survey (ACS) 2018 - 2022

Location: User-specified point center at 35.346089, -107.948704
 Ring (buffer): 5-miles radius
 Description: Glen and Edith NM0102

	2018 - 2022 ACS Estimates	Percent	MOE (±)
Population 25+ by Educational Attainment			
Total	342	100%	371
Less than 9th Grade	38	11%	111
9th - 12th Grade, No Diploma	48	14%	148
High School Graduate	140	41%	143
Some College, No Degree	65	19%	123
Associate Degree	6	2%	88
Bachelor's Degree or more	44	13%	257
Population Age 5+ Years by Ability to Speak English			
Total	516	100%	388
Speak only English	255	49%	374
Non-English at Home ¹⁺²⁺³⁺⁴	261	51%	266
¹ Speak English "very well"	242	47%	257
² Speak English "well"	10	2%	83
³ Speak English "not well"	6	1%	45
⁴ Speak English "not at all"	2	0%	45
³⁺⁴ Speak English "less than well"	8	2%	64
²⁺³⁺⁴ Speak English "less than very well"	18	4%	105
Limited English Speaking Households*			
Total	10	100%	74
Speak Spanish	3	27%	71
Speak Other Indo-European Languages	0	0%	13
Speak Asian-Pacific Island Languages	0	0%	13
Speak Other Languages	7	73%	13
Households by Household Income			
Household Income Base	173	100%	250
< \$15,000	48	28%	88
\$15,000 - \$25,000	14	8%	82
\$25,000 - \$50,000	53	30%	99
\$50,000 - \$75,000	28	16%	153
\$75,000 +	31	18%	248
Occupied Housing Units by Tenure			
Total	173	100%	250
Owner Occupied	163	94%	256
Renter Occupied	11	6%	70
Employed Population Age 16+ Years			
Total	428	100%	375
In Labor Force	204	48%	373
Civilian Unemployed in Labor Force	26	13%	55
Not In Labor Force	224	52%	240

Data Note: Detail may not sum to totals due to rounding. Hispanic population can be of anyrace.

N/A means not available. **Source:** U.S. Census Bureau, American Community Survey (ACS)

*Households in which no one 14 and over speaks English "very well" or speaks English only.

Location: User-specified point center at 35.346089, -107.948704

Ring (buffer): 5-miles radius

Description: Glen and Edith NM0102

	2018 - 2022 ACS Estimates	Percent	MOE (±)
Population by Language Spoken at Home*			
Total (persons age 5 and above)	669	100%	328
English	204	31%	133
Spanish	0	0%	13
French, Haitian, or Cajun	0	0%	13
German or other West Germanic	0	0%	13
Russian, Polish, or Other Slavic	0	0%	13
Other Indo-European	0	0%	13
Korean	0	0%	13
Chinese (including Mandarin, Cantonese)	0	0%	13
Vietnamese	0	0%	13
Tagalog (including Filipino)	0	0%	13
Other Asian and Pacific Island	0	0%	13
Arabic	0	0%	13
Other and Unspecified	465	69%	266
Total Non-English	465	69%	354

Data Note: Detail may not sum to totals due to rounding. Hispanic population can be of any race.
N/A means not available. **Source:** U.S. Census Bureau, American Community Survey (ACS) 2018 - 2022.
*Population by Language Spoken at Home is available at the census tract summary level and up.