



# EJScreen Community Report

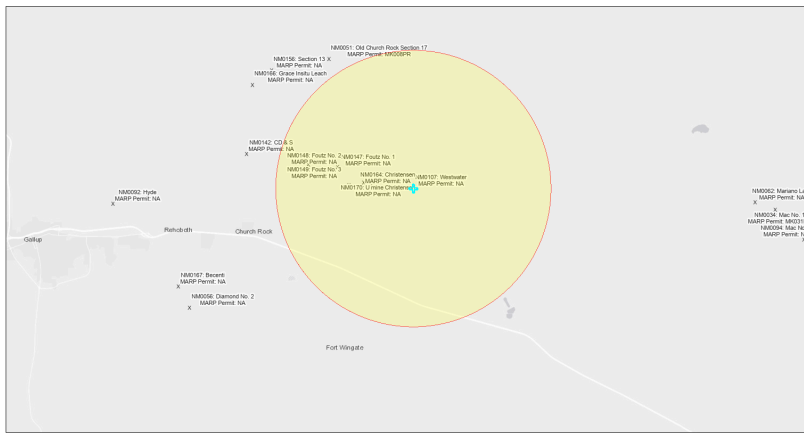
This report provides environmental and socioeconomic information for user-defined areas, and combines that data into environmental justice and supplemental indexes.

## Westwater NM0107

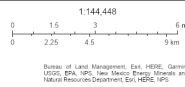
5 miles Ring Centered at 35.554320,-108.498270

Population: 2,406

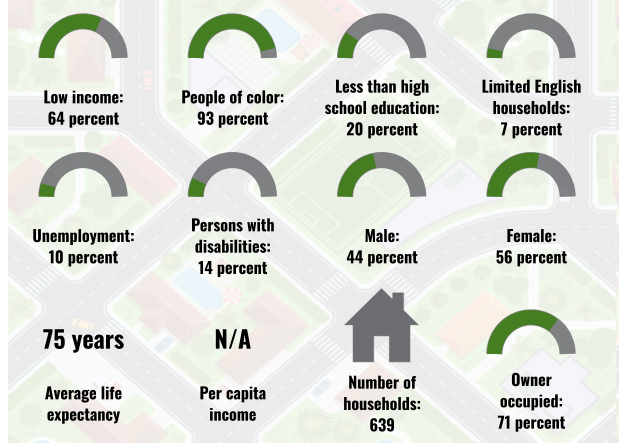
Area in square miles: 78.53



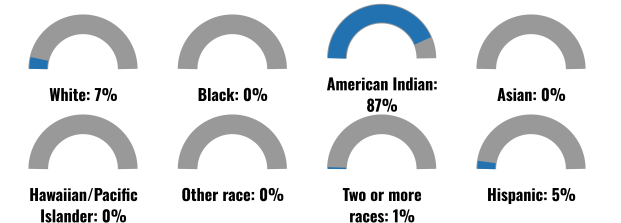
September 20, 2024  
Westwater NM0107  
\* Abandoned Uranium Mines



### COMMUNITY INFORMATION



### BREAKDOWN BY RACE



### BREAKDOWN BY AGE



### LIMITED ENGLISH SPEAKING BREAKDOWN



Notes: Numbers may not sum to totals due to rounding. Hispanic population can be of any race. Source: U.S. Census Bureau, American Community Survey (ACS) 2018-2022. Life expectancy data comes from the Centers for Disease Control.

### LANGUAGES SPOKEN AT HOME

LANGUAGE	PERCENT
English	44%
Other and Unspecified	56%
Total Non-English	56%

Report for 5 miles Ring Centered at 35.554320,-108.498270  
Report produced September 20, 2024 using EJScreen Version 2.3

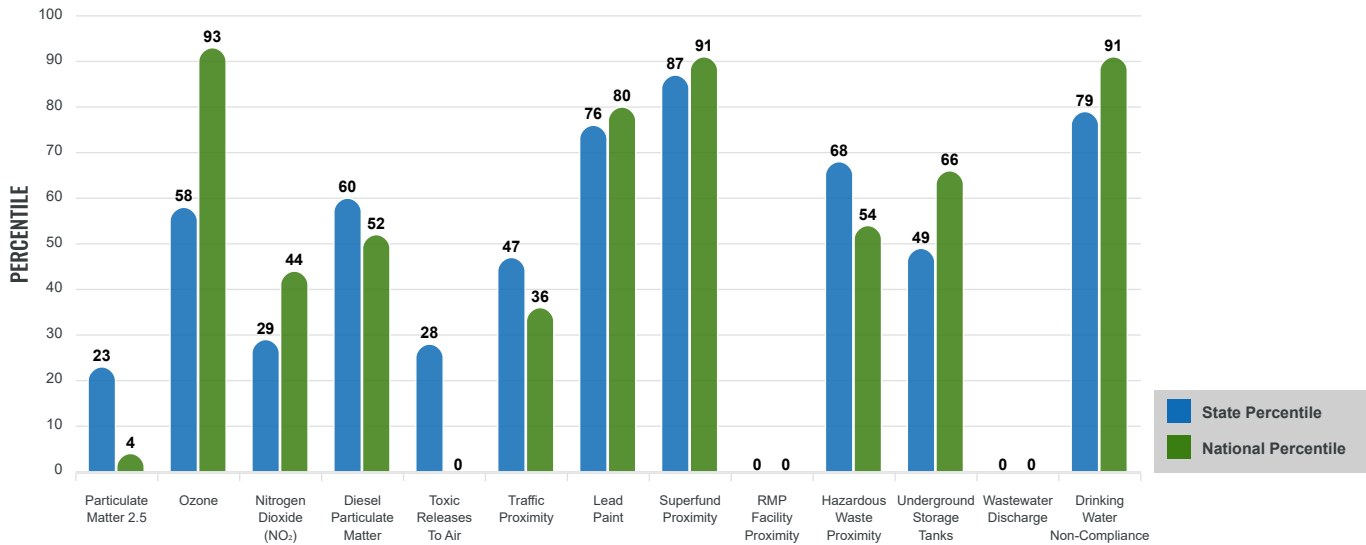
# Environmental Justice & Supplemental Indexes

The environmental justice and supplemental indexes are a combination of environmental and socioeconomic information. There are thirteen EJ indexes and supplemental indexes in EJScreen reflecting the 13 environmental indicators. The indexes for a selected area are compared to those for all other locations in the state or nation. For more information and calculation details on the EJ and supplemental indexes, please visit the [EJScreen website](#).

## EJ INDEXES

The EJ indexes help users screen for potential EJ concerns. To do this, the EJ index combines data on low income and people of color populations with a single environmental indicator.

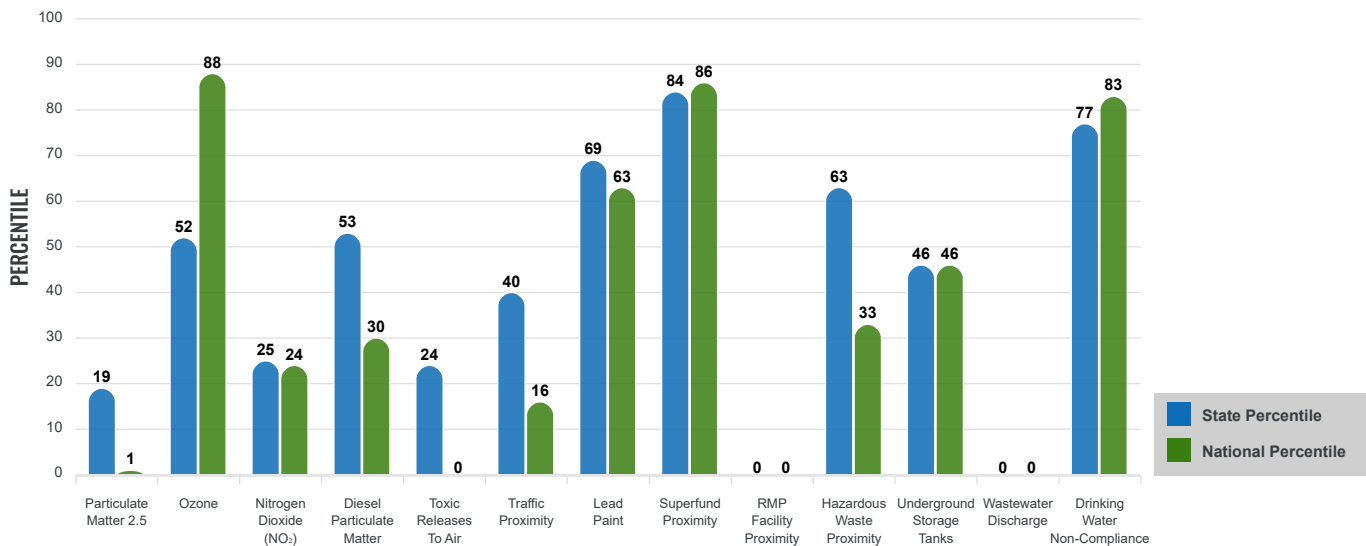
### EJ INDEXES FOR THE SELECTED LOCATION



## SUPPLEMENTAL INDEXES

The supplemental indexes offer a different perspective on community-level vulnerability. They combine data on percent low income, percent persons with disabilities, percent less than high school education, percent limited English speaking, and percent low life expectancy with a single environmental indicator.

### SUPPLEMENTAL INDEXES FOR THE SELECTED LOCATION



Report for 5 miles Ring Centered at 35.554320,-108.498270

Report produced September 20, 2024 using EJScreen Version 2.3

# EJScreen Environmental and Socioeconomic Indicators Data

SELECTED VARIABLES	VALUE	STATE AVERAGE	PERCENTILE IN STATE	USA AVERAGE	PERCENTILE IN USA
<b>ENVIRONMENTAL BURDEN INDICATORS</b>					
Particulate Matter 2.5 (µg/m <sup>3</sup> )	4.85	6.11	12	8.45	0
Ozone (ppb)	63.9	65.3	32	61.8	66
Nitrogen Dioxide (NO <sub>2</sub> ) (ppbv)	3.8	8.1	15	7.8	12
Diesel Particulate Matter (µg/m <sup>3</sup> )	0.0735	0.187	37	0.191	17
Toxic Releases to Air (toxicity-weighted concentration)	0	29	14	4,600	0
Traffic Proximity (daily traffic count/distance to road)	45,000	730,000	27	1,700,000	11
Lead Paint (% Pre-1960 Housing)	0.17	0.19	61	0.3	45
Superfund Proximity (site count/km distance)	0.12	0.34	68	0.39	62
RMP Facility Proximity (facility count/km distance)	0	0.2	0	0.57	0
Hazardous Waste Proximity (facility count/km distance)	0.12	1.2	41	3.5	19
Underground Storage Tanks (count/km <sup>2</sup> )	0.17	2.8	39	3.6	36
Wastewater Discharge (toxicity-weighted concentration/m distance)	0	990000	0	700000	0
Drinking Water Non-Compliance (points)	0.48	5.6	73	2.2	75
<b>SOCIOECONOMIC INDICATORS</b>					
Demographic Index USA	2.99	N/A	N/A	1.34	95
Supplemental Demographic Index USA	2.35	N/A	N/A	1.64	85
Demographic Index State	3.36	2.16	90	N/A	N/A
Supplemental Demographic Index State	2.1	1.62	77	N/A	N/A
People of Color	93%	62%	88	40%	91
Low Income	64%	39%	84	30%	91
Unemployment Rate	11%	6%	79	6%	84
Limited English Speaking Households	7%	6%	71	5%	80
Less Than High School Education	20%	14%	74	11%	81
Under Age 5	5%	5%	63	5%	58
Over Age 64	10%	20%	23	18%	26

\*Diesel particulate matter index is from the EPA's Air Toxics Data Update, which is the Agency's ongoing, comprehensive evaluation of air toxics in the United States. This effort aims to prioritize air toxics, emission sources, and locations of interest for further study. It is important to remember that the air toxics data presented here provide broad estimates of health risks over geographic areas of the country, not definitive risks to specific individuals or locations. More information on the Air Toxics Data Update can be found at: <https://www.epa.gov/haps/air-toxics-data-update>.

**Sites reporting to EPA within defined area:**

Superfund .....	0
Hazardous Waste, Treatment, Storage, and Disposal Facilities .....	0
Water Dischargers .....	7
Air Pollution .....	1
Brownfields .....	0
Toxic Release Inventory .....	0

**Other community features within defined area:**

Schools .....	0
Hospitals .....	0
Places of Worship .....	0

**Other environmental data:**

Air Non-attainment .....	No
Impaired Waters .....	Yes

- Selected location contains American Indian Reservation Lands\* ..... Yes
- Selected location contains a "Justice40 (CEJST)" disadvantaged community ..... Yes
- Selected location contains an EPA IRA disadvantaged community ..... Yes

Report for 5 miles Ring Centered at 35.554320,-108.498270  
 Report produced September 20, 2024 using EJScreen Version 2.3

## EJScreen Environmental and Socioeconomic Indicators Data

### HEALTH INDICATORS

INDICATOR	VALUE	STATE AVERAGE	STATE PERCENTILE	US AVERAGE	US PERCENTILE
Low Life Expectancy	23%	19%	83	20%	81
Heart Disease	9.4	5.9	97	5.8	96
Asthma	16.3	11.2	99	10.3	99
Cancer	5.2	6.1	27	6.4	25
Persons with Disabilities	14.1%	17.1%	37	13.7%	58

### CLIMATE INDICATORS

INDICATOR	VALUE	STATE AVERAGE	STATE PERCENTILE	US AVERAGE	US PERCENTILE
Flood Risk	14%	9%	80	12%	76
Wildfire Risk	4%	58%	30	14%	80

### CRITICAL SERVICE GAPS

INDICATOR	VALUE	STATE AVERAGE	STATE PERCENTILE	US AVERAGE	US PERCENTILE
Broadband Internet	51%	20%	92	13%	98
Lack of Health Insurance	19%	10%	89	9%	90
Housing Burden	No	N/A	N/A	N/A	N/A
Transportation Access Burden	Yes	N/A	N/A	N/A	N/A
Food Desert	Yes	N/A	N/A	N/A	N/A

Report for 5 miles Ring Centered at 35.554320,-108.498270

Report produced September 20, 2024 using EJScreen Version 2.3

Location: User-specified point center at 35.554320, -108.498270  
 Ring (buffer): 5-miles radius  
 Description: Wastewater NM0107

Summary of ACS Estimates		2018 - 2022
Population		2,406
Population Density (per sq. mile)		31
People of Color Population		2,249
% People of Color Population		93%
Households		639
Housing Units		815
Housing Units Built Before 1950		17
Per Capita Income		N/A
Land Area (sq. miles) (Source: SF1)		78.21
% Land Area		100%
Water Area (sq. miles) (Source: SF1)		0.00
% Water Area		0%

	2018 - 2022 ACS Estimates	Percent	MOE (±)
<b>Population by Race</b>			
Total	2,406	100%	275
Population Reporting One Race	2,379	99%	504
White	157	7%	123
Black	2	0%	13
American Indian	2,220	92%	277
Asian	0	0%	13
Pacific Islander	0	0%	13
Some Other Race	0	0%	65
Population Reporting Two or More Races	27	1%	121
Total Hispanic Population	129	5%	146
Total Non-Hispanic Population	2,277		
White Alone	157	7%	123
Black Alone	2	0%	13
American Indian Alone	2,093	87%	261
Non-Hispanic Asian Alone	0	0%	13
Pacific Islander Alone	0	0%	13
Other Race Alone	0	0%	15
Two or More Races Alone	25	1%	49
<b>Population by Sex</b>			
Male	1,068	44%	168
Female	1,338	56%	201
<b>Population by Age</b>			
Age 0-4	132	5%	87
Age 0-17	626	26%	110
Age 18+	1,780	74%	181
Age 65+	251	10%	107

**Data Note:** Detail may not sum to totals due to rounding. Hispanic population can be of any race.

N/A means not available. **Source:** U.S. Census Bureau, American Community Survey (ACS) 2018 - 2022

Location: User-specified point center at 35.554320, -108.498270

Ring (buffer): 5-miles radius

Description: Wastewater NM0107

	2018 - 2022 ACS Estimates	Percent	MOE (±)
<b>Population 25+ by Educational Attainment</b>			
Total	1,480	100%	186
Less than 9th Grade	122	8%	40
9th - 12th Grade, No Diploma	171	12%	73
High School Graduate	508	34%	90
Some College, No Degree	328	22%	74
Associate Degree	97	7%	45
Bachelor's Degree or more	254	17%	109
<b>Population Age 5+ Years by Ability to Speak English</b>			
Total	2,274	100%	238
Speak only English	1,060	47%	172
Non-English at Home <sup>1+2+3+4</sup>	1,214	53%	215
<sup>1</sup> Speak English "very well"	1,044	46%	215
<sup>2</sup> Speak English "well"	119	5%	72
<sup>3</sup> Speak English "not well"	39	2%	46
<sup>4</sup> Speak English "not at all"	12	1%	45
<sup>3+4</sup> Speak English "less than well"	51	2%	64
<sup>2+3+4</sup> Speak English "less than very well"	170	7%	96
<b>Limited English Speaking Households*</b>			
Total	44	100%	40
Speak Spanish	0	0%	13
Speak Other Indo-European Languages	0	0%	13
Speak Asian-Pacific Island Languages	0	0%	13
Speak Other Languages	44	100%	33
<b>Households by Household Income</b>			
Household Income Base	639	100%	92
< \$15,000	189	30%	70
\$15,000 - \$25,000	40	6%	23
\$25,000 - \$50,000	121	19%	56
\$50,000 - \$75,000	52	8%	57
\$75,000 +	237	37%	106
<b>Occupied Housing Units by Tenure</b>			
Total	639	100%	92
Owner Occupied	452	71%	70
Renter Occupied	186	29%	94
<b>Employed Population Age 16+ Years</b>			
Total	1,846	100%	229
In Labor Force	928	50%	157
Civilian Unemployed in Labor Force	88	10%	44
Not In Labor Force	918	50%	133

**Data Note:** Detail may not sum to totals due to rounding. Hispanic population can be of anyrace.

N/A means not available. **Source:** U.S. Census Bureau, American Community Survey (ACS)

\*Households in which no one 14 and over speaks English "very well" or speaks English only.

Location: User-specified point center at 35.554320, -108.498270

Ring (buffer): 5-miles radius

Description: Wastewater NM0107

	2018 - 2022 ACS Estimates	Percent	MOE (±)
<b>Population by Language Spoken at Home*</b>			
Total (persons age 5 and above)	3,763	100%	300
English	1,637	44%	257
Spanish	0	0%	13
French, Haitian, or Cajun	0	0%	13
German or other West Germanic	0	0%	13
Russian, Polish, or Other Slavic	0	0%	13
Other Indo-European	0	0%	13
Korean	0	0%	13
Chinese (including Mandarin, Cantonese)	0	0%	13
Vietnamese	0	0%	13
Tagalog (including Filipino)	0	0%	13
Other Asian and Pacific Island	0	0%	13
Arabic	0	0%	13
Other and Unspecified	2,126	56%	253
Total Non-English	2,126	56%	395

**Data Note:** Detail may not sum to totals due to rounding. Hispanic population can be of any race.  
 N/A means not available. **Source:** U.S. Census Bureau, American Community Survey (ACS) 2018 - 2022.  
 \*Population by Language Spoken at Home is available at the census tract summary level and up.