



# EJScreen Community Report

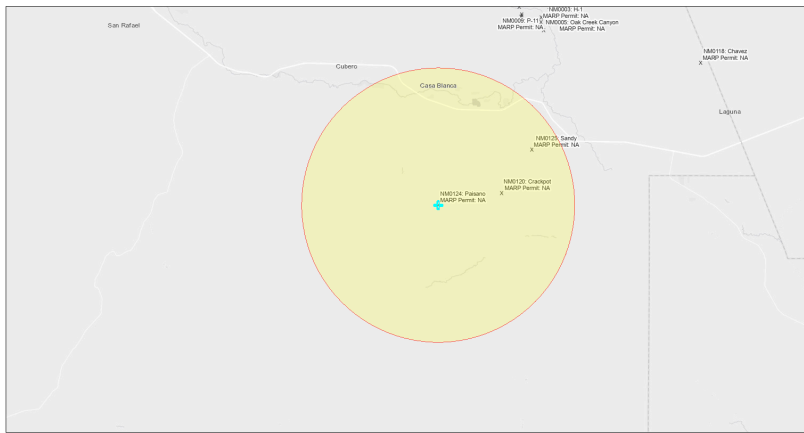
This report provides environmental and socioeconomic information for user-defined areas, and combines that data into environmental justice and supplemental indexes.

## Paisano NM0124

10 miles Ring Centered at 34.926236,-107.474951

Population: 3,020

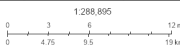
Area in square miles: 314.03



September 23, 2024

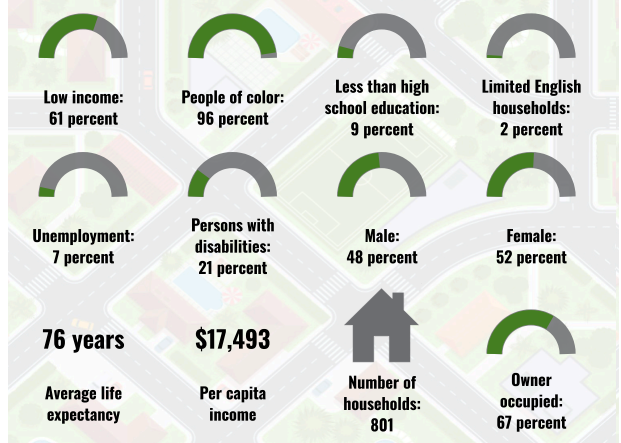
Paisano NM0124

\* Abandoned Uranium Mines

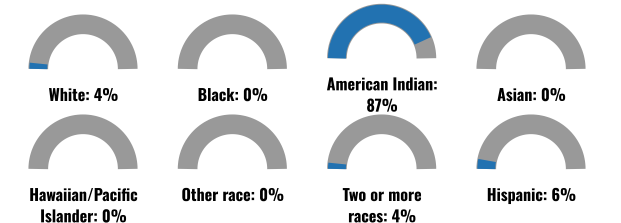


Bureau of Land Management, EPA, HHS, Census, USGS, EPA, USF, New Mexico Energy, Storage and Natural Resources Department, EPA, HHS, USF

### COMMUNITY INFORMATION



### BREAKDOWN BY RACE



### BREAKDOWN BY AGE



### LIMITED ENGLISH SPEAKING BREAKDOWN



### LANGUAGES SPOKEN AT HOME

LANGUAGE	PERCENT
English	50%
Spanish	2%
Other and Unspecified	48%
Total Non-English	50%

Notes: Numbers may not sum to totals due to rounding. Hispanic population can be of any race. Source: U.S. Census Bureau American Community Survey (ACS) 2018-2022. Life expectancy data comes from the Centers for Disease Control.

Report for 10 miles Ring Centered at 34.926236,-107.474951

Report produced September 23, 2024 using EJScreen Version 2.3

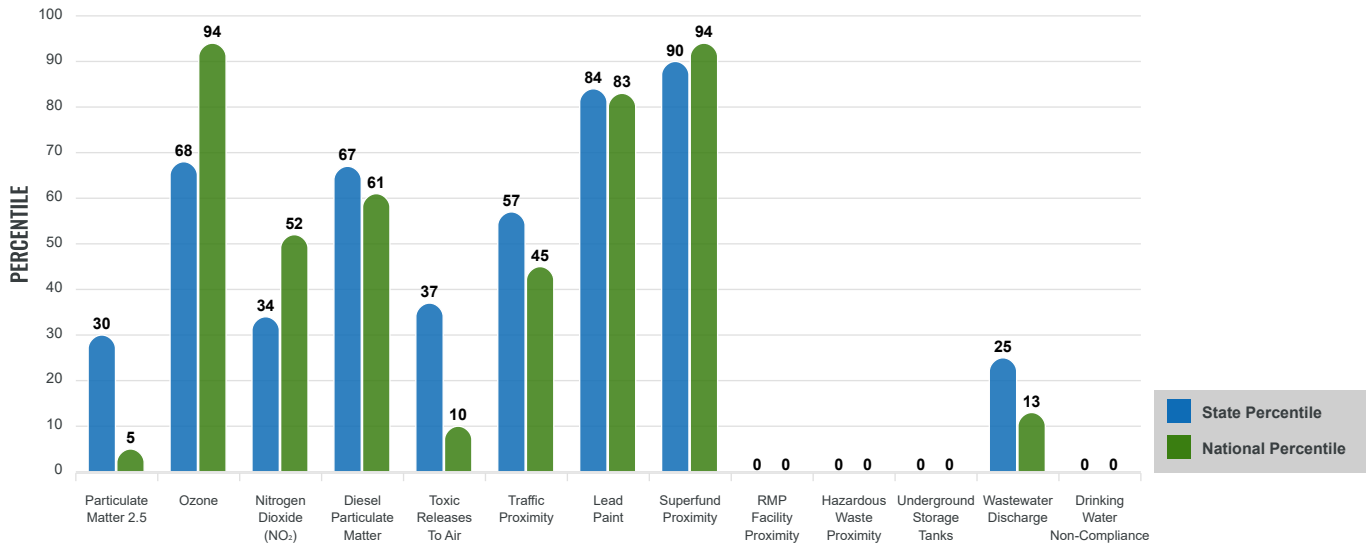
# Environmental Justice & Supplemental Indexes

The environmental justice and supplemental indexes are a combination of environmental and socioeconomic information. There are thirteen EJ indexes and supplemental indexes in EJScreen reflecting the 13 environmental indicators. The indexes for a selected area are compared to those for all other locations in the state or nation. For more information and calculation details on the EJ and supplemental indexes, please visit the [EJScreen website](#).

## EJ INDEXES

The EJ indexes help users screen for potential EJ concerns. To do this, the EJ index combines data on low income and people of color populations with a single environmental indicator.

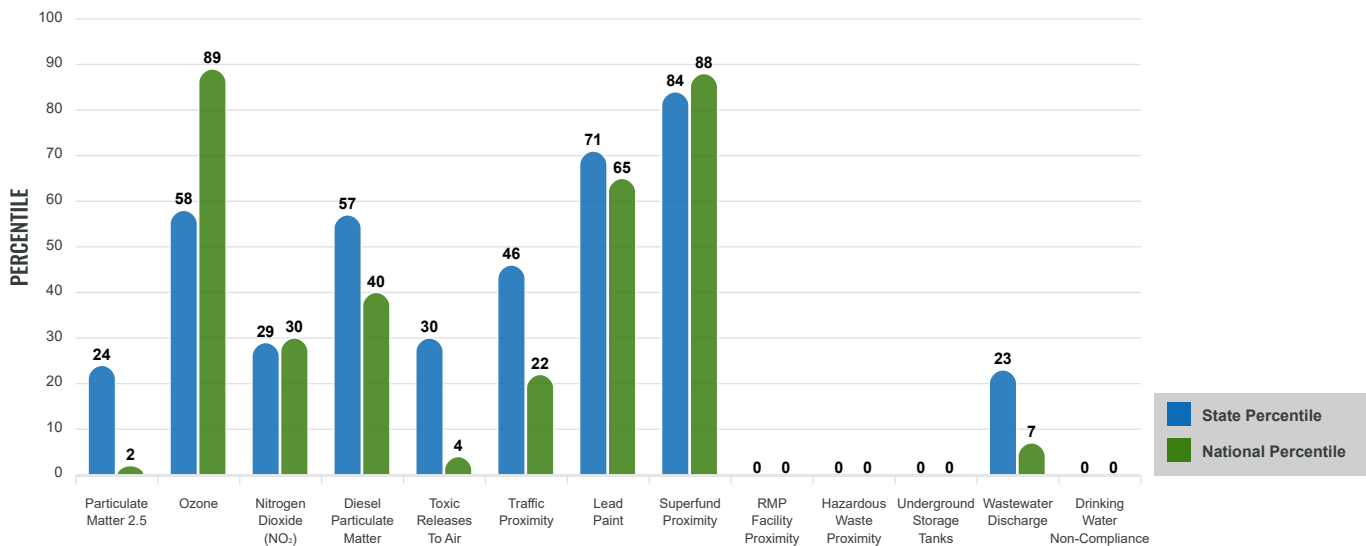
### EJ INDEXES FOR THE SELECTED LOCATION



## SUPPLEMENTAL INDEXES

The supplemental indexes offer a different perspective on community-level vulnerability. They combine data on percent low income, percent persons with disabilities, percent less than high school education, percent limited English speaking, and percent low life expectancy with a single environmental indicator.

### SUPPLEMENTAL INDEXES FOR THE SELECTED LOCATION



Report for 10 miles Ring Centered at 34.926236,-107.474951

Report produced September 23, 2024 using EJScreen Version 2.3

# EJScreen Environmental and Socioeconomic Indicators Data

SELECTED VARIABLES	VALUE	STATE AVERAGE	PERCENTILE IN STATE	USA AVERAGE	PERCENTILE IN USA
<b>ENVIRONMENTAL BURDEN INDICATORS</b>					
Particulate Matter 2.5 (µg/m <sup>3</sup> )	4.99	6.11	16	8.45	1
Ozone (ppb)	64.9	65.3	39	61.8	70
Nitrogen Dioxide (NO <sub>2</sub> ) (ppbv)	4.2	8.1	19	7.8	16
Diesel Particulate Matter (µg/m <sup>3</sup> )	0.0869	0.187	41	0.191	23
Toxic Releases to Air (toxicity-weighted concentration)	2.3	29	45	4,600	5
Traffic Proximity (daily traffic count/distance to road)	70,000	730,000	32	1,700,000	14
Lead Paint (% Pre-1960 Housing)	0.18	0.19	63	0.3	46
Superfund Proximity (site count/km distance)	0.57	0.34	88	0.39	85
RMP Facility Proximity (facility count/km distance)	0	0.2	0	0.57	0
Hazardous Waste Proximity (facility count/km distance)	0	1.2	0	3.5	0
Underground Storage Tanks (count/km <sup>2</sup> )	0	2.8	0	3.6	0
Wastewater Discharge (toxicity-weighted concentration/m distance)	0.00014	990000	24	700000	8
Drinking Water Non-Compliance (points)	0	5.6	0	2.2	0
<b>SOCIOECONOMIC INDICATORS</b>					
Demographic Index USA	2.97	N/A	N/A	1.34	94
Supplemental Demographic Index USA	2.24	N/A	N/A	1.64	82
Demographic Index State	3.35	2.16	90	N/A	N/A
Supplemental Demographic Index State	1.96	1.62	70	N/A	N/A
People of Color	96%	62%	92	40%	93
Low Income	61%	39%	80	30%	89
Unemployment Rate	7%	6%	65	6%	71
Limited English Speaking Households	2%	6%	53	5%	66
Less Than High School Education	9%	14%	46	11%	55
Under Age 5	5%	5%	58	5%	53
Over Age 64	13%	20%	34	18%	39

\*Diesel particulate matter index is from the EPA's Air Toxics Data Update, which is the Agency's ongoing, comprehensive evaluation of air toxics in the United States. This effort aims to prioritize air toxics, emission sources, and locations of interest for further study. It is important to remember that the air toxics data presented here provide broad estimates of health risks over geographic areas of the country, not definitive risks to specific individuals or locations. More information on the Air Toxics Data Update can be found at: <https://www.epa.gov/haps/air-toxics-data-update>.

**Sites reporting to EPA within defined area:**

Superfund .....	0
Hazardous Waste, Treatment, Storage, and Disposal Facilities .....	0
Water Dischargers .....	32
Air Pollution .....	0
Brownfields .....	1
Toxic Release Inventory .....	0

**Other community features within defined area:**

Schools .....	2
Hospitals .....	0
Places of Worship .....	5

**Other environmental data:**

Air Non-attainment .....	No
Impaired Waters .....	No

Selected location contains American Indian Reservation Lands* .....	Yes
Selected location contains a "Justice40 (CEJST)" disadvantaged community .....	Yes
Selected location contains an EPA IRA disadvantaged community .....	Yes

*Report for 10 miles Ring Centered at 34.926236,-107.474951  
Report produced September 23, 2024 using EJScreen Version 2.3*

## EJScreen Environmental and Socioeconomic Indicators Data

### HEALTH INDICATORS

INDICATOR	VALUE	STATE AVERAGE	STATE PERCENTILE	US AVERAGE	US PERCENTILE
Low Life Expectancy	23%	19%	79	20%	78
Heart Disease	8.5	5.9	93	5.8	92
Asthma	14.1	11.2	94	10.3	98
Cancer	6.5	6.1	62	6.4	49
Persons with Disabilities	21.3%	17.1%	76	13.7%	88

### CLIMATE INDICATORS

INDICATOR	VALUE	STATE AVERAGE	STATE PERCENTILE	US AVERAGE	US PERCENTILE
Flood Risk	15%	9%	83	12%	79
Wildfire Risk	28%	58%	35	14%	83

### CRITICAL SERVICE GAPS

INDICATOR	VALUE	STATE AVERAGE	STATE PERCENTILE	US AVERAGE	US PERCENTILE
Broadband Internet	50%	20%	92	13%	98
Lack of Health Insurance	17%	10%	87	9%	88
Housing Burden	No	N/A	N/A	N/A	N/A
Transportation Access Burden	Yes	N/A	N/A	N/A	N/A
Food Desert	Yes	N/A	N/A	N/A	N/A

Report for 10 miles Ring Centered at 34.926236,-107.474951

Report produced September 23, 2024 using EJScreen Version 2.3

Location: User-specified point center at 34.926236, -107.474951  
 Ring (buffer): 10-miles radius  
 Description: Paisano NM0124

Summary of ACS Estimates		2018 - 2022
Population		3,020
Population Density (per sq. mile)		10
People of Color Population		2,912
% People of Color Population		96%
Households		801
Housing Units		1,117
Housing Units Built Before 1950		202
Per Capita Income		17,493
Land Area (sq. miles) (Source: SF1)		317.13
% Land Area		100%
Water Area (sq. miles) (Source: SF1)		0.10
% Water Area		0%

	2018 - 2022 ACS Estimates	Percent	MOE (±)
<b>Population by Race</b>			
Total	3,020	100%	639
Population Reporting One Race	2,897	96%	911
White	121	4%	193
Black	2	0%	13
American Indian	2,772	92%	636
Asian	1	0%	13
Pacific Islander	1	0%	13
Some Other Race	1	0%	43
Population Reporting Two or More Races	123	4%	137
Total Hispanic Population	171	6%	210
Total Non-Hispanic Population	2,848		
White Alone	108	4%	78
Black Alone	2	0%	13
American Indian Alone	2,623	87%	627
Non-Hispanic Asian Alone	1	0%	13
Pacific Islander Alone	0	0%	13
Other Race Alone	0	0%	13
Two or More Races Alone	115	4%	134
<b>Population by Sex</b>			
Male	1,458	48%	387
Female	1,561	52%	342
<b>Population by Age</b>			
Age 0-4	150	5%	93
Age 0-17	855	28%	210
Age 18+	2,165	72%	321
Age 65+	407	13%	119

**Data Note:** Detail may not sum to totals due to rounding. Hispanic population can be of any race.

N/A means not available. **Source:** U.S. Census Bureau, American Community Survey (ACS) 2018 - 2022

Location: User-specified point center at 34.926236, -107.474951  
 Ring (buffer): 10-miles radius  
 Description: Paisano NM0124

	2018 - 2022 ACS Estimates	Percent	MOE (±)
<b>Population 25+ by Educational Attainment</b>			
Total	1,801	100%	401
Less than 9th Grade	31	2%	63
9th - 12th Grade, No Diploma	133	7%	107
High School Graduate	613	34%	212
Some College, No Degree	653	36%	186
Associate Degree	226	13%	123
Bachelor's Degree or more	144	8%	114
<b>Population Age 5+ Years by Ability to Speak English</b>			
Total	2,869	100%	627
Speak only English	1,587	55%	409
Non-English at Home <sup>1+2+3+4</sup>	1,282	45%	392
<sup>1</sup> Speak English "very well"	1,137	40%	381
<sup>2</sup> Speak English "well"	139	5%	97
<sup>3</sup> Speak English "not well"	6	0%	51
<sup>4</sup> Speak English "not at all"	0	0%	45
<sup>3+4</sup> Speak English "less than well"	6	0%	68
<sup>2+3+4</sup> Speak English "less than very well"	145	5%	115
<b>Limited English Speaking Households*</b>			
Total	19	100%	40
Speak Spanish	0	0%	13
Speak Other Indo-European Languages	0	0%	13
Speak Asian-Pacific Island Languages	2	11%	13
Speak Other Languages	17	89%	33
<b>Households by Household Income</b>			
Household Income Base	801	100%	149
< \$15,000	108	14%	80
\$15,000 - \$25,000	87	11%	70
\$25,000 - \$50,000	285	36%	95
\$50,000 - \$75,000	147	18%	66
\$75,000 +	174	22%	108
<b>Occupied Housing Units by Tenure</b>			
Total	801	100%	149
Owner Occupied	540	67%	132
Renter Occupied	261	33%	99
<b>Employed Population Age 16+ Years</b>			
Total	2,249	100%	500
In Labor Force	1,035	46%	307
Civilian Unemployed in Labor Force	72	7%	62
Not In Labor Force	1,213	54%	295

**Data Note:** Detail may not sum to totals due to rounding. Hispanic population can be of anyrace.

N/A means not available. **Source:** U.S. Census Bureau, American Community Survey (ACS)

\*Households in which no one 14 and over speaks English "very well" or speaks English only.

Location: User-specified point center at 34.926236, -107.474951

Ring (buffer): 10-miles radius

Description: Paisano NM0124

	2018 - 2022 ACS Estimates	Percent	MOE (±)
<b>Population by Language Spoken at Home*</b>			
Total (persons age 5 and above)	4,120	100%	678
English	2,042	50%	639
Spanish	89	2%	88
French, Haitian, or Cajun	12	0%	65
German or other West Germanic	0	0%	13
Russian, Polish, or Other Slavic	0	0%	13
Other Indo-European	0	0%	13
Korean	0	0%	13
Chinese (including Mandarin, Cantonese)	0	0%	13
Vietnamese	0	0%	13
Tagalog (including Filipino)	0	0%	13
Other Asian and Pacific Island	9	0%	13
Arabic	0	0%	13
Other and Unspecified	1,968	48%	662
Total Non-English	2,078	50%	932

**Data Note:** Detail may not sum to totals due to rounding. Hispanic population can be of any race.  
N/A means not available. **Source:** U.S. Census Bureau, American Community Survey (ACS) 2018 - 2022.  
\*Population by Language Spoken at Home is available at the census tract summary level and up.