



EJScreen Community Report

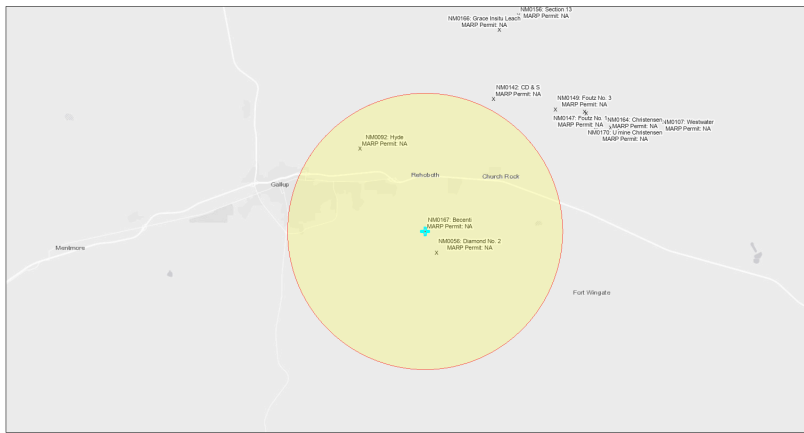
This report provides environmental and socioeconomic information for user-defined areas, and combines that data into environmental justice and supplemental indexes.

Becenti NM0167

5 miles Ring Centered at 35.502933,-108.649942

Population: 13,452

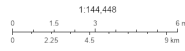
Area in square miles: 78.53



September 24, 2024

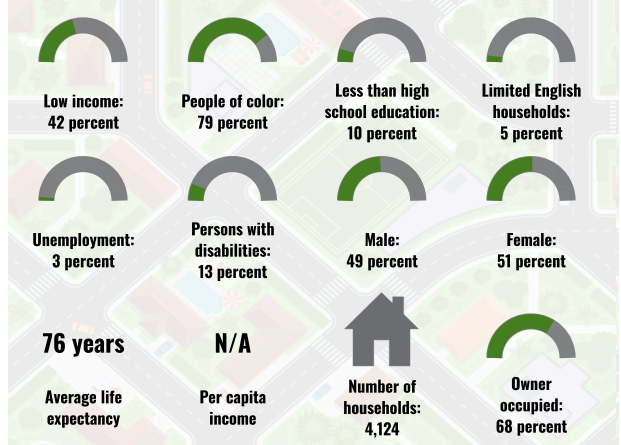
Becenti NM0167

* Abandoned Uranium Mines

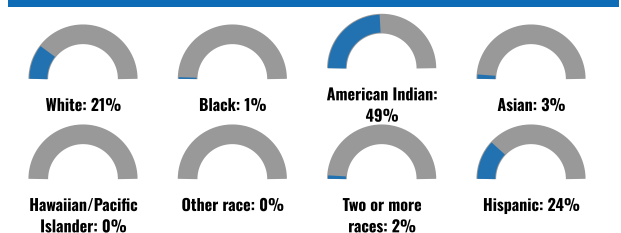


1:144,448
Bureau of Land Management, EPA, HERS, Gemini, USGS, BIA, IHS, New Mexico Energy, Storage and Natural Resources Department, ERI, HERS, IHS

COMMUNITY INFORMATION



BREAKDOWN BY RACE



BREAKDOWN BY AGE



LIMITED ENGLISH SPEAKING BREAKDOWN



Notes: Numbers may not sum to totals due to rounding. Hispanic population can be of any race. Source: U.S. Census Bureau American Community Survey (ACS) 2018-2022. Life expectancy data comes from the Centers for Disease Control.

LANGUAGES SPOKEN AT HOME

LANGUAGE	PERCENT
English	66%
Spanish	8%
Tagalog (including Filipino)	3%
Arabic	1%
Other and Unspecified	22%
Total Non-English	34%

Report for 5 miles Ring Centered at 35.502933,-108.649942

Report produced September 24, 2024 using EJScreen Version 2.3

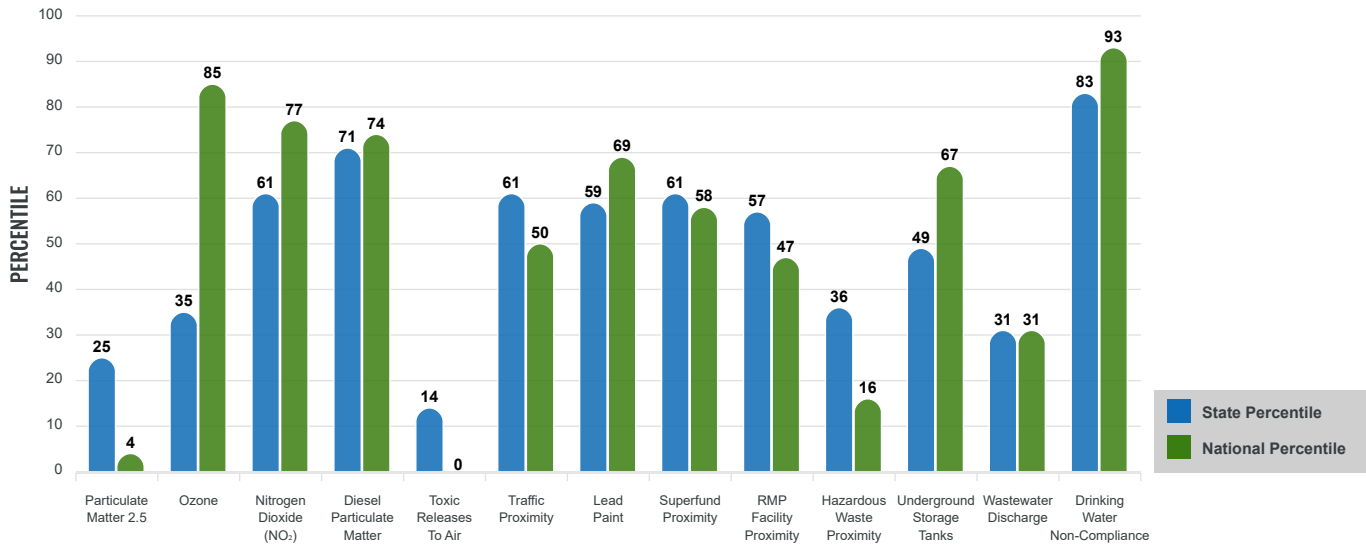
Environmental Justice & Supplemental Indexes

The environmental justice and supplemental indexes are a combination of environmental and socioeconomic information. There are thirteen EJ indexes and supplemental indexes in EJScreen reflecting the 13 environmental indicators. The indexes for a selected area are compared to those for all other locations in the state or nation. For more information and calculation details on the EJ and supplemental indexes, please visit the [EJScreen website](#).

EJ INDEXES

The EJ indexes help users screen for potential EJ concerns. To do this, the EJ index combines data on low income and people of color populations with a single environmental indicator.

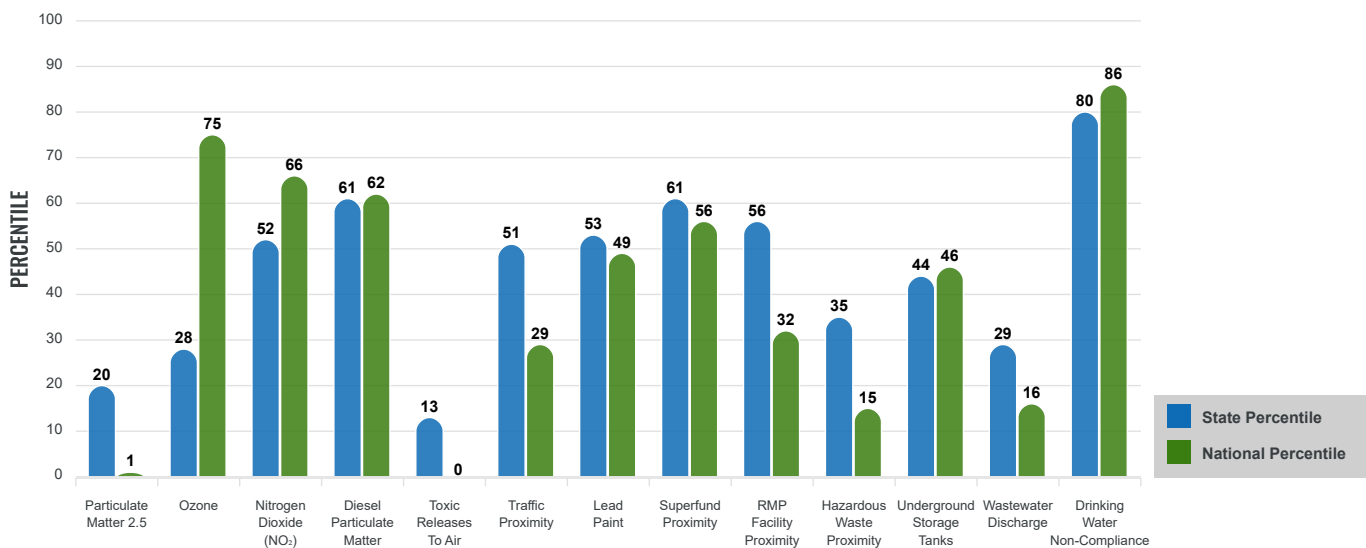
EJ INDEXES FOR THE SELECTED LOCATION



SUPPLEMENTAL INDEXES

The supplemental indexes offer a different perspective on community-level vulnerability. They combine data on percent low income, percent persons with disabilities, percent less than high school education, percent limited English speaking, and percent low life expectancy with a single environmental indicator.

SUPPLEMENTAL INDEXES FOR THE SELECTED LOCATION



Report for 5 miles Ring Centered at 35.502933,-108.649942

Report produced September 24, 2024 using EJScreen Version 2.3

EJScreen Environmental and Socioeconomic Indicators Data

SELECTED VARIABLES	VALUE	STATE AVERAGE	PERCENTILE IN STATE	USA AVERAGE	PERCENTILE IN USA
ENVIRONMENTAL BURDEN INDICATORS					
Particulate Matter 2.5 (µg/m ³)	5.02	6.11	17	8.45	1
Ozone (ppb)	63.3	65.3	25	61.8	64
Nitrogen Dioxide (NO ₂) (ppbv)	8.1	8.1	44	7.8	55
Diesel Particulate Matter (µg/m ³)	0.154	0.187	61	0.191	49
Toxic Releases to Air (toxicity-weighted concentration)	0	29	13	4,600	0
Traffic Proximity (daily traffic count/distance to road)	170,000	730,000	46	1,700,000	23
Lead Paint (% Pre-1960 Housing)	0.17	0.19	61	0.3	44
Superfund Proximity (site count/km distance)	0.012	0.34	61	0.39	56
RMP Facility Proximity (facility count/km distance)	0.061	0.2	54	0.57	28
Hazardous Waste Proximity (facility count/km distance)	0.0039	1.2	35	3.5	15
Underground Storage Tanks (count/km ²)	0.94	2.8	54	3.6	51
Wastewater Discharge (toxicity-weighted concentration/m distance)	0.67	990000	41	700000	20
Drinking Water Non-Compliance (points)	0.91	5.6	74	2.2	77
SOCIOECONOMIC INDICATORS					
Demographic Index USA	2.24	N/A	N/A	1.34	83
Supplemental Demographic Index USA	1.76	N/A	N/A	1.64	62
Demographic Index State	2.57	2.16	65	N/A	N/A
Supplemental Demographic Index State	1.52	1.62	47	N/A	N/A
People of Color	79%	62%	72	40%	82
Low Income	42%	39%	55	30%	73
Unemployment Rate	3%	6%	39	6%	41
Limited English Speaking Households	5%	6%	64	5%	74
Less Than High School Education	10%	14%	48	11%	58
Under Age 5	6%	5%	68	5%	64
Over Age 64	14%	20%	38	18%	43

*Diesel particulate matter index is from the EPA's Air Toxics Data Update, which is the Agency's ongoing, comprehensive evaluation of air toxics in the United States. This effort aims to prioritize air toxics, emission sources, and locations of interest for further study. It is important to remember that the air toxics data presented here provide broad estimates of health risks over geographic areas of the country, not definitive risks to specific individuals or locations. More information on the Air Toxics Data Update can be found at: <https://www.epa.gov/haps/air-toxics-data-update>.

Sites reporting to EPA within defined area:

Superfund	0
Hazardous Waste, Treatment, Storage, and Disposal Facilities	0
Water Dischargers	80
Air Pollution	15
Brownfields	4
Toxic Release Inventory	0

Other community features within defined area:

Schools	9
Hospitals	2
Places of Worship	2

Other environmental data:

Air Non-attainment	No
Impaired Waters	Yes

Selected location contains American Indian Reservation Lands* Yes
 Selected location contains a "Justice40 (CEJST)" disadvantaged community Yes
 Selected location contains an EPA IRA disadvantaged community Yes

Report for 5 miles Ring Centered at 35.502933,-108.649942
 Report produced September 24, 2024 using EJScreen Version 2.3

EJScreen Environmental and Socioeconomic Indicators Data

HEALTH INDICATORS

INDICATOR	VALUE	STATE AVERAGE	STATE PERCENTILE	US AVERAGE	US PERCENTILE
Low Life Expectancy	21%	19%	65	20%	64
Heart Disease	6.5	5.9	65	5.8	66
Asthma	12.5	11.2	88	10.3	92
Cancer	5.7	6.1	45	6.4	34
Persons with Disabilities	12.5%	17.1%	26	13.7%	48

CLIMATE INDICATORS

INDICATOR	VALUE	STATE AVERAGE	STATE PERCENTILE	US AVERAGE	US PERCENTILE
Flood Risk	10%	9%	66	12%	64
Wildfire Risk	0%	58%	28	14%	78

CRITICAL SERVICE GAPS

INDICATOR	VALUE	STATE AVERAGE	STATE PERCENTILE	US AVERAGE	US PERCENTILE
Broadband Internet	26%	20%	70	13%	87
Lack of Health Insurance	18%	10%	87	9%	89
Housing Burden	No	N/A	N/A	N/A	N/A
Transportation Access Burden	Yes	N/A	N/A	N/A	N/A
Food Desert	Yes	N/A	N/A	N/A	N/A

Report for 5 miles Ring Centered at 35.502933,-108.649942

Report produced September 24, 2024 using EJScreen Version 2.3

Location: User-specified point center at 35.502933, -108.649942
 Ring (buffer): 5-miles radius
 Description: Becenti NM0167

Summary of ACS Estimates		2018 - 2022
Population		13,452
Population Density (per sq. mile)		165
People of Color Population		10,630
% People of Color Population		79%
Households		4,124
Housing Units		4,524
Housing Units Built Before 1950		263
Per Capita Income		N/A
Land Area (sq. miles) (Source: SF1)		81.70
% Land Area		100%
Water Area (sq. miles) (Source: SF1)		0.04
% Water Area		0%

	2018 - 2022 ACS Estimates	Percent	MOE (±)
Population by Race			
Total	13,452	100%	557
Population Reporting One Race	12,508	93%	1,407
White	3,382	25%	264
Black	123	1%	42
American Indian	7,339	55%	603
Asian	408	3%	151
Pacific Islander	27	0%	26
Some Other Race	1,229	9%	321
Population Reporting Two or More Races	944	7%	276
Total Hispanic Population	3,212	24%	475
Total Non-Hispanic Population	10,240		
White Alone	2,822	21%	270
Black Alone	123	1%	42
American Indian Alone	6,618	49%	524
Non-Hispanic Asian Alone	405	3%	154
Pacific Islander Alone	27	0%	26
Other Race Alone	20	0%	28
Two or More Races Alone	225	2%	200
Population by Sex			
Male	6,629	49%	389
Female	6,823	51%	344
Population by Age			
Age 0-4	831	6%	105
Age 0-17	3,682	27%	366
Age 18+	9,770	73%	283
Age 65+	1,925	14%	155

Data Note: Detail may not sum to totals due to rounding. Hispanic population can be of any race.

N/A means not available. **Source:** U.S. Census Bureau, American Community Survey (ACS) 2018 - 2022

Location: User-specified point center at 35.502933, -108.649942

Ring (buffer): 5-miles radius

Description: Becenti NM0167

	2018 - 2022 ACS Estimates	Percent	MOE (±)
Population 25+ by Educational Attainment			
Total	8,679	100%	334
Less than 9th Grade	176	2%	79
9th - 12th Grade, No Diploma	671	8%	147
High School Graduate	2,684	31%	203
Some College, No Degree	2,282	26%	226
Associate Degree	908	10%	116
Bachelor's Degree or more	1,959	23%	157
Population Age 5+ Years by Ability to Speak English			
Total	12,621	100%	540
Speak only English	8,143	65%	436
Non-English at Home ¹⁺²⁺³⁺⁴	4,478	35%	307
¹ Speak English "very well"	3,421	27%	247
² Speak English "well"	750	6%	155
³ Speak English "not well"	274	2%	152
⁴ Speak English "not at all"	32	0%	52
³⁺⁴ Speak English "less than well"	307	2%	159
²⁺³⁺⁴ Speak English "less than very well"	1,056	8%	177
Limited English Speaking Households*			
Total	195	100%	88
Speak Spanish	88	45%	83
Speak Other Indo-European Languages	0	0%	13
Speak Asian-Pacific Island Languages	17	9%	24
Speak Other Languages	90	46%	58
Households by Household Income			
Household Income Base	4,124	100%	136
< \$15,000	636	15%	136
\$15,000 - \$25,000	280	7%	95
\$25,000 - \$50,000	742	18%	81
\$50,000 - \$75,000	560	14%	108
\$75,000 +	1,905	46%	139
Occupied Housing Units by Tenure			
Total	4,124	100%	136
Owner Occupied	2,813	68%	140
Renter Occupied	1,312	32%	124
Employed Population Age 16+ Years			
Total	10,100	100%	439
In Labor Force	5,560	55%	285
Civilian Unemployed in Labor Force	150	3%	85
Not In Labor Force	4,540	45%	334

Data Note: Detail may not sum to totals due to rounding. Hispanic population can be of anyrace.

N/A means not available. **Source:** U.S. Census Bureau, American Community Survey (ACS)

*Households in which no one 14 and over speaks English "very well" or speaks English only.

Location: User-specified point center at 35.502933, -108.649942

Ring (buffer): 5-miles radius

Description: Becenti NM0167

	2018 - 2022 ACS Estimates	Percent	MOE (±)
Population by Language Spoken at Home*			
Total (persons age 5 and above)	11,150	100%	604
English	7,320	66%	657
Spanish	920	8%	403
French, Haitian, or Cajun	3	0%	13
German or other West Germanic	24	0%	31
Russian, Polish, or Other Slavic	11	0%	18
Other Indo-European	4	0%	13
Korean	0	0%	13
Chinese (including Mandarin, Cantonese)	0	0%	13
Vietnamese	13	0%	23
Tagalog (including Filipino)	320	3%	150
Other Asian and Pacific Island	5	0%	17
Arabic	62	1%	112
Other and Unspecified	2,468	22%	335
Total Non-English	3,830	34%	892

Data Note: Detail may not sum to totals due to rounding. Hispanic population can be of any race.
 N/A means not available. **Source:** U.S. Census Bureau, American Community Survey (ACS) 2018 - 2022.
 *Population by Language Spoken at Home is available at the census tract summary level and up.