



NEW MEXICO ENVIRONMENT DEPARTMENT
GROUND WATER QUALITY BUREAU
PUBLIC INVOLVEMENT PLAN
(PIP)



Facility Name: Johnny's Septage Disposal Facility

Facility Location: County Road B-059
Mesquite, NM
Section 21, Township 24S, Range 03E

County: Doña Ana

Responsible Party: Johnny's Septic Tank Company, Inc.
Danny Suggs, Owner
2155 Doña Ana Road
Las Cruces, New Mexico 88007

Agency: Ground Water Quality Bureau
Pollution Prevention Section

GWQB Action: Permitting - Renewal
DP-1762

Bureau Contact: Gerald Knutson, Water Resources Professional III
(505) 660-7189
gerald.knutson@env.nm.gov
or pps.general@env.nm.gov

Main bureau telephone number:
(505) 827-2900

EFFECTIVE DATE: July 16, 2019

REVISION DATE: August 11, 2023

/s/ Jason Herman for

Justin D. Ball, Chief
Ground Water Quality Bureau

Element 1 – Public Involvement Plan (PIP) Overview

The New Mexico Environment Department (NMED or Department), Ground Water Quality Bureau (Bureau) has developed this PIP for the application for renewal of the Ground Water Discharge Permit for Johnny’s Septage Disposal Facility. The permit for this facility is referred to as DP-1762.

The purpose of this PIP is to plan for providing public participation opportunities and information that may be needed for the community to participate in the permitting process for this facility. This PIP identifies information about the community and resources needed by the Bureau to incorporate community participation activities into the decision-making process. This PIP is developed in accordance with the Department’s *Public Participation Policy* (Policy 07-13 or Policy), and incorporates the requirements of the Policy, as well as applicable regulatory and statutory public participation requirements.

This PIP implements the “elements” set forth in the Policy. Those elements include:

1. An overview of the Public Involvement Plan for the community affected by the activity
2. Bureau contact names and contact information, specifically for Limited English Proficiency (LEP) language assistance services (e.g., translation, interpreters) or for disability accommodations
3. A summary of the regulatory public participation framework associated with discharge permits
4. A description of community/stakeholder groups based on results of a preliminary environmental justice (EJ) screening
5. Details about planned public outreach activities

In developing this PIP, community participation needs were assessed to ensure appropriate public outreach. This was accomplished by identifying whether there is a combination of environmental and demographic factors that may impact public participation (e.g., low-income community, minority community, LEP individuals, linguistically isolated households). Because the community located near Johnny’s Septage Disposal Facility includes a significant percentage of Spanish speakers, the Bureau will provide appropriate information in both English and Spanish.

Public involvement associated with discharge permits occurs at different stages and in different forms. Public involvement activities required by statute or regulation are mandatory and subject to statutory or regulatory deadlines. Mandatory public involvement activities and associated time requirements relevant to this PIP are noted in the *Table of Mandated Public Involvement Activities* at the end of this PIP.

The Bureau plans to conduct the public involvement activities related to the permitting process outlined in the *Table of Public Involvement Activities* below. The activity timeline and dates are tentative and subject to change.

Table of Public Involvement Activities

Activity	Date
<p>Application Notice (PN-1) See <i>Table of Mandated Public Involvement Activities</i> at the end of this PIP for details.</p>	<p>July 2023</p>
<p>Placement of a hardcopy of the PIP in the local NMED office: NMED District III Office 2301 Entrada Del Sol Las Cruces, New Mexico 88001 (575) 288-2050</p>	<p>August 2023</p>
<p>Notice of availability of draft permit (PN-2) See <i>Table of Mandated Public Involvement Activities</i>.</p>	<p>Within 60 days of determining the application is technically complete. Date to be determined</p>

All notices for upcoming meetings or hearings will include a statement that any person who requires assistance, an interpreter, or an auxiliary aid to participate in the process may contact a specifically identified Department person to request those services. Requested interpretation services during the meeting and accommodations or services for persons with disabilities will be arranged to the extent possible.

This PIP is a “living” document that may be amended for numerous reasons, including the consideration of public comments and feedback.

Element 2 – Bureau Contact Information

PIP Specific Contacts

The Bureau contact for this discharge permit is:

Gerald Knutson, Water Resources Professional III
 NMED Ground Water Quality Bureau
 P.O. Box 5469, Santa Fe, NM 87502-5469
 (505) 660-7189 / gerald.knutson@env.nm.gov / pps.general@env.nm.gov

Non-English Language Speaker Assistance

All public notices will contain a statement that non-English speakers may call the Bureau contact listed above and request language assistance in order to learn more about this permit or the

permitting process. Arrangements may be made for document translation or interpretation related to the permitting process as necessary and as resources allow.

Individuals with Disabilities Assistance

All public notices will contain a statement that individuals with disabilities may call the Bureau contact listed above and request assistance needed to participate in activities associated with the permitting process.

The following information will be provided in public notices so that individuals who are deaf, hard of hearing, or have difficulty speaking on the phone can contact the Bureau and ask questions about the activity or proceeding: Telephone conversation assistance is available through Relay New Mexico at no charge for people who are deaf, hard of hearing, or have difficulty speaking on the phone, by calling 1-800-659-1779 (English); 1-800-327-1857 (Spanish); TTY users: 1-800-659-8331.

Websites

Outreach materials and notices will include links to the following website, where the Bureau's public notices and PIP information are posted:

Ground Water Quality Bureau –<https://www.env.nm.gov/public-notices/>

Element 3 – Regulatory Framework for Public Participation Related to the Permitting Process

The public participation regulatory framework associated with the permitting process is identified in the *Table of Mandated Public Involvement Activities* at the end of this PIP. The Table identifies activities subject to statutory or regulatory deadlines, the associated regulatory requirements, and the associated dates or time periods.

Element 4 – Description of Community/Stakeholder Groups Based on the EJSCREEN

EJSCREEN Summary

To provide for adequate public participation opportunities and meaningful involvement of persons in the permitting process, the affected communities must first be identified, informed about proposed environmental actions affecting the community, and invited to share their comments and concerns. The EJSCREEN tool developed by the U.S. Environmental Protection Agency (EPA) helps identify communities that are low income, have minority populations, and have limited English proficiency that may benefit from a variety of approaches for notification and outreach communication. This information is used to help plan for the community's involvement in the public process for environmental activities or actions. In addition to the EJSCREEN results,

the Bureau may consider additional information such as the U.S. Census Bureau website or NMED’s EJ Mapping Tool.

The Bureau considers the affected community to be those persons living within a 4-mile radius of the discharge site. The results of the EJSCREEN Community Report (attached to this PIP) are summarized in the table below.

EJSCREEN Results for the Affected Community

Total population	1,746
Total number of households	710
Percentage People of Color population	88%
Percentage Hispanic population	87%
Percentage of the population by race	Population reporting one race: White: 37% Black: 0% American Indian: 0% Asian: 0% Pacific Islander: 0% Some Other Race: 29%
Percentage of Total Non-English Languages Spoken at Home	79%
Percentage of Limited English households	13%
Languages by percentage in Limited English-Speaking Breakdown	Spanish:89% Other Indo-European languages:0% Asian-Pacific Island languages:0% Other languages: 11%
Percent linguistically isolated population, New Mexico*:	5.1%
Per capita income	\$24,940
Per capita income, USA**	\$35,384

* U.S. Census Bureau. 2020 American Community Survey 5-Year Estimates, Table S1602. Limited English-Speaking Households.

<https://data.census.gov/cedsci/table?q=S1602%3A%20LIMITED%20ENGLISH%20SPEAKING%20HOUSEHOLDS&g=0400000US35&tid=ACSST5Y2020.S1602> (date of access: 5/4/2022).

** U.S. Census Bureau. 2020 American Community Survey 5-Year Estimates, Table B19301. Per Capita Income in the Past 12 Months (In 2020 Inflation-Adjusted Dollars).

<https://data.census.gov/cedsci/table?q=per%20capita%20income&tid=ACSDT5Y2020.B19301>. (Date of access: 5/4/2022).

The EJSscreen results indicate that for the affected community the proportion of the population with limited English proficiency (LEP) is significant, and that the predominant non-English language is Spanish. The Bureau has therefore performed a LEP assessment for the community and attaches that assessment to this PIP.

Because the affected community has a significant percentage of persons with difficulties communicating in English, the Bureau will consider the language and communication needs of this community when conducting public outreach and participation activities. To accomplish this the Bureau, to the extent its budget and time limitations allow, will provide the same information in Spanish as in English in public comment notices, public meeting notices, and other announcements (e.g., radio broadcasts, brochures, signs, postcards) and will strive to make public participation efforts as inclusive as possible. See Element 5 for more specifics on the public outreach and participation activities.

Element 5 – Detailed Actions and Outreach Activities with the Affected Public

Public involvement activities required by statute or regulation for this permitting action are listed in the *Table of Mandated Public Involvement Activities* at the end of this document.

Public Participation – Outreach Activities

The Bureau will conduct the following outreach activities during this permitting process:

- Placement of this PIP on the Bureau website and in nearby NMED field office
- Postal mailing and email notices
- Newspaper notices
- Notice posted on NMED website

Newspapers to be utilized in the notification process include:

- Statewide circulation (English): Albuquerque Journal
- Local circulation (English and Spanish): Las Cruces Sun News – Doña Ana County

Local, state, and federal government agencies, tribal entities, land grant officials and colonias will be notified about the permitting process. A list of the agencies and officials notified can be provided upon request.

Indian Tribes, Pueblos and Nations will be notified about the permitting action through the contacts maintained by the Indian Affairs Department at the following URLs:

- <https://www.iad.state.nm.us/pueblo-tribes-and-nations/pueblos/>
- <https://www.iad.state.nm.us/pueblo-tribes-and-nations/navajo/>
- <https://www.iad.state.nm.us/pueblo-tribes-and-nations/apaches/>

Timelines and methods for submitting public comments are specified in the *Table of Mandated Public Involvement Activities*. Final discharge permit documents will be available from the Bureau's contact identified in Element 2 of this PIP.

Postal Mailing or E-Mailing of Notices to Persons on the Facility-Specific Mailing List

The Bureau solicits the names and contact information of interested parties with all public notices. The Bureau maintains those names on a Facility-Specific Mailing List and provides the individuals with information about regulatory activities for the facility. Individuals, organizations, and other interested parties are added to the mailing list as requested. All public notices will contain a statement directing interested individuals to contact the Bureau contact for this permit if they want to be added to the facility specific mailing list.

Other means of outreach such as fliers announcing public comment periods and/or public meetings or hearings may be posted in locations throughout the community (e.g., local businesses, schools, libraries) and on the Department's website, at the Bureau's discretion after consideration of public interest and input.

PIP Contingency Plan

During a public health emergency or other unforeseen event outside the control of the Department, the Department will make every effort to ensure the public remains involved in and informed of the decision making and permit processes. The purpose of this PIP Contingency Plan is in part to address circumstances when public spaces are closed because of potential human exposure risks. The Department will attempt to identify and utilize alternate methods of document delivery to the public and public viewing when conventional methods and locations are unavailable. When it is unsafe to utilize the physical PIP and document repositories, the Department will consider utilizing electronic delivery methods deemed appropriate for the permitting action. While operating under the PIP Contingency Plan, the PN-2 will include a statement specifying that the PIP Contingency Plan is in effect and that, "instead of placing a copy of the PIP for this permitting action in a public location, NMED will make the PIP available to the community by sending the PIP by email or US mail to any community member requesting a copy. An individual may request a copy of the PIP utilizing the Bureau contact information in this public notice. When making such a request, please specify how you would like the document delivered. If you request a copy of a PIP, you will receive a revised PIP should the PIP be updated in the future." During the times of potential human exposure risks and the resultant implementation of this PIP Contingency Plan, public meetings and hearings will only be held when or through means by which the Department can ensure the public's health and safety and this PIP can be fully adhered to.

Attachments

- LEP Assessment
- A copy of the EJSCREEN Community Report, and a map showing the area evaluated

Table of Mandated Public Involvement Activities

Activity	Dates
<p>Application Notice (PN-1): The first notice of the Bureau’s receipt of the permit application – applicant’s obligations at 20.6.2.3108.B and C NMAC – Bureau’s obligations at 20.6.2.3108.E NMAC</p> <ul style="list-style-type: none"> • Newspaper display ads (PN-1 synopsis¹ in English and Spanish)- Applicant obligation • NMED website https://www.env.nm.gov/public-notices/ • Notice to government agencies • Notice to interested parties 	<p>Within 30 days of the department deeming the application administratively complete</p>
<p>Permit Notice (PN-2): Notice to the public of the availability of a draft permit for a 30-day review and comment period – the notice will outline the process for requesting a public hearing – obligation at 20.6.2.3108.H through J NMAC</p> <ul style="list-style-type: none"> • NMED website https://www.env.nm.gov/public-notices/ • Newspaper legal ads • Notification of interested parties • Notice to government agencies • Notice to Indian Tribes, Pueblos and Nations 	<p>Within 60 days of the department determining the application is technically complete and drafting a permit.</p>
<p>Fact Sheet (for federal facilities, except those with only domestic waste discharges): To include general information regarding the permittee, the facility, the discharge, procedures to be followed in making a final permit determination, the comment period, procedures for a person to request a hearing, contact information to obtain a copy of the draft permit and fact sheet, and a brief summary of the basis of draft permit conditions – obligation at 20.6.2.3108.I NMAC²</p>	<p>With the PN-2</p>
<p>Public Hearing Notice (if required): Upon the Department’s determination that there is substantial public interest in the permit – obligation at 20.6.2.3108.M NMAC. Notice includes information on how to participate in the hearing, and how to request an interpreter or auxiliary aid if needed.</p> <ul style="list-style-type: none"> • NMED website https://www.env.nm.gov/public-notices/ • Newspapers 	<p>Notice of the hearing shall occur at least 30 days prior to the hearing.</p>

¹ Suitable for display, the abbreviated format of the PN-1 synopsis does not contain all the information provided by a full public notice, e.g., language assistance or non-discrimination information.

² NMED considers the cited regulation to more appropriately reference the information in 20.6.2.3108.K instead distribution methods of 20.6.2.3108.J NMAC.

<ul style="list-style-type: none"> • Notice to interested parties • Notice to government agencies • Notice to Indian Tribes, Pueblos and Nations 	
<p>Response to Comments (if comments received): Upon the Secretary’s decision regarding issuance of a discharge permit – obligation at 20.6.2.3109.B NMAC. The Response to Comments shall specify which provisions, if any, in the draft permit were changed and the reasons for the change, and shall briefly describe and respond to all significant comments on the draft permit raised during the public comment period or at any hearing. The Secretary shall notify persons who participated in the permitting action by mail or email of the action taken and the reasons for such action and shall include a copy of the Response to Comments.</p>	<p>Response is issued 30 days after the administrative record is complete and all required information is available</p>

ATTACHMENT
Limited English Proficiency (LEP) Assessment
Facility: Johnny's Septage Disposal Facility, DP-1762

Factor 1: The Number and Proportion of LEP Individuals Eligible to be Served or Likely to be Encountered in Community of Concern

See Public Involvement Plan (PIP), Table of EJSCREEN Results for the Affected Community.

Conclusions:

1. The percentage of total non-English languages spoken at home is 79%.
2. The percentage of limited English households is 13%, which is somewhat greater than the statewide average.
3. Spanish is the predominant non-English language spoken by LEP persons.
4. Historical participation: The Bureau maintains a facility-specific mailing list. The current mailing list for the facility includes 3 persons or entities. A review of the administrative record for this facility indicates limited public interest/participation overall during the past 10 years. The portion of that public interest attributable to the LEP community cannot be determined from the record.

Factor 2: Frequency with which LEP Individuals Might Come in Contact with the Program

Contact with the discharge permitting process primarily occurs when a permit application is under review. The GWQB provides notice to the public and encourages participation. Individuals may participate by requesting information, submitting comments on draft permits, requesting hearings, and taking part in hearings. Some permits generate considerable public interest, but participation is low for most permits. Historical participation in permitting activities for this facility is summarized under Factor 1.

Conclusion:

LEP participation and overall public interest in this facility have been limited historically. Based on this record, the Bureau considers the potential for LEP contact with the permitting process to be "infrequent."

Factor 3: Nature and Importance of the Activity or Service Provided by the Program

The permitting activity is deemed by the GWQB to be "important" to NMED, the impacted community, and the State of New Mexico. The permitting activity is important to NMED because the permit establishes site-specific requirements that must be met to ensure protection of public health and groundwater quality and provides a means to enforce those requirements. The permitting activity is important to the impacted community because poorly operated waste treatment facilities have the potential to pose a public nuisance and adversely affect the quality

of life of people living in the vicinity of the facility. The permitting activity is important to the State of New Mexico because establishment of effective permits ensures that discharges will not impact the State's limited groundwater resources and that waste disposal is conducted in a consistent manner throughout the State.

Conclusion:

The GWQB considers the permitting activity “important” to NMED, to the state as a whole, and to the impacted community.

Factor 4: Resources Available to NMED for LEP Services and Associated Costs

For outreach to LEP communities associated with this permit action, NMED employs an in-house Spanish translator/interpreter and utilizes a phone interpretation service to assist during direct communication between LEP individuals and NMED staff. The costs of newspaper publication of public notice in Spanish and of interpretive services for a public meeting or hearing are being incorporated into the Bureau’s budget, to the extent possible. Fees collected from the permittee in accordance with the schedule at 20.6.2.3114 NMAC are not sufficient to cover these costs.

Conclusion:

The Bureau can accommodate the costs of the LEP services identified in this plan. If additional services are requested, the budgetary implications will be reviewed.

LEP Services Plan:

To accommodate the needs of the LEP individuals who may be interested in this permitting process, the Bureau plans to:

1. Translate the Public Notice Two (PN-2) and any subsequent public notices into Spanish and publish in a paper serving the local community.
2. Provide interpretive services at any public meeting or public hearing, if requested.
3. Interact with members of the LEP community using certified interpreters, when needed and feasible.

The Bureau will consider requests from members of the affected community for additional LEP services.



EJScreen Community Report

This report provides environmental and socioeconomic information for user-defined areas, and combines that data into environmental justice and supplemental indexes.

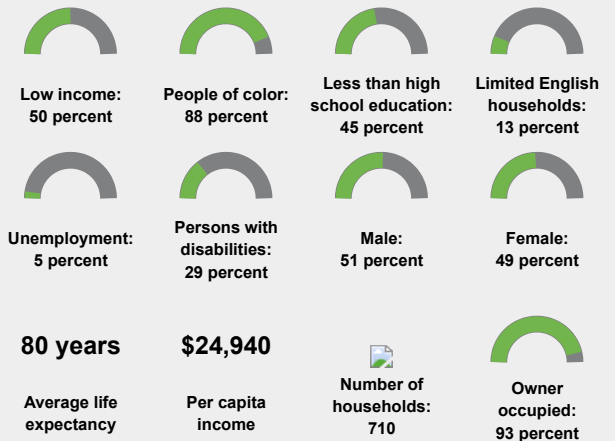
Doña Ana County, NM

4 miles Ring Centered at 32.201245,-106.644340
Population: 1,746
Area in square miles: 50.26

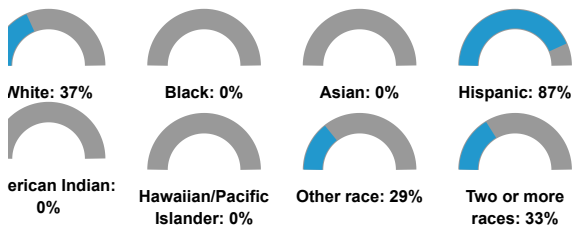
LANGUAGES SPOKEN AT HOME

LANGUAGE	PERCENT
English	21%
Spanish	74%
Other and Unspecified	5%
Total Non-English	79%

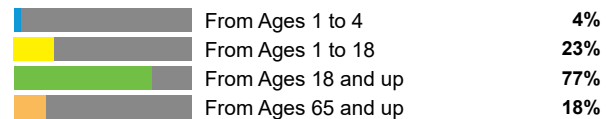
COMMUNITY INFORMATION



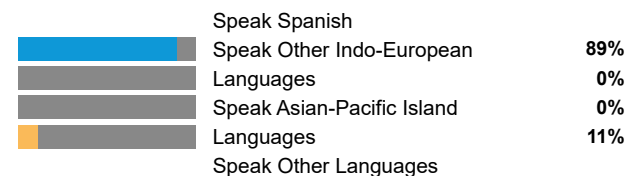
BREAKDOWN BY RACE



BREAKDOWN BY AGE



LIMITED ENGLISH SPEAKING BREAKDOWN



Notes: Numbers may not sum to totals due to rounding. Hispanic population can be of any race. Source: U.S. Census Bureau, American Community Survey (ACS) 2017-2021. Life expectancy data comes from the Centers for Disease Control.

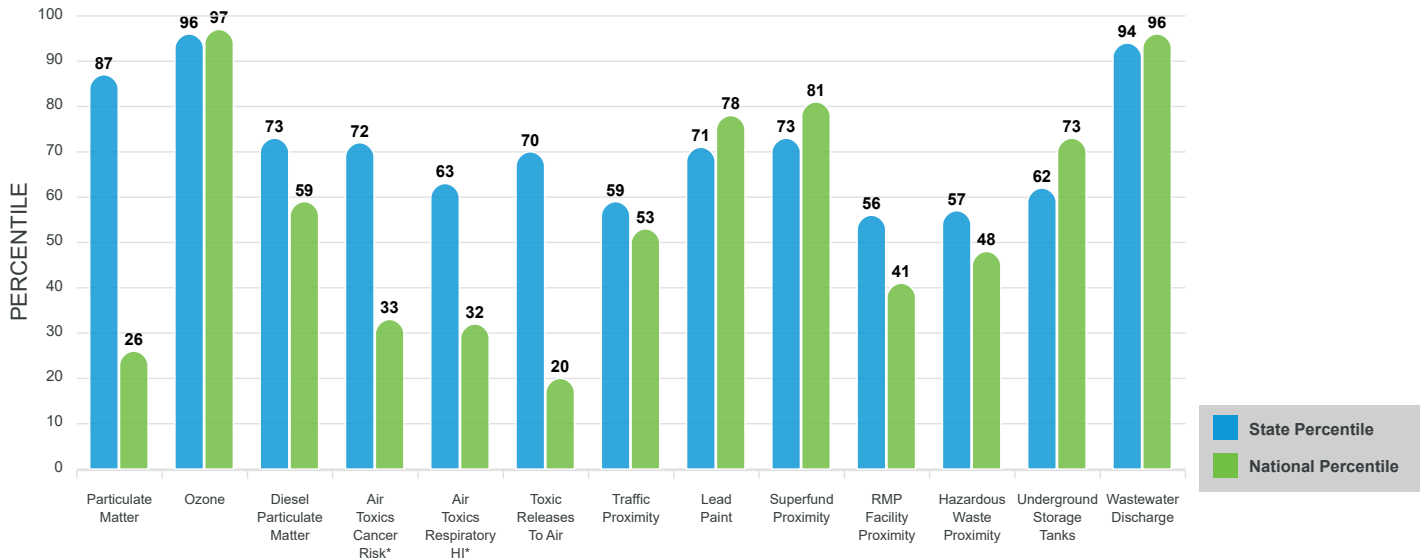
Environmental Justice & Supplemental Indexes

The environmental justice and supplemental indexes are a combination of environmental and socioeconomic information. There are thirteen EJ indexes and supplemental indexes in EJScreen reflecting the 13 environmental indicators. The indexes for a selected area are compared to those for all other locations in the state or nation. For more information and calculation details on the EJ and supplemental indexes, please visit the [EJScreen website](#).

EJ INDEXES

The EJ indexes help users screen for potential EJ concerns. To do this, the EJ index combines data on low income and people of color populations with a single environmental indicator.

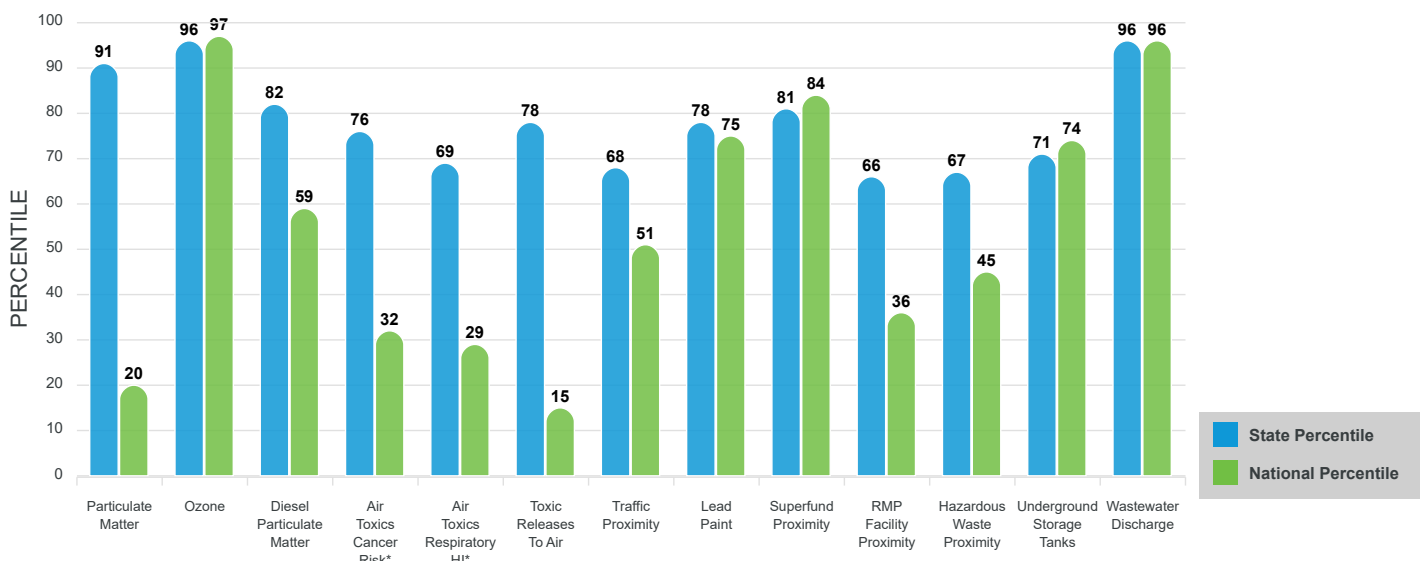
EJ INDEXES FOR THE SELECTED LOCATION



SUPPLEMENTAL INDEXES

The supplemental indexes offer a different perspective on community-level vulnerability. They combine data on percent low-income, percent linguistically isolated, percent less than high school education, percent unemployed, and low life expectancy with a single environmental indicator.

SUPPLEMENTAL INDEXES FOR THE SELECTED LOCATION



These percentiles provide perspective on how the selected block group or buffer area compares to the entire state or nation.

EJScreen Environmental and Socioeconomic Indicators Data

SELECTED VARIABLES	VALUE	STATE AVERAGE	PERCENTILE IN STATE	USA AVERAGE	PERCENTILE IN USA
POLLUTION AND SOURCES					
Particulate Matter ($\mu\text{g}/\text{m}^3$)	5.92	5.16	74	8.08	7
Ozone (ppb)	69.9	64.7	95	61.6	93
Diesel Particulate Matter ($\mu\text{g}/\text{m}^3$)	0.127	0.194	51	0.261	24
Air Toxics Cancer Risk* (lifetime risk per million)	20	20	26	28	3
Air Toxics Respiratory HI*	0.2	0.21	29	0.31	4
Toxic Releases to Air	3.9	29	46	4,600	6
Traffic Proximity (daily traffic count/distance to road)	17	84	41	210	22
Lead Paint (% Pre-1960 Housing)	0.17	0.19	60	0.3	44
Superfund Proximity (site count/km distance)	0.061	0.14	53	0.13	50
RMP Facility Proximity (facility count/km distance)	0.058	0.15	36	0.43	13
Hazardous Waste Proximity (facility count/km distance)	0.09	0.73	38	1.9	18
Underground Storage Tanks (count/km ²)	0.58	3.3	44	3.9	41
Wastewater Discharge (toxicity-weighted concentration/m distance)	0.62	0.47	92	22	90
SOCIOECONOMIC INDICATORS					
Demographic Index	69%	51%	78	35%	89
Supplemental Demographic Index	27%	17%	86	14%	91
People of Color	88%	62%	81	39%	87
Low Income	50%	40%	66	31%	80
Unemployment Rate	5%	7%	51	6%	56
Limited English Speaking Households	13%	6%	84	5%	88
Less Than High School Education	45%	14%	96	12%	97
Under Age 5	4%	5%	50	6%	43
Over Age 64	18%	19%	54	17%	59
Low Life Expectancy	20%	19%	51	20%	51

*Diesel particulate matter, air toxics cancer risk, and air toxics respiratory hazard index are from the EPA's Air Toxics Data Update, which is the Agency's ongoing, comprehensive evaluation of air toxics in the United States. This effort aims to prioritize air toxics, emission sources, and locations of interest for further study. It is important to remember that the air toxics data presented here provide broad estimates of health risks over geographic areas of the country, not definitive risks to specific individuals or locations. Cancer risks and hazard indices from the Air Toxics Data Update are reported to one significant figure and any additional significant figures here are due to rounding. More information on the Air Toxics Data Update can be found at: <https://www.epa.gov/haps/air-toxics-data-update>.

Sites reporting to EPA within defined area:

Superfund	0
Hazardous Waste, Treatment, Storage, and Disposal Facilities	0
Water Dischargers	32
Air Pollution	6
Brownfields	0
Toxic Release Inventory	0

Other community features within defined area:

Schools	1
Hospitals	0
Places of Worship	2

Other environmental data:

Air Non-attainment	No
Impaired Waters	No

Selected location contains American Indian Reservation Lands* No
 Selected location contains a "Justice40 (CEJST)" disadvantaged community Yes
 Selected location contains an EPA IRA disadvantaged community Yes

Report for 4 miles Ring Centered at 32.201245,-106.644340

EJScreen Environmental and Socioeconomic Indicators Data

HEALTH INDICATORS

INDICATOR	HEALTH VALUE	STATE AVERAGE	STATE PERCENTILE	US AVERAGE	US PERCENTILE
Low Life Expectancy	20%	19%	51	20%	51
Heart Disease	5.9	6.2	38	6.1	46
Asthma	10.5	10.3	64	10	66
Cancer	4.1	5.7	13	6.1	12
Persons with Disabilities	30.7%	16.6%	96	13.4%	98

CLIMATE INDICATORS

INDICATOR	HEALTH VALUE	STATE AVERAGE	STATE PERCENTILE	US AVERAGE	US PERCENTILE
Flood Risk	10%	9%	70	12%	67
Wildfire Risk	1%	58%	29	14%	78

CRITICAL SERVICE GAPS

INDICATOR	HEALTH VALUE	STATE AVERAGE	STATE PERCENTILE	US AVERAGE	US PERCENTILE
Broadband Internet	21%	22%	56	14%	76
Lack of Health Insurance	6%	9%	34	9%	43
Housing Burden	No	N/A	N/A	N/A	N/A
Transportation Access	Yes	N/A	N/A	N/A	N/A
Food Desert	Yes	N/A	N/A	N/A	N/A

Footnotes

Report for 4 miles Ring Centered at 32.201245,-106.644340

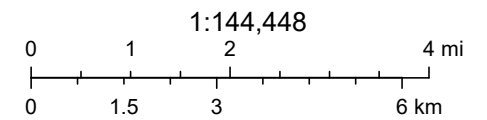
DP-1762



8/2/2023



DP-1762



Esri, HERE, Garmin, Earthstar Geographics