



EJScreen Community Report

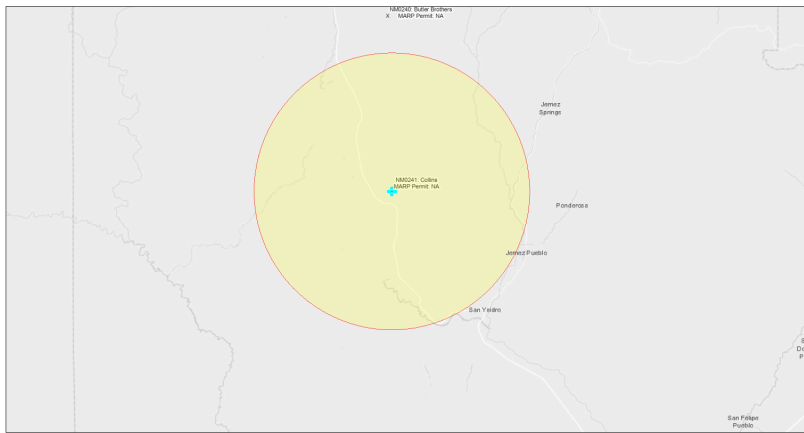
This report provides environmental and socioeconomic information for user-defined areas, and combines that data into environmental justice and supplemental indexes.

Collins NM0241

10 miles Ring Centered at 35.679967,-106.897226

Population: 453

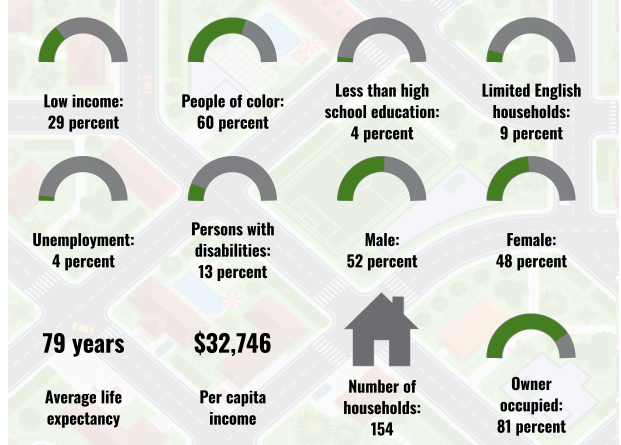
Area in square miles: 314.03



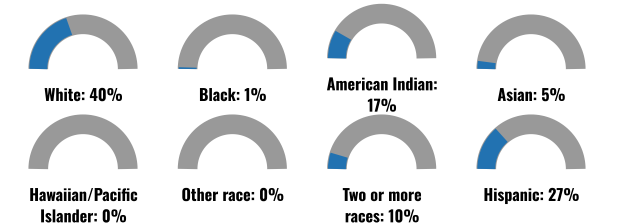
September 25, 2024
 Collins NM0241
 * Abandoned Uranium Mines

1:288,895
 Bureau of Land Management, Esri, HERE, Garmin, IGN, IQIG, NOAA, NPS, TomTom, Swire, and National Resources Department, Esri, HERE, IHS

COMMUNITY INFORMATION



BREAKDOWN BY RACE



BREAKDOWN BY AGE



LIMITED ENGLISH SPEAKING BREAKDOWN



LANGUAGES SPOKEN AT HOME

LANGUAGE	PERCENT
English	28%
Spanish	14%
Other and Unspecified	58%
Total Non-English	72%

Notes: Numbers may not sum to totals due to rounding. Hispanic population can be of any race. Source: U.S. Census Bureau, American Community Survey (ACS) 2018-2022. Life expectancy data comes from the Centers for Disease Control.

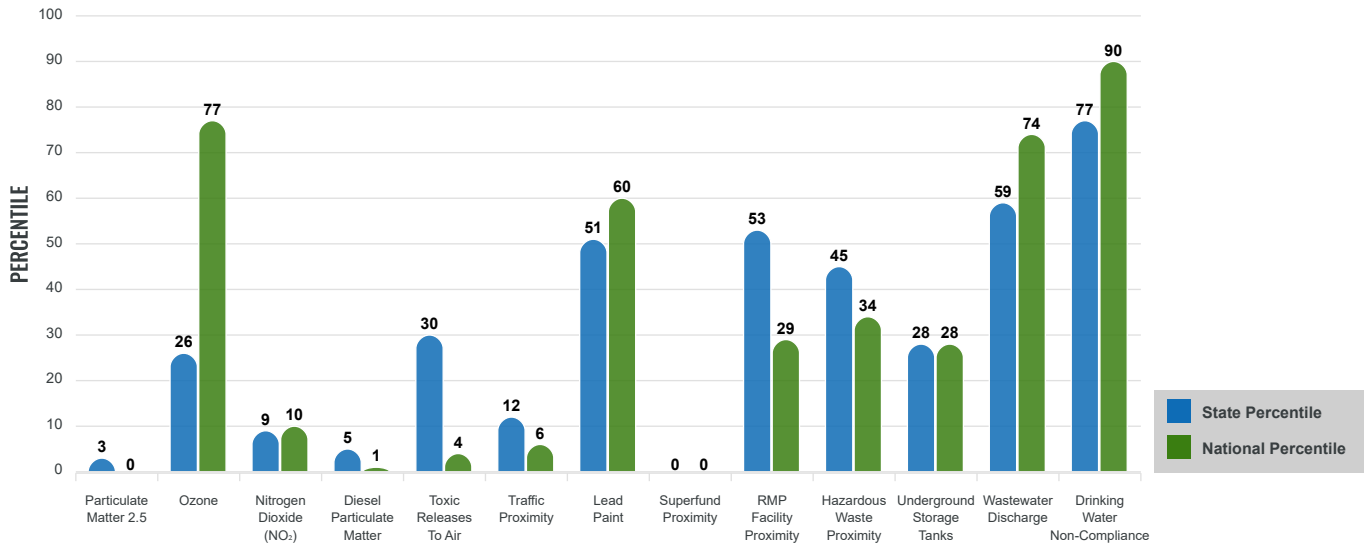
Environmental Justice & Supplemental Indexes

The environmental justice and supplemental indexes are a combination of environmental and socioeconomic information. There are thirteen EJ indexes and supplemental indexes in EJScreen reflecting the 13 environmental indicators. The indexes for a selected area are compared to those for all other locations in the state or nation. For more information and calculation details on the EJ and supplemental indexes, please visit the [EJScreen website](#).

EJ INDEXES

The EJ indexes help users screen for potential EJ concerns. To do this, the EJ index combines data on low income and people of color populations with a single environmental indicator.

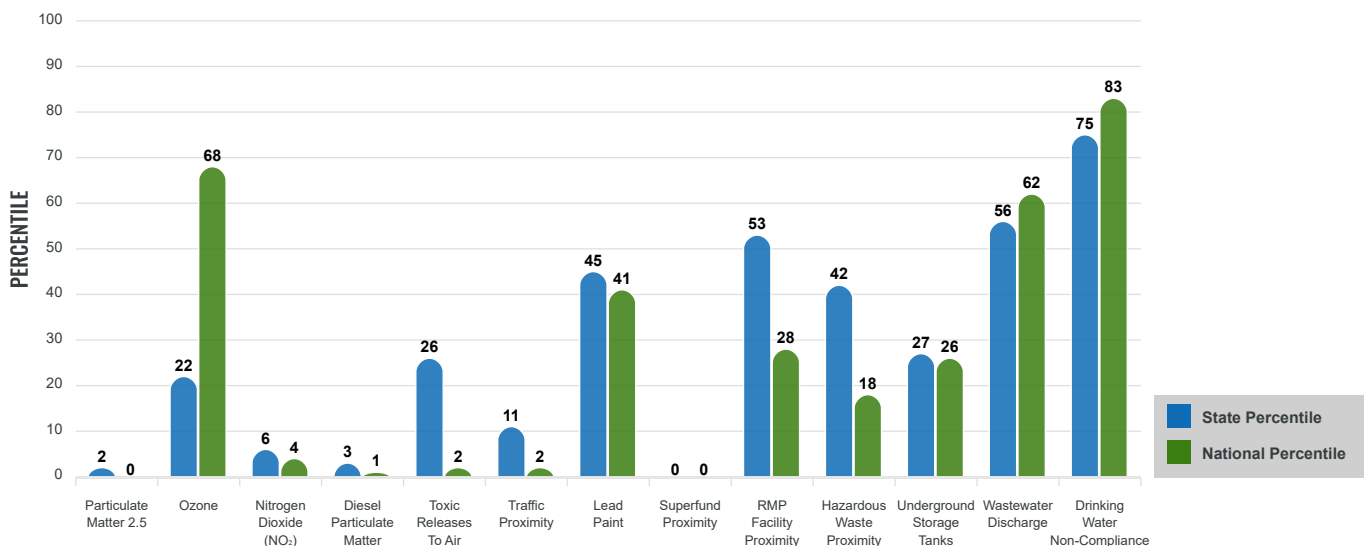
EJ INDEXES FOR THE SELECTED LOCATION



SUPPLEMENTAL INDEXES

The supplemental indexes offer a different perspective on community-level vulnerability. They combine data on percent low income, percent persons with disabilities, percent less than high school education, percent limited English speaking, and percent low life expectancy with a single environmental indicator.

SUPPLEMENTAL INDEXES FOR THE SELECTED LOCATION



Report for 10 miles Ring Centered at 35.679967,-106.897226

Report produced September 25, 2024 using EJScreen Version 2.3

EJScreen Environmental and Socioeconomic Indicators Data

SELECTED VARIABLES	VALUE	STATE AVERAGE	PERCENTILE IN STATE	USA AVERAGE	PERCENTILE IN USA
ENVIRONMENTAL BURDEN INDICATORS					
Particulate Matter 2.5 (µg/m ³)	4.49	6.11	2	8.45	0
Ozone (ppb)	63.3	65.3	25	61.8	64
Nitrogen Dioxide (NO ₂) (ppbv)	2.6	8.1	7	7.8	4
Diesel Particulate Matter (µg/m ³)	0.0119	0.187	3	0.191	0
Toxic Releases to Air (toxicity-weighted concentration)	0.47	29	41	4,600	3
Traffic Proximity (daily traffic count/distance to road)	4,600	730,000	13	1,700,000	3
Lead Paint (% Pre-1960 Housing)	0.13	0.19	56	0.3	39
Superfund Proximity (site count/km distance)	0	0.34	0	0.39	0
RMP Facility Proximity (facility count/km distance)	0.0031	0.2	53	0.57	28
Hazardous Waste Proximity (facility count/km distance)	0.041	1.2	36	3.5	15
Underground Storage Tanks (count/km ²)	0.0021	2.8	28	3.6	27
Wastewater Discharge (toxicity-weighted concentration/m distance)	180	990000	59	700000	60
Drinking Water Non-Compliance (points)	2.6	5.6	83	2.2	87
SOCIOECONOMIC INDICATORS					
Demographic Index USA	1.65	N/A	N/A	1.34	68
Supplemental Demographic Index USA	1.5	N/A	N/A	1.64	47
Demographic Index State	1.9	2.16	40	N/A	N/A
Supplemental Demographic Index State	1.23	1.62	30	N/A	N/A
People of Color	60%	62%	45	40%	72
Low Income	29%	39%	35	30%	54
Unemployment Rate	4%	6%	50	6%	55
Limited English Speaking Households	8%	6%	75	5%	82
Less Than High School Education	4%	14%	27	11%	31
Under Age 5	5%	5%	56	5%	49
Over Age 64	20%	20%	60	18%	67

*Diesel particulate matter index is from the EPA's Air Toxics Data Update, which is the Agency's ongoing, comprehensive evaluation of air toxics in the United States. This effort aims to prioritize air toxics, emission sources, and locations of interest for further study. It is important to remember that the air toxics data presented here provide broad estimates of health risks over geographic areas of the country, not definitive risks to specific individuals or locations. More information on the Air Toxics Data Update can be found at: <https://www.epa.gov/haps/air-toxics-data-update>.

Sites reporting to EPA within defined area:

Superfund	0
Hazardous Waste, Treatment, Storage, and Disposal Facilities	0
Water Dischargers	1
Air Pollution	3
Brownfields	0
Toxic Release Inventory	0

Other community features within defined area:

Schools	3
Hospitals	0
Places of Worship	2

Other environmental data:

Air Non-attainment	No
Impaired Waters	Yes

Selected location contains American Indian Reservation Lands*	Yes
Selected location contains a "Justice40 (CEJST)" disadvantaged community	Yes
Selected location contains an EPA IRA disadvantaged community	Yes

Report for 10 miles Ring Centered at 35.679967,-106.897226
 Report produced September 25, 2024 using EJScreen Version 2.3

EJScreen Environmental and Socioeconomic Indicators Data

HEALTH INDICATORS

INDICATOR	VALUE	STATE AVERAGE	STATE PERCENTILE	US AVERAGE	US PERCENTILE
Low Life Expectancy	2%	19%	0	20%	0
Heart Disease	7.2	5.9	80	5.8	78
Asthma	11.5	11.2	73	10.3	83
Cancer	7.3	6.1	80	6.4	67
Persons with Disabilities	12.6%	17.1%	26	13.7%	48

CLIMATE INDICATORS

INDICATOR	VALUE	STATE AVERAGE	STATE PERCENTILE	US AVERAGE	US PERCENTILE
Flood Risk	23%	9%	91	12%	87
Wildfire Risk	95%	58%	62	14%	92

CRITICAL SERVICE GAPS

INDICATOR	VALUE	STATE AVERAGE	STATE PERCENTILE	US AVERAGE	US PERCENTILE
Broadband Internet	22%	20%	63	13%	81
Lack of Health Insurance	10%	10%	59	9%	67
Housing Burden	No	N/A	N/A	N/A	N/A
Transportation Access Burden	Yes	N/A	N/A	N/A	N/A
Food Desert	Yes	N/A	N/A	N/A	N/A

Report for 10 miles Ring Centered at 35.679967,-106.897226

Report produced September 25, 2024 using EJScreen Version 2.3

Location: User-specified point center at 35.679967, -106.897226
 Ring (buffer): 10-miles radius
 Description: Collins NM0241

Summary of ACS Estimates		2018 - 2022
Population		453
Population Density (per sq. mile)		2
People of Color Population		273
% People of Color Population		60%
Households		154
Housing Units		242
Housing Units Built Before 1950		17
Per Capita Income		32,746
Land Area (sq. miles) (Source: SF1)		294.03
% Land Area		100%
Water Area (sq. miles) (Source: SF1)		0.05
% Water Area		0%

	2018 - 2022 ACS Estimates	Percent	MOE (±)
Population by Race			
Total	453	100%	485
Population Reporting One Race	335	74%	890
White	200	44%	233
Black	3	1%	61
American Indian	80	18%	386
Asian	25	5%	97
Pacific Islander	0	0%	13
Some Other Race	28	6%	100
Population Reporting Two or More Races	117	26%	337
Total Hispanic Population	121	27%	254
Total Non-Hispanic Population	332		
White Alone	179	40%	224
Black Alone	3	1%	61
American Indian Alone	78	17%	385
Non-Hispanic Asian Alone	25	5%	97
Pacific Islander Alone	0	0%	13
Other Race Alone	1	0%	13
Two or More Races Alone	46	10%	245
Population by Sex			
Male	234	52%	312
Female	219	48%	300
Population by Age			
Age 0-4	21	5%	84
Age 0-17	94	21%	221
Age 18+	359	79%	282
Age 65+	93	20%	110

Data Note: Detail may not sum to totals due to rounding. Hispanic population can be of any race.

N/A means not available. **Source:** U.S. Census Bureau, American Community Survey (ACS) 2018 - 2022

Location: User-specified point center at 35.679967, -106.897226
 Ring (buffer): 10-miles radius
 Description: Collins NM0241

	2018 - 2022 ACS Estimates	Percent	MOE (±)
Population 25+ by Educational Attainment			
Total	346	100%	283
Less than 9th Grade	4	1%	44
9th - 12th Grade, No Diploma	10	3%	86
High School Graduate	70	20%	141
Some College, No Degree	66	19%	113
Associate Degree	29	8%	81
Bachelor's Degree or more	168	48%	229
Population Age 5+ Years by Ability to Speak English			
Total	432	100%	447
Speak only English	271	63%	265
Non-English at Home ¹⁺²⁺³⁺⁴	161	37%	291
¹ Speak English "very well"	64	15%	203
² Speak English "well"	95	22%	270
³ Speak English "not well"	2	0%	65
⁴ Speak English "not at all"	0	0%	45
³⁺⁴ Speak English "less than well"	2	0%	79
²⁺³⁺⁴ Speak English "less than very well"	97	22%	277
Limited English Speaking Households*			
Total	14	100%	74
Speak Spanish	8	55%	71
Speak Other Indo-European Languages	0	0%	13
Speak Asian-Pacific Island Languages	0	0%	13
Speak Other Languages	6	45%	59
Households by Household Income			
Household Income Base	154	100%	176
< \$15,000	18	11%	83
\$15,000 - \$25,000	7	4%	36
\$25,000 - \$50,000	22	14%	78
\$50,000 - \$75,000	6	4%	44
\$75,000 +	102	66%	190
Occupied Housing Units by Tenure			
Total	154	100%	176
Owner Occupied	124	81%	169
Renter Occupied	30	19%	84
Employed Population Age 16+ Years			
Total	381	100%	345
In Labor Force	217	57%	232
Civilian Unemployed in Labor Force	9	4%	34
Not In Labor Force	163	43%	201

Data Note: Detail may not sum to totals due to rounding. Hispanic population can be of anyrace.

N/A means not available. **Source:** U.S. Census Bureau, American Community Survey (ACS)

*Households in which no one 14 and over speaks English "very well" or speaks English only.

Location: User-specified point center at 35.679967, -106.897226

Ring (buffer): 10-miles radius

Description: Collins NM0241

	2018 - 2022 ACS Estimates	Percent	MOE (±)
Population by Language Spoken at Home*			
Total (persons age 5 and above)	3,076	100%	371
English	859	28%	279
Spanish	442	14%	284
French, Haitian, or Cajun	0	0%	13
German or other West Germanic	0	0%	13
Russian, Polish, or Other Slavic	2	0%	13
Other Indo-European	0	0%	13
Korean	0	0%	13
Chinese (including Mandarin, Cantonese)	0	0%	13
Vietnamese	1	0%	13
Tagalog (including Filipino)	0	0%	13
Other Asian and Pacific Island	0	0%	13
Arabic	0	0%	13
Other and Unspecified	1,772	58%	354
Total Non-English	2,217	72%	441

Data Note: Detail may not sum to totals due to rounding. Hispanic population can be of any race.
N/A means not available. **Source:** U.S. Census Bureau, American Community Survey (ACS) 2018 - 2022.
*Population by Language Spoken at Home is available at the census tract summary level and up.