



EJScreen Community Report

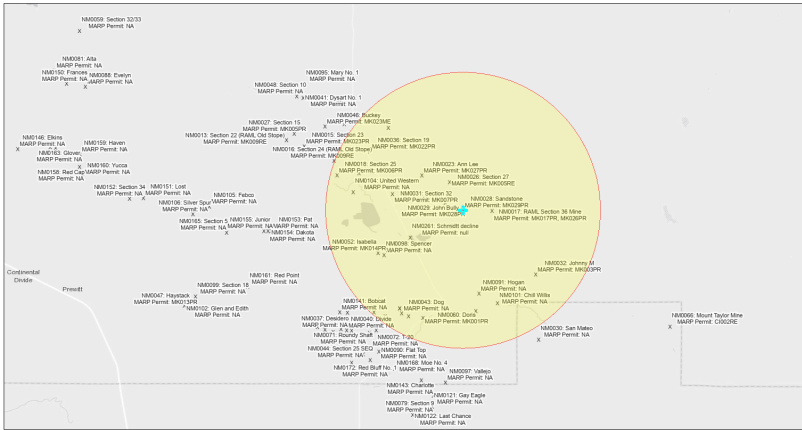
This report provides environmental and socioeconomic information for user-defined areas, and combines that data into environmental justice and supplemental indexes.

Sandstone NM0028

5 miles Ring Centered at 35.396200,-107.769010

Population: 9

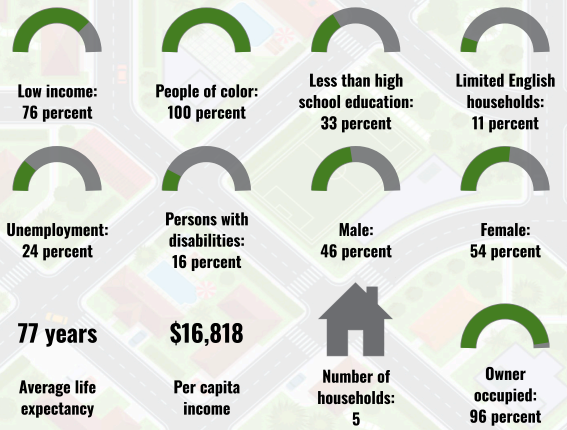
Area in square miles: 78.53



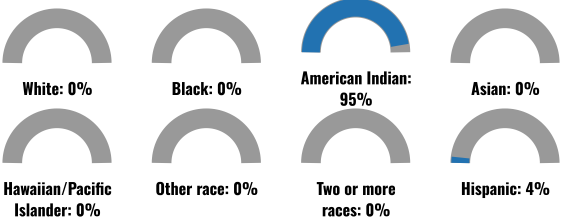
September 10, 2024
 Sandstone NM0028
 Abandoned Uranium Mines

1:144,448
 Bureau of Land Management, EPA, HERE, Garmin, iSOCS, IBM, IHS, Intel, Microsoft, Oracle, and National Resources Department, Esri, HERE, IHS, IHS

COMMUNITY INFORMATION



BREAKDOWN BY RACE



BREAKDOWN BY AGE



LIMITED ENGLISH SPEAKING BREAKDOWN



Notes: Numbers may not sum to totals due to rounding. Hispanic population can be of any race. Source: U.S. Census Bureau American Community Survey (ACS) 2018-2022. Life expectancy data comes from the Centers for Disease Control.

LANGUAGES SPOKEN AT HOME

LANGUAGE	PERCENT
No language data available.	

Report for 5 miles Ring Centered at 35.396200,-107.769010
 Report produced September 16, 2024 using EJScreen Version 2.3

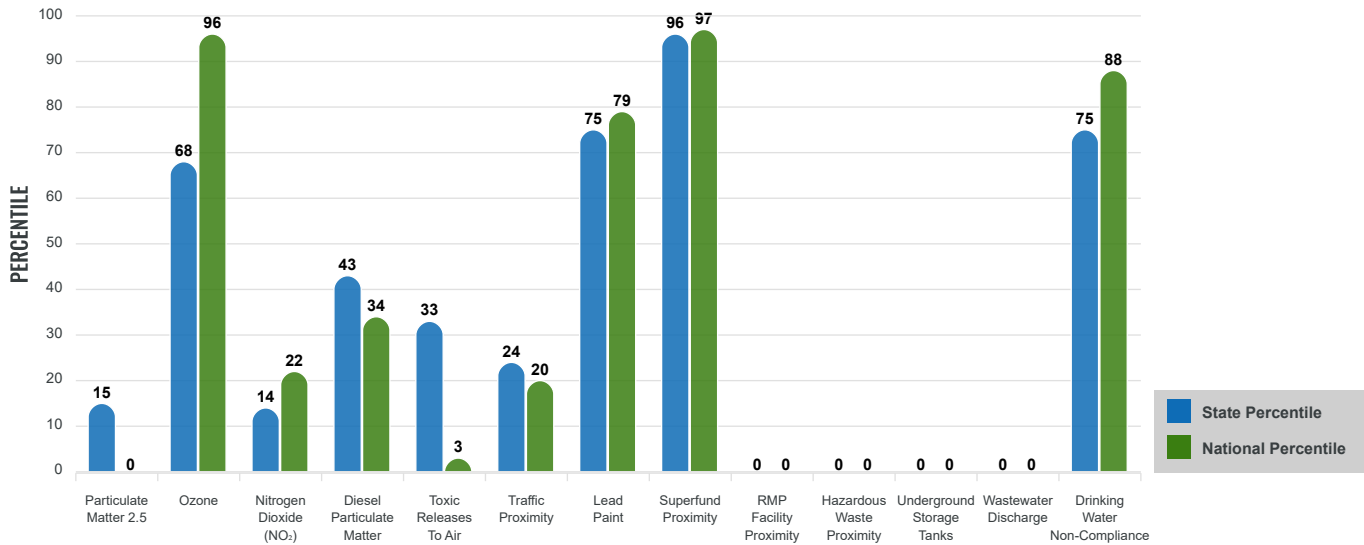
Environmental Justice & Supplemental Indexes

The environmental justice and supplemental indexes are a combination of environmental and socioeconomic information. There are thirteen EJ indexes and supplemental indexes in EJScreen reflecting the 13 environmental indicators. The indexes for a selected area are compared to those for all other locations in the state or nation. For more information and calculation details on the EJ and supplemental indexes, please visit the [EJScreen website](#).

EJ INDEXES

The EJ indexes help users screen for potential EJ concerns. To do this, the EJ index combines data on low income and people of color populations with a single environmental indicator.

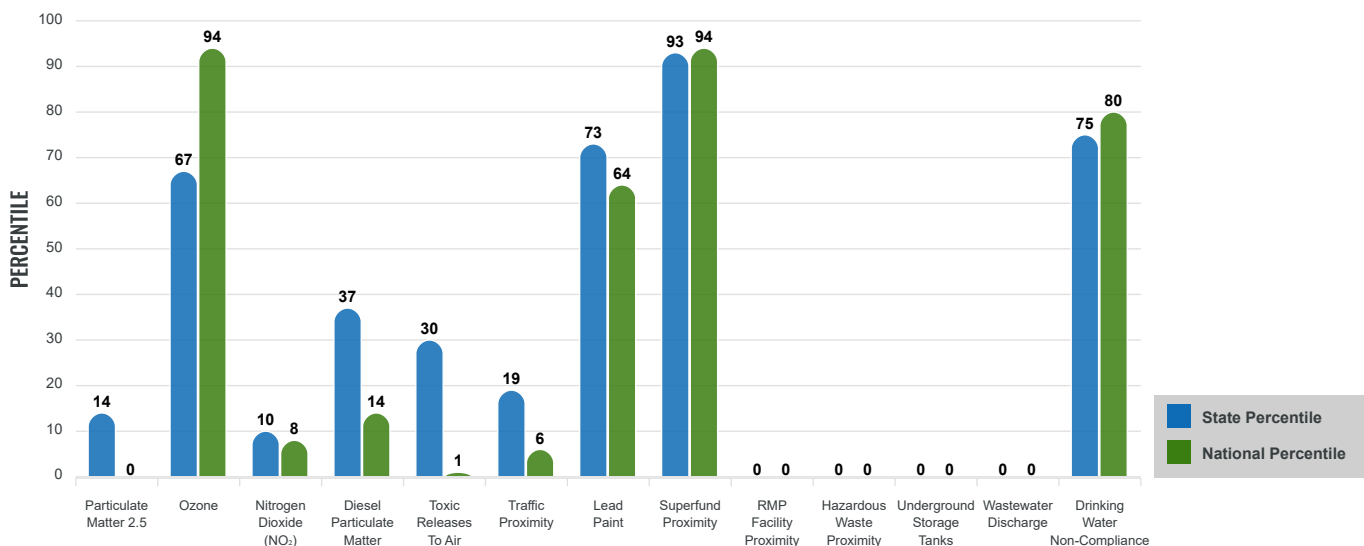
EJ INDEXES FOR THE SELECTED LOCATION



SUPPLEMENTAL INDEXES

The supplemental indexes offer a different perspective on community-level vulnerability. They combine data on percent low income, percent persons with disabilities, percent less than high school education, percent limited English speaking, and percent low life expectancy with a single environmental indicator.

SUPPLEMENTAL INDEXES FOR THE SELECTED LOCATION



Report for 5 miles Ring Centered at 35.396200,-107.769010

Report produced September 16, 2024 using EJScreen Version 2.3

EJScreen Environmental and Socioeconomic Indicators Data

SELECTED VARIABLES	VALUE	STATE AVERAGE	PERCENTILE IN STATE	USA AVERAGE	PERCENTILE IN USA
ENVIRONMENTAL BURDEN INDICATORS					
Particulate Matter 2.5 (µg/m ³)	4.69	6.11	7	8.45	0
Ozone (ppb)	64.4	65.3	36	61.8	68
Nitrogen Dioxide (NO ₂) (ppbv)	2.5	8.1	6	7.8	3
Diesel Particulate Matter (µg/m ³)	0.0454	0.187	23	0.191	6
Toxic Releases to Air (toxicity-weighted concentration)	0.001	29	16	4,600	1
Traffic Proximity (daily traffic count/distance to road)	13,000	730,000	16	1,700,000	5
Lead Paint (% Pre-1960 Housing)	0.097	0.19	50	0.3	35
Superfund Proximity (site count/km distance)	0.38	0.34	80	0.39	80
RMP Facility Proximity (facility count/km distance)	0	0.2	0	0.57	0
Hazardous Waste Proximity (facility count/km distance)	0	1.2	0	3.5	0
Underground Storage Tanks (count/km ²)	0	2.8	0	3.6	0
Wastewater Discharge (toxicity-weighted concentration/m distance)	0	990000	0	700000	0
Drinking Water Non-Compliance (points)	0.41	5.6	72	2.2	75
SOCIOECONOMIC INDICATORS					
Demographic Index USA	3.36	N/A	N/A	1.34	98
Supplemental Demographic Index USA	2.82	N/A	N/A	1.64	94
Demographic Index State	3.75	2.16	97	N/A	N/A
Supplemental Demographic Index State	2.56	1.62	89	N/A	N/A
People of Color	100%	62%	97	40%	97
Low Income	76%	39%	93	30%	96
Unemployment Rate	25%	6%	97	6%	97
Limited English Speaking Households	13%	6%	84	5%	88
Less Than High School Education	33%	14%	90	11%	93
Under Age 5	7%	5%	71	5%	67
Over Age 64	12%	20%	28	18%	32

*Diesel particulate matter index is from the EPA's Air Toxics Data Update, which is the Agency's ongoing, comprehensive evaluation of air toxics in the United States. This effort aims to prioritize air toxics, emission sources, and locations of interest for further study. It is important to remember that the air toxics data presented here provide broad estimates of health risks over geographic areas of the country, not definitive risks to specific individuals or locations. More information on the Air Toxics Data Update can be found at: <https://www.epa.gov/haps/air-toxics-data-update>.

Sites reporting to EPA within defined area:

Superfund	1
Hazardous Waste, Treatment, Storage, and Disposal Facilities	0
Water Dischargers	28
Air Pollution	0
Brownfields	0
Toxic Release Inventory	0

Other community features within defined area:

Schools	0
Hospitals	0
Places of Worship	0

Other environmental data:

Air Non-attainment	No
Impaired Waters	Yes

Selected location contains American Indian Reservation Lands*	Yes
Selected location contains a "Justice40 (CEJST)" disadvantaged community	Yes
Selected location contains an EPA IRA disadvantaged community	Yes

Report for 5 miles Ring Centered at 35.396200,-107.769010
 Report produced September 16, 2024 using EJScreen Version 2.3

EJScreen Environmental and Socioeconomic Indicators Data

HEALTH INDICATORS

INDICATOR	VALUE	STATE AVERAGE	STATE PERCENTILE	US AVERAGE	US PERCENTILE
Low Life Expectancy	23%	19%	79	20%	78
Heart Disease	9.2	5.9	96	5.8	95
Asthma	15.9	11.2	99	10.3	99
Cancer	5.3	6.1	30	6.4	25
Persons with Disabilities	16.4%	17.1%	51	13.7%	71

CLIMATE INDICATORS

INDICATOR	VALUE	STATE AVERAGE	STATE PERCENTILE	US AVERAGE	US PERCENTILE
Flood Risk	16%	9%	83	12%	80
Wildfire Risk	8%	58%	31	14%	81

CRITICAL SERVICE GAPS

INDICATOR	VALUE	STATE AVERAGE	STATE PERCENTILE	US AVERAGE	US PERCENTILE
Broadband Internet	72%	20%	98	13%	99
Lack of Health Insurance	17%	10%	86	9%	88
Housing Burden	No	N/A	N/A	N/A	N/A
Transportation Access Burden	Yes	N/A	N/A	N/A	N/A
Food Desert	Yes	N/A	N/A	N/A	N/A

Report for 5 miles Ring Centered at 35.396200,-107.769010

Report produced September 16, 2024 using EJScreen Version 2.3

Location: User-specified point center at 35.396200, -107.769010
 Ring (buffer): 5-miles radius
 Description: Sandstone NM0028

Summary of ACS Estimates		2018 - 2022
Population		9
Population Density (per sq. mile)		0
People of Color Population		9
% People of Color Population		100%
Households		5
Housing Units		7
Housing Units Built Before 1950		0
Per Capita Income		16,818
Land Area (sq. miles) (Source: SF1)		58.53
% Land Area		100%
Water Area (sq. miles) (Source: SF1)		0.11
% Water Area		0%

	2018 - 2022 ACS Estimates	Percent	MOE (±)
Population by Race			
Total	9	100%	520
Population Reporting One Race	9	96%	879
White	0	0%	377
Black	0	0%	196
American Indian	9	96%	231
Asian	0	0%	13
Pacific Islander	0	0%	13
Some Other Race	0	0%	49
Population Reporting Two or More Races	0	4%	162
Total Hispanic Population	0	4%	449
Total Non-Hispanic Population	9		
White Alone	0	0%	141
Black Alone	0	0%	196
American Indian Alone	9	95%	229
Non-Hispanic Asian Alone	0	0%	13
Pacific Islander Alone	0	0%	13
Other Race Alone	0	0%	13
Two or More Races Alone	0	0%	14
Population by Sex			
Male	4	46%	410
Female	5	54%	244
Population by Age			
Age 0-4	1	7%	60
Age 0-17	3	29%	130
Age 18+	6	71%	419
Age 65+	1	12%	203

Data Note: Detail may not sum to totals due to rounding. Hispanic population can be of any race.
 N/A means not available. **Source:** U.S. Census Bureau, American Community Survey (ACS) 2018 - 2022

Location: User-specified point center at 35.396200, -107.769010
 Ring (buffer): 5-miles radius
 Description: Sandstone NM0028

	2018 - 2022 ACS Estimates	Percent	MOE (±)
Population 25+ by Educational Attainment			
Total	5	100%	353
Less than 9th Grade	1	11%	36
9th - 12th Grade, No Diploma	1	22%	68
High School Graduate	2	37%	270
Some College, No Degree	1	22%	148
Associate Degree	0	2%	47
Bachelor's Degree or more	0	6%	89
Population Age 5+ Years by Ability to Speak English			
Total	8	100%	513
Speak only English	3	35%	390
Non-English at Home ¹⁺²⁺³⁺⁴	5	65%	232
¹ Speak English "very well"	4	51%	222
² Speak English "well"	1	10%	75
³ Speak English "not well"	0	3%	49
⁴ Speak English "not at all"	0	1%	45
³⁺⁴ Speak English "less than well"	0	4%	66
²⁺³⁺⁴ Speak English "less than very well"	1	13%	100
Limited English Speaking Households*			
Total	1	100%	64
Speak Spanish	0	0%	13
Speak Other Indo-European Languages	0	0%	13
Speak Asian-Pacific Island Languages	0	0%	13
Speak Other Languages	1	100%	60
Households by Household Income			
Household Income Base	5	100%	240
< \$15,000	2	37%	98
\$15,000 - \$25,000	0	8%	18
\$25,000 - \$50,000	2	31%	140
\$50,000 - \$75,000	1	12%	213
\$75,000 +	1	12%	124
Occupied Housing Units by Tenure			
Total	5	100%	240
Owner Occupied	5	96%	163
Renter Occupied	0	4%	204
Employed Population Age 16+ Years			
Total	7	100%	448
In Labor Force	3	49%	398
Civilian Unemployed in Labor Force	1	24%	104
Not In Labor Force	3	51%	269

Data Note: Detail may not sum to totals due to rounding. Hispanic population can be of anyrace.

N/A means not available. **Source:** U.S. Census Bureau, American Community Survey (ACS)

*Households in which no one 14 and over speaks English "very well" or speaks English only.

Location: User-specified point center at 35.396200, -107.769010

Ring (buffer): 5-miles radius

Description: Sandstone NM0028

	2018 - 2022 ACS Estimates	Percent	MOE (±)
Population by Language Spoken at Home*			
Total (persons age 5 and above)	N/A	N/A	N/A
English	N/A	N/A	N/A
Spanish	N/A	N/A	N/A
French, Haitian, or Cajun	N/A	N/A	N/A
German or other West Germanic	N/A	N/A	N/A
Russian, Polish, or Other Slavic	N/A	N/A	N/A
Other Indo-European	N/A	N/A	N/A
Korean	N/A	N/A	N/A
Chinese (including Mandarin, Cantonese)	N/A	N/A	N/A
Vietnamese	N/A	N/A	N/A
Tagalog (including Filipino)	N/A	N/A	N/A
Other Asian and Pacific Island	N/A	N/A	N/A
Arabic	N/A	N/A	N/A
Other and Unspecified	N/A	N/A	N/A
Total Non-English	N/A	N/A	N/A

Data Note: Detail may not sum to totals due to rounding. Hispanic population can be of any race.
 N/A means not available. **Source:** U.S. Census Bureau, American Community Survey (ACS) 2018 - 2022.
 *Population by Language Spoken at Home is available at the census tract summary level and up.