

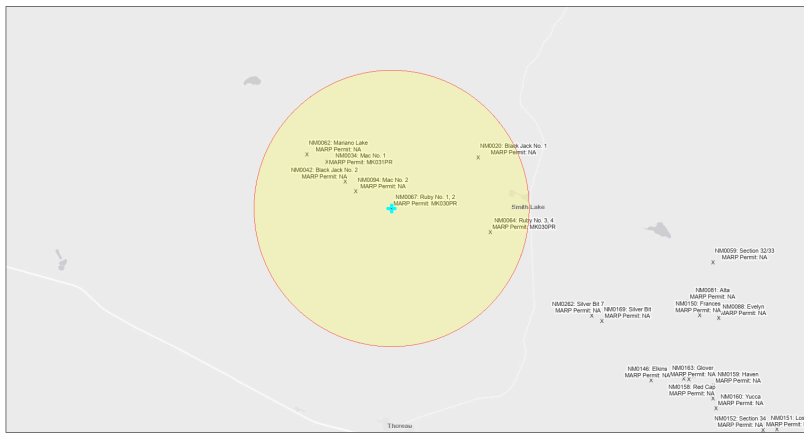


EJScreen Community Report

This report provides environmental and socioeconomic information for user-defined areas, and combines that data into environmental justice and supplemental indexes.

Ruby No. 1,2 NM0067

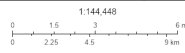
5 miles Ring Centered at 35.518644,-108.223416
Population: 561
Area in square miles: 78.53



September 19, 2024

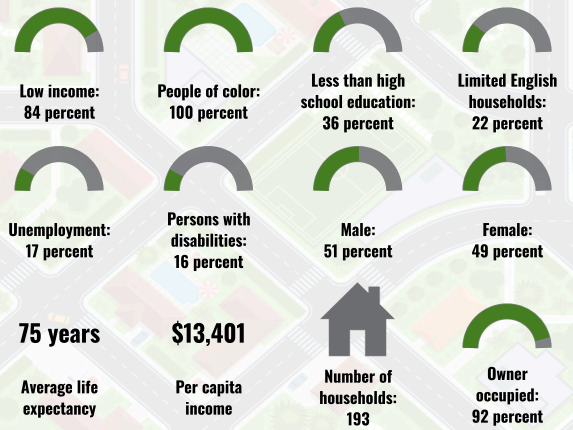
Ruby No. 1,2 NM0067

* Abandoned Uranium Mines

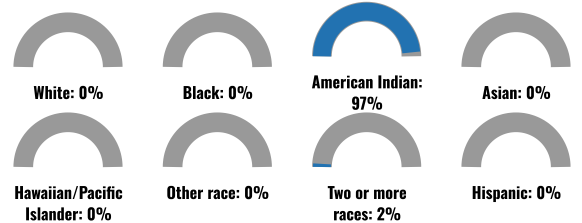


Bureau of Land Management, EPA, HERS, Geomix, USGS, BPA, IHS, New Mexico Energy Storage and Natural Resources Department, EIS, HERS, IHS

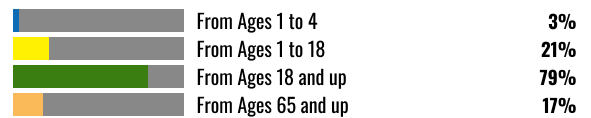
COMMUNITY INFORMATION



BREAKDOWN BY RACE



BREAKDOWN BY AGE



LIMITED ENGLISH SPEAKING BREAKDOWN



Notes: Numbers may not sum to totals due to rounding. Hispanic population can be of any race. Source: U.S. Census Bureau American Community Survey (ACS) 2018-2022. Life expectancy data comes from the Centers for Disease Control.

LANGUAGES SPOKEN AT HOME

LANGUAGE	PERCENT
No language data available.	

Report for 5 miles Ring Centered at 35.518644,-108.223416
Report produced September 19, 2024 using EJScreen Version 2.3

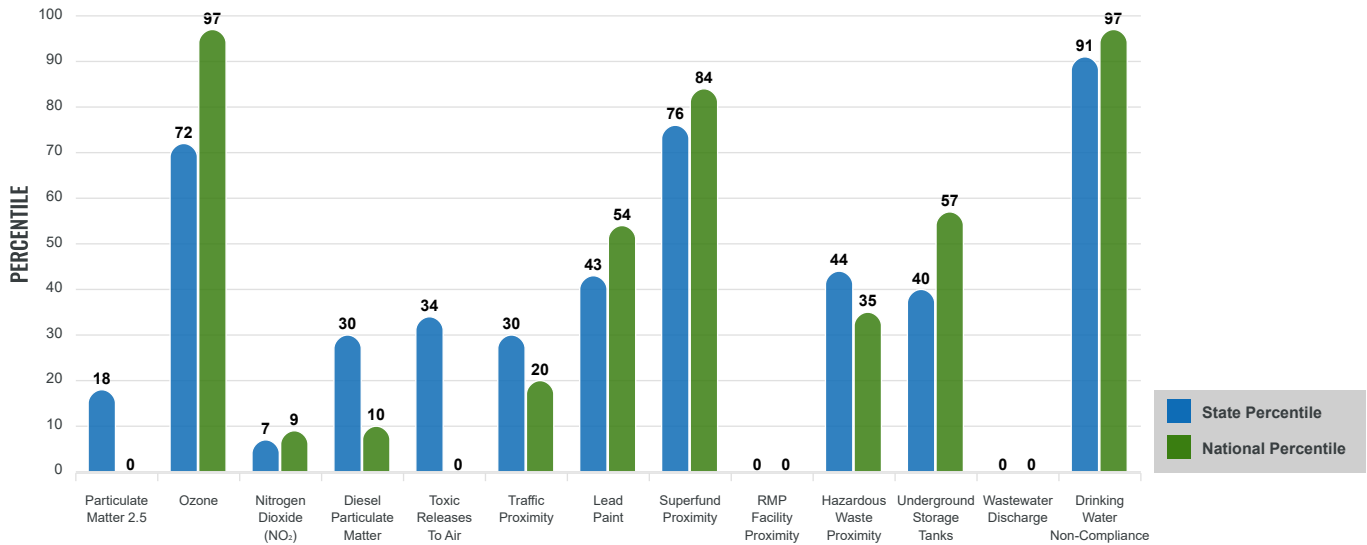
Environmental Justice & Supplemental Indexes

The environmental justice and supplemental indexes are a combination of environmental and socioeconomic information. There are thirteen EJ indexes and supplemental indexes in EJScreen reflecting the 13 environmental indicators. The indexes for a selected area are compared to those for all other locations in the state or nation. For more information and calculation details on the EJ and supplemental indexes, please visit the [EJScreen website](#).

EJ INDEXES

The EJ indexes help users screen for potential EJ concerns. To do this, the EJ index combines data on low income and people of color populations with a single environmental indicator.

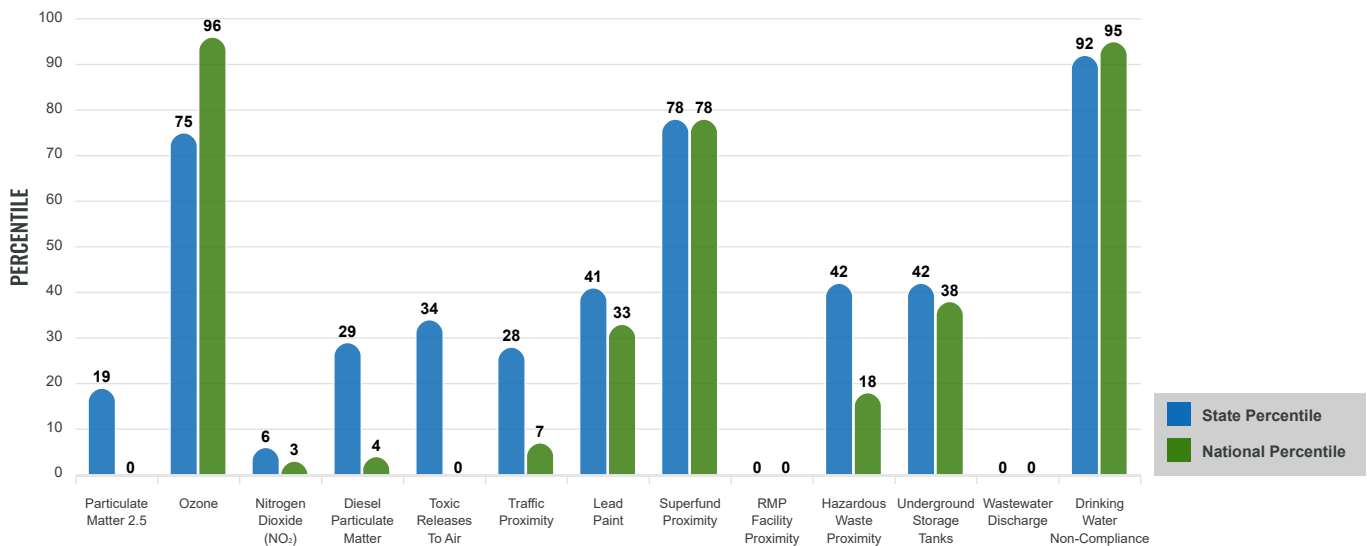
EJ INDEXES FOR THE SELECTED LOCATION



SUPPLEMENTAL INDEXES

The supplemental indexes offer a different perspective on community-level vulnerability. They combine data on percent low income, percent persons with disabilities, percent less than high school education, percent limited English speaking, and percent low life expectancy with a single environmental indicator.

SUPPLEMENTAL INDEXES FOR THE SELECTED LOCATION



Report for 5 miles Ring Centered at 35.518644,-108.223416

Report produced September 19, 2024 using EJScreen Version 2.3

EJScreen Environmental and Socioeconomic Indicators Data

SELECTED VARIABLES	VALUE	STATE AVERAGE	PERCENTILE IN STATE	USA AVERAGE	PERCENTILE IN USA
ENVIRONMENTAL BURDEN INDICATORS					
Particulate Matter 2.5 (µg/m ³)	4.72	6.11	8	8.45	0
Ozone (ppb)	64.3	65.3	35	61.8	68
Nitrogen Dioxide (NO ₂) (ppbv)	1.6	8.1	1	7.8	1
Diesel Particulate Matter (µg/m ³)	0.0283	0.187	14	0.191	2
Toxic Releases to Air (toxicity-weighted concentration)	0	29	15	4,600	0
Traffic Proximity (daily traffic count/distance to road)	11,000	730,000	15	1,700,000	5
Lead Paint (% Pre-1960 Housing)	0.021	0.19	28	0.3	19
Superfund Proximity (site count/km distance)	0.038	0.34	61	0.39	56
RMP Facility Proximity (facility count/km distance)	0	0.2	0	0.57	0
Hazardous Waste Proximity (facility count/km distance)	0.036	1.2	36	3.5	15
Underground Storage Tanks (count/km ²)	0.015	2.8	32	3.6	28
Wastewater Discharge (toxicity-weighted concentration/m distance)	0	990000	0	700000	0
Drinking Water Non-Compliance (points)	1.2	5.6	81	2.2	83
SOCIOECONOMIC INDICATORS					
Demographic Index USA	3.54	N/A	N/A	1.34	99
Supplemental Demographic Index USA	3.12	N/A	N/A	1.64	97
Demographic Index State	3.92	2.16	99	N/A	N/A
Supplemental Demographic Index State	2.88	1.62	95	N/A	N/A
People of Color	100%	62%	96	40%	97
Low Income	84%	39%	97	30%	98
Unemployment Rate	18%	6%	91	6%	94
Limited English Speaking Households	22%	6%	93	5%	94
Less Than High School Education	36%	14%	93	11%	95
Under Age 5	3%	5%	40	5%	34
Over Age 64	17%	20%	48	18%	53

*Diesel particulate matter index is from the EPA's Air Toxics Data Update, which is the Agency's ongoing, comprehensive evaluation of air toxics in the United States. This effort aims to prioritize air toxics, emission sources, and locations of interest for further study. It is important to remember that the air toxics data presented here provide broad estimates of health risks over geographic areas of the country, not definitive risks to specific individuals or locations. More information on the Air Toxics Data Update can be found at: <https://www.epa.gov/haps/air-toxics-data-update>.

Sites reporting to EPA within defined area:

Superfund	0
Hazardous Waste, Treatment, Storage, and Disposal Facilities	0
Water Dischargers	1
Air Pollution	0
Brownfields	0
Toxic Release Inventory	0

Other community features within defined area:

Schools	0
Hospitals	0
Places of Worship	1

Other environmental data:

Air Non-attainment	No
Impaired Waters	Yes

Selected location contains American Indian Reservation Lands*	Yes
Selected location contains a "Justice40 (CEJST)" disadvantaged community	Yes
Selected location contains an EPA IRA disadvantaged community	Yes

Report for 5 miles Ring Centered at 35.518644,-108.223416
 Report produced September 19, 2024 using EJScreen Version 2.3

EJScreen Environmental and Socioeconomic Indicators Data

HEALTH INDICATORS

INDICATOR	VALUE	STATE AVERAGE	STATE PERCENTILE	US AVERAGE	US PERCENTILE
Low Life Expectancy	23%	19%	81	20%	80
Heart Disease	9.3	5.9	97	5.8	96
Asthma	16.1	11.2	99	10.3	99
Cancer	5.2	6.1	27	6.4	25
Persons with Disabilities	16%	17.1%	49	13.7%	69

CLIMATE INDICATORS

INDICATOR	VALUE	STATE AVERAGE	STATE PERCENTILE	US AVERAGE	US PERCENTILE
Flood Risk	3%	9%	35	12%	27
Wildfire Risk	0%	58%	0	14%	0

CRITICAL SERVICE GAPS

INDICATOR	VALUE	STATE AVERAGE	STATE PERCENTILE	US AVERAGE	US PERCENTILE
Broadband Internet	75%	20%	98	13%	99
Lack of Health Insurance	20%	10%	91	9%	92
Housing Burden	No	N/A	N/A	N/A	N/A
Transportation Access Burden	Yes	N/A	N/A	N/A	N/A
Food Desert	Yes	N/A	N/A	N/A	N/A

Report for 5 miles Ring Centered at 35.518644,-108.223416

Report produced September 19, 2024 using EJScreen Version 2.3

Location: User-specified point center at 35.518644, -108.223416
 Ring (buffer): 5-miles radius
 Description: Ruby No. 1,2 NM0067

Summary of ACS Estimates		2018 - 2022
Population		561
Population Density (per sq. mile)		7
People of Color Population		559
% People of Color Population		100%
Households		193
Housing Units		258
Housing Units Built Before 1950		4
Per Capita Income		13,401
Land Area (sq. miles) (Source: SF1)		84.94
% Land Area		100%
Water Area (sq. miles) (Source: SF1)		0.10
% Water Area		0%

	2018 - 2022 ACS Estimates	Percent	MOE (±)
Population by Race			
Total	561	100%	605
Population Reporting One Race	547	98%	692
White	4	1%	13
Black	0	0%	17
American Indian	541	97%	603
Asian	0	0%	33
Pacific Islander	2	0%	13
Some Other Race	0	0%	13
Population Reporting Two or More Races	14	2%	49
Total Hispanic Population	2	0%	534
Total Non-Hispanic Population	559		
White Alone	2	0%	13
Black Alone	0	0%	17
American Indian Alone	541	97%	339
Non-Hispanic Asian Alone	0	0%	33
Pacific Islander Alone	2	0%	13
Other Race Alone	0	0%	13
Two or More Races Alone	14	2%	49
Population by Sex			
Male	288	51%	380
Female	273	49%	263
Population by Age			
Age 0-4	17	3%	26
Age 0-17	120	21%	239
Age 18+	440	79%	206
Age 65+	94	17%	58

Data Note: Detail may not sum to totals due to rounding. Hispanic population can be of any race.

N/A means not available. **Source:** U.S. Census Bureau, American Community Survey (ACS) 2018 - 2022

Location: User-specified point center at 35.518644, -108.223416

Ring (buffer): 5-miles radius

Description: Ruby No. 1,2 NM0067

	2018 - 2022 ACS Estimates	Percent	MOE (±)
Population 25+ by Educational Attainment			
Total	383	100%	235
Less than 9th Grade	52	14%	52
9th - 12th Grade, No Diploma	86	23%	62
High School Graduate	148	39%	120
Some College, No Degree	63	16%	50
Associate Degree	15	4%	32
Bachelor's Degree or more	18	5%	41
Population Age 5+ Years by Ability to Speak English			
Total	543	100%	605
Speak only English	148	27%	450
Non-English at Home ¹⁺²⁺³⁺⁴	396	73%	198
¹ Speak English "very well"	291	53%	162
² Speak English "well"	69	13%	108
³ Speak English "not well"	32	6%	73
⁴ Speak English "not at all"	4	1%	45
³⁺⁴ Speak English "less than well"	37	7%	85
²⁺³⁺⁴ Speak English "less than very well"	105	19%	137
Limited English Speaking Households*			
Total	43	100%	44
Speak Spanish	0	0%	13
Speak Other Indo-European Languages	0	0%	13
Speak Asian-Pacific Island Languages	0	0%	13
Speak Other Languages	43	100%	38
Households by Household Income			
Household Income Base	193	100%	116
< \$15,000	68	35%	47
\$15,000 - \$25,000	41	21%	76
\$25,000 - \$50,000	44	23%	38
\$50,000 - \$75,000	20	10%	52
\$75,000 +	20	11%	40
Occupied Housing Units by Tenure			
Total	193	100%	116
Owner Occupied	177	92%	107
Renter Occupied	16	8%	20
Employed Population Age 16+ Years			
Total	457	100%	375
In Labor Force	161	35%	192
Civilian Unemployed in Labor Force	28	17%	81
Not In Labor Force	296	65%	210

Data Note: Detail may not sum to totals due to rounding. Hispanic population can be of anyrace.

N/A means not available. **Source:** U.S. Census Bureau, American Community Survey (ACS)

*Households in which no one 14 and over speaks English "very well" or speaks English only.

Location: User-specified point center at 35.518644, -108.223416

Ring (buffer): 5-miles radius

Description: Ruby No. 1,2 NM0067

	2018 - 2022 ACS Estimates	Percent	MOE (±)
Population by Language Spoken at Home*			
Total (persons age 5 and above)	N/A	N/A	N/A
English	N/A	N/A	N/A
Spanish	N/A	N/A	N/A
French, Haitian, or Cajun	N/A	N/A	N/A
German or other West Germanic	N/A	N/A	N/A
Russian, Polish, or Other Slavic	N/A	N/A	N/A
Other Indo-European	N/A	N/A	N/A
Korean	N/A	N/A	N/A
Chinese (including Mandarin, Cantonese)	N/A	N/A	N/A
Vietnamese	N/A	N/A	N/A
Tagalog (including Filipino)	N/A	N/A	N/A
Other Asian and Pacific Island	N/A	N/A	N/A
Arabic	N/A	N/A	N/A
Other and Unspecified	N/A	N/A	N/A
Total Non-English	N/A	N/A	N/A

Data Note: Detail may not sum to totals due to rounding. Hispanic population can be of any race.
 N/A means not available. **Source:** U.S. Census Bureau, American Community Survey (ACS) 2018 - 2022.
 *Population by Language Spoken at Home is available at the census tract summary level and up.