

ABANDONED OR INACTIVE URANIUM  
MINES IN NEW MEXICO

A report of investigation carried out  
between August 1979 and May 1980 under  
contract with the New Mexico Energy and  
Minerals Department.

by

Orin J. Anderson

New Mexico Bureau of Mines and  
Mineral Resources  
Open-File Report 148

## INTRODUCTION

During the course of this investigation approximately 200 uranium mine sites were visited. Although these sites are distributed throughout 20 counties the majority are in McKinley, San Juan, and Valencia Counties, along the western and southern margin of the San Juan Basin. Other counties with an appreciable number of sites are Grant, Rio Arriba, Sandoval, Sierra, and Socorro.

Field work commenced in August, 1979 and extended although not continuously, into May, 1980. Information obtained during the on-site visits included location, type and size of mine, condition of mine, host formation, dimensions of remaining structures, proximity to residences or villages, water quality data, and radiation levels, although a gamma ray scintillometer was not obtained for the project until October 20, 1979. An effort was made to contact landowners whenever and wherever possible, however, no systematic attempt was made to determine land and mineral ownership during this phase of the investigation.

Mine operation data has been included where available. This consists of information on ore grades, production history mineralogy, and mine operator. Old publications of the U.S. AEC and the State Mine Inspectors office were helpful in this area.

The mine reports are arranged alphabetically by county with each county having its own index. A NM- or AZ-mine identification number is given with each mine name in the index. It is an AML numbering system devised by Don Baker, Jr. The first part of this

identification number is based on a U.S. Soil Conservation Service numbering system of 15' quadrangles beginning with 1 in the northwest corner of the state to 24 in the northeast corner, then returning to the western border to start a new tier. The second part refers to a 7½' quad within the 15' quad; these are numbered counterclockwise from 1 in the NE quadrant to 4 in the SE. The last part of the number refers to a particular mine within the 7½' quad. An AZ- prefix indicates the 15' quadrangle is an Arizona quad that overlaps the New Mexico state boundary.

Acknowledgments - The writer wishes to thank the following people for their valuable assistance in the field: Lars (Skip) Skotte, Richard Chamberlin, JoAnne Osburn, Mary Ann Anderson, and Cheryl Kyllonen.

A special thanks is extended to Mr. William Chenoweth of the U.S. Department of Energy, both for his time in the field as well as the claim maps and A.E.C. mine production records he provided. Mr. John Blagbrough provided helpful information about the Chuska district. The editorial assistance of Wyatt Brewster and Lars (Skip) Skotte is gratefully acknowledged.

The help and cooperation of the Navajo Tribe Office in Window Rock, Arizona permitted a statewide investigation to be completed; a note of thanks goes to Mr. R. Zaman and Mr. William Armstrong of that office.

Quad: Bread Springs 7½'

1. NM-146-2-1 Page 33  
Diamond 2 (Largo)

Quad: Church Rock 7½'

1. NM-122-4-1 Page 39  
CD & S (Sec. 35)
2. NM-122-4-2 Page 41  
Foutz #3 (Yellow Jacket)
3. NM-122-4-3 Page 45.  
Foutz 1 and 2
4. NM-122-4-4 Page 48  
William and Reynolds
5. NM-122-4-5 Page 50  
Christenson (Rimrock #2)
6. NM-122-4-6 Page 58  
Santa Fe Christensen (Rimrock #1)

Quad: Dos Lomas 7½'

1. NM-149-4-1 Page 62  
Isabella
2. NM-149-4-2 Page 67  
Spencer Shaft (Centennial)
3. NM-149-4-3 Page 69  
Hogan
4. NM-149-4-4 Page 74  
Gossett Incline (Beacon Hill #23)

|     |                                 |                       |
|-----|---------------------------------|-----------------------|
| 5.  | NM-149-4-5                      | Page 78 <sup>77</sup> |
|     | Blue Peak (Garcia 1)            |                       |
| 6.  | NM 149-4-6                      | Page 84 <sup>83</sup> |
|     | Mesa Top 7 & 18 (Malpais Raise) |                       |
| 7.  | NM-149-4-7                      | Page 93 <sup>92</sup> |
|     | Dog Incline (Dog and Flea)      |                       |
| 8.  | NM-149-4-8                      | Page 99 <sup>98</sup> |
|     | Marquez                         |                       |
| 9.  | NM-149-4-9                      | Page 104              |
|     | Faith (Westvaco) (Sec. 29)      |                       |
| 10. | NM-149-4-10                     | Page 109              |
|     | Barbara J #3                    |                       |
| 11. | NM-149-4-11                     | Page 112              |
|     | Barbara J #1                    |                       |
| 12. | NM-149-4-12                     | Page 114              |
|     | Baily and Fife (Rimrock)        |                       |
| 13. | NM-149-4-13                     | Page 117              |
|     | T-20 Shaft (T-9 ore body)       |                       |
| 14. | NM-149-4-14                     | Page 120              |
|     | Flat Top (Flat Top #3 & 4)      |                       |
| 15. | NM-149-4-15                     | Page 124 ✓            |
|     | Roundy Shaft (Rimrock)          |                       |
| 16. | NM-149-4-16                     | Page 126              |
|     | SW $\frac{1}{4}$ 30 Strip       |                       |
| 17. | NM-149-4-17                     | Page 131              |
|     | Sec. 25 Strip Complex           |                       |

|     |   |          |
|-----|---|----------|
| 18. | NM-149-4-18                                       | Page 141 |
|     | Sec. 25 Shaft                                     |          |
| 19. | NM-149-4-19                                       | Page 144 |
|     | NW $\frac{1}{4}$ 25, Decline and Open Pits        |          |
| 20. | NM-149-4-20                                       | Page 149 |
|     | Hanosh  |          |
| 21. | NM-149-4-21                                       | Page 152 |
|     | Sec. 23 and 26 Open Pit                           |          |
| 22. | NM-149-4-22                                       | Page 156 |
|     | NE $\frac{1}{4}$ Sec. 36 (Rimrock) Homer Scriven) |          |
| 23. | NM-149-4-23                                       | Page 160 |
|     | Sec. 31 Open Pit                                  |          |
| 24. | NM-149-4-24                                       | Page 163 |
|     | Moe No. 4 (Sec. 32)                               |          |
| 25. | NM-149-4-25                                       | Page 165 |
|     | Charlotte   |          |

\*Dos Lomas Quad reports #26 - #35 found under Valencia County

Quad: Gallup East 7 $\frac{1}{2}$ '

|    |                       |          |
|----|-----------------------|----------|
| 1. | NM-122-3-1            | Page 167 |
|    | Hogback (Hogback 3-5) |          |
| 2. | NM-122-3-2            | Page 171 |
|    | Becenti               |          |

Quad: Goat Mountain 7 $\frac{1}{2}$ '

|    |                                |          |
|----|--------------------------------|----------|
| 1. | NM-149-2-1                     | Page 174 |
|    | Kermac Sec. 10 (Kermac No. 10) |          |

Date visited 1/16/80

Mine name(s) Barbara J #3 County McKinley

Section C. N $\frac{1}{2}$  N $\frac{1}{2}$  NE $\frac{1}{4}$  30 Twnsh. 13 N R. 9 W

Quadrangle sheet Dos Lomas 7 $\frac{1}{2}$ '

Mining district Poison Canyon Trend

Elevation 6,940'

Nearest city and/or dwellings Ambrosia Lake junction, 4 miles by road, northeast.

The Barbara J #3 is located about  $\frac{1}{2}$  mile northeast of Todilto Exploration and Developments Piedra Triste Mine (Dalco Shaft). The sign identifying Midcontinent Uranium Corporation as the operator still stands on approach to the mine site.

The mine consists of a 5' x 6' vertical shaft, probably 300'-400' deep, that is presently covered rather crudely with several pieces of  $\frac{1}{2}$  inch plate metal (see photo a). A 20' high 30" diameter ventilation stack is present 25' southwest of the shaft; it is not known what type of cover if any rests at the top. A smaller diameter vent pipe protrudes from the shaft cover, but has a right angle bend to discharge horizontally (see again photo a). The mine shaft itself is still visible through cracks in the cover, and a ladder which looks serviceable is in place; shaft was not entered during investigation.

The mine dump area lies immediately to south of shaft and measures approximately 200' x 120', with a maximum height of about 20' (see photo b). Scintillometer readings on dump were generally about 700 cps, but on the upper surface, northward toward the mine shaft readings up to 1,700 were recorded.

A small 4' x 4' shaft structure with a wooden collar was found about 100' south of toe of dump (photo c). Purpose of shaft, which is now backfilled, is not clear, but could have been a ventilation shaft.

The Barbara J #3 produced from several medium and small deposits in the Todilto limestone. The mine was worked from 1959 to 1963 (Hilpert, 1969).

- References:
- (1) Hilpert, L., 1969, Uranium Resources of NW New Mexico, U.S.G.S., Prof. Paper 603, p. 35.
  - (2) Hilpert, L., 1965, Uranium, in Mineral and Water Resources of New Mexico: New Mexico Bur. of Mines and Mineral Resources, Bull. 87, p. 214.
  - (3) Field notes, 1/16/80.



Photo A Looking southwest at covered shaft site at left of person, and 30" diameter ventilation shaft in background.

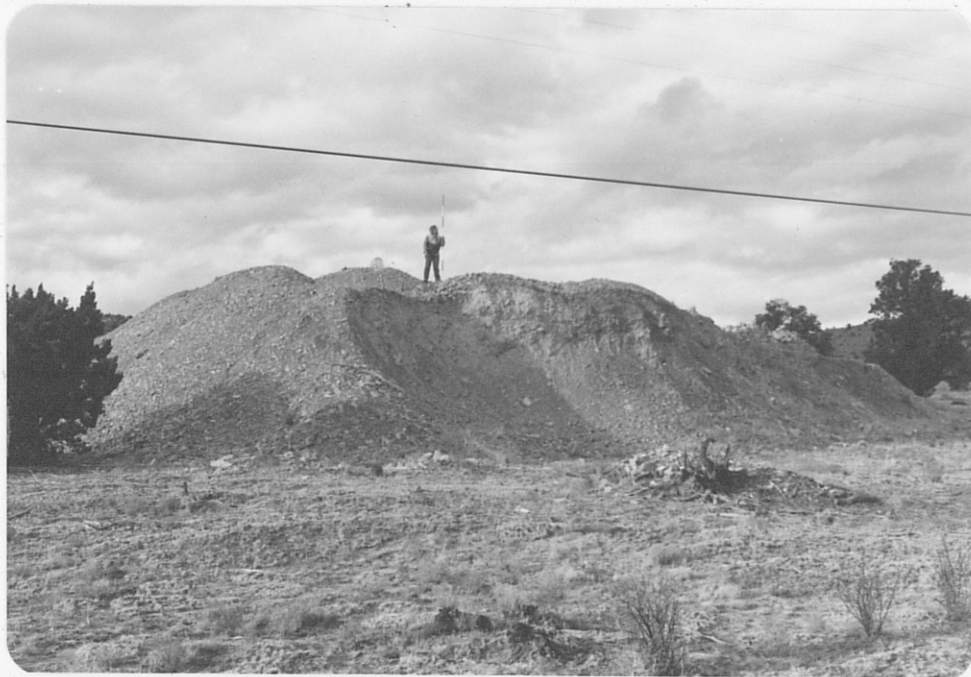


Photo B Looking northward at mine dump, here nearly 20' high; upper surface slopes gently to north.

A 182 Mc 110



Photo C Small 4' x 4' backfilled shaft with wooden collar about 100' south of mine dump.