



EJScreen Community Report

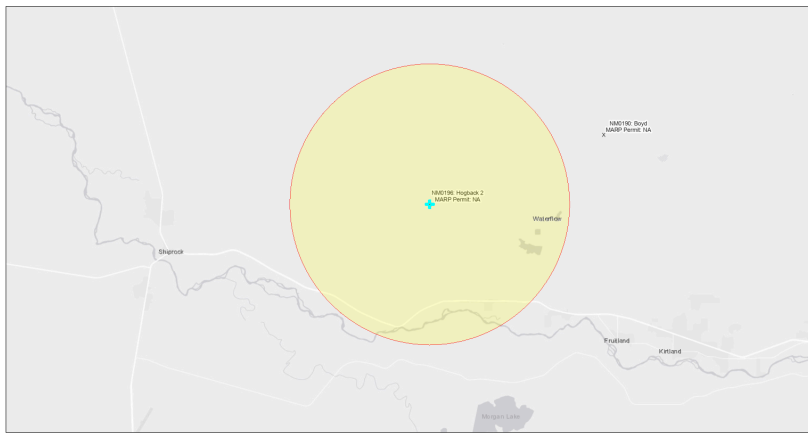
This report provides environmental and socioeconomic information for user-defined areas, and combines that data into environmental justice and supplemental indexes.

Hogback 2 NM0196

5 miles Ring Centered at 36.809834,-108.516769

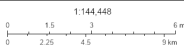
Population: 1,622

Area in square miles: 78.53



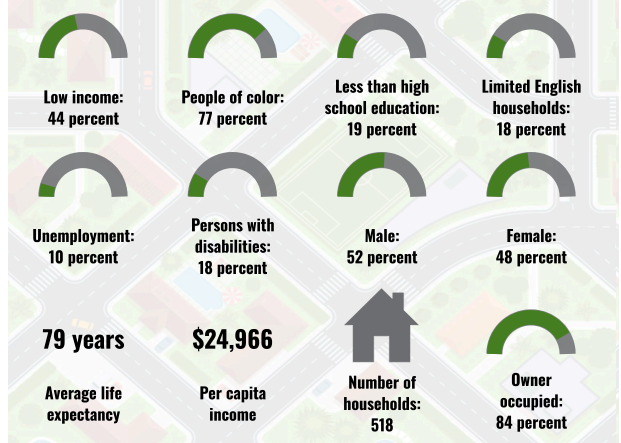
September 25, 2024

Hogback 2 NM0196
* Abandoned Uranium Mines

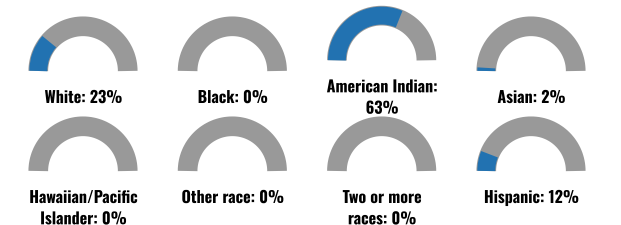


San Juan County, NM, Bureau of Land Management, Esri, HERE, Garmin, IGN, EPA, SPC, SeaView, Energy Minerals and Natural Resources Department, Esri, HERE, SPC

COMMUNITY INFORMATION



BREAKDOWN BY RACE



BREAKDOWN BY AGE



LIMITED ENGLISH SPEAKING BREAKDOWN



Notes: Numbers may not sum to totals due to rounding. Hispanic population can be of any race. Source: U.S. Census Bureau, American Community Survey (ACS) 2018-2022. Life expectancy data comes from the Centers for Disease Control.

LANGUAGES SPOKEN AT HOME

LANGUAGE	PERCENT
English	53%
Spanish	2%
Korean	1%
Other Asian and Pacific Island	1%
Other and Unspecified	43%
Total Non-English	47%

Report for 5 miles Ring Centered at 36.809834,-108.516769

Report produced September 25, 2024 using EJScreen Version 2.3

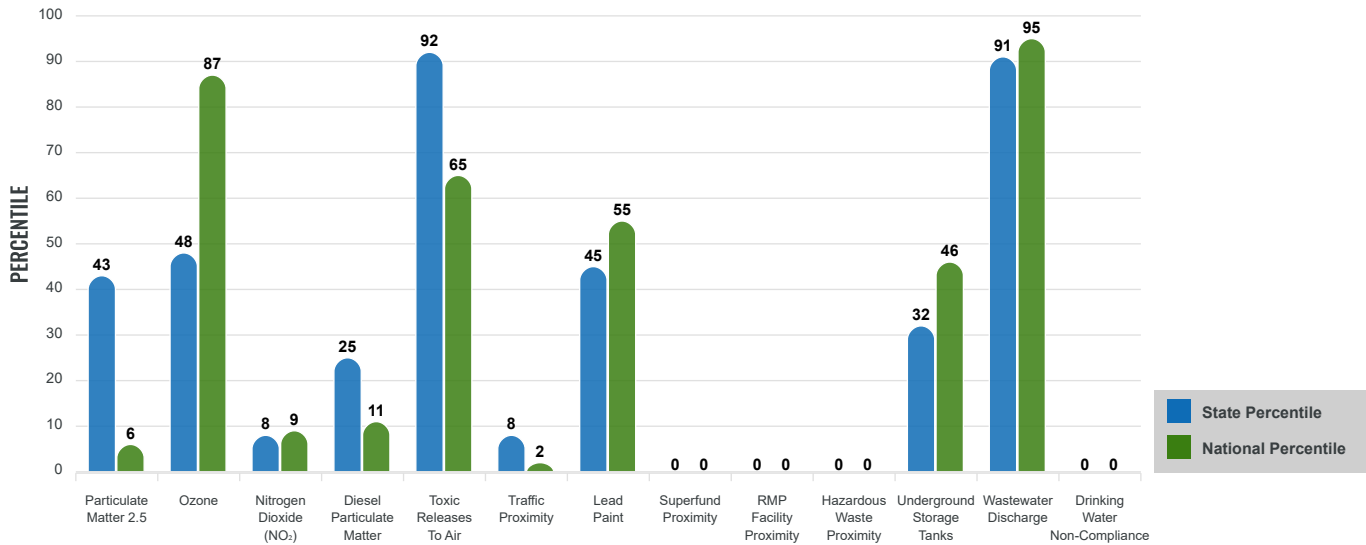
Environmental Justice & Supplemental Indexes

The environmental justice and supplemental indexes are a combination of environmental and socioeconomic information. There are thirteen EJ indexes and supplemental indexes in EJScreen reflecting the 13 environmental indicators. The indexes for a selected area are compared to those for all other locations in the state or nation. For more information and calculation details on the EJ and supplemental indexes, please visit the [EJScreen website](#).

EJ INDEXES

The EJ indexes help users screen for potential EJ concerns. To do this, the EJ index combines data on low income and people of color populations with a single environmental indicator.

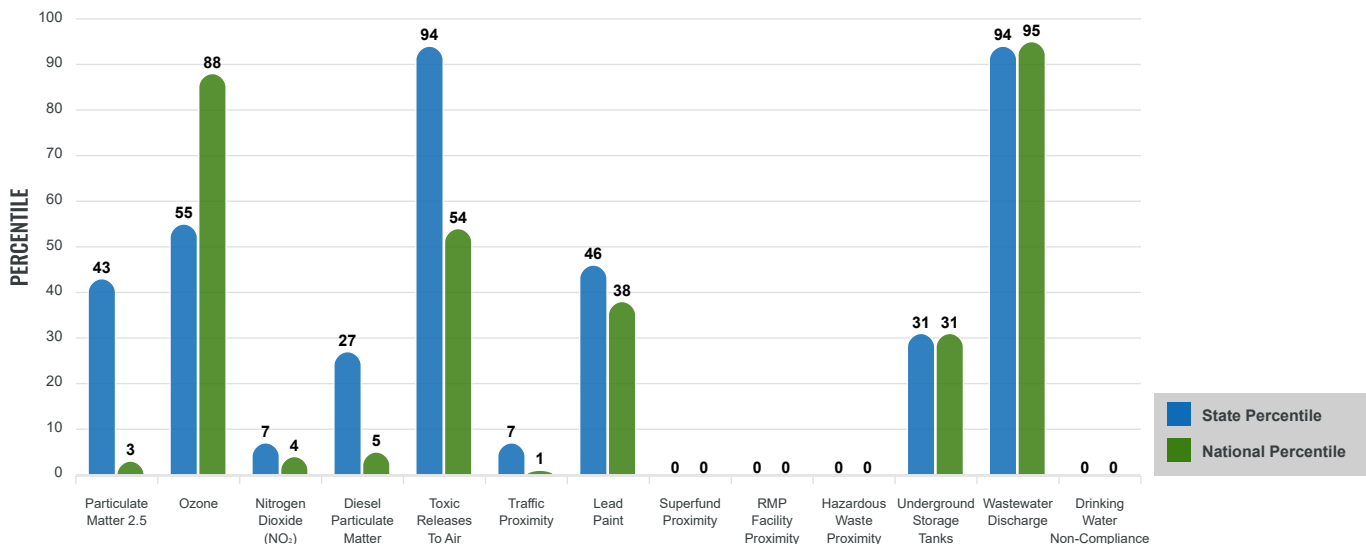
EJ INDEXES FOR THE SELECTED LOCATION



SUPPLEMENTAL INDEXES

The supplemental indexes offer a different perspective on community-level vulnerability. They combine data on percent low income, percent persons with disabilities, percent less than high school education, percent limited English speaking, and percent low life expectancy with a single environmental indicator.

SUPPLEMENTAL INDEXES FOR THE SELECTED LOCATION



Report for 5 miles Ring Centered at 36.809834,-108.516769

Report produced September 25, 2024 using EJScreen Version 2.3

EJScreen Environmental and Socioeconomic Indicators Data

SELECTED VARIABLES	VALUE	STATE AVERAGE	PERCENTILE IN STATE	USA AVERAGE	PERCENTILE IN USA
ENVIRONMENTAL BURDEN INDICATORS					
Particulate Matter 2.5 (µg/m ³)	5.46	6.11	33	8.45	2
Ozone (ppb)	64.6	65.3	37	61.8	69
Nitrogen Dioxide (NO ₂) (ppbv)	2.3	8.1	5	7.8	2
Diesel Particulate Matter (µg/m ³)	0.0365	0.187	18	0.191	4
Toxic Releases to Air (toxicity-weighted concentration)	340	29	99	4,600	40
Traffic Proximity (daily traffic count/distance to road)	89	730,000	7	1,700,000	1
Lead Paint (% Pre-1960 Housing)	0.042	0.19	34	0.3	25
Superfund Proximity (site count/km distance)	0	0.34	0	0.39	0
RMP Facility Proximity (facility count/km distance)	0	0.2	0	0.57	0
Hazardous Waste Proximity (facility count/km distance)	0	1.2	0	3.5	0
Underground Storage Tanks (count/km ²)	0.17	2.8	39	3.6	36
Wastewater Discharge (toxicity-weighted concentration/m distance)	57000	990000	94	700000	96
Drinking Water Non-Compliance (points)	0	5.6	0	2.2	0
SOCIOECONOMIC INDICATORS					
Demographic Index USA	2.27	N/A	N/A	1.34	83
Supplemental Demographic Index USA	2.26	N/A	N/A	1.64	83
Demographic Index State	2.59	2.16	65	N/A	N/A
Supplemental Demographic Index State	2.03	1.62	73	N/A	N/A
People of Color	77%	62%	69	40%	81
Low Income	44%	39%	59	30%	75
Unemployment Rate	10%	6%	77	6%	83
Limited English Speaking Households	18%	6%	90	5%	92
Less Than High School Education	19%	14%	72	11%	80
Under Age 5	4%	5%	54	5%	48
Over Age 64	16%	20%	43	18%	48

*Diesel particulate matter index is from the EPA's Air Toxics Data Update, which is the Agency's ongoing, comprehensive evaluation of air toxics in the United States. This effort aims to prioritize air toxics, emission sources, and locations of interest for further study. It is important to remember that the air toxics data presented here provide broad estimates of health risks over geographic areas of the country, not definitive risks to specific individuals or locations. More information on the Air Toxics Data Update can be found at: <https://www.epa.gov/haps/air-toxics-data-update>.

Sites reporting to EPA within defined area:

Superfund	0
Hazardous Waste, Treatment, Storage, and Disposal Facilities	0
Water Dischargers	16
Air Pollution	4
Brownfields	0
Toxic Release Inventory	2

Other community features within defined area:

Schools	0
Hospitals	0
Places of Worship	0

Other environmental data:

Air Non-attainment	No
Impaired Waters	Yes

Selected location contains American Indian Reservation Lands*	Yes
Selected location contains a "Justice40 (CEJST)" disadvantaged community	Yes
Selected location contains an EPA IRA disadvantaged community	Yes

Report for 5 miles Ring Centered at 36.809834,-108.516769
 Report produced September 25, 2024 using EJScreen Version 2.3

EJScreen Environmental and Socioeconomic Indicators Data

HEALTH INDICATORS

INDICATOR	VALUE	STATE AVERAGE	STATE PERCENTILE	US AVERAGE	US PERCENTILE
Low Life Expectancy	19%	19%	39	20%	42
Heart Disease	7.1	5.9	79	5.8	76
Asthma	13.9	11.2	94	10.3	98
Cancer	5.7	6.1	41	6.4	33
Persons with Disabilities	17.8%	17.1%	59	13.7%	77

CLIMATE INDICATORS

INDICATOR	VALUE	STATE AVERAGE	STATE PERCENTILE	US AVERAGE	US PERCENTILE
Flood Risk	13%	9%	78	12%	75
Wildfire Risk	33%	58%	35	14%	84

CRITICAL SERVICE GAPS

INDICATOR	VALUE	STATE AVERAGE	STATE PERCENTILE	US AVERAGE	US PERCENTILE
Broadband Internet	44%	20%	89	13%	97
Lack of Health Insurance	14%	10%	79	9%	82
Housing Burden	No	N/A	N/A	N/A	N/A
Transportation Access Burden	Yes	N/A	N/A	N/A	N/A
Food Desert	Yes	N/A	N/A	N/A	N/A

Report for 5 miles Ring Centered at 36.809834,-108.516769

Report produced September 25, 2024 using EJScreen Version 2.3

Location: User-specified point center at 36.809834, -108.516769
 Ring (buffer): 5-miles radius
 Description: Hogback 2 NM0196

Summary of ACS Estimates		2018 - 2022
Population		1,622
Population Density (per sq. mile)		19
People of Color Population		1,255
% People of Color Population		77%
Households		518
Housing Units		670
Housing Units Built Before 1950		20
Per Capita Income		24,966
Land Area (sq. miles) (Source: SF1)		83.33
% Land Area		100%
Water Area (sq. miles) (Source: SF1)		0.41
% Water Area		0%

	2018 - 2022 ACS Estimates	Percent	MOE (±)
Population by Race			
Total	1,622	100%	381
Population Reporting One Race	1,614	99%	812
White	383	24%	275
Black	0	0%	13
American Indian	1,121	69%	385
Asian	37	2%	51
Pacific Islander	0	0%	13
Some Other Race	73	4%	75
Population Reporting Two or More Races	9	1%	62
Total Hispanic Population	193	12%	149
Total Non-Hispanic Population	1,430		
White Alone	367	23%	261
Black Alone	0	0%	13
American Indian Alone	1,021	63%	385
Non-Hispanic Asian Alone	37	2%	51
Pacific Islander Alone	0	0%	13
Other Race Alone	0	0%	13
Two or More Races Alone	5	0%	56
Population by Sex			
Male	848	52%	207
Female	775	48%	249
Population by Age			
Age 0-4	72	4%	51
Age 0-17	353	22%	127
Age 18+	1,269	78%	236
Age 65+	253	16%	148

Data Note: Detail may not sum to totals due to rounding. Hispanic population can be of any race.

N/A means not available. **Source:** U.S. Census Bureau, American Community Survey (ACS) 2018 - 2022

Location: User-specified point center at 36.809834, -108.516769
 Ring (buffer): 5-miles radius
 Description: Hogback 2 NM0196

	2018 - 2022 ACS Estimates	Percent	MOE (±)
Population 25+ by Educational Attainment			
Total	1,153	100%	268
Less than 9th Grade	76	7%	63
9th - 12th Grade, No Diploma	144	12%	78
High School Graduate	349	30%	131
Some College, No Degree	353	31%	113
Associate Degree	154	13%	62
Bachelor's Degree or more	77	7%	169
Population Age 5+ Years by Ability to Speak English			
Total	1,550	100%	367
Speak only English	808	52%	278
Non-English at Home ¹⁺²⁺³⁺⁴	742	48%	180
¹ Speak English "very well"	463	30%	140
² Speak English "well"	211	14%	78
³ Speak English "not well"	63	4%	66
⁴ Speak English "not at all"	5	0%	45
³⁺⁴ Speak English "less than well"	68	4%	79
²⁺³⁺⁴ Speak English "less than very well"	279	18%	100
Limited English Speaking Households*			
Total	96	100%	52
Speak Spanish	0	0%	13
Speak Other Indo-European Languages	0	0%	13
Speak Asian-Pacific Island Languages	34	36%	47
Speak Other Languages	62	64%	25
Households by Household Income			
Household Income Base	518	100%	129
< \$15,000	69	13%	121
\$15,000 - \$25,000	64	12%	40
\$25,000 - \$50,000	155	30%	66
\$50,000 - \$75,000	68	13%	59
\$75,000 +	162	31%	113
Occupied Housing Units by Tenure			
Total	518	100%	129
Owner Occupied	434	84%	130
Renter Occupied	84	16%	54
Employed Population Age 16+ Years			
Total	1,326	100%	311
In Labor Force	690	52%	241
Civilian Unemployed in Labor Force	68	10%	84
Not In Labor Force	636	48%	200

Data Note: Detail may not sum to totals due to rounding. Hispanic population can be of anyrace.

N/A means not available. **Source:** U.S. Census Bureau, American Community Survey (ACS)

*Households in which no one 14 and over speaks English "very well" or speaks English only.

Location: User-specified point center at 36.809834, -108.516769

Ring (buffer): 5-miles radius

Description: Hogback 2 NM0196

	2018 - 2022 ACS Estimates	Percent	MOE (±)
Population by Language Spoken at Home*			
Total (persons age 5 and above)	1,538	100%	400
English	812	53%	334
Spanish	34	2%	57
French, Haitian, or Cajun	1	0%	13
German or other West Germanic	0	0%	13
Russian, Polish, or Other Slavic	1	0%	13
Other Indo-European	0	0%	13
Korean	10	1%	35
Chinese (including Mandarin, Cantonese)	0	0%	13
Vietnamese	0	0%	13
Tagalog (including Filipino)	0	0%	13
Other Asian and Pacific Island	19	1%	51
Arabic	1	0%	13
Other and Unspecified	661	43%	199
Total Non-English	726	47%	521

Data Note: Detail may not sum to totals due to rounding. Hispanic population can be of any race.
N/A means not available. **Source:** U.S. Census Bureau, American Community Survey (ACS) 2018 - 2022.
*Population by Language Spoken at Home is available at the census tract summary level and up.