



EJScreen Community Report

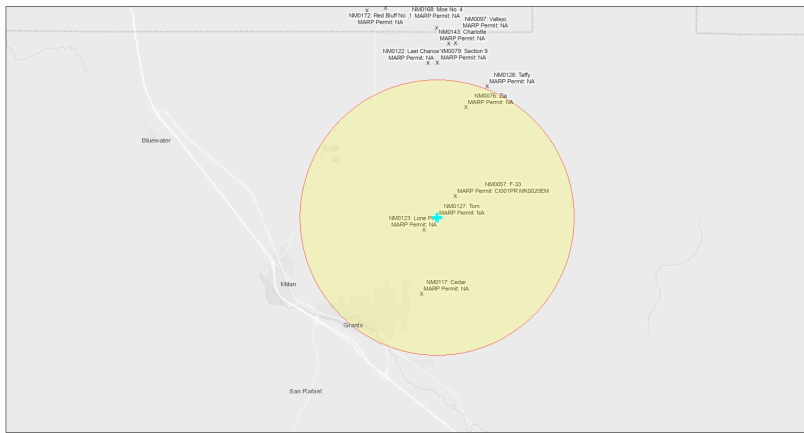
This report provides environmental and socioeconomic information for user-defined areas, and combines that data into environmental justice and supplemental indexes.

Tom NM0127

5 miles Ring Centered at 35.207057,-107.795620

Population: 9,120

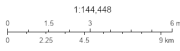
Area in square miles: 78.53



September 23, 2024

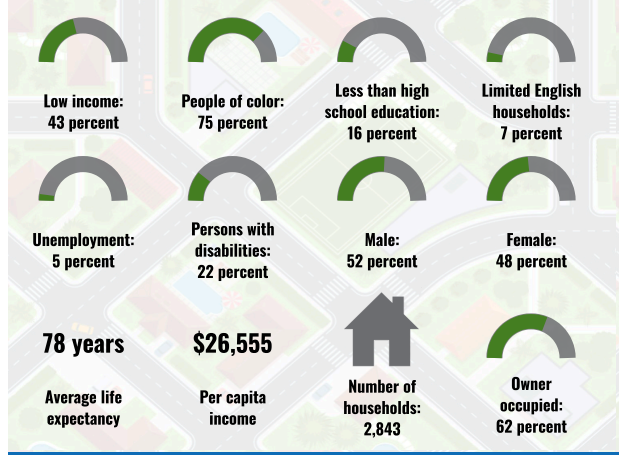
Tom NM0127

* Abandoned Uranium Mines

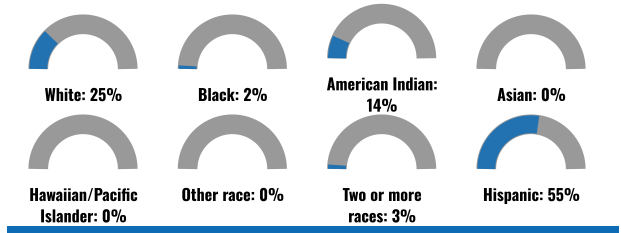


Bureau of Land Management, EPA, HERS, Geomix, USGS, BIA, IHS, New Mexico Energy, Storage and Natural Resources Department, etc, HERS, IHS

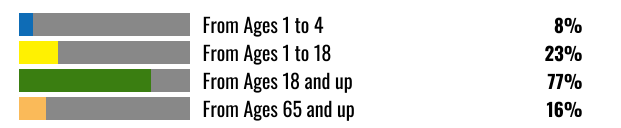
COMMUNITY INFORMATION



BREAKDOWN BY RACE



BREAKDOWN BY AGE



LIMITED ENGLISH SPEAKING BREAKDOWN



LANGUAGES SPOKEN AT HOME

LANGUAGE	PERCENT
English	58%
Spanish	35%
Other and Unspecified	7%
Total Non-English	42%

Notes: Numbers may not sum to totals due to rounding. Hispanic population can be of any race. Source: U.S. Census Bureau, American Community Survey (ACS) 2018-2022. Life expectancy data comes from the Centers for Disease Control.

Report for 5 miles Ring Centered at 35.207057,-107.795620
Report produced September 23, 2024 using EJScreen Version 2.3

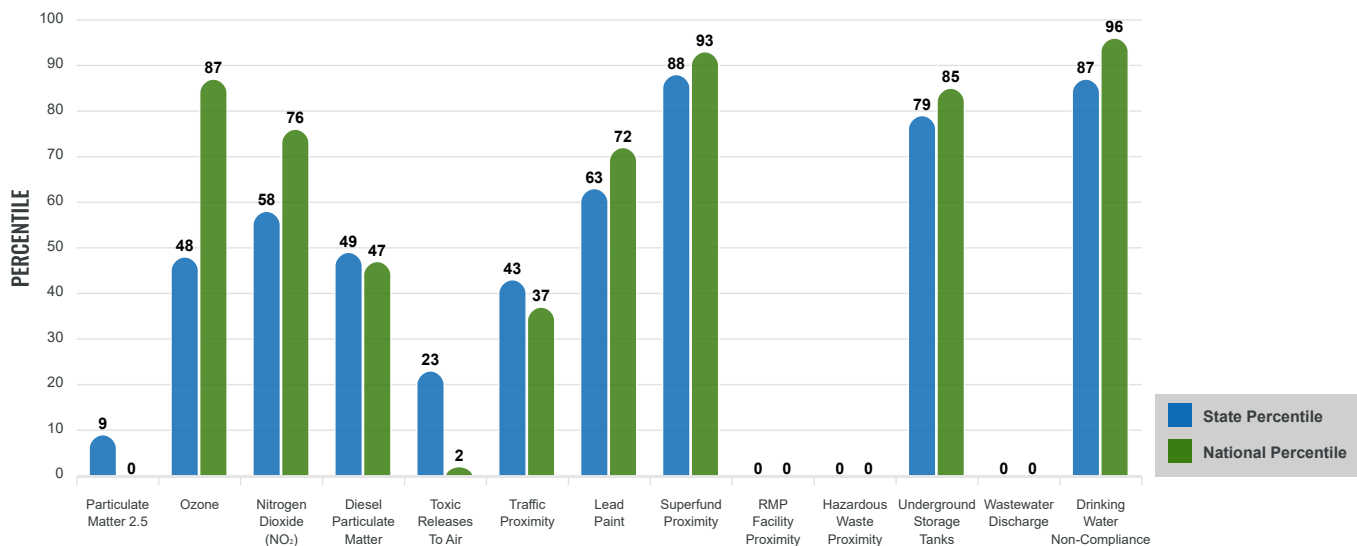
Environmental Justice & Supplemental Indexes

The environmental justice and supplemental indexes are a combination of environmental and socioeconomic information. There are thirteen EJ indexes and supplemental indexes in EJScreen reflecting the 13 environmental indicators. The indexes for a selected area are compared to those for all other locations in the state or nation. For more information and calculation details on the EJ and supplemental indexes, please visit the [EJScreen website](#).

EJ INDEXES

The EJ indexes help users screen for potential EJ concerns. To do this, the EJ index combines data on low income and people of color populations with a single environmental indicator.

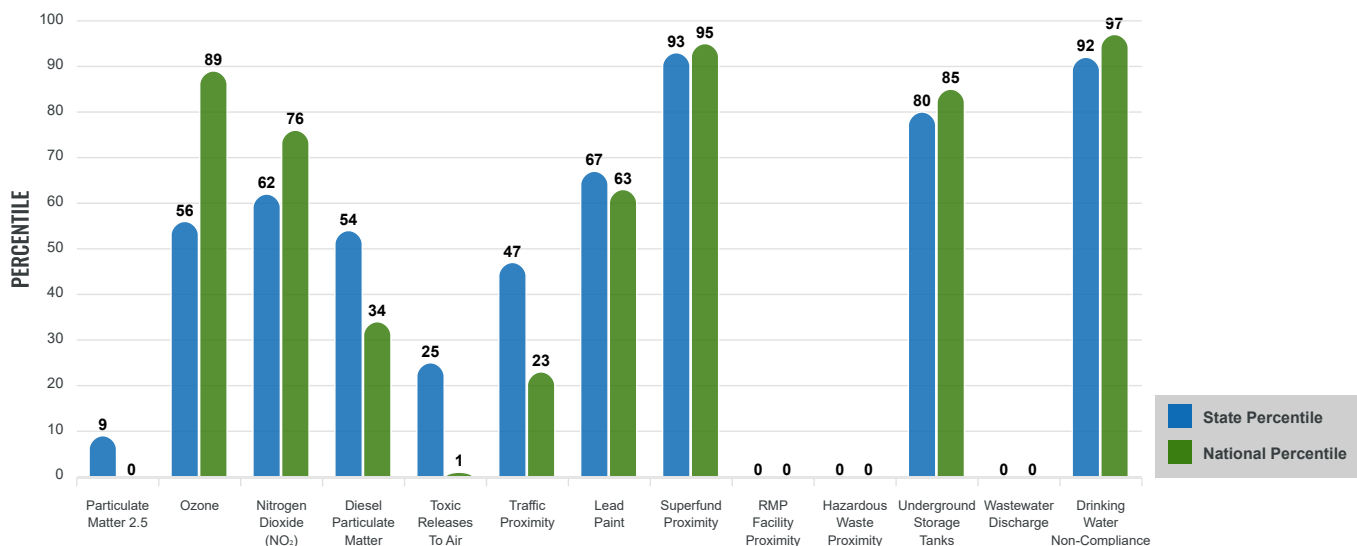
EJ INDEXES FOR THE SELECTED LOCATION



SUPPLEMENTAL INDEXES

The supplemental indexes offer a different perspective on community-level vulnerability. They combine data on percent low income, percent persons with disabilities, percent less than high school education, percent limited English speaking, and percent low life expectancy with a single environmental indicator.

SUPPLEMENTAL INDEXES FOR THE SELECTED LOCATION



Report for 5 miles Ring Centered at 35.207057,-107.795620

Report produced September 23, 2024 using EJScreen Version 2.3

EJScreen Environmental and Socioeconomic Indicators Data

SELECTED VARIABLES	VALUE	STATE AVERAGE	PERCENTILE IN STATE	USA AVERAGE	PERCENTILE IN USA
ENVIRONMENTAL BURDEN INDICATORS					
Particulate Matter 2.5 (µg/m ³)	4.65	6.11	6	8.45	0
Ozone (ppb)	64.6	65.3	36	61.8	69
Nitrogen Dioxide (NO ₂) (ppbv)	7.8	8.1	41	7.8	52
Diesel Particulate Matter (µg/m ³)	0.0778	0.187	39	0.191	19
Toxic Releases to Air (toxicity-weighted concentration)	0.12	29	31	4,600	3
Traffic Proximity (daily traffic count/distance to road)	68,000	730,000	32	1,700,000	14
Lead Paint (% Pre-1960 Housing)	0.17	0.19	62	0.3	45
Superfund Proximity (site count/km distance)	2	0.34	96	0.39	95
RMP Facility Proximity (facility count/km distance)	0	0.2	0	0.57	0
Hazardous Waste Proximity (facility count/km distance)	0	1.2	0	3.5	0
Underground Storage Tanks (count/km ²)	5.5	2.8	85	3.6	81
Wastewater Discharge (toxicity-weighted concentration/m distance)	0	990000	0	700000	0
Drinking Water Non-Compliance (points)	15	5.6	88	2.2	97
SOCIOECONOMIC INDICATORS					
Demographic Index USA	2.18	N/A	N/A	1.34	81
Supplemental Demographic Index USA	2.28	N/A	N/A	1.64	83
Demographic Index State	2.49	2.16	61	N/A	N/A
Supplemental Demographic Index State	2.01	1.62	73	N/A	N/A
People of Color	75%	62%	65	40%	80
Low Income	43%	39%	58	30%	74
Unemployment Rate	5%	6%	54	6%	59
Limited English Speaking Households	7%	6%	72	5%	80
Less Than High School Education	16%	14%	67	11%	75
Under Age 5	8%	5%	76	5%	74
Over Age 64	16%	20%	44	18%	49

*Diesel particulate matter index is from the EPA's Air Toxics Data Update, which is the Agency's ongoing, comprehensive evaluation of air toxics in the United States. This effort aims to prioritize air toxics, emission sources, and locations of interest for further study. It is important to remember that the air toxics data presented here provide broad estimates of health risks over geographic areas of the country, not definitive risks to specific individuals or locations. More information on the Air Toxics Data Update can be found at: <https://www.epa.gov/haps/air-toxics-data-update>.

Sites reporting to EPA within defined area:

Superfund	3
Hazardous Waste, Treatment, Storage, and Disposal Facilities	0
Water Dischargers	30
Air Pollution	18
Brownfields	0
Toxic Release Inventory	0

Other community features within defined area:

Schools	7
Hospitals	1
Places of Worship	4

Other environmental data:

Air Non-attainment	No
Impaired Waters	Yes

- Selected location contains American Indian Reservation Lands* Yes
- Selected location contains a "Justice40 (CEJST)" disadvantaged community Yes
- Selected location contains an EPA IRA disadvantaged community Yes

Report for 5 miles Ring Centered at 35.207057,-107.795620
 Report produced September 23, 2024 using EJScreen Version 2.3

EJScreen Environmental and Socioeconomic Indicators Data

HEALTH INDICATORS

INDICATOR	VALUE	STATE AVERAGE	STATE PERCENTILE	US AVERAGE	US PERCENTILE
Low Life Expectancy	22%	19%	77	20%	77
Heart Disease	6.4	5.9	65	5.8	66
Asthma	11.6	11.2	73	10.3	83
Cancer	5.8	6.1	45	6.4	34
Persons with Disabilities	22.1%	17.1%	79	13.7%	90

CLIMATE INDICATORS

INDICATOR	VALUE	STATE AVERAGE	STATE PERCENTILE	US AVERAGE	US PERCENTILE
Flood Risk	9%	9%	64	12%	61
Wildfire Risk	7%	58%	31	14%	81

CRITICAL SERVICE GAPS

INDICATOR	VALUE	STATE AVERAGE	STATE PERCENTILE	US AVERAGE	US PERCENTILE
Broadband Internet	25%	20%	69	13%	86
Lack of Health Insurance	6%	10%	35	9%	44
Housing Burden	No	N/A	N/A	N/A	N/A
Transportation Access Burden	Yes	N/A	N/A	N/A	N/A
Food Desert	Yes	N/A	N/A	N/A	N/A

Report for 5 miles Ring Centered at 35.207057,-107.795620

Report produced September 23, 2024 using EJScreen Version 2.3

Location: User-specified point center at 35.207057, -107.795620
 Ring (buffer): 5-miles radius
 Description: Tom NM0127

Summary of ACS Estimates		2018 - 2022
Population		9,120
Population Density (per sq. mile)		116
People of Color Population		6,838
% People of Color Population		75%
Households		2,843
Housing Units		3,407
Housing Units Built Before 1950		151
Per Capita Income		26,555
Land Area (sq. miles) (Source: SF1)		78.46
% Land Area		100%
Water Area (sq. miles) (Source: SF1)		0.05
% Water Area		0%

	2018 - 2022 ACS Estimates	Percent	MOE (±)
Population by Race			
Total	9,120	100%	666
Population Reporting One Race	7,791	85%	1,331
White	5,288	58%	555
Black	210	2%	196
American Indian	1,473	16%	312
Asian	44	0%	62
Pacific Islander	5	0%	13
Some Other Race	772	8%	193
Population Reporting Two or More Races	1,329	15%	267
Total Hispanic Population	5,033	55%	631
Total Non-Hispanic Population	4,086		
White Alone	2,282	25%	256
Black Alone	184	2%	196
American Indian Alone	1,267	14%	271
Non-Hispanic Asian Alone	44	0%	62
Pacific Islander Alone	5	0%	13
Other Race Alone	24	0%	29
Two or More Races Alone	281	3%	105
Population by Sex			
Male	4,716	52%	415
Female	4,404	48%	377
Population by Age			
Age 0-4	695	8%	109
Age 0-17	2,127	23%	291
Age 18+	6,992	77%	419
Age 65+	1,453	16%	203

Data Note: Detail may not sum to totals due to rounding. Hispanic population can be of any race.

N/A means not available. **Source:** U.S. Census Bureau, American Community Survey (ACS) 2018 - 2022

Location: User-specified point center at 35.207057, -107.795620
 Ring (buffer): 5-miles radius
 Description: Tom NM0127

	2018 - 2022 ACS Estimates	Percent	MOE (±)
Population 25+ by Educational Attainment			
Total	6,193	100%	388
Less than 9th Grade	248	4%	83
9th - 12th Grade, No Diploma	769	12%	128
High School Graduate	1,829	30%	270
Some College, No Degree	1,614	26%	192
Associate Degree	608	10%	199
Bachelor's Degree or more	1,125	18%	257
Population Age 5+ Years by Ability to Speak English			
Total	8,424	100%	636
Speak only English	4,990	59%	401
Non-English at Home ¹⁺²⁺³⁺⁴	3,434	41%	364
¹ Speak English "very well"	2,570	31%	307
² Speak English "well"	361	4%	83
³ Speak English "not well"	416	5%	233
⁴ Speak English "not at all"	88	1%	145
³⁺⁴ Speak English "less than well"	504	6%	237
²⁺³⁺⁴ Speak English "less than very well"	865	10%	243
Limited English Speaking Households*			
Total	197	100%	74
Speak Spanish	181	92%	71
Speak Other Indo-European Languages	8	4%	13
Speak Asian-Pacific Island Languages	0	0%	13
Speak Other Languages	7	4%	60
Households by Household Income			
Household Income Base	2,843	100%	250
< \$15,000	393	14%	98
\$15,000 - \$25,000	339	12%	88
\$25,000 - \$50,000	662	23%	140
\$50,000 - \$75,000	427	15%	213
\$75,000 +	1,022	36%	248
Occupied Housing Units by Tenure			
Total	2,843	100%	250
Owner Occupied	1,766	62%	256
Renter Occupied	1,077	38%	204
Employed Population Age 16+ Years			
Total	7,131	100%	473
In Labor Force	3,507	49%	398
Civilian Unemployed in Labor Force	180	5%	104
Not In Labor Force	3,624	51%	356

Data Note: Detail may not sum to totals due to rounding. Hispanic population can be of anyrace.

N/A means not available. **Source:** U.S. Census Bureau, American Community Survey (ACS)

*Households in which no one 14 and over speaks English "very well" or speaks English only.

Location: User-specified point center at 35.207057, -107.795620

Ring (buffer): 5-miles radius

Description: Tom NM0127

	2018 - 2022 ACS Estimates	Percent	MOE (±)
Population by Language Spoken at Home*			
Total (persons age 5 and above)	8,150	100%	691
English	4,707	58%	558
Spanish	2,818	35%	582
French, Haitian, or Cajun	14	0%	33
German or other West Germanic	8	0%	19
Russian, Polish, or Other Slavic	0	0%	19
Other Indo-European	15	0%	21
Korean	0	0%	19
Chinese (including Mandarin, Cantonese)	0	0%	19
Vietnamese	0	0%	19
Tagalog (including Filipino)	12	0%	21
Other Asian and Pacific Island	0	0%	19
Arabic	0	0%	19
Other and Unspecified	575	7%	232
Total Non-English	3,443	42%	868

Data Note: Detail may not sum to totals due to rounding. Hispanic population can be of any race.
N/A means not available. **Source:** U.S. Census Bureau, American Community Survey (ACS) 2018 - 2022.
*Population by Language Spoken at Home is available at the census tract summary level and up.