



EJScreen Community Report

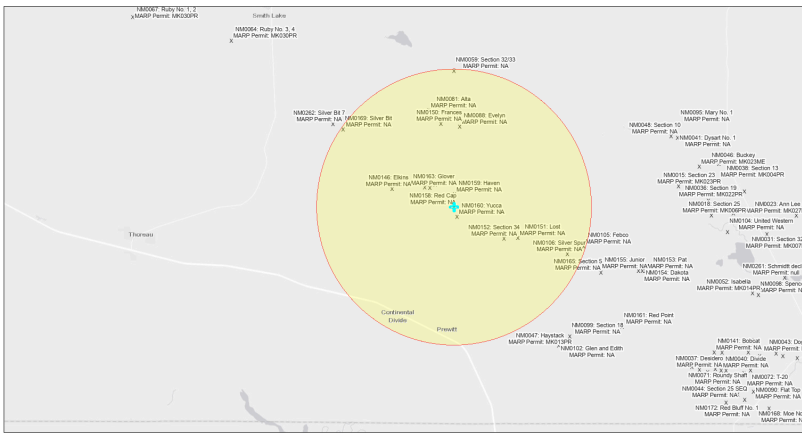
This report provides environmental and socioeconomic information for user-defined areas, and combines that data into environmental justice and supplemental indexes.

Red Cap NM0158

5 miles Ring Centered at 35.418923,-108.016232

Population: 729

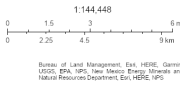
Area in square miles: 78.53



September 24, 2024

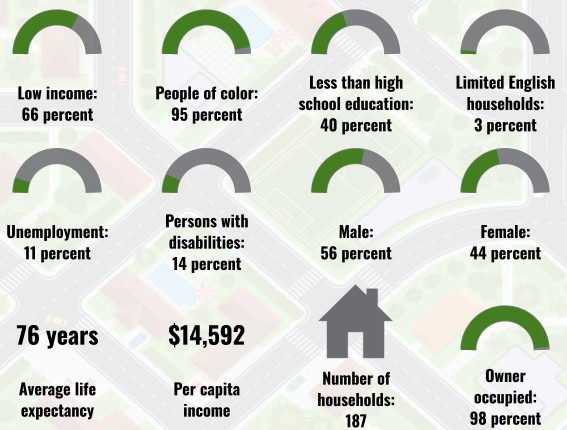
Red Cap NM0158

* Abandoned Uranium Mines

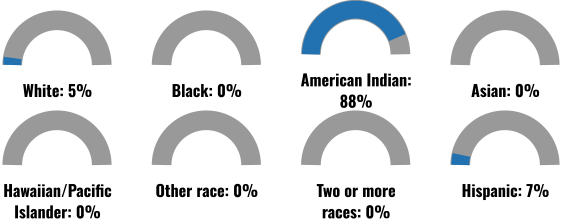


Bureau of Land Management, EPA, HERS, Genco, USGS, BPA, USFWS, New Mexico Energy, Minerals and Natural Resources Department, EPA, HERS, USFS

COMMUNITY INFORMATION



BREAKDOWN BY RACE



BREAKDOWN BY AGE



LIMITED ENGLISH SPEAKING BREAKDOWN



Notes: Numbers may not sum to totals due to rounding. Hispanic population can be of any race. Source: U.S. Census Bureau American Community Survey (ACS) 2018-2022. Life expectancy data comes from the Centers for Disease Control.

LANGUAGES SPOKEN AT HOME

LANGUAGE	PERCENT
English	31%
Other and Unspecified	69%
Total Non-English	69%

Report for 5 miles Ring Centered at 35.418923,-108.016232

Report produced September 24, 2024 using EJScreen Version 2.3

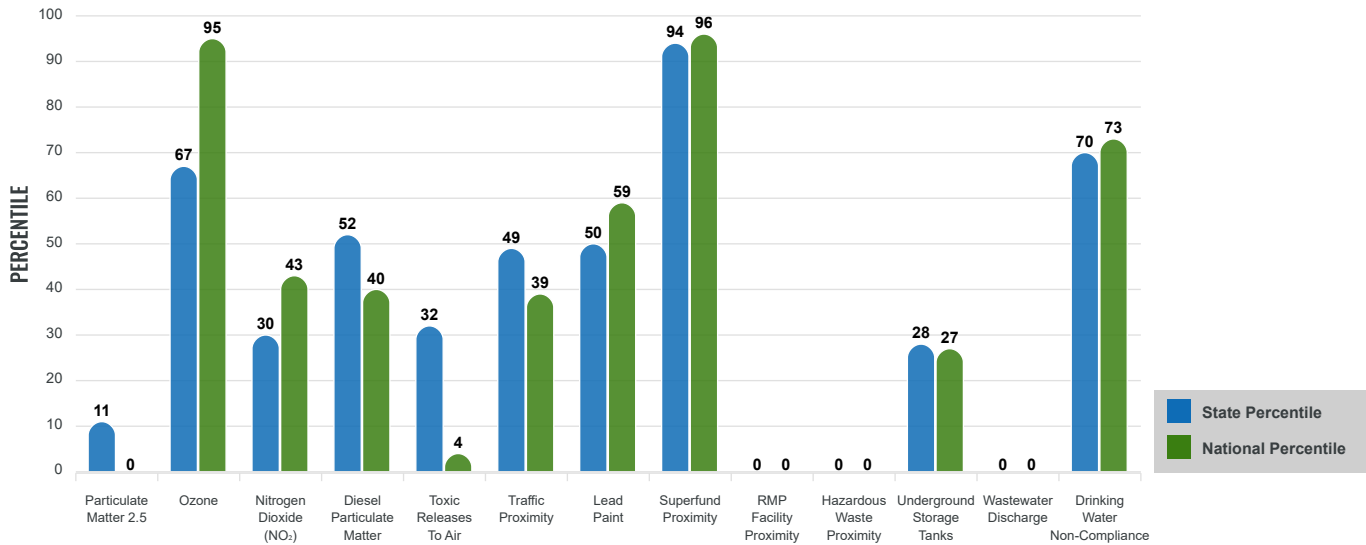
Environmental Justice & Supplemental Indexes

The environmental justice and supplemental indexes are a combination of environmental and socioeconomic information. There are thirteen EJ indexes and supplemental indexes in EJScreen reflecting the 13 environmental indicators. The indexes for a selected area are compared to those for all other locations in the state or nation. For more information and calculation details on the EJ and supplemental indexes, please visit the [EJScreen website](#).

EJ INDEXES

The EJ indexes help users screen for potential EJ concerns. To do this, the EJ index combines data on low income and people of color populations with a single environmental indicator.

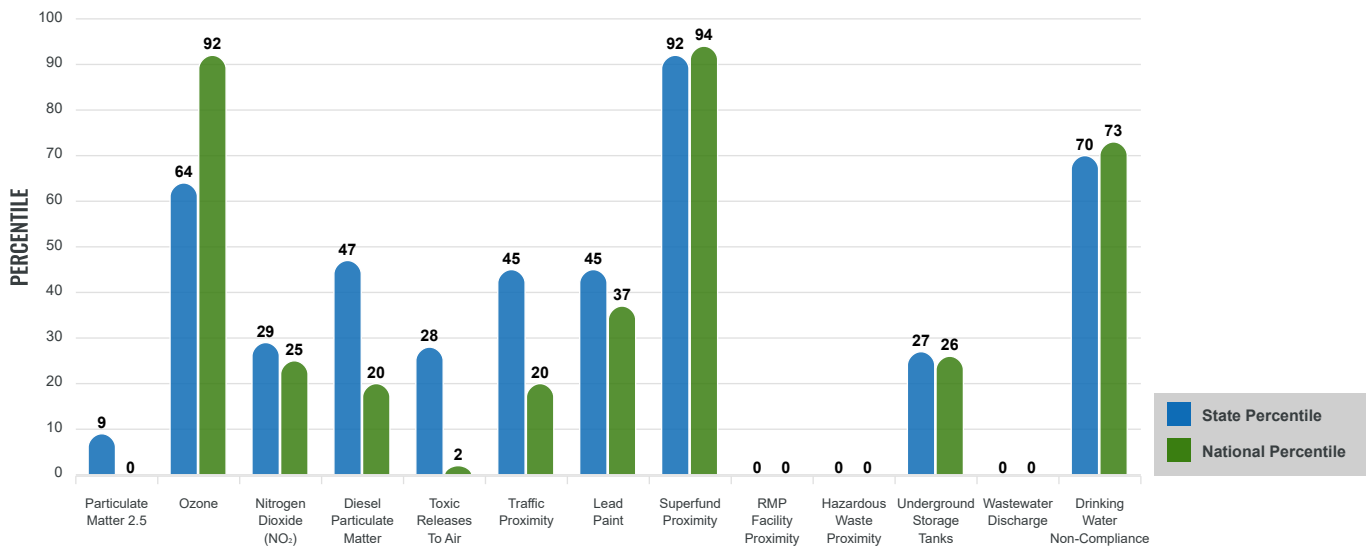
EJ INDEXES FOR THE SELECTED LOCATION



SUPPLEMENTAL INDEXES

The supplemental indexes offer a different perspective on community-level vulnerability. They combine data on percent low income, percent persons with disabilities, percent less than high school education, percent limited English speaking, and percent low life expectancy with a single environmental indicator.

SUPPLEMENTAL INDEXES FOR THE SELECTED LOCATION



Report for 5 miles Ring Centered at 35.418923,-108.016232

Report produced September 24, 2024 using EJScreen Version 2.3

EJScreen Environmental and Socioeconomic Indicators Data

SELECTED VARIABLES	VALUE	STATE AVERAGE	PERCENTILE IN STATE	USA AVERAGE	PERCENTILE IN USA
ENVIRONMENTAL BURDEN INDICATORS					
Particulate Matter 2.5 (µg/m ³)	4.61	6.11	4	8.45	0
Ozone (ppb)	64.6	65.3	37	61.8	69
Nitrogen Dioxide (NO ₂) (ppbv)	3.7	8.1	15	7.8	12
Diesel Particulate Matter (µg/m ³)	0.0583	0.187	29	0.191	11
Toxic Releases to Air (toxicity-weighted concentration)	0.001	29	16	4,600	1
Traffic Proximity (daily traffic count/distance to road)	48,000	730,000	28	1,700,000	11
Lead Paint (% Pre-1960 Housing)	0.026	0.19	30	0.3	21
Superfund Proximity (site count/km distance)	0.39	0.34	81	0.39	80
RMP Facility Proximity (facility count/km distance)	0	0.2	0	0.57	0
Hazardous Waste Proximity (facility count/km distance)	0	1.2	0	3.5	0
Underground Storage Tanks (count/km ²)	0.00046	2.8	28	3.6	26
Wastewater Discharge (toxicity-weighted concentration/m distance)	0	990000	0	700000	0
Drinking Water Non-Compliance (points)	0.011	5.6	70	2.2	73
SOCIOECONOMIC INDICATORS					
Demographic Index USA	3.05	N/A	N/A	1.34	95
Supplemental Demographic Index USA	2.59	N/A	N/A	1.64	90
Demographic Index State	3.43	2.16	92	N/A	N/A
Supplemental Demographic Index State	2.29	1.62	83	N/A	N/A
People of Color	95%	62%	90	40%	92
Low Income	66%	39%	86	30%	92
Unemployment Rate	11%	6%	79	6%	84
Limited English Speaking Households	3%	6%	54	5%	67
Less Than High School Education	40%	14%	95	11%	96
Under Age 5	4%	5%	53	5%	47
Over Age 64	12%	20%	29	18%	34

*Diesel particulate matter index is from the EPA's Air Toxics Data Update, which is the Agency's ongoing, comprehensive evaluation of air toxics in the United States. This effort aims to prioritize air toxics, emission sources, and locations of interest for further study. It is important to remember that the air toxics data presented here provide broad estimates of health risks over geographic areas of the country, not definitive risks to specific individuals or locations. More information on the Air Toxics Data Update can be found at: <https://www.epa.gov/haps/air-toxics-data-update>.

Sites reporting to EPA within defined area:

Superfund	1
Hazardous Waste, Treatment, Storage, and Disposal Facilities	0
Water Dischargers	9
Air Pollution	2
Brownfields	2
Toxic Release Inventory	2

Other community features within defined area:

Schools	1
Hospitals	0
Places of Worship	1

Other environmental data:

Air Non-attainment	No
Impaired Waters	No

Selected location contains American Indian Reservation Lands*	Yes
Selected location contains a "Justice40 (CEJST)" disadvantaged community	Yes
Selected location contains an EPA IRA disadvantaged community	Yes

Report for 5 miles Ring Centered at 35.418923,-108.016232
 Report produced September 24, 2024 using EJScreen Version 2.3

EJScreen Environmental and Socioeconomic Indicators Data

HEALTH INDICATORS

INDICATOR	VALUE	STATE AVERAGE	STATE PERCENTILE	US AVERAGE	US PERCENTILE
Low Life Expectancy	23%	19%	79	20%	78
Heart Disease	9.2	5.9	96	5.8	95
Asthma	15.8	11.2	99	10.3	99
Cancer	5.2	6.1	27	6.4	24
Persons with Disabilities	14.3%	17.1%	39	13.7%	60

CLIMATE INDICATORS

INDICATOR	VALUE	STATE AVERAGE	STATE PERCENTILE	US AVERAGE	US PERCENTILE
Flood Risk	10%	9%	68	12%	65
Wildfire Risk	63%	58%	41	14%	87

CRITICAL SERVICE GAPS

INDICATOR	VALUE	STATE AVERAGE	STATE PERCENTILE	US AVERAGE	US PERCENTILE
Broadband Internet	66%	20%	97	13%	99
Lack of Health Insurance	16%	10%	83	9%	85
Housing Burden	No	N/A	N/A	N/A	N/A
Transportation Access Burden	Yes	N/A	N/A	N/A	N/A
Food Desert	Yes	N/A	N/A	N/A	N/A

Report for 5 miles Ring Centered at 35.418923,-108.016232

Report produced September 24, 2024 using EJScreen Version 2.3

Location: User-specified point center at 35.418923, -108.016232
 Ring (buffer): 5-miles radius
 Description: Red Cap NM0158

Summary of ACS Estimates		2018 - 2022
Population		729
Population Density (per sq. mile)		9
People of Color Population		694
% People of Color Population		95%
Households		187
Housing Units		233
Housing Units Built Before 1950		3
Per Capita Income		14,592
Land Area (sq. miles) (Source: SF1)		82.78
% Land Area		100%
Water Area (sq. miles) (Source: SF1)		0.18
% Water Area		0%

	2018 - 2022 ACS Estimates	Percent	MOE (±)
Population by Race			
Total	729	100%	427
Population Reporting One Race	715	98%	632
White	71	10%	153
Black	0	0%	13
American Indian	643	88%	427
Asian	0	0%	13
Pacific Islander	0	0%	13
Some Other Race	0	0%	13
Population Reporting Two or More Races	15	2%	49
Total Hispanic Population	53	7%	132
Total Non-Hispanic Population	677		
White Alone	35	5%	90
Black Alone	0	0%	13
American Indian Alone	642	88%	428
Non-Hispanic Asian Alone	0	0%	13
Pacific Islander Alone	0	0%	13
Other Race Alone	0	0%	13
Two or More Races Alone	0	0%	13
Population by Sex			
Male	407	56%	368
Female	323	44%	149
Population by Age			
Age 0-4	32	4%	69
Age 0-17	245	34%	232
Age 18+	485	66%	249
Age 65+	90	12%	93

Data Note: Detail may not sum to totals due to rounding. Hispanic population can be of any race.

N/A means not available. **Source:** U.S. Census Bureau, American Community Survey (ACS) 2018 - 2022

Location: User-specified point center at 35.418923, -108.016232

Ring (buffer): 5-miles radius

Description: Red Cap NM0158

	2018 - 2022 ACS Estimates	Percent	MOE (±)
Population 25+ by Educational Attainment			
Total	440	100%	225
Less than 9th Grade	61	14%	111
9th - 12th Grade, No Diploma	113	26%	148
High School Graduate	141	32%	132
Some College, No Degree	85	19%	123
Associate Degree	5	1%	16
Bachelor's Degree or more	34	8%	68
Population Age 5+ Years by Ability to Speak English			
Total	697	100%	388
Speak only English	354	51%	374
Non-English at Home ¹⁺²⁺³⁺⁴	343	49%	236
¹ Speak English "very well"	321	46%	237
² Speak English "well"	13	2%	108
³ Speak English "not well"	8	1%	73
⁴ Speak English "not at all"	1	0%	43
³⁺⁴ Speak English "less than well"	9	1%	85
²⁺³⁺⁴ Speak English "less than very well"	22	3%	137
Limited English Speaking Households*			
Total	5	100%	44
Speak Spanish	0	0%	13
Speak Other Indo-European Languages	0	0%	13
Speak Asian-Pacific Island Languages	0	0%	13
Speak Other Languages	5	100%	38
Households by Household Income			
Household Income Base	187	100%	96
< \$15,000	56	30%	88
\$15,000 - \$25,000	22	12%	64
\$25,000 - \$50,000	41	22%	63
\$50,000 - \$75,000	19	10%	41
\$75,000 +	50	27%	108
Occupied Housing Units by Tenure			
Total	187	100%	96
Owner Occupied	184	98%	97
Renter Occupied	3	2%	12
Employed Population Age 16+ Years			
Total	519	100%	237
In Labor Force	258	50%	212
Civilian Unemployed in Labor Force	28	11%	55
Not In Labor Force	261	50%	163

Data Note: Detail may not sum to totals due to rounding. Hispanic population can be of anyrace.

N/A means not available. **Source:** U.S. Census Bureau, American Community Survey (ACS)

*Households in which no one 14 and over speaks English "very well" or speaks English only.

Location: User-specified point center at 35.418923, -108.016232

Ring (buffer): 5-miles radius

Description: Red Cap NM0158

	2018 - 2022 ACS Estimates	Percent	MOE (±)
Population by Language Spoken at Home*			
Total (persons age 5 and above)	669	100%	328
English	204	31%	133
Spanish	0	0%	13
French, Haitian, or Cajun	0	0%	13
German or other West Germanic	0	0%	13
Russian, Polish, or Other Slavic	0	0%	13
Other Indo-European	0	0%	13
Korean	0	0%	13
Chinese (including Mandarin, Cantonese)	0	0%	13
Vietnamese	0	0%	13
Tagalog (including Filipino)	0	0%	13
Other Asian and Pacific Island	0	0%	13
Arabic	0	0%	13
Other and Unspecified	465	69%	266
Total Non-English	465	69%	354

Data Note: Detail may not sum to totals due to rounding. Hispanic population can be of any race.
N/A means not available. **Source:** U.S. Census Bureau, American Community Survey (ACS) 2018 - 2022.
*Population by Language Spoken at Home is available at the census tract summary level and up.