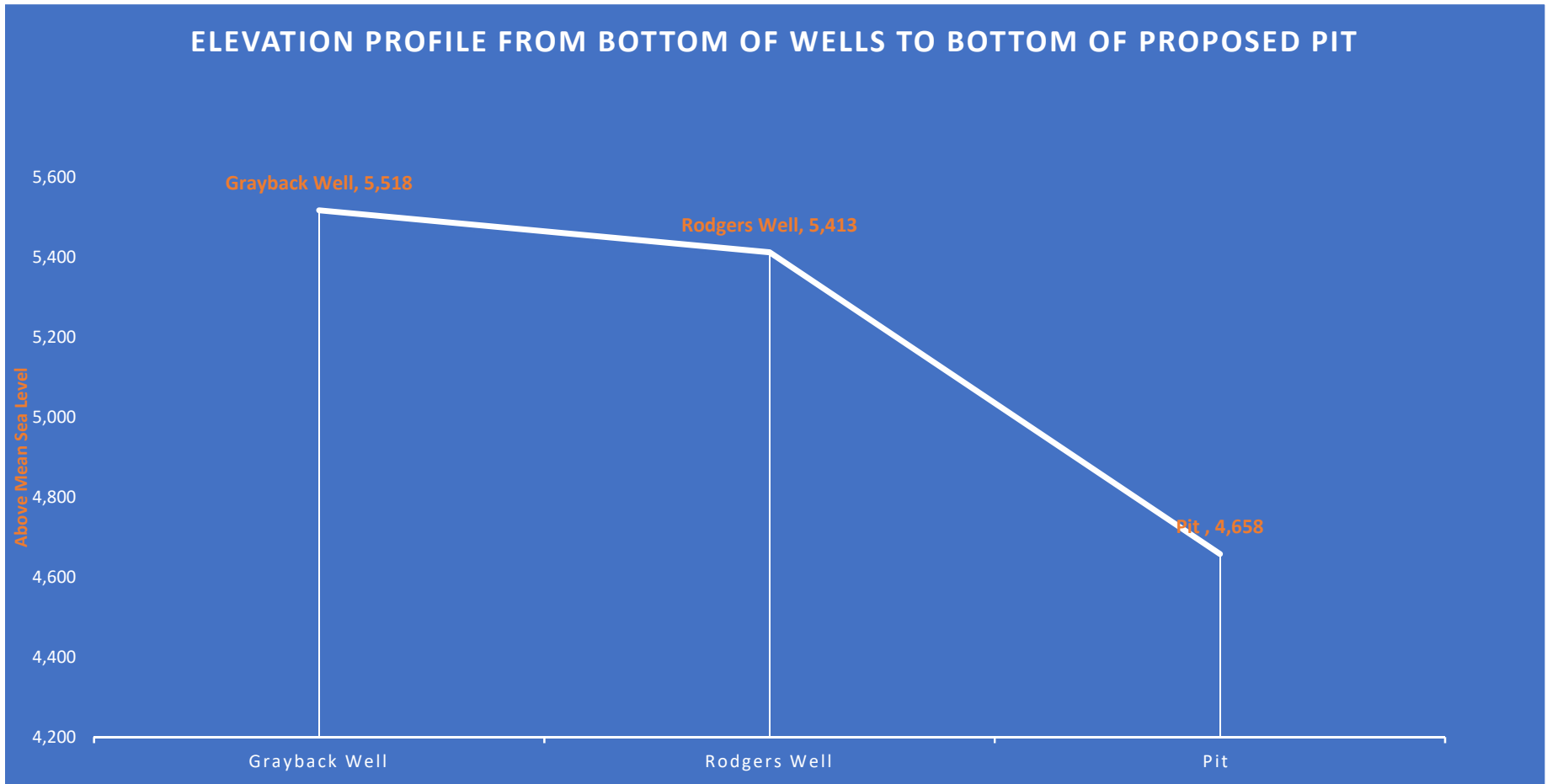


Site	Elevation		Depth
	Change 860 Ft.	Elevation Profile	
Grayback Well	5,518	5,718	200
Rodgers Well	5,413	5,563	150
Pit	4,658	5,438	780

### ELEVATION PROFILE FROM BOTTOM OF WELLS TO BOTTOM OF PROPOSED PIT





Graph: Min, Avg, Max Elevation: 5438, 5593, 5718 ft  
Range Totals: Distance: 1.63 mi Elev Gain/Loss: 103 ft, -383 ft Max Slope: 14.8%, -24.1% Avg Slope: 3.9%, -5.1%



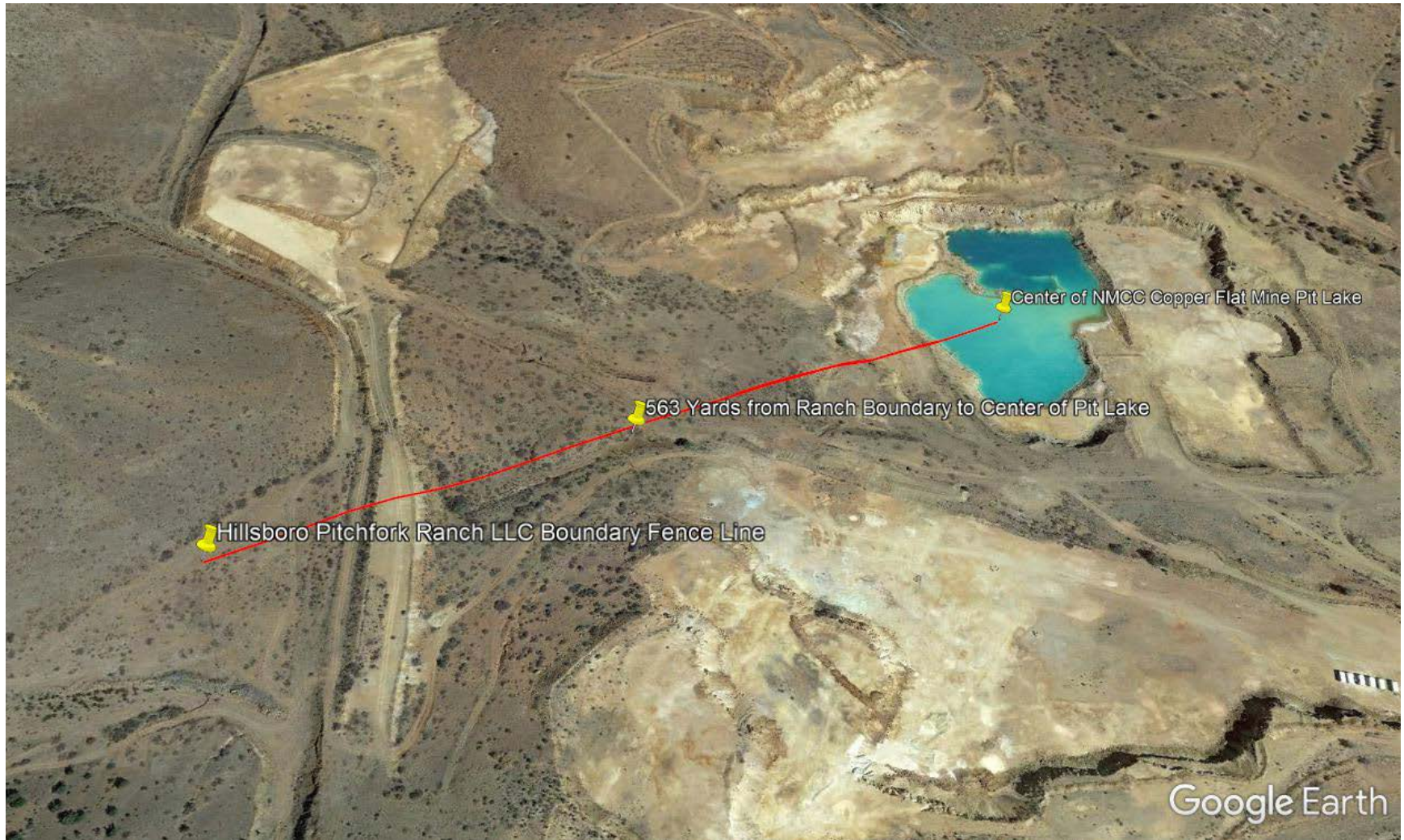


General Area of Grayback Drainage System Affected by NMCC Copper Flat Mine Development

Affected Area 1,744 Acres More or Less

© 2018 Google

Google Earth



Center of NMCC Copper Flat Mine Pit Lake

563 Yards from Ranch Boundary to Center of Pit Lake

Hillsboro Pitchfork Ranch LLC Boundary Fence Line

Google Earth



