

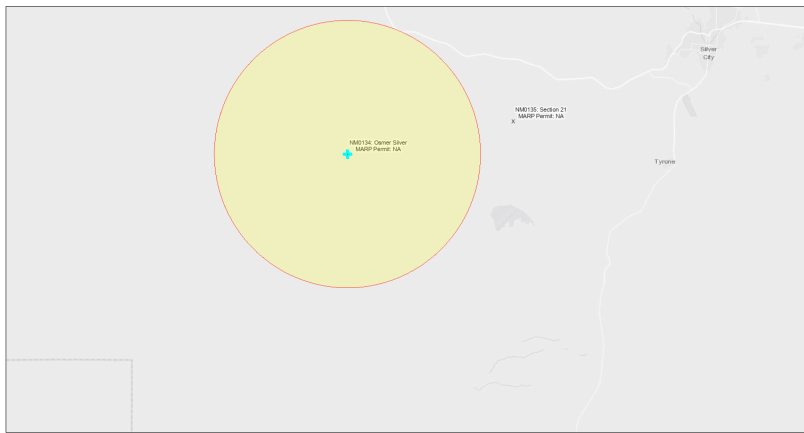


# EJScreen Community Report

This report provides environmental and socioeconomic information for user-defined areas, and combines that data into environmental justice and supplemental indexes.

## Osmer Silver NM0134

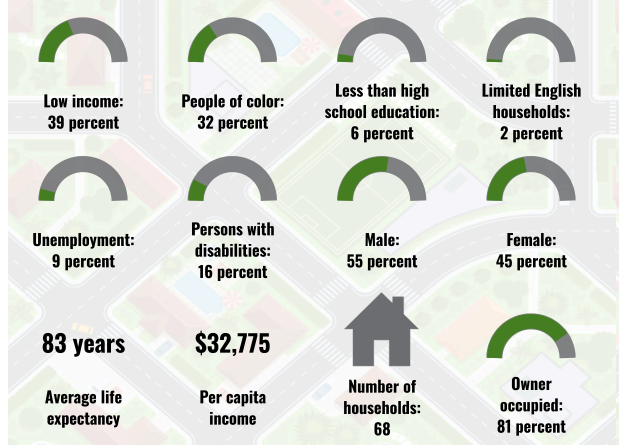
5 miles Ring Centered at 32.715155,-108.507404  
Population: 126  
Area in square miles: 78.53



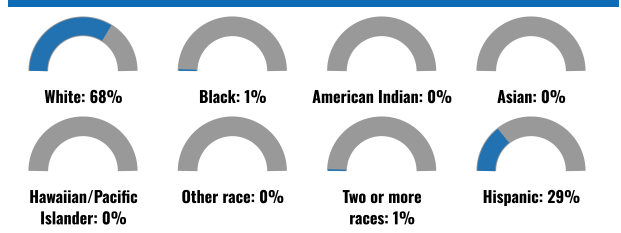
September 23, 2024  
Osmer Silver NM0134  
\* Abandoned Uranium Mines

1:144,448  
0 1.5 3 4.5 6 mi  
0 2.25 4.5 9 km  
Bureau of Land Management, EPA, HHS, Census, USGS, BIA, IHS, New Mexico Energy, Storage and Natural Resources Department, EPA, HHS, IHS

### COMMUNITY INFORMATION



### BREAKDOWN BY RACE



### BREAKDOWN BY AGE



### LIMITED ENGLISH SPEAKING BREAKDOWN



### LANGUAGES SPOKEN AT HOME

LANGUAGE	PERCENT
No language data available.	

Notes: Numbers may not sum to totals due to rounding. Hispanic population can be of any race. Source: U.S. Census Bureau, American Community Survey (ACS) 2018-2022. Life expectancy data comes from the Centers for Disease Control.

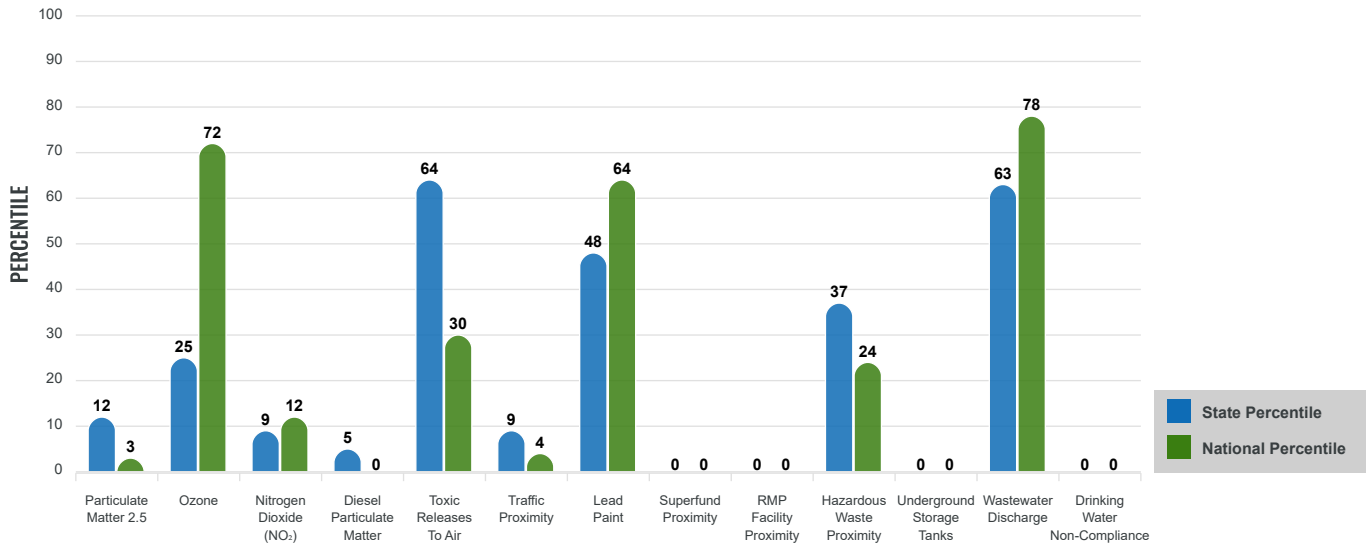
# Environmental Justice & Supplemental Indexes

The environmental justice and supplemental indexes are a combination of environmental and socioeconomic information. There are thirteen EJ indexes and supplemental indexes in EJScreen reflecting the 13 environmental indicators. The indexes for a selected area are compared to those for all other locations in the state or nation. For more information and calculation details on the EJ and supplemental indexes, please visit the [EJScreen website](#).

## EJ INDEXES

The EJ indexes help users screen for potential EJ concerns. To do this, the EJ index combines data on low income and people of color populations with a single environmental indicator.

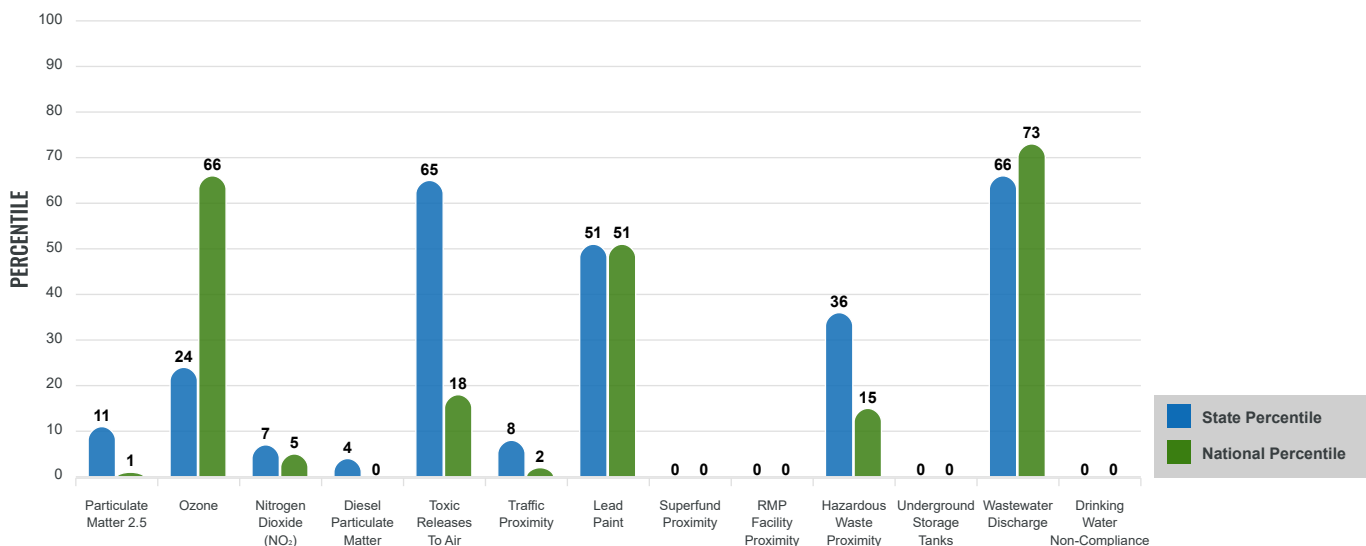
### EJ INDEXES FOR THE SELECTED LOCATION



## SUPPLEMENTAL INDEXES

The supplemental indexes offer a different perspective on community-level vulnerability. They combine data on percent low income, percent persons with disabilities, percent less than high school education, percent limited English speaking, and percent low life expectancy with a single environmental indicator.

### SUPPLEMENTAL INDEXES FOR THE SELECTED LOCATION



Report for 5 miles Ring Centered at 32.715155,-108.507404

Report produced September 23, 2024 using EJScreen Version 2.3

# EJScreen Environmental and Socioeconomic Indicators Data

SELECTED VARIABLES	VALUE	STATE AVERAGE	PERCENTILE IN STATE	USA AVERAGE	PERCENTILE IN USA
<b>ENVIRONMENTAL BURDEN INDICATORS</b>					
Particulate Matter 2.5 (µg/m <sup>3</sup> )	4.89	6.11	13	8.45	1
Ozone (ppb)	63.5	65.3	30	61.8	65
Nitrogen Dioxide (NO <sub>2</sub> ) (ppbv)	2.8	8.1	8	7.8	5
Diesel Particulate Matter (µg/m <sup>3</sup> )	0.0134	0.187	5	0.191	0
Toxic Releases to Air (toxicity-weighted concentration)	50	29	84	4,600	17
Traffic Proximity (daily traffic count/distance to road)	3,700	730,000	12	1,700,000	2
Lead Paint (% Pre-1960 Housing)	0.24	0.19	69	0.3	52
Superfund Proximity (site count/km distance)	0	0.34	0	0.39	0
RMP Facility Proximity (facility count/km distance)	0	0.2	0	0.57	0
Hazardous Waste Proximity (facility count/km distance)	0.057	1.2	36	3.5	15
Underground Storage Tanks (count/km <sup>2</sup> )	0	2.8	0	3.6	0
Wastewater Discharge (toxicity-weighted concentration/m distance)	2100	990000	81	700000	79
Drinking Water Non-Compliance (points)	0	5.6	0	2.2	0
<b>SOCIOECONOMIC INDICATORS</b>					
Demographic Index USA	1.41	N/A	N/A	1.34	60
Supplemental Demographic Index USA	1.42	N/A	N/A	1.64	42
Demographic Index State	1.51	2.16	24	N/A	N/A
Supplemental Demographic Index State	1.14	1.62	26	N/A	N/A
People of Color	32%	62%	11	40%	50
Low Income	39%	39%	50	30%	68
Unemployment Rate	9%	6%	74	6%	80
Limited English Speaking Households	2%	6%	52	5%	65
Less Than High School Education	6%	14%	34	11%	40
Under Age 5	8%	5%	77	5%	75
Over Age 64	32%	20%	85	18%	90

\*Diesel particulate matter index is from the EPA's Air Toxics Data Update, which is the Agency's ongoing, comprehensive evaluation of air toxics in the United States. This effort aims to prioritize air toxics, emission sources, and locations of interest for further study. It is important to remember that the air toxics data presented here provide broad estimates of health risks over geographic areas of the country, not definitive risks to specific individuals or locations. More information on the Air Toxics Data Update can be found at: <https://www.epa.gov/haps/air-toxics-data-update>.

**Sites reporting to EPA within defined area:**

Superfund .....	0
Hazardous Waste, Treatment, Storage, and Disposal Facilities .....	0
Water Dischargers .....	0
Air Pollution .....	0
Brownfields .....	0
Toxic Release Inventory .....	0

**Other community features within defined area:**

Schools .....	0
Hospitals .....	0
Places of Worship .....	0

**Other environmental data:**

Air Non-attainment .....	No
Impaired Waters .....	Yes

Selected location contains American Indian Reservation Lands* .....	No
Selected location contains a "Justice40 (CEJST)" disadvantaged community .....	No
Selected location contains an EPA IRA disadvantaged community .....	No

Report for 5 miles Ring Centered at 32.715155,-108.507404  
 Report produced September 23, 2024 using EJScreen Version 2.3

## EJScreen Environmental and Socioeconomic Indicators Data

### HEALTH INDICATORS

INDICATOR	VALUE	STATE AVERAGE	STATE PERCENTILE	US AVERAGE	US PERCENTILE
Low Life Expectancy	15%	19%	10	20%	11
Heart Disease	7.4	5.9	85	5.8	82
Asthma	10.2	11.2	16	10.3	50
Cancer	8.7	6.1	94	6.4	91
Persons with Disabilities	16.2%	17.1%	50	13.7%	70

### CLIMATE INDICATORS

INDICATOR	VALUE	STATE AVERAGE	STATE PERCENTILE	US AVERAGE	US PERCENTILE
Flood Risk	13%	9%	77	12%	74
Wildfire Risk	82%	58%	49	14%	89

### CRITICAL SERVICE GAPS

INDICATOR	VALUE	STATE AVERAGE	STATE PERCENTILE	US AVERAGE	US PERCENTILE
Broadband Internet	13%	20%	41	13%	61
Lack of Health Insurance	10%	10%	61	9%	68
Housing Burden	No	N/A	N/A	N/A	N/A
Transportation Access Burden	Yes	N/A	N/A	N/A	N/A
Food Desert	No	N/A	N/A	N/A	N/A

Report for 5 miles Ring Centered at 32.715155,-108.507404

Report produced September 23, 2024 using EJScreen Version 2.3

Location: User-specified point center at 32.715155, -108.507404  
 Ring (buffer): 5-miles radius  
 Description: Osmer Silver NM0134

Summary of ACS Estimates		2018 - 2022
Population		126
Population Density (per sq. mile)		3
People of Color Population		40
% People of Color Population		32%
Households		68
Housing Units		90
Housing Units Built Before 1950		14
Per Capita Income		32,775
Land Area (sq. miles) (Source: SF1)		49.64
% Land Area		100%
Water Area (sq. miles) (Source: SF1)		0.12
% Water Area		0%

	2018 - 2022 ACS Estimates	Percent	MOE (±)
<b>Population by Race</b>			
Total	126	100%	383
Population Reporting One Race	113	90%	398
White	110	87%	316
Black	2	1%	32
American Indian	0	0%	13
Asian	0	0%	13
Pacific Islander	0	0%	13
Some Other Race	1	1%	11
Population Reporting Two or More Races	13	10%	213
Total Hispanic Population	37	29%	294
Total Non-Hispanic Population	89		
White Alone	86	68%	234
Black Alone	2	1%	32
American Indian Alone	0	0%	13
Non-Hispanic Asian Alone	0	0%	13
Pacific Islander Alone	0	0%	13
Other Race Alone	0	0%	13
Two or More Races Alone	1	1%	22
<b>Population by Sex</b>			
Male	69	55%	232
Female	57	45%	226
<b>Population by Age</b>			
Age 0-4	10	8%	120
Age 0-17	25	20%	161
Age 18+	101	80%	201
Age 65+	41	32%	130

**Data Note:** Detail may not sum to totals due to rounding. Hispanic population can be of any race.

N/A means not available. **Source:** U.S. Census Bureau, American Community Survey (ACS) 2018 - 2022

Location: User-specified point center at 32.715155, -108.507404

Ring (buffer): 5-miles radius

Description: Osmer Silver NM0134

	2018 - 2022 ACS Estimates	Percent	MOE (±)
<b>Population 25+ by Educational Attainment</b>			
Total	96	100%	229
Less than 9th Grade	1	1%	37
9th - 12th Grade, No Diploma	5	5%	57
High School Graduate	26	27%	123
Some College, No Degree	23	24%	104
Associate Degree	12	12%	56
Bachelor's Degree or more	29	31%	118
<b>Population Age 5+ Years by Ability to Speak English</b>			
Total	117	100%	304
Speak only English	96	82%	245
Non-English at Home <sup>1+2+3+4</sup>	21	18%	112
<sup>1</sup> Speak English "very well"	17	15%	106
<sup>2</sup> Speak English "well"	2	2%	55
<sup>3</sup> Speak English "not well"	2	1%	54
<sup>4</sup> Speak English "not at all"	0	0%	45
<sup>3+4</sup> Speak English "less than well"	2	1%	71
<sup>2+3+4</sup> Speak English "less than very well"	4	3%	84
<b>Limited English Speaking Households*</b>			
Total	2	100%	39
Speak Spanish	2	100%	32
Speak Other Indo-European Languages	0	0%	13
Speak Asian-Pacific Island Languages	0	0%	13
Speak Other Languages	0	0%	13
<b>Households by Household Income</b>			
Household Income Base	68	100%	129
< \$15,000	10	14%	57
\$15,000 - \$25,000	7	10%	44
\$25,000 - \$50,000	24	35%	69
\$50,000 - \$75,000	11	17%	74
\$75,000 +	16	24%	62
<b>Occupied Housing Units by Tenure</b>			
Total	68	100%	129
Owner Occupied	55	81%	121
Renter Occupied	13	19%	69
<b>Employed Population Age 16+ Years</b>			
Total	102	100%	247
In Labor Force	42	41%	151
Civilian Unemployed in Labor Force	4	9%	43
Not In Labor Force	60	59%	204

**Data Note:** Detail may not sum to totals due to rounding. Hispanic population can be of anyrace.

N/A means not available. **Source:** U.S. Census Bureau, American Community Survey (ACS)

\*Households in which no one 14 and over speaks English "very well" or speaks English only.

Location: User-specified point center at 32.715155, -108.507404

Ring (buffer): 5-miles radius

Description: Osmer Silver NM0134

	2018 - 2022 ACS Estimates	Percent	MOE (±)
<b>Population by Language Spoken at Home*</b>			
Total (persons age 5 and above)	N/A	N/A	N/A
English	N/A	N/A	N/A
Spanish	N/A	N/A	N/A
French, Haitian, or Cajun	N/A	N/A	N/A
German or other West Germanic	N/A	N/A	N/A
Russian, Polish, or Other Slavic	N/A	N/A	N/A
Other Indo-European	N/A	N/A	N/A
Korean	N/A	N/A	N/A
Chinese (including Mandarin, Cantonese)	N/A	N/A	N/A
Vietnamese	N/A	N/A	N/A
Tagalog (including Filipino)	N/A	N/A	N/A
Other Asian and Pacific Island	N/A	N/A	N/A
Arabic	N/A	N/A	N/A
Other and Unspecified	N/A	N/A	N/A
Total Non-English	N/A	N/A	N/A

**Data Note:** Detail may not sum to totals due to rounding. Hispanic population can be of any race.  
 N/A means not available. **Source:** U.S. Census Bureau, American Community Survey (ACS) 2018 - 2022.  
 \*Population by Language Spoken at Home is available at the census tract summary level and up.