

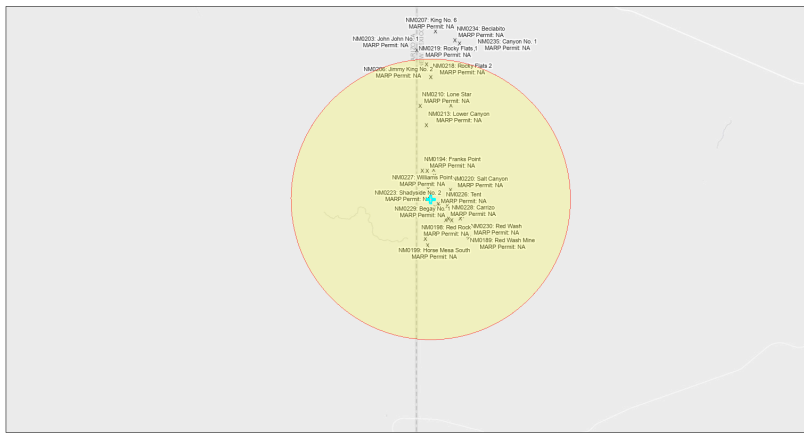


# EJScreen Community Report

This report provides environmental and socioeconomic information for user-defined areas, and combines that data into environmental justice and supplemental indexes.

## Lookout Point Sunnyside NM0211

5 miles Ring Centered at 36.720089,-109.036261  
Population: 213  
Area in square miles: 78.53

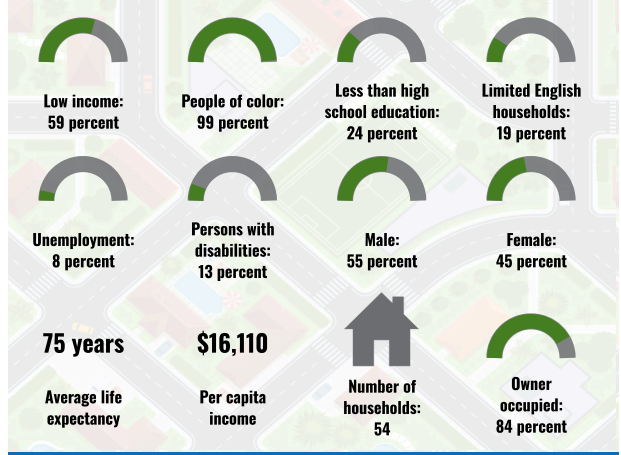


September 25, 2024  
Lookout Point Sunnyside NM0211  
\* Abandoned Uranium Mines

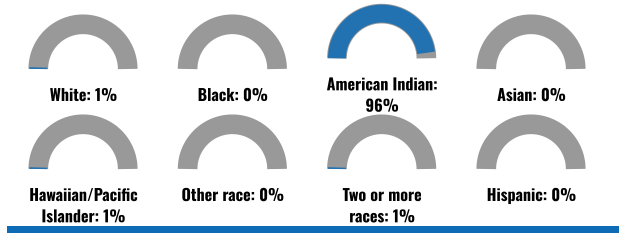
1:144,448  
0 1.5 3 4.5 6 mi  
0 2.25 4.5 9 km

Bureau of Land Management, EPA, HERR, Geomix, USGS, BPA, IFS, New Mexico Energy, Storage and Natural Resources Department, EIR, HERR, IFS

### COMMUNITY INFORMATION



### BREAKDOWN BY RACE



### BREAKDOWN BY AGE



### LIMITED ENGLISH SPEAKING BREAKDOWN



Notes: Numbers may not sum to totals due to rounding. Hispanic population can be of any race. Source: U.S. Census Bureau American Community Survey (ACS) 2018-2022. Life expectancy data comes from the Centers for Disease Control.

### LANGUAGES SPOKEN AT HOME

LANGUAGE	PERCENT
No language data available.	

Report for 5 miles Ring Centered at 36.720089,-109.036261  
Report produced September 25, 2024 using EJScreen Version 2.3

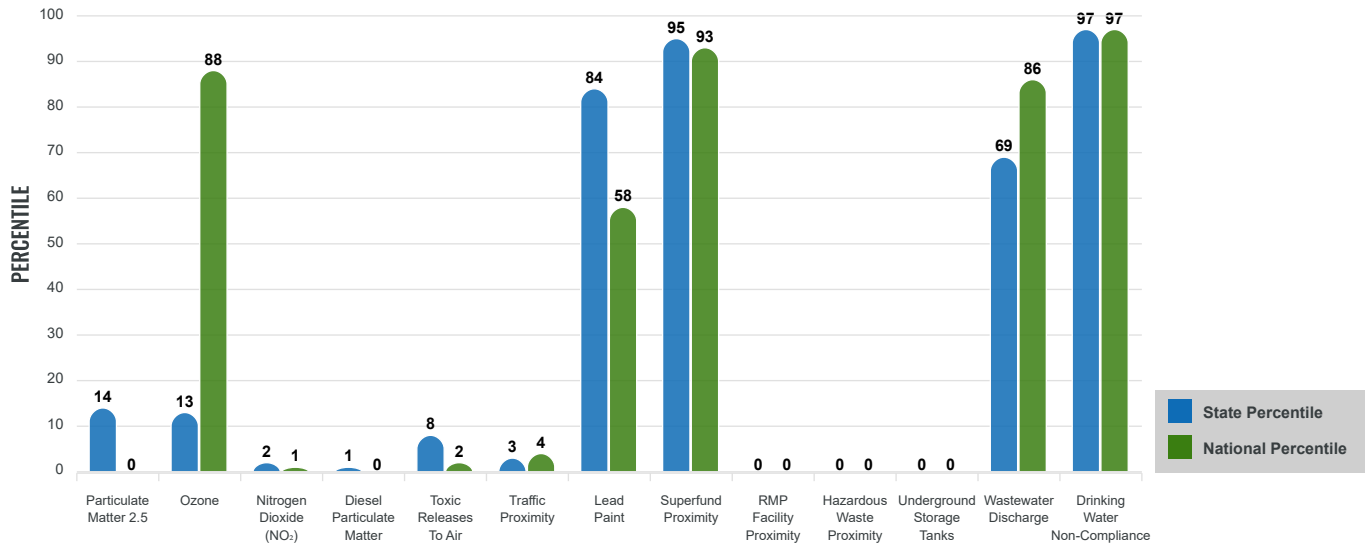
# Environmental Justice & Supplemental Indexes

The environmental justice and supplemental indexes are a combination of environmental and socioeconomic information. There are thirteen EJ indexes and supplemental indexes in EJScreen reflecting the 13 environmental indicators. The indexes for a selected area are compared to those for all other locations in the state or nation. For more information and calculation details on the EJ and supplemental indexes, please visit the [EJScreen website](#).

## EJ INDEXES

The EJ indexes help users screen for potential EJ concerns. To do this, the EJ index combines data on low income and people of color populations with a single environmental indicator.

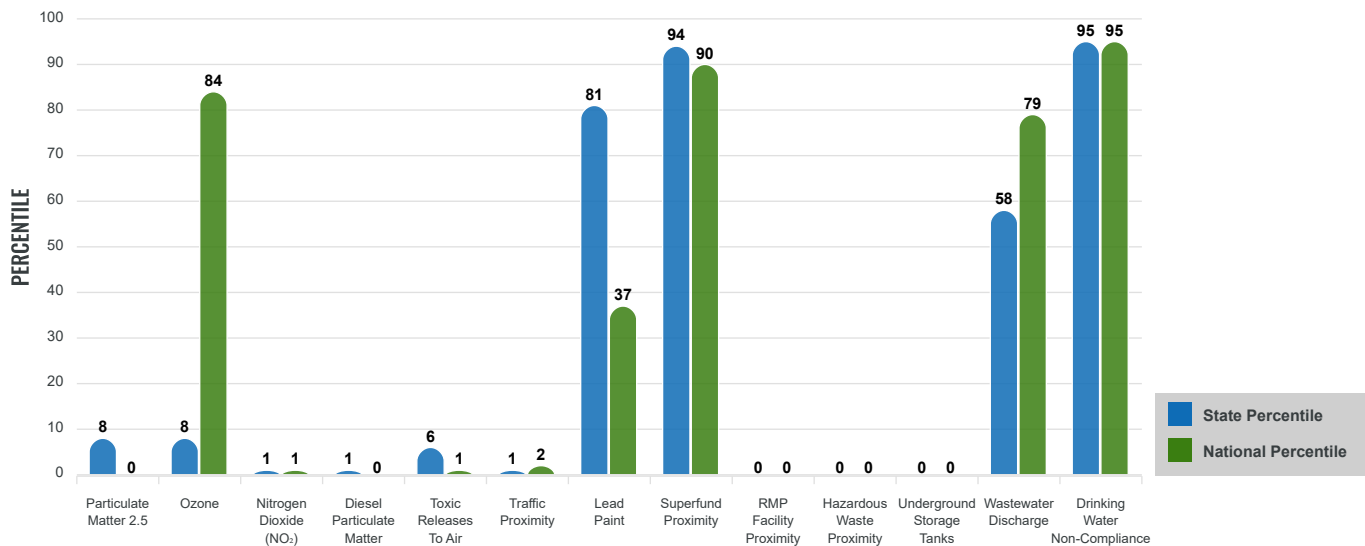
### EJ INDEXES FOR THE SELECTED LOCATION



## SUPPLEMENTAL INDEXES

The supplemental indexes offer a different perspective on community-level vulnerability. They combine data on percent low income, percent persons with disabilities, percent less than high school education, percent limited English speaking, and percent low life expectancy with a single environmental indicator.

### SUPPLEMENTAL INDEXES FOR THE SELECTED LOCATION



Report for 5 miles Ring Centered at 36.720089,-109.036261

Report produced September 25, 2024 using EJScreen Version 2.3

# EJScreen Environmental and Socioeconomic Indicators Data

SELECTED VARIABLES	VALUE	STATE AVERAGE	PERCENTILE IN STATE	USA AVERAGE	PERCENTILE IN USA
<b>ENVIRONMENTAL BURDEN INDICATORS</b>					
Particulate Matter 2.5 (µg/m <sup>3</sup> )	4.57	7.4	4	8.45	0
Ozone (ppb)	61	71.9	4	61.8	53
Nitrogen Dioxide (NO <sub>2</sub> ) (ppbv)	1.2	9.3	0	7.8	0
Diesel Particulate Matter (µg/m <sup>3</sup> )	0.0095	0.209	0	0.191	0
Toxic Releases to Air (toxicity-weighted concentration)	0.63	2,800	9	4,600	4
Traffic Proximity (daily traffic count/distance to road)	160	1,900,000	1	1,700,000	1
Lead Paint (% Pre-1960 Housing)	0.027	0.088	59	0.3	21
Superfund Proximity (site count/km distance)	0.18	0.41	80	0.39	68
RMP Facility Proximity (facility count/km distance)	0	0.54	0	0.57	0
Hazardous Waste Proximity (facility count/km distance)	0	1.5	0	3.5	0
Underground Storage Tanks (count/km <sup>2</sup> )	0	1.6	0	3.6	0
Wastewater Discharge (toxicity-weighted concentration/m distance)	66	32000	29	700000	52
Drinking Water Non-Compliance (points)	1	1.8	65	2.2	78
<b>SOCIOECONOMIC INDICATORS</b>					
Demographic Index USA	2.96	N/A	N/A	1.34	94
Supplemental Demographic Index USA	2.56	N/A	N/A	1.64	90
Demographic Index State	3.17	1.53	94	N/A	N/A
Supplemental Demographic Index State	2.45	1.43	91	N/A	N/A
People of Color	99%	44%	97	40%	96
Low Income	59%	31%	87	30%	88
Unemployment Rate	9%	6%	77	6%	77
Limited English Speaking Households	20%	4%	95	5%	93
Less Than High School Education	24%	12%	84	11%	87
Under Age 5	5%	5%	55	5%	54
Over Age 64	14%	21%	46	18%	40

\*Diesel particulate matter index is from the EPA's Air Toxics Data Update, which is the Agency's ongoing, comprehensive evaluation of air toxics in the United States. This effort aims to prioritize air toxics, emission sources, and locations of interest for further study. It is important to remember that the air toxics data presented here provide broad estimates of health risks over geographic areas of the country, not definitive risks to specific individuals or locations. More information on the Air Toxics Data Update can be found at: <https://www.epa.gov/haps/air-toxics-data-update>.

**Sites reporting to EPA within defined area:**

Superfund .....	0
Hazardous Waste, Treatment, Storage, and Disposal Facilities .....	0
Water Dischargers .....	0
Air Pollution .....	0
Brownfields .....	0
Toxic Release Inventory .....	0

**Other community features within defined area:**

Schools .....	0
Hospitals .....	0
Places of Worship .....	0

**Other environmental data:**

Air Non-attainment .....	No
Impaired Waters .....	No

Selected location contains American Indian Reservation Lands* .....	Yes
Selected location contains a "Justice40 (CEJST)" disadvantaged community .....	Yes
Selected location contains an EPA IRA disadvantaged community .....	Yes

Report for 5 miles Ring Centered at 36.720089,-109.036261  
 Report produced September 25, 2024 using EJScreen Version 2.3

## EJScreen Environmental and Socioeconomic Indicators Data

### HEALTH INDICATORS

INDICATOR	VALUE	STATE AVERAGE	STATE PERCENTILE	US AVERAGE	US PERCENTILE
Low Life Expectancy	23%	19%	87	20%	80
Heart Disease	9.3	5.9	91	5.8	96
Asthma	14.6	10.5	97	10.3	99
Cancer	6.1	6.7	52	6.4	42
Persons with Disabilities	13.3%	14.2%	53	13.7%	53

### CLIMATE INDICATORS

INDICATOR	VALUE	STATE AVERAGE	STATE PERCENTILE	US AVERAGE	US PERCENTILE
Flood Risk	N/A	6%	N/A	12%	N/A
Wildfire Risk	N/A	48%	N/A	14%	N/A

### CRITICAL SERVICE GAPS

INDICATOR	VALUE	STATE AVERAGE	STATE PERCENTILE	US AVERAGE	US PERCENTILE
Broadband Internet	75%	12%	99	13%	99
Lack of Health Insurance	31%	11%	97	9%	98
Housing Burden	No	N/A	N/A	N/A	N/A
Transportation Access Burden	Yes	N/A	N/A	N/A	N/A
Food Desert	Yes	N/A	N/A	N/A	N/A

Report for 5 miles Ring Centered at 36.720089,-109.036261

Report produced September 25, 2024 using EJScreen Version 2.3

Location: User-specified point center at 36.720089, -109.036261  
 Ring (buffer): 5-miles radius  
 Description: Lookout Point Sunnyside NM0211

Summary of ACS Estimates		2018 - 2022
Population		213
Population Density (per sq. mile)		3
People of Color Population		211
% People of Color Population		99%
Households		54
Housing Units		81
Housing Units Built Before 1950		0
Per Capita Income		16,110
Land Area (sq. miles) (Source: SF1)		65.55
% Land Area		100%
Water Area (sq. miles) (Source: SF1)		0.04
% Water Area		0%

	2018 - 2022 ACS Estimates	Percent	MOE (±)
<b>Population by Race</b>			
Total	213	100%	269
Population Reporting One Race	209	98%	339
White	2	1%	13
Black	0	0%	14
American Indian	205	96%	268
Asian	1	0%	13
Pacific Islander	2	1%	17
Some Other Race	0	0%	14
Population Reporting Two or More Races	3	2%	83
Total Hispanic Population	0	0%	20
Total Non-Hispanic Population	213		
White Alone	2	1%	13
Black Alone	0	0%	14
American Indian Alone	205	96%	268
Non-Hispanic Asian Alone	1	0%	13
Pacific Islander Alone	2	1%	17
Other Race Alone	0	0%	14
Two or More Races Alone	3	1%	78
<b>Population by Sex</b>			
Male	118	55%	171
Female	95	45%	122
<b>Population by Age</b>			
Age 0-4	11	5%	42
Age 0-17	40	19%	68
Age 18+	173	81%	142
Age 65+	29	14%	69

**Data Note:** Detail may not sum to totals due to rounding. Hispanic population can be of any race.

N/A means not available. **Source:** U.S. Census Bureau, American Community Survey (ACS) 2018 - 2022

Location: User-specified point center at 36.720089, -109.036261

Ring (buffer): 5-miles radius

Description: Lookout Point Sunnyside NM0211

	2018 - 2022 ACS Estimates	Percent	MOE (±)
<b>Population 25+ by Educational Attainment</b>			
Total	138	100%	165
Less than 9th Grade	17	12%	43
9th - 12th Grade, No Diploma	16	12%	39
High School Graduate	53	38%	76
Some College, No Degree	37	27%	77
Associate Degree	8	6%	65
Bachelor's Degree or more	8	5%	40
<b>Population Age 5+ Years by Ability to Speak English</b>			
Total	202	100%	249
Speak only English	60	30%	109
Non-English at Home <sup>1+2+3+4</sup>	142	70%	173
<sup>1</sup> Speak English "very well"	111	55%	160
<sup>2</sup> Speak English "well"	21	10%	91
<sup>3</sup> Speak English "not well"	9	4%	78
<sup>4</sup> Speak English "not at all"	2	1%	47
<sup>3+4</sup> Speak English "less than well"	10	5%	88
<sup>2+3+4</sup> Speak English "less than very well"	31	15%	111
<b>Limited English Speaking Households*</b>			
Total	11	100%	70
Speak Spanish	0	0%	14
Speak Other Indo-European Languages	0	0%	14
Speak Asian-Pacific Island Languages	0	0%	14
Speak Other Languages	11	100%	66
<b>Households by Household Income</b>			
Household Income Base	54	100%	66
< \$15,000	19	35%	42
\$15,000 - \$25,000	8	15%	63
\$25,000 - \$50,000	11	21%	30
\$50,000 - \$75,000	5	9%	29
\$75,000 +	11	21%	30
<b>Occupied Housing Units by Tenure</b>			
Total	54	100%	66
Owner Occupied	46	84%	57
Renter Occupied	9	16%	63
<b>Employed Population Age 16+ Years</b>			
Total	178	100%	224
In Labor Force	64	36%	109
Civilian Unemployed in Labor Force	5	8%	29
Not In Labor Force	113	64%	165

**Data Note:** Detail may not sum to totals due to rounding. Hispanic population can be of anyrace.

N/A means not available. **Source:** U.S. Census Bureau, American Community Survey (ACS)

\*Households in which no one 14 and over speaks English "very well" or speaks English only.

Location: User-specified point center at 36.720089, -109.036261

Ring (buffer): 5-miles radius

Description: Lookout Point Sunnyside NM0211

	2018 - 2022 ACS Estimates	Percent	MOE (±)
<b>Population by Language Spoken at Home*</b>			
Total (persons age 5 and above)	N/A	N/A	N/A
English	N/A	N/A	N/A
Spanish	N/A	N/A	N/A
French, Haitian, or Cajun	N/A	N/A	N/A
German or other West Germanic	N/A	N/A	N/A
Russian, Polish, or Other Slavic	N/A	N/A	N/A
Other Indo-European	N/A	N/A	N/A
Korean	N/A	N/A	N/A
Chinese (including Mandarin, Cantonese)	N/A	N/A	N/A
Vietnamese	N/A	N/A	N/A
Tagalog (including Filipino)	N/A	N/A	N/A
Other Asian and Pacific Island	N/A	N/A	N/A
Arabic	N/A	N/A	N/A
Other and Unspecified	N/A	N/A	N/A
Total Non-English	N/A	N/A	N/A

**Data Note:** Detail may not sum to totals due to rounding. Hispanic population can be of any race.  
 N/A means not available. **Source:** U.S. Census Bureau, American Community Survey (ACS) 2018 - 2022.  
 \*Population by Language Spoken at Home is available at the census tract summary level and up.