



EJScreen Community Report

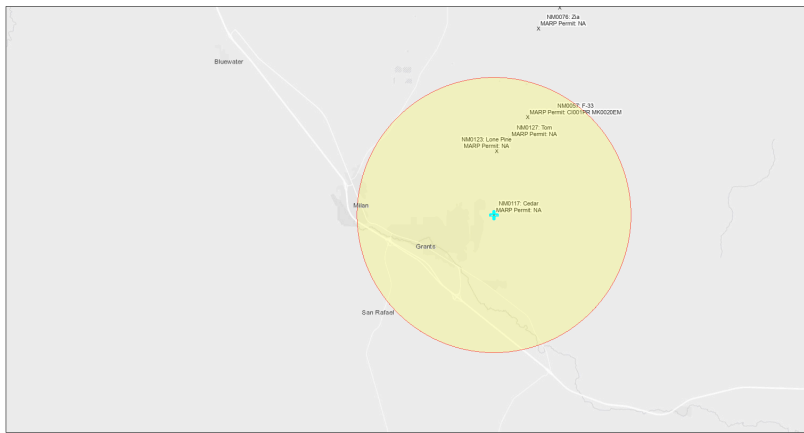
This report provides environmental and socioeconomic information for user-defined areas, and combines that data into environmental justice and supplemental indexes.

Cedar NM0117

5 miles Ring Centered at 35.166960,-107.805667

Population: 10,981

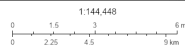
Area in square miles: 78.53



September 23, 2024

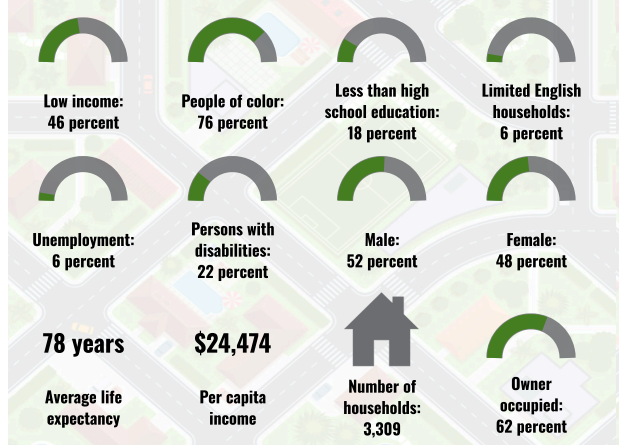
◆ Cedar NM0117

* Abandoned Uranium Mines

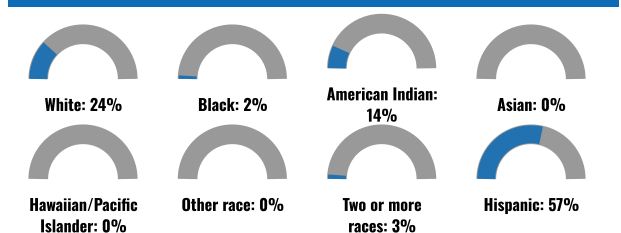


Bureau of Land Management, EPA, HHS, Census, USGS, EPA, USF, New Mexico Energy, Storage and Natural Resources Department, EPA, HHS, USF

COMMUNITY INFORMATION



BREAKDOWN BY RACE



BREAKDOWN BY AGE



LIMITED ENGLISH SPEAKING BREAKDOWN



LANGUAGES SPOKEN AT HOME

LANGUAGE	PERCENT
English	57%
Spanish	35%
Other and Unspecified	7%
Total Non-English	43%

Notes: Numbers may not sum to totals due to rounding. Hispanic population can be of any race. Source: U.S. Census Bureau, American Community Survey (ACS) 2018-2022. Life expectancy data comes from the Centers for Disease Control.

Report for 5 miles Ring Centered at 35.166960,-107.805667

Report produced September 23, 2024 using EJScreen Version 2.3

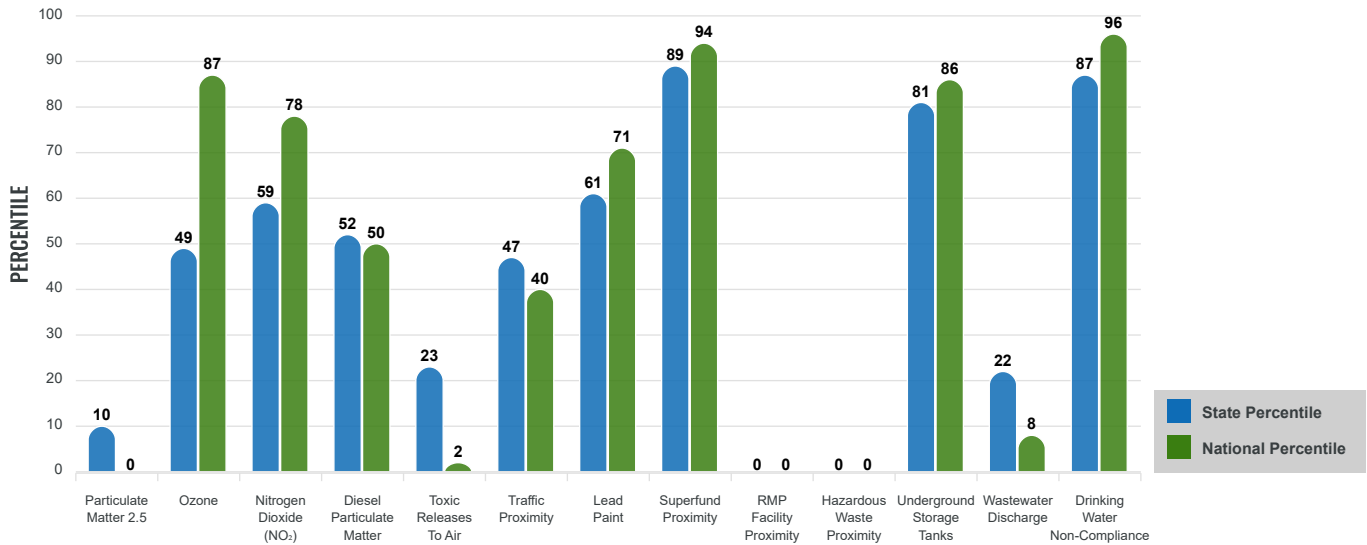
Environmental Justice & Supplemental Indexes

The environmental justice and supplemental indexes are a combination of environmental and socioeconomic information. There are thirteen EJ indexes and supplemental indexes in EJScreen reflecting the 13 environmental indicators. The indexes for a selected area are compared to those for all other locations in the state or nation. For more information and calculation details on the EJ and supplemental indexes, please visit the [EJScreen website](#).

EJ INDEXES

The EJ indexes help users screen for potential EJ concerns. To do this, the EJ index combines data on low income and people of color populations with a single environmental indicator.

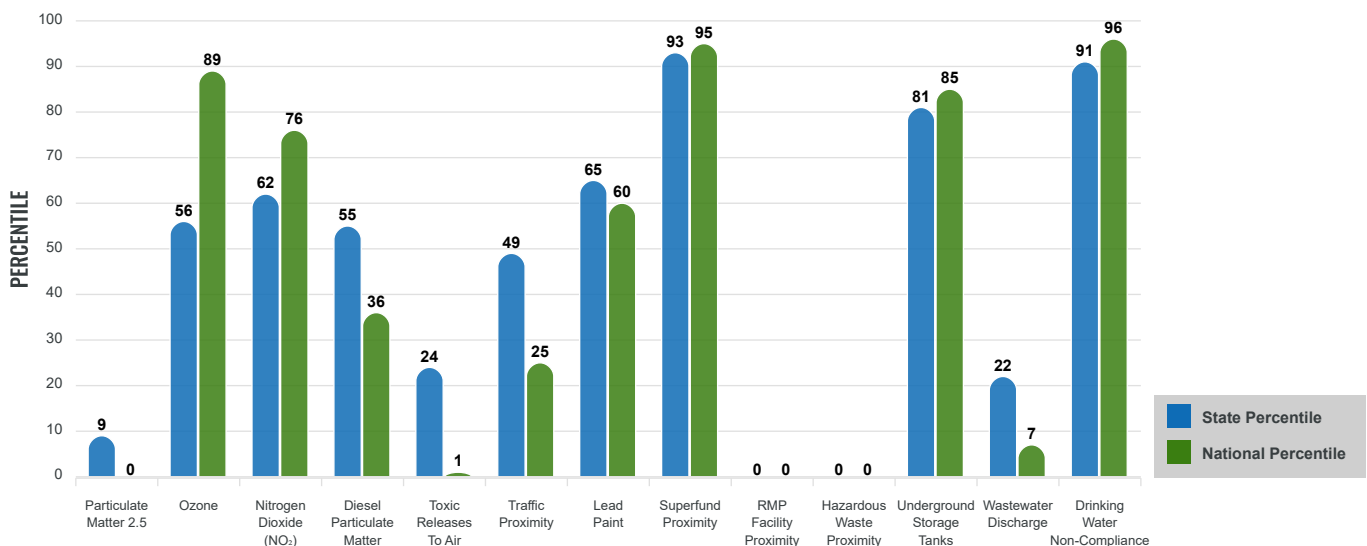
EJ INDEXES FOR THE SELECTED LOCATION



SUPPLEMENTAL INDEXES

The supplemental indexes offer a different perspective on community-level vulnerability. They combine data on percent low income, percent persons with disabilities, percent less than high school education, percent limited English speaking, and percent low life expectancy with a single environmental indicator.

SUPPLEMENTAL INDEXES FOR THE SELECTED LOCATION



Report for 5 miles Ring Centered at 35.166960,-107.805667

Report produced September 23, 2024 using EJScreen Version 2.3

EJScreen Environmental and Socioeconomic Indicators Data

SELECTED VARIABLES	VALUE	STATE AVERAGE	PERCENTILE IN STATE	USA AVERAGE	PERCENTILE IN USA
ENVIRONMENTAL BURDEN INDICATORS					
Particulate Matter 2.5 (µg/m ³)	4.65	6.11	6	8.45	0
Ozone (ppb)	64.6	65.3	36	61.8	69
Nitrogen Dioxide (NO ₂) (ppbv)	7.8	8.1	41	7.8	52
Diesel Particulate Matter (µg/m ³)	0.0809	0.187	39	0.191	20
Toxic Releases to Air (toxicity-weighted concentration)	0.16	29	32	4,600	3
Traffic Proximity (daily traffic count/distance to road)	79,000	730,000	34	1,700,000	15
Lead Paint (% Pre-1960 Housing)	0.17	0.19	61	0.3	44
Superfund Proximity (site count/km distance)	1.8	0.34	96	0.39	95
RMP Facility Proximity (facility count/km distance)	0	0.2	0	0.57	0
Hazardous Waste Proximity (facility count/km distance)	0	1.2	0	3.5	0
Underground Storage Tanks (count/km ²)	5.5	2.8	85	3.6	81
Wastewater Discharge (toxicity-weighted concentration/m distance)	0.063	990000	37	700000	14
Drinking Water Non-Compliance (points)	14	5.6	88	2.2	97
SOCIOECONOMIC INDICATORS					
Demographic Index USA	2.24	N/A	N/A	1.34	83
Supplemental Demographic Index USA	2.28	N/A	N/A	1.64	83
Demographic Index State	2.55	2.16	64	N/A	N/A
Supplemental Demographic Index State	2	1.62	72	N/A	N/A
People of Color	76%	62%	67	40%	81
Low Income	46%	39%	61	30%	77
Unemployment Rate	6%	6%	58	6%	64
Limited English Speaking Households	6%	6%	69	5%	78
Less Than High School Education	18%	14%	70	11%	79
Under Age 5	7%	5%	71	5%	67
Over Age 64	15%	20%	42	18%	47

*Diesel particulate matter index is from the EPA's Air Toxics Data Update, which is the Agency's ongoing, comprehensive evaluation of air toxics in the United States. This effort aims to prioritize air toxics, emission sources, and locations of interest for further study. It is important to remember that the air toxics data presented here provide broad estimates of health risks over geographic areas of the country, not definitive risks to specific individuals or locations. More information on the Air Toxics Data Update can be found at: <https://www.epa.gov/haps/air-toxics-data-update>.

Sites reporting to EPA within defined area:

Superfund	2
Hazardous Waste, Treatment, Storage, and Disposal Facilities	0
Water Dischargers	46
Air Pollution	24
Brownfields	0
Toxic Release Inventory	0

Other community features within defined area:

Schools	7
Hospitals	1
Places of Worship	4

Other environmental data:

Air Non-attainment	No
Impaired Waters	Yes

Selected location contains American Indian Reservation Lands*	Yes
Selected location contains a "Justice40 (CEJST)" disadvantaged community	Yes
Selected location contains an EPA IRA disadvantaged community	Yes

Report for 5 miles Ring Centered at 35.166960,-107.805667

Report produced September 23, 2024 using EJScreen Version 2.3

EJScreen Environmental and Socioeconomic Indicators Data

HEALTH INDICATORS

INDICATOR	VALUE	STATE AVERAGE	STATE PERCENTILE	US AVERAGE	US PERCENTILE
Low Life Expectancy	22%	19%	74	20%	72
Heart Disease	6.4	5.9	65	5.8	66
Asthma	11.6	11.2	73	10.3	83
Cancer	5.8	6.1	45	6.4	34
Persons with Disabilities	22.2%	17.1%	79	13.7%	90

CLIMATE INDICATORS

INDICATOR	VALUE	STATE AVERAGE	STATE PERCENTILE	US AVERAGE	US PERCENTILE
Flood Risk	10%	9%	68	12%	66
Wildfire Risk	14%	58%	32	14%	82

CRITICAL SERVICE GAPS

INDICATOR	VALUE	STATE AVERAGE	STATE PERCENTILE	US AVERAGE	US PERCENTILE
Broadband Internet	25%	20%	68	13%	85
Lack of Health Insurance	7%	10%	42	9%	51
Housing Burden	No	N/A	N/A	N/A	N/A
Transportation Access Burden	Yes	N/A	N/A	N/A	N/A
Food Desert	Yes	N/A	N/A	N/A	N/A

Report for 5 miles Ring Centered at 35.166960,-107.805667

Report produced September 23, 2024 using EJScreen Version 2.3

Location: User-specified point center at 35.166960, -107.805667
 Ring (buffer): 5-miles radius
 Description: Cedar NM0117

Summary of ACS Estimates		2018 - 2022
Population		10,981
Population Density (per sq. mile)		160
People of Color Population		8,391
% People of Color Population		76%
Households		3,309
Housing Units		4,075
Housing Units Built Before 1950		150
Per Capita Income		24,474
Land Area (sq. miles) (Source: SF1)		68.65
% Land Area		100%
Water Area (sq. miles) (Source: SF1)		0.03
% Water Area		0%

	2018 - 2022 ACS Estimates	Percent	MOE (±)
Population by Race			
Total	10,981	100%	1,383
Population Reporting One Race	9,211	84%	2,156
White	6,350	58%	1,380
Black	239	2%	196
American Indian	1,734	16%	312
Asian	33	0%	62
Pacific Islander	6	0%	13
Some Other Race	849	8%	193
Population Reporting Two or More Races	1,769	16%	274
Total Hispanic Population	6,286	57%	1,390
Total Non-Hispanic Population	4,695		
White Alone	2,590	24%	282
Black Alone	193	2%	196
American Indian Alone	1,522	14%	274
Non-Hispanic Asian Alone	33	0%	62
Pacific Islander Alone	6	0%	13
Other Race Alone	24	0%	29
Two or More Races Alone	326	3%	105
Population by Sex			
Male	5,753	52%	611
Female	5,227	48%	781
Population by Age			
Age 0-4	726	7%	197
Age 0-17	2,508	23%	343
Age 18+	8,473	77%	436
Age 65+	1,674	15%	208

Data Note: Detail may not sum to totals due to rounding. Hispanic population can be of any race.

N/A means not available. **Source:** U.S. Census Bureau, American Community Survey (ACS) 2018 - 2022

Location: User-specified point center at 35.166960, -107.805667
 Ring (buffer): 5-miles radius
 Description: Cedar NM0117

	2018 - 2022 ACS Estimates	Percent	MOE (±)
Population 25+ by Educational Attainment			
Total	7,542	100%	593
Less than 9th Grade	280	4%	83
9th - 12th Grade, No Diploma	1,082	14%	195
High School Graduate	2,242	30%	270
Some College, No Degree	1,925	26%	192
Associate Degree	770	10%	228
Bachelor's Degree or more	1,243	16%	257
Population Age 5+ Years by Ability to Speak English			
Total	10,255	100%	1,124
Speak only English	6,005	59%	600
Non-English at Home ¹⁺²⁺³⁺⁴	4,250	41%	449
¹ Speak English "very well"	3,148	31%	432
² Speak English "well"	426	4%	119
³ Speak English "not well"	586	6%	233
⁴ Speak English "not at all"	90	1%	145
³⁺⁴ Speak English "less than well"	676	7%	237
²⁺³⁺⁴ Speak English "less than very well"	1,102	11%	243
Limited English Speaking Households*			
Total	202	100%	74
Speak Spanish	190	94%	71
Speak Other Indo-European Languages	8	4%	13
Speak Asian-Pacific Island Languages	0	0%	13
Speak Other Languages	4	2%	60
Households by Household Income			
Household Income Base	3,309	100%	250
< \$15,000	412	12%	98
\$15,000 - \$25,000	479	14%	118
\$25,000 - \$50,000	757	23%	140
\$50,000 - \$75,000	496	15%	213
\$75,000 +	1,166	35%	248
Occupied Housing Units by Tenure			
Total	3,309	100%	250
Owner Occupied	2,053	62%	256
Renter Occupied	1,256	38%	204
Employed Population Age 16+ Years			
Total	8,647	100%	756
In Labor Force	3,950	46%	552
Civilian Unemployed in Labor Force	236	6%	118
Not In Labor Force	4,697	54%	486

Data Note: Detail may not sum to totals due to rounding. Hispanic population can be of anyrace.

N/A means not available. **Source:** U.S. Census Bureau, American Community Survey (ACS)

*Households in which no one 14 and over speaks English "very well" or speaks English only.

Location: User-specified point center at 35.166960, -107.805667

Ring (buffer): 5-miles radius

Description: Cedar NM0117

	2018 - 2022 ACS Estimates	Percent	MOE (±)
Population by Language Spoken at Home*			
Total (persons age 5 and above)	8,904	100%	691
English	5,096	57%	558
Spanish	3,116	35%	582
French, Haitian, or Cajun	15	0%	33
German or other West Germanic	8	0%	19
Russian, Polish, or Other Slavic	0	0%	19
Other Indo-European	18	0%	21
Korean	0	0%	19
Chinese (including Mandarin, Cantonese)	0	0%	19
Vietnamese	0	0%	19
Tagalog (including Filipino)	12	0%	21
Other Asian and Pacific Island	0	0%	19
Arabic	0	0%	19
Other and Unspecified	638	7%	232
Total Non-English	3,807	43%	868

Data Note: Detail may not sum to totals due to rounding. Hispanic population can be of any race.
 N/A means not available. **Source:** U.S. Census Bureau, American Community Survey (ACS) 2018 - 2022.
 *Population by Language Spoken at Home is available at the census tract summary level and up.