



# EJScreen Community Report

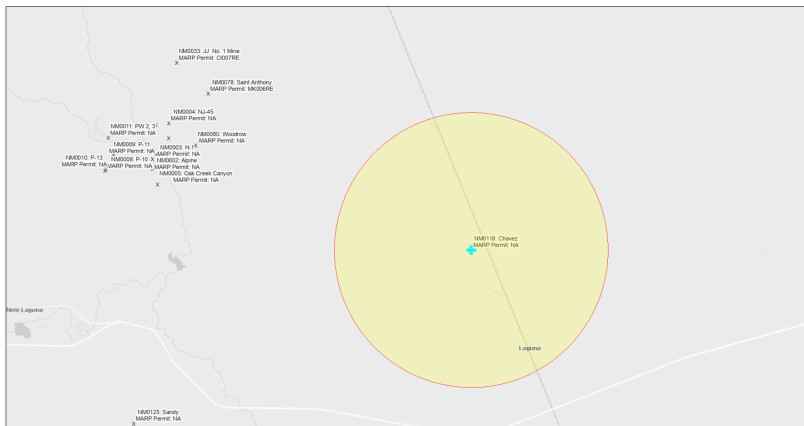
This report provides environmental and socioeconomic information for user-defined areas, and combines that data into environmental justice and supplemental indexes.

## Chavez NM0118

5 miles Ring Centered at 35.076645,-107.136593

Population: 1,088

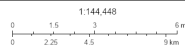
Area in square miles: 78.53



September 23, 2024

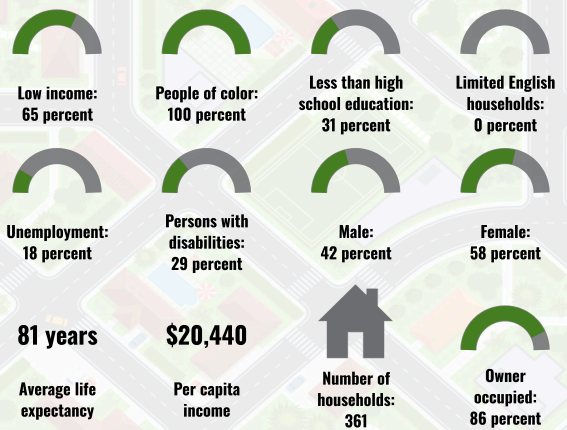
Chavez NM0118

Abandoned Uranium Mines

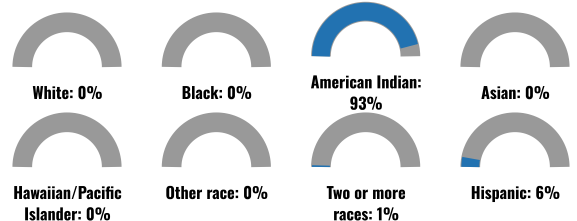


New Mexico Energy, Minerals and Natural Resources Department, Bureau of Geology, Office of Mineral Resources, Bureau of Land Management, ENR, HERE, Garmin, NOAA, EPA, USGS, Esri, HERE, DeLorme

### COMMUNITY INFORMATION



### BREAKDOWN BY RACE



### BREAKDOWN BY AGE



### LIMITED ENGLISH SPEAKING BREAKDOWN



### LANGUAGES SPOKEN AT HOME

LANGUAGE	PERCENT
No language data available.	

Notes: Numbers may not sum to totals due to rounding. Hispanic population can be of any race. Source: U.S. Census Bureau, American Community Survey (ACS) 2018-2022. Life expectancy data comes from the Centers for Disease Control.

Report for 5 miles Ring Centered at 35.076645,-107.136593

Report produced September 23, 2024 using EJScreen Version 2.3

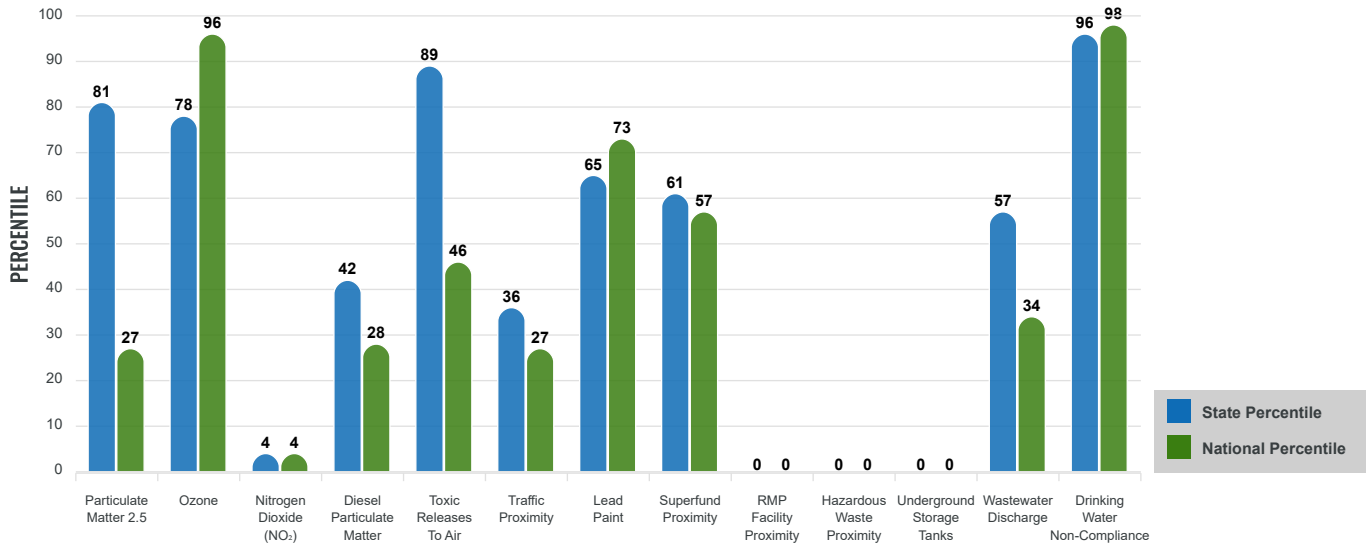
# Environmental Justice & Supplemental Indexes

The environmental justice and supplemental indexes are a combination of environmental and socioeconomic information. There are thirteen EJ indexes and supplemental indexes in EJScreen reflecting the 13 environmental indicators. The indexes for a selected area are compared to those for all other locations in the state or nation. For more information and calculation details on the EJ and supplemental indexes, please visit the [EJScreen website](#).

## EJ INDEXES

The EJ indexes help users screen for potential EJ concerns. To do this, the EJ index combines data on low income and people of color populations with a single environmental indicator.

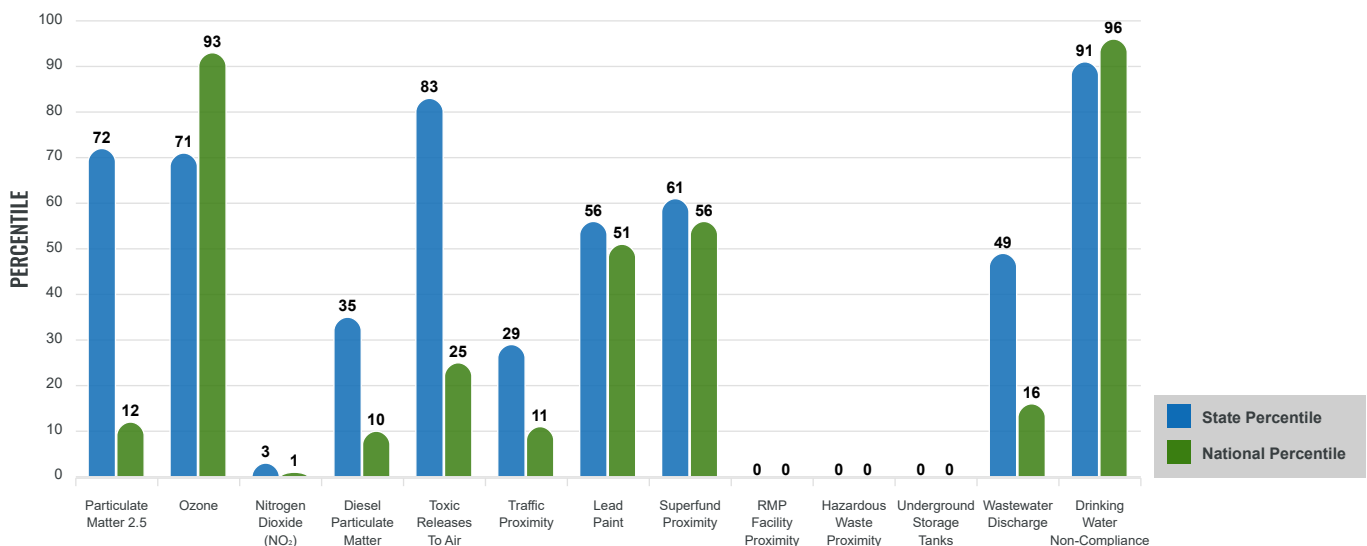
### EJ INDEXES FOR THE SELECTED LOCATION



## SUPPLEMENTAL INDEXES

The supplemental indexes offer a different perspective on community-level vulnerability. They combine data on percent low income, percent persons with disabilities, percent less than high school education, percent limited English speaking, and percent low life expectancy with a single environmental indicator.

### SUPPLEMENTAL INDEXES FOR THE SELECTED LOCATION



Report for 5 miles Ring Centered at 35.076645,-107.136593

Report produced September 23, 2024 using EJScreen Version 2.3

# EJScreen Environmental and Socioeconomic Indicators Data

SELECTED VARIABLES	VALUE	STATE AVERAGE	PERCENTILE IN STATE	USA AVERAGE	PERCENTILE IN USA
<b>ENVIRONMENTAL BURDEN INDICATORS</b>					
Particulate Matter 2.5 (µg/m <sup>3</sup> )	6.07	6.11	49	8.45	6
Ozone (ppb)	65.5	65.3	46	61.8	73
Nitrogen Dioxide (NO <sub>2</sub> ) (ppbv)	1.7	8.1	1	7.8	1
Diesel Particulate Matter (µg/m <sup>3</sup> )	0.0455	0.187	23	0.191	6
Toxic Releases to Air (toxicity-weighted concentration)	29	29	63	4,600	14
Traffic Proximity (daily traffic count/distance to road)	20,000	730,000	19	1,700,000	7
Lead Paint (% Pre-1960 Housing)	0.079	0.19	44	0.3	32
Superfund Proximity (site count/km distance)	0.25	0.34	76	0.39	74
RMP Facility Proximity (facility count/km distance)	0	0.2	0	0.57	0
Hazardous Waste Proximity (facility count/km distance)	0	1.2	0	3.5	0
Underground Storage Tanks (count/km <sup>2</sup> )	0	2.8	0	3.6	0
Wastewater Discharge (toxicity-weighted concentration/m distance)	0.0024	990000	30	700000	9
Drinking Water Non-Compliance (points)	9.3	5.6	87	2.2	92
<b>SOCIOECONOMIC INDICATORS</b>					
Demographic Index USA	3.1	N/A	N/A	1.34	96
Supplemental Demographic Index USA	2.49	N/A	N/A	1.64	89
Demographic Index State	3.5	2.16	93	N/A	N/A
Supplemental Demographic Index State	2.1	1.62	77	N/A	N/A
People of Color	100%	62%	97	40%	97
Low Income	65%	39%	84	30%	91
Unemployment Rate	18%	6%	91	6%	94
Limited English Speaking Households	0%	6%	0	5%	0
Less Than High School Education	31%	14%	89	11%	92
Under Age 5	3%	5%	42	5%	36
Over Age 64	14%	20%	36	18%	41

\*Diesel particulate matter index is from the EPA's Air Toxics Data Update, which is the Agency's ongoing, comprehensive evaluation of air toxics in the United States. This effort aims to prioritize air toxics, emission sources, and locations of interest for further study. It is important to remember that the air toxics data presented here provide broad estimates of health risks over geographic areas of the country, not definitive risks to specific individuals or locations. More information on the Air Toxics Data Update can be found at: <https://www.epa.gov/haps/air-toxics-data-update>.

**Sites reporting to EPA within defined area:**

Superfund .....	0
Hazardous Waste, Treatment, Storage, and Disposal Facilities .....	0
Water Dischargers .....	7
Air Pollution .....	0
Brownfields .....	0
Toxic Release Inventory .....	0

**Other community features within defined area:**

Schools .....	1
Hospitals .....	0
Places of Worship .....	0

**Other environmental data:**

Air Non-attainment .....	No
Impaired Waters .....	No

Selected location contains American Indian Reservation Lands* .....	Yes
Selected location contains a "Justice40 (CEJST)" disadvantaged community .....	Yes
Selected location contains an EPA IRA disadvantaged community .....	Yes

Report for 5 miles Ring Centered at 35.076645,-107.136593  
 Report produced September 23, 2024 using EJScreen Version 2.3

## EJScreen Environmental and Socioeconomic Indicators Data

### HEALTH INDICATORS

INDICATOR	VALUE	STATE AVERAGE	STATE PERCENTILE	US AVERAGE	US PERCENTILE
Low Life Expectancy	15%	19%	12	20%	13
Heart Disease	3.5	5.9	6	5.8	9
Asthma	11.1	11.2	61	10.3	76
Cancer	3.7	6.1	5	6.4	6
Persons with Disabilities	28.8%	17.1%	95	13.7%	97

### CLIMATE INDICATORS

INDICATOR	VALUE	STATE AVERAGE	STATE PERCENTILE	US AVERAGE	US PERCENTILE
Flood Risk	9%	9%	63	12%	60
Wildfire Risk	37%	58%	36	14%	84

### CRITICAL SERVICE GAPS

INDICATOR	VALUE	STATE AVERAGE	STATE PERCENTILE	US AVERAGE	US PERCENTILE
Broadband Internet	58%	20%	95	13%	99
Lack of Health Insurance	17%	10%	87	9%	89
Housing Burden	No	N/A	N/A	N/A	N/A
Transportation Access Burden	Yes	N/A	N/A	N/A	N/A
Food Desert	No	N/A	N/A	N/A	N/A

Report for 5 miles Ring Centered at 35.076645,-107.136593

Report produced September 23, 2024 using EJScreen Version 2.3

Location: User-specified point center at 35.076645, -107.136593  
 Ring (buffer): 5-miles radius  
 Description: Chavez NM0118

Summary of ACS Estimates		2018 - 2022
Population		1,088
Population Density (per sq. mile)		12
People of Color Population		1,087
% People of Color Population		100%
Households		361
Housing Units		413
Housing Units Built Before 1950		25
Per Capita Income		20,440
Land Area (sq. miles) (Source: SF1)		92.32
% Land Area		100%
Water Area (sq. miles) (Source: SF1)		0.12
% Water Area		0%

	2018 - 2022 ACS Estimates	Percent	MOE (±)
<b>Population by Race</b>			
Total	1,088	100%	639
Population Reporting One Race	1,076	99%	888
White	9	1%	200
Black	0	0%	13
American Indian	1,068	98%	636
Asian	0	0%	13
Pacific Islander	0	0%	13
Some Other Race	0	0%	13
Population Reporting Two or More Races	12	1%	82
Total Hispanic Population	65	6%	226
Total Non-Hispanic Population	1,023		
White Alone	1	0%	62
Black Alone	0	0%	13
American Indian Alone	1,010	93%	627
Non-Hispanic Asian Alone	0	0%	13
Pacific Islander Alone	0	0%	13
Other Race Alone	0	0%	13
Two or More Races Alone	12	1%	30
<b>Population by Sex</b>			
Male	456	42%	346
Female	632	58%	342
<b>Population by Age</b>			
Age 0-4	36	3%	44
Age 0-17	240	22%	147
Age 18+	848	78%	321
Age 65+	151	14%	118

**Data Note:** Detail may not sum to totals due to rounding. Hispanic population can be of any race.

N/A means not available. **Source:** U.S. Census Bureau, American Community Survey (ACS) 2018 - 2022

Location: User-specified point center at 35.076645, -107.136593

Ring (buffer): 5-miles radius

Description: Chavez NM0118

	2018 - 2022 ACS Estimates	Percent	MOE (±)
<b>Population 25+ by Educational Attainment</b>			
Total	732	100%	401
Less than 9th Grade	83	11%	75
9th - 12th Grade, No Diploma	146	20%	93
High School Graduate	244	33%	212
Some College, No Degree	176	24%	142
Associate Degree	30	4%	105
Bachelor's Degree or more	54	7%	71
<b>Population Age 5+ Years by Ability to Speak English</b>			
Total	1,053	100%	627
Speak only English	400	38%	260
Non-English at Home <sup>1+2+3+4</sup>	652	62%	392
<sup>1</sup> Speak English "very well"	619	59%	381
<sup>2</sup> Speak English "well"	26	2%	171
<sup>3</sup> Speak English "not well"	7	1%	51
<sup>4</sup> Speak English "not at all"	0	0%	45
<sup>3+4</sup> Speak English "less than well"	7	1%	68
<sup>2+3+4</sup> Speak English "less than very well"	33	3%	182
<b>Limited English Speaking Households*</b>			
Total	0	0%	84
Speak Spanish	0	0%	81
Speak Other Indo-European Languages	0	0%	13
Speak Asian-Pacific Island Languages	0	0%	13
Speak Other Languages	0	0%	13
<b>Households by Household Income</b>			
Household Income Base	361	100%	117
< \$15,000	92	25%	82
\$15,000 - \$25,000	76	21%	70
\$25,000 - \$50,000	70	19%	83
\$50,000 - \$75,000	32	9%	35
\$75,000 +	92	25%	88
<b>Occupied Housing Units by Tenure</b>			
Total	361	100%	117
Owner Occupied	310	86%	108
Renter Occupied	52	14%	41
<b>Employed Population Age 16+ Years</b>			
Total	882	100%	488
In Labor Force	464	53%	307
Civilian Unemployed in Labor Force	83	18%	84
Not In Labor Force	418	47%	251

**Data Note:** Detail may not sum to totals due to rounding. Hispanic population can be of anyrace.

N/A means not available. **Source:** U.S. Census Bureau, American Community Survey (ACS)

\*Households in which no one 14 and over speaks English "very well" or speaks English only.

Location: User-specified point center at 35.076645, -107.136593

Ring (buffer): 5-miles radius

Description: Chavez NM0118

	2018 - 2022 ACS Estimates	Percent	MOE (±)
<b>Population by Language Spoken at Home*</b>			
Total (persons age 5 and above)	N/A	N/A	N/A
English	N/A	N/A	N/A
Spanish	N/A	N/A	N/A
French, Haitian, or Cajun	N/A	N/A	N/A
German or other West Germanic	N/A	N/A	N/A
Russian, Polish, or Other Slavic	N/A	N/A	N/A
Other Indo-European	N/A	N/A	N/A
Korean	N/A	N/A	N/A
Chinese (including Mandarin, Cantonese)	N/A	N/A	N/A
Vietnamese	N/A	N/A	N/A
Tagalog (including Filipino)	N/A	N/A	N/A
Other Asian and Pacific Island	N/A	N/A	N/A
Arabic	N/A	N/A	N/A
Other and Unspecified	N/A	N/A	N/A
Total Non-English	N/A	N/A	N/A

**Data Note:** Detail may not sum to totals due to rounding. Hispanic population can be of any race.  
 N/A means not available. **Source:** U.S. Census Bureau, American Community Survey (ACS) 2018 - 2022.  
 \*Population by Language Spoken at Home is available at the census tract summary level and up.