



EJScreen Community Report

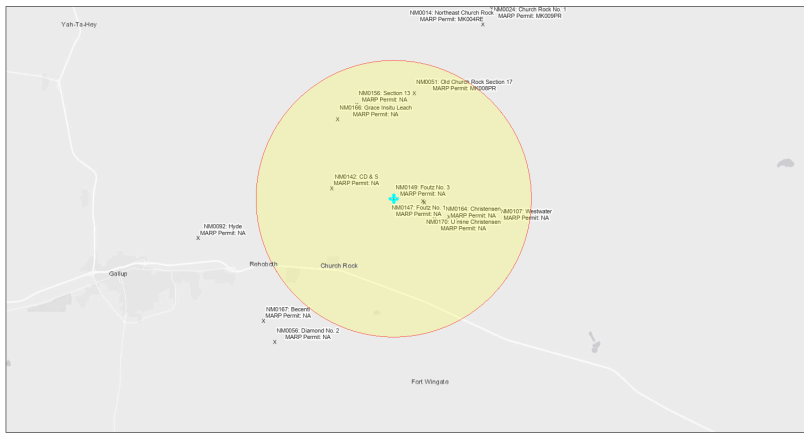
This report provides environmental and socioeconomic information for user-defined areas, and combines that data into environmental justice and supplemental indexes.

Foutz No. 3 NM0149

5 miles Ring Centered at 35.566949,-108.565923

Population: 2,578

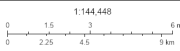
Area in square miles: 78.53



September 24, 2024

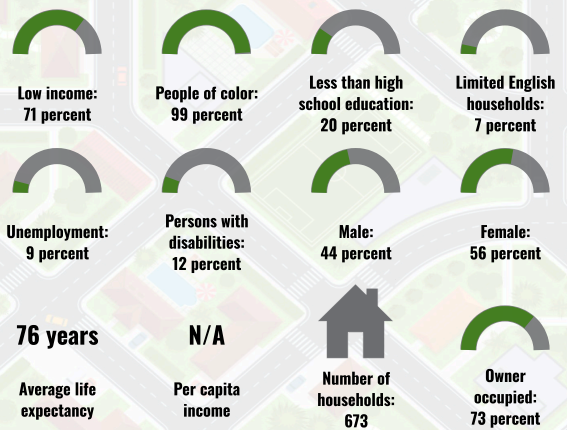
Foutz No. 3 NM0149

* Abandoned Uranium Mines

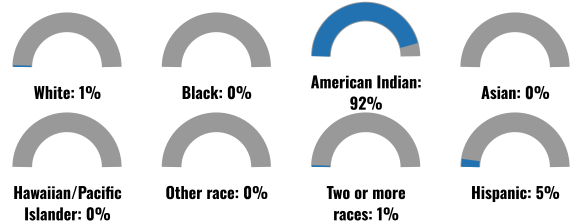


Bureau of Land Management, EPA, HHS, Census, USGS, BIA, IHS, New Mexico Energy, Storage and Natural Resources Department, EIS, HHS, IHS

COMMUNITY INFORMATION



BREAKDOWN BY RACE



BREAKDOWN BY AGE



LIMITED ENGLISH SPEAKING BREAKDOWN



LANGUAGES SPOKEN AT HOME

LANGUAGE	PERCENT
English	45%
Other and Unspecified	55%
Total Non-English	55%

Notes: Numbers may not sum to totals due to rounding. Hispanic population can be of any race. Source: U.S. Census Bureau American Community Survey (ACS) 2018-2022. Life expectancy data comes from the Centers for Disease Control.

Report for 5 miles Ring Centered at 35.566949,-108.565923

Report produced September 24, 2024 using EJScreen Version 2.3

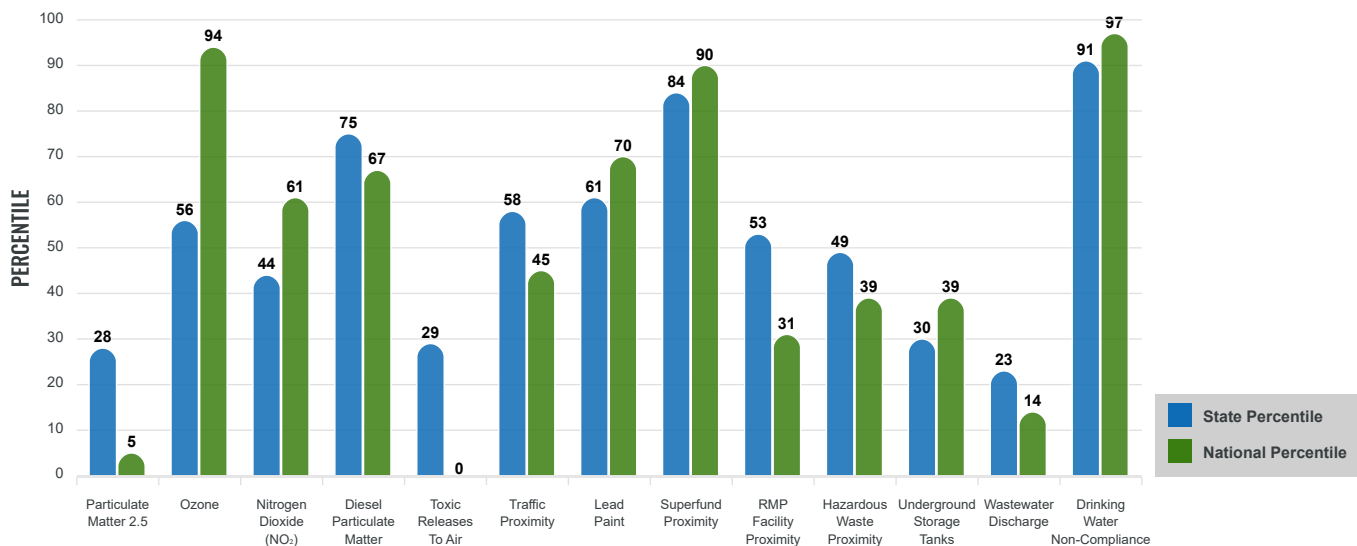
Environmental Justice & Supplemental Indexes

The environmental justice and supplemental indexes are a combination of environmental and socioeconomic information. There are thirteen EJ indexes and supplemental indexes in EJScreen reflecting the 13 environmental indicators. The indexes for a selected area are compared to those for all other locations in the state or nation. For more information and calculation details on the EJ and supplemental indexes, please visit the [EJScreen website](#).

EJ INDEXES

The EJ indexes help users screen for potential EJ concerns. To do this, the EJ index combines data on low income and people of color populations with a single environmental indicator.

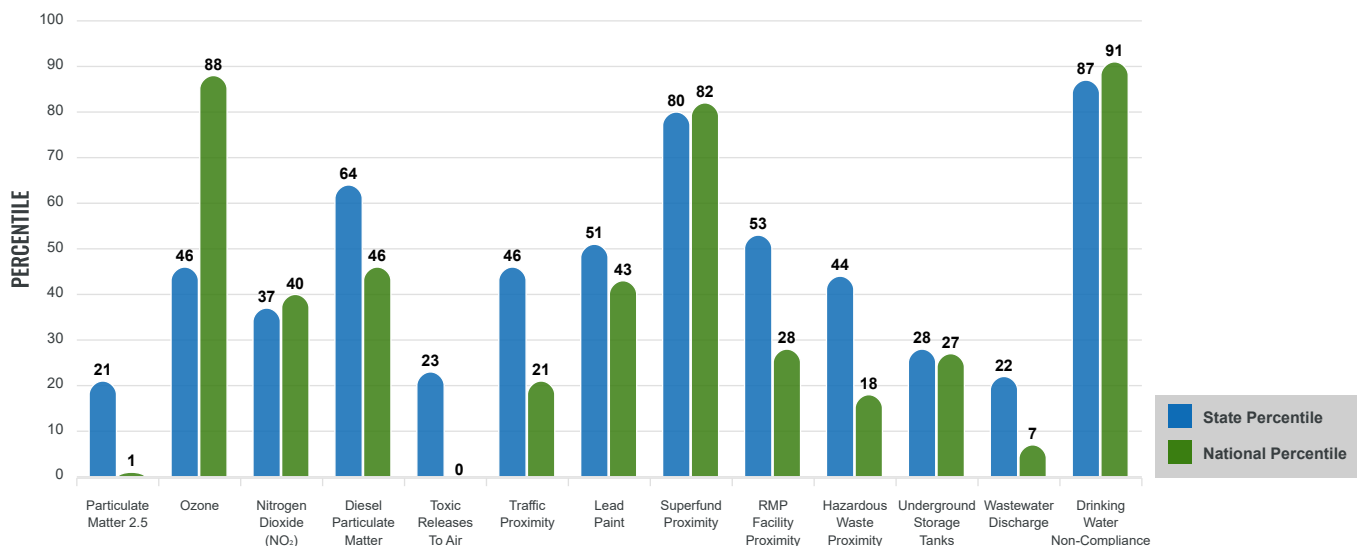
EJ INDEXES FOR THE SELECTED LOCATION



SUPPLEMENTAL INDEXES

The supplemental indexes offer a different perspective on community-level vulnerability. They combine data on percent low income, percent persons with disabilities, percent less than high school education, percent limited English speaking, and percent low life expectancy with a single environmental indicator.

SUPPLEMENTAL INDEXES FOR THE SELECTED LOCATION



Report for 5 miles Ring Centered at 35.566949,-108.565923

Report produced September 24, 2024 using EJScreen Version 2.3

EJScreen Environmental and Socioeconomic Indicators Data

SELECTED VARIABLES	VALUE	STATE AVERAGE	PERCENTILE IN STATE	USA AVERAGE	PERCENTILE IN USA
ENVIRONMENTAL BURDEN INDICATORS					
Particulate Matter 2.5 (µg/m ³)	4.9	6.11	13	8.45	1
Ozone (ppb)	63.6	65.3	31	61.8	65
Nitrogen Dioxide (NO ₂) (ppbv)	4.8	8.1	23	7.8	21
Diesel Particulate Matter (µg/m ³)	0.0932	0.187	43	0.191	25
Toxic Releases to Air (toxicity-weighted concentration)	0	29	13	4,600	0
Traffic Proximity (daily traffic count/distance to road)	59,000	730,000	30	1,700,000	13
Lead Paint (% Pre-1960 Housing)	0.065	0.19	40	0.3	29
Superfund Proximity (site count/km distance)	0.11	0.34	67	0.39	61
RMP Facility Proximity (facility count/km distance)	0.011	0.2	53	0.57	28
Hazardous Waste Proximity (facility count/km distance)	0.048	1.2	36	3.5	15
Underground Storage Tanks (count/km ²)	0.036	2.8	34	3.6	30
Wastewater Discharge (toxicity-weighted concentration/m distance)	0.11	990000	38	700000	15
Drinking Water Non-Compliance (points)	0.44	5.6	73	2.2	75
SOCIOECONOMIC INDICATORS					
Demographic Index USA	3.22	N/A	N/A	1.34	97
Supplemental Demographic Index USA	2.35	N/A	N/A	1.64	85
Demographic Index State	3.61	2.16	96	N/A	N/A
Supplemental Demographic Index State	2.11	1.62	77	N/A	N/A
People of Color	99%	62%	95	40%	96
Low Income	71%	39%	89	30%	94
Unemployment Rate	9%	6%	74	6%	80
Limited English Speaking Households	7%	6%	72	5%	80
Less Than High School Education	20%	14%	75	11%	82
Under Age 5	7%	5%	73	5%	71
Over Age 64	9%	20%	17	18%	20

*Diesel particulate matter index is from the EPA's Air Toxics Data Update, which is the Agency's ongoing, comprehensive evaluation of air toxics in the United States. This effort aims to prioritize air toxics, emission sources, and locations of interest for further study. It is important to remember that the air toxics data presented here provide broad estimates of health risks over geographic areas of the country, not definitive risks to specific individuals or locations. More information on the Air Toxics Data Update can be found at: <https://www.epa.gov/haps/air-toxics-data-update>.

Sites reporting to EPA within defined area:

Superfund	0
Hazardous Waste, Treatment, Storage, and Disposal Facilities	0
Water Dischargers	46
Air Pollution	6
Brownfields	0
Toxic Release Inventory	0

Other community features within defined area:

Schools	1
Hospitals	0
Places of Worship	1

Other environmental data:

Air Non-attainment	No
Impaired Waters	Yes

Selected location contains American Indian Reservation Lands*	Yes
Selected location contains a "Justice40 (CEJST)" disadvantaged community	Yes
Selected location contains an EPA IRA disadvantaged community	Yes

Report for 5 miles Ring Centered at 35.566949,-108.565923
 Report produced September 24, 2024 using EJScreen Version 2.3

EJScreen Environmental and Socioeconomic Indicators Data

HEALTH INDICATORS

INDICATOR	VALUE	STATE AVERAGE	STATE PERCENTILE	US AVERAGE	US PERCENTILE
Low Life Expectancy	23%	19%	82	20%	80
Heart Disease	9.3	5.9	96	5.8	96
Asthma	16.1	11.2	99	10.3	99
Cancer	5.2	6.1	30	6.4	25
Persons with Disabilities	12.5%	17.1%	25	13.7%	48

CLIMATE INDICATORS

INDICATOR	VALUE	STATE AVERAGE	STATE PERCENTILE	US AVERAGE	US PERCENTILE
Flood Risk	3%	9%	40	12%	32
Wildfire Risk	1%	58%	28	14%	78

CRITICAL SERVICE GAPS

INDICATOR	VALUE	STATE AVERAGE	STATE PERCENTILE	US AVERAGE	US PERCENTILE
Broadband Internet	58%	20%	95	13%	99
Lack of Health Insurance	18%	10%	88	9%	89
Housing Burden	No	N/A	N/A	N/A	N/A
Transportation Access Burden	Yes	N/A	N/A	N/A	N/A
Food Desert	Yes	N/A	N/A	N/A	N/A

Report for 5 miles Ring Centered at 35.566949,-108.565923

Report produced September 24, 2024 using EJScreen Version 2.3

Location: User-specified point center at 35.566949, -108.565923
 Ring (buffer): 5-miles radius
 Description: Foutz No. 3 NM0149

Summary of ACS Estimates		2018 - 2022
Population		2,578
Population Density (per sq. mile)		32
People of Color Population		2,547
% People of Color Population		99%
Households		673
Housing Units		818
Housing Units Built Before 1950		21
Per Capita Income		N/A
Land Area (sq. miles) (Source: SF1)		80.75
% Land Area		100%
Water Area (sq. miles) (Source: SF1)		0.03
% Water Area		0%

	2018 - 2022 ACS Estimates	Percent	MOE (±)
Population by Race			
Total	2,578	100%	522
Population Reporting One Race	2,549	99%	813
White	59	2%	264
Black	6	0%	19
American Indian	2,445	95%	384
Asian	0	0%	13
Pacific Islander	0	0%	13
Some Other Race	39	2%	120
Population Reporting Two or More Races	28	1%	186
Total Hispanic Population	131	5%	248
Total Non-Hispanic Population	2,447		
White Alone	31	1%	198
Black Alone	6	0%	19
American Indian Alone	2,375	92%	355
Non-Hispanic Asian Alone	0	0%	13
Pacific Islander Alone	0	0%	13
Other Race Alone	8	0%	28
Two or More Races Alone	28	1%	68
Population by Sex			
Male	1,123	44%	336
Female	1,455	56%	238
Population by Age			
Age 0-4	183	7%	62
Age 0-17	751	29%	184
Age 18+	1,827	71%	283
Age 65+	225	9%	82

Data Note: Detail may not sum to totals due to rounding. Hispanic population can be of any race.

N/A means not available. **Source:** U.S. Census Bureau, American Community Survey (ACS) 2018 - 2022

Location: User-specified point center at 35.566949, -108.565923
 Ring (buffer): 5-miles radius
 Description: Foutz No. 3 NM0149

	2018 - 2022 ACS Estimates	Percent	MOE (±)
Population 25+ by Educational Attainment			
Total	1,537	100%	334
Less than 9th Grade	96	6%	40
9th - 12th Grade, No Diploma	218	14%	41
High School Graduate	549	36%	132
Some College, No Degree	398	26%	108
Associate Degree	148	10%	110
Bachelor's Degree or more	129	8%	157
Population Age 5+ Years by Ability to Speak English			
Total	2,394	100%	489
Speak only English	1,133	47%	317
Non-English at Home ¹⁺²⁺³⁺⁴	1,261	53%	231
¹ Speak English "very well"	1,050	44%	218
² Speak English "well"	145	6%	72
³ Speak English "not well"	45	2%	58
⁴ Speak English "not at all"	21	1%	46
³⁺⁴ Speak English "less than well"	66	3%	74
²⁺³⁺⁴ Speak English "less than very well"	211	9%	96
Limited English Speaking Households*			
Total	48	100%	29
Speak Spanish	0	0%	13
Speak Other Indo-European Languages	0	0%	13
Speak Asian-Pacific Island Languages	0	0%	13
Speak Other Languages	48	100%	19
Households by Household Income			
Household Income Base	673	100%	120
< \$15,000	188	28%	70
\$15,000 - \$25,000	82	12%	23
\$25,000 - \$50,000	130	19%	49
\$50,000 - \$75,000	86	13%	48
\$75,000 +	187	28%	125
Occupied Housing Units by Tenure			
Total	673	100%	120
Owner Occupied	494	73%	105
Renter Occupied	179	27%	94
Employed Population Age 16+ Years			
Total	1,888	100%	358
In Labor Force	927	49%	279
Civilian Unemployed in Labor Force	86	9%	44
Not In Labor Force	961	51%	210

Data Note: Detail may not sum to totals due to rounding. Hispanic population can be of anyrace.

N/A means not available. **Source:** U.S. Census Bureau, American Community Survey (ACS)

*Households in which no one 14 and over speaks English "very well" or speaks English only.

Location: User-specified point center at 35.566949, -108.565923

Ring (buffer): 5-miles radius

Description: Foutz No. 3 NM0149

	2018 - 2022 ACS Estimates	Percent	MOE (±)
Population by Language Spoken at Home*			
Total (persons age 5 and above)	2,052	100%	300
English	929	45%	257
Spanish	0	0%	13
French, Haitian, or Cajun	0	0%	13
German or other West Germanic	0	0%	13
Russian, Polish, or Other Slavic	0	0%	13
Other Indo-European	0	0%	13
Korean	0	0%	13
Chinese (including Mandarin, Cantonese)	0	0%	13
Vietnamese	0	0%	13
Tagalog (including Filipino)	0	0%	13
Other Asian and Pacific Island	0	0%	13
Arabic	0	0%	13
Other and Unspecified	1,123	55%	195
Total Non-English	1,123	55%	395

Data Note: Detail may not sum to totals due to rounding. Hispanic population can be of any race.
N/A means not available. **Source:** U.S. Census Bureau, American Community Survey (ACS) 2018 - 2022.
*Population by Language Spoken at Home is available at the census tract summary level and up.